

@SUPPORT
SCALE 1:20

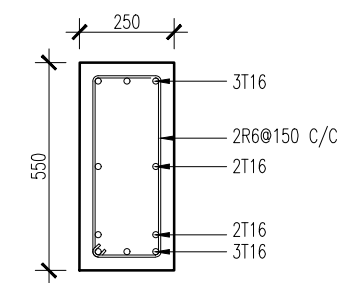
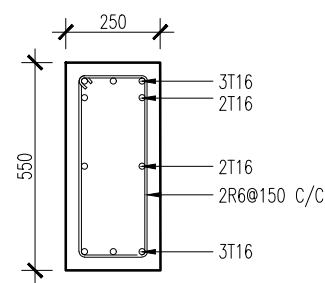
B1

@MID-SPAN

@SUPPORT
SCALE 1:20

B2A

@MID-SPAN



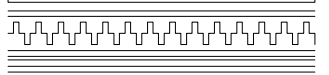
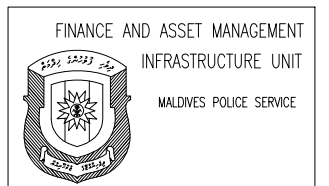
@SUPPORT
SCALE 1:20

B2

@MID-SPAN

STRUCTURE DETAILS

SCALE 1:100



PROJECT TITLE:

L . FONADHOO POLICE STATION

APPROVED

DESIGN APPROVED BY:

RECOMMENDATION APPROVED

THE DRAWINGS, CONCEPT AND DESIGN CONTAINED AREA THE PROPERTIES OF MALDIVES POLICE SERVICE. USE OF ANY KIND OR COPY OF WHOLE OR PART OF THIS DRAWING CONCEPT OR DESIGN OR USE ON OTHER PROJECTS OR SITES OTHER THAN THAT SPECIFIED ON THIS DRAWINGS IS STRICTLY PROHIBITED

ARCHITECT/DESIGNER	DRAFTED BY
ASSISTANT DIRECTOR AHMED SADHEEM	SUB INSP OF POLICE MOHAMED FALAAH

STRUCTURAL ENGINEER	DRAFTED BY
SUB INSP OF POLICE FAZEEN	SUB INSP OF POLICE MOHAMED FALAAH

CHECKED BY	CHECKED BY
ASSISTANT DIRECTOR AHMED SADHEEM	SUB INSP OF POLICE AHMED NIZAL

ARCHITECTURAL DRAWINGS	
SHEET NO.	DATE: 19 AUG 2021

S-09