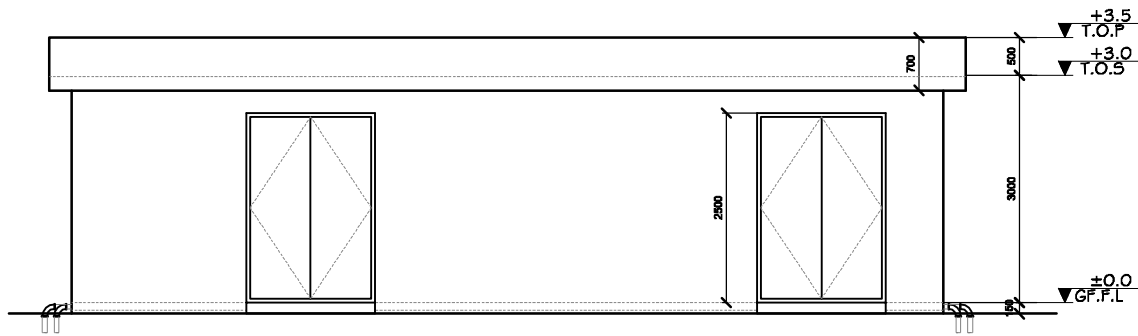


RO PLANT BUILDING
SCALE 1:100

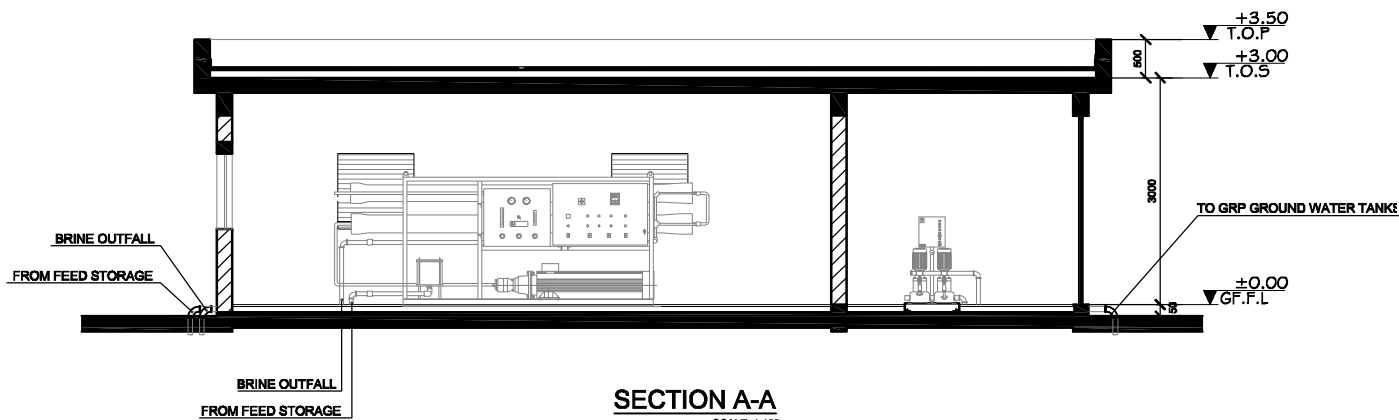
NO.	PUMP CAPACITY	MOTOR	POWER SUPPLY	REMARKS
01	10.0M ³ /HRS	25 KW(33.33 BHP)	400-415/3/50	TWO NOS OF RO PLANT WORKING ACCORDING TO FLOAT SENSOR



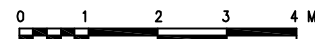
VIEW-1
SCALE 1:100

DOOR & LOUVER SCHEDULE

D1	WIDTH	HEIGHT	DESCRIPTION	D2	WIDTH	HEIGHT	DESCRIPTION	L1	WIDTH	HEIGHT	DESCRIPTION
	2000	2500	STEEL DOOR WITH LOUVERS		800	2000	STEEL DOOR WITH LOUVERS		1000	1000	STEEL FRAME WITH LOUVERS



SECTION A-A
SCALE 1:100



1. ALL DIMENSION ARE IN MILLIMETER (MM),UNLESS OTHERWISE NOTED
2. **ALL LEVELS SHOWN ARE IN METERS.**
3. THIS DRAWING TO BE READ IN CONJUNCTION WITH ALL OTHER RELEVANT DRAWINGS,GENERAL NOTES AND SPECIFICATIONS.

REFERENCE DRAWINGS

SL.No	DRAWING No.	DESCRIPTION

REV.	DATE	DESCRIPTION	DRAWN	CHKD	APPR
0	08.02.'10	ISSUED FOR TENDER	JP	AT	MA

REVISION

CLIENT
MINISTRY OF ENVIRONMENT & ENERGY
REPUBLIC OF MALDIVES

CONSULTANT:
Al-Habshi Consultants Office
 Tel: 2430103 / 2433131 - Fax: 2431136
 P.O.Box 27154 Safat 13132 - Kuwait

PROJECT:
 Provision of Water Supply Facilities in 04 islands and Sewerage Facilities in 05 islands - R.Hulhudhuffaar Island - Republic of Maldives

DRAWING TITLE:
REVERSE OSMOSIS UNIT DETAILS

DESIGNED	DRAWN	CHECKED	APPROVED	SCALE	DATE
SK	JP	SS	MA	1:50	15.09.'15
PROJECT No.	SHEET No.	DRAWING No.			
K-619	1 OF 1	RH-WS-121			
REV. No.	0				