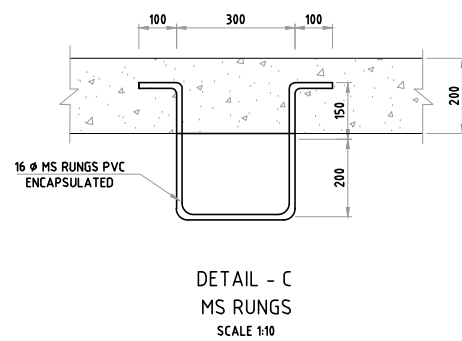
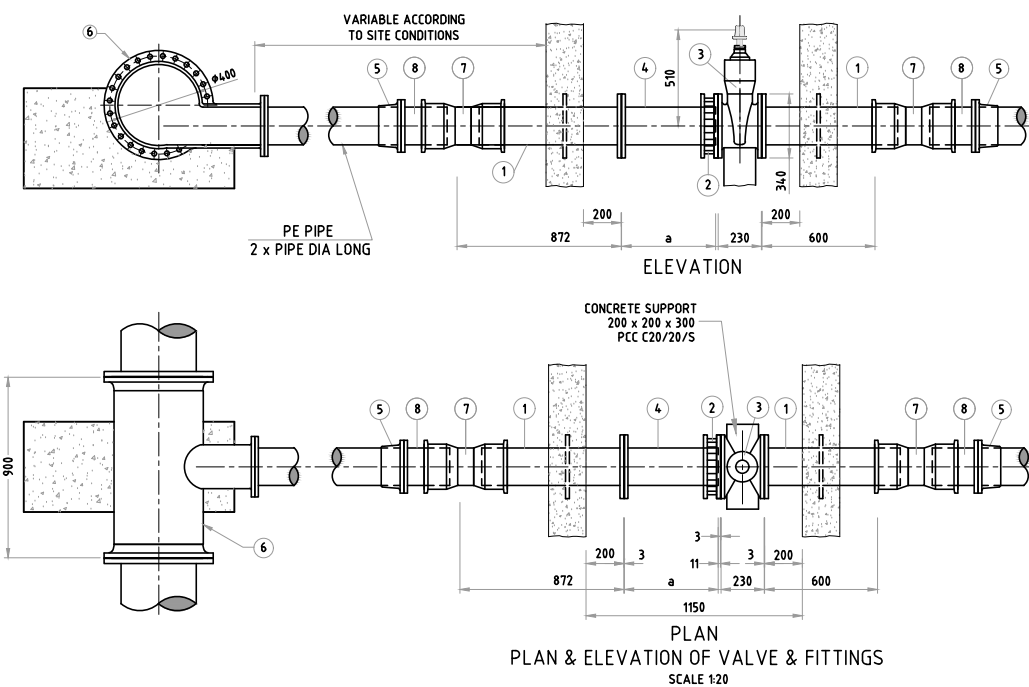
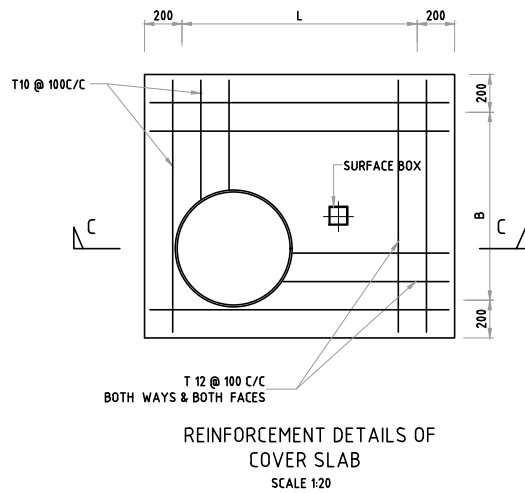


Dia of Pipe (d)	L	B	a
200	1150	1100	500
250	1600	1200	250

ITEM	SPECIALS AND FITTINGS	QTY
1	DI FLANGED-SPIGOT PIPE WITH WELDED THRUST FLANGE	2
2	FLANGE ADAPTOR	1
3	DI GATE VALVE	1
4	DI FLANGED-SPIGOT PIECE	1
5	DI/PE ADOPOTR	2
6	ALL FLANGED LEVEL SCOUR TEE	1
7	DI COLLAR	2
8	DI SHORT LENGTH FLANGED SPIGOT PIECE	2



1. ALL DIMENSIONS ARE IN MM
2. FOR LOCATION AND DEPTHS OF GATE VALVE CHAMBER REFER TO DRAWINGS OF PIPELINE PLANS AND PROFILES.
3. THE SPECIALS AND PIPE FITTINGS SHALL BE SELECTED TO SUIT THE SUPPLY PIPE LINE
4. ALL THE VALVES , SPECIALS AND PIPES INSIDE THE CHAMBER SHOULD BE OF DUCTILE IRON
5. GATE VALVE SHALL COMPLY WITH BS 5150
6. DI PIPE & FITTING SHALL COMPLY WITH BS 4772
7. BUILDING MATERIALS--
DESCRIPTION OF BUILDING MATERIALS IS AS FOLLOWS

C 30 / 20 / S		SULPHATE RESISTANT CEMENT
↑	↑	
↓	↓	
↓	↓	

COMPRESSIVE STRENGTH OF CONCRETE
SULPHATE RESISTANT CEMENT

MAXIMUM SIZE OF AGGREGATE

8. CONCRETE:
 - A. MIXES SHALL COMPLY WITH BS 8110
 - B. MINIMUM 28 DAY CHARACTERISTIC STRENGTH IN ACCORDANCE WITH BS 8110
9. COVER TO REINFORCEMENT TO BE 50MM,
10. THE STEEL USED SHALL BE OF FY 350 GRADE.
11. THE TANKING SHALL BE WITH TWO LAYERS OF BITUMINOUS PAINT FOR EXTERNAL SURFACES OF VALVE CHAMBER
12. GATE VALVE CHAMBER TO BE PROVIDED FOR PIPE DIA 200 TO 300 MM
13. MH COVER SHOULD COMPLY TO BS EN 124 CLASS D400

ABBREVIATIONS

PIL - PIPE INVERT LEVEL.
MS - MILD STEEL.
DI - DUCTILE IRON.
PE - POLY ETHYLENE
RCC - REINFORCED CEMENT CONCRETE
PCC - PLAIN CEMENT CONCRETE

[illegible]