

BUILDING SERVICES DRAWINGS OF

PROPOSED 03 STOREY BUILDING AT

N. VELIDHOO HOSPITAL

For Ministry of Health

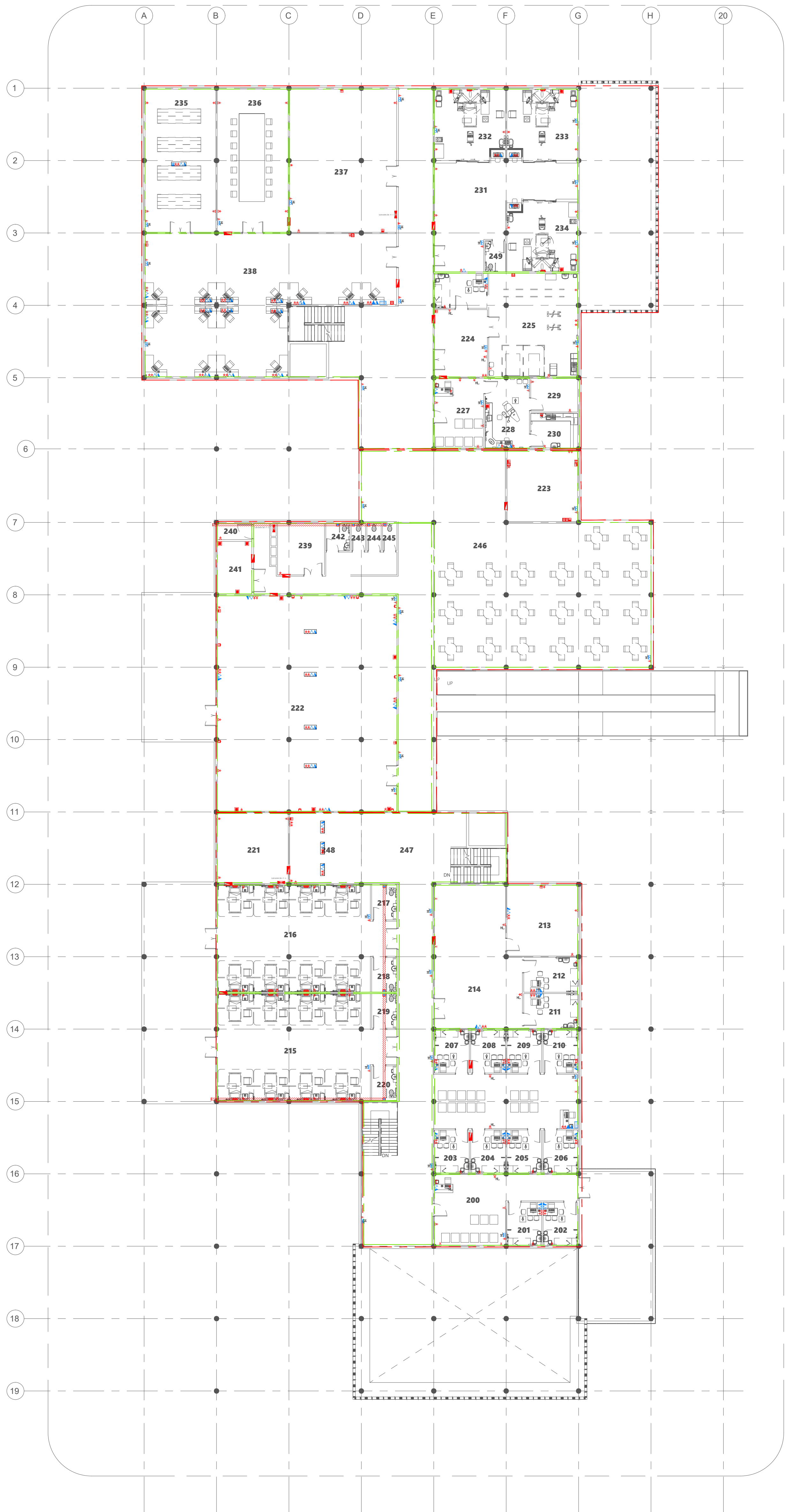
By Epoch Associates Pvt. Ltd



T: +960 333 3528 **E:** info@epoch.associates **W:** www.epoch.associates
A: 4A, 4th Floor, M. Ahigasdhoshuge, Fareedhee Magu Male' Republic of Maldives



- Legend
- 13A Twin Socket
 - 13A Twin Socket With USB Ports
 - 15A Switch @ 1200mm From F.F.L.
 - 15A Socket In Polycarbonate Box
 - 15A Power Socket
 - Shaver Socket For Toilets Only At 1000mm From F.F.L.
 - 8 Power Outlets Integrated in Bed Head Unit
 - 13A Power Socket
 - TPN Isolator
 - Distribution Board
 - Main Sub Distribution Board
 - 820 PVC Duct For Tel/Internet Cable Lead In Below Ground Slab
 - 820 PVC Duct For TV Cable Lead In Below Ground Slab
 - Main Incoming Cable For Power In 1100 PVC Duct Below Ground Slab
 - HDMI Socket
 - Telephone Extension
 - Telephone Outlet
 - Computer Network Outlet
 - TV Socket Outlet
 - Emergency Light
 - IT Distribution Board
 - Private Automatic Branch Exchange (PABX)
 - Internet Switchboard
 - Ceiling Mounted Exhaust Fan



- Legend
- 13A Twin Socket
 - 13A Twin Socket With USB Ports
 - 15A Switch @ 1200mm From F.F.L.
 - 15A Socket In Polycarbonate Box
 - 15A Power Socket
 - Shaver Socket For Toilets Only At 1000mm From F.F.L.
 - 8 Power Outlets Integrated in Bed Head Unit
 - 13A Power Socket
 - TPN Isolator
 - Distribution Board
 - Main Sub Distribution Board
 - 620 PVC Duct For Tel/Internet Cable Lead In Below Ground Slab
 - 820 PVC Duct For TV Cable Lead In Below Ground Slab
 - Main Incoming Cable For Power In 1100 PVC Duct Below Ground Slab
 - HDMI Socket
 - Telephone Extension
 - Telephone Outlet
 - Computer Network Outlet
 - TV Socket Outlet
 - Emergency Light
 - IT Distribution Board
 - Private Automatic Branch Exchange (PABX)
 - Internet Switchboard
 - Ceiling Mounted Exhaust Fan

PROPOSED 03 STOREY BUILDING AT
N. VELIDHOO

Client:
**MINISTRY OF HEALTH,
MALDIVES**

December 2019

Services By: Hussain Rasheed
Checked By: Mohamed Rassam
Drawn By: Hussain Rasheed

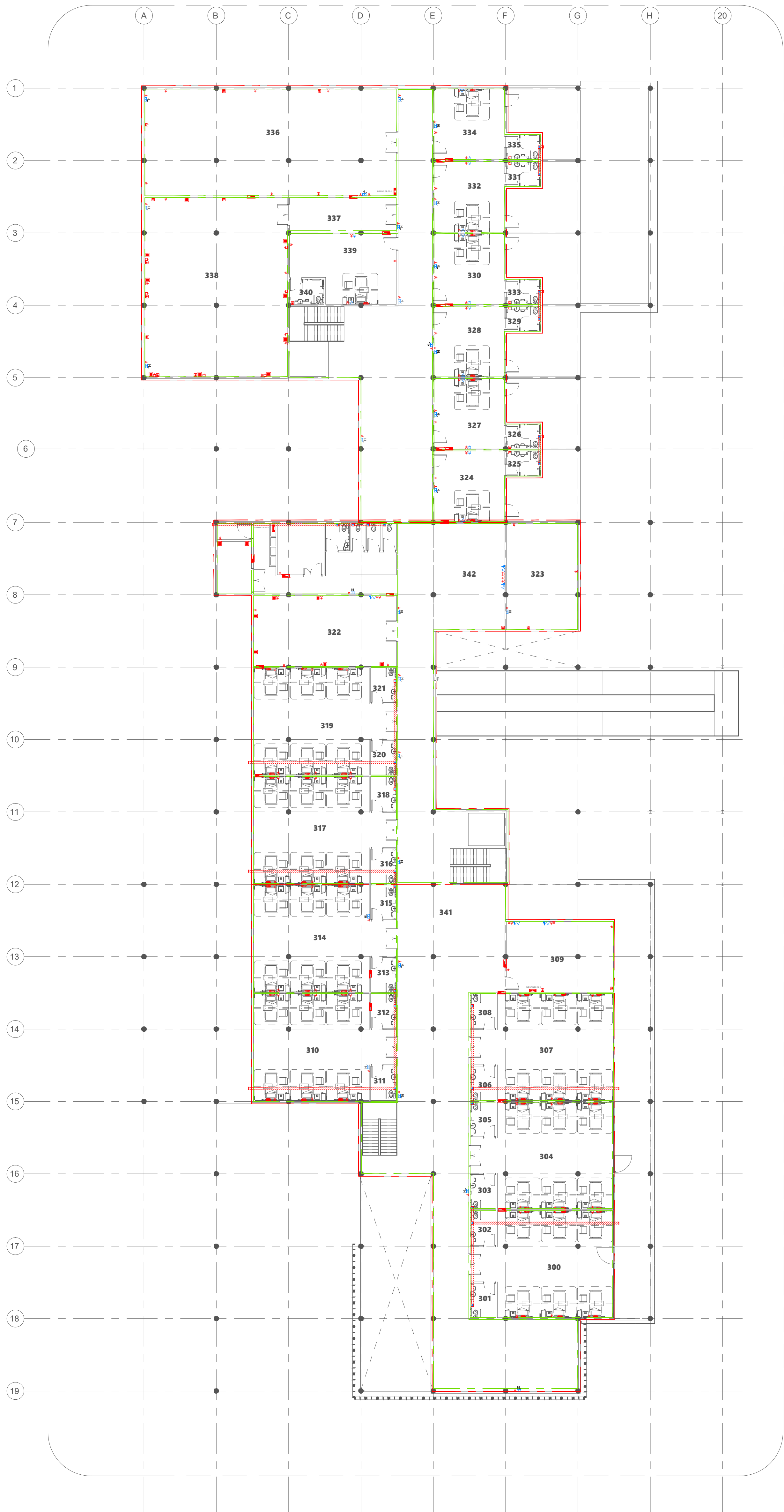


T: +960 333 3328 E: info@epochassociates.com
W: www.epochassociates.com A: 10, Alifan Road, Malé, Maldives

FIRST FLOOR POWER LAYOUT

1200

Rev: Page:
POW-02



- Legend**
- 13A Twin Socket
 - 13A Twin Socket With USB Ports
 - 15A Switch @ 1200mm From F.F.L.
 - 15A Socket in Polycarbonate Box
 - 15A Power Socket
 - Shaver Socket For Toilets Only At 1000mm From F.F.L.
 - 8 Power Outlets Integrated in Bed Head Unit
 - 13A Power Socket
 - TPN Isolator
 - Distribution Board
 - Main Sub Distribution Board
 - 620 PVC Duct For Tel/Internet Cable Lead In Below Ground Slab
 - 820 PVC Duct For TV Cable Lead In Below Ground Slab
 - Main Incoming Cable For Power In 1100 PVC Duct Below Ground Slab
 - HDMI Socket
 - Telephone Extension
 - Telephone Outlet
 - Computer Network Outlet
 - TV Socket Outlet
 - Emergency Light
 - IT Distribution Board
 - Private Automatic Branch Exchange (PABX)
 - Internet Switchboard
 - Ceiling Mounted Exhaust Fan

PROPOSED 03 STOREY BUILDING AT
N. VELIDHOO

Client:
**MINISTRY OF HEALTH,
MALDIVES**

December 2019

Services By: Hussain Rasheed
Checked By: Mohamed Rassam
Drawn By: Hussain Rasheed

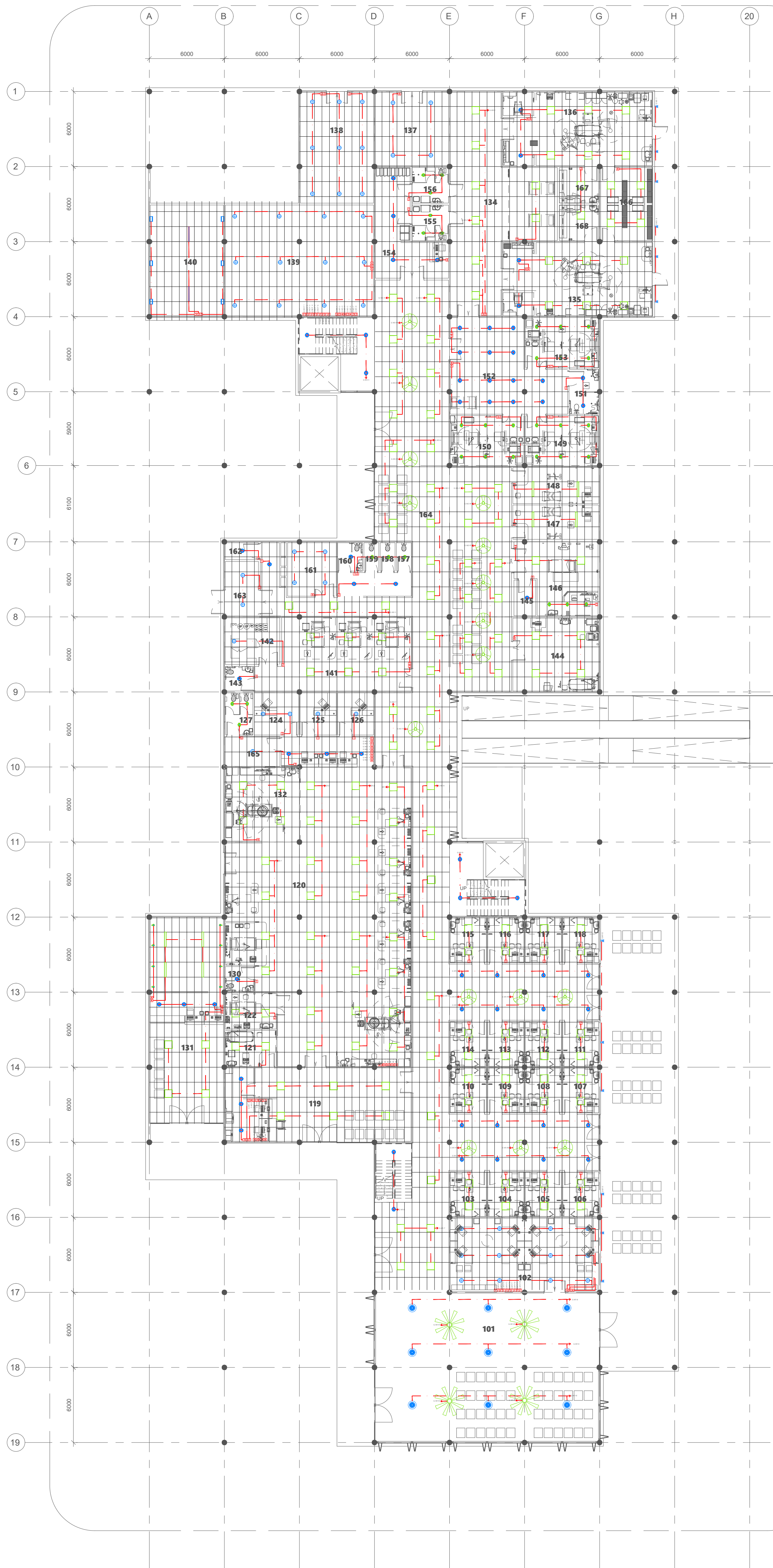


T: +960 333 3128 E: info@epochassociates.com
W: www.epochassociates.com A: 10, Algaadhiya Road,
Fareeha Magu, Malé, Republic of Maldives

SECOND FLOOR POWER LAYOUT

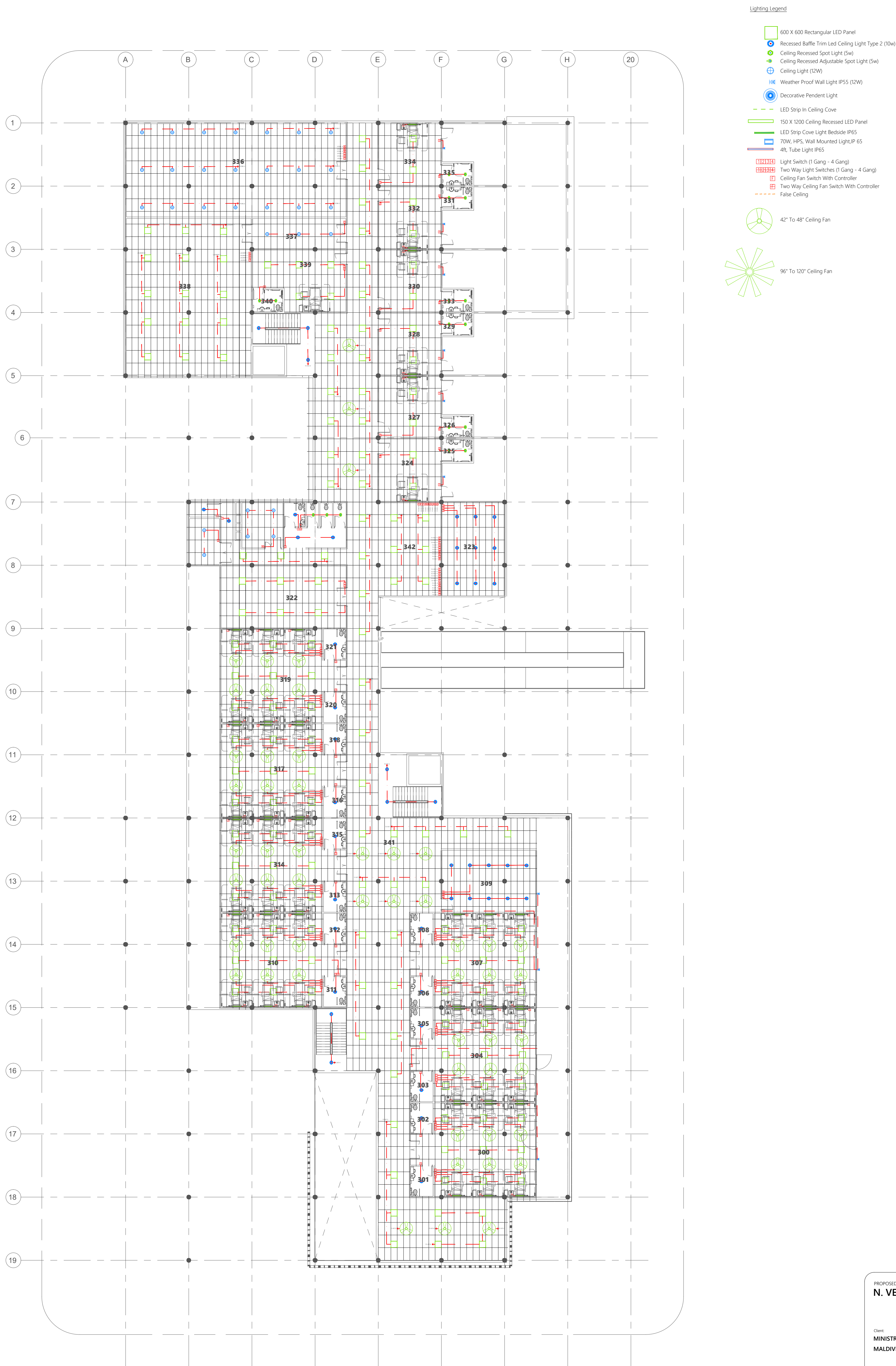
1:200

Rev: Page:
POW-03



- Lighting Legend
- 600 X 600 Rectangular LED Panel
 - Recessed Baffle Trim Led Ceiling Light Type 2 (10w)
 - Ceiling Recessed Spot Light (5w)
 - Ceiling Recessed Adjustable Spot Light (5w)
 - Ceiling Light (12W)
 - Weather Proof Wall Light IP55 (12W)
 - Decorative Pendant Light
 - LED Strip In Ceiling Cove
 - 150 X 1200 Ceiling Recessed LED Panel
 - LED Strip Cove Light Bedside IP65
 - 70W, HPS, Wall Mounted Light, IP 65
 - 4ft, Tube Light IP65
 - Light Switch (1 Gang - 4 Gang)
 - Two Way Light Switches (1 Gang - 4 Gang)
 - Ceiling Fan Switch With Controller
 - Two Way Ceiling Fan Switch With Controller
 - False Ceiling
 - 42" To 48" Ceiling Fan
 - 96" To 120" Ceiling Fan







- CO₂ Extinguisher (load: 2kg) In Polycarbonate Enclosure
- DCP Extinguisher (load: 6kg) In Polycarbonate Enclosure
- H₂O Extinguisher (load: 9L) In Polycarbonate Enclosure
- Manual Call Point
- Smoke Detector
- Heat Detector
- Beacon
- Sounder Bell
- 2.5mm² Fire Retardant Low Smoke (FRLS) Cables In FRLS Conduits
- FACP Fire Alarm Control Panel
- Exit Sign
- 30m Horse Reel
- Landing Valve
- 4 Way Breaching Inlet
- Zone Boundary line

1. ALL DRY RISER PIPES SHOULD BE GALVANIZED, SCHEDULE 40.
2. ALL DRY RISER PIPES SHALL BE PAINTED IN RED AS PER REGULATION.
3. ALL SUPPORT/BRACKET SHALL BE HOT DIPPED GALVANIZED.

PROPOSED 02 STOREY BUILDING AT
N. VELIDHOO

Client:
**MINISTRY OF HEALTH,
MALDIVES**

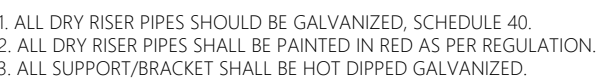
December 2019
Services By: Hussain Rasheed
Checked By: Mohamed Rassam
Drawn By: Hussain Rasheed



T: +960 333 3328 E: info@epochassociates.com
W: www.epochassociates.com A: 10, Algaadhiya Road,
Fareeha Magu, Malé, Republic of Maldives

GROUND FLOOR FDP LAYOUT
1200

Rev: Page:
FDP-01





- CO₂ Extinguisher (load: 2kg) In Polycarbonate Enclosure
- DCP Extinguisher (load: 6kg) In Polycarbonate Enclosure
- H₂O Extinguisher (load: 9L) In Polycarbonate Enclosure
- Manual Call Point
- Smoke Detector
- Heat Detector
- Beacon
- Sounder Bell
- 2.5mm² Fire Retardant Low Smoke (FRLS) Cables In FRLS Conduits
- FACP Fire Alarm Control Panel
- Exit Sign
- 30m Horse Reel Landing Valve
- 4 Way Breaching Inlet
- Zone Boundary line

1. ALL DRY RISER PIPES SHOULD BE GALVANIZED, SCHEDULE 40.
2. ALL DRY RISER PIPES SHALL BE PAINTED IN RED AS PER REGULATION.
3. ALL SUPPORT/BRAKET SHALL BE HOT DIPPED GALVANIZED.

PROPOSED 02 STOREY BUILDING AT
N. VELIDHOO

Client:
**MINISTRY OF HEALTH,
MALDIVES**

December 2019

Services By: Hussain Rasheed
Checked By: Mohamed Rassam
Drawn By: Hussain Rasheed

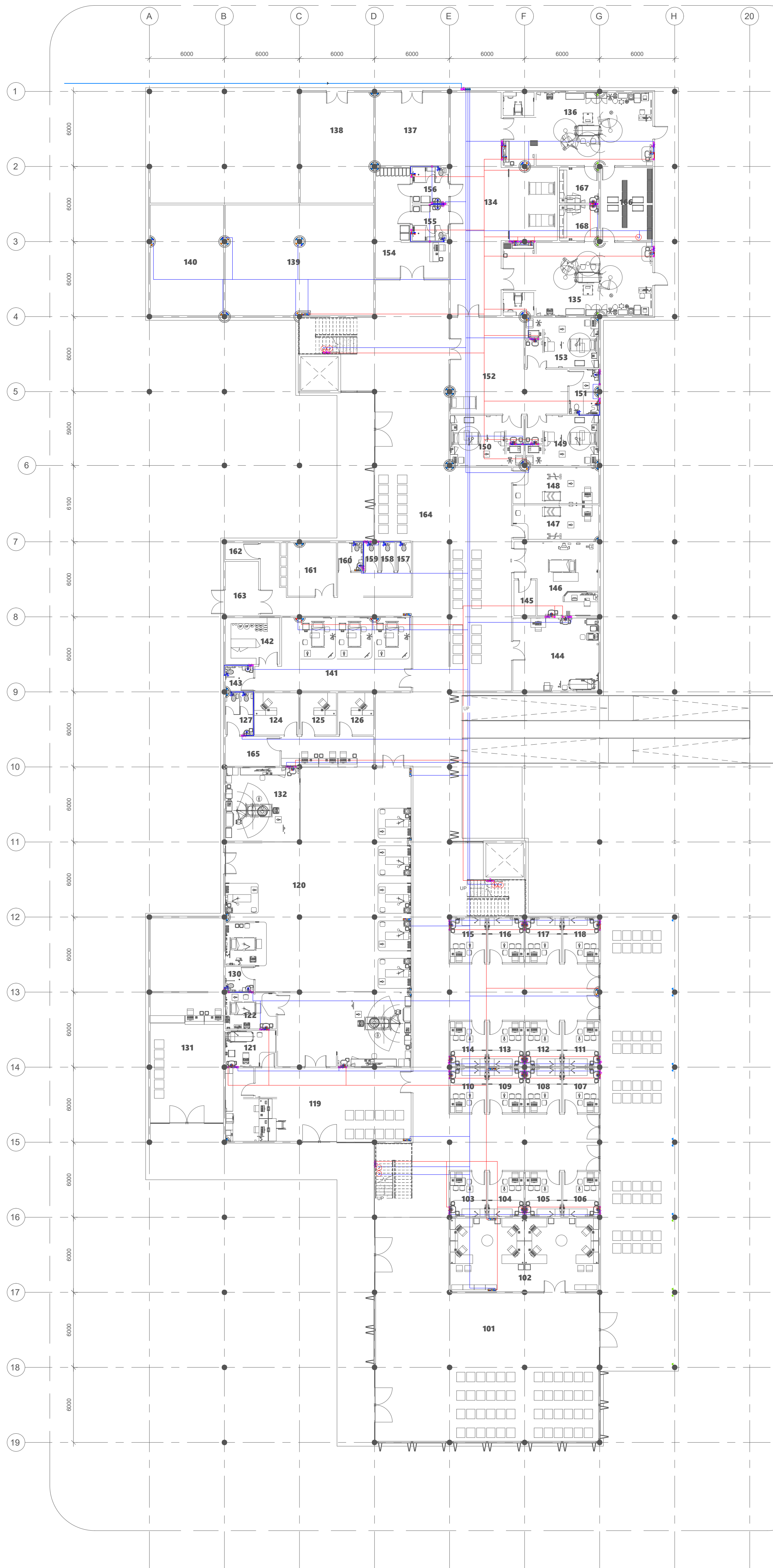


T: +960 333 3328 E: info@epochassociates.com
W: www.epochassociates.com A: 10, Alifan Road, Thagadu,
Farafaru Magu, Malé, Republic of Maldives

SECOND FLOOR FDP LAYOUT

1200

Rev:	Page:
---	---
---	---
---	---
---	FDP-03



- Legend**
- 160 Cold Water Supply To Basin Faucet
 - 160 Cold Water Supply To Wall Tap
 - 160 Cold Water Supply To Sink Tap
 - 160 Cold Water Supply To Bidet Shower
 - 160 Cold Water Supply To Cistern
 - 160 Cold Water Supply & 120 Hot Water Supply To Shower Mixer
 - 160 Cold Water Supply & 120 Hot Water Supply To Basin Mixer Faucet
 - 200 Cold Water Supply & 200 Hot Water Supply To Bedpan Washer
 - 160 Cold Water Supply & 120 Hot Water Supply To Scrub Sink
 - Gate Valve
 - Rise In Wall
 - Drop In Wall
 - 250 Cold Water Supply Pipes Running Underground
 - 200 Cold Water Supply Pipes Running In Wall
 - 200 Cold Water Supply Pipes Running Above False Ceiling
 - 160 Rain Water Supply (RWS) Pipes
 - 250 Rain Water Supply (RWS) Pipes
 - 250 Hot Water Supply Pipes
 - 200L Floor Standing Water Heater
 - 100L Wall-Hung Water Heater
 - 400 Hot Water Supply Pipes Running Underground
 - 120 Hot Water Supply Pipes Running In Wall
 - 120 Hot Water Supply Pipes Running Above False Ceiling
- Notes -**
- All Cold Water Pipes Should Be PVC
 - SI Hot Water Pipes Should Be PPR

GROUND FLOOR PLUMBING LAYOUT

1:200

PROPOSED 02 STOREY BUILDING AT
N. VELIDHOO

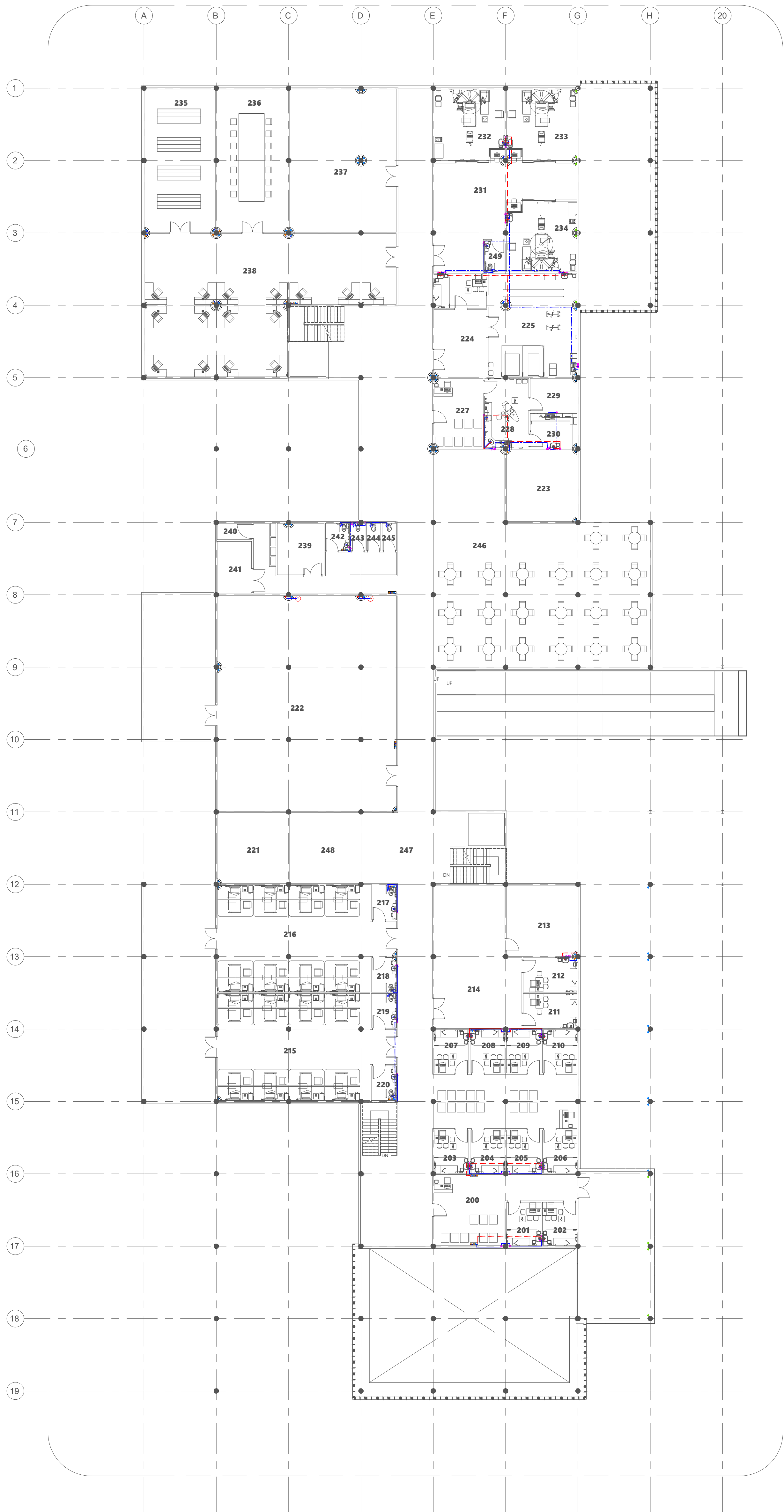
Client:
**MINISTRY OF HEALTH,
MALDIVES**

December 2019
Services By: Hussain Rasheed
Checked By: Mohamed Rassam
Drawn By: Hussain Rasheed



T: +960 333 3328 E: info@epochassociates.com
W: www.epochassociates.com A: 10, Alifantheppu, Faridhee Magu, Malé, Republic of Maldives

Rev:	Page:
---	---
---	---
---	PL-01



- Legend
- 160 Cold Water Supply To Basin Faucet
 - 160 Cold Water Supply To Wall Tap
 - 160 Cold Water Supply To Sink Tap
 - 160 Cold Water Supply To Bidet Shower
 - 160 Cold Water Supply To Cistern
 - 160 Cold Water Supply & 120 Hot Water Supply To Shower Mixer
 - 160 Cold Water Supply & 120 Hot Water Supply To Basin Mixer Faucet
 - 200 Cold Water Supply & 200 Hot Water Supply To Bedpan Washer
 - 160 Cold Water Supply & 120 Hot Water Supply To Scrub Sink
 - Gate Valve
 - Rise In Wall
 - Drop In Wall
 - 250 Cold Water Supply Pipes Running Underground
 - 200 Cold Water Supply Pipes Running In Wall
 - 200 Cold Water Supply Pipes Running Above False Ceiling
 - 160 Rain Water Supply (RWS) Pipes
 - 250 Rain Water Supply (RWS) Pipes
 - 250 Hot Water Supply Pipes
 - 200L Floor Standing Water Heater
 - 100L Wall-Hung Water Heater
 - 400 Hot Water Supply Pipes Running Underground
 - 120 Hot Water Supply Pipes Running In Wall
 - 120 Hot Water Supply Pipes Running Above False Ceiling

Notes :-

-All Cold Water Pipes Should Be PVC
-All Hot Water Pipes Should Be PPR

PROPOSED 02 STOREY BUILDING AT
N. VELIDHOO

Client:
**MINISTRY OF HEALTH,
MALDIVES**

December 2019

Services By: Hussain Rasheed
Checked By: Mohamed Rassam
Drawn By: Hussain Rasheed

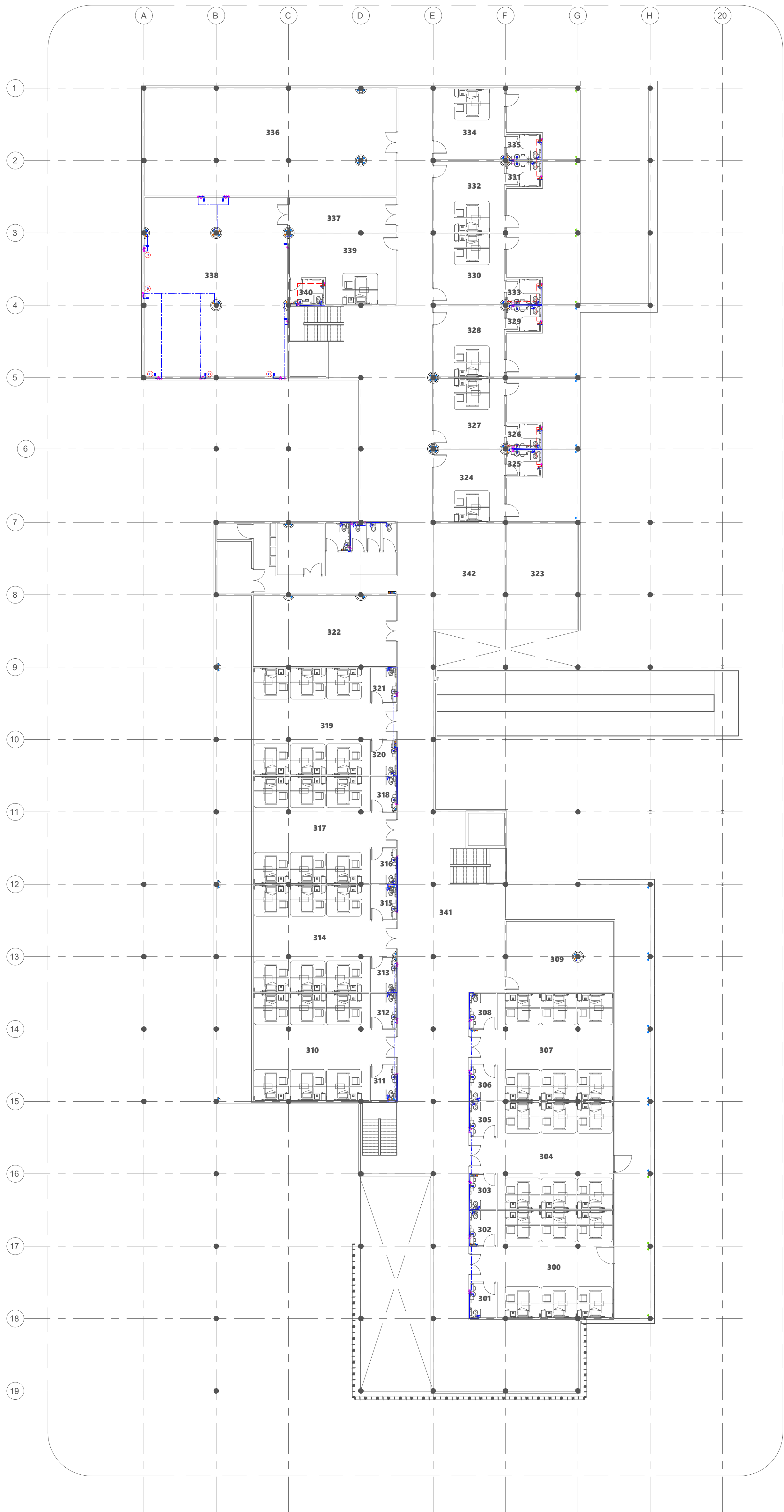


T: +960 333 3328 E: info@epochassociates.com
W: www.epochassociates.com A: 10, Alifan Road, Maldives
Faridhee Magu, Maldives

FIRST FLOOR PLUMBING LAYOUT

1:200

Rev: Page: PL-02



- Legend**
- 160 Cold Water Supply To Basin Faucet
 - 160 Cold Water Supply To Wall Tap
 - 160 Cold Water Supply To Sink Tap
 - 160 Cold Water Supply To Bidet Shower
 - 160 Cold Water Supply To Cistern
 - 160 Cold Water Supply & 120 Hot Water Supply To Shower Mixer
 - 160 Cold Water Supply & 120 Hot Water Supply To Basin Mixer Faucet
 - 200 Cold Water Supply & 200 Hot Water Supply To Bedpan Washer
 - 160 Cold Water Supply & 120 Hot Water Supply To Scrub Sink
 - Gate Valve
 - Rise In Wall
 - Drop In Wall
 - 250 Cold Water Supply Pipes Running Underground
 - 200 Cold Water Supply Pipes Running In Wall
 - 200 Cold Water Supply Pipes Running Above False Ceiling
 - 160 Rain Water Supply (RWS) Pipes
 - 250 Rain Water Supply (RWS) Pipes
 - 250 Hot Water Supply Pipes
 - 200L Floor Standing Water Heater
 - 100L Wall-Hung Water Heater
 - 400 Hot Water Supply Pipes Running Underground
 - 120 Hot Water Supply Pipes Running In Wall
 - 120 Hot Water Supply Pipes Running Above False Ceiling

Notes:

-All Cold Water Pipes Should Be PVC
-All Hot Water Pipes Should Be PPR

PROPOSED 02 STOREY BUILDING AT
N. VELIDHOO

Client:
**MINISTRY OF HEALTH,
MALDIVES**

December 2019

Services By: Hussain Rasheed
Checked By: Mohamed Rassam
Drawn By: Hussain Rasheed

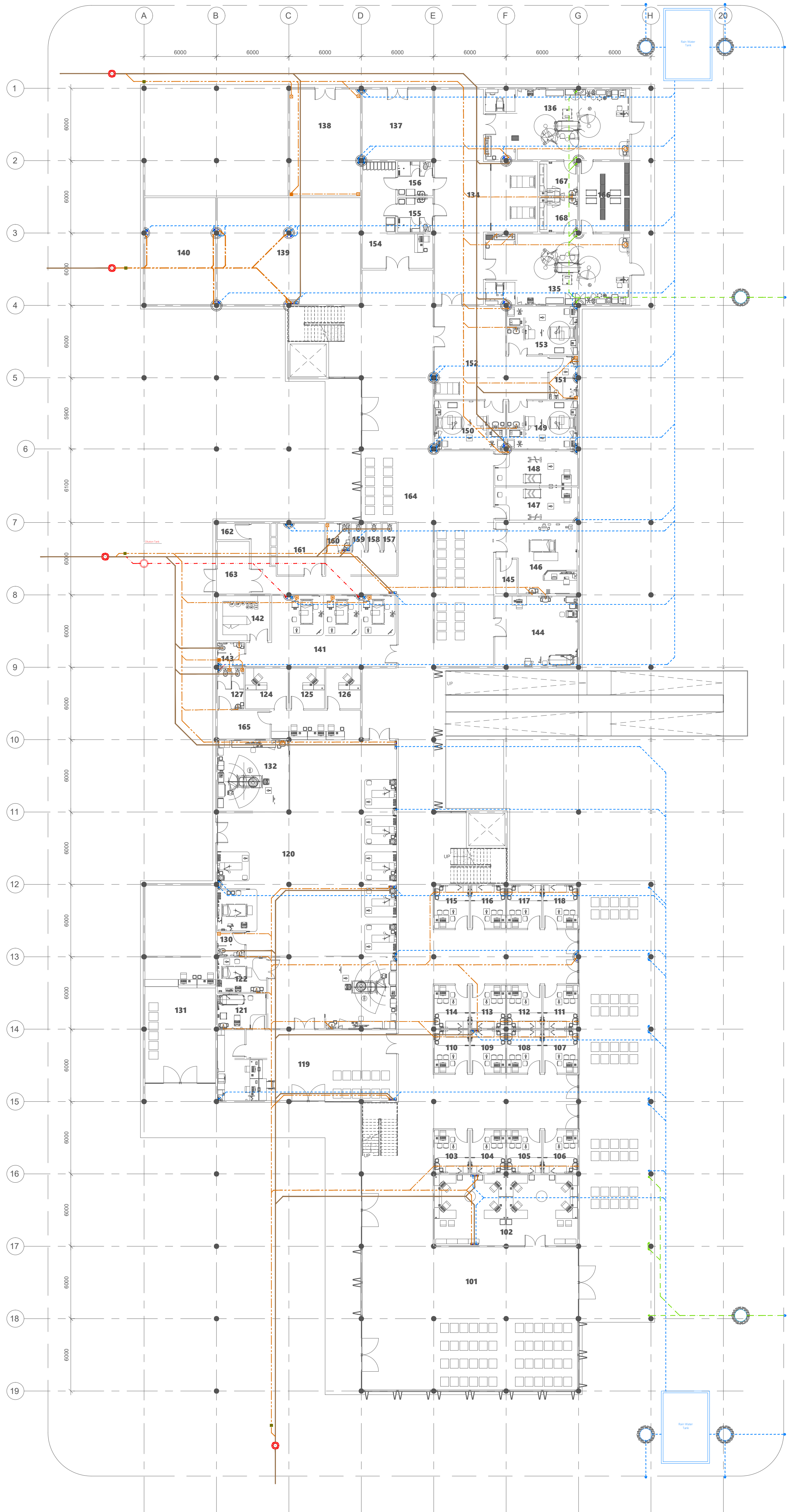


T: +960 333 3128 | E: info@epochassociates.com
W: www.epochassociates.com | P: Kijikoodhoo, Faridhee Magu, Malé, Republic of Maldives

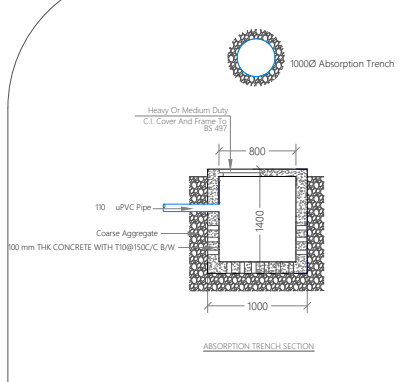
SECOND FLOOR PLUMBING LAYOUT

1:200

Rev.	Page
---	---
---	---
---	---
---	PL-03



- Legend
- Floor Drain
 - Floor Gully
 - 820 Stub For Washing Machine Or Tub
 - 1100 Soil Pipe (uPVC Pipe)
 - 1100 Soil Vent Pipe (uPVC Pipe)
 - 820 Waste Pipe (uPVC Pipe)
 - 820 Waste Vent Pipe (uPVC Pipe)
 - 400 Waste Pipe (uPVC Pipe)
 - 1100 Waste Pipe For Laundry (uPVC Pipe)
 - 630 Manhole Vent Pipe (uPVC Pipe)
 - 1100 Rain Water Pipes (uPVC Pipe)
 - 1100 Waste Pipes From Green Areas (uPVC Pipe)
 - 820 Lab Waste Pipe (CPVC Pipe)
 - 820 Lab Waste Vent Pipe (CPVC Pipe)
 - 900 Stub For Bed Pan Washer
 - 900 Stub For Dialysis Machine With Removable Cap
 - Manhole
 - Gully Trap
 - 1100 Rainwater Outlet Perforated Cowl
 - 1100 Rainwater Outlet
 - Bottle Trap
- Notes :-
- All Drainage Pipes Should Have At A Slope Of 1/150
 - All Floor Drains Should Have "P" Traps



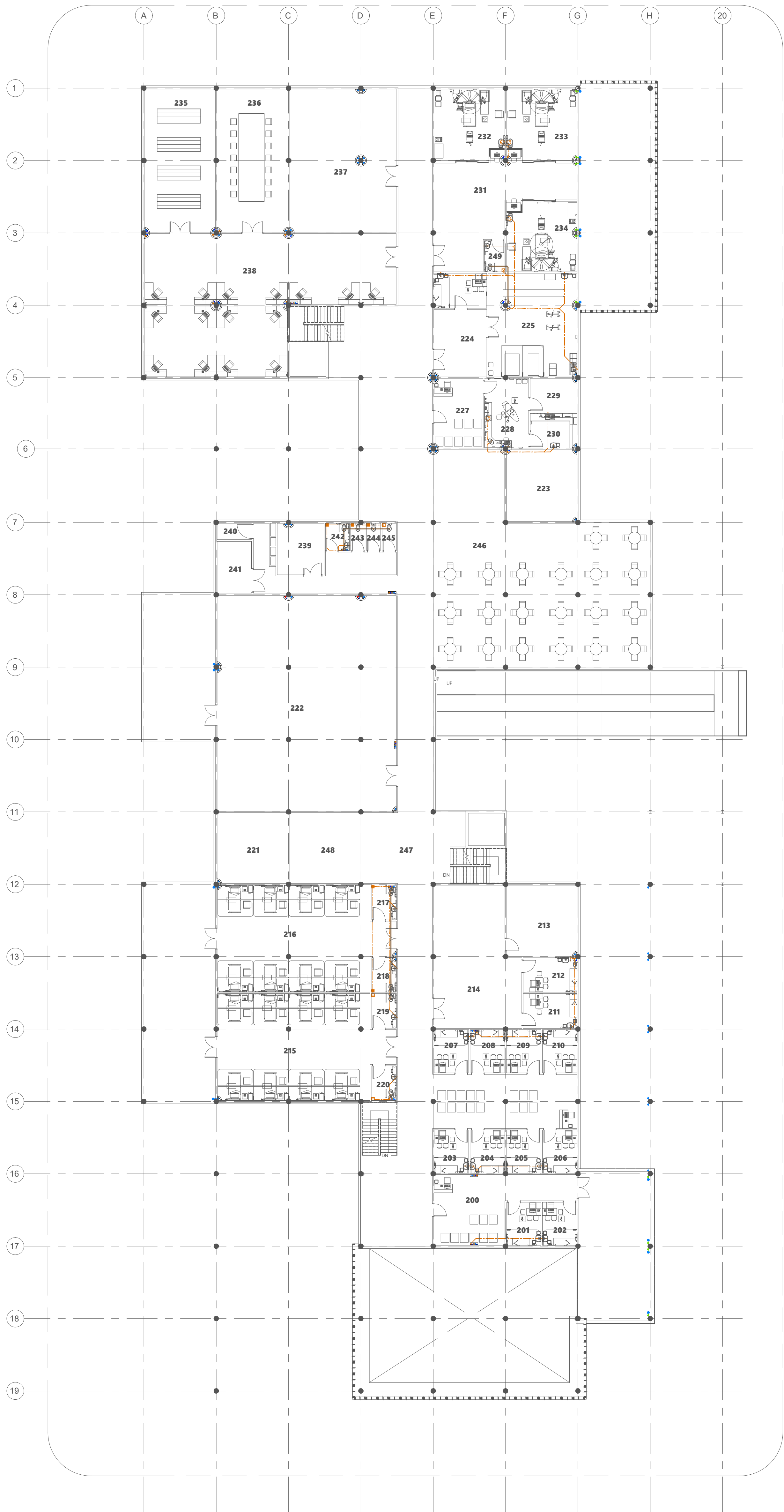
PROPOSED 02 STOREY BUILDING AT
N. VELIDHOO

Client:
**MINISTRY OF HEALTH,
MALDIVES**

December 2019
Services By: Hussain Rasheed
Checked By: Mohamed Rassam
Drawn By: Hussain Rasheed



T: +960 333 3328 E: info@epochassociates.com
W: www.epochassociates.com A: 20, Alifan Road, Malé, Maldives



- Legend
- Floor Drain
 - Floor Gully
 - 820 Stub For Washing Machine Or Tub
 - 1100 Soil Pipe (uPVC Pipe)
 - 1100 Soil Vent Pipe (uPVC Pipe)
 - 820 Waste Pipe (uPVC Pipe)
 - 820 Waste Vent Pipe (uPVC Pipe)
 - 400 Waste Pipe (uPVC Pipe)
 - 1100 Waste Pipe For Laundry (uPVC Pipe)
 - 630 Manhole Vent Pipe (uPVC Pipe)
 - 1100 Rain Water Pipes (uPVC Pipe)
 - 1100 Waste Pipes From Green Areas (uPVC Pipe)
 - 820 Lab Waste Pipe (CPVC Pipe)
 - 820 Lab Waste Vent Pipe (CPVC Pipe)
 - 900 Stub For Bed Pan Washer
 - 900 Stub For Dialysis Machine With Removable Cap
 - Manhole
 - Gully Trap
 - 1100 Rainwater Outlet Perforated Cowl
 - 1100 Rainwater Outlet
 - Bottle Trap
- Notes -
- All Drainage Pipes Should Have At A Slope Of 1/150
 - All Floor Drains Should Have "P" Traps

PROPOSED 02 STOREY BUILDING AT
N. VELIDHOO

Client:
**MINISTRY OF HEALTH,
MALDIVES**

December 2019

Services By: Hussain Rasheed
Checked By: Mohamed Rassam
Drawn By: Hussain Rasheed



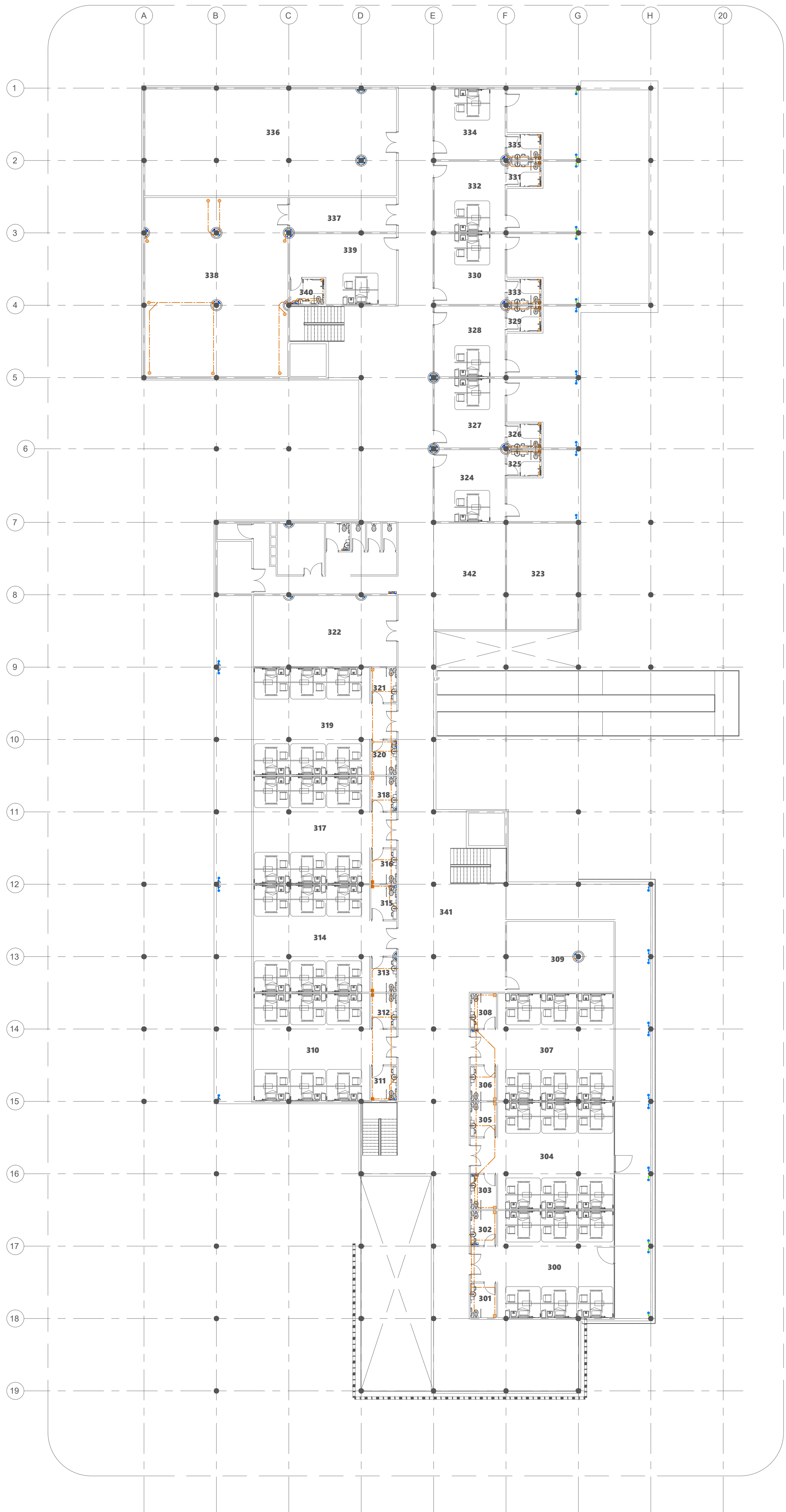
T: +960 333 3328 | E: info@epochassociates.com
W: www.epochassociates.com | P: Kigali, Kigali
Faridhee Magu, Malé Republic of Maldives

FIRST FLOOR DRAINAGE LAYOUT

1:200

Rev:	Page:
---	---
---	---
---	---

DR-02



- Legend
- Floor Drain
 - Floor Gully
 - 820 Stub For Washing Machine Or Tub
 - 1100 Soil Pipe (uPVC Pipe)
 - 1100 Soil Vent Pipe (uPVC Pipe)
 - 820 Waste Pipe (uPVC Pipe)
 - 820 Waste Vent Pipe (uPVC Pipe)
 - 4000 Waste Pipe (uPVC Pipe)
 - 1100 Waste Pipe For Laundry (uPVC Pipe)
 - 630 Manhole Vent Pipe (uPVC Pipe)
 - 1100 Rain Water Pipes (uPVC Pipe)
 - 1100 Waste Pipes From Green Areas (uPVC Pipe)
 - 820 Lab Waste Pipe (CPVC Pipe)
 - 820 Lab Waste Vent Pipe (CPVC Pipe)
 - 900 Stub For Bed Pan Washer
 - 900 Stub For Dialysis Machine With Removable Cap
 - Manhole
 - Gully Trap
 - 1100 Rainwater Outlet Perforated Cowl
 - 1100 Rainwater Outlet
 - Bottle Trap
- Notes :-
- All Drainage Pipes Should Have At A Slope Of 1/150
 - All Floor Drains Should Have "P" Traps

PROPOSED 02 STOREY BUILDING AT
N. VELIDHOO

Client:
**MINISTRY OF HEALTH,
MALDIVES**

December 2019

Services By: Hussain Rasheed
Checked By: Mohamed Rassam
Drawn By: Hussain Rasheed



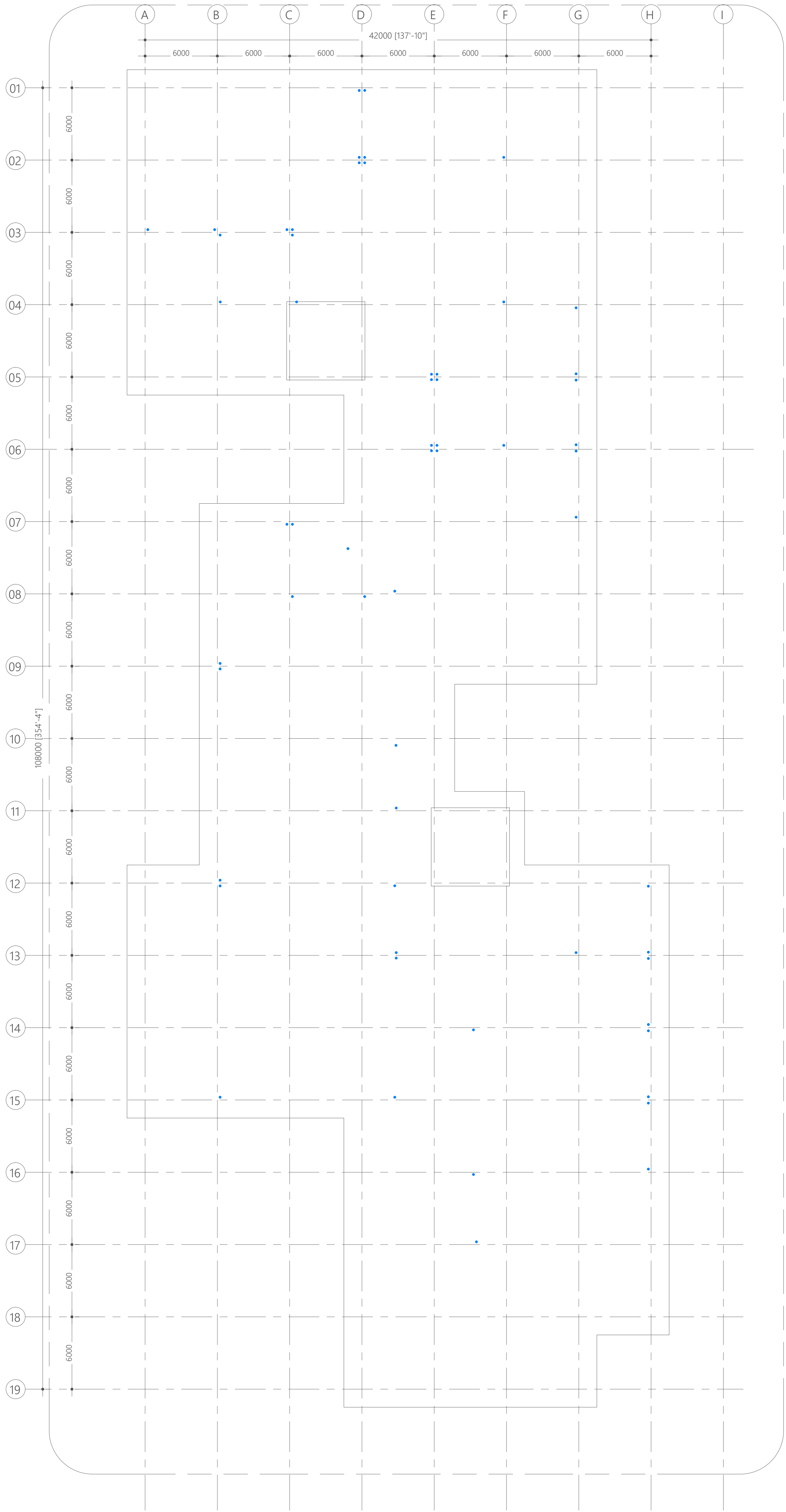
T: +960 333 3328 E: info@epochassociates.com
W: www.epochassociates.com A: 10, Alifanadu Road,
Faridhee Magu, Malé, Republic of Maldives

SECOND FLOOR DRAINAGE LAYOUT

1200

Rev:	Page:
---	---
---	---
---	---

DR-03



- Legend
- Floor Drain
 - Floor Gully
 - 820 Stub For Washing Machine Or Tub
 - 1100 Soil Pipe (uPVC Pipe)
 - 1100 Soil Vent Pipe (uPVC Pipe)
 - 820 Waste Pipe (uPVC Pipe)
 - 820 Waste Vent Pipe (uPVC Pipe)
 - 4000 Waste Pipe (uPVC Pipe)
 - 1100 Waste Pipe For Laundry (uPVC Pipe)
 - 630 Manhole Vent Pipe (uPVC Pipe)
 - 1100 Rain Water Pipes (uPVC Pipe)
 - 1100 Waste Pipes From Green Areas (uPVC Pipe)
 - 820 Lab Waste Pipe (CPVC Pipe)
 - 820 Lab Waste Vent Pipe (CPVC Pipe)
 - 900 Stub For Bed Pan Washer
 - 900 Stub For Dialysis Machine With Removable Cap
 - Manhole
 - Gully Trap
 - 1100 Rainwater Outlet Perforated Cowl
 - 1100 Rainwater Outlet
 - Bottle Trap
- Notes :-
- All Drainage Pipes Should Have At A Slope Of 1/150
 - All Floor Drains Should Have "P" Traps

PROPOSED 02 STOREY BUILDING AT
N. VELIDHOO

Client:
**MINISTRY OF HEALTH,
MALDIVES**

December 2019

Services By: Hussain Rasheed
Checked By: Mohammed Rassam
Drawn By: Hussain Rasheed

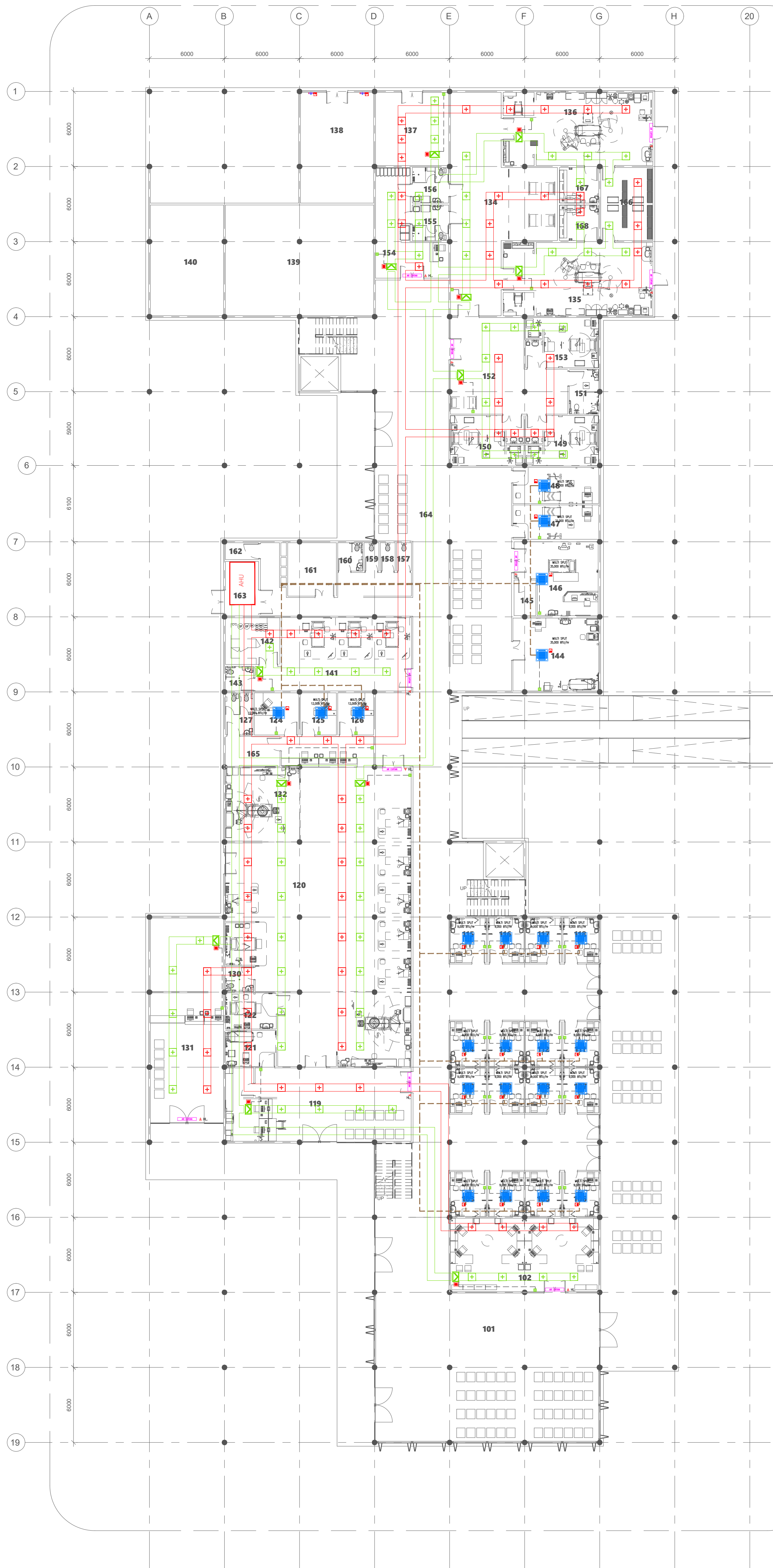


T: +960 333 3138 | E: info@epochassociates.com
W: www.epochassociates.com | P: Alifanaduwa, Faridhee Magu, Malé, Republic of Maldives

ROOF DRAINAGE LAYOUT

1:200

Rev:	Page:
---	---
---	---
---	---
---	DR-04



- Legend**
- Ceiling Concealed Airconditioner
 - Ceiling Surface Supply Air Grille
 - Ceiling Surface Return Air Grille
 - 4-Way Cassette Air Conditioner
 - Multi split outdoor condensing unit (floor standing)
 - Thermostat - Remote Controller
 - 1500 mm Length Air Curtain
 - Wall Mounted Exhaust Fan
 - 15A Switched Socket @ H.L.
 - 13A Power Socket
 - TPN Isolator
- Notes:**
- All Ceiling surface return air grilles and AHU should be equipped with HEPA filters.
 - Number of Ceiling Surface Air Grilles and duct layouts shall be confirmed from Manufacturers and consultants.

