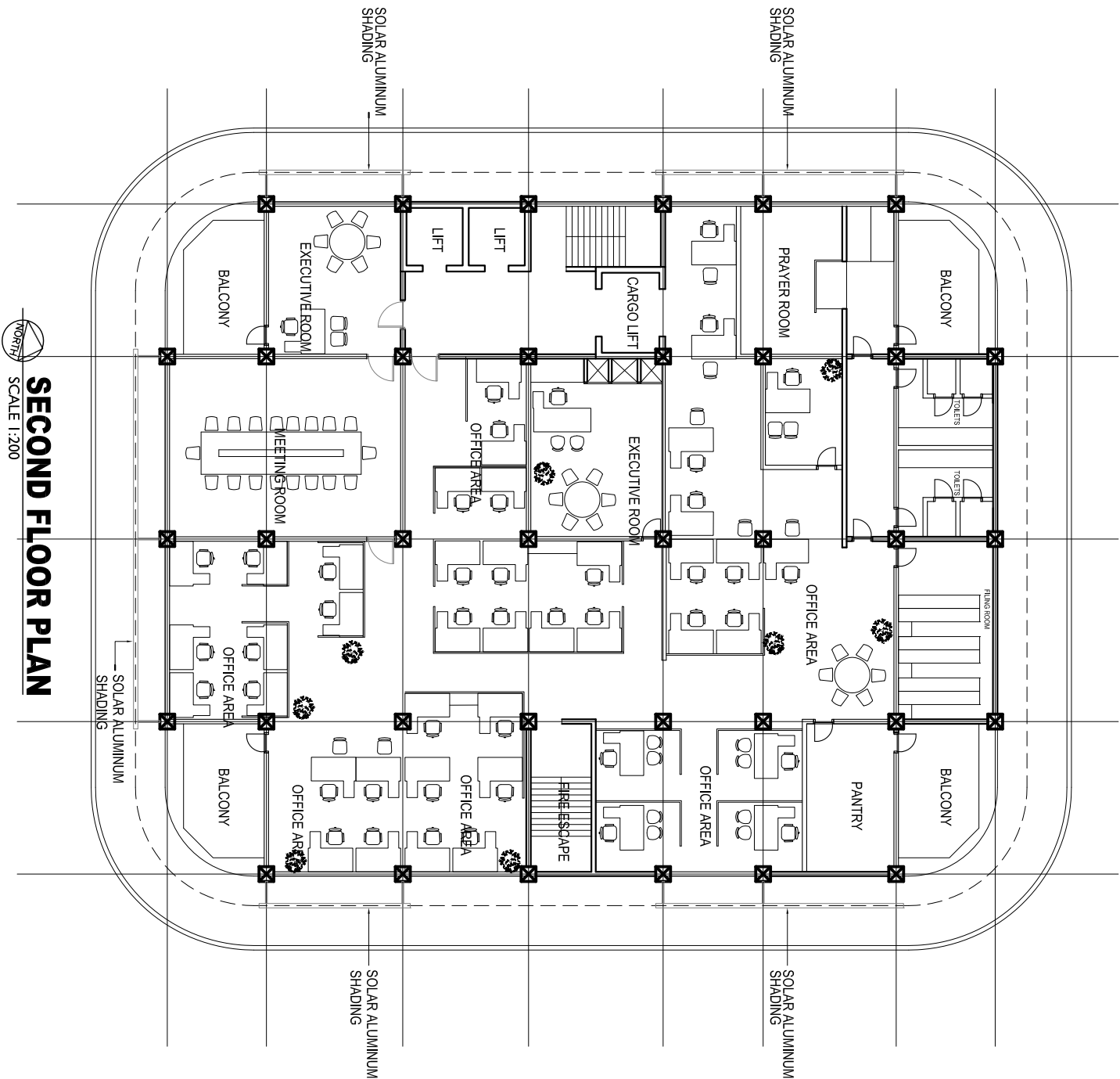


CONCEPTUAL DESIGN - OFFICE BUILDING AT MIV



SECOND FLOOR PLAN
SCALE 1:200

AMENDMENTS:

NOTE:

CHECKER:

CONTENTS:

SECOND FLOOR PLAN

SCALE: 1:200

PROJECT:

OFFICE BUILDING AT MIV

CLIENT:

MHI

ARCH. DESIGN: THOL

STRUC. DESIGN:

DRAWN BY: THOL

DATE: JAN 2017

FILE:

DWG NO:

A01/04



MINISTRY OF HOUSING & INFRASTRUCTURE
INFRASTRUCTURE DEPARTMENT
MAHEENI MAOLU, MAE'ANNU, MALÉ', 20392, REPUBLIC OF MALDIVES
TEL: +960 3004300, FAX: +960 3004301