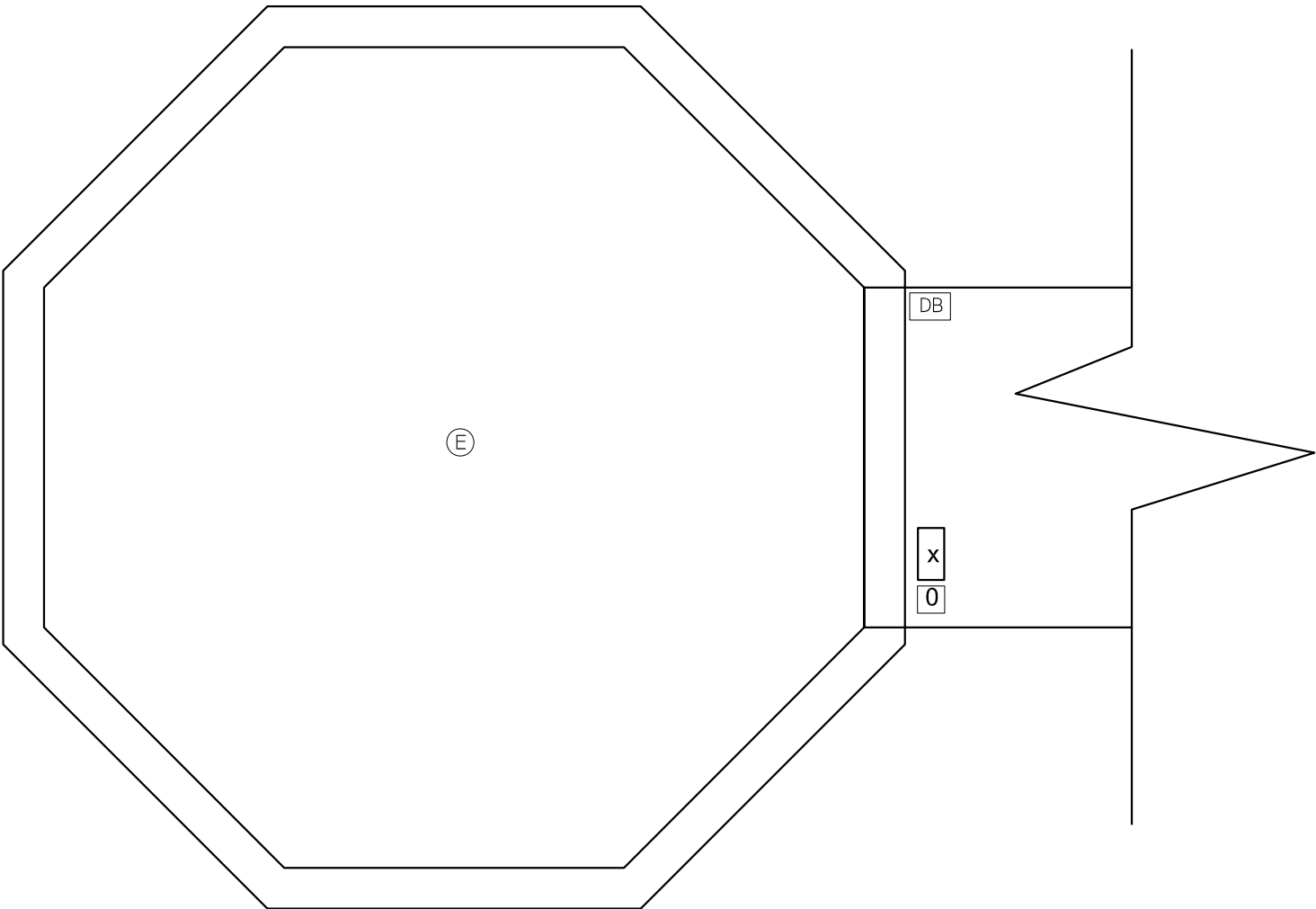


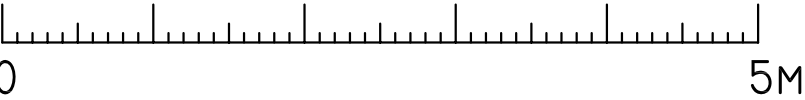
- 1 RECREATIONAL FACILITY AND FLOATING DECK "A" AT DHADIMAGU KILHI
- 2 BOARD WALK "B" AT DHANDIMAGU KILHI
- 3 BOARD WALK "C" AT BANDAARA KILHI

| | | | | | | | | | | |
|--|--|--|---|--|-----------------|----------------|--|---------------------------------------|------------------|----------------------------|
| NOVEA ENGINEERING PO Box 3013 Male Maldives m : +96099999413 e : fayaz@dhivehinet.net.mv | <i>architect:</i> abel. island life — eco-cultural consulting | <i>assistant architect:</i> Aminath Abdulla | <i>environmental consultant:</i> SANDCAYS PVT LTD H. Alilhuras, Lonuzlaaraly Magu, Male', Maldives t: +960 3307675 e: info@sandcays.com www.sandcays.com Sandcays | <i>Client</i> Ministry of Environment & Energy | <i>Facility</i> | <i>Details</i> | | | <i>Revisions</i> | |
| | | | | <i>Project</i> Gn. Fuahmulah Eco-tourism Facilities | | | | <i>Drawing Title</i> Location Plan | | <i>Scale :</i> 1:10,000 |
| | | | | | | | | | | |

NOTE: ALL DESIGNS ABOVE ARE PROTECTED BY COPYRIGHT. NO PART SHOULD BE REPRODUCED (PHOTOCOPIED OR ANY OTHER MEANS) WITHOUT PERMISSION .



PLAN - PAVILION
SCALE 1:150M ON A3



- F

40W LED

I

I SWITCH
FOR TOILET MAIN LIGHT

J

I SWITCH
FOR TOILET MIRROR LIGHT

K

I SOCKET ABOVE
FOR TOILET WATER HEATER (IF NECESSARY)

O

1 switch
for recreation facility waiting area
/ pavilion

N

1 switch for fan
- m

METER BOARD

DB

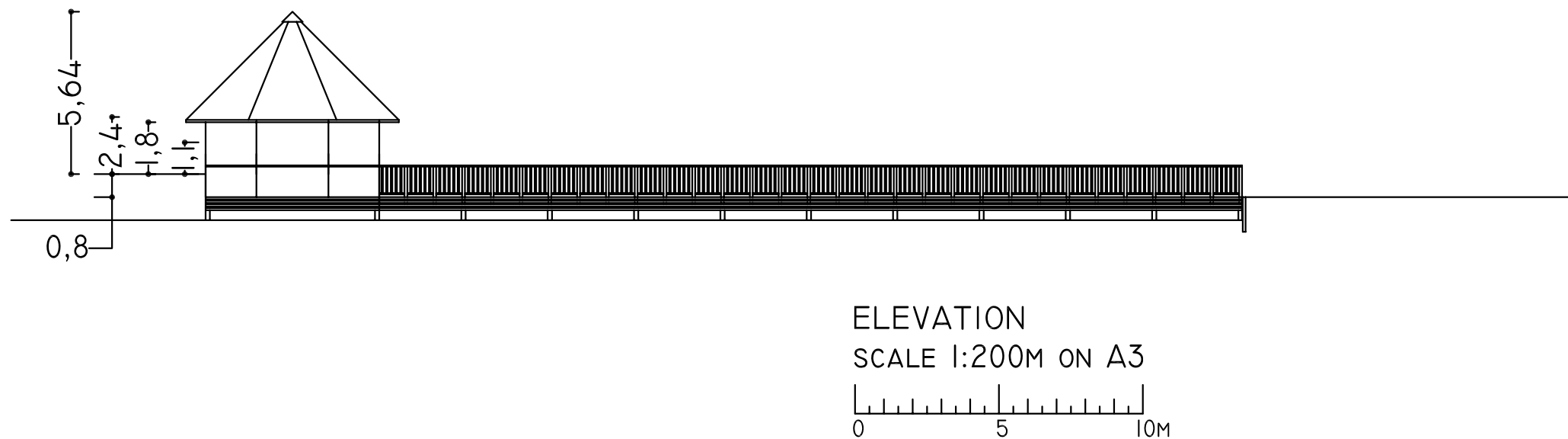
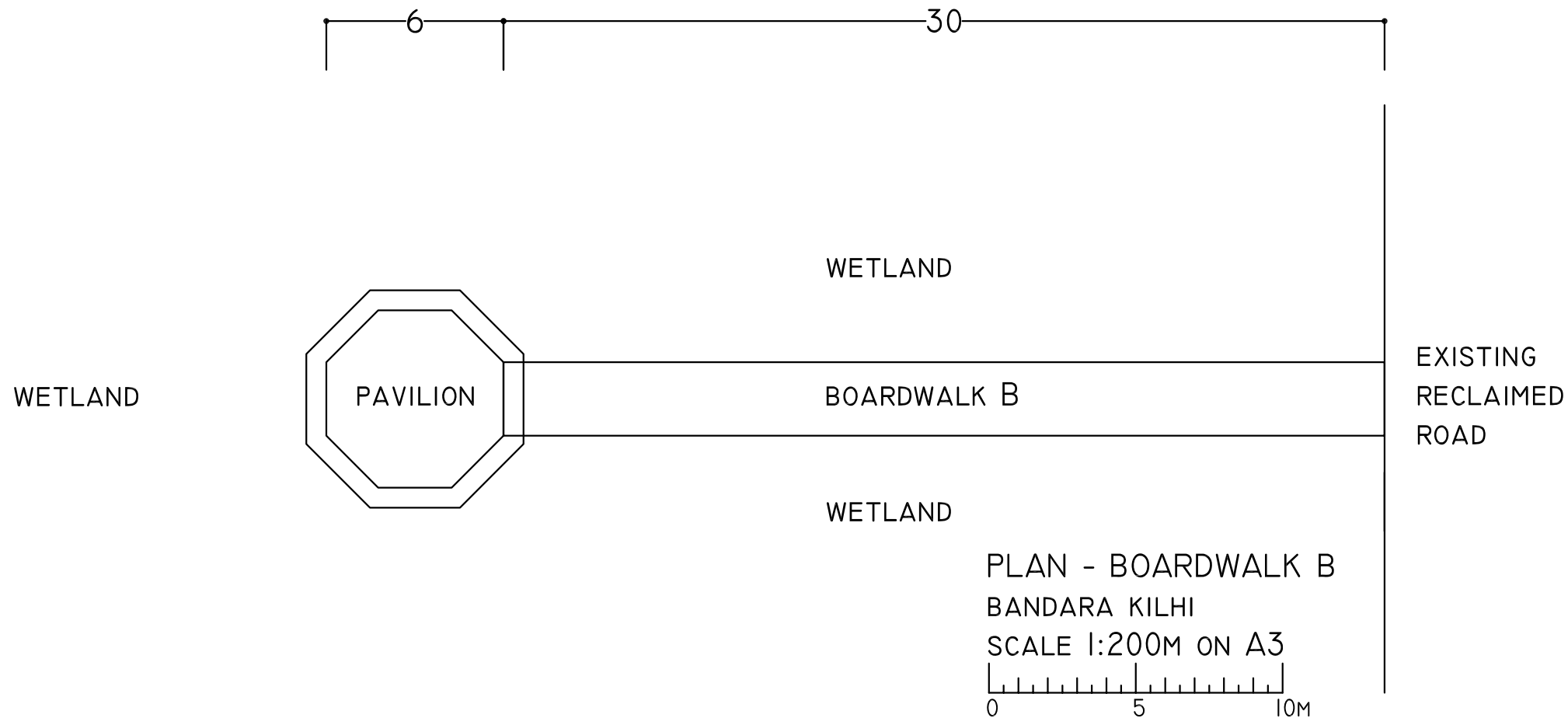
DISTRIBUTION BOARD

E

40W LED

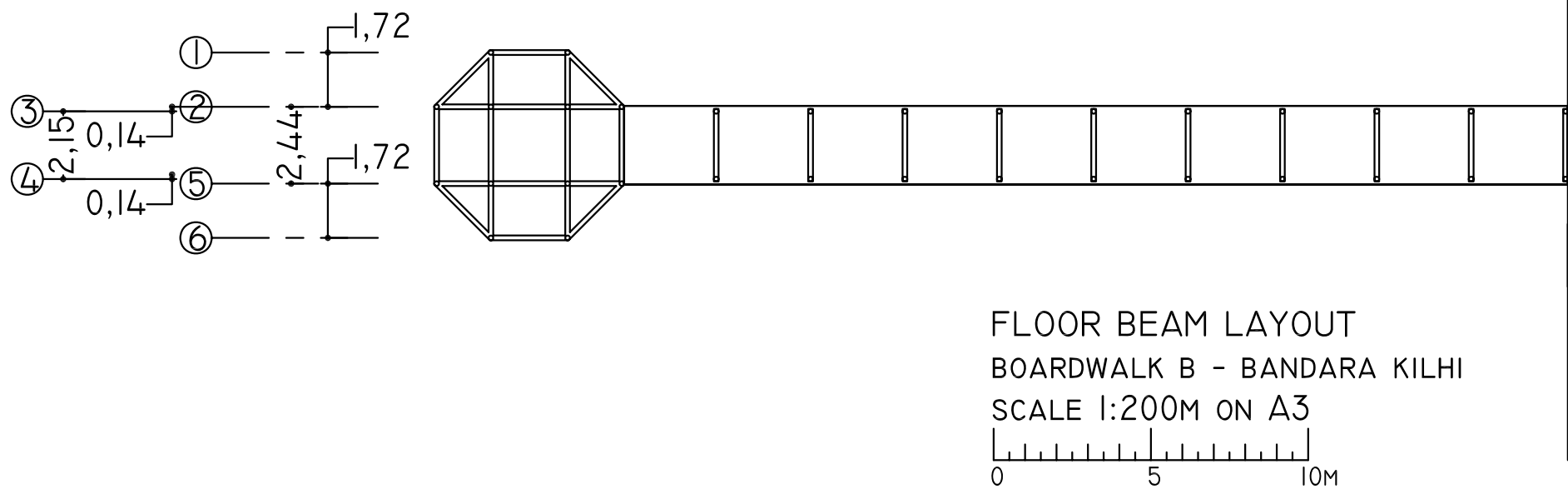
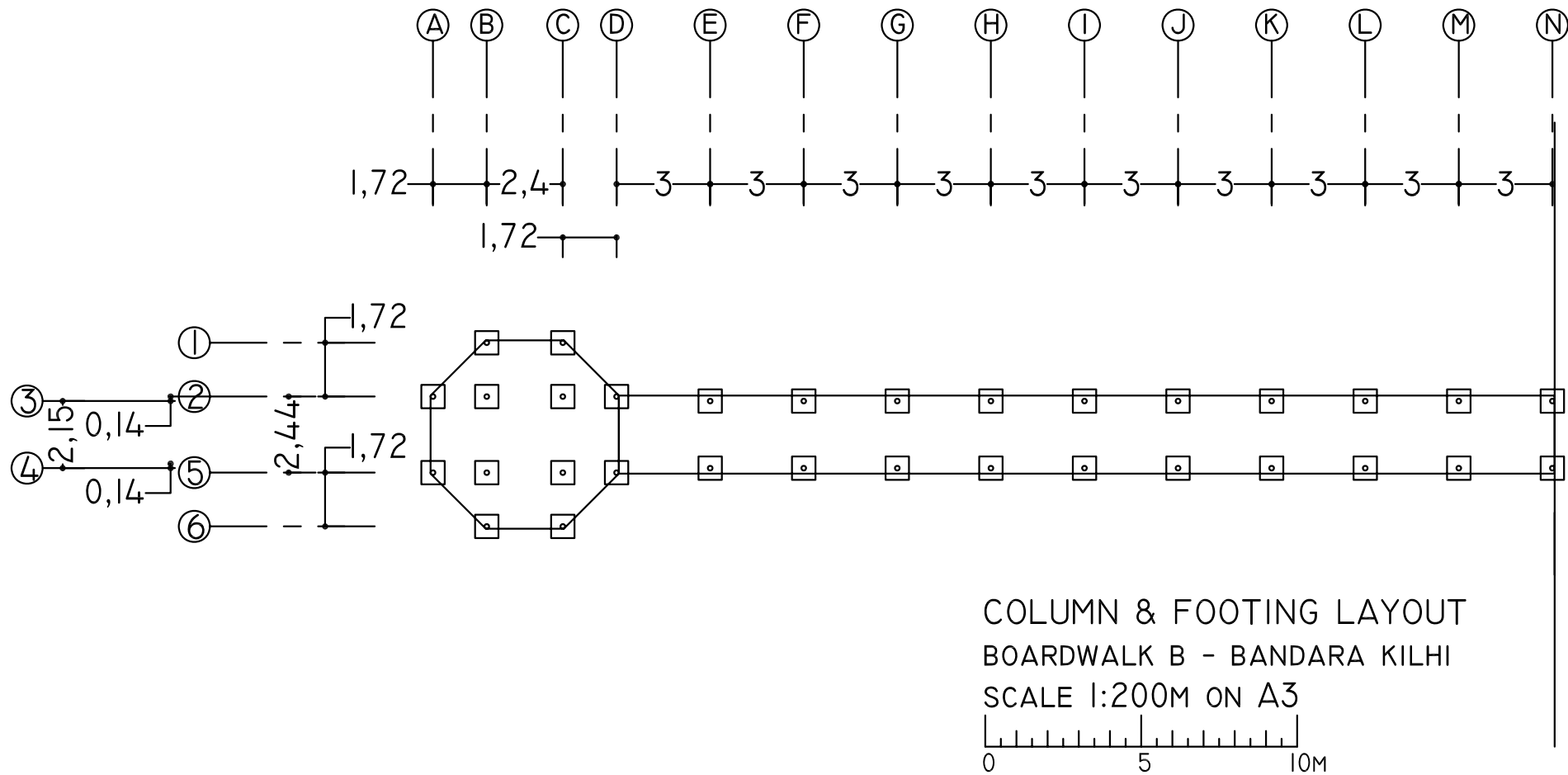
x

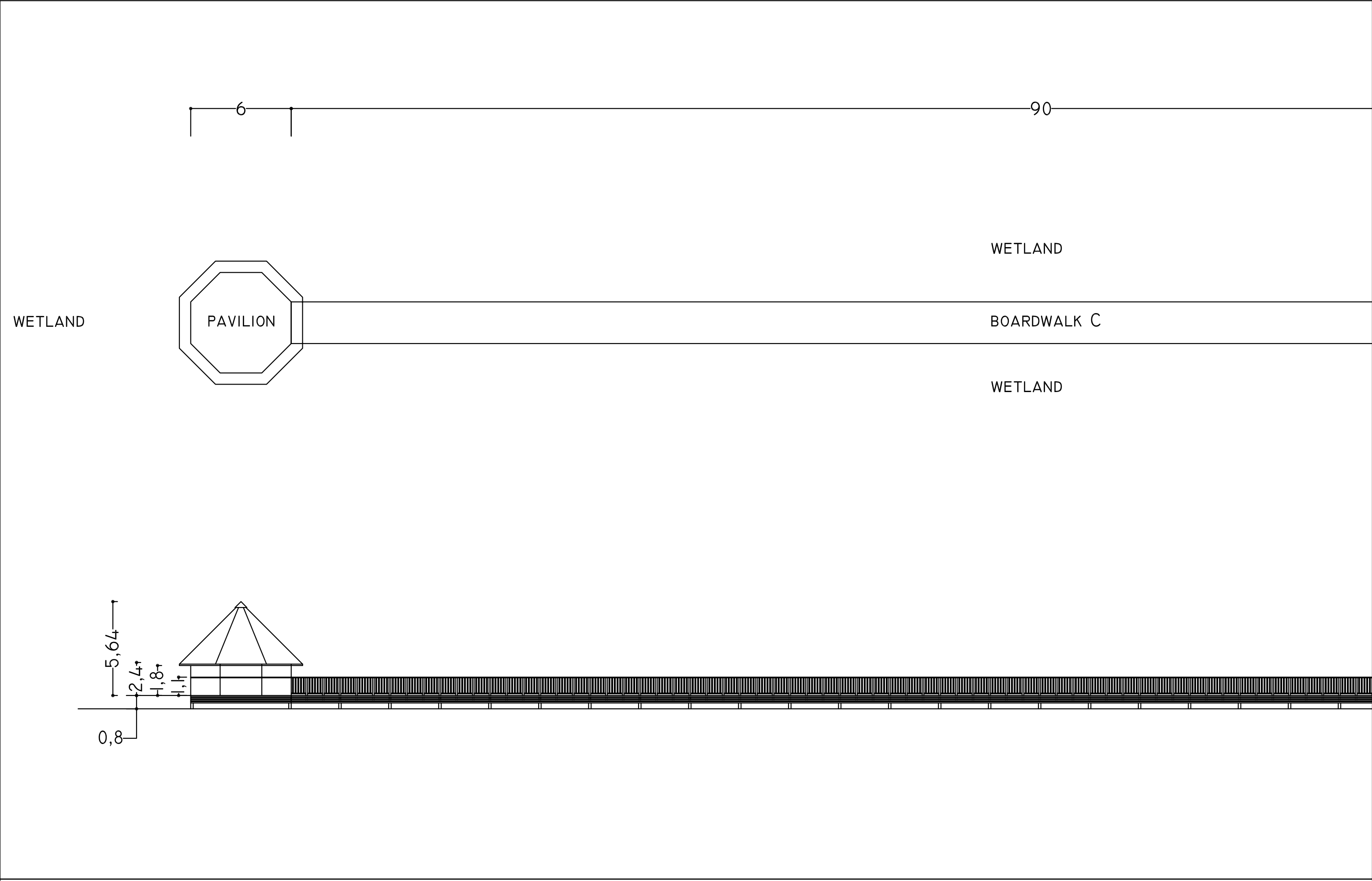
FIRE EXTINGUISHER



| | | | | | | | | | | | | |
|---|---|--|--|--|--|---|--|--|---|---|----------------------|--|
| <div>NOVEA ENGINEERING</div> <div>PO Box 3013 Male Maldives m : +9609999413 e : fayaz@dhivehinet.net.mv</div> | <div>architect:</div> <div>abel.</div> <div>island life — eco-cultural consulting</div> | <div>assistant architect:</div> <div>Aminath Abdulla</div> <div>quantity surveyor:</div> <div>Nasira Nasir</div> | <div>environmental consultant:</div> <div>SANDCAYS PVT LTD</div> <div>H. Alihuras, Lonuziyaaraiy Magu, Male', Maldives t: +960 3307675 e: Info@sandcays.com www.sandcays.com</div> <div>Sandcays</div> | <div>Client</div> <div>Ministry of Environment & Energy</div> | | <div>Facility</div> <div>Boardwalk B</div> | | <div>Details</div> <div>1. Plan 2. Elevation</div> | | | <div>Revisions</div> | |
| | | | | <div>Project</div> <div>Gn. Fuahmulah Eco-tourism Facilities</div> | | <div>Drawing Title</div> <div>Layout Plan</div> | | <div>Scale :</div> <div>1:200</div> | <div>Date:</div> <div>31 January 2017</div> | 1 | | |
| | | | | | | | | | | 2 | | |
| | | | | | | | | | | | | |

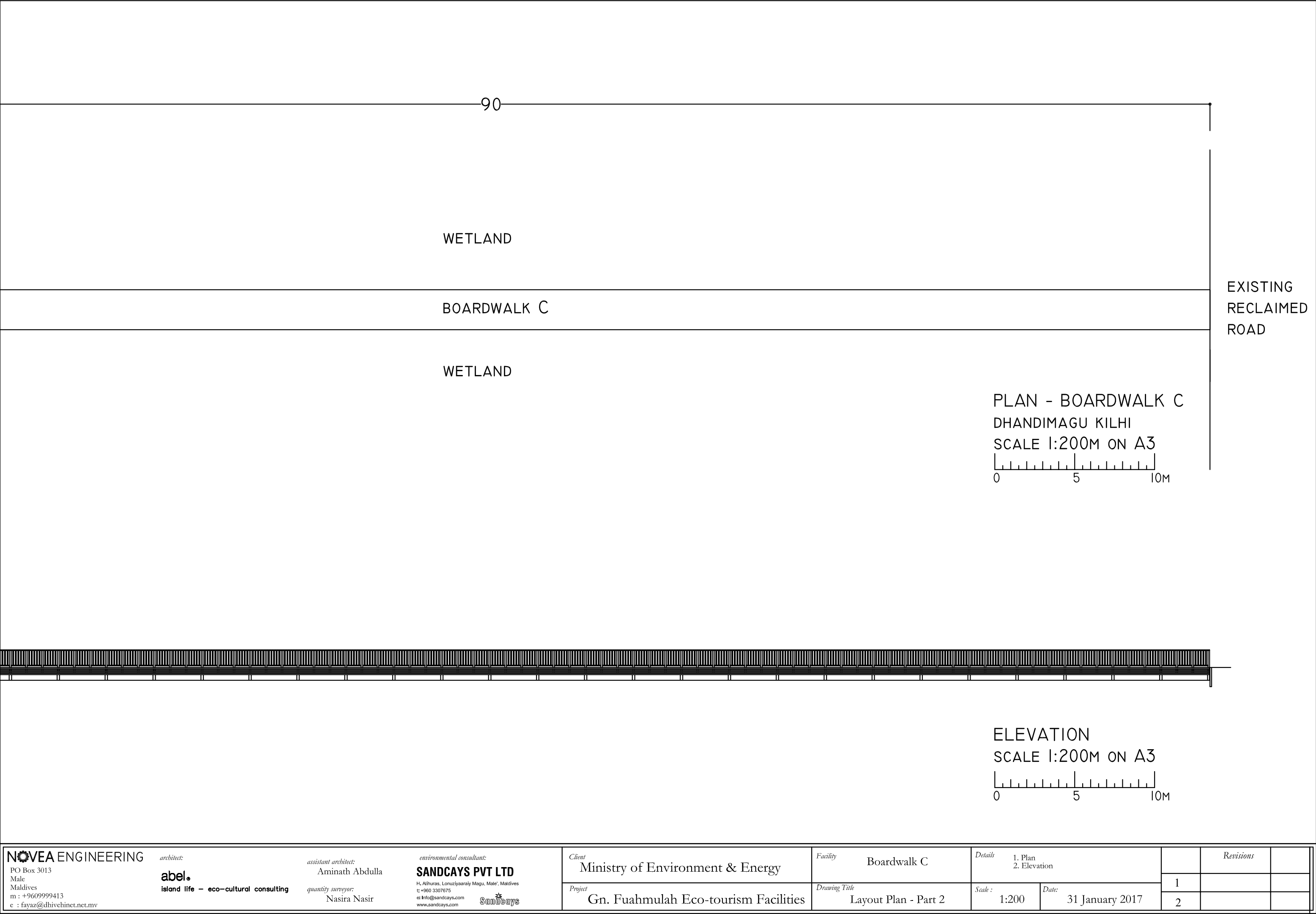
NOTE: ALL DESIGNS ABOVE ARE PROTECTED BY COPYRIGHT. NO PART SHOULD BE REPRODUCED (PHOTOCOPIED OR ANY OTHER MEANS) WITHOUT PERMISSION .

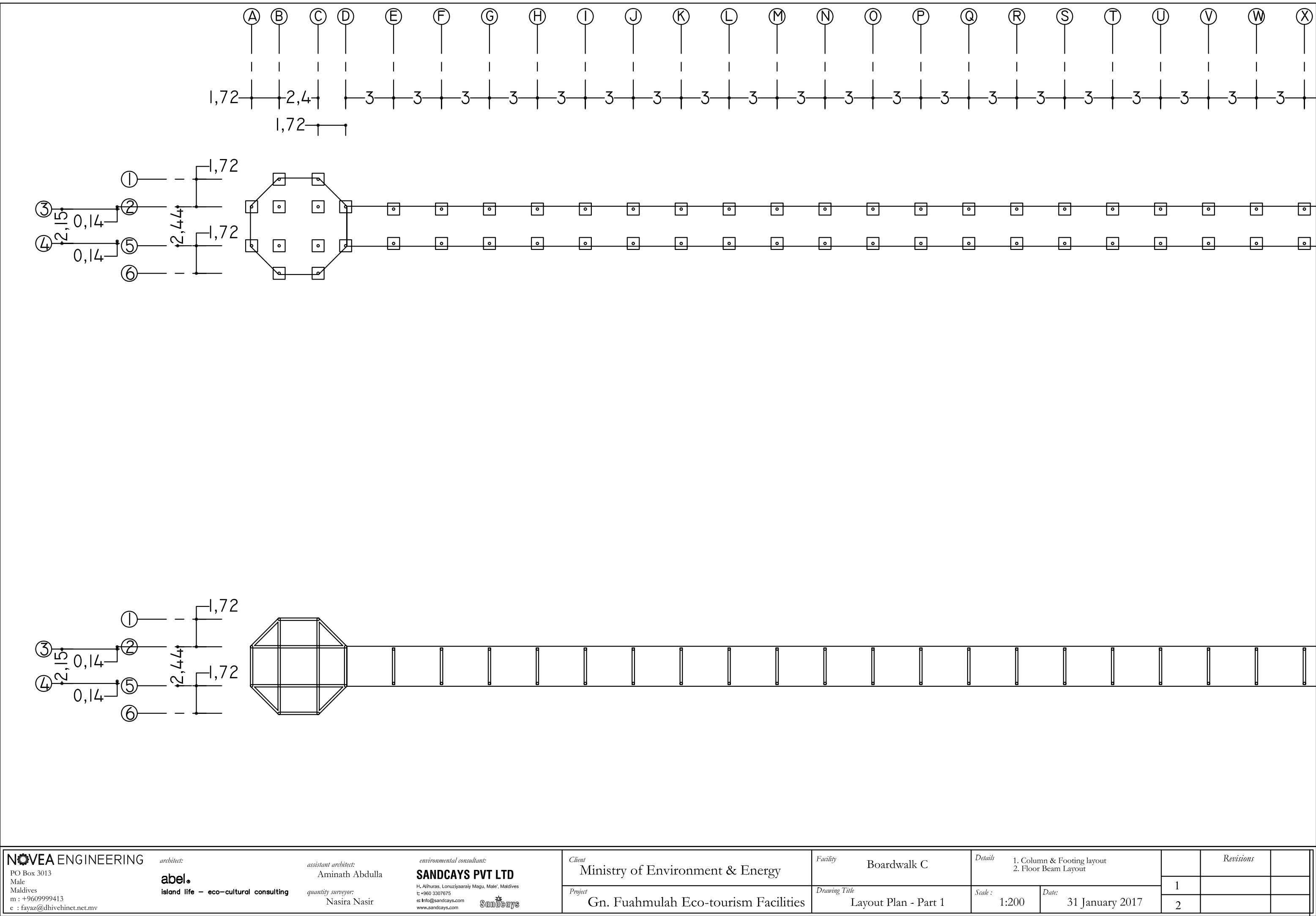


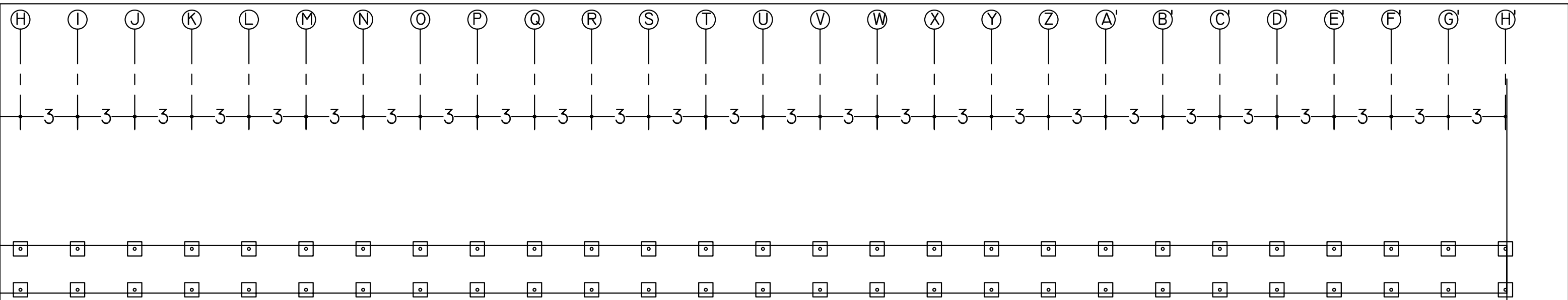


| | | | | | | | | | | |
|---|---|--|---|--|--|---|---|---|-----------|--|
| <div>NOVEA ENGINEERING</div> <div>PO Box 3013</div> <div>Male</div> <div>Maldives</div> <div>m : +9609999413</div> <div>e : fayaz@dhivehinet.net.mv</div> | <div>architect:</div> <div>abel.</div> <div>island life – eco-cultural consulting</div> | <div>assistant architect:</div> <div>Aminath Abdulla</div> <div>quantity surveyor:</div> <div>Nasira Nasir</div> | <div>environmental consultant:</div> <div>SANDCAYS PVT LTD</div> <div>H. Alihuras, Lonuziyaaraiy Magu, Male', Maldives</div> <div>t: +960 3307675</div> <div>e: info@sandcays.com</div> <div>www.sandcays.com</div> <div>Sandcays</div> | <div>Client</div> <div>Ministry of Environment & Energy</div> | <div>Facility</div> <div>Boardwalk C</div> | <div>Details</div> <div>1. Plan</div> <div>2. Elevation</div> | | | Revisions | |
| | | | | <div>Project</div> <div>Gn. Fuahmulah Eco-tourism Facilities</div> | <div>Drawing Title</div> <div>Layout Plan - Part 1</div> | <div>Scale :</div> <div>1:200</div> | <div>Date:</div> <div>31 January 2017</div> | 1 | | |
| | | | | | | | | 2 | | |

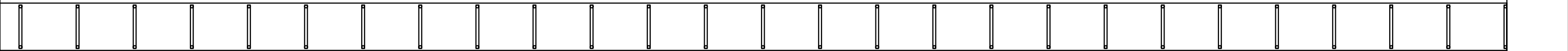
NOTE: ALL DESIGNS ABOVE ARE PROTECTED BY COPYRIGHT. NO PART SHOULD BE REPRODUCED (PHOTOCOPIED OR ANY OTHER MEANS) WITHOUT PERMISSION .








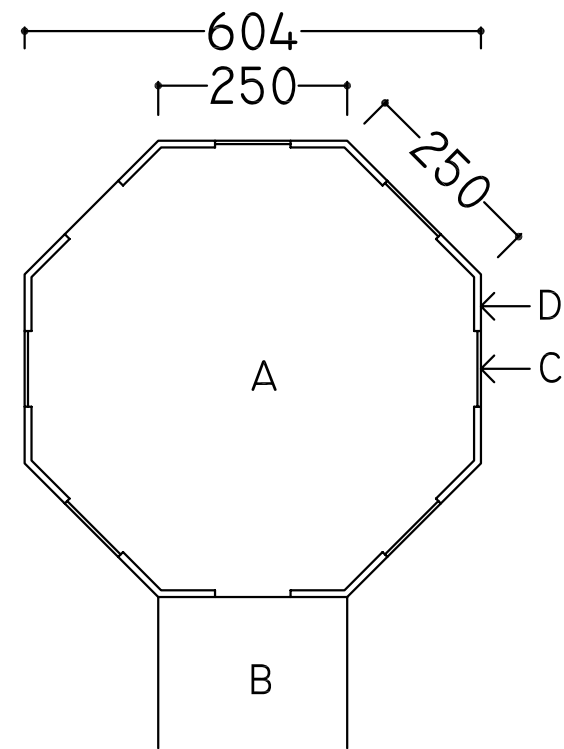
COLUMN & FOOTING LAYOUT
BOARDWALK C - DHANDIMAGU KILHI
SCALE 1:200M ON A3



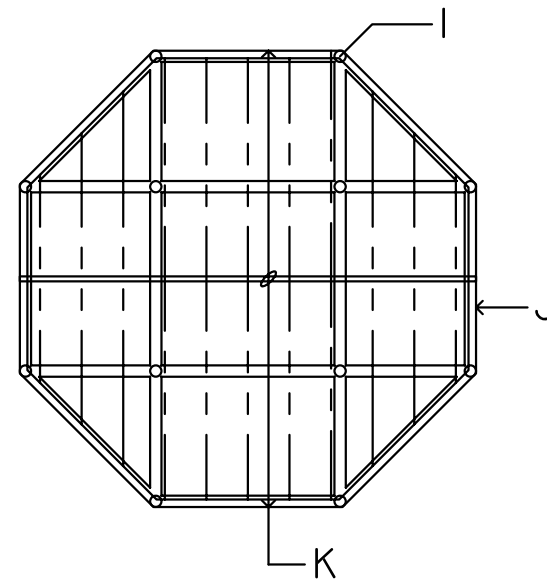
FLOOR BEAM LAYOUT
BOARDWALK C - DHANDIMAGU KILHI
SCALE 1:200M ON A3

| | | | | | | | | | | |
|---|---|--|---|--|--|---|---|---|----------------------|--|
| <div>NOVEA ENGINEERING</div> <div>PO Box 3013 Male Maldives m : +9609999413 e : fayaz@dhivehinet.net.mv</div> | <div>architect:</div> <div>abel.</div> <div>island life — eco-cultural consulting</div> | <div>assistant architect:</div> <div>Aminath Abdulla</div> <div>quantity surveyor:</div> <div>Nasira Nasir</div> | <div>environmental consultant:</div> <div>SANDCAYS PVT LTD</div> <div>H. Alihuras, Lonuziyaaraiy Magu, Male', Maldives t: +960 3307675 e: Info@sandcays.com www.sandcays.com</div> <div></div> | <div>Client</div> <div>Ministry of Environment & Energy</div> | <div>Facility</div> <div>Boardwalk C</div> | <div>Details</div> <div>1. Column & Footing layout 2. Floor Beam Layout</div> | | | <div>Revisions</div> | |
| | | | | <div>Project</div> <div>Gn. Fuahmulah Eco-tourism Facilities</div> | <div>Drawing Title</div> <div>Layout Plan - Part 2</div> | <div>Scale :</div> <div>1:200</div> | <div>Date:</div> <div>31 January 2017</div> | 1 | | |
| | | | | | | | | 2 | | |

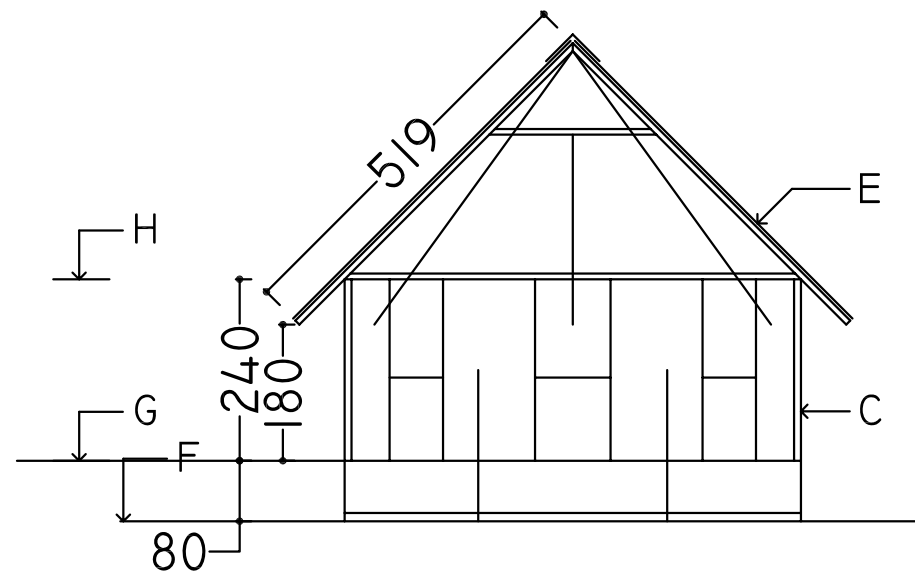
NOTE: ALL DESIGNS ABOVE ARE PROTECTED BY COPYRIGHT. NO PART SHOULD BE REPRODUCED (PHOTOCOPIED OR ANY OTHER MEANS) WITHOUT PERMISSION .



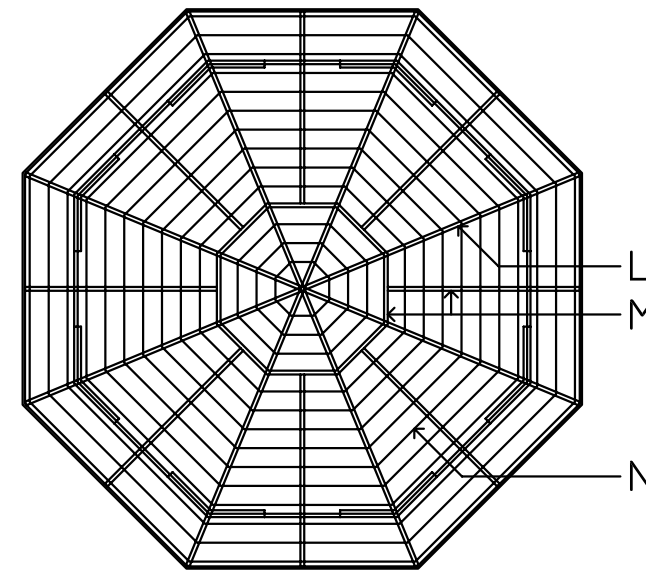
PLAN - PAVILION



PLAN - FLOOR STRUCTURE



SECTION
FOR PAVILION ELEVATION
REFER BOARDWALK ELEVATION



PLAN - ROOF STRUCTURE

- A SHADED PAVILION
- B BOARDWALK
- C 4x9 RAILING
- D 9 THICK WOOD PANEL WALL
- E 'THOSHALI' ROOF AT 45 DEGREE ON 8x7,5DIA WOOD HIP FRAME
- F HIGH TIDE LEVEL
- G FLOOR LEVEL
- H WALL PLATE LEVEL
- I 15 DIA RC COLUMN X 12 NOS. (REFER DETAIL)
- J 15x25 RC BEAM (REFER DETAIL)
- K 4x9 COMPOSITE ECO WOOD BOARDS ON 10x15 COMPOSITE ECO WOOD JOISTS AT 55 CENTERS
- L 5x19 'HIP' RAFTER
- M 5x14 RAFTER
- N 3,5x3,5 BATTENS @25 FOR THATCH

NOVEA ENGINEERING

PO Box 3013
Male
Maldives
m : +9609999413
e : fayaz@dhivehinet.net.mv

architect:

abel.

island life - eco-cultural consulting

assistant architect:

Aminath Abdulla

quantity surveyor:

Nasira Nasir

environmental consultant:

SANDCAYS PVT LTD

H. Alihuras, Lonuziyaaraiy Magu, Male', Maldives
t: +960 3307675
e: info@sandcays.com
www.sandcays.com

Sandcays

Client

Ministry of Environment & Energy

Project

Gn. Fuahmulah Eco-tourism Facilities

Facility

Boardwalk C

Drawing Title

Pavilion

Details

1. Plan
2. Floor Structure
3. Cross Section
4. Roof Structure

Scale :

1:100

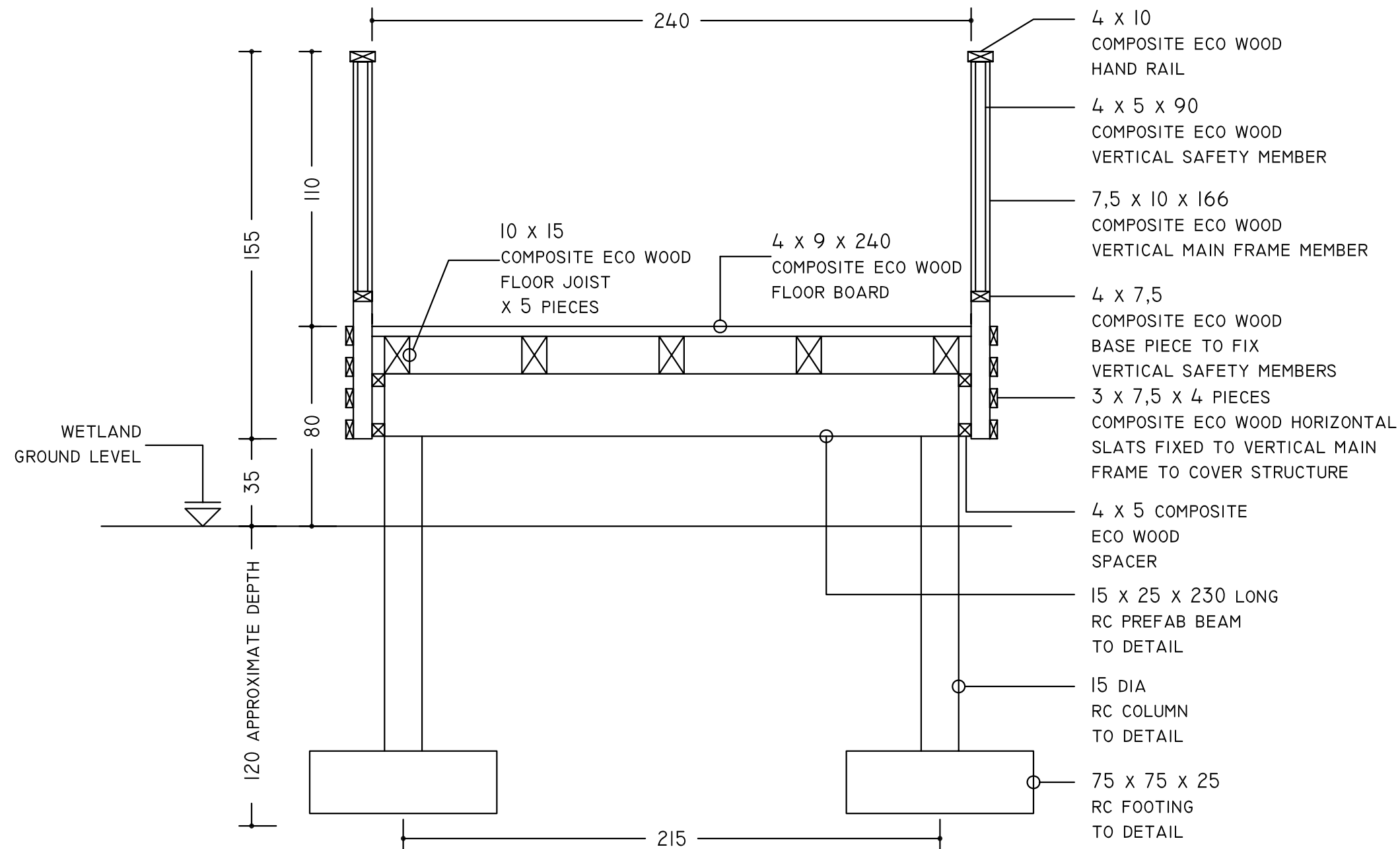
Date:

31 January 2017

Revisions

1

2



BOARDWALK

TYPICAL DETAIL SECTION OF BOARDWALK WITH RAILING DETAIL

NOTE: EXCEPT CONCRETE OTHERS COMPOSITE ECO-WOOD

NOVEA ENGINEERING

architect:

abel.

island life — eco-cultural consulting

assistant architect:

Aminath Abdulla

quantity surveyor:

Nasira Nasir

environmental consultant:

SANDCAYS PVT LTD

H. Alihuras, Lonuziyaaraiy Magu, Male', Maldives
t: +960 3307675
e: info@sandcays.com
www.sandcays.com

Sandcays

Client

Ministry of Environment & Energy

Project

Gn. Fuahmulah Eco-tourism Facilities

Facility

Boardwalk C

Drawing Title

Detail Section

Details

1. Railings
2. Concrete Members

Scale :

1: 20

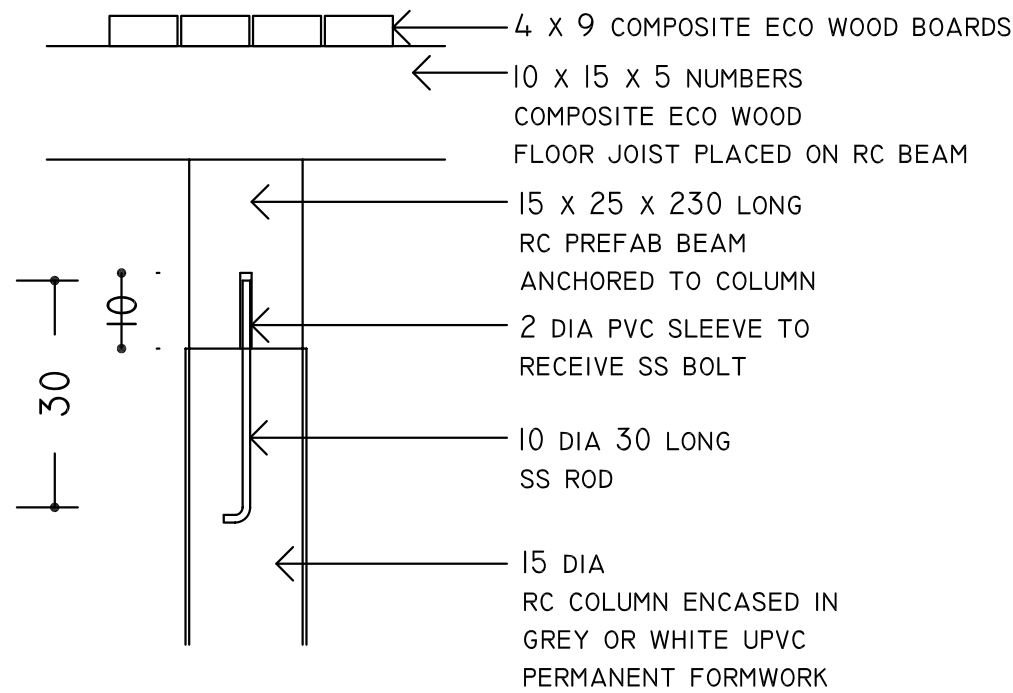
Date:

31 January 2017

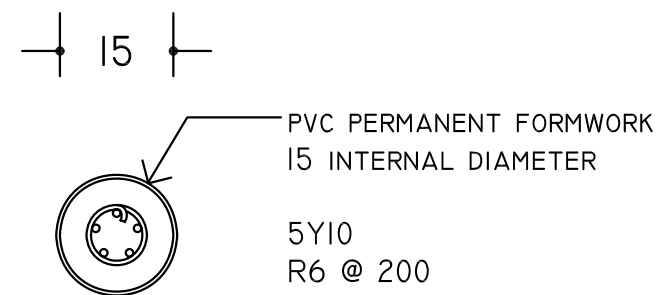
Revisions

1

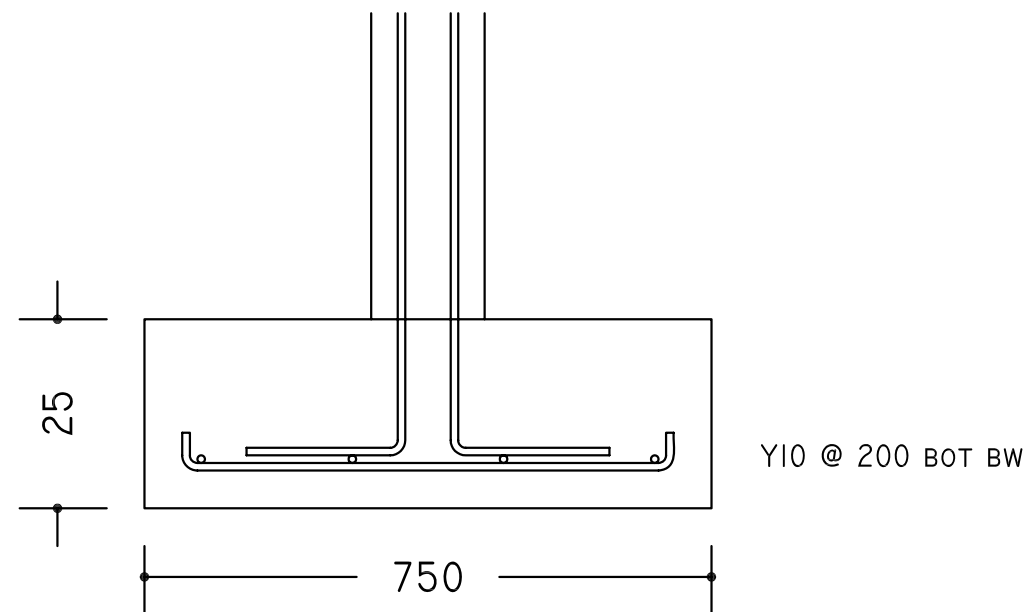
2



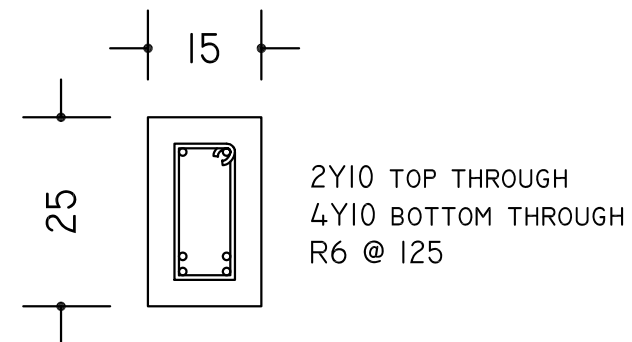
COLUMN & BEAM CONNECTION DETAIL
IN LONG SECTION
BOARDWALK B & C



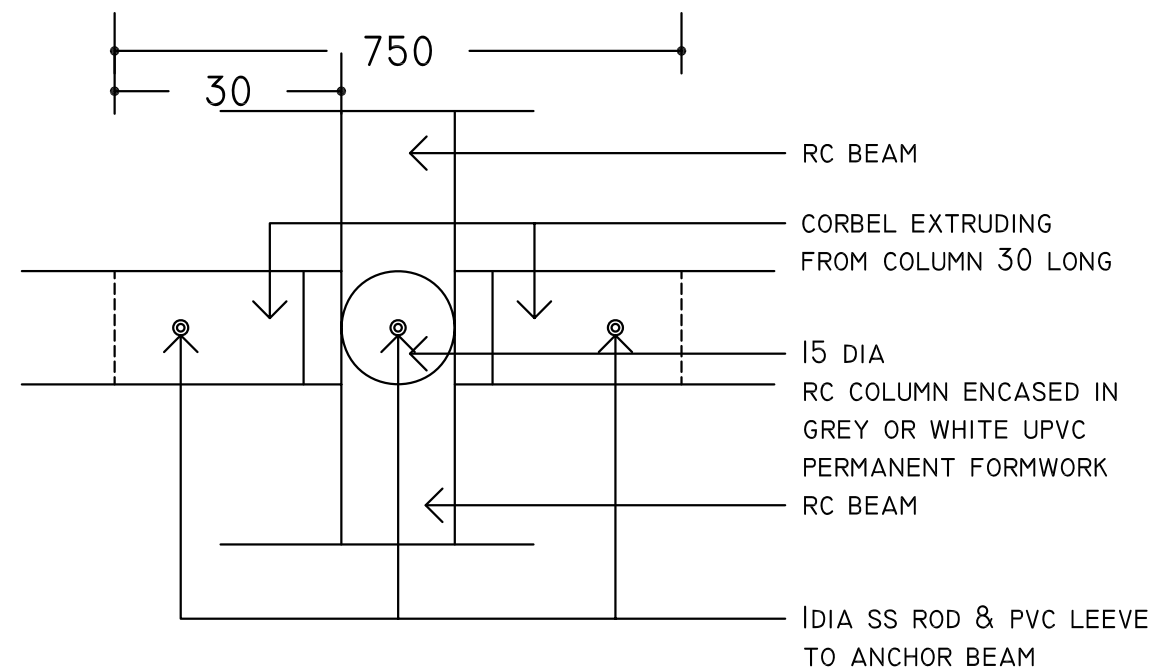
RC COLUMN DETAIL
BOARDWALK B, C & PAVILION



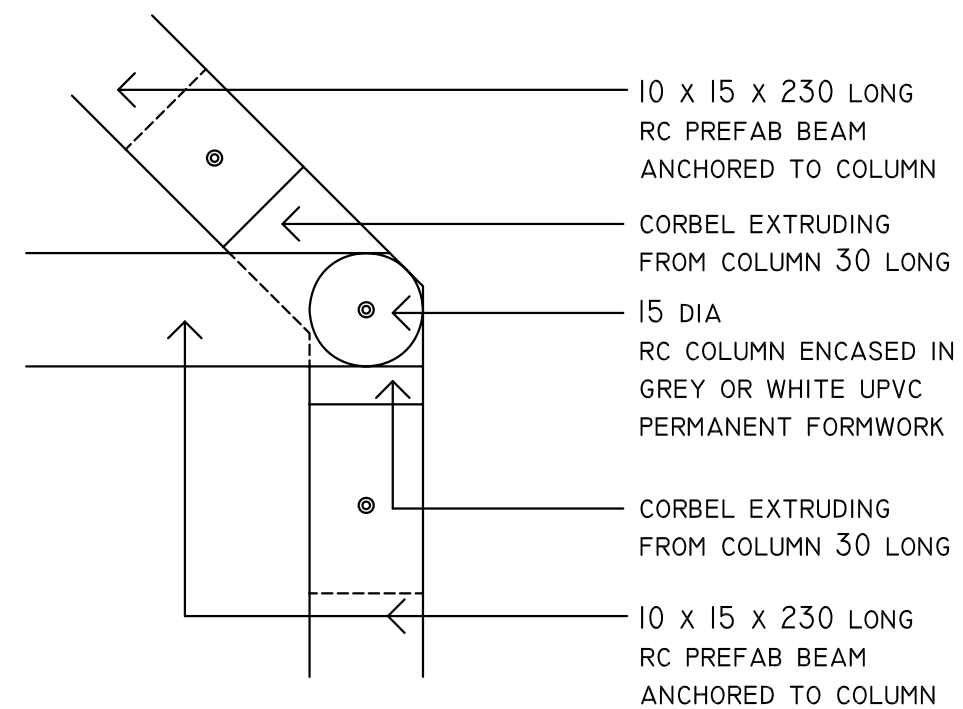
RC FOOTING DETAIL
BOARDWALKS B, C & PAVILION



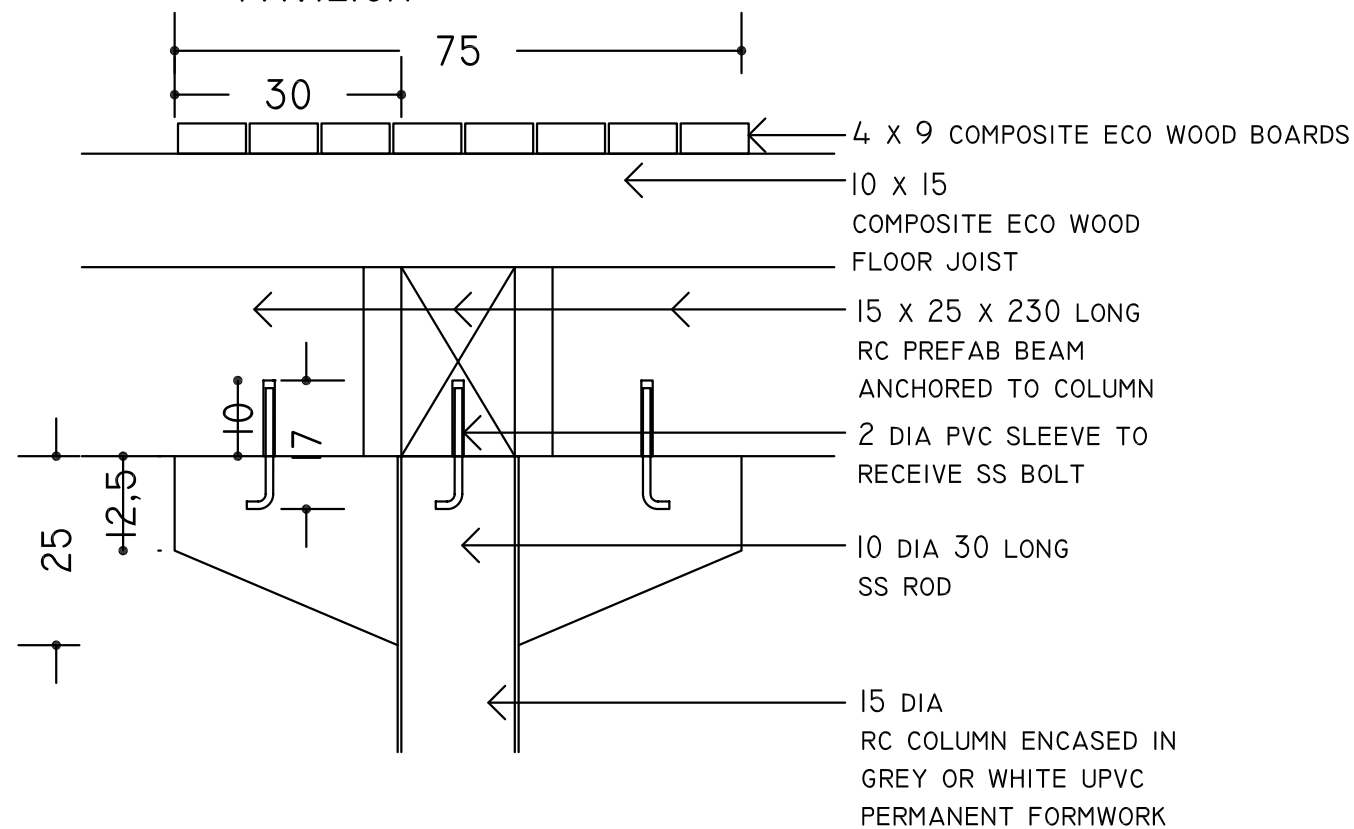
RC BEAM DETAIL
BOARDWALK B, C & PAVILION



COLUMN & BEAM CONNECTION DETAIL
PLAN INTERNAL JOINT
PAVILION



COLUMN & BEAM CONNECTION DETAIL
PLAN PERIPHERY JOINT
PAVILION



COLUMN & BEAM CONNECTION DETAIL
IN LONG SECTION
PAVILION

NOVEA ENGINEERING
PO Box 3013
Male
Maldives
m : +9609999413
e : fayaz@dhivehinet.net.mv

architect:

abel.

island life – eco-cultural consulting

assistant architect:

Aminath Abdulla

quantity surveyor:

Nasira Nasir

environmental consultant:

SANDCAYS PVT LTD

H. Alihuras, Lonuziyaariy Magu, Male', Maldives
t: +960 3307675
e: info@sandcays.com
www.sandcays.com

Sandcays

Client

Ministry of Environment & Energy

Project

Gn. Fuahmulah Eco-tourism Facilities

Facility

Boardwalk C

Drawing Title

Structural Concrete

Details

Pre-cast Column & Beams Connections

Scale :

1: 10

Date:

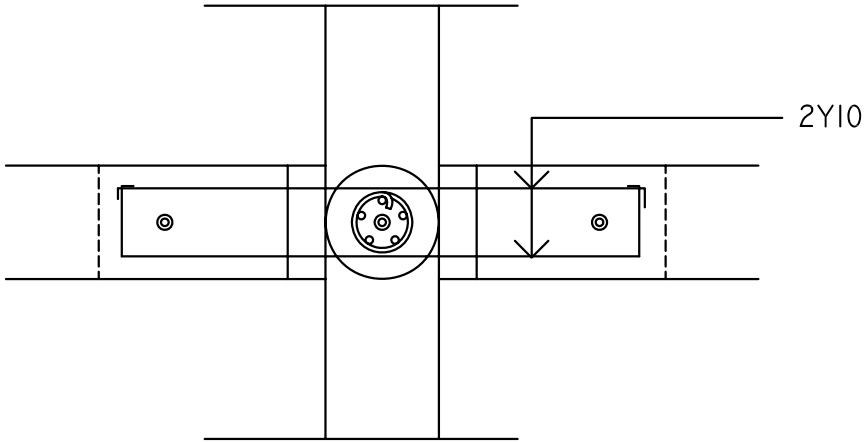
31 January 2017

Revisions

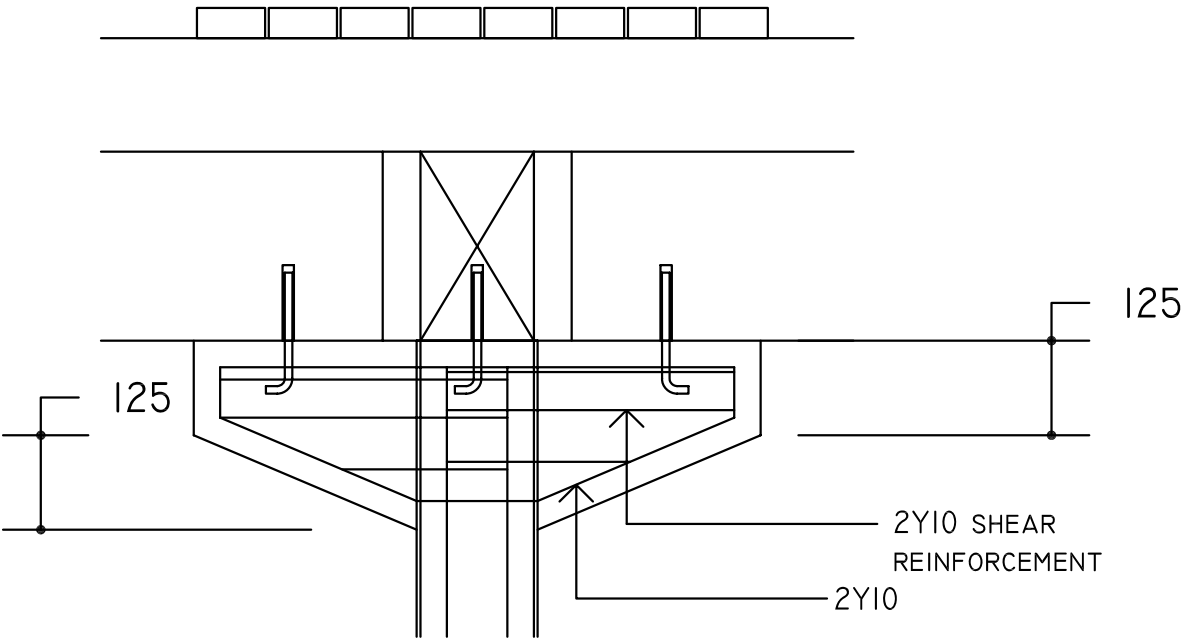
1

2

NOTE: ALL DESIGNS ABOVE ARE PROTECTED BY COPYRIGHT. NO PART SHOULD BE REPRODUCED (PHOTOCOPIED OR ANY OTHER MEANS) WITHOUT PERMISSION .



CORBEL REINFORCEMENT DETAIL
PLAN INTERNAL JOINT
PAVILION



CORBEL REINFORCEMENT DETAIL
IN LONG SECTION
PAVILION

NOVEA ENGINEERING
PO Box 3013
Male
Maldives
m : +9609999413
e : fayaz@dhivehinet.net.mv

architect:

abel.

island life – eco-cultural consulting

assistant architect:

Aminath Abdulla

quantity surveyor:

Nasira Nasir

environmental consultant:

SANDCAYS PVT LTD

H. Alihuras, Lonuziyaaraiy Magu, Male', Maldives
t: +960 3307675
e: info@sandcays.com
www.sandcays.com

Sandcays

Client

Ministry of Environment & Energy

Project

Gn. Fuahmulah Eco-tourism Facilities

Facility

Boardwalk C

Drawing Title

Structural Concrete

Details

Pre-cast Column & Beams Connections -
Corbels

Scale :

1: 10

Date:

31 January 2017

Revisions

1

2