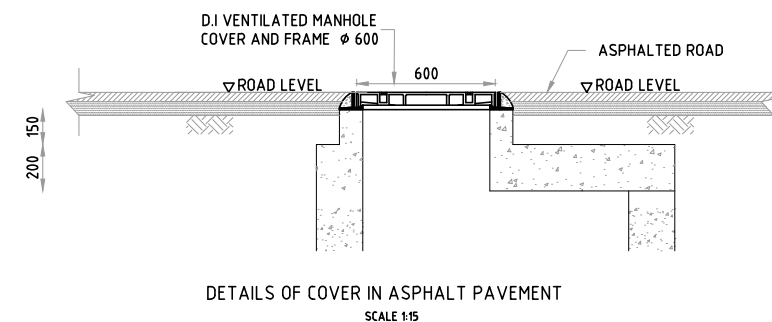
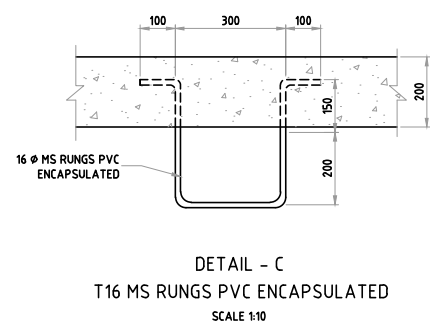
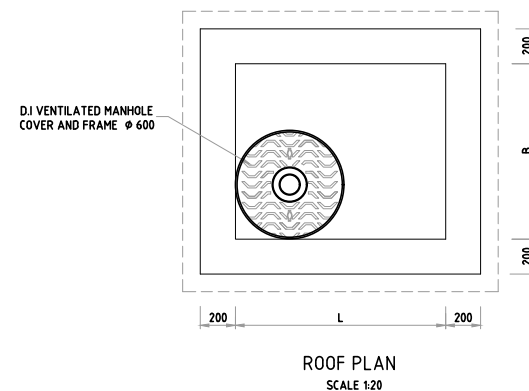
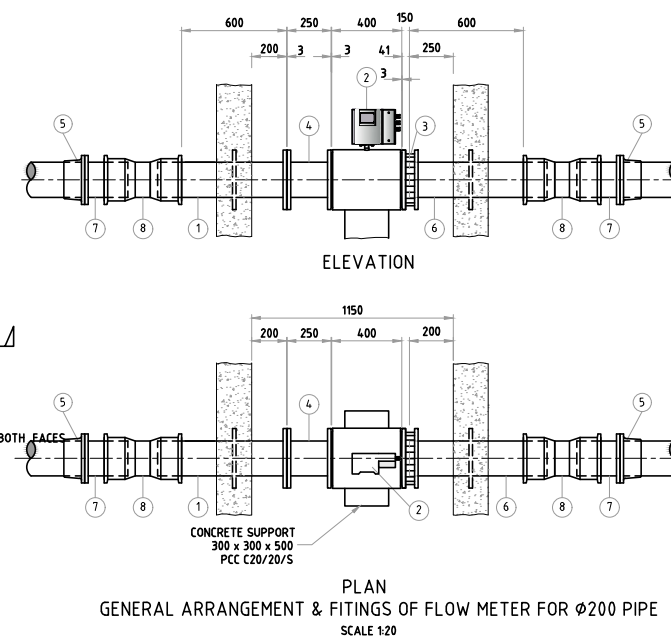
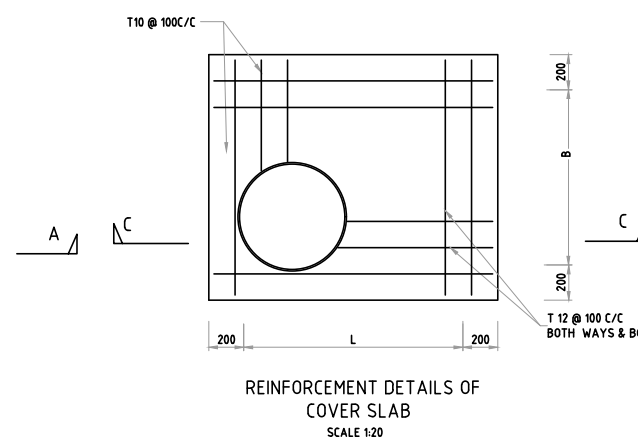
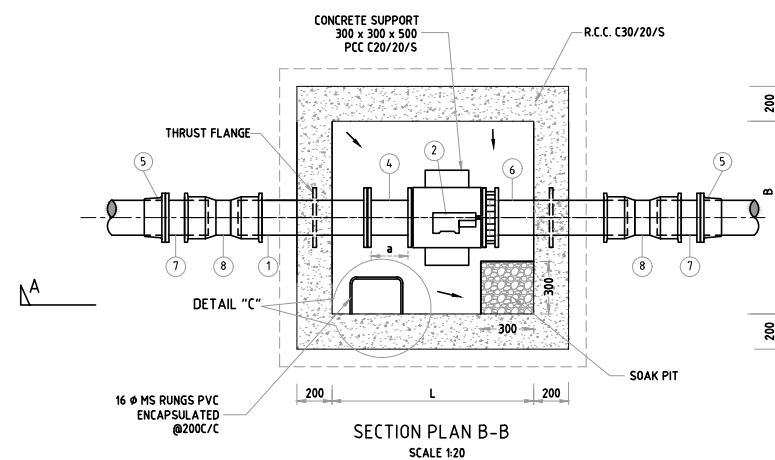


ITEM	SPECIALS AND FITTINGS	QTY
1	DI – SPIGOT PIPE WITH WELDED THRUST FLANGE	1
2	FLOW METER	1
3	FLANGED ADAPTOR	1
4	DI FLANGED-SPIGOT PIECE	1
5	DI/PE ADAPTOR	2
6	DI FLANGED SPIGOT PIPE WITH WELDED PUDDLE FLANGE	1
7	DI SHORT LENGTH FLANGED SPIGOT PIECE	2
8	DI COLLAR	2

Dia of Pipe (d)	L	B	a
80-200	1200	1200	250
250	1450	1250	425
300	1750	1300	650
350	2000	1350	875
400	2300	1400	1100
450	2500	1450	1325
500	2850	1500	1575






1. All dimensions are in mm
2. For location and depths of Gate valve chamber refer to drawings of pipeline plans and profiles.
3. The specials and pipe fittings shall be selected to suit the supply pipe line
4. All the valves , specials and pipes inside the chamber should be of Ductile iron
5. Flow meter shall comply with BS 5150
6. DI pipe & Fitting shall comply with BS 4772
7. Building materials:-
Description of building materials is as follows

$C\ 30 / 20 / S$
 Compressive strength of concrete Sulphate resistant cement
 maximum size of aggregate

8. Concrete:
 - a. mixes shall comply with BS 8110
 - b. minimum 28 day characteristic strength in accordance with BS 8110
9. Cover to reinforcement to be 50mm,
10. The steel used shall be of fy 350 grade.
11. The tanking shall be with two layers of Bituminous Paint for external surfaces of Valve chamber
12. Gate Valve Chamber to be provided for Pipe dia 200 to 300 mm
13. MH Cover Should Comply to BS EN 124 Class D400

ABBREVIATIONS

PIL - PIPE INVERT LEVEL.
MS - MILD STEEL.
DI - DUCTILE IRON.
PE - POLY ETHYLENE
RCC -REINFORCED CEMENT CONCRETE
PCC - PLAIN CEMENT CONCRETE

						TENDER PORT FOLIO								
						<div>CLIENT</div> <div> MINISTRY OF ENVIRONMENT AND ENERGY MALE' REPUBLIC OF MALDIVES</div>								
						<div>PROJECT</div> <div>PROVISION OF RAINWATER HARVESTING SYSTEM IN 8 ISLANDS</div>								
						<div>ASSIGNMENT</div> <div>CONSULTANCY SERVICES FOR DESIGN AND SUPERVISION OF RAINWATER HARVESTING SYSTEM IN GA. NILANDROO, GA. MAAMENDROO, GA. KONDY, GDH. NADILLA, GDH. HOADEHHOO, GDH. FIYOAL, GDH. RATHAFANDROO, GDH. FARESMATHODAA, MALDIVES [PACKAGE - 5]</div>								
No.	DESCRIPTION			BY	DATE	APPR								
REVISION							<div>DRAWING TITLE</div> <div>STANDARD DRAWING OF BULK FLOW METER CHAMBER</div>							
<div>CONSULTANT</div> <div> SHAH TECHNICAL CONSULTANTS PVT. LTD., INDIA IN ASSOCIATION WITH  DEVELOPMENT TECHNOLOGIES MALDIVES, MALDIVES</div>							APPROVED		CHECKED		DESIGNED		DRAWN	
							SSS		SSS		SPP		PDP	
							SCALE		DATE		DRAWING NUMBER		REVISION	
							AS SHOWN		FEB 2018		WS/STD/01		0	

UNIVERSITY OF