



Room Details & Finishes

Maldives-College of Medicine

Male, Maldives- 31 May 2018





Level 08-Plan

Level 08-Student Lounge
CLG-08-01



Level 08-Key-Plan



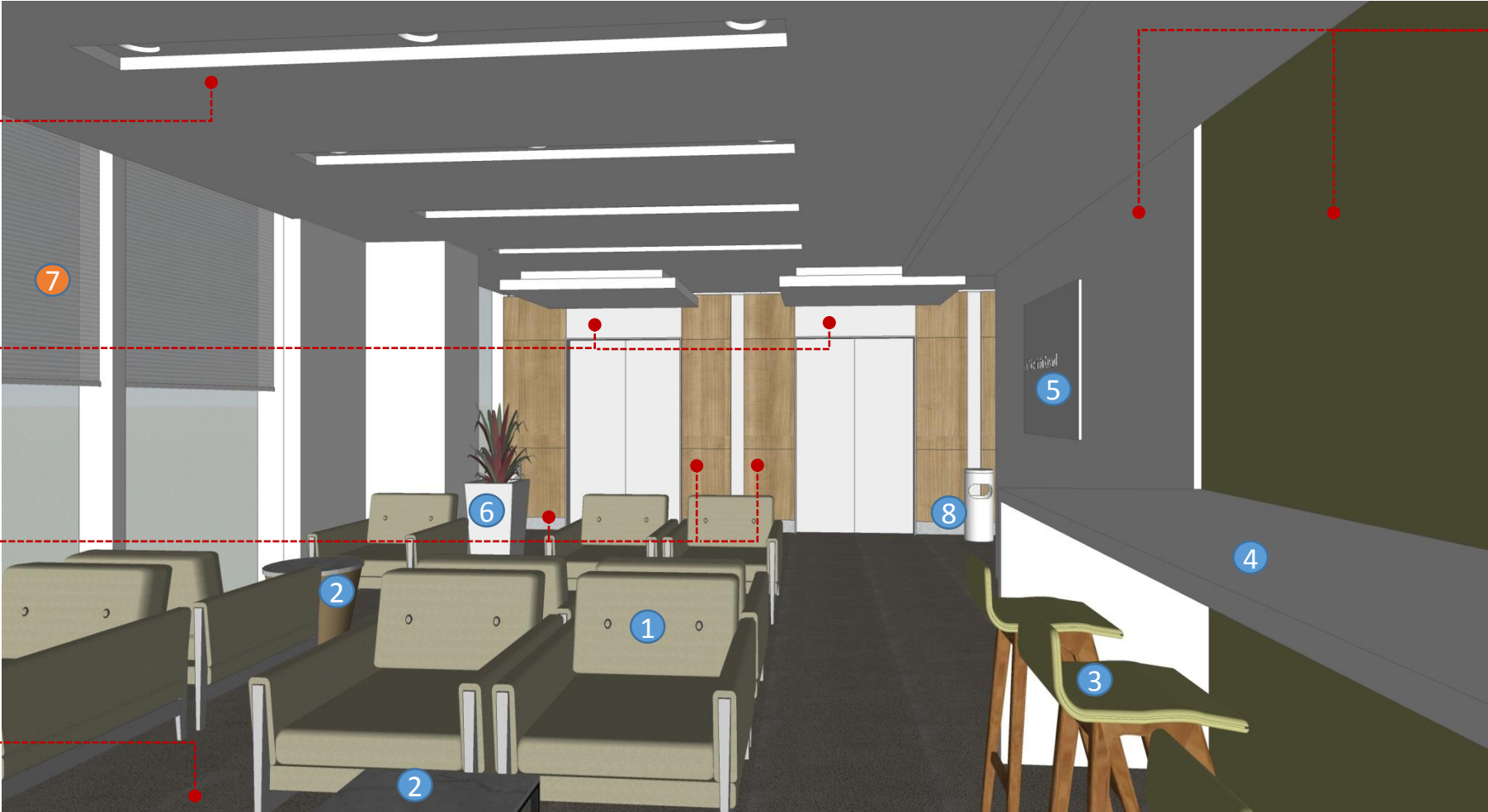
			ITEM CODE	GROUP	QTY
CLG-08-01	Student Lounge	1. Sofa: single seat	SOFA1	3	12
		2. Side Table-square	TBL-STs	3	2
		2. Side Table-round	TBL-STR	3	2
		3. Stool: Height Adjust	STL01	3	4
		4. Bench-Lounge	BCH-LNG	3	1
		5. Notice Board 1200mm	NB120	3	1
		Bin - Single Waste Bin	BIN01-Tall	3	2
		6. Potted Plant on the Floor	PLT-M	3	2
		7. Window Curtain	TRK-W	1	4

Legend:	
Group 0	Maldives National University (MNU) to Supply and Install
Group 1	Main Builder (Chang Hua) to Provide as part of D&B Works
Group 3	Specialist Vendor to Supply and Install
Group 4	IGMH Specialty Vendor to Supply for College of Medicine
Group 5	IGMH Specialty Vendor to Supply for Hospital

Level 08-Student Lounge
CLG-08-01



Level 08-Key-Plan



Gypsum Plaster board Ceiling
(by Chang Hua)

6mm thk. Bronze mirror
w/ plywood backing &
SS-insert between HPL and
mirror
(by Chang Hua/Falcon)

HPL Wooden Laminate wall
with 100mm SS-skirting
(by Chang Hua/Falcon)

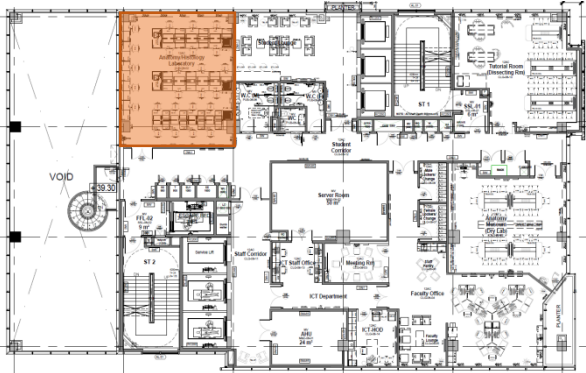
Floor Tiles as per current
provision
(by Chang Hua)

PT-01 Painted wall
(by Chang Hua)

			ITEM CODE	GROUP	QTY
CLG-08-01	Student Lounge	1. Sofa: single seat	SOFA1	3	12
		2. Side Table-square	TBL-STs	3	2
		2. Side Table-round	TBL-STR	3	2
		3. Stool: Height Adjust	STL01	3	4
		4. Bench-Lounge	BCH-LNG	3	1
		5. Notice Board 1200mm	NB120	3	1
		Bin - Single Waste Bin	BIN01-Tall	3	2
		6. Potted Plant on the Floor	PLT-M	3	2
		7. Window Curtain	TRK-W	1	4

Legend:	
Group 0	Maldives National University (MNU) to Supply and Install
Group 1	Main Builder (Chang Hua) to Provide as part of D&B Works
Group 3	Specialist Vendor to Supply and Install
Group 4	IGMH Specialty Vendor to Supply for College of Medicine
Group 5	IGMH Specialty Vendor to Supply for Hospital

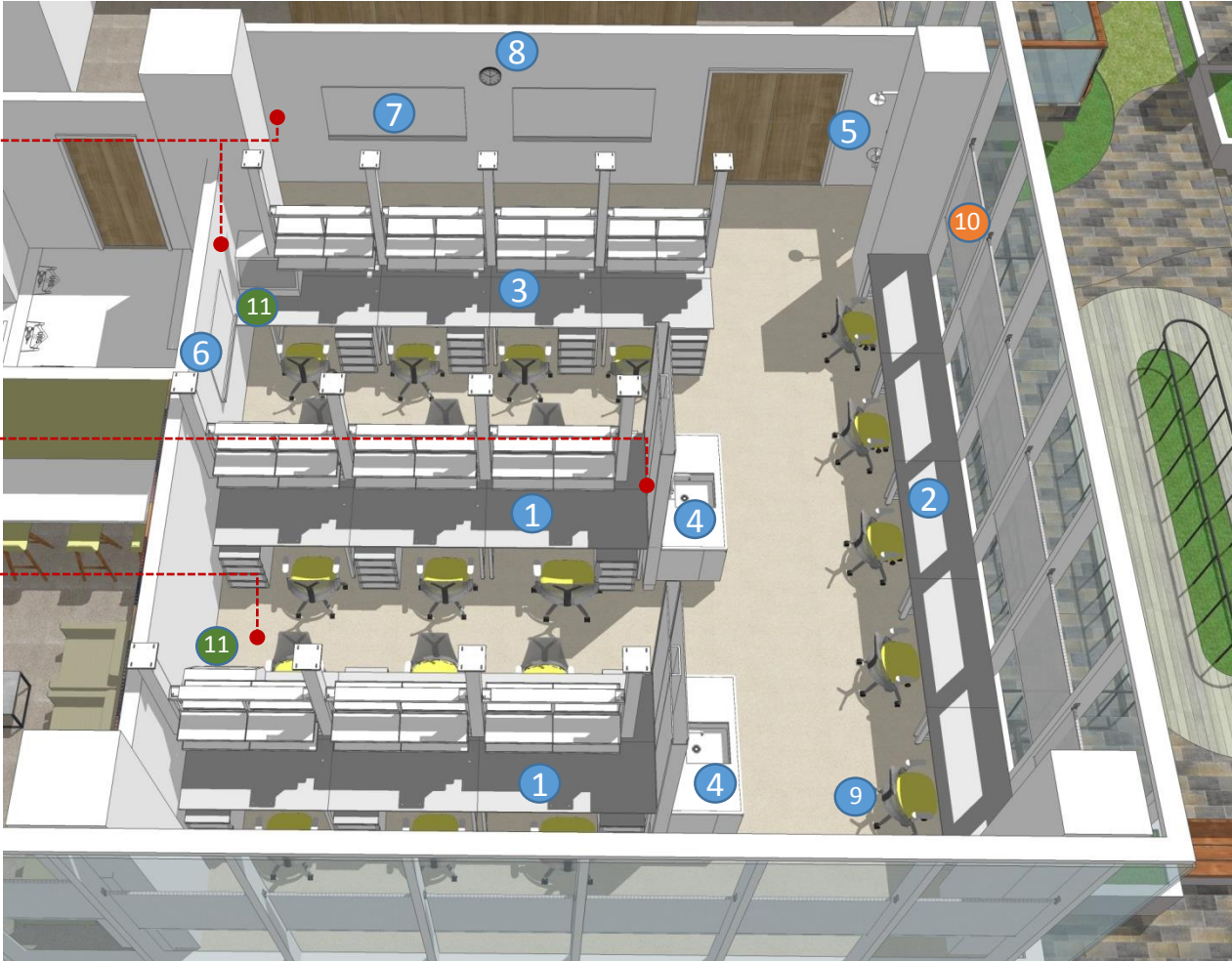
Level 08-Anatomy Histology/Laboratory
CLG-08-02



Level 08-Key-Plan

Painted wall
(by Chang Hua)

V1-Vinyl Flooring
(by Chang Hua)



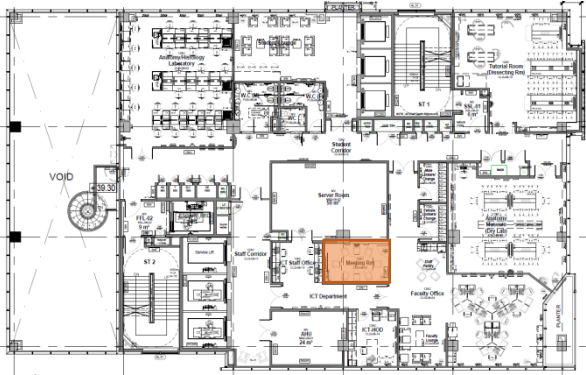
Tegular Mineral Fiber board
With Gypsum plasterboard
Perimeter bulkhead
(by Chang Hua)



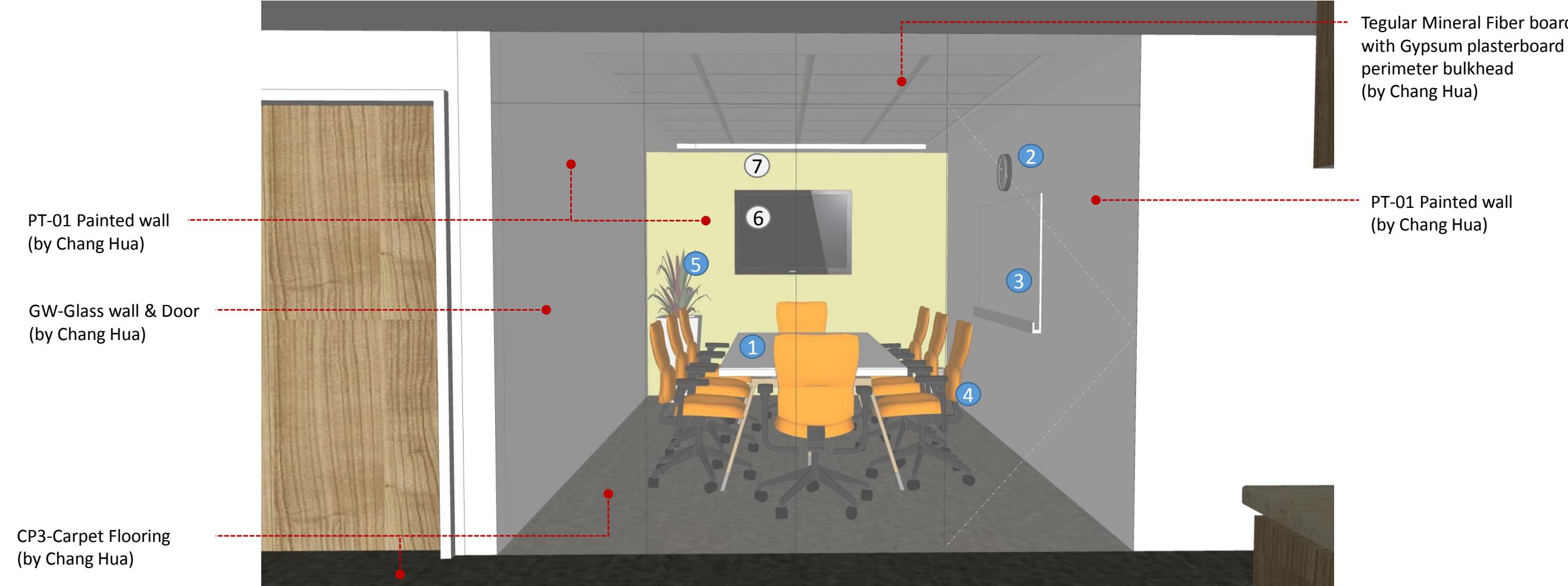
			ITEM CODE	GROUP	QTY
CLG-08-02	Anatomy/Histology Laboratory	1. Lab Bench 1800mm with overhead shelving and Mobile Pedestal	ILB18	3	12
		2. Lab Bench 1500mm with Mobile Pedestal	ILB15	3	5
		3. Lab Bench 1350mm with overhead shelving and Mobile Pedestal	ILB135	3	8
		4. Laboratory Sink with Hands Free Tap and Emergency Eye Wash	LS15	3	2
		5. Emergency Eye Wash	EMER-SHO	3	1
		6. White board 1200mm x 900mm	WB120	3	1
		7. White board 1800mm x 900mm	WB180	3	2
		8. Clock	CLK1	3	1
		9. Stool: Height adjust with back rest	STL02	3	25
		Personal Protective Equipment	PPE	3	1
		Alcohol Dispenser	DA	3	1
		Hook 02	HK02	3	4
		10. Window Curtain	TRK-W	1	10
		11. Fume Hood	FUMH	0	3

Legend:	
Group 0	Maldives National University (MNU) to Supply and Install
Group 1	Main Builder (Chang Hua) to Provide as part of D&B Works
Group 3	Specialist Vendor to Supply and Install
Group 4	IGMH Specialty Vendor to Supply for College of Medicine
Group 5	IGMH Specialty Vendor to Supply for Hospital

Level 08-Meeting Room
CLG-08-03



Level 08-Key-Plan



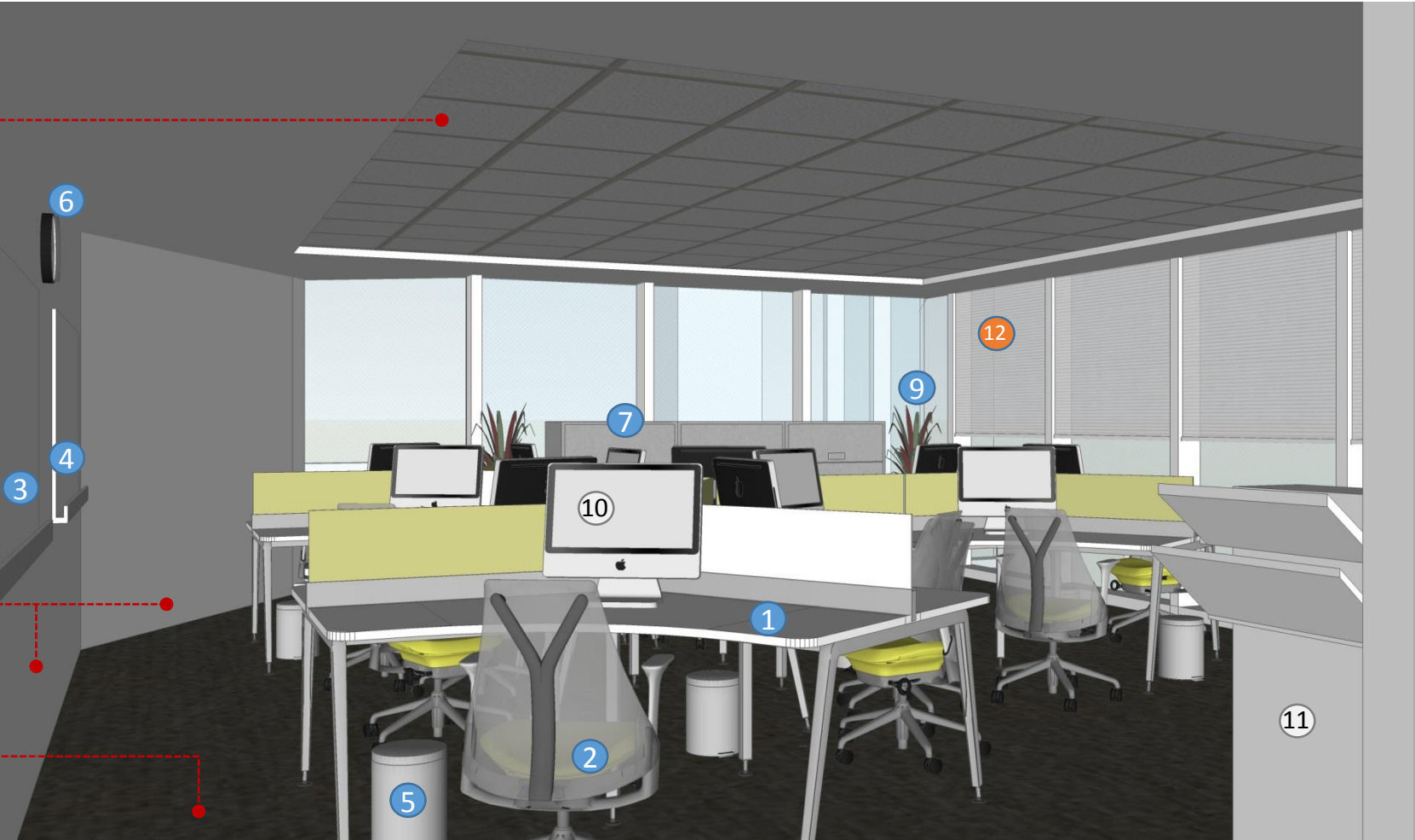
			ITEM CODE	GROUP	QTY
CLG-08-03	Meeting Room	1. Conference Table 8 people (to c/w 8 x CHR-LB)	TBL8C	3	1
		2. Clock	CLK1	3	1
		3. White board 1800mm x 900mm	WB180	3	1
		4. Bin - Single Waste Bin	BIN01	3	1
		5. Potted Plant on the Floor	PLT-M	3	1
		6. TV-50 Inch	TV50	4	1
		7. Pull down screen	PDS	4	1

Legend:	
Group 0	Maldives National University (MNU) to Supply and Install
Group 1	Main Builder (Chang Hua) to Provide as part of D&B Works
Group 3	Specialist Vendor to Suppy and Install
Group 4	IGMH Specialty Vendor to Supply for College of Medicine
Group 5	IGMH Specialty Vendor to Supply for Hospital

Level 08-Faculty Office
CLG-08-04



Level 08-Key-Plan



Tegular Mineral Fiber board
with Gypsum plasterboard
perimeter bulkhead
(by Chang Hua)

PT-01 Painted wall
(by Chang Hua)

CP3-Carpet Flooring
(by Chang Hua)

			ITEM CODE	GROUP	QTY
CLG-08-04	Faculty Office	1. Work Station-120 deg-cluster with mobile pedestal	WA07	3	12
		2. Chair: Low back staff chair	CHR-LB	3	12
		3. Notice Board 1200mm	NB120	3	2
		4. White board 1800mm x 900mm	WB180	3	1
		5. Bin - Single Waste Bin	BIN01	3	9
		6. Clock	CLK1	3	1
		7. Cabinet - Low Height	FC4DL	3	3
		8. Cabinet - Filing 4 Drawer	FC4D	3	2
		9. Potted Plant on the Floor	PLT-M	3	2
		10. Computer	CPU	4	12
		11. Printer: Large	PRT-L	4	1
		12. Window Curtain	TRK-W	1	5

Legend:

Group 0	Maldives National University (MNU) to Supply and Install
Group 1	Main Builder (Chang Hua) to Provide as part of D&B Works
Group 3	Specialist Vendor to Supply and Install
Group 4	IGMH Specialty Vendor to Supply for College of Medicine
Group 5	IGMH Specialty Vendor to Supply for Hospital

Level 08-Faculty Office
CLG-08-04



Level 08-Key-Plan



Tegular Mineral Fiber board
with Gypsum plasterboard
perimeter bulkhead
(by Chang Hua)

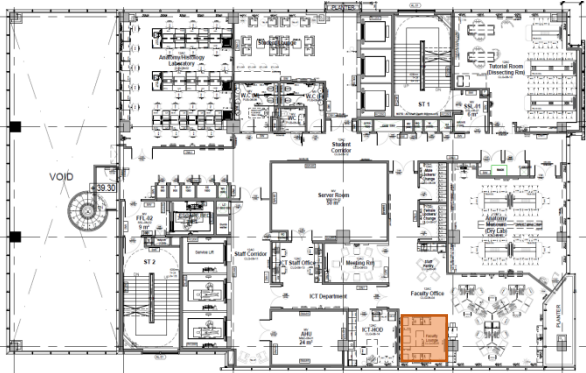
PT-01 Painted wall
(by Chang Hua)

CP3-Carpet Flooring
(by Chang Hua)

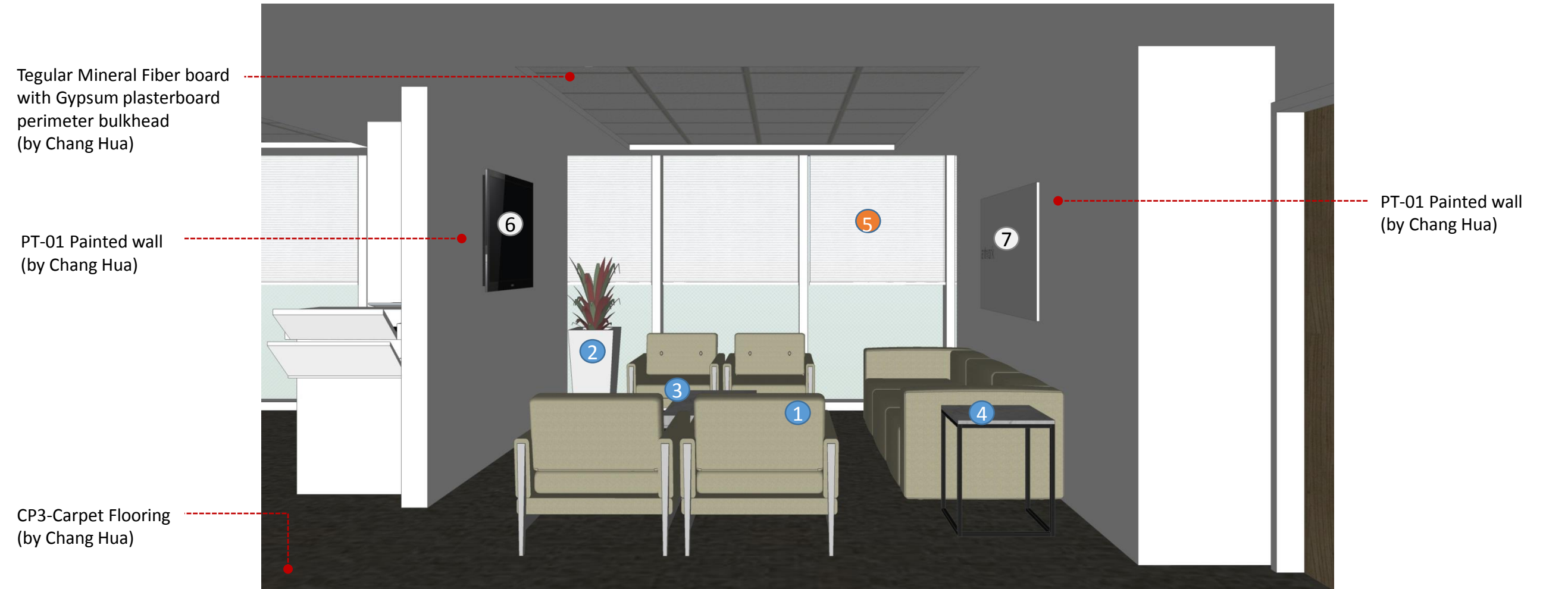
			ITEM CODE	GROUP	QTY
CLG-08-04	Faculty Office	1. Work Station-120 deg-cluster with mobile pedestal	WA07	3	12
		2. Chair: Low back staff chair	CHR-LB	3	12
		3. Notice Board 1200mm	NB120	3	2
		4. White board 1800mm x 900mm	WB180	3	1
		5. Bin - Single Waste Bin	BIN01	3	9
		6. Clock	CLK1	3	1
		7. Cabinet - Low Height	FC4DL	3	3
		8. Cabinet - Filing 4 Drawer	FC4D	3	2
		9. Potted Plant on the Floor	PLT-M	3	2
		10. Computer	CPU	4	12
		11. Printer: Large	PRT-L	4	1
		12. Window Curtain	TRK-W	1	5

Legend:	
Group 0	Maldives National University (MNU) to Supply and Install
Group 1	Main Builder (Chang Hua) to Provide as part of D&B Works
Group 3	Specialist Vendor to Supply and Install
Group 4	IGMH Specialty Vendor to Supply for College of Medicine
Group 5	IGMH Specialty Vendor to Supply for Hospital

Level 08-Faculty Lounge
CLG-08-05



Level 08-Key-Plan



		ITEM CODE GROUP QTY			
CLG-08-05	Faculty Lounge	1. Sofa: single seat	SOFA1	3	7
		2. Potted Plant on the Floor	PLT-M	3	1
		3. Table- coffee table	TBL-CT	3	1
		4. Side Table	TBL-ST	3	2
		5. Window Curtain	TRK-W	1	2
		6. TV-50 Inch	TV50	4	1
		7. Artwork	AW-90X160	4	1

Legend:

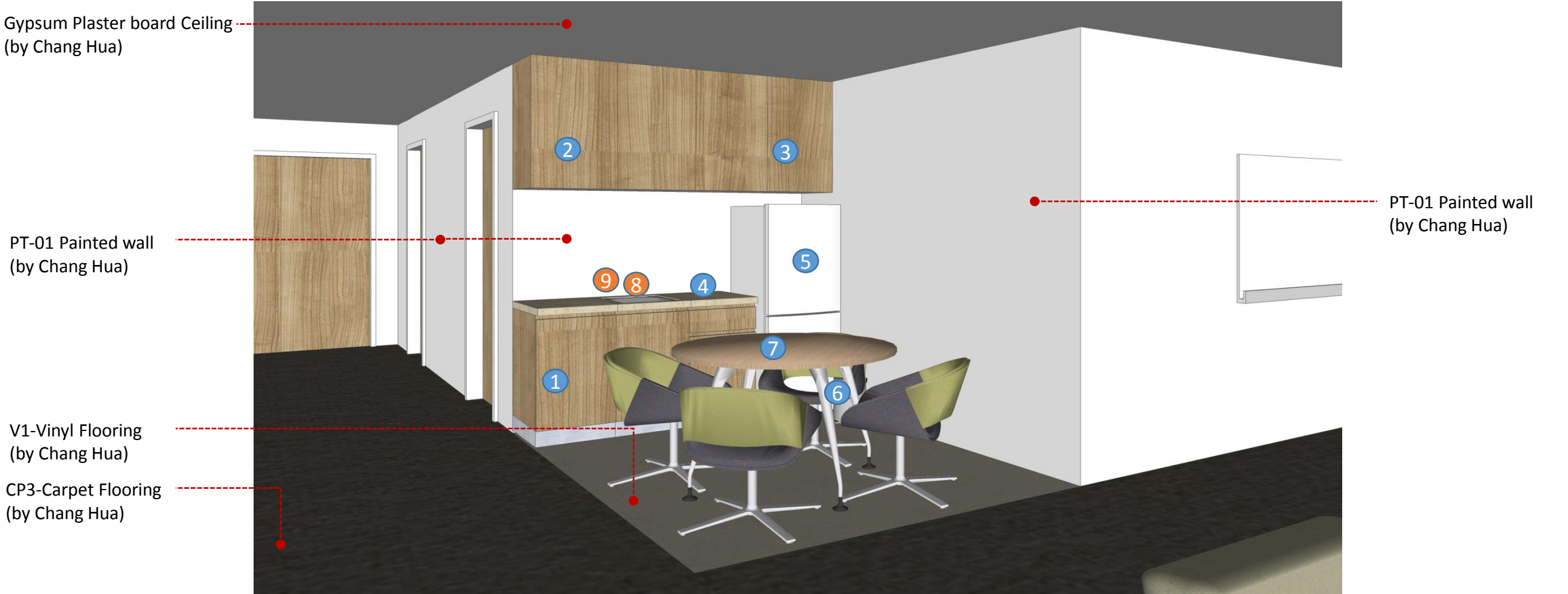
Group 0	Maldives National University (MNU) to Supply and Install
Group 1	Main Builder (Chang Hua) to Provide as part of D&B Works
Group 3	Specialist Vendor to Supply and Install
Group 4	IGMH Specialty Vendor to Supply for College of Medicine
Group 5	IGMH Specialty Vendor to Supply for Hospital

Level 08-Staff Pantry

CLG-08-06



Level 08-Key-Plan



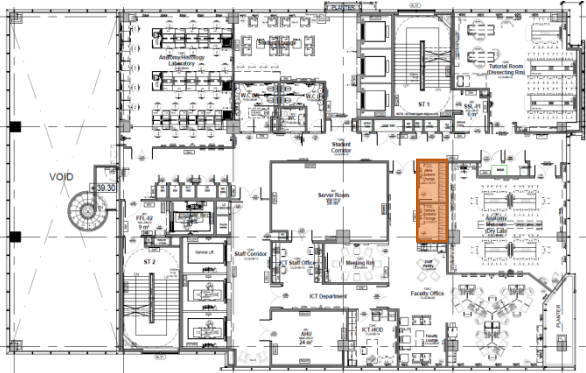
		ITEM CODE	GROUP	QTY
CLG-08-06	Staff Pantry	1. Underbench Cabinet 500mm module	BU5C	3
		2. Overhead Cabinet 500mm module w 3 ledges	CU53L	3
		3. Overhead Cabinet 600mm module w 3 ledges	CU63L	1
		4. Bench Counter Top	BCH	1
		5. Refrigerator 800mm by 600mm	REF	1
		6. Bin - Single Waste Bin	BIN01	1
		7. Conference Table 4 Seater (Round) to c/w 4 CHR-LB	TBL4CR	1
		8. Sink: Stainless Steel Single 300mm Deep	SNK-K	1
		9. Tap	TP02	1

Legend:

Group 0	Maldives National University (MNU) to Supply and Install
Group 1	Main Builder (Chang Hua) to Provide as part of D&B Works
Group 3	Specialist Vendor to Supply and Install
Group 4	IGMH Specialty Vendor to Supply for College of Medicine
Group 5	IGMH Specialty Vendor to Supply for Hospital

Level 08-Staff Lockers

CLG-08-07 & 08

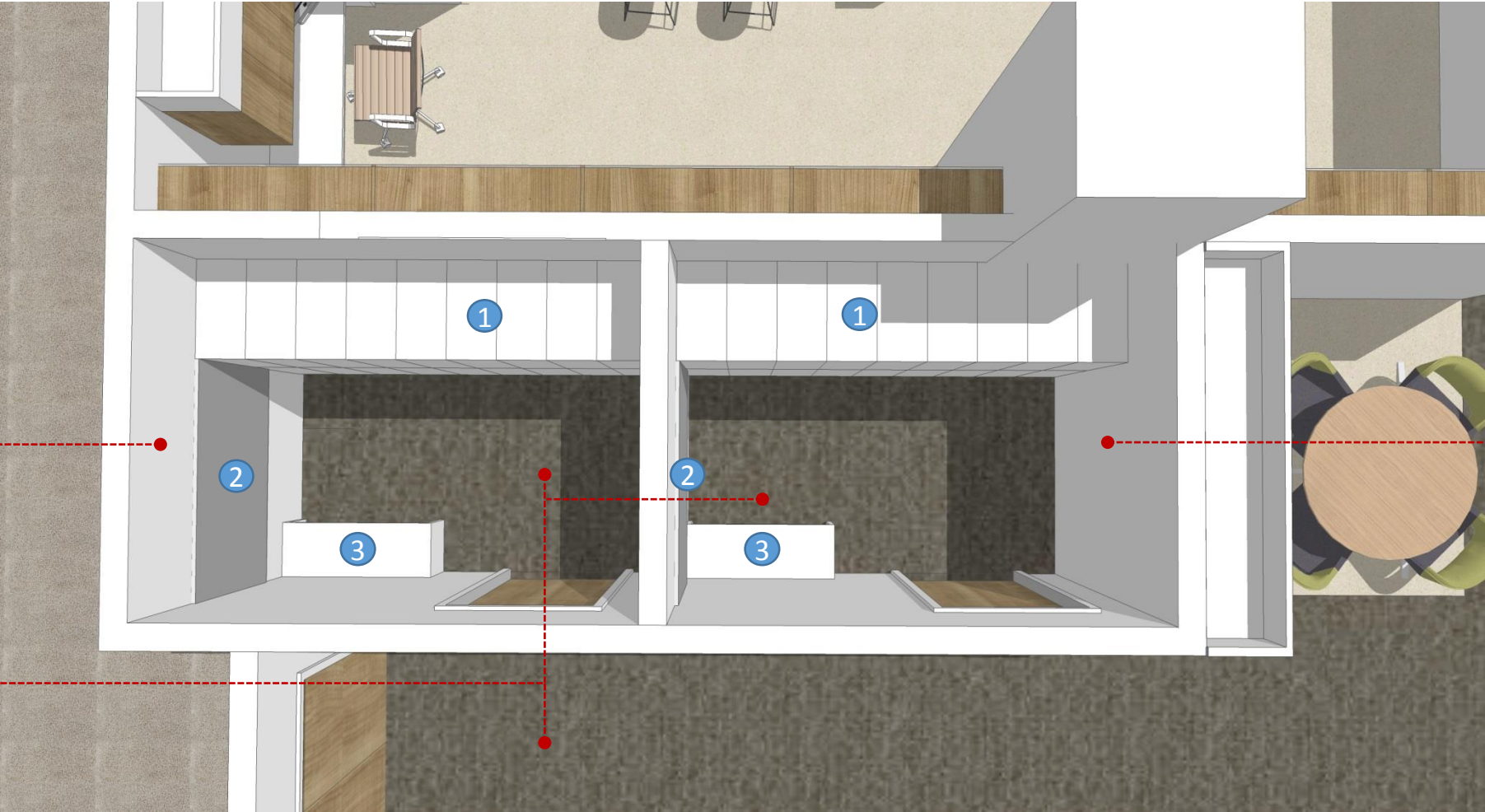


Level 08-Key-Plan

*Gypsum Plaster board Ceiling
(by Chang Hua)

PT-01 Painted wall
(by Chang Hua)

CP3-Carpet Flooring
(by Chang Hua)



PT-01 Painted wall
(by Chang Hua)

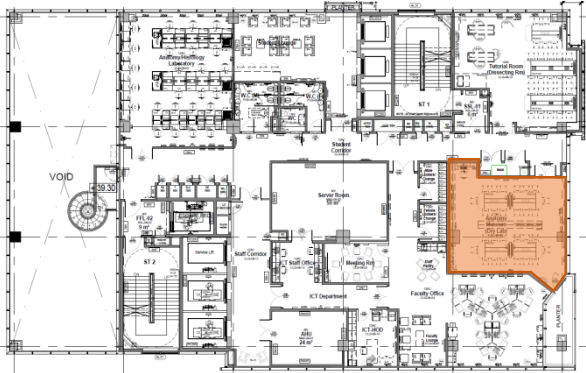
			ITEM CODE	GROUP	QTY
CLG-08-07	Female Staff Locker/Changing	Hook 02	HK02	3	2
		1. Locker - Half Height	LCK02	3	9
		2. Mirror Wall to Wall	MRR-W	3	1
		3. Sitting bench	BNCH	3	1
CLG-08-08	Female Staff Locker/Changing	Hook 02	HK02	3	2
		1. Locker - Half Height	LCK02	3	9
		2. Mirror Wall to Wall	MRR-W	3	1
		3. Sitting bench	BNCH	3	1

Legend:

Group 0	Maldives National University (MNU) to Supply and Install
Group 1	Main Builder (Chang Hua) to Provide as part of D&B Works
Group 3	Specialist Vendor to Supply and Install
Group 4	IGMH Specialty Vendor to Supply for College of Medicine
Group 5	IGMH Specialty Vendor to Supply for Hospital

Level 08-Anatomy Museum (Dry Lab)

CLG-08-09

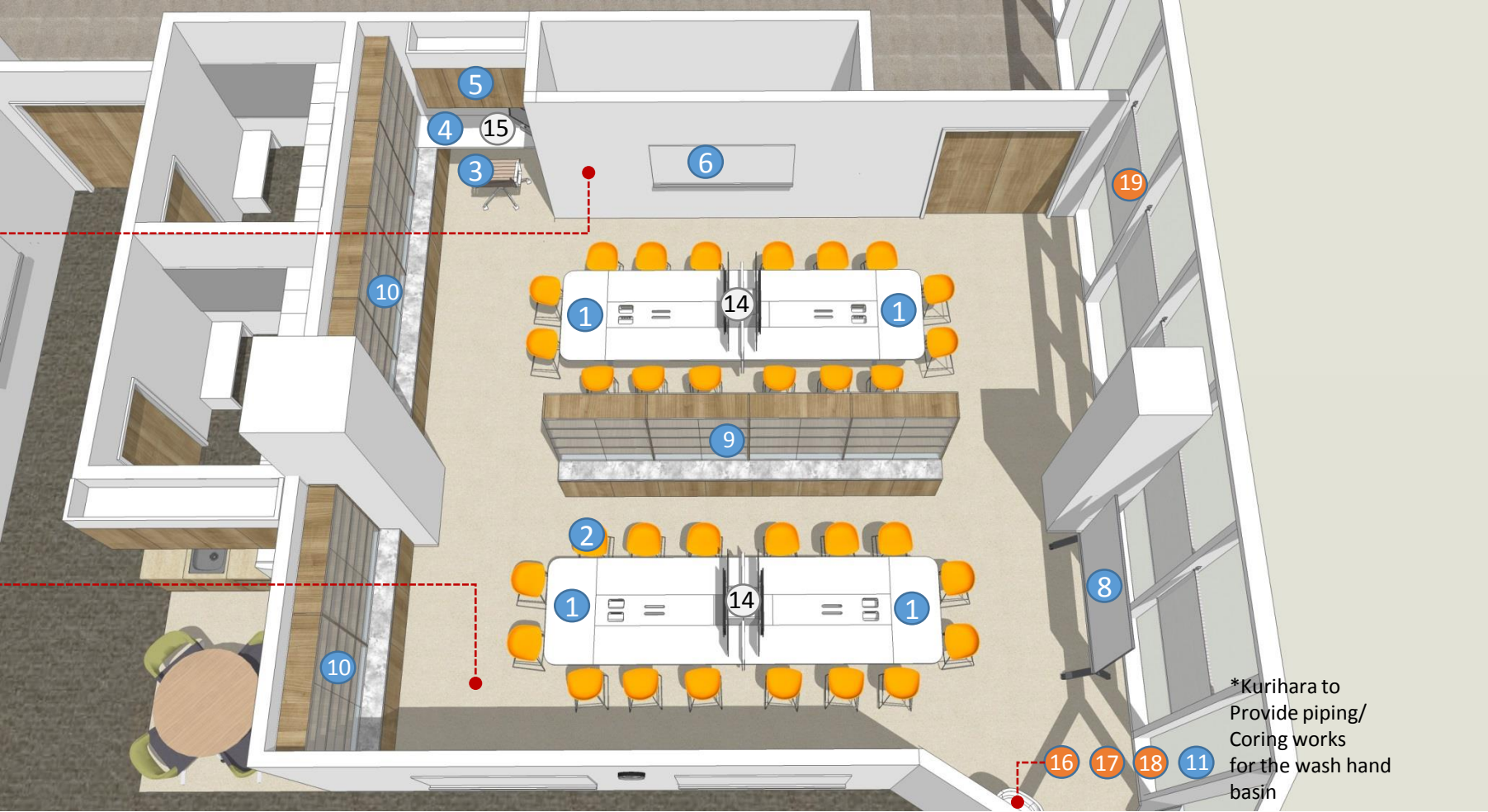


Level 08-Key-Plan

*Tegular Mineral Fiber board with Gypsum plasterboard perimeter bulkhead for ceiling (by Chang Hua)

PT-01 Painted wall (by Chang Hua)

V1-Vinyl Flooring (by Chang Hua)



*Kurihara to Provide piping/ Coring works for the wash hand basin

			ITEM CODE	GROUP	QTY
CLG-08-09	Anatomy Museum (Dry Lab)	1. Collaboration Table -6 Seater with adjustable height TV and built-in sockets	TBL6-COL	3	4
		2. Stacking Chair	CHRS	3	28
		3. Stool: Height adjust with back rest	STL02	3	1
		4. Bench Counter Top	BCH	3	1
		5. Overhead Cabinet 500mm module w 3 ledges	CU53L	3	3
		6. White board 1800mm x 900mm	WB180	3	1
		7. Notice Board 1800mm	NB180	3	1
		8. Movable White board 1800mm x 900mm	WB-MOV	3	1
		9. Convertible Display Cabinet & Glass writing board (back to back)	ANAT-B	3	1
		10. Convertible Display Cabinet & Glass writing board (one sided)	ANAT-S	3	2
		11. Bin - Single Waste Bin	BIN01	3	1
		12. Hook 02	HK02	3	4
		13. Clock	CLK1	3	1
		14. TV-50 Inch	TV50	4	4
		15. Computer	CPU	4	1
		16. Hand wash basin: half pedestal w/ metered faucet	HW01	1	1
		17. Dispenser – Soap	DS	1	1
		18. Dispenser - Toilet Paper	DT	1	1
		19. Window Curtain	TRK-W	1	6

Legend:	
Group 0	Maldives National University (MNU) to Supply and Install
Group 1	Main Builder (Chang Hua) to Provide as part of D&B Works
Group 3	Specialist Vendor to Supply and Install
Group 4	IGMH Specialty Vendor to Supply for College of Medicine
Group 5	IGMH Specialty Vendor to Supply for Hospital

Level 08-Anatomy Museum (Dry Lab)

CLG-08-09



Level 08-Key-Plan

Tegular Mineral Fiber board with Gypsum plasterboard perimeter bulkhead (by Chang Hua)



PT-01 Painted wall (by Chang Hua)

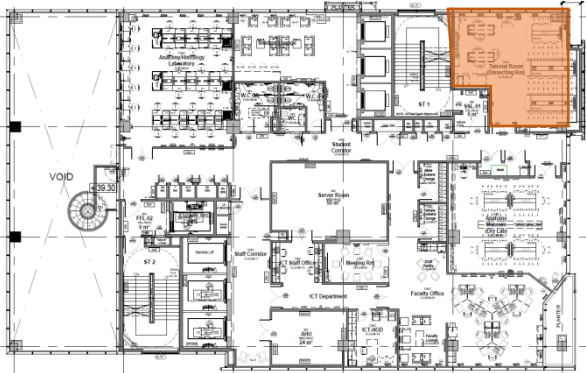
V1-Vinyl Flooring (by Chang Hua)

			ITEM CODE	GROUP	QTY
CLG-08-09	Anatomy Museum (Dry Lab)	1. Collaboration Table -6 Seater with adjustable height TV and built-in sockets	TBL6-COL	3	4
		2. Stacking Chair	CHRS	3	28
		3. Stool: Height adjust with back rest	STL02	3	1
		4. Bench Counter Top	BCH	3	1
		5. Overhead Cabinet 500mm module w 3 ledges	CU53L	3	3
		6. White board 1800mm x 900mm	WB180	3	1
		7. Notice Board 1800mm	NB180	3	1
		8. Movable White board 1800mm x 900mm	WB-MOV	3	1
		9. Convertible Display Cabinet & Glass writing board (back to back)	ANAT-B	3	1
		10. Convertible Display Cabinet & Glass writing board (one sided)	ANAT-S	3	2
		11. Bin - Single Waste Bin	BIN01	3	1
		12. Hook 02	HK02	3	4
		13. Clock	CLK1	3	1
		14. TV-50 Inch	TV50	4	4
		15. Computer	CPU	4	1
		16. Hand wash basin: half pedestal w/ metered faucet	HW01	1	1
		17. Dispenser – Soap	DS	1	1
		18. Dispenser - Toilet Paper	DT	1	1
		19. Window Curtain	TRK-W	1	6

Legend:	
Group 0	Maldives National University (MNU) to Supply and Install
Group 1	Main Builder (Chang Hua) to Provide as part of D&B Works
Group 3	Specialist Vendor to Supply and Install
Group 4	IGMH Specialty Vendor to Supply for College of Medicine
Group 5	IGMH Specialty Vendor to Supply for Hospital

Level 08-Tutorial Rm (Dissecting Rm)

CLG-08-10



Level 08-Key-Plan

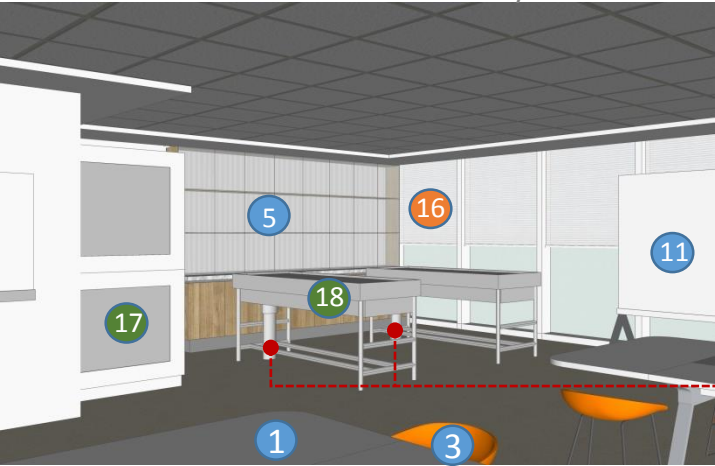
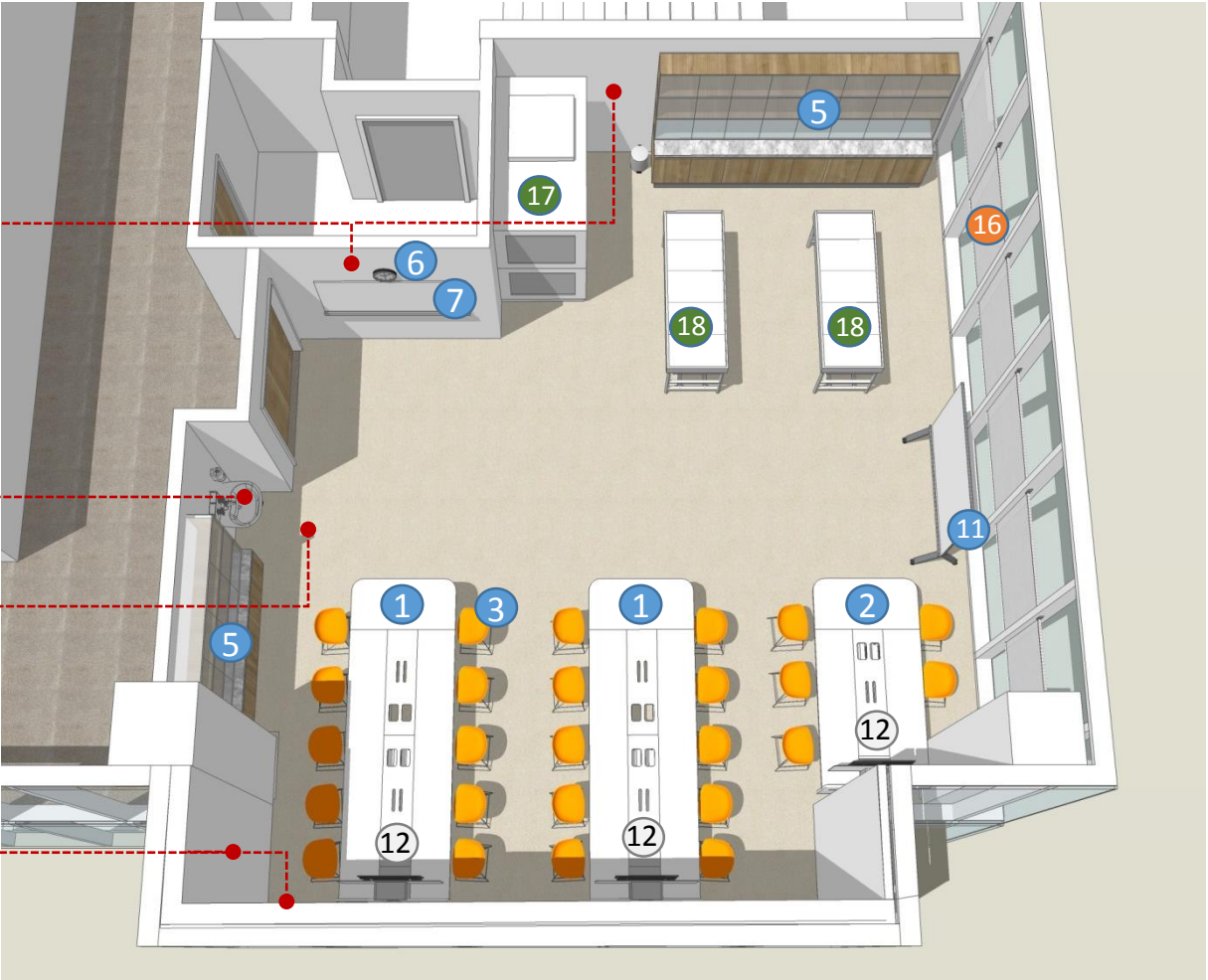
*Tegular Mineral Fiber board with Gypsum plasterboard perimeter bulkhead for ceiling (by Chang Hua)

PT-01 Painted wall (by Chang Hua)

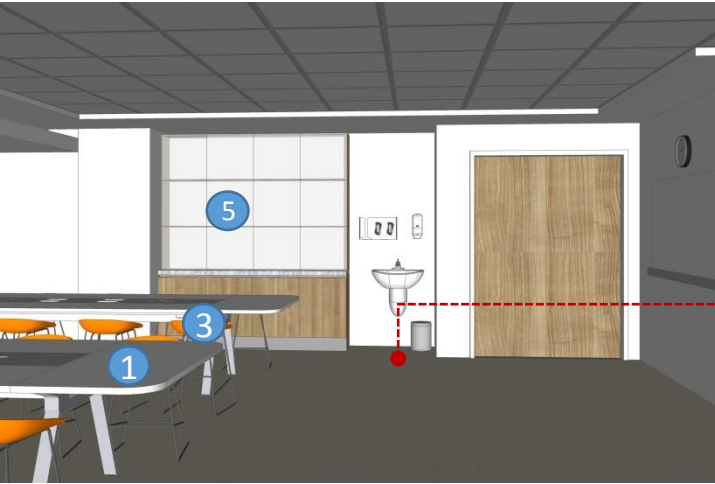
4 8 9 15 14 13

V1-Vinyl Flooring (by Chang Hua)

PT-01 Painted wall (by Chang Hua)



Kurihara to Provide piping/ Coring works for the dissecting table



Kurihara to Provide piping/ Coring works for the wash hand basin

			ITEM CODE	GROUP	QTY
CLG-08-10	Tutorial Room (Disecting Room)	1. Collaboration Table -10 Seater with adjustable height TV and built-in sockets	TBL10-COL	3	2
		2. Collaboration Table -6 Seater with adjustable height TV and built-in sockets	TBL6-COL	3	1
		3. Stacking Chair	CHRS	3	25
		4. Bin - Single Waste Bin	BIN01	3	1
		5. Convertible Display Cabinet & Glass writing board (one sided)	ANAT-SN	3	2
		6. Clock	CLK1	3	1
		7. Notice Board 1800mm	NB180	3	1
		8. Personal Protective Equipment	PPE	3	1
		9. Alcohol Dispenser	DA	3	1
		10. Hook 02	HK02	3	4
		11. Movable White board 1800mm x 900mm	WB-MOV	3	1
		12. TV-50 Inch	TV50	4	3
		13. Hand wash basin: half pedestal w/ metered faucet	HW01	1	1
		14. Dispenser – Soap	DS	1	1
		15. Dispenser - Toilet Paper	DT	1	1
		16. Window Curtain	TRK-W	1	6
		17. Body Cooler for 2 Corpses	BODCOL2	0	1
		18. Disecting Table	DISC-TBL	0	2

Legend:	
Group 0	Maldives National University (MNU) to Supply and Install
Group 1	Main Builder (Chang Hua) to Provide as part of D&B Works
Group 3	Specialist Vendor to Supply and Install
Group 4	IGMH Specialty Vendor to Supply for College of Medicine
Group 5	IGMH Specialty Vendor to Supply for Hospital

Level 08- Corridors
CLG-08-11 & 12

Tegular Mineral Fiber board
with Gypsum plasterboard
perimeter bulkhead
(by Chang Hua)

HPL Wooden
laminate walls and
concealed M&E
doors (by Chang
Hua/Falcon)

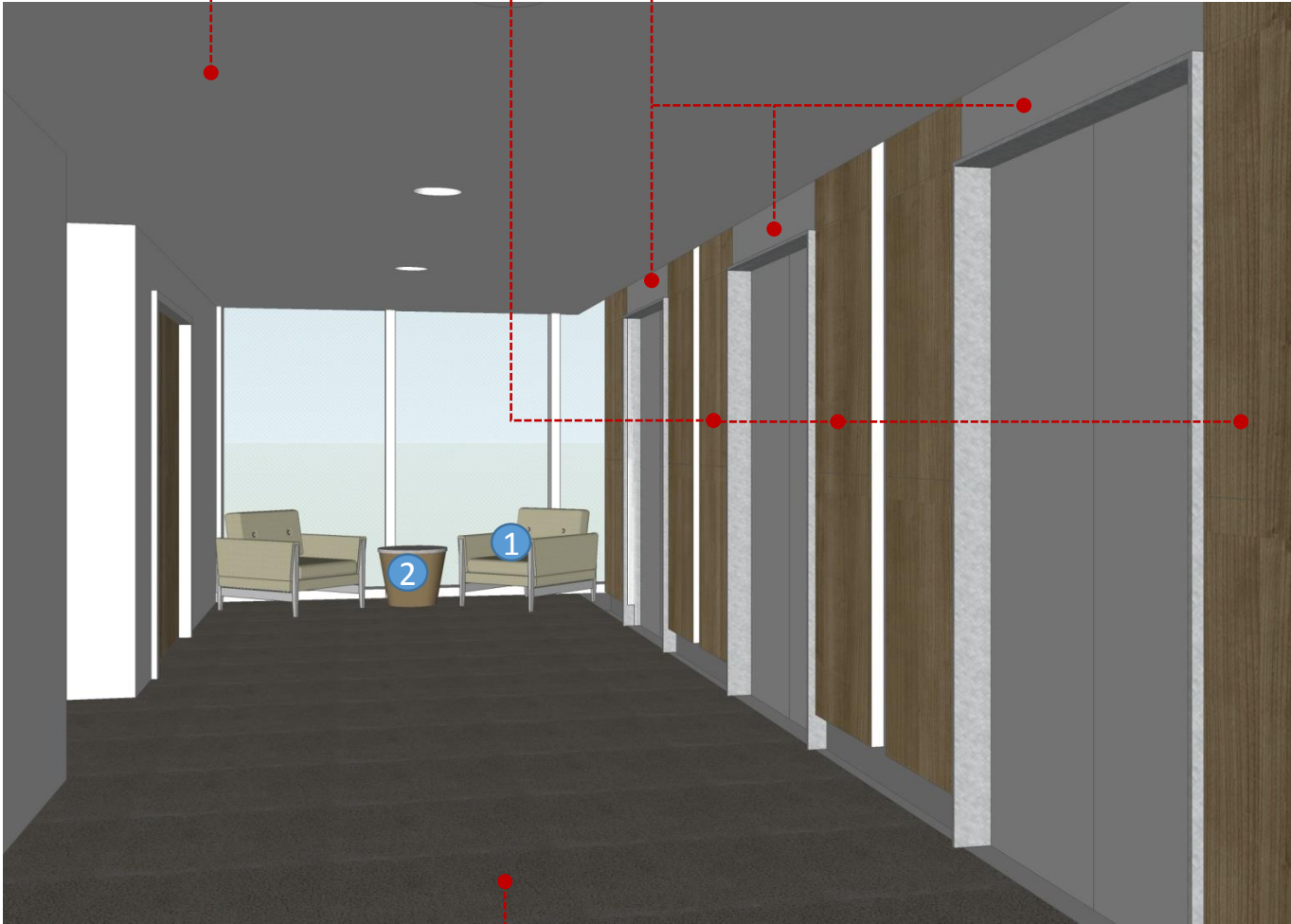
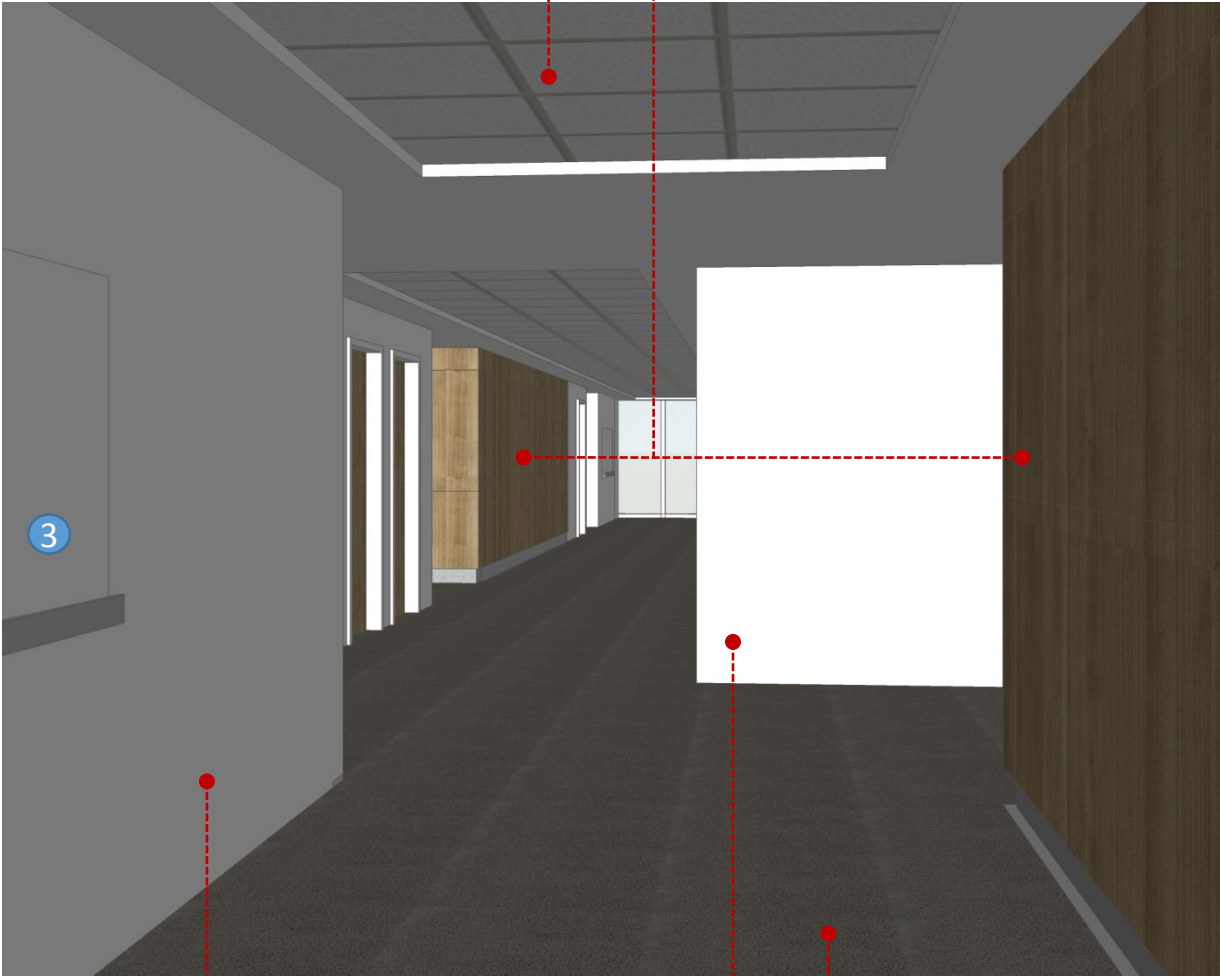
Gypsum Plaster board Ceiling
(by Chang Hua)

6mm thk. Bronze mirror
w/ plywood backing &
SS-insert between HPL and mirror
(by Chang Hua/Falcon)

HPL Wooden Laminate wall
with 100mm SS-skirting
(by Chang Hua/Falcon)



Level 08-Key-Plan



PT-01 Painted wall
(by Chang Hua)

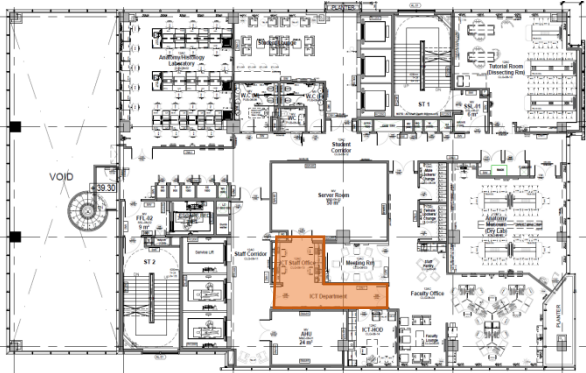
Carpet Flooring
(by Chang Hua)

			ITEM CODE	GROUP	QTY
CLG-08-11	Staff Corridor	1. Sofa: single seat	SOFA1	3	2
		2. Side Table	TBL-ST	3	1
		Window Curtain	TRK-W	1	2
CLG-08-12	Student Corridor	Bin - Single Waste Bin	BIN01-Tall	3	2
		3. Notice Board 1800mm	NB180	3	2

Legend:

Group 0	Maldives National University (MNU) to Supply and Install
Group 1	Main Builder (Chang Hua) to Provide as part of D&B Works
Group 3	Specialist Vendor to Supply and Install
Group 4	IGMH Specialty Vendor to Supply for College of Medicine
Group 5	IGMH Specialty Vendor to Supply for Hospital

Level 08-ICT Staff Department
CLG-08-13

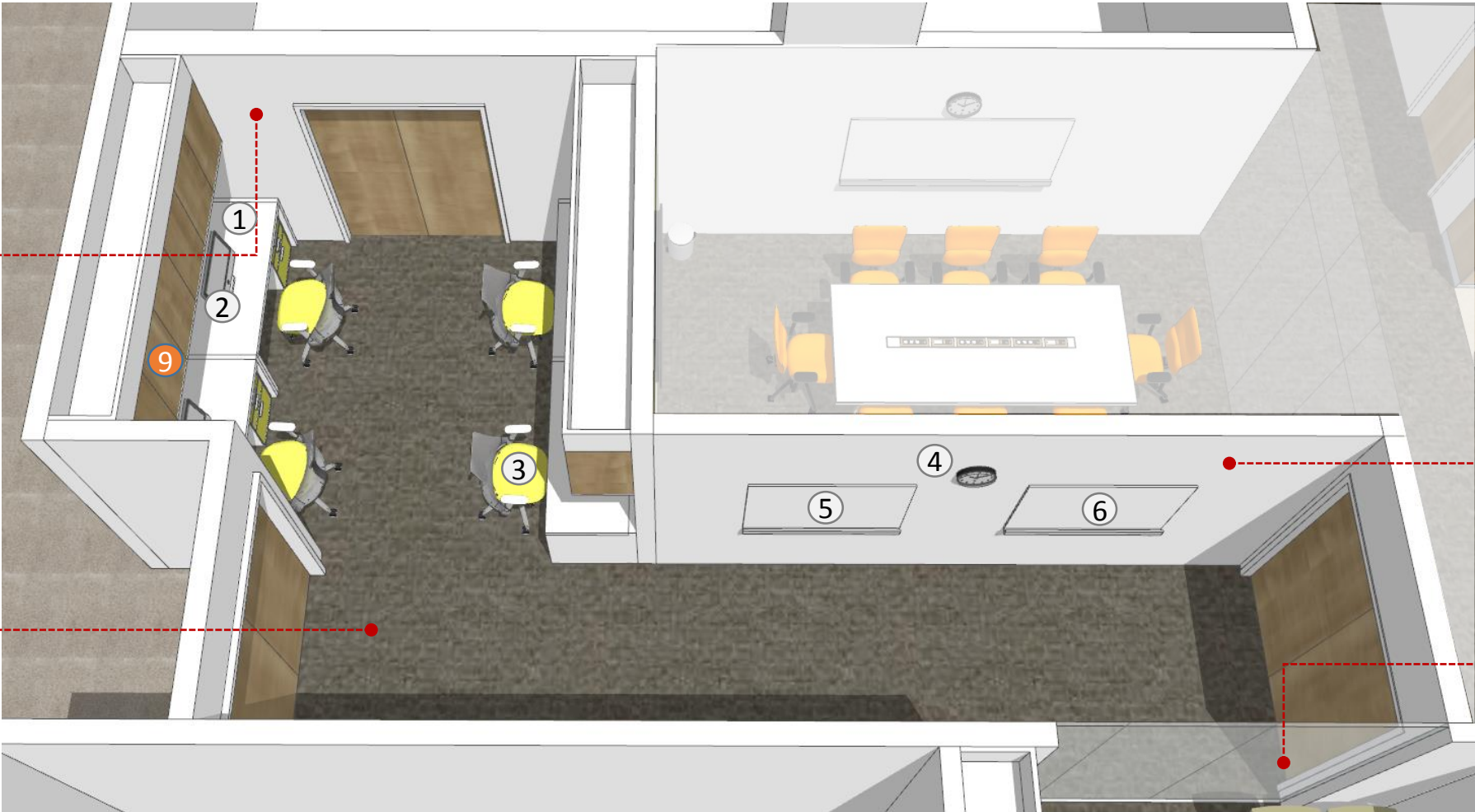


Level 08-Key-Plan

* Tegular Mineral Fiber board
with Gypsum plasterboard
perimeter bulkhead for ceiling
(by Chang Hua)

PT-01 Painted wall
(by Chang Hua)

Carpet Flooring
(by Chang Hua)



PT-01 Painted wall
(by Chang Hua)

Glass wall & glass door
(by Chang Hua)

			ITEM CODE	GROUP	QTY
CLG-08-13	ICT-Staff Office	1. Office Desk 600mm x 1200mm	DSK612	5	4
		2. Computer	CPU	5	4
		3. Chair: Low back staff chair	CHR-LB	5	4
		4. Clock	CLK1	5	1
		5. White board 1200mm x 900mm	WB120	5	1
		6. Notice Board 1800mm	NB180	5	1
		7. Bin - Single Waste Bin	BIN01	5	2
		8. Printer	PRT	5	1
		9. Overhead Cabinet 500mm module w 3 ledges	CU53L	1	12

Legend:

Group 0	Maldives National University (MNU) to Supply and Install
Group 1	Main Builder (Chang Hua) to Provide as part of D&B Works
Group 3	Specialist Vendor to Supply and Install
Group 4	IGMH Specialty Vendor to Supply for College of Medicine
Group 5	IGMH Specialty Vendor to Supply for Hospital

Level 08-ICT HOD
CLG-08-14



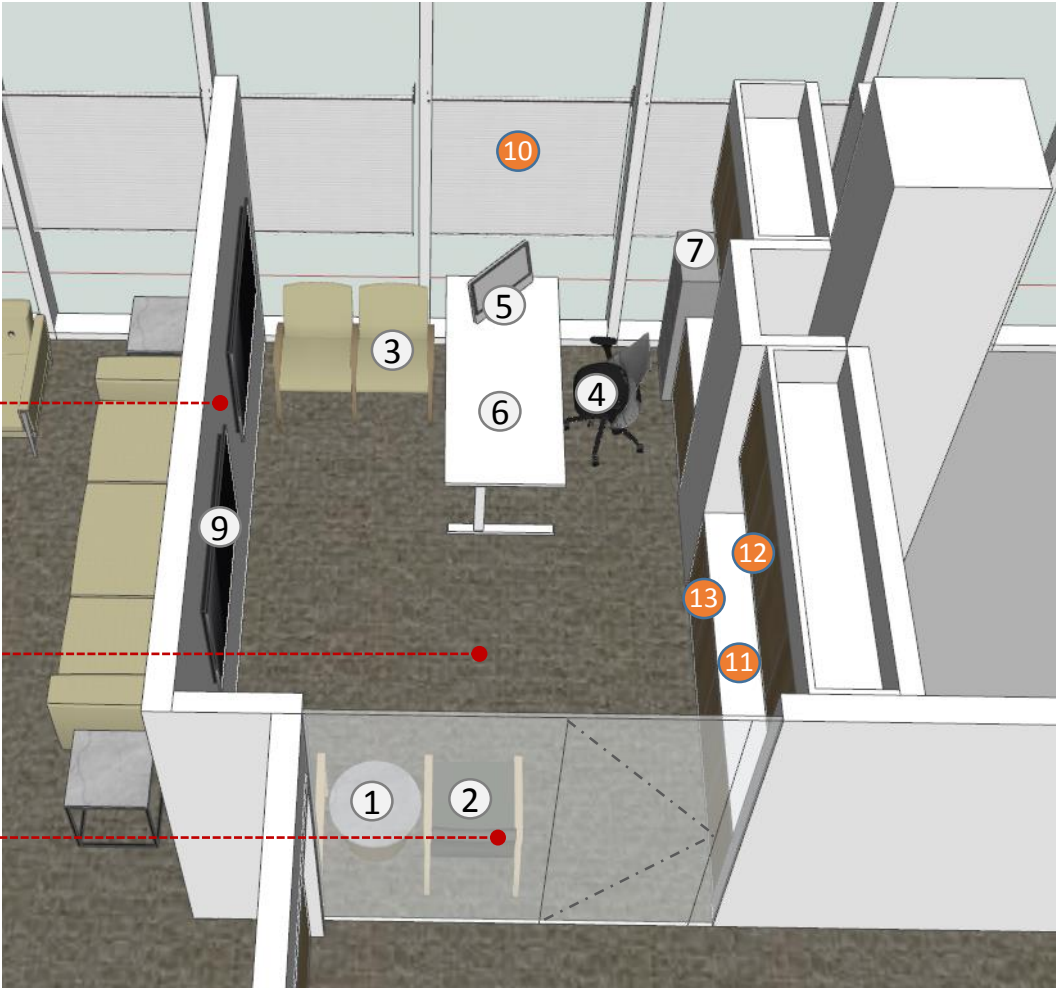
Level 08-Key-Plan

* Tegular Mineral Fiber board
with Gypsum plasterboard
perimeter bulkhead for ceiling
(by Chang Hua)

PT-01 Painted wall
(by Chang Hua)

Carpet Flooring
(by Chang Hua)

Glass wall & glass door
(by Chang Hua)



			ITEM CODE	GROUP	QTY
CLG-08-14	ICT-HOD	1. Side Table	TBL-ST	5	1
		2. Chair - 1 Gang seating	CHR-G1	5	2
		3. Stacking Chair	CHRS	5	2
		4. Chair: Low back staff chair	CHR-LB	5	1
		5. Computer	CPU	5	1
		6. Office Desk 800mm x 1800mm	DSK18	5	1
		7. Filing Cabinet 4 Drawers	FC4D	5	1
		8. Bin - Single Waste Bin	BIN01	5	2
		9. TV-50 Inch	TV50	5	2
		10. Window Curtain	TRK-W	1	2
		11. Bench Counter Top	BCH	1	1
		12. Overhead Cabinet 500mm module w 3 ledges	CU53L	1	6
		13. Underbench Cabinet 500mm module	BU5C	1	4

Legend:

Group 0	Maldives National University (MNU) to Supply and Install
Group 1	Main Builder (Chang Hua) to Provide as part of D&B Works
Group 3	Specialist Vendor to Supply and Install
Group 4	IGMH Specialty Vendor to Supply for College of Medicine
Group 5	IGMH Specialty Vendor to Supply for Hospital



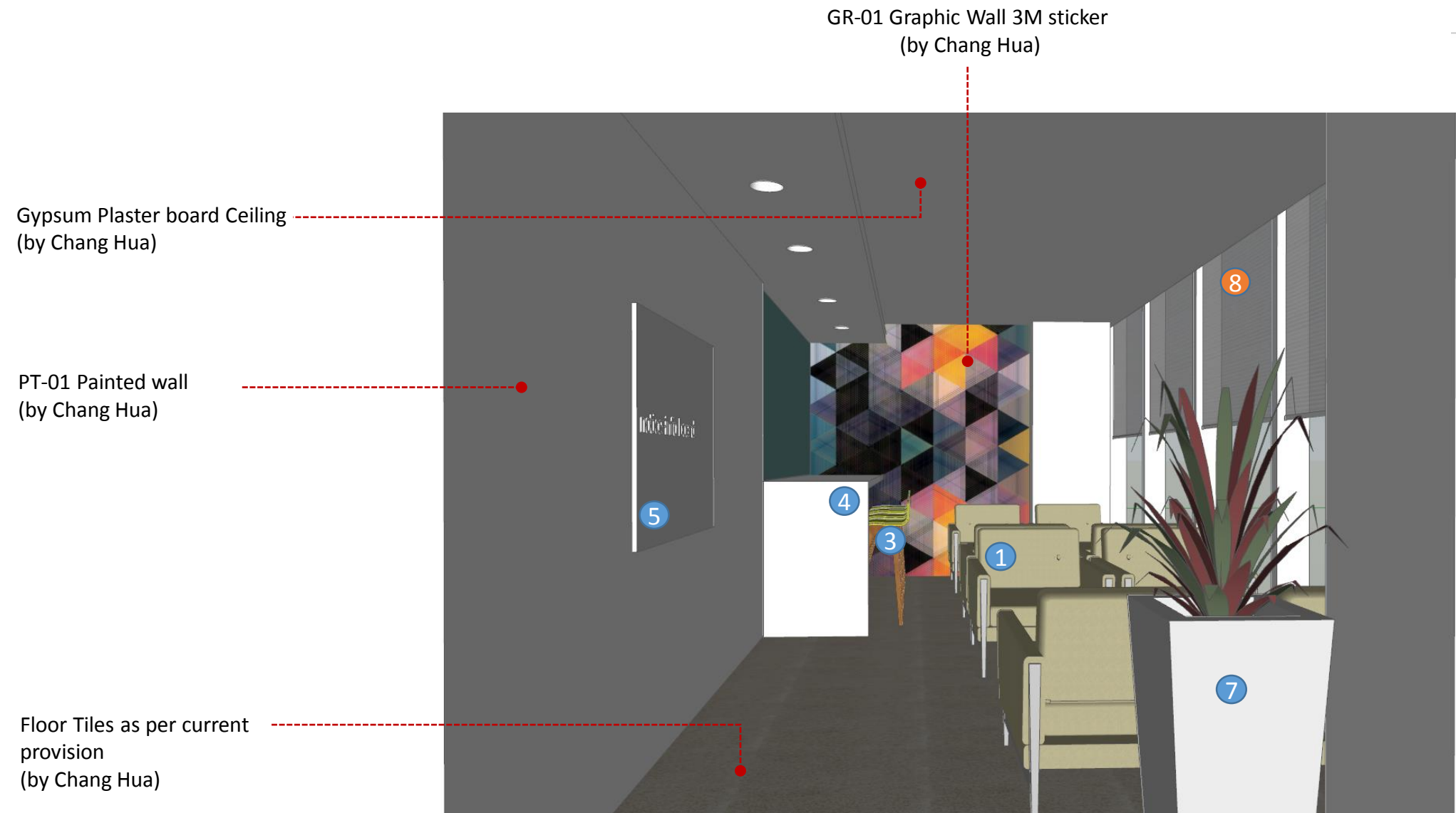
Level 14-Plan

COLLEGE OF MEDICINE,
Male, Maldives- 05March2018

Level 14-Student Lounge
CLG-14-01



Level 14-Key-Plan

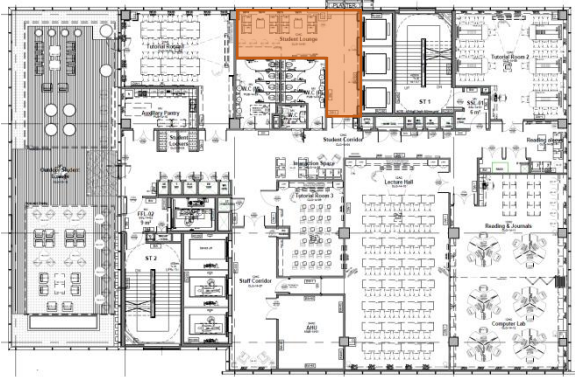


			ITEM CODE	GROUP	QTY
CLG-14-01	Student Lounge	1. Sofa: single seat	SOFA1	3	8
		2. Side Table-round	TBL-STR	3	2
		3. Stool: Height Adjust	STL01	3	4
		4. Bench-Lounge	BCH-LNG	3	1
		5. Notice Board 1200mm	NB120	3	1
		6. Bin - Single Waste Bin	BIN01-Tall	3	2
		7. Potted Plant on the Floor	PLT-M	3	2
		8. Window Curtain	TRK-W	1	4

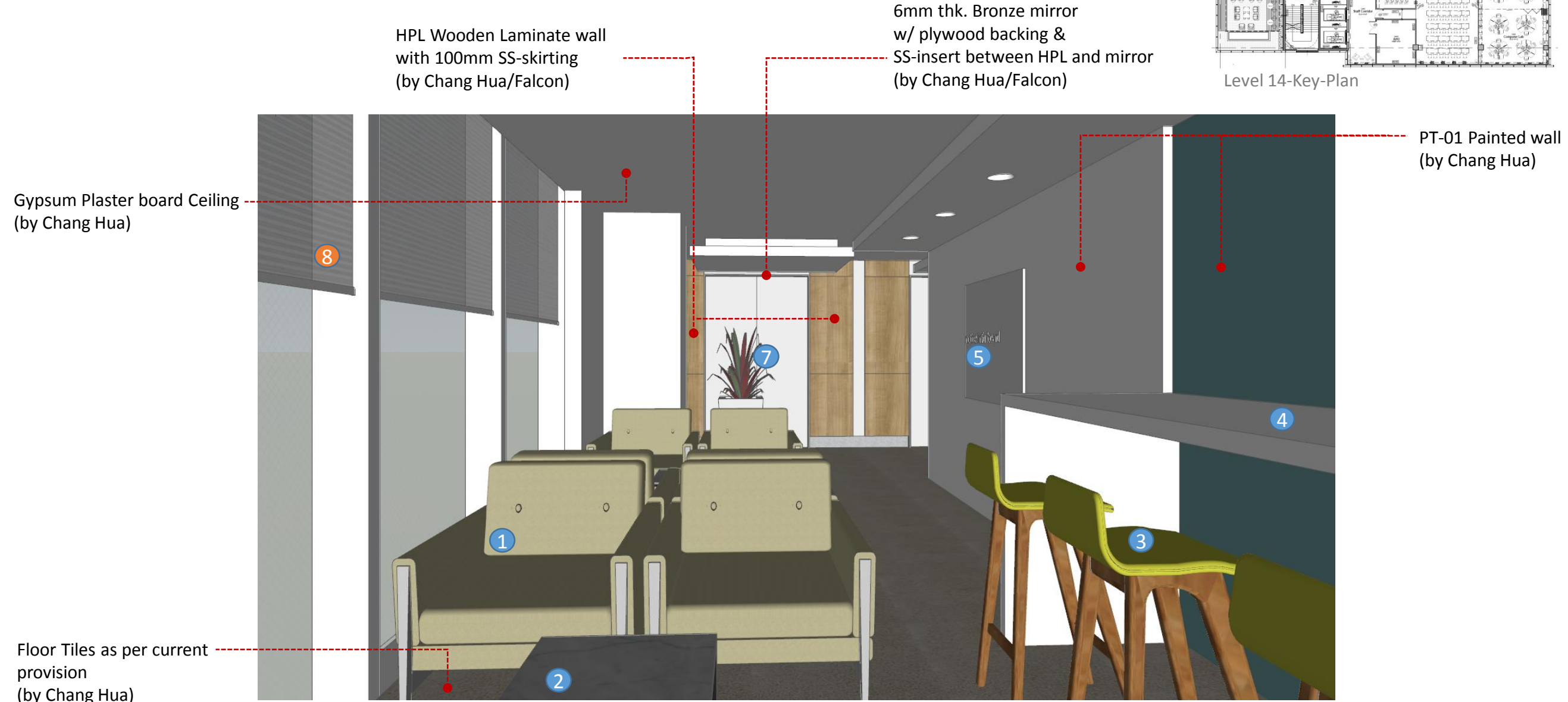
Legend:

Group 0	Maldives National University (MNU) to Supply and Install
Group 1	Main Builder (Chang Hua) to Provide as part of D&B Works
Group 3	Specialist Vendor to Supply and Install
Group 4	IGMH Specialty Vendor to Supply for College of Medicine
Group 5	IGMH Specialty Vendor to Supply for Hospital

Level 14-Student Lounge
CLG-14-01



Level 14-Key-Plan

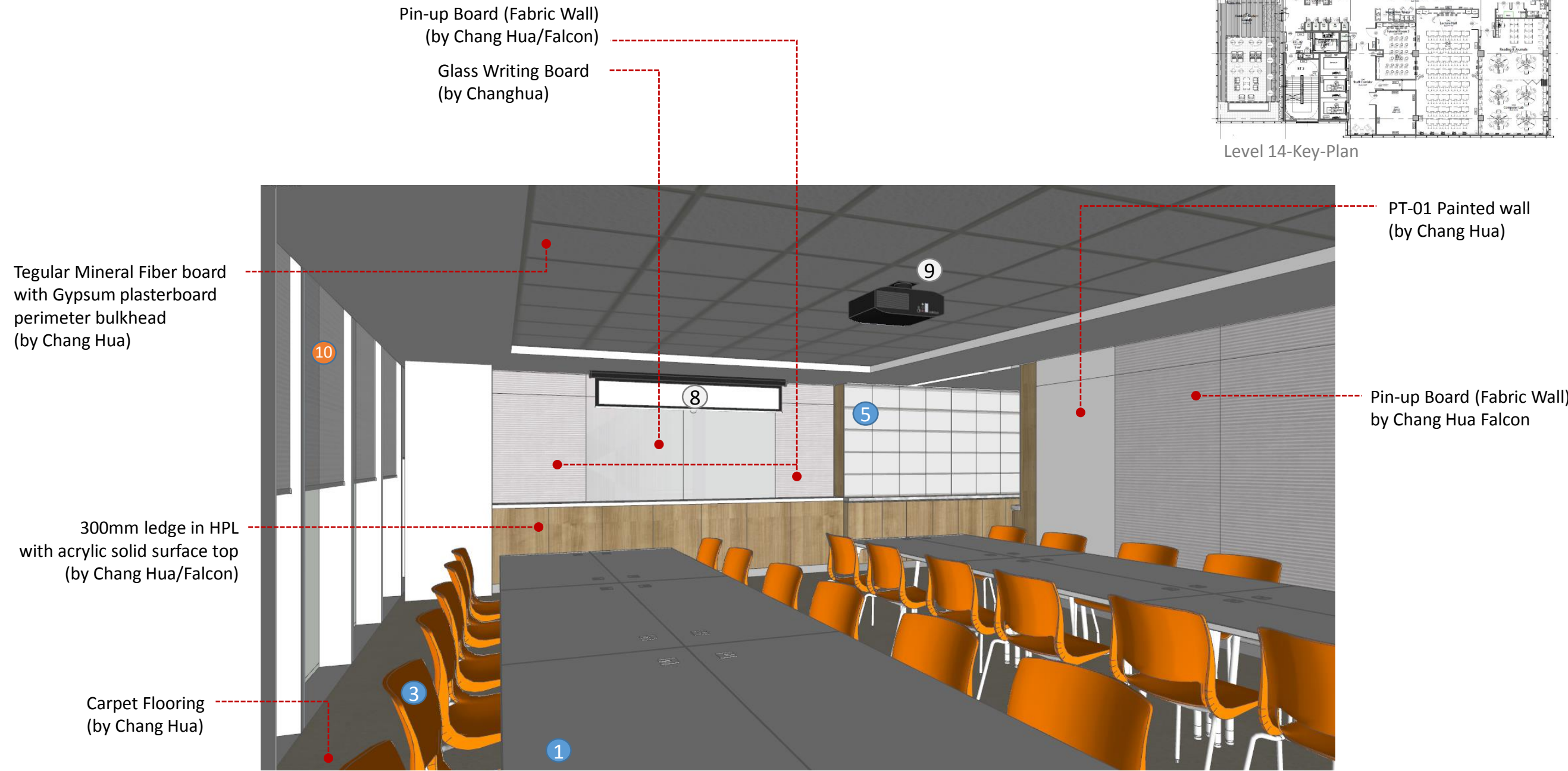
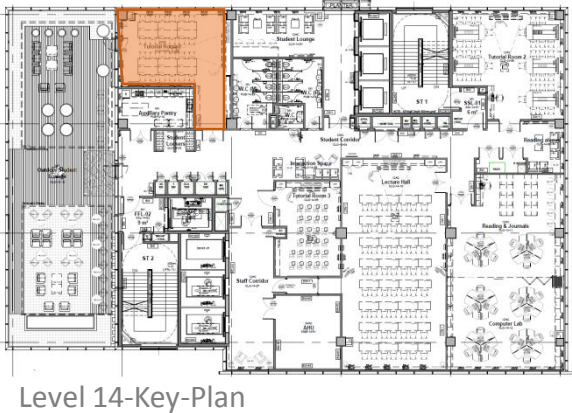


			ITEM CODE	GROUP	QTY
CLG-14-01	Student Lounge	1. Sofa: single seat	SOFA1	3	8
		2. Side Table-round	TBL-STR	3	2
		3. Stool: Height Adjust	STL01	3	4
		4. Bench-Lounge	BCH-LNG	3	1
		5. Notice Board 1200mm	NB120	3	1
		6. Bin - Single Waste Bin	BIN01-Tall	3	2
		7. Potted Plant on the Floor	PLT-M	3	2
		8. Window Curtain	TRK-W	1	4

Legend:

Group 0	Maldives National University (MNU) to Supply and Install
Group 1	Main Builder (Chang Hua) to Provide as part of D&B Works
Group 3	Specialist Vendor to Supply and Install
Group 4	IGMH Specialty Vendor to Supply for College of Medicine
Group 5	IGMH Specialty Vendor to Supply for Hospital

Level 14-Student Lounge
CLG-14-02

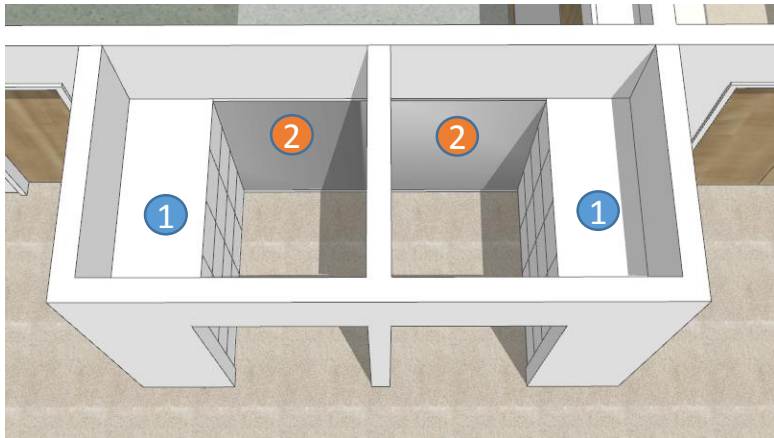


			ITEM CODE	GROUP	QTY
CLG-14-02	Tutorial Room-1	1. Folding Table	TBL-FOLD	3	12
		2. Clock	CLK1	3	1
		3. Stacking Chair	CHRS	3	25
		4. Notice Board 1800mm	NB180	3	2
		5. Convertible Display Cabinet & Glass writing board (one sided)	ANAT-SN	3	2
		6. Hook 02	HK02	3	4
		7. Bin - Single Waste Bin	BIN01	3	2
		8. Pull Down Screen	PDS	4	1
		9. Motorized Projector	PROJ-C	4	1
		10. Window Curtain	TRK-W	1	9

Legend:

Group 0	Maldives National University (MNU) to Supply and Install
Group 1	Main Builder (Chang Hua) to Provide as part of D&B Works
Group 3	Specialist Vendor to Supply and Install
Group 4	IGMH Specialty Vendor to Supply for College of Medicine
Group 5	IGMH Specialty Vendor to Supply for Hospital

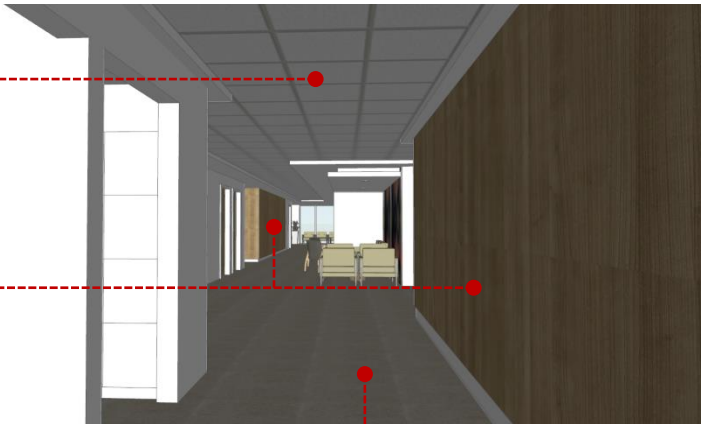
Level 14-Student Lockers & Corridor
CLG-14-03/04 & 07



Tegular Mineral Fiber board with Gypsum plasterboard perimeter bulkhead (by Chang Hua)

HPL Wooden laminate walls and concealed M&E doors (by Chang Hua/Falcon)

Carpet Flooring (by Chang Hua)



- Gypsum Plaster board Ceiling (by Chang Hua)
- 6mm thk. Bronze mirror w/ plywood backing & SS-insert between HPL and mirror (by Chang Hua/Falcon)
- HPL Wooden Laminate wall with 100mm SS-skirting (by Chang Hua/Falcon)



Level 14-Key-Plan



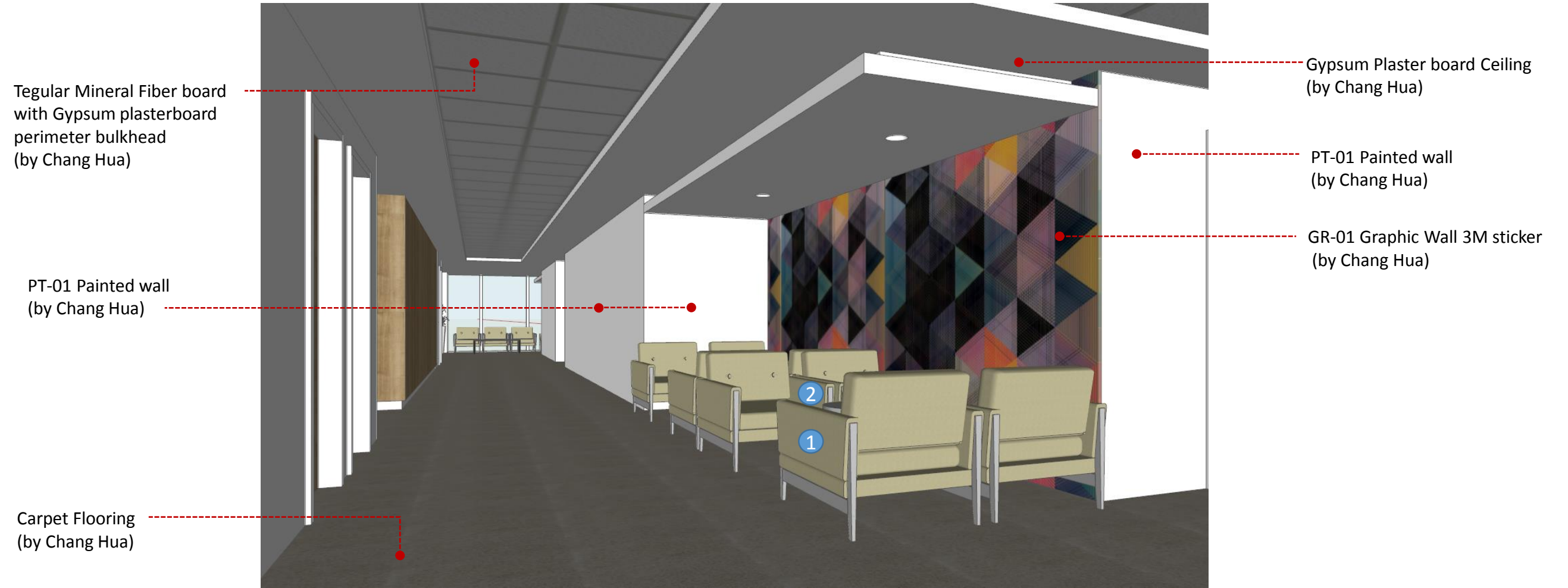
			ITEM CODE	GROUP	QTY
CLG-14-03	Student Lockers	1. Locker - Quarter Height	LCK04	3	10
		2. Mirror Wall to Wall	MRR-W	1	2
CLG-14-04	Student Corridor	3. Bin - Single Waste Bin	BIN01-Tall	3	2
		4. Notice Board 1800mm	NB180	3	1
		Signage	Signage	1	9
CLG-14-07	Staff Corridor	5. Sofa: single seat	SOFA1	3	2
		6. Side Table	TBL-ST	3	1
		7. Potted Plant on the Floor	PLT-M	3	2
		Signage	Signage	1	1
		Window Curtain	TRK-W	1	2

- Legend:**
- Group 0 Maldives National University (MNU) to Supply and Install
 - Group 1 Main Builder (Chang Hua) to Provide as part of D&B Works
 - Group 3 Specialist Vendor to Supply and Install
 - Group 4 IGMH Specialty Vendor to Supply for College of Medicine
 - Group 5 IGMH Specialty Vendor to Supply for Hospital

Level 14-Student Lounge
CLG-14-05



Level 14-Key-Plan

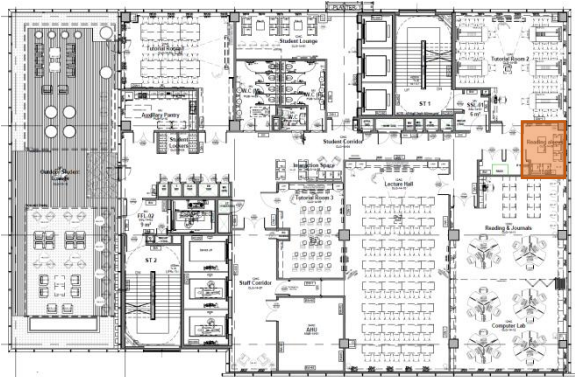


		ITEM CODE	GROUP	QTY
CLG-14-05	Interaction space (corridor)	1. Sofa: single seat	SOFA1	3
		2. Side Table-round	TBL-STR	3
		3. Chair - 1 Gang seating	CHR-G1	3

Legend:

Group 0	Maldives National University (MNU) to Supply and Install
Group 1	Main Builder (Chang Hua) to Provide as part of D&B Works
Group 3	Specialist Vendor to Supply and Install
Group 4	IGMH Specialty Vendor to Supply for College of Medicine
Group 5	IGMH Specialty Vendor to Supply for Hospital

Level 14-Student Lounge
CLG-14-06



Level 14-Key-Plan



			ITEM CODE	GROUP	QTY
CLG-14-06	Reading Alcove	1.Sofa: single seat	SOFA1	3	5
		2.Table- coffee table	TBL-CT	3	1
		3.Side Table-round	TBL-STR	3	1
		4.Potted Plant on the Floor	PLT-M	3	1
		5.Notice Board 1800mm	NB180	3	1
		6.Window Curtain	TRK-W	1	3

Legend:

Group 0	Maldives National University (MNU) to Supply and Install
Group 1	Main Builder (Chang Hua) to Provide as part of D&B Works
Group 3	Specialist Vendor to Supply and Install
Group 4	IGMH Specialty Vendor to Supply for College of Medicine
Group 5	IGMH Specialty Vendor to Supply for Hospital

Level 14-Tutorial Rm 2
CLG-14-08



Level 14-Key-Plan

Tegular Mineral Fiber board
with Gypsum plasterboard
perimeter bulkhead
(by Chang Hua)

PT-01 Painted wall
(by Chang Hua)

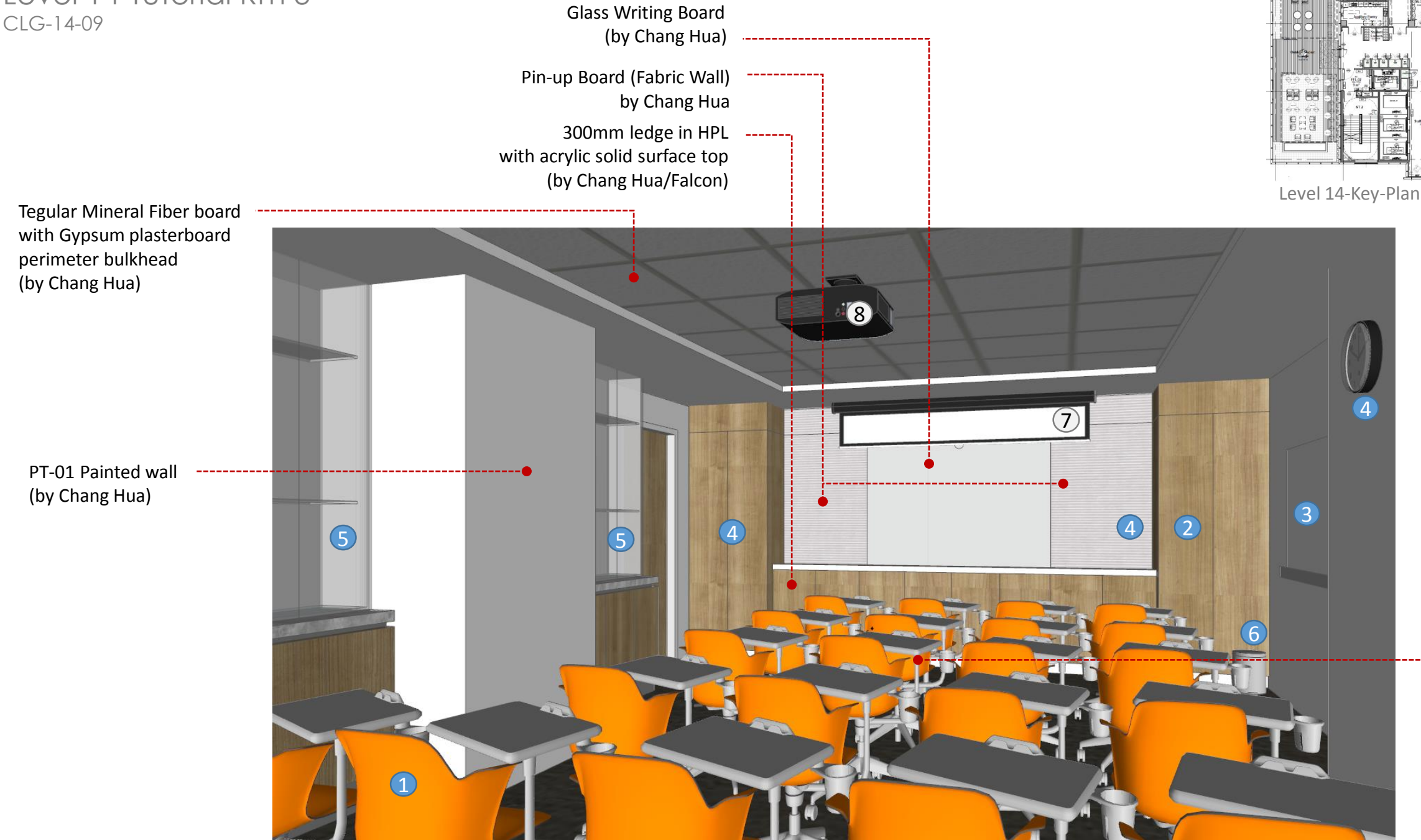


V1-Vinyl Flooring
(by Chang Hua)

			ITEM CODE	GROUP	QTY
CLG-14-08	Tutorial Room 2	1.Collaboration Table -6 Seater with adjustable height TV and built-in sockets	TBL6-COL	3	5
		2.Stacking Chair	CHRS	3	35
		3.Overhead Cabinet 500mm module w 3 ledges	CU53L	3	4
		4.Clock	CLK1	3	1
		5.Bin - Single Waste Bin	BIN01	3	1
		6.Movable White board 1800mm x 900mm	WB-MOV	3	1
		7.Bench Counter top	BCH	3	1
		8.Stool: Height adjust with back rest	STL02	3	1
		Hook 02	HK02	3	4
		9.TV-50 Inch	TV50	4	5
		10.Computer	CPU	4	1
		11.Pull Down Screen	PDS	4	1
		12.Motorized Projector	PROJ-C	4	1
		13.Window Curtain	TRK-W	1	11

Legend:	
Group 0	Maldives National University (MNU) to Supply and Install
Group 1	Main Builder (Chang Hua) to Provide as part of D&B Works
Group 3	Specialist Vendor to Supply and Install
Group 4	IGMH Specialty Vendor to Supply for College of Medicine
Group 5	IGMH Specialty Vendor to Supply for Hospital

Level 14-Tutorial Rm 3
CLG-14-09



Tegular Mineral Fiber board with Gypsum plasterboard perimeter bulkhead (by Chang Hua)

PT-01 Painted wall (by Chang Hua)

Glass Writing Board (by Chang Hua)
Pin-up Board (Fabric Wall) by Chang Hua
300mm ledge in HPL with acrylic solid surface top (by Chang Hua/Falcon)

V1-Vinyl Flooring (by Chang Hua)

			ITEM CODE	GROUP	QTY
CLG-14-09	Tutorial Room 3	1.Stacking Arm-Chair-Foldable	CHRS-A	3	26
		2.Storage Cabinet	CAB1	3	2
		3.Notice Board 1800mm	NB180	3	1
		White board 1800mm x 900mm	WB180	3	1
		4.Clock	CLK1	3	1
		5.Convertible Display Cabinet & Glass writing board (one sided)	ANAT-SN	3	2
		6.Bin - Single Waste Bin	BIN01	3	1
		7.Pull Down Screen	PDS	4	1
		8.Motorized Projector	PROJ-C	4	1

Legend:

Group 0	Maldives National University (MNU) to Supply and Install
Group 1	Main Builder (Chang Hua) to Provide as part of D&B Works
Group 3	Specialist Vendor to Supply and Install
Group 4	IGMH Specialty Vendor to Supply for College of Medicine
Group 5	IGMH Specialty Vendor to Supply for Hospital

Level 14-Lecture Hall
CLG-14-10



Level 14-Key-Plan

Tegular Mineral Fiber board
with Gypsum plasterboard
perimeter bulkhead
(by Chang Hua)

Fabric Wall panel
(by Chang Hua/Falcon)

PT-01 Painted wall
(by Chang Hua)

Glass Writing Board
(by Chang Hua)

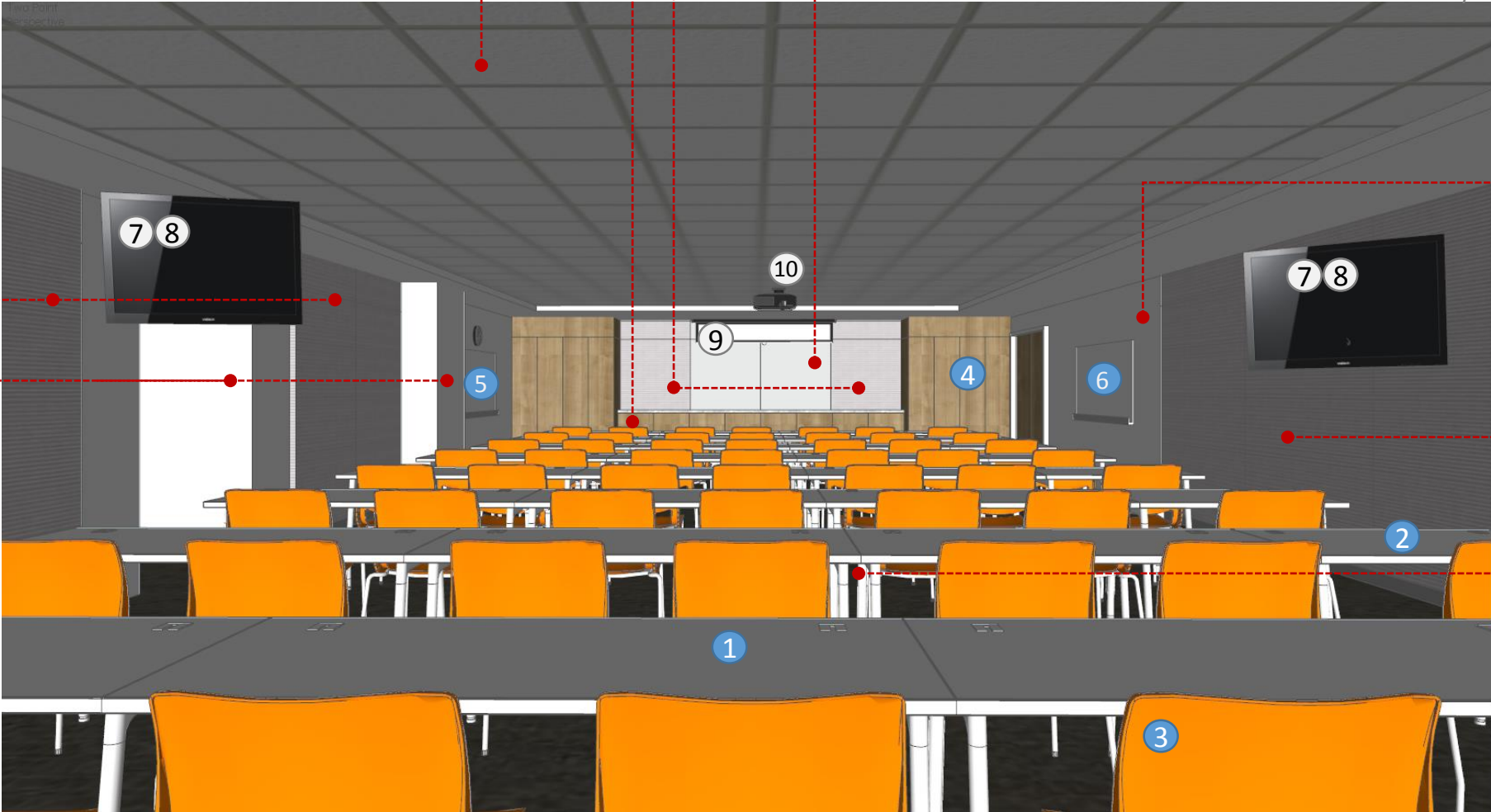
Pin-up Board (Fabric Wall)
by Chang Hua

300mm ledge in HPL
with acrylic solid surface top
(by Chang Hua/Falcon)

PT-01 Painted wall
(by Chang Hua)

Fabric Wall panel
(by Chang Hua/Falcon)

Carpet Flooring
(by Chang Hua)



			ITEM CODE	GROUP	QTY
CLG-14-10	Lecture Hall	1.Folding Table 1500mm	TBL-FOLD15	3	24
		2.Folding Table 1000mm	TBL-FOLD1	3	8
		3.Stacking Chair	CHRS	3	56
		Bin - Single Waste Bin	BIN01	3	3
		4.Storage Cabinet	CAB1	3	4
		5.Notice Board 1800mm	NB180	3	1
		6.White board 1800mm x 900mm	WB180	3	1
		Window Curtain	TRK-W	1	5
		Window Curtain - Blackout	TRK-BO	1	5
		7.TV-50 Inch	TV50	4	2
		8.TV Bracket	BKT-TV	4	2
		9.Pull Down Screen	PDS	4	1
		10.Motorized Projector	PROJ-C	4	1
		AV Speakers	AV-SP	4	4

Legend:

Group 0	Maldives National University (MNU) to Supply and Install
Group 1	Main Builder (Chang Hua) to Provide as part of D&B Works
Group 3	Specialist Vendor to Supply and Install
Group 4	IGMH Specialty Vendor to Supply for College of Medicine
Group 5	IGMH Specialty Vendor to Supply for Hospital

Level 14- Reading & Journals
CLG-14-11

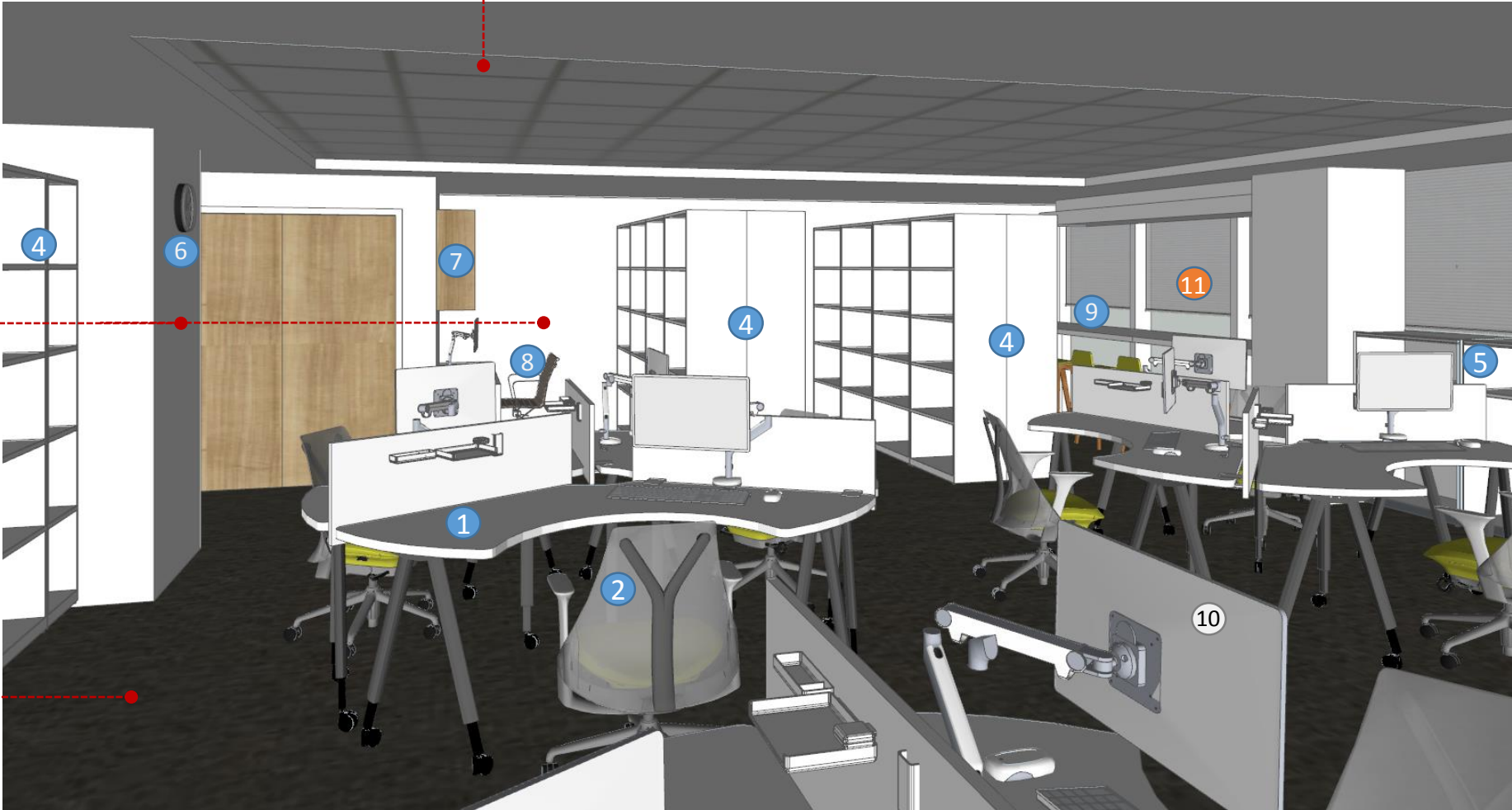


Level 14-Key-Plan

Tegular Mineral Fiber board
with Gypsum plasterboard
perimeter bulkhead
(by Chang Hua)

PT-01 Painted wall
(by Chang Hua)

Carpet Flooring
(by Chang Hua)



			ITEM CODE	GROUP	QTY
CLG-14-11	Reading & Journals	11Computer Table-1/3 Round	COMLAB-T	3	6
		2.Chair: Low back staff chair	CHR-LB	3	6
		3.Stool: Height adjust	STL01	3	5
		Notice Board 1800mm	NB180	3	1
		4.Book shelves-high	BK-SF	3	20
		5.Book shelves-low	LBK-SF	3	4
		Bin - Single Waste Bin	BIN01	3	2
		6.Clock	CLK1	3	1
		7.Overhead Cabinet 500mm module w 3 ledges	CU53L	3	5
		Bench Counter top	BCH	3	1
		8.Stool: Height adjust with back rest	STL02	3	1
		9.Bench-Lounge	BCH-LNG	3	1
		10.Computer	CPU	4	7
		11.Window Curtain	TRK-W	1	5

- Legend:**
- Group 0 Maldives National University (MNU) to Supply and Install
 - Group 1 Main Builder (Chang Hua) to Provide as part of D&B Works
 - Group 3 Specialist Vendor to Supply and Install
 - Group 4 IGMH Specialty Vendor to Supply for College of Medicine
 - Group 5 IGMH Specialty Vendor to Supply for Hospital

Level 14- Computer Lab
CLG-14-12



Level 14-Key-Plan

Tegular Mineral Fiber board
with Gypsum plasterboard
perimeter bulkhead
(by Chang Hua)

Operable wall
(by Chang Hua)

Carpet Flooring
(by Chang Hua)



			ITEM CODE	GROUP	QTY
CLG-14-12	Computer Lab	1.Computer Table-1/3 Round	COMLAB-T	3	12
		2.Chair: Low back staff chair	CHR-LB	3	12
		3.Book shelves-high	BK-SF	3	8
		4.Book shelves-low	LBK-SF	3	6
		Bin - Single Waste Bin	BIN01	3	1
		Clock	CLK1	3	1
		5.Computer	CPU	4	12
		6.Window Curtain	TRK-W	1	10

Legend:

Group 0

Maldives National University (MNU) to Supply and Install

Group 1

Main Builder (Chang Hua) to Provide as part of D&B Works

Group 3

Specialist Vendor to Supply and Install

Group 4

IGMH Specialty Vendor to Supply for College of Medicine

Group 5

IGMH Specialty Vendor to Supply for Hospital

Level 14- Student Garden Lounge
CLG-14-13



Level 14-Key-Plan



Landscape as per
Current provision
For the Hospital
(by Chang Hua)

			ITEM CODE	GROUP	QTY
CLG-14-13	Outdoor Student Lounge	1.Outdoor Single seater Sofa	SOFA1-OD	3	22
		2.Outdoor 1-gang Chair	CHR1-OD	3	16
		3.Outdoor Table-Square	TBL1-OD	3	4
		4.Outdoor Table-Round	TBL2-OD	3	8
		5.Outdoor Stool Chair	STL-OD	3	4
		6.Outdoor Retractable Shading Device	RECT-S	3	2

Legend:	
Group 0	Maldives National University (MNU) to Supply and Install
Group 1	Main Builder (Chang Hua) to Provide as part of D&B Works
Group 3	Specialist Vendor to Supply and Install
Group 4	IGMH Specialty Vendor to Supply for College of Medicine
Group 5	IGMH Specialty Vendor to Supply for Hospital