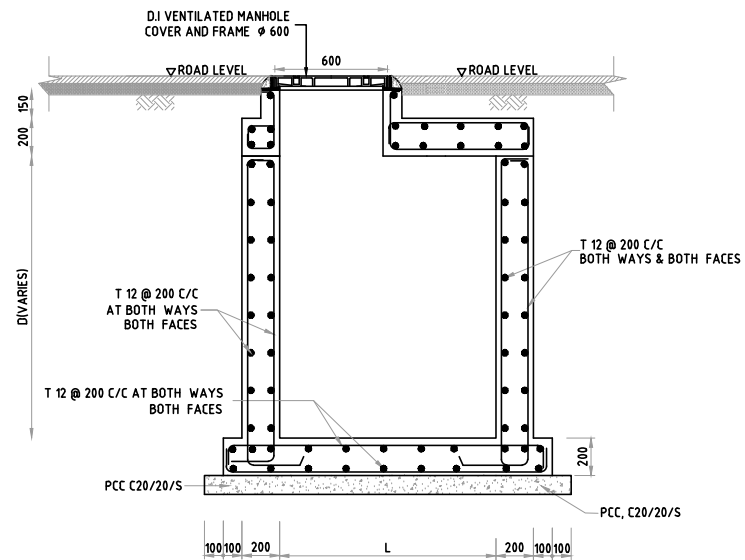


SECTION A-A  
SCALE 1:20



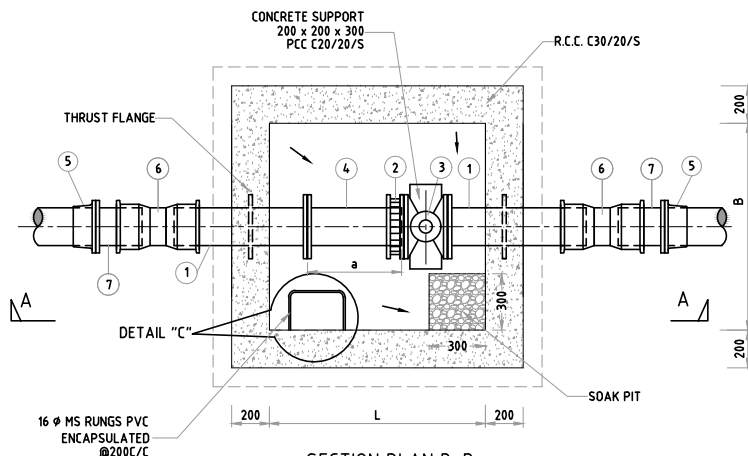
REINFORCEMENT DETAILS AT SECTION A-A  
SCALE 1:20

DIMENSIONS OF VALVE CHAMBER

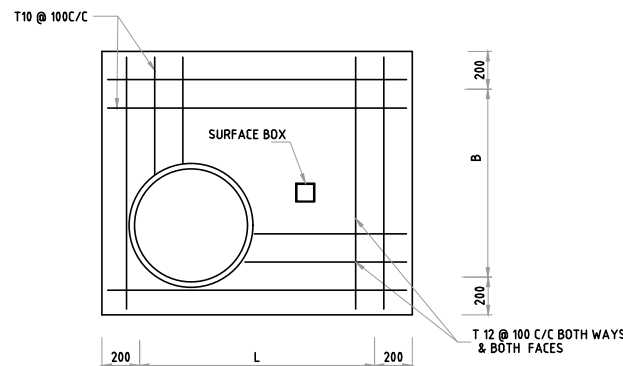
| DIA OF PIPE (D) | L    | B    | a   |
|-----------------|------|------|-----|
| 200             | 1150 | 1100 | 500 |
| 250             | 1600 | 1200 | 250 |

SCHEDULE OF SPECIALS AND FITTINGS

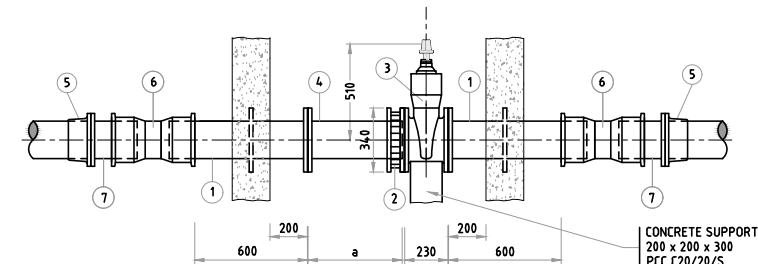
| ITEM | SPECIALS AND FITTINGS                            | QTY |
|------|--|-----|
| 1    | DI FLANGED SPIGOT PIPE WITH WELDED THRUST FLANGE | 2   |
| 2    | FLANGE ADAPTOR                                   | 1   |
| 3    | DI GATE VALVE                                    | 1   |
| 4    | DI FLANGED-SPIGOT PIECE                          | 1   |
| 5    | DI/PE ADOPTOR                                    | 2   |
| 6    | DI COLLAR  | 2   |
| 7    | DI SHORT LENGTH FLANGED SPIGOT PIECE             | 2   |



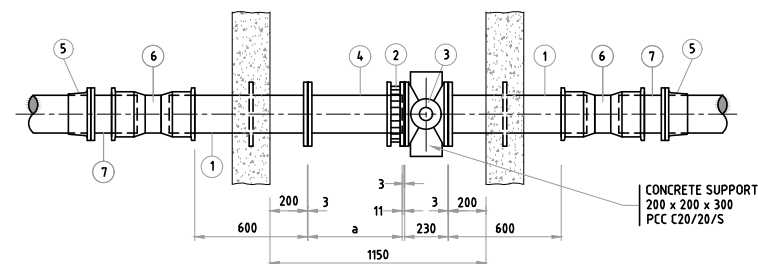
SECTION PLAN B-B  
SCALE 1:20



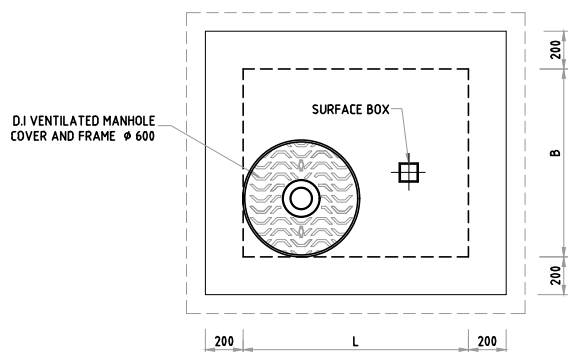
REINFORCEMENT DETAILS OF COVER SLAB  
SCALE 1:20



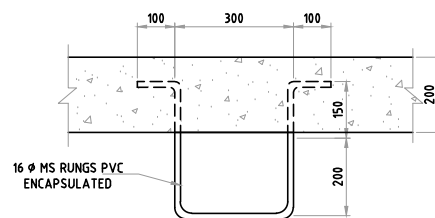
ELEVATION



PLAN  
GENERAL ARRANGEMENT OF VALVE & FITTINGS FOR Ø200 PIPE  
SCALE 1:20



ROOF PLAN  
SCALE 1:20



DETAIL - C  
T16 MS RUNGS PVC ENCAPSULATED  
SCALE 1:10

- All dimensions are in mm
- For location and depths of Gate Valve chamber refer to drawings of pipeline plans and profiles.
- The specials and pipe fittings shall be selected to suit the supply pipe line
- All the valves, specials and pipes inside the chamber shall be of Ductile iron
- Gate Valve shall comply with BS 5150
- DI pipe & Fitting shall comply with BS 4772
- Building materials:-  
Description of building materials is as follows  
Compressive strength of concrete C 30 / 20 / S  
Sulphate resistant cement  
Maximum size of aggregate

- Concrete:  
a. mixes shall comply with BS 8110  
b. minimum 28 day characteristic strength in accordance with BS 8110
- Cover to reinforcement to be 50mm,
- The steel used shall be of fy 350 grade.
- The tanking shall be with two layers of Bituminous Paint for external surfaces of Valve chamber
- Gate Valve Chamber to be provided for Pipe dia 200 to 300 mm
- MH Cover Should Comply to BS EN 124 Class D400

#### ABBREVIATIONS

PIL - PIPE INVERT LEVEL.  
MS - MILD STEEL.  
DI - DUCTILE IRON.  
PE - POLY ETHYLENE  
RCC -REINFORCED CEMENT CONCRETE  
PCC - PLAIN CEMENT CONCRETE

#### TENDER PURPOSE

|   |  |  |  |   |  |  |  |
|---|--|--|--|---|--|--|--|
|   |  |  |  | CLIENT<br>MINISTRY OF ENVIRONMENT AND ENERGY<br>MALE' REPUBLIC OF MALDIVES  |  |  |  |
|   |  |  |  | PROJECT<br>PROVISION OF RAINWATER HARVESTING SYSTEM IN 8 ISLANDS  |  |  |  |
|   |  |  |  | ASSIGNMENT<br>CONSULTANCY SERVICES FOR DESIGN AND SUPERVISION OF RAINWATER HARVESTING SYSTEM IN AA. HEMANDHOO, AA. BODUFULHADHOO, AA. MATHIVERI, ADH. KUNBURUDHOO, ADH. DHIGURAH, DH. BANDIDHOO, DH. HULHIDHIELI, DH. MEEDHOO, MALDIVES (PACKAGE - 3) |  |  |  |
|   |  |  |  | DRAWING TITLE<br>STANDARD DRAWING OF SLUISE VALVE CHAMBER   |  |  |  |
| REVISION  |  |  |  | APPROVED<br>SSS<br>CHECKED<br>SSS<br>DESIGNED<br>SPP<br>DRAWN<br>PDP  |  |  |  |
| CONSULTANT<br>SHAH TECHNICAL CONSULTANTS PVT. LTD., INDIA<br>IN ASSOCIATION WITH<br>DEVELOPMENT TECHNOLOGIES MALDIVES, MALDIVES |  |  |  | SCALE<br>AS SHOWN<br>DATE<br>FEB 2018<br>DRAWING NUMBER<br>WS/STD/03<br>REVISION<br>0   |  |  |  |