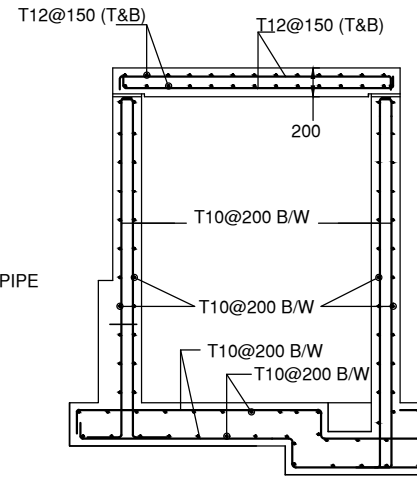
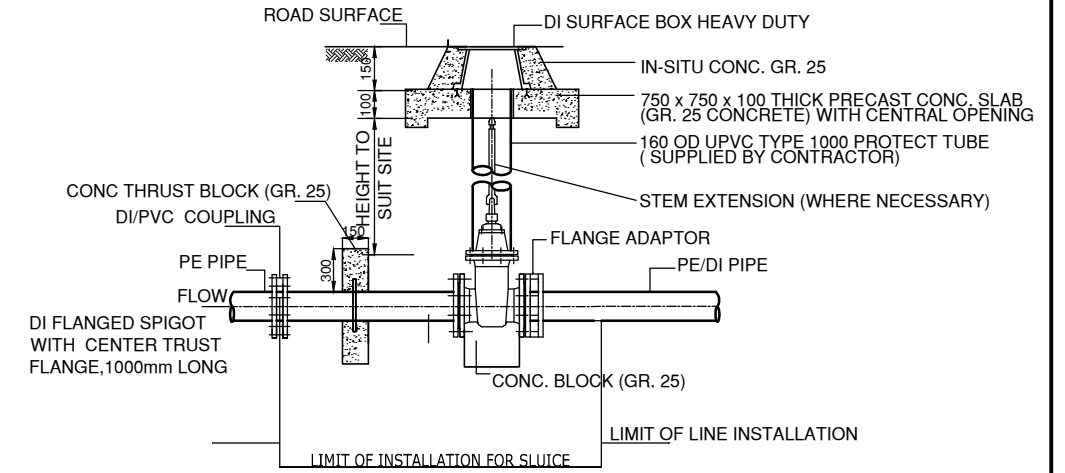


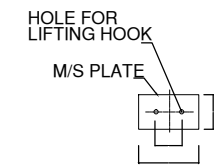
SECTION (B)



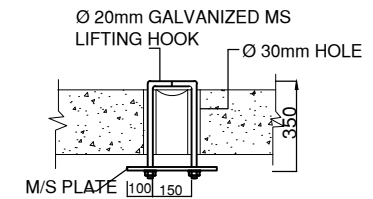
CHAMBER



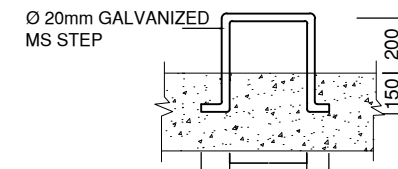
SLUICE VALVES WITH SURFACE BOX



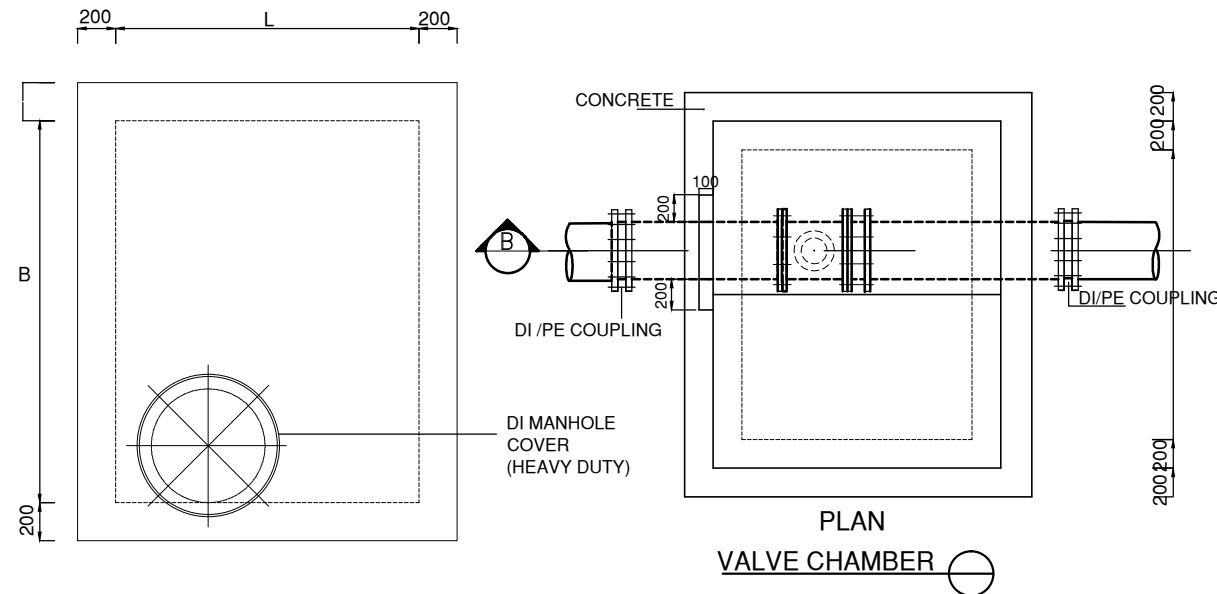
DETAILS OF MS PLATE



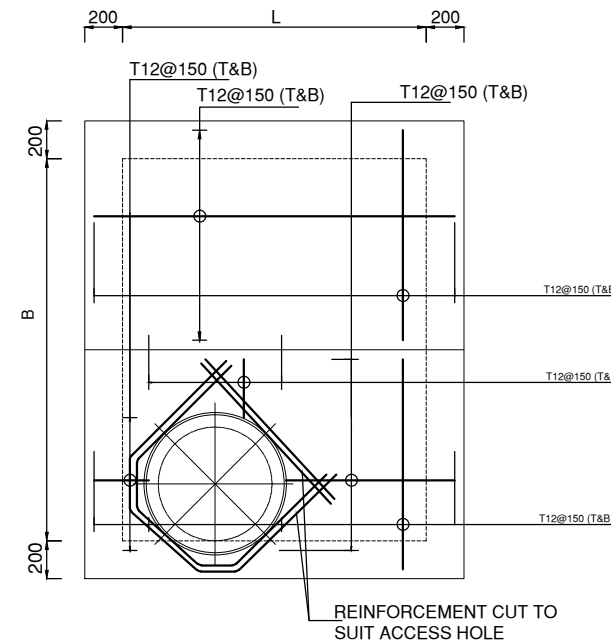
DETAILS OF LIFTING HOOK



DETAILS OF STEPS



PLAN VALVE CHAMBER



REINFORCEMENT CUT TO SUIT ACCESS HOLE

SELECTION OF VALVES AND CHAMBERS			
LINE DIA. (mm) & TYPE	VALVE DIA. (mm)	VALVE OPERATION	TYPE OF CHAMBER
250/300 DI	250/300	GEARED KEY OPERATED	VALVE CHAMBERS
280 PVC	250	GEARED KEY OPERATED	VALVE CHAMBERS
225 PVC	200	GEARED KEY OPERATED	VALVE CHAMBERS
160 PVC	150	GEARED KEY OPERATED	VALVE CHAMBERS
110 PVC	100	GEARED KEY OPERATED	VALVE CHAMBERS

INTERNAL DIMENSIONS OF GATE VALVE CHAMBERS :

VALVE DIA.(mm)	L (mm)	B (mm)
Upto 200	1000	1000
250 / 300	1500	1500

NOTES

- ALL DIMENSIONS ARE IN MILLIMETRES
- CONCRETE PROTECTION TO BE AS SPECIFIED
- THE SEALANT SHALL BE ELASTIC, ONE COMPONENT, GUN APPLIED SEALANT ON POLYURETHANE BASIS CONFORMING TO BS 4254 SUITABLE FOR METAL WORK AND CONCRETE.
Eg. SIKAFLEX - 1A OR APPROVED EQUAL.
- MANHOLE FRAME SHALL BE FIRMLY FIXED TO THE CHAMBER WITH 4 Nos. RAG BOLTS OR SIMILAR MANNER.
- MANHOLE COVER SHALL BE OF HINGED, HEAVY DUTY (CLASS D 400) VENTILATED TYPE WITH 600 DIA. MINIMUM CLEAR OPENING.



CLIENT:
MINISTRY OF ENVIRONMENT
AND ENERGY

CONSULTANCY SERVICES FOR DESIGN OF WATER SUPPLY FACILITIES IN Ha.HORAFUSHI,
Hdh.HANIMAADHOO,Sh.MILANDHOO,R.UNGOOFAARU,Lh.NAIFARU,Dh.KUDAHUVADHOO
,Th.GURADHOO AND Ga.VILLINGILI , MALDIVES

DESIGN
ENGINEER

DRAWN
DATE

CHECKED
DESIGN CHIEF

APPROVED

SL.NO

DRWING NO

DESCRIPTION



GREENTECH CONSULTANTS (Pvt.) Ltd IN ASSOCIATION WITH
DEVELOPMENT COLLABORATION PARTNERSHIP (Pvt.) Ltd MALDIVES
AND OPTIMUM SOLOUTIONS (Pvt) Ltd, MALDIVES

TITLE:

GATE VALVE CHAMBERS
DISTRIBUTION NETWORK
HANIMAADHOO

DATE

DRG.NO: HANIMAADHOO/STD/04
SCALE: NOT TO SCALE