

Proposed Multipurpose Hall Building at R. Alifushi School

SERVICES DRAWINGS
Client: Ministry of Education



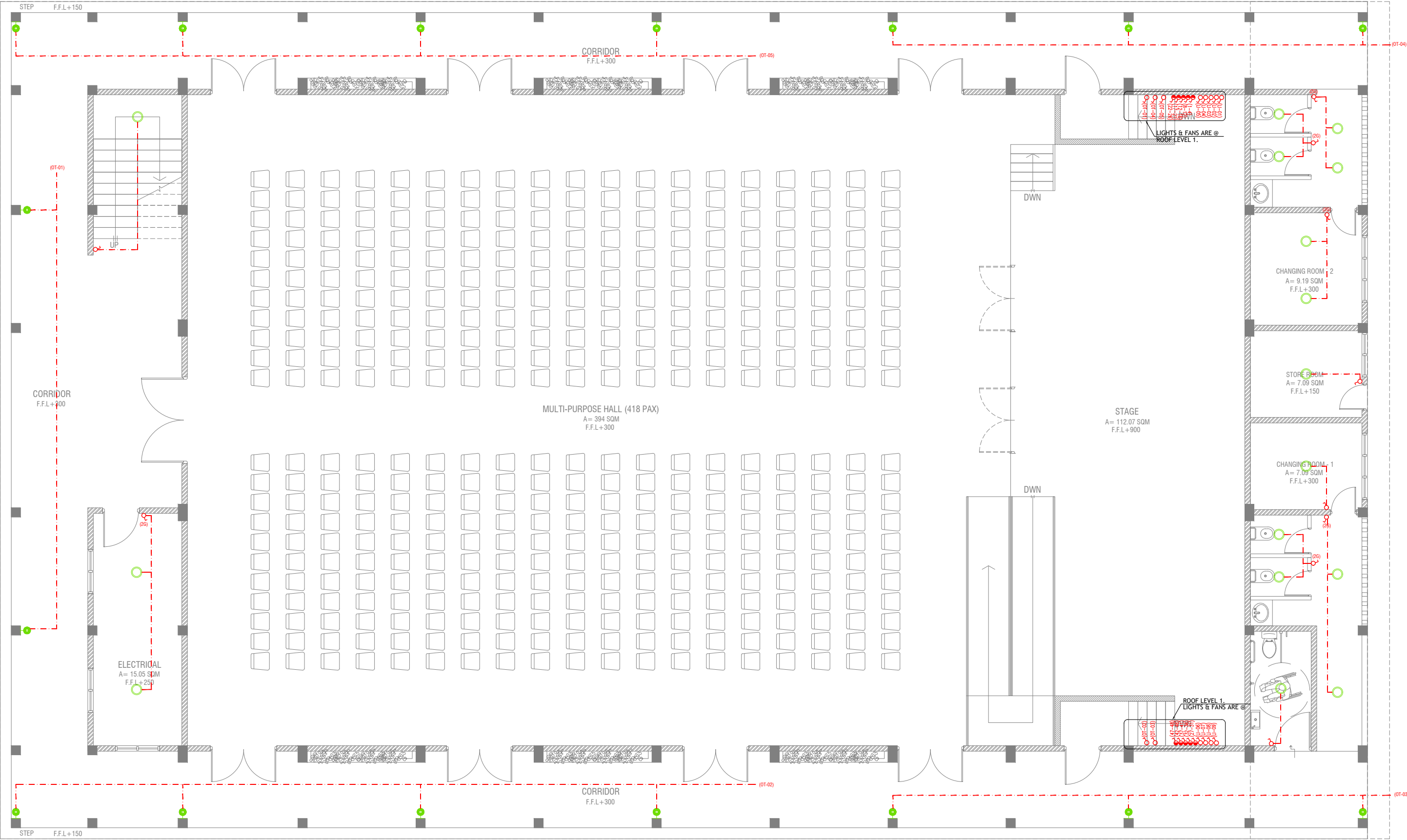
RIYAN PRIVATE LIMITED

t : +9602315049 f : +9602310776
e : info@riyan.com.mv
w : www.riyan.com.mv

3rd floor, H. Azum, Ameenemogu, Male

TABLE OF CONTENTS

DRAWING No.	TITLE	REVISION No.	DATE	REMARKS
A R C H I T E C T U R A L		---	---	---
EL - 01 / 02	GROUND FLOOR LIGHTING LAYOUT	---	---	---
EL - 02 / 02	1ST FLOOR LIGHTING LAYOUT	---	---	---
EP - 01 / 02	GROUND FLOOR POWER LAYOUT	---	---	---
EP - 02 / 02	1ST FLOOR POWER LAYOUT	---	---	---
DR - 01 /04	GROUND FLOOR PLUMBING & DRAINAGE LAYOUT	---	---	---
DR - 02 /04	1ST FLOOR PLUMBING & DRAINAGE LAYOUT	---	---	---
DR - 03 /04	ROOF PLAN -1 PLUMBING & DRAINAGE LAYOUT	---	---	---
DR - 04 /04	ROOF PLAN -2 PLUMBING & DRAINAGE LAYOUT	---	---	---
FDP - 01 / 02	GROUND FLOOR FDP LAYOUT	---	---	---
FDP - 02 / 02	1ST FLOOR FDP LAYOUT	---	---	---



GROUND FLOOR LIGHTING LAYOUT

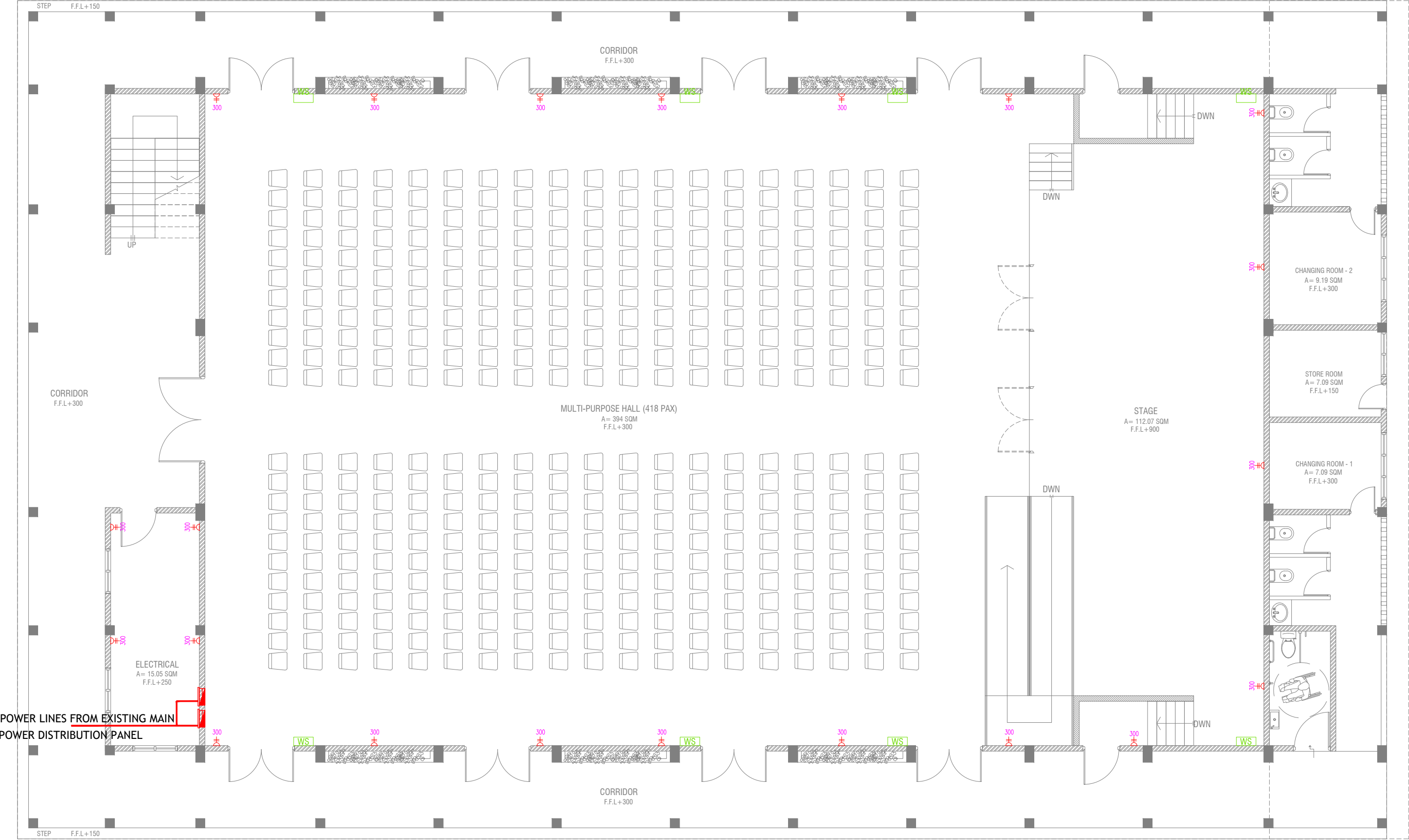
SCALE 1:100

LEGEND

- 4 x 55W PLL Lamps
(Wire guard, Polycarbonate diffuser, Emergency and dimming versions)
- C2 CEILING DOWN LIGHT (18W)
- CEILING FAN (52" - 54")
- WPD OUT DOOR WALL LIGHT

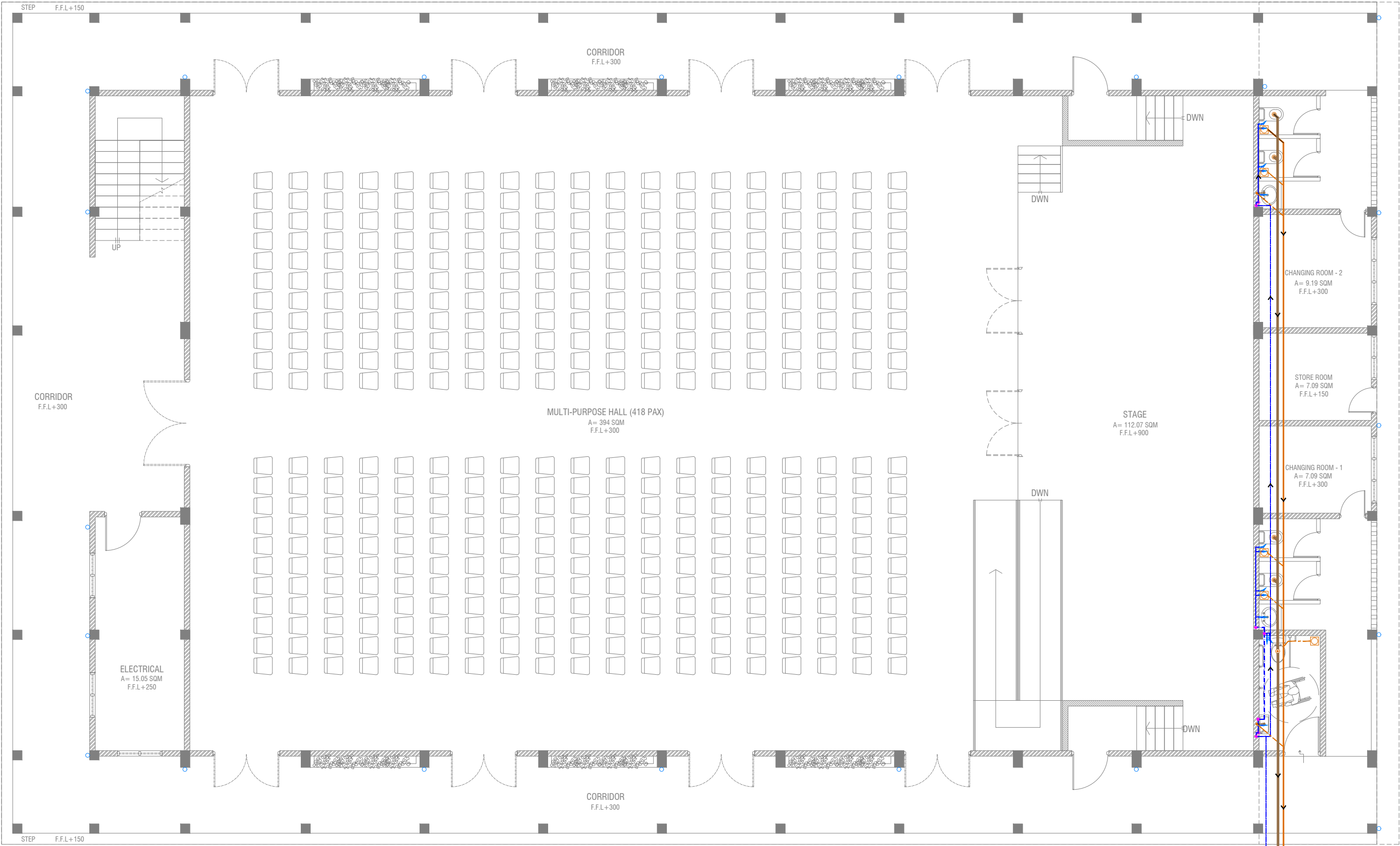
- LIGHT SWITCH
- CEILING FAN SWITCH
- CIRCUIT LINE
- SWITCHING LINE

NOTE:
-THE DOWNROD OF THE FANS IN THE HALL SHOULD BE NOT LESS THAN 60"



GROUND FLOOR POWER LAYOUT
SCALE 1:100

- PHONE EXTENSION
- COMPUTER NETWORK OUTLET (RJ 45 CONNECTORS)
- TELEPHONE OUTLET (RJ11, CONNECTOR)
- 13A POWER POINT
- 13A TWIN SOCKET OUTLET
- 15A.SWITCHED/ SPUR UNIT @ H.L.
- DISTRIBUTION BOX
- WALL SPEAKERS AT CEILING LEVEL



GROUND FLOOR PLUMBING & DRAINAGE LAYOUT

SCALE 1:100

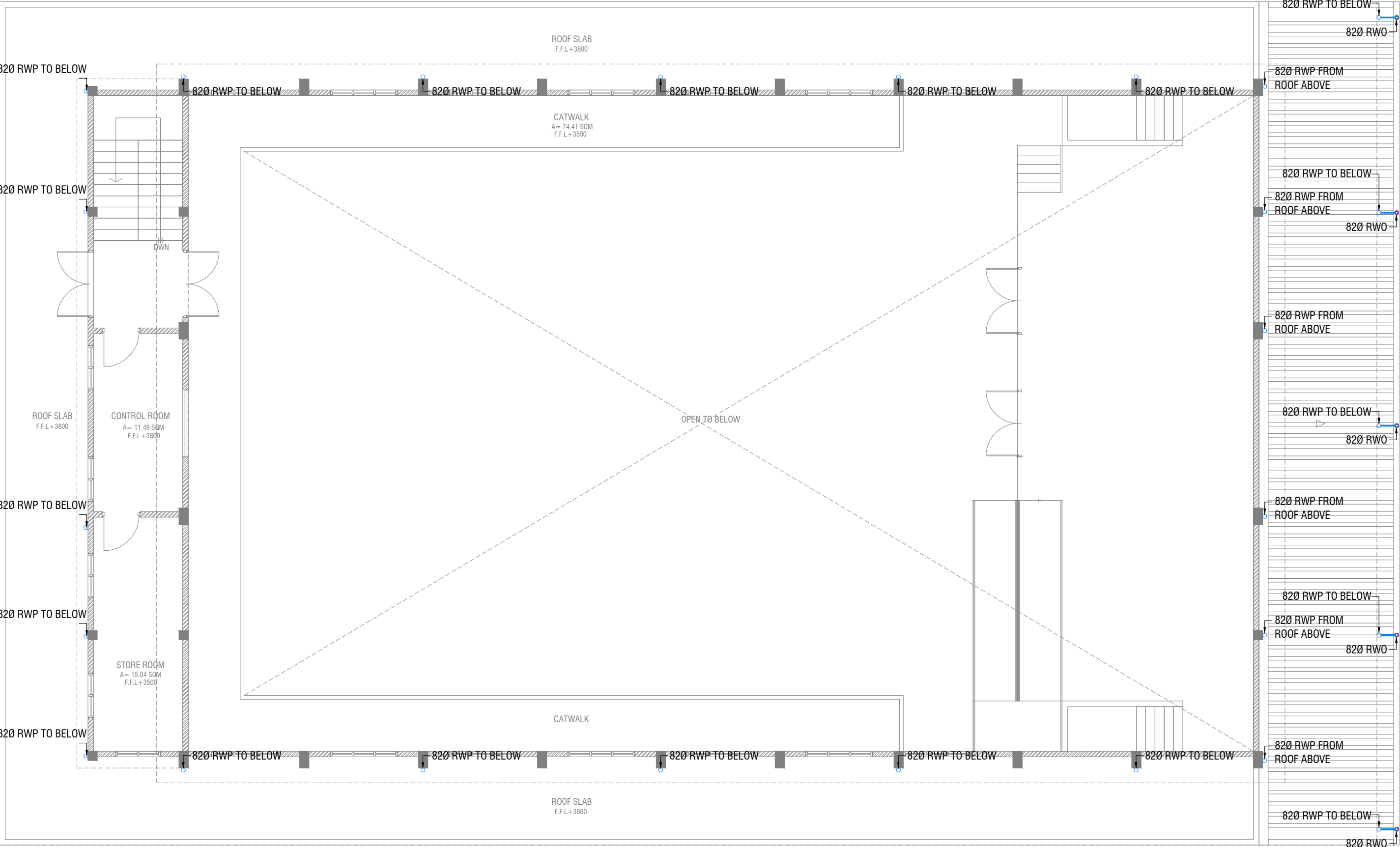


LEGEND

- FC 160 COLD WATER SUPPLY FAUCET / WALL TAP/SINK
- 160 COLD WATER SUPPLY TO CISTERN
- GV GATE VALVE
- RISE IN WALL
- DROP IN WALL
- 320 COLD WATER SUPPLY PIPES RUNNING UNDERGROUND
- 250 COLD WATER SUPPLY PIPES RUNNING IN WALLS
- 250 COLD WATER SUPPLY PIPES RUNNING UNDERGROUND
- 250 COLD WATER SUPPLY PIPES RUNNING ABOVE FALSE CEILING
- FLOOR DRAIN
- FLOOR GULLY
- 1100 SOIL PIPE (CPVC PIPE)
- 820 WASTE PIPE (CPVC PIPE)
- 400 WASTE PIPE (CPVC PIPE)
- 500 WASTE PIPE (CPVC PIPE)
- 820 MANHOLE VENT PIPE (CPVC PIPE)
- BOTTLE TRAP

NOTES:-

-ALL COLD WATER PIPES SHOULD BE CPVC



FIRST FLOOR DRAINAGE LAYOUT

SCALE 1:100



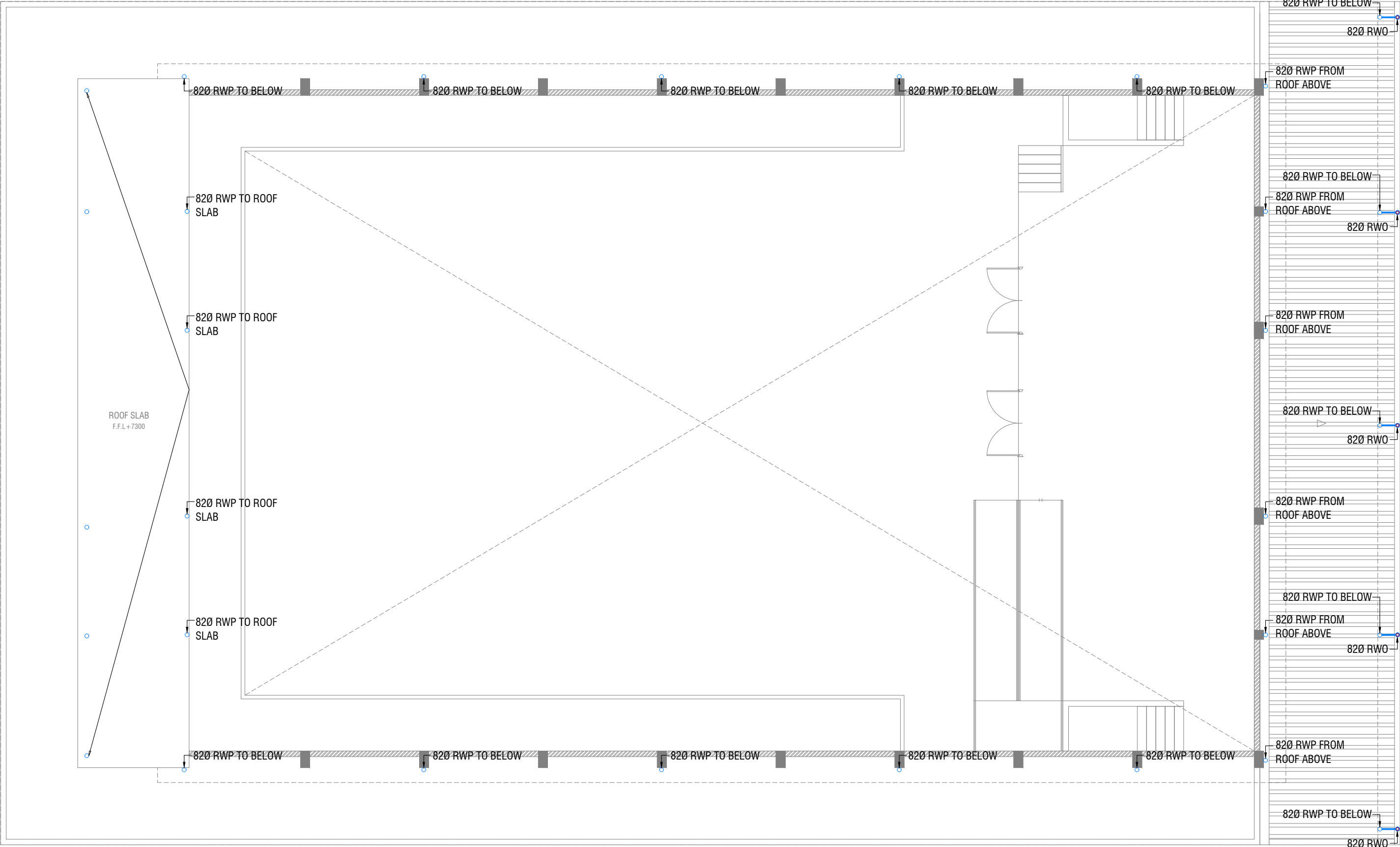
Rev no	Date
1	2017/01/12
2	2017/01/12
3	2017/01/12
4	2017/01/12
5	2017/01/12
6	2017/01/12
7	2017/01/12
8	2017/01/12
9	2017/01/12
10	2017/01/12
11	2017/01/12
12	2017/01/12
13	2017/01/12
14	2017/01/12
15	2017/01/12
16	2017/01/12
17	2017/01/12
18	2017/01/12
19	2017/01/12
20	2017/01/12
21	2017/01/12
22	2017/01/12
23	2017/01/12
24	2017/01/12
25	2017/01/12
26	2017/01/12
27	2017/01/12
28	2017/01/12
29	2017/01/12
30	2017/01/12
31	2017/01/12
32	2017/01/12
33	2017/01/12
34	2017/01/12
35	2017/01/12
36	2017/01/12
37	2017/01/12
38	2017/01/12
39	2017/01/12
40	2017/01/12
41	2017/01/12
42	2017/01/12
43	2017/01/12
44	2017/01/12
45	2017/01/12
46	2017/01/12
47	2017/01/12
48	2017/01/12
49	2017/01/12
50	2017/01/12
51	2017/01/12
52	2017/01/12
53	2017/01/12
54	2017/01/12
55	2017/01/12
56	2017/01/12
57	2017/01/12
58	2017/01/12
59	2017/01/12
60	2017/01/12
61	2017/01/12
62	2017/01/12
63	2017/01/12
64	2017/01/12
65	2017/01/12
66	2017/01/12
67	2017/01/12
68	2017/01/12
69	2017/01/12
70	2017/01/12
71	2017/01/12
72	2017/01/12
73	2017/01/12
74	2017/01/12
75	2017/01/12
76	2017/01/12
77	2017/01/12
78	2017/01/12
79	2017/01/12
80	2017/01/12
81	2017/01/12
82	2017/01/12
83	2017/01/12
84	2017/01/12
85	2017/01/12
86	2017/01/12
87	2017/01/12
88	2017/01/12
89	2017/01/12
90	2017/01/12
91	2017/01/12
92	2017/01/12
93	2017/01/12
94	2017/01/12
95	2017/01/12
96	2017/01/12
97	2017/01/12
98	2017/01/12
99	2017/01/12
100	2017/01/12



RIYAN PRIVATE LIMITED
t: +963215049 f: +963210776
e: info@riyan.com.mv
www.riyan.com.mv
3rd floor, H. Azam, Ameremomogu, Male'

Title: 1st Floor
Drainage Layout
Page:DR - 02/04

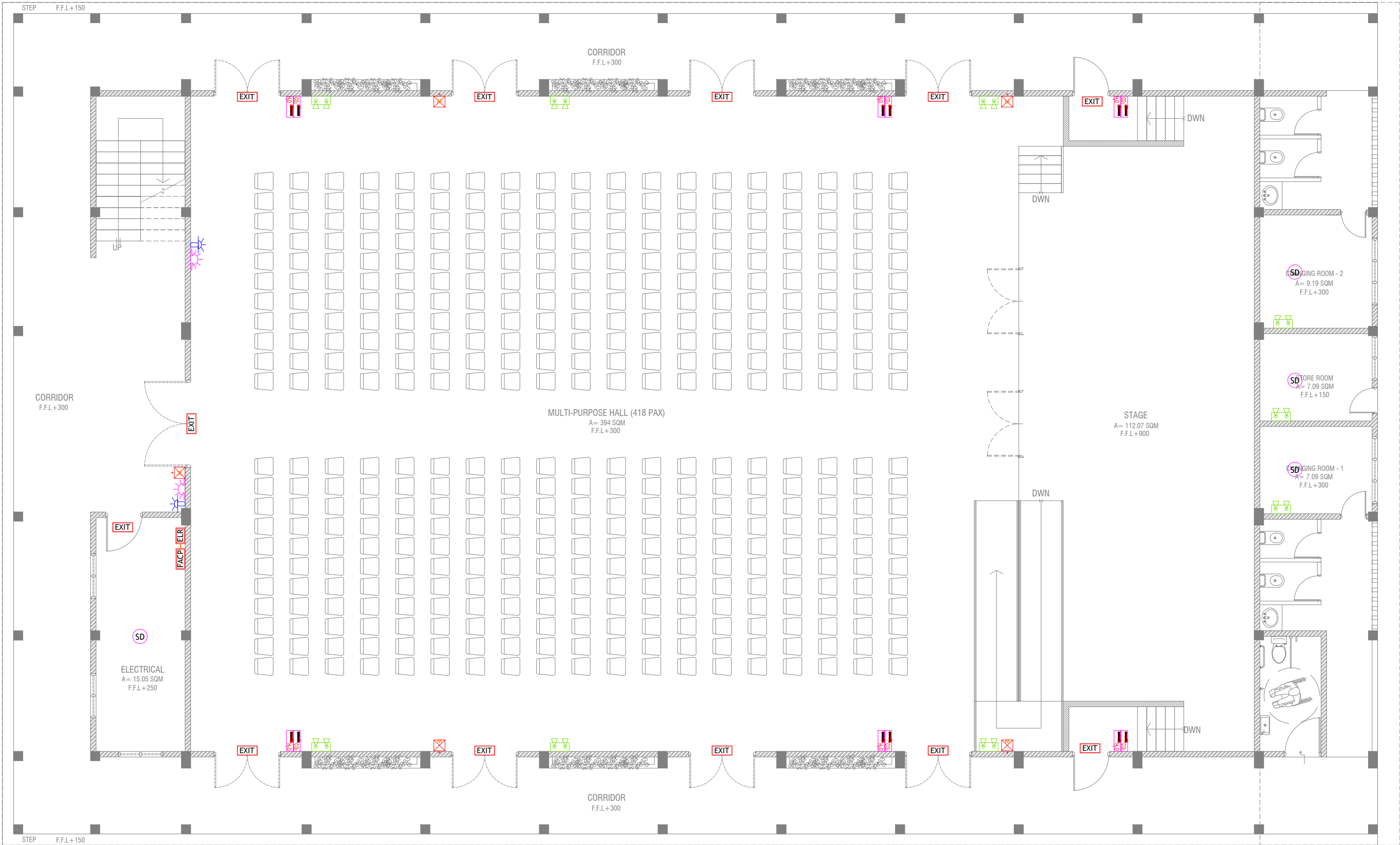
The contents of these drawings remain as a property of Riyan Private Limited. Any use other than those expressly stated is a violation of this copyright.



ROOF PLAN - 1 DRAINAGE LAYOUT

SCALE 1:100





GROUND FLOOR FDP LAYOUT

SCALE 1:100



LEGEND	
SD	SMOKE DETECTOR
HD	HEAT DETECTOR
EXIT	EXIT SIGN
EM	EMERGENCY LIGHT
	CO ₂ EXTINGUISHER (LOAD: 2KG) IN POLYCARBONATE ENCLOSURE(TYP.)
	WET CHEMICAL FIRE EXTINGUISHER (LOAD 7.2KG)
	H ₂ O EXTINGUISHER (LOAD: 9L) IN POLYCARBONATE ENCLOSURE(TYP.)
	END OF LINE RESISTANCE
	FIRE ALARM CONTROL PANEL
	MANUAL CALL POINT (RESETTABLE)
	BEACON
	SOUNDER/BELL (85 DB)

ALL FIRE RATED DOOR SHOULD COME WITH PACKING (EXPANSION SEAL TRAP)

1. ALL PIPES SHOULD BE GALVANIZED, SCHEDULE 40.
2. ALL PIPE SHALL BE PAINTED IN RED AS PER REGULATION.
3. ALL SUPPORT/BRAKETS SHALL BE HOT DIPPED GALVANIZED TO 100MM.
4. ALL FIRE EXTINGUISHER INSIDE CABINETS. (CABINET SHOULD BE PROVIDED)

R. Alifushi School Hall
Client: Ministry of Education

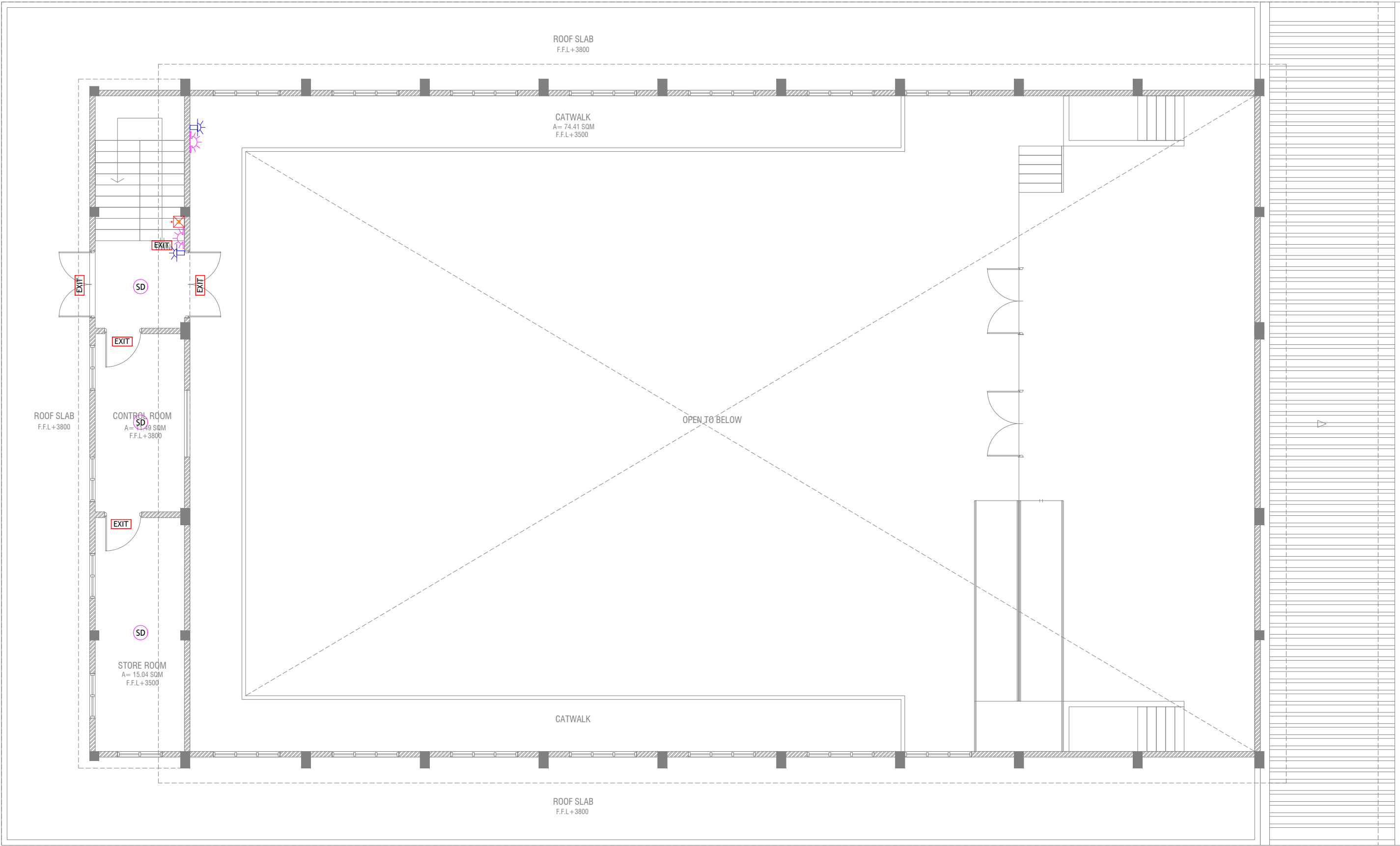
Rev no	Date
1	2017/01/02
2	2017/01/02
3	2017/01/02
4	2017/01/02
5	2017/01/02
6	2017/01/02
7	2017/01/02
8	2017/01/02
9	2017/01/02
10	2017/01/02
11	2017/01/02
12	2017/01/02
13	2017/01/02
14	2017/01/02
15	2017/01/02
16	2017/01/02
17	2017/01/02
18	2017/01/02
19	2017/01/02
20	2017/01/02
21	2017/01/02
22	2017/01/02
23	2017/01/02
24	2017/01/02
25	2017/01/02
26	2017/01/02
27	2017/01/02
28	2017/01/02
29	2017/01/02
30	2017/01/02
31	2017/01/02
32	2017/01/02
33	2017/01/02
34	2017/01/02
35	2017/01/02
36	2017/01/02
37	2017/01/02
38	2017/01/02
39	2017/01/02
40	2017/01/02
41	2017/01/02
42	2017/01/02
43	2017/01/02
44	2017/01/02
45	2017/01/02
46	2017/01/02
47	2017/01/02
48	2017/01/02
49	2017/01/02
50	2017/01/02
51	2017/01/02
52	2017/01/02
53	2017/01/02
54	2017/01/02
55	2017/01/02
56	2017/01/02
57	2017/01/02
58	2017/01/02
59	2017/01/02
60	2017/01/02
61	2017/01/02
62	2017/01/02
63	2017/01/02
64	2017/01/02
65	2017/01/02
66	2017/01/02
67	2017/01/02
68	2017/01/02
69	2017/01/02
70	2017/01/02
71	2017/01/02
72	2017/01/02
73	2017/01/02
74	2017/01/02
75	2017/01/02
76	2017/01/02
77	2017/01/02
78	2017/01/02
79	2017/01/02
80	2017/01/02
81	2017/01/02
82	2017/01/02
83	2017/01/02
84	2017/01/02
85	2017/01/02
86	2017/01/02
87	2017/01/02
88	2017/01/02
89	2017/01/02
90	2017/01/02
91	2017/01/02
92	2017/01/02
93	2017/01/02
94	2017/01/02
95	2017/01/02
96	2017/01/02
97	2017/01/02
98	2017/01/02
99	2017/01/02
100	2017/01/02



RIYAN PRIVATE LIMITED
t: +960325049 f: +960330776
e: info@riyan.com.mv
www.riyan.com.mv
3rd floor, H. Azam, Ammenemogai, Male'

Title: Ground Floor
FDP Layout
Page#DP - 01/02

The contents of these drawings remain as a property of Riyan Private Limited. Any use other than those expressly stated is a violation of this copyright.



FIRST FLOOR FDP LAYOUT

SCALE 1:100



LEGEND

- SD SMOKE DETECTOR
- HD HEAT DETECTOR
- EXIT EXIT SIGN
- EM EMERGENCY LIGHT

- CO₂ EXTINGUISHER (LOAD: 2KG) IN POLYCARBONATE ENCLOSURE(TYP.)
- WET CHEMICAL FIRE EXTINGUISHER (LOAD 7.2KG)
- H₂O EXTINGUISHER (LOAD: 9L) IN POLYCARBONATE ENCLOSURE(TYP.)

- ELR END OF LINE RESISTANCE
- FACP FIRE ALARM CONTROL PANEL
- MANUAL CALL POINT (RESETTABLE)
- BEACON
- SOUNDER/BELL (85 DB)

ALL FIRE RATED DOOR SHOULD COME WITH PACKING (EXPANSION SEAL TRAP)

1. ALL PIPES SHOULD BE GALVANIZED SCHEDULE 40.
2. ALL PIPE SHALL BE PAINTED IN RED AS PER REGULATION.
3. ALL SUPPORT(BRACKET) SHALL BE HOT DIPPED GALVANIZED TO 1000AM.
4. ALL FIRE EXTINGUISHER INSIDE CABINETS. (CABINET SHOULD BE PROVIDED)

R.Alifushi School Hall
Client: Ministry of Education

Project Number: R/2017/012
Date: February 2019
Architect: Hazana Amir
Engineer: Ahmed Zuhair Zakiem
Services: Architectural
Interior :-



RIYAN PRIVATE LIMITED

t: +960325049 f: +960330776
e: info@riyan.com.mv
www.riyan.com.mv
3rd floor, H. Azam, Amerememogu, Malé

Title: 1st Floor
FDP Layout
Page: FDP - 02/02

The contents of these drawings remain as a property of Riyan Private Limited. Any use other than those expressly stated is a violation of this copyright.