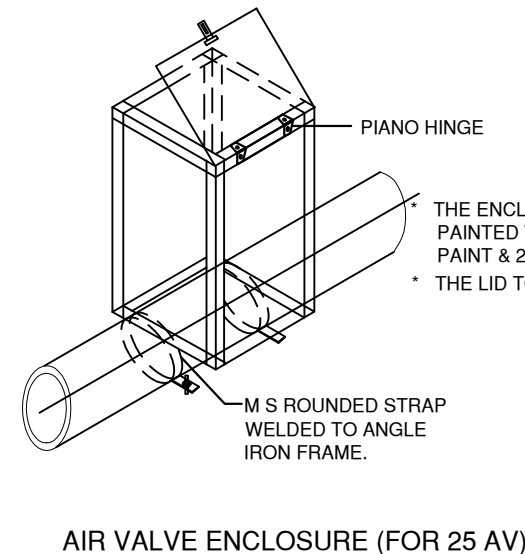
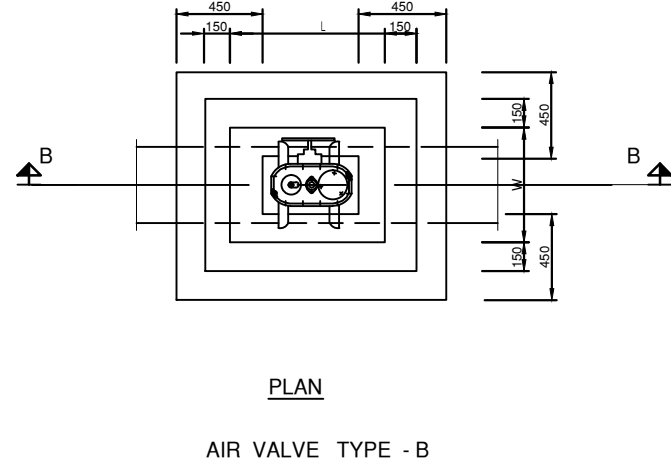
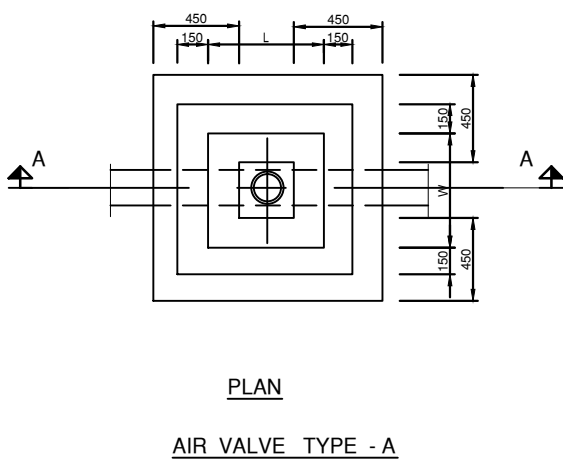


TYPICAL REINFORCEMENT DETAILS

NOTES

- CHAMBER SIZE GIVEN IN THE DRG. ARE THE MINIMUM.
- CHAMBER SIZE AND THE MINIMUM EARTH COVER DETERMINED ACCORDING TO THE DIMENSIONS SHOWN IN TABLE THESE SIZES SHALL BE REVISED WHEN OTHER PRODUCTS ARE USED.
- MANHOLE COVER SHALL BE OF HINGED, HEAVY DUTY (CLASS D 400) VENTILATED TYPE WITH 600 DIA. MINIMUM CLEAR OPENING.
- MANHOLE FRAME SHALL BE FIRMLY FIXED TO THE CHAMBER WITH 4 NOS. RAG BOLTS OR SIMILAR MANNER.
- ALL INSITU CONCRETE, SUPPORTS AND THRUST RESTRAINTS SHALL BE GRADE 20 UNLESS OTHERWISE STATED.



SINGLE ORIFICE AIR VALVE FOR DI, PVC AND PE PIPES UP TO 160

SIZE OF AIR VALVE ASSEMBLY

TYPE	DIAMETER OF MAIN PIPE	INTERNAL DIMENSION			MIN. COVER
		L	W	H	
A	UP TO 280 PVC/ PE	600	600	600	1200
B	250 - 350 DI	800	600	600	1200
B	400 - 600 DI	800	600	600	1200

DOUBLE ORIFICE AIR VALVE FOR DI/PVC/PE PIPES ABOVE THE 160

SIZE OF AIR VALVE ASSEMBLY

DIAMETER OF MAIN PIPE	SIZE OF AIR VALVE (PN 16)	SIZE OF ISOLATING SLUICE VALVE (HAND WHEEL OPERATED)	SIZE OF FLANGED BRANCH OFF	LENGTH OF BRANCH PIECE
UP TO 160 PVC/ PE	25 SINGLE ORIFICE AIR VALVE	25 ISOLATING COCK	-	-
225&280 PVC/PE	80 DOUBLE ORIFICE AIR VALVE	80 D/F SLUICE VALVE	80	80 DI, D/F 200 LONG



CLIENT:
MINISTRY OF ENVIRONMENT
AND ENERGY

CONSULTANCY SERVICES FOR DESIGN OF WATER SUPPLY FACILITIES IN Ha.HORAFUSHI, Hdh.HANIMAADHOO, Sh.MILANDHOO, R.UNGOOFARU, Lh.NAIFARU, Dh.KUDAHUVADHOO, Th.GURADHOO AND Ga.VILLINGILI, MALDIVES

DESIGN
ENGINEER

DRAWN
DATE

CHECKED
DESIGN CHIEF

APPROVED
DRG.NO: MILANDHOO/STD/05
SCALE: NOT TO SCALE

SL.NO
DRIVING NO

DESCRIPTION



GREENTECH CONSULTANTS (Pvt.) Ltd IN ASSOCIATION WITH
DEVELOPMENT COLLABORATION PARTNERSHIP (Pvt.) Ltd MALDIVES
AND OPTIMUM SOLOUTIONS (Pvt) Ltd, MALDIVES

TITLE:

AIR VALVE CHAMBERS
DISTRIBUTION NETWORK
MILANDHOO