



**MINISTRY OF ENVIRONMENT AND ENERGY**

**REPUBLIC OF MALDIVES**

**TENDER DRAWINGS**

**01 MARCH 2016**

**PROJECT :**

**PROVISION OF WATER SUPPLY  
FACILITIES IN B. EYDHAFUSHI,  
MALDIVES**

**CONSULTANT:**



Al-Habshi  
Consultant

**Al-Habshi Consultants Office**

Tel.: 2430103 / 2433131 - Fax : 2431136  
P.O.Box 27154 Safat 13132 - Kuwait

## LIST OF DRAWINGS

DWG. NOS	DRAWING TITLES
<b>GENERAL</b>	
BE-WS-100	LIST OF DRAWINGS
<b>WATER SUPPLY</b>	
BE-WS-101 (1 OF 2)	WATER SUPPLY LAYOUT-PART-A
BE-WS-101 (2 OF 2)	WATER SUPPLY LAYOUT-PART-B
BE-WS-102	RAIN WATER COLLECTION LAYOUT
BE-WS-103 (1 OF 2)	BRINE OUTFALL LAYOUT & SECTION
BE-WS-103 (2 OF 2)	BRINE OUTFALL DETAILS
BE-WS-104	INTEGRATED WATER SUPPLY NETWORK SCHEMATIC
BE-WS-105	RO PLANT LAYOUT
BE-WS-106	BRINE PUMP DETAILS
BE-WS-107	TUBE WELL DETAIL
BE-WS-109 (1 OF 4)	TYPICAL DETAILS-WATER SUPPLY - (SHEET-01)
BE-WS-109 (2 OF 4)	TYPICAL DETAILS-WATER SUPPLY - (SHEET-02)
BE-WS-109 (3 OF 4)	TYPICAL DETAILS-WATER SUPPLY - (SHEET-03)
BE-WS-109 (4 OF 4)	TYPICAL DETAILS-WATER SUPPLY - (SHEET-04)
BE-WS-110	TYPICAL PIPE BENDING DETAILS
BE-WS-111	GRP WATER TANK
BE-WS-113	RO PLANT ADMIN BUILDING - FLOOR AND ROOF PLAN
BE-WS-114	RO PLANT ADMIN BUILDING - ELEVATIONS AND SECTION
BE-WS-115	RO PLANT ADMIN BUILDING - DOOR,WINDOW & EXHAUST FAN DETAILS
BE-WS-116	RO PLANT ADMIN BUILDING - SEWERAGE AND WATER SUPPLY LAYOUT
BE-WS-117	RO PLANT ADMIN BUILDING - STRUCTURAL DRAWINGS
BE-WS-119	REVERSE OSMOSIS UNIT STRUCTURAL PLANS
BE-WS-120	REVERSE OSMOSIS UNIT STRUCTURAL DETAIL & SCHEDULES
BE-WS-121	REVERSE OSMOSIS UNIT DETAILS

## LIST OF DRAWINGS


DWG. NOS	DRAWING TITLES
<b>ELECTRICAL</b>	
BE-EL-100	RO PLANT ADMIN BUILDING ELECTRICAL LAYOUT
BE-EL-101	RO PLANT BUILDING ELECTRICAL LAYOUT
BE-EL-102	RO PLANT ELECTRICAL LAYOUT
BE-EL-103	SCHEMATIC DIAGRAM FOR RO PLANT
BE-EL-104	ELECTRICAL DB SCHEDULE
BE-EL-105	ELECTRICAL TYPICAL DETAILS

### REFERENCE DRAWINGS

SL.No	DRAWING No.	DESCRIPTION

REV.	DATE	DESCRIPTION	DRAWN	CHKD.	APPRD.
0	08.12.15	DETAILED DESIGN SUBMISSION	SR	MP	MA
0	22.10.15	CONCEPT DESIGN SUBMISSION	SR	MP	MA

### REVISION

CLIENT  

**MINISTRY OF ENVIRONMENT & ENERGY**  
 REPUBLIC OF MALDIVES

CONSULTANT:  

**ACO** دار الهندسة والبناء  
**Al Habshi Consultants Office**

PROJECT:  
 Consultancy Services for Survey, Design of Water supply Facilities in Tha.Vilifushi, F.Nilandhoo, B.Eydhafushi and Adh. Hanyaameedhoo, Maldives

DRAWING TITLE:  
 LIST OF DRAWINGS  
 B.EYDHAFUSHI ISLAND

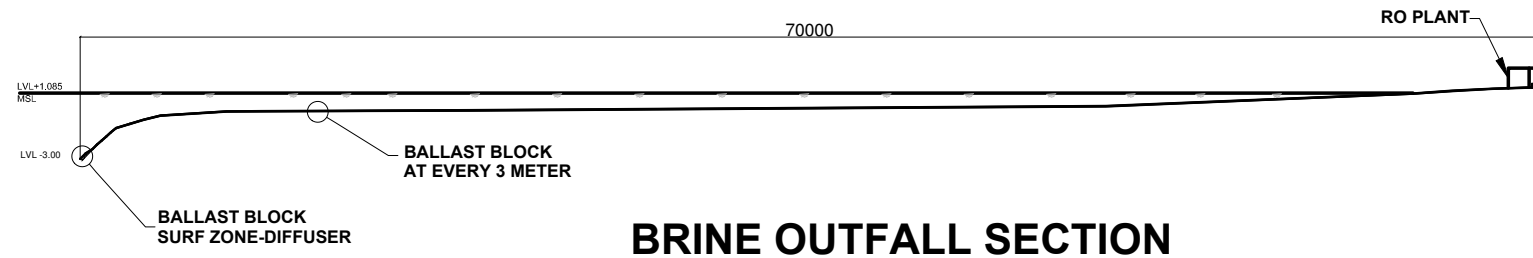
DESIGNED	DRAWN	CHECKED	APPROVED	SCALE	DATE
SK	JP	MP	MA	N.T.S	22.10.15
PROJECT No.	SHEET No.	DRAWING No.		BE-WS-100	
K-627	1 OF 1				
REV. No.	0				

# WATER SUPPLY DRAWINGS





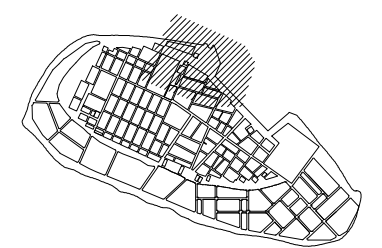




## BRINE OUTFALL SECTION



- NOTES:-**
1. ALL DIMENSIONS SHOWN ARE IN MILLIMETERS (MM), UNLESS OTHERWISE SHOWN
  2. ALL LEVELS SHOWN ARE IN METERS. ALL LEVELS SHOWN ARE FROM MEAN SEA LEVEL
  3. THIS DRAWING TO BE READ IN CONJUNCTION WITH ALL OTHER RELEVANT DRAWINGS, GENERAL NOTES AND SPECIFICATIONS.



**REFERENCE DRAWINGS**

SL.No	DRAWING No.	DESCRIPTION

REV.	DATE	DESCRIPTION	DRAWN	CHKD.	APPRD.

**REVISION**

**CLIENT**  
**MINISTRY OF ENVIRONMENT & ENERGY**  
 REPUBLIC OF MALDIVES

**CONSULTANT:**  
**Al Habshi Consultants Office**

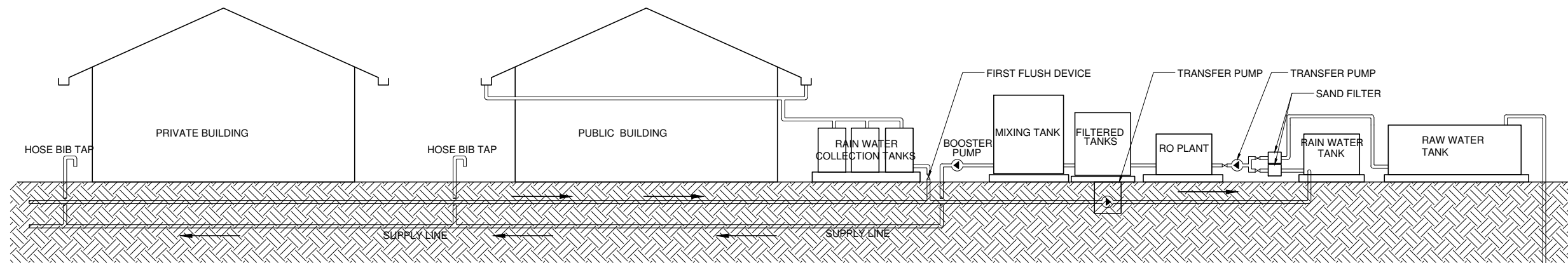
**PROJECT:**  
 Consultancy Services for Survey, Design of Water supply Facilities in Tha. Vilifushi, F. Nilandhoo, B. Eydhafushi and Adh. Hanyaameedhoo, Maldives

**DRAWING TITLE:**  
 BRINE OUTFALL LAYOUT & SECTION  
 B. EYDHAFUSHI ISLAND

DESIGNED	DRAWN	CHECKED	APPROVED	SCALE	DATE
SK	JP	MP	MA	1 : 2500	18.10.'15
PROJECT No. SHEET No.		DRAWING No.			
K-627 1 OF 2		BE-WS-103			
REV. No.		0			







## INTEGRATED WATER SUPPLY NETWORK

### ABBREVIATIONS

SF	-SAND FILTER
RO	-REVERSE OSMOSIS TANK
HBT	-HOSE BIB TAP
RWS	-RAIN WATER SUPPLY
WS	-WATER SUPPLY
TP	-TRANSFER PUMP
RWCP	-RAINWATER COLLECTION PIPE
TP	-TRANSFER PUMP
BP	-BOOSTER PUMP

### REFERENCE DRAWINGS

SL.No	DRAWING No.	DESCRIPTION

REV.	DATE	DESCRIPTION	DRAWN	CHKD.	APPRD.
0	08.12.15	DETAILED DESIGN SUBMISSION	SR	MP	MA
0	22.10.15	CONCEPT DESIGN SUBMISSION	SR	MP	MA

### REVISION

### CLIENT

**MINISTRY OF ENVIRONMENT & ENERGY**  
REPUBLIC OF MALDIVES

### CONSULTANT:

**ACO** دار الهندسة والعمارة  
**Al Habshi Consultants Office**

### PROJECT:

Consultancy Services for Survey, Design of Water supply Facilities in Tha.Vilifushi, F.Nilandhoo, B.Eydhafushi and Adh. Hanyaameedhoo, Maldives

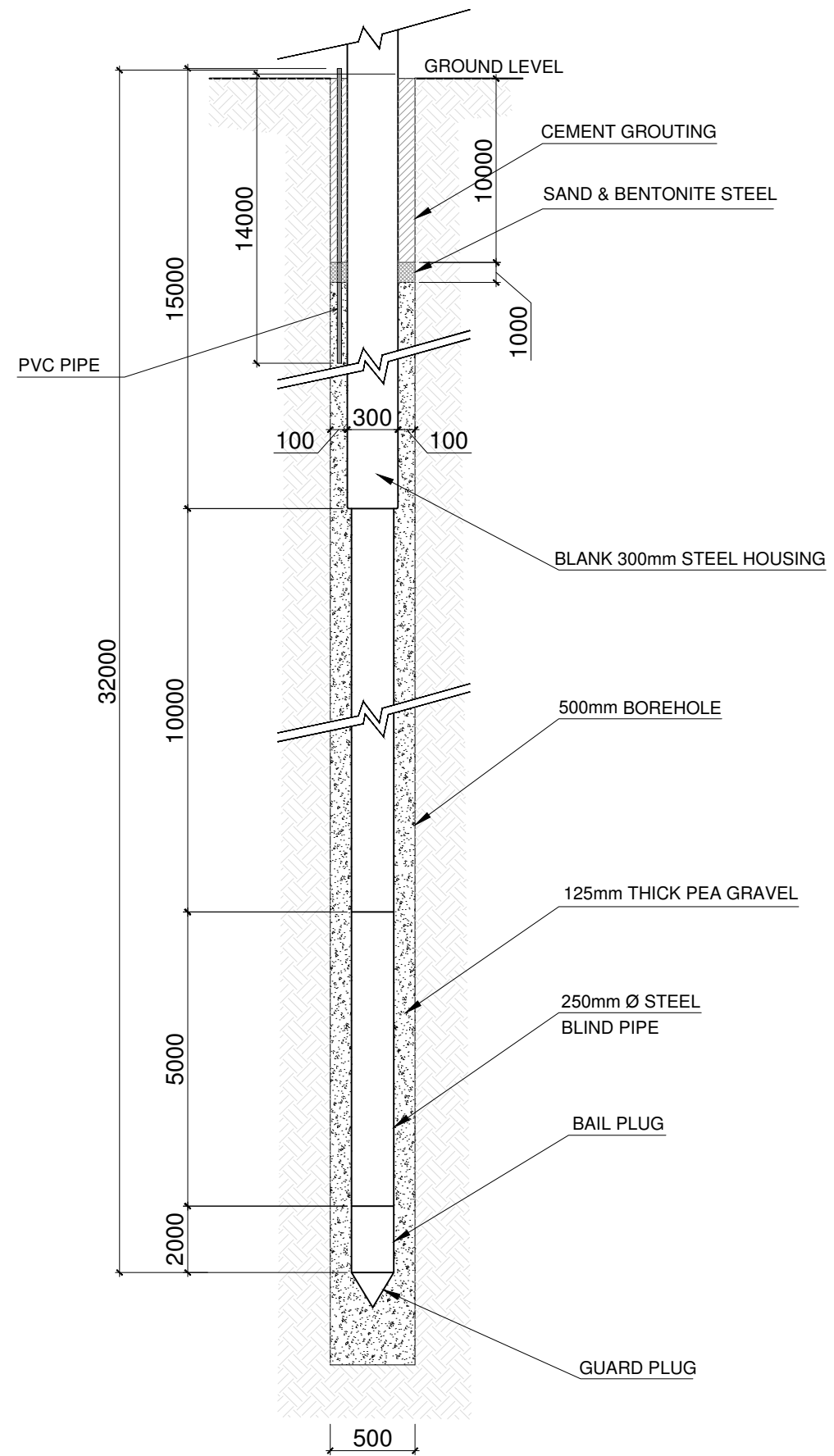
### DRAWING TITLE:

INTEGRATED WATER SUPPLY NETWORK  
SCHEMATIC-B.EYDHAFUSHI ISLAND

DESIGNED	DRAWN	CHECKED	APPROVED	SCALE	DATE
SK	JP	MP	MA	N.T.S	08.12.15
PROJECT No.	SHEET No.	DRAWING No.			
K-627	1 OF 1	BE-WS-104			
REV. No.	0				







**TUBE WELL DETAIL**

**NOTES:-**  
 1. ALL DIMENSIONS SHOWN ARE IN MILLIMETERS (MM), UNLESS OTHERWISE SHOWN  
 2. ALL LEVELS SHOWN ARE IN METERS. ALL LEVELS SHOWN ARE FROM MEAN SEA LEVEL  
 3. THIS DRAWING TO BE READ IN CONJUNCTION WITH ALL OTHER RELEVANT DRAWINGS, GENERAL NOTES AND SPECIFICATIONS.

REFERENCE DRAWINGS		
SL.No	DRAWING No.	DESCRIPTION

REV.	DATE	DESCRIPTION	DRAWN	CHKD.	APPRD.
0	08.12.15	DETAILED DESIGN SUBMISSION	SR	MP	MA
0	22.10.15	CONCEPT DESIGN SUBMISSION	SR	MP	MA

**CLIENT**  
 MINISTRY OF ENVIRONMENT & ENERGY  
 REPUBLIC OF MALDIVES

**CONSULTANT:**  
**ACO** دار الهندسة والبناء  
**Al Habshi Consultants Office**

**PROJECT:**  
 Consultancy Services for Survey, Design of Water supply Facilities in Tha.Vilifushi, F.Nilandhoo, B.Eydhafushi and Adh. Hanyaameedhoo, Maldives

**DRAWING TITLE:**  
 TUBE WELL DETAIL  
 B.EYDHAFUSHI ISLAND

DESIGNED	DRAWN	CHECKED	APPROVED	SCALE	DATE
SK	JP	MP	MA	N.T.S	08.12.15
PROJECT No.	SHEET No.	DRAWING No.			
K-627	1 OF 1			BE-WS-107	
REV. No.	0				





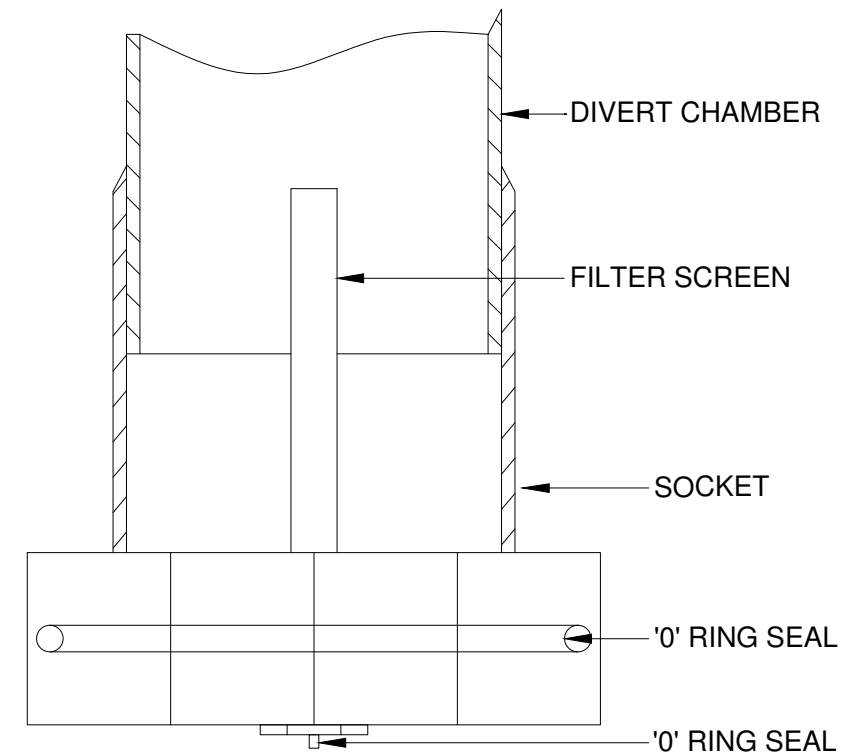
WATER FLOW FROM ROOF

TEE JUNCTION

BALL SEAT  
SEALING BALL  
DIVERTER CHAMBER

DETAIL-A

TO TANK



DETAIL-A

WATER FLOW FROM ROOF

TO DIVERTER CHAMBER

TO TANK

TYPICAL FIRST FLUSH DIVERTER

REFERENCE DRAWINGS

SL.No	DRAWING No.	DESCRIPTION

REV.	DATE	DESCRIPTION	DRAWN	CHKD.	APPRD.
0	08.12.15	DETAILED DESIGN SUBMISSION	SR	MP	MA
0	22.10.15	CONCEPT DESIGN SUBMISSION	SR	MP	MA

REVISION

CLIENT  
**MINISTRY OF ENVIRONMENT & ENERGY**  
REPUBLIC OF MALDIVES

CONSULTANT:  
**ACO** دار الهندسة والبناء  
**Al Habshi Consultants Office**

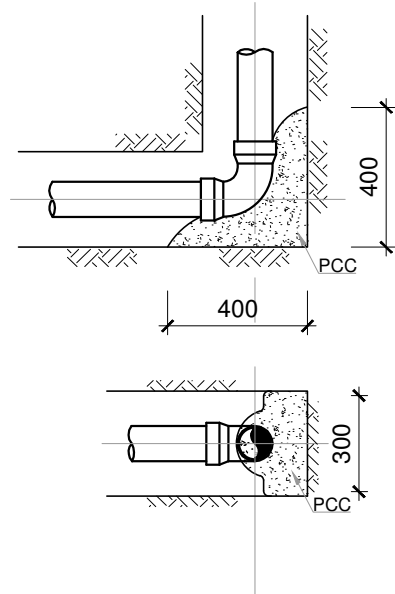
PROJECT:  
Consultancy Services for Survey, Design of Water supply Facilities in Tha.Vilifushi, F.Nilandhoo, B.Eydhafushi and Adh. Hanyaameedhoo, Maldives

DRAWING TITLE:  
TYPICAL DETAILS-WATER SUPPLY - (SHEET-03)  
B.EYDHAFUSHI ISLAND

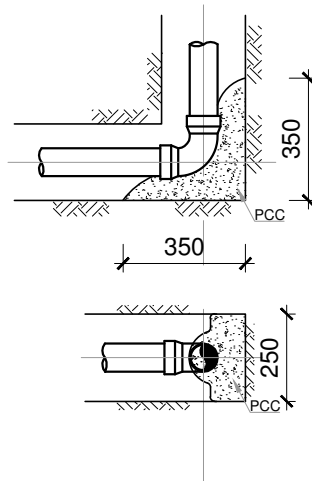
DESIGNED	DRAWN	CHECKED	APPROVED	SCALE	DATE
SK	SR	MP	MA	AS SHOWN	08-12-15
PROJECT No.	SHEET No.	DRAWING No.			
K-627	3 OF 4			BE-WS-109	
REV. No.	0				



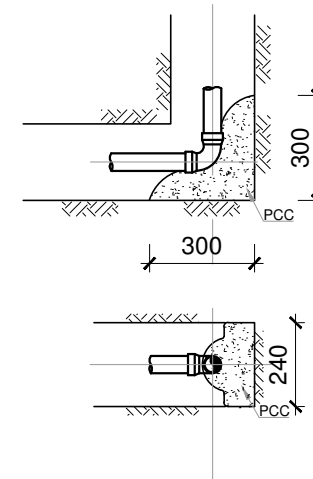




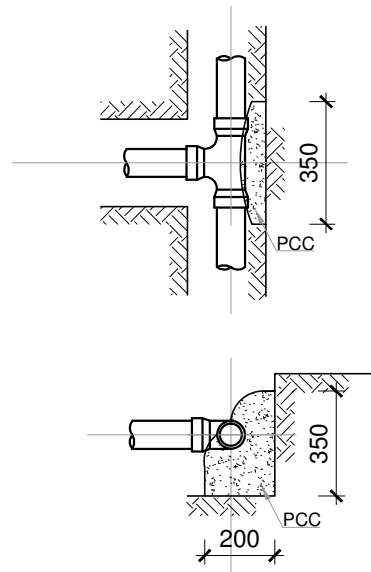
**90° HORIZONTAL BEND (BTM)  
FOR Ø100 WS PIPE**



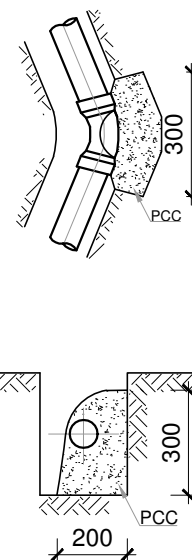
**90° HORIZONTAL BEND (BTM)  
FOR Ø80 WS PIPE**



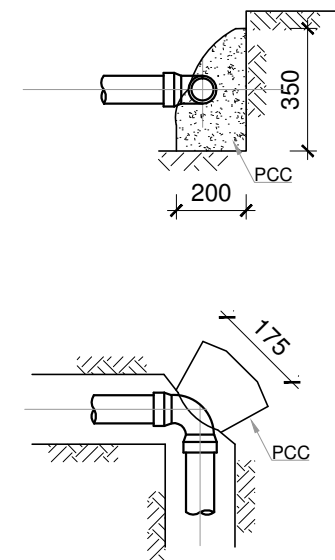
**90° VERTICAL BEND (BTM)  
FOR Ø50 WS PIPE**



**ANGLE BRANCH & TEE  
FOR Ø80 WS PIPE**



**HORIZONTAL BEND  
FOR Ø80 WS PIPE**




**90° VERTICAL BEND (BTM)  
FOR Ø80 WS PIPE**

REFERENCE DRAWINGS		
SL.No	DRAWING No.	DESCRIPTION

REV.	DATE	DESCRIPTION	DRAWN	CHKD.	APPRD.
0	08.12.15	DETAILED DESIGN SUBMISSION	SR	MP	MA
0	22.10.15	CONCEPT DESIGN SUBMISSION	SR	MP	MA

**REVISION**

**CLIENT**  

**MINISTRY OF ENVIRONMENT & ENERGY**  
 REPUBLIC OF MALDIVES

**CONSULTANT:**  

**Al Habshi Consultants Office**  
 دار الهندسة والبناء  
 Al Habshi Consultants Office  
 P.O. Box 1154, Male, Maldives  
 Tel: +960 724 1154 | Fax: +960 724 1154 | Email: info@alhabshi.com.mv

**PROJECT:**  
 Consultancy Services for Survey, Design of Water supply Facilities in Tha.Vilifushi, F.Nilandhoo, B.Eydhafushi and Adh. Hanyaameedhoo, Maldives

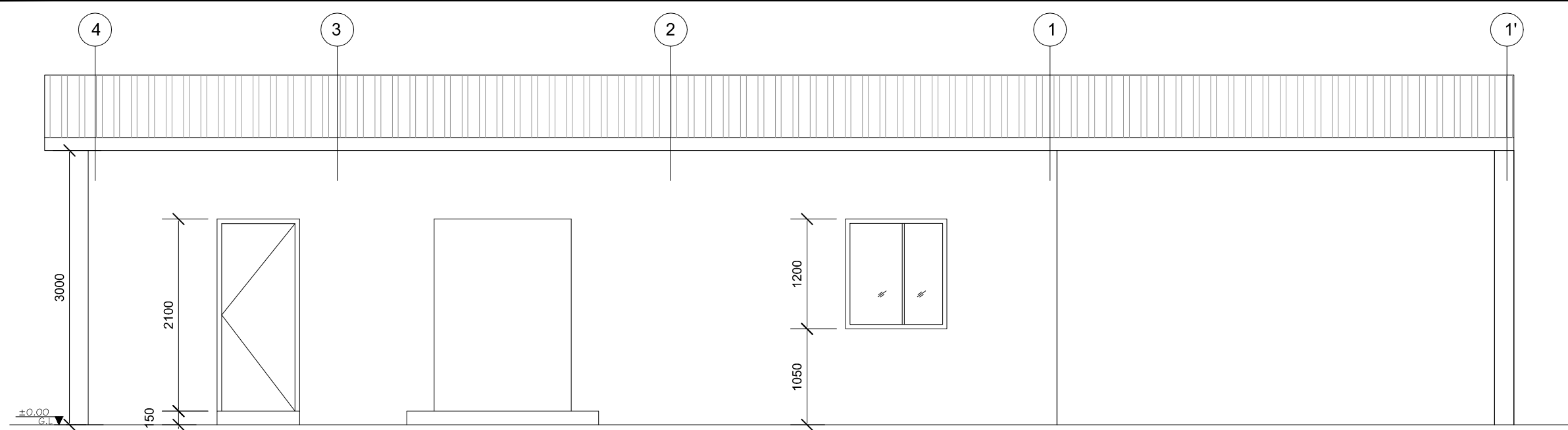
**DRAWING TITLE:**  
 TYPICAL PIPE BENDING DETAILS  
 B.EYDHAFUSHI ISLAND

DESIGNED	DRAWN	CHECKED	APPROVED	SCALE	DATE
SK	SR	MP	MA	AS SHOWN	08-12-15
PROJECT No. SHEET No.		DRAWING No.			
K-627 1 OF 1					
REV. No.					
0					

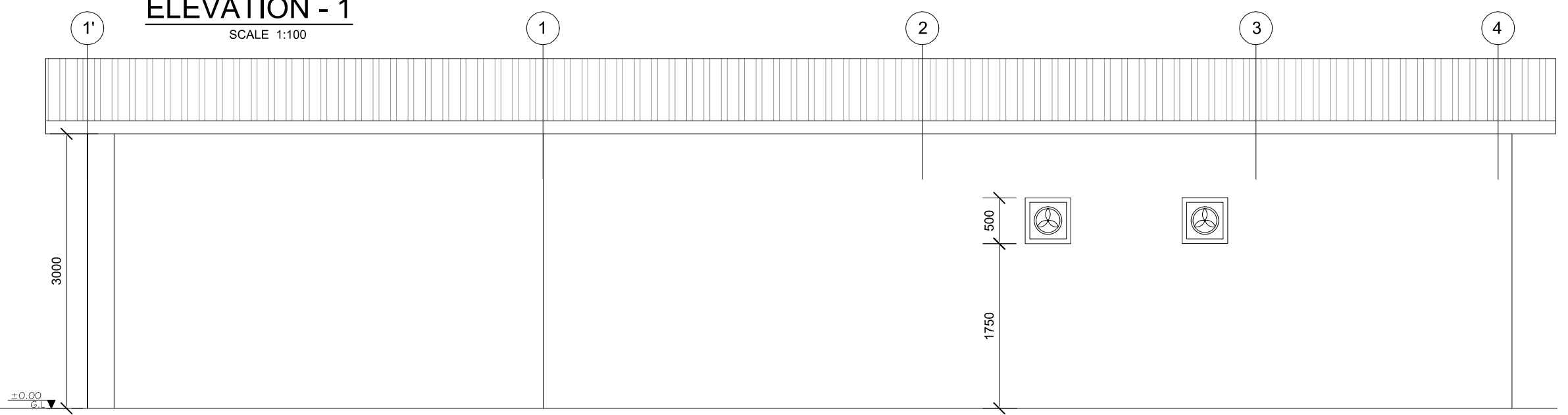
BE-WS-110



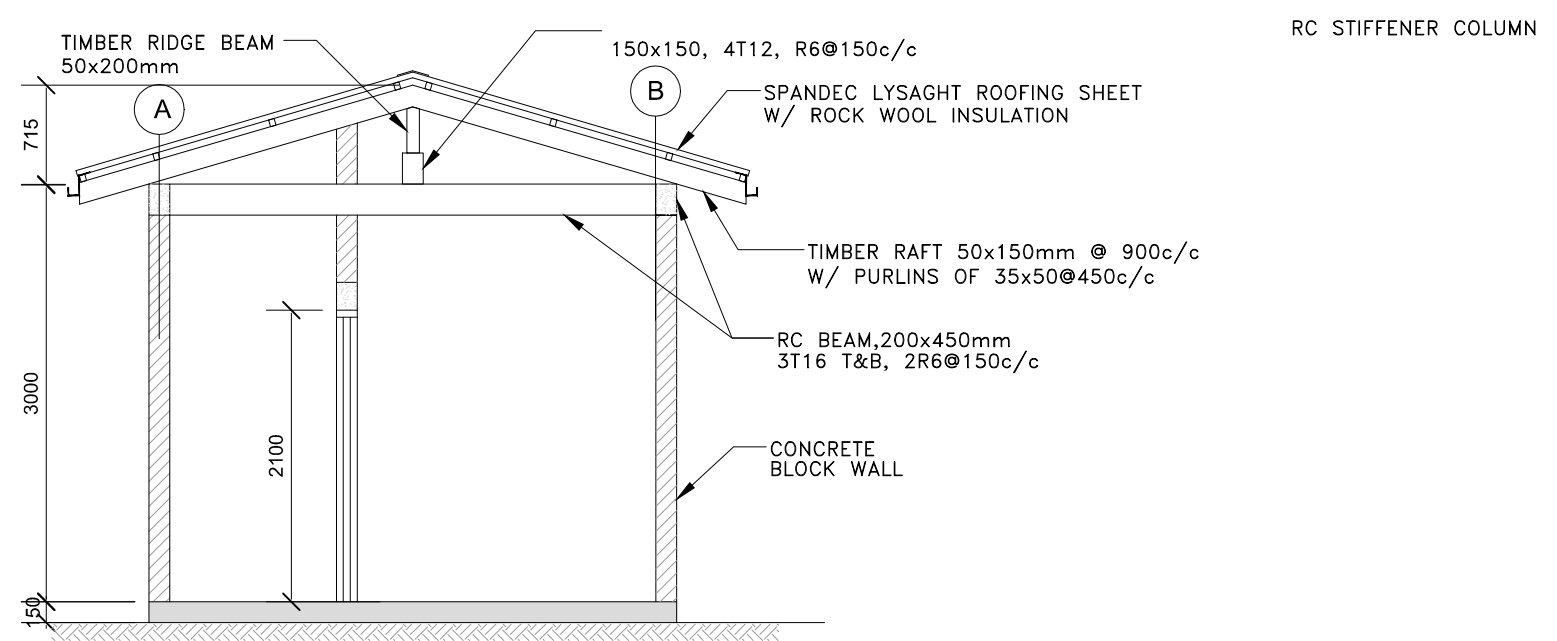




**ELEVATION - 1**  
SCALE 1:100



**ELEVATION - 2**  
SCALE 1:100



**SECTION A-A**

- NOTES:-**
1. ALL DIMENSIONS SHOWN ARE IN MILLIMETERS (MM), UNLESS OTHERWISE SHOWN
  2. ALL LEVELS SHOWN ARE IN METERS. ALL LEVELS SHOWN ARE FROM MEAN SEA LEVEL
  3. THIS DRAWING TO BE READ IN CONJUNCTION WITH ALL OTHER RELEVANT DRAWINGS, GENERAL NOTES AND SPECIFICATIONS.

REFERENCE DRAWINGS		
SL.No	DRAWING No.	DESCRIPTION

REVISION				
REV.	DATE	DESCRIPTION	DRAWN	CHKD./APPRD.

CLIENT  
**MINISTRY OF ENVIRONMENT & ENERGY**  
 REPUBLIC OF MALDIVES

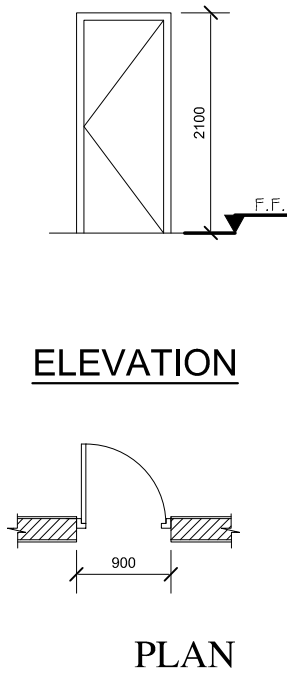
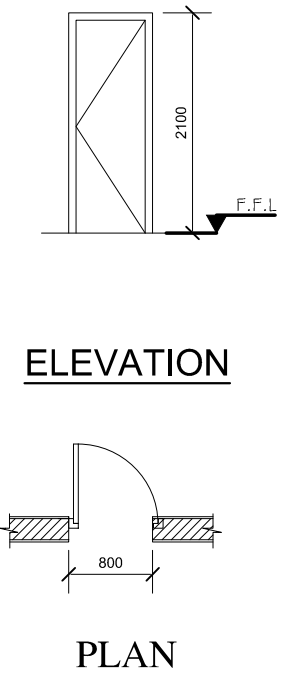
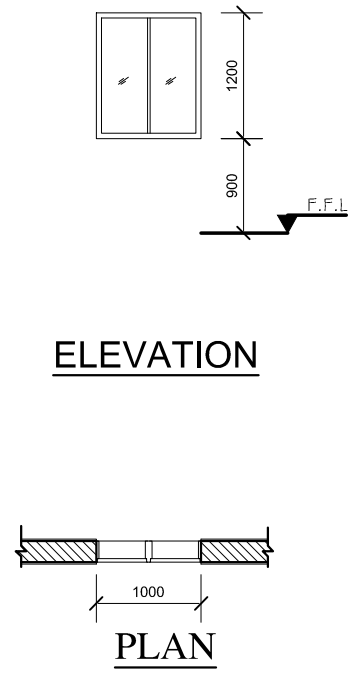
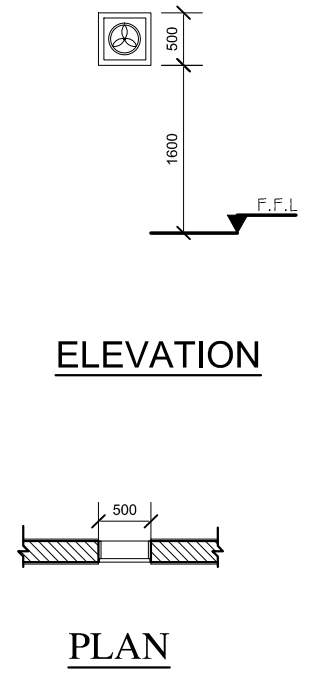
CONSULTANT:  
**ACO** دار الهندسة والعمارة المعمارية  
**Al Habshi Consultants Office**

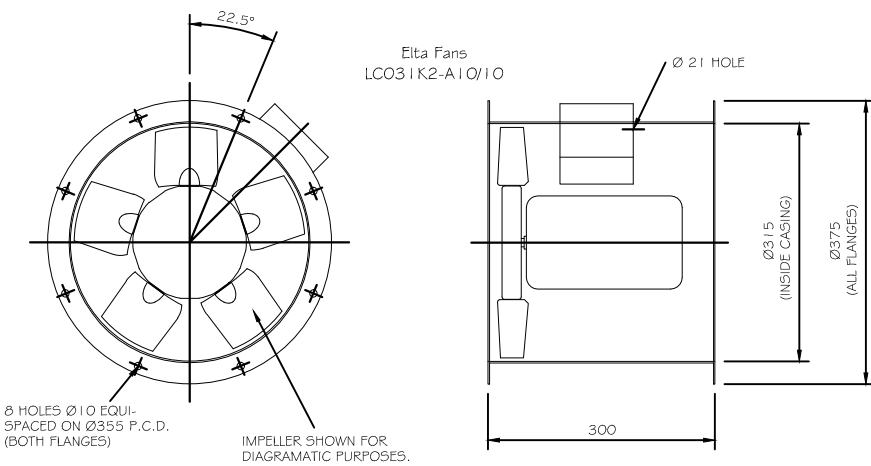
PROJECT:  
 Consultancy Services for Survey, Design of Water supply Facilities in Tha.Vilifushi, F.Nilandhoo, B.Eydhafushi and Adh. Hanyaameedhoo, Maldives

DRAWING TITLE:  
**RO PLANT ADMIN BUILDING ELEVATIONS AND SECTION**

DESIGNED	DRAWN	CHECKED	APPROVED	SCALE	DATE
SK	SR	MP	MA	1:50	08.12.15
PROJECT No.	SHEET No.	DRAWING No.			
K-627	1 OF 1			BE-WS-114	
REV. No.	0				

## DOOR & WINDOW SCHEDULE

 <p><b>ELEVATION</b></p> <p><b>PLAN</b></p>			 <p><b>ELEVATION</b></p> <p><b>PLAN</b></p>			 <p><b>ELEVATION</b></p> <p><b>PLAN</b></p>				 <p><b>ELEVATION</b></p> <p><b>PLAN</b></p>							
<b>D1</b>	WIDTH	HEIGHT	DESCRIPTION	<b>D2</b>	WIDTH	HEIGHT	DESCRIPTION	<b>W1</b>	WIDTH	HEIGHT	SILL HEIGHT	DESCRIPTION	<b>W2</b>	WIDTH	HEIGHT	SILL HEIGHT	DESCRIPTION
	900	2100	WOODEN FRAME & WOODEN PANEL		800	2100	WOODEN FRAME & WOODEN PANEL		1000	1200	900	ALUMINIUM FRAME WITH DOUBLE GLAZED		500	500	1600	ALUMINIUM FRAME WITH GLASS & FAN



**TYP. EXHAUST FAN**

FANS SCHEDULE											
REFERENCE	LOCATION	SERVICE	FLOW RATE	SP	POWER				FAN SPEED	FAN	REMARKS
					CFM	IWG	KW	VOLTS			
EXF-1	LABORATORY	LABORATORY	120	0.5	0.25	230	1	50	1450	AXIAL	
EXF-2	TOILET	TOILET	60	0.5	0.25	230	1	50	1450	AXIAL	

1. CONTRACTOR SHALL RECALCULATE ALL EXTERNAL STATIC PRESSURES AND PROVIDE THE ADEQUATE MOTOR.  
2. Stop EF at night time

**EXHAUST FAN SCHEDULE**

### NOTES:-

- ALL DIMENSIONS SHOWN ARE IN MILLIMETERS (MM), UNLESS OTHERWISE SHOWN
- ALL LEVELS SHOWN ARE IN METERS. ALL LEVELS SHOWN ARE FROM MEAN SEA LEVEL
- THIS DRAWING TO BE READ IN CONJUNCTION WITH ALL OTHER RELEVANT DRAWINGS, GENERAL NOTES AND SPECIFICATIONS.

### REFERENCE DRAWINGS

SL.No	DRAWING No.	DESCRIPTION

REV.	DATE	DESCRIPTION	DRAWN	CHKD.	APPRD.

### REVISION

CLIENT  
**MINISTRY OF ENVIRONMENT & ENERGY**  
REPUBLIC OF MALDIVES

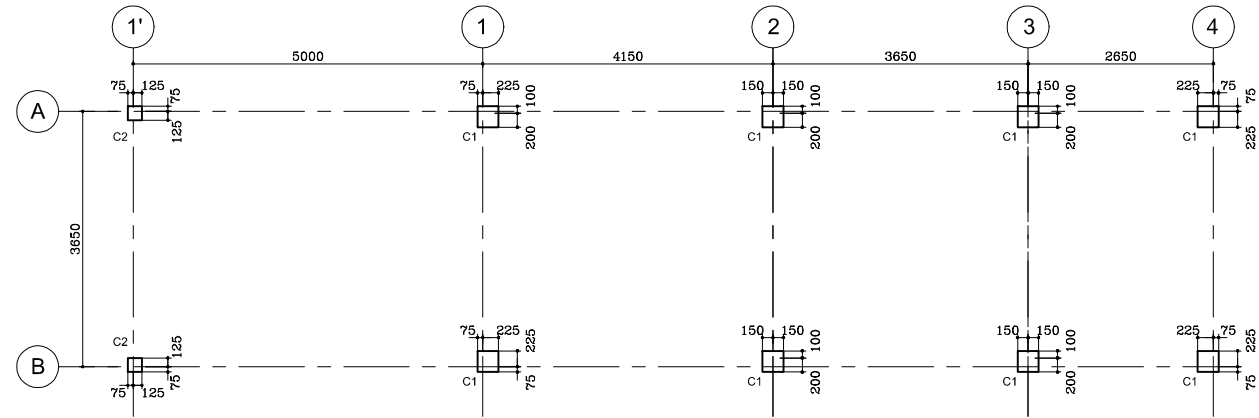
CONSULTANT:  
**ACO** دار الهندسة والعمارة  
**Al Habshi Consultants Office**

PROJECT:  
Consultancy Services for Survey, Design of Water supply Facilities in Tha.Vilifushi, F.Nilandhoo, B.Eydhafushi and Adh. Hanyaameedhoo, Maldives

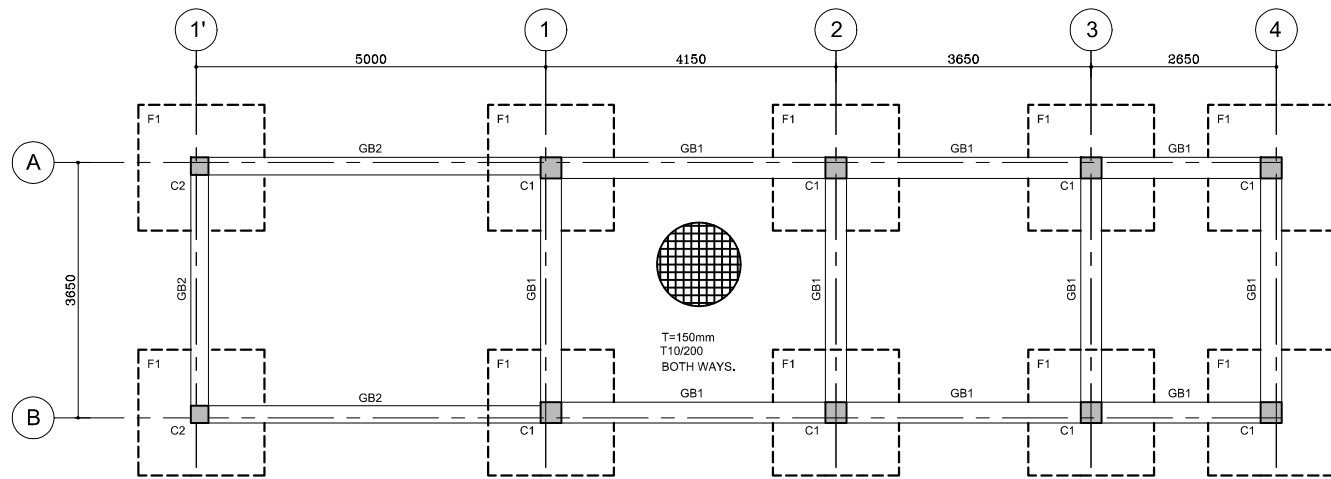
DRAWING TITLE:  
RO PLANT ADMIN BUILDING  
DOOR, WINDOW & EXHAUST FAN DETAILS

DESIGNED	DRAWN	CHECKED	APPROVED	SCALE	DATE
SK	SR	MP	MA	1:50	08.12.15
PROJECT No. SHEET No.		DRAWING No.			
K-627 1 OF 1		BE-WS-115			
REV. No.		0			

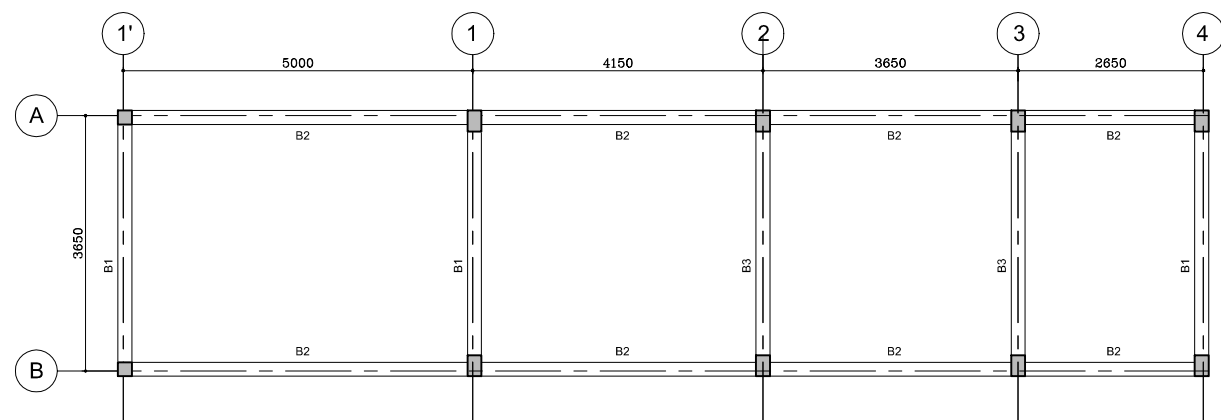




**COLUMN & AXIS LAYOUT**  
SCALE 1:100



**FOOTING & GRADE BEAM LAYOUT**  
SCALE 1:100



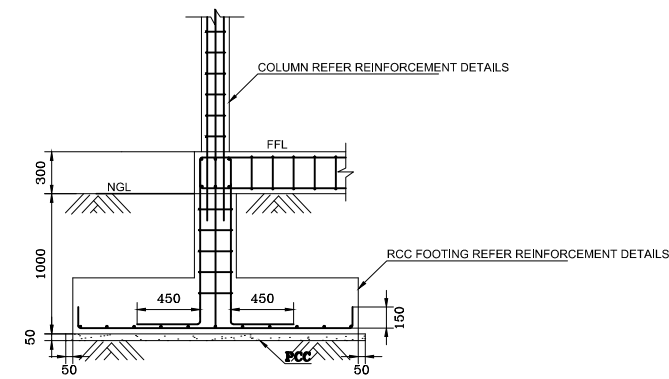
**ROOF BEAM LAYOUT**  
SCALE 1:100

COLUMNS REINFORCEMENT DETAILS							
TYPE	FOUND.			GROUND FLOOR		STIRRUPS	
	SIZE	REINT.	SIZE	REINT.			
C1	300	300	12T16	200	300	10T16	T8/125 c/c
C2	250	250	8T16	200	200	4T16	T8/125 c/c

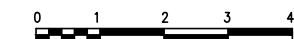
FOOTING REINFORCEMENT DETAILS						
MARK	DIMENSION			REINFORCEMENT	BOXED	REMARKS
	L	W	H			
F1	1800	1800	400	T12@100 c/c B/W, T&B		

GRADE BEAM REINFORCEMENT DETAILS							
MARK	SIZE		BOTTOM BARS	TOP BARS	STIRRUPS	SIDE BARS	REMARKS
	b	h					
GB1	300	300	4T16	3T16	T6/125 c/c		
GB2	250	300	4T16	3T16	T6/125 c/c		

BEAM REINFORCEMENT DETAILS							
MARK	SIZE		BOTTOM BARS	TOP BARS	STIRRUPS	SIDE BARS	REMARKS
	b	h					
B1	200	500	5T16	3T16	T6/125 c/c		
B2	200	500	4T16	3T16	T6/125 c/c		
B3	200	500	5T16	3T16	T6/100 c/c		



**FOOTING DETAIL**  
SCALE 1:25



**NOTES:-**

- ALL DIMENSIONS SHOWN ARE IN MILLIMETERS (MM), UNLESS OTHERWISE SHOWN
- ALL LEVELS SHOWN ARE IN METERS. ALL LEVELS SHOWN ARE FROM MEAN SEA LEVEL
- THIS DRAWING TO BE READ IN CONJUNCTION WITH ALL OTHER RELEVANT DRAWINGS, GENERAL NOTES AND SPECIFICATIONS.
- CONTRACTOR SHALL CONDUCT INDEPENDENT GEOTECHNICAL INVESTIGATION TO CONFORM THE BEARING CAPACITY OF SOIL 150 KN / M
- THE CONCRETE COVER TO ALL REINFORCEMENT SHALL BE AS FOLLOW :-  
COLUMN / BEAM = 40 mm  
SLAB = 30 mm  
FOUNDATION = 50 mm
- WATER CEMENT RATIO SHALL BE 0.50
- FOR ALL GENERAL NOTES REFER BY DWG UT-GN-01
- GRADE OF CONCRETE IS M30 AND GRADE OF STEEL IS Fy 460

**LEGEND:-**

- NGL - NATURAL GROUND LEVEL
- FFL - FINISHED FLOOR LEVEL
- PCC - PLAIN CEMENT CONCRETE

**REFERENCE DRAWINGS**

SL.No	DRAWING No.	DESCRIPTION

REV.	DATE	DESCRIPTION	DRAWN	CHKD.	APPRD.
0	08.12.15	DETAILED DESIGN SUBMISSION	SR	MP	MA
0	22.10.15	CONCEPT DESIGN SUBMISSION	SR	MP	MA

**REVISION**

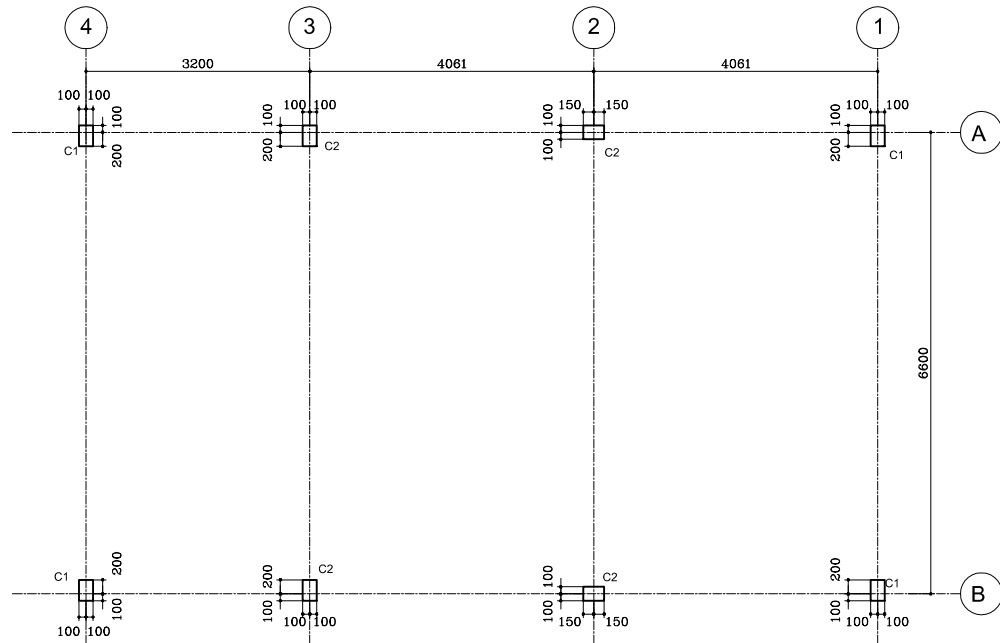
CLIENT  
**MINISTRY OF ENVIRONMENT & ENERGY**  
REPUBLIC OF MALDIVES

CONSULTANT:  
**ACO** دار الهندسة المعمارية  
**Al Habshi Consultants Office**

PROJECT:  
Consultancy Services for Survey, Design of Water supply Facilities in Tha.Vilifushi, F.Nilandhoo, B.Eydhafushi and Adh. Hanyaameedhoo, Maldives

DRAWING TITLE:  
**RO PLANT ADMIN BUILDING**  
**STRUCTURAL DRAWINGS**

DESIGNED	DRAWN	CHECKED	APPROVED	SCALE	DATE
SK	SR	MP	MA	1:50	08.12.15
PROJECT No. SHEET No.		DRAWING No.			
K-627 1 OF 1		BE-WS-117			
REV. No.		0			



**COLUMN & AXIS LAYOUT**  
SCALE 1 : 100

COLUMNS REINFORCEMENT DETAILS						
TYPE	FOUND.		GROUND FLOOR		STIRRUPS	
	SIZE	REINT.	SIZE	REINT.		
C1	200	300	6Y16	200	4Y16	Y8/200
C2	200	300	8Y16	200	8Y16	Y8/200

FOOTING REINFORCEMENT DETAILS							
MARK	DIMENSION			REINFORCEMENT		BOXED	REMARKS
	L	W	H	WIDTH	LENGTH		
F1	1800	1800	300	5Y16/m	5Y16/m		
F2	2500	2500	400	8Y16/m	8Y16/m		

GRADE BEAM REINFORCEMENT DETAILS							
MARK	SIZE		BOTTOM BARS	TOP BARS	STIRRUPS	SIDE BARS	REMARKS
	b	h					
GB1	300	300	3Y16	3Y16	Y8/200		

BEAM REINFORCEMENT DETAILS							
MARK	SIZE		BOTTOM BARS	TOP BARS	STIRRUPS	SIDE BARS	REMARKS
	b	h					
B1	200	500	3Y16 + 2Y16	2Y16	Y8/150		
B2	200	400	3Y16	3Y16	Y8/150		
B3	200	400	5Y16	3Y16	Y8/150		

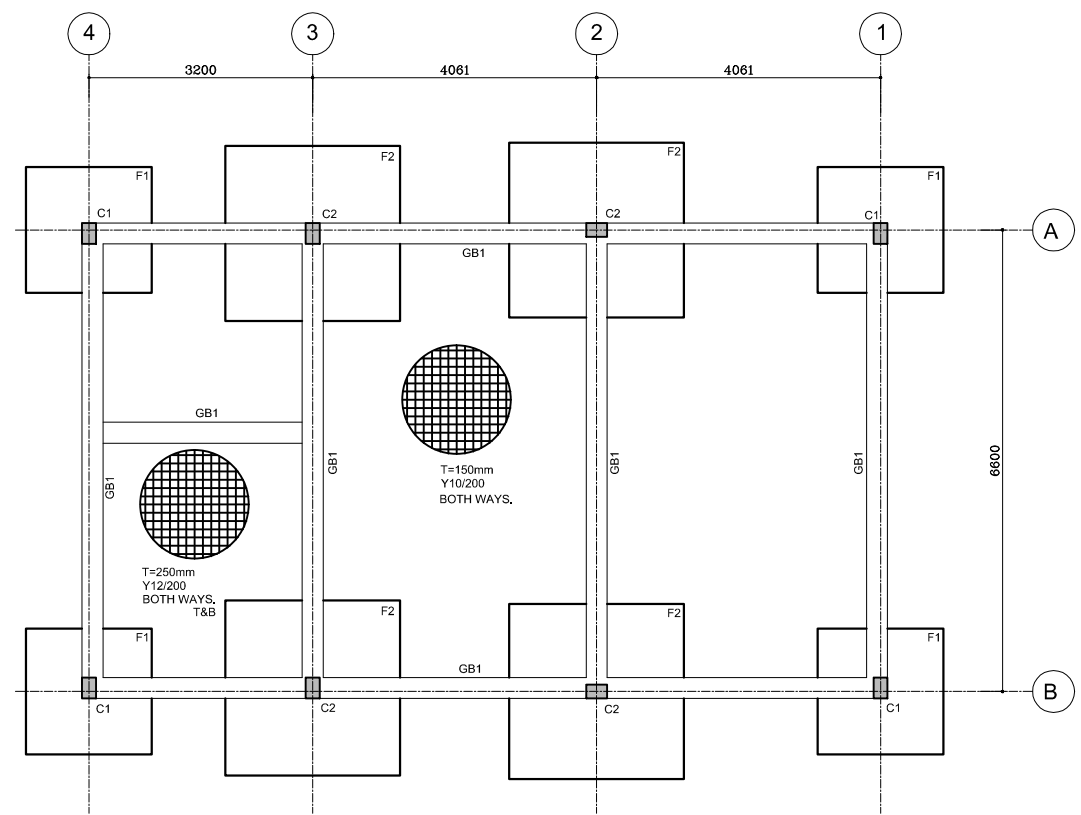
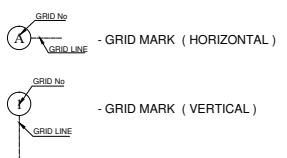
SLABS REINFORCEMENT DETAILS				
MARK	THICK	REINFORCEMENT		REMARKS
		WIDTH	LENGTH	
S1	150	Y10/150	Y10/150	

1. ALL DIMENSIONS ARE IN MILLIMETERS (MM).
2. ALL LEVELS SHOWN ARE IN METERS.
3. THIS DRAWING TO BE READ IN CONJUNCTION WITH ALL OTHER RELEVANT DRAWINGS, GENERAL NOTES AND SPECIFICATIONS.
4. CONTRACTOR SHALL CONDUCT INDEPENDENT GEOTECHNICAL INVESTIGATION TO CONFORM THE BEARING CAPACITY OF SOIL 65 KN/M<sup>2</sup> AT 1M DEPTH AS DESIGNED IS APPROPRIATE SHOULD THERE BE A VARIANCE CONTRACTOR SHALL REVISE THE DESIGN TO CONSTRUCT THE WORK
5. THE CONCRETE COVER TO ALL REINFORCEMENT SHALL BE AS FOLLOW :-  
COLUMN / BEAM = 40 mm  
SLAB = 30 mm  
FOUNDATION = 50 mm
6. WATER CEMENT RATIO SHALL BE 0.50
7. FOR ALL GENERAL NOTES REFER BY DWG UT-GN-01

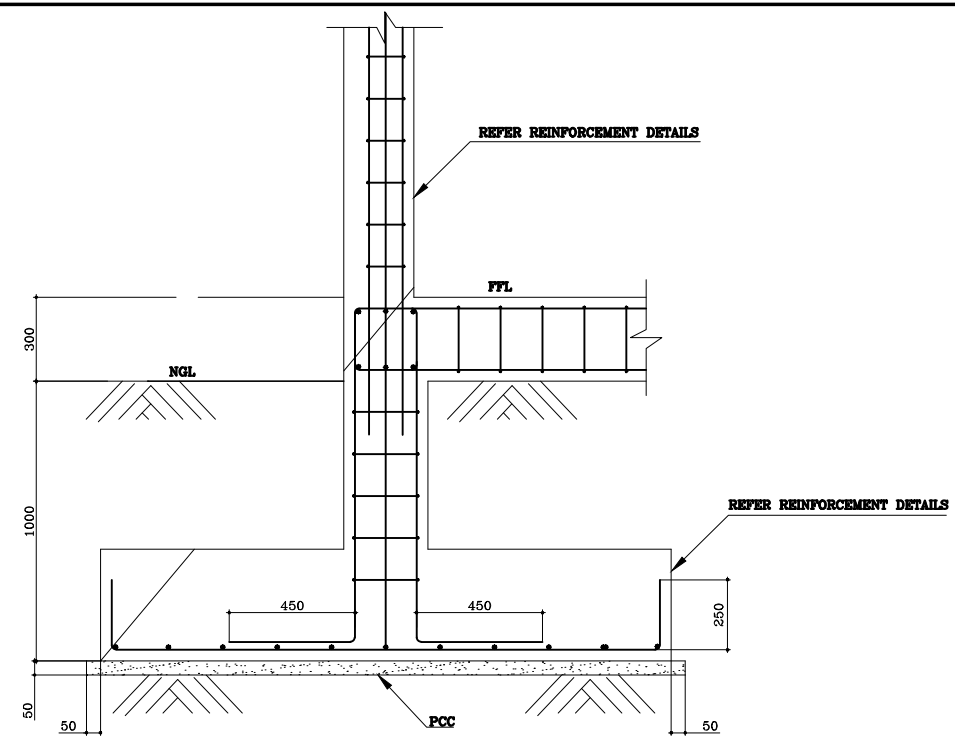
**LEGEND:-**

1. NGL - NATURAL GROUND LEVEL
2. FFL - FINISHED FLOOR LEVEL
3. PCC - PLAIN CEMENT CONCRETE

**ABBREVIATIONS:-**



**FOOTING & GRADE BEAM LAYOUT**  
SCALE 1 : 100



**FOOTING DETAIL**  
SCALE 1 : 25



REFERENCE DRAWINGS			
SL.No.	DRAWING No.	DESCRIPTION	

REV.	DATE	DESCRIPTION	DRAWN	CHKD.	APPRD.
0	08.12.15	DETAILED DESIGN SUBMISSION	SR	MP	MA
0	22.10.15	CONCEPT DESIGN SUBMISSION	SR	MP	MA

**REVISION**

CLIENT  
**MINISTRY OF ENVIRONMENT & ENERGY**  
REPUBLIC OF MALDIVES

CONSULTANT:  
**ACO** دار الهندسة الاستشارية  
**Al Habshi Consultants Office**

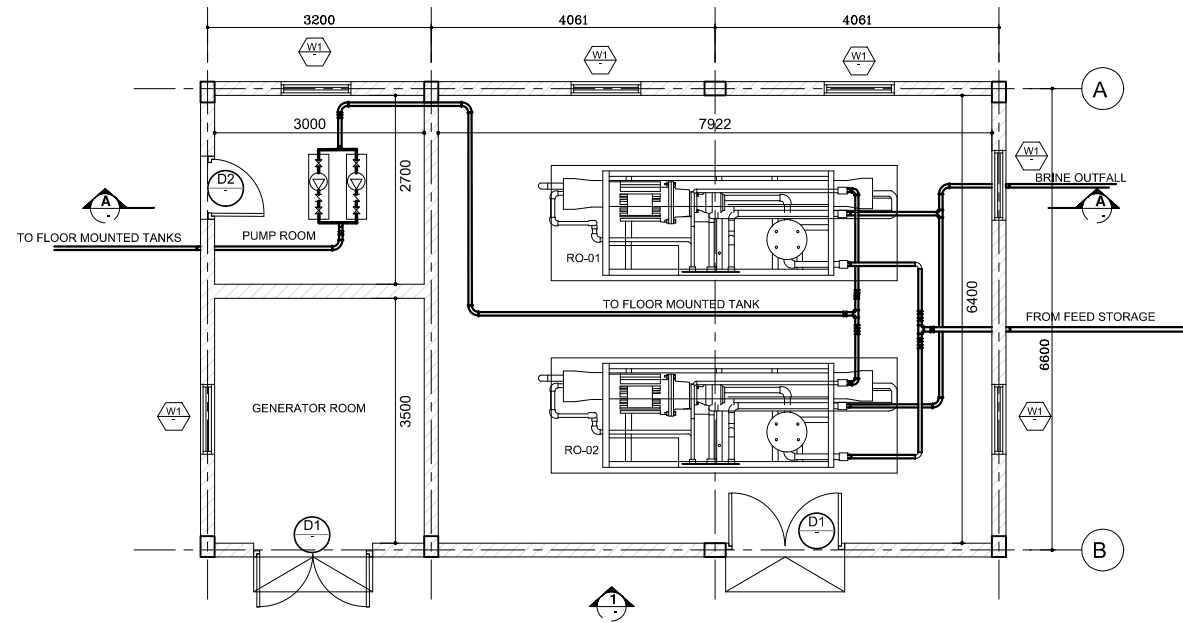
PROJECT:  
Consultancy Services for Survey, Design of Water supply Facilities in Tha.Vilifushi, F.Nilandhoo, B.Eydhafushi and Adh. Hanyaameedhoo, Maldives

DRAWING TITLE:  
**REVERSE OSMOSIS UNIT STRUCTURAL PLANS**

DESIGNED	DRAWN	CHECKED	APPROVED	SCALE	DATE
SK	SR	MP	MA	1:50	08.12.15
PROJECT No. SHEET No.		DRAWING No.			
K-627 1 OF 1		BE-WS-119			
REV. No.	0				



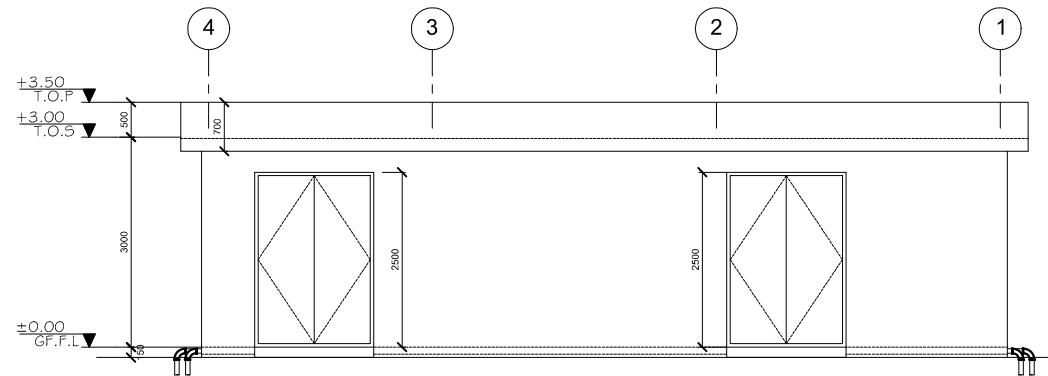




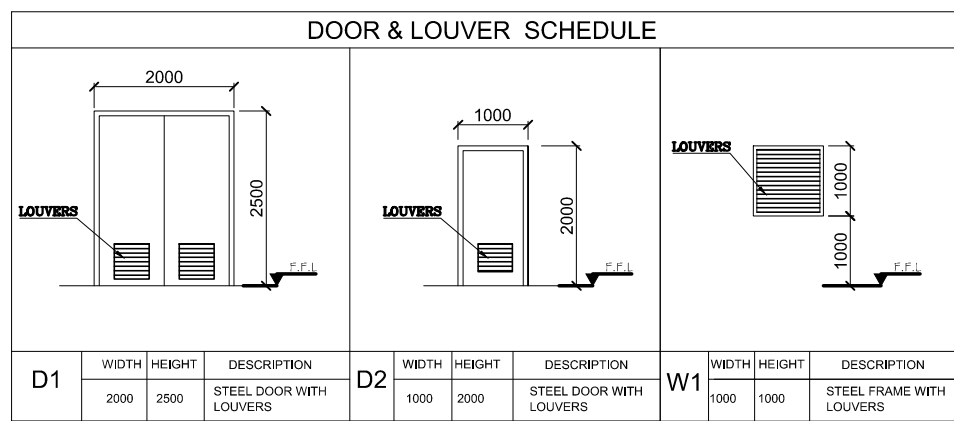
**RO PLANT BUILDING**  
SCALE 1:100

RO PLANT SCHEDULE FOR xxxxxxxx ISLAND

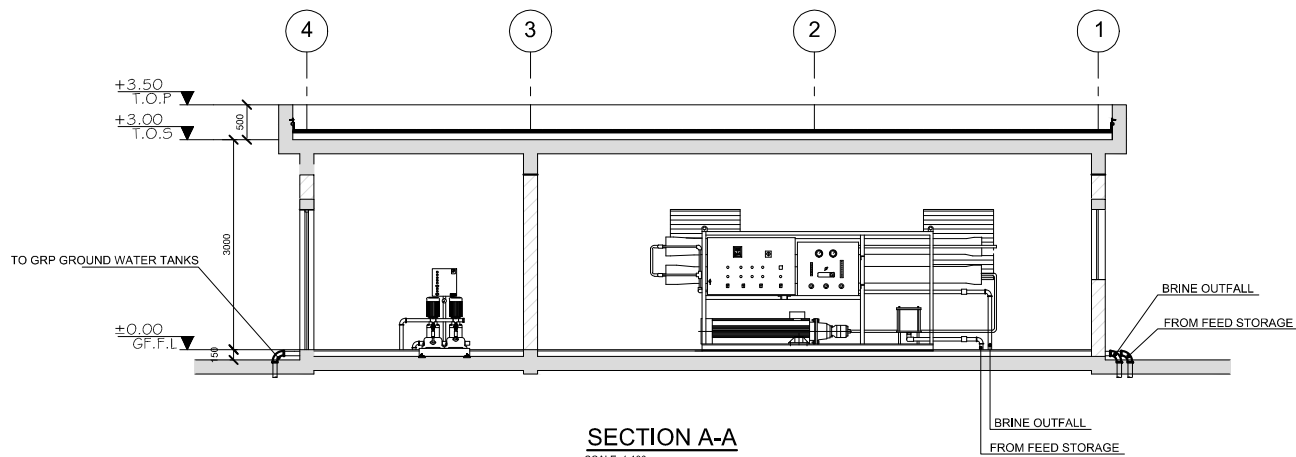
NO.	PUMP CAPACITY	MOTOR	POWER SUPPLY	REMARKS
01	25.0M <sup>3</sup> /HRS	35 KW(46.90 BHP)	400-415/3/50	TWO NOS OF RO PLANT WORKING ACCORDING TO FLOAT SENSOR



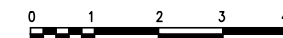
**VIEW-1**  
SCALE 1:100



D1	WIDTH	HEIGHT	DESCRIPTION	D2	WIDTH	HEIGHT	DESCRIPTION	W1	WIDTH	HEIGHT	DESCRIPTION
	2000	2500	STEEL DOOR WITH LOUVERS		1000	2000	STEEL DOOR WITH LOUVERS		1000	1000	STEEL FRAME WITH LOUVERS



**SECTION A-A**  
SCALE 1:100



1. ALL DIMENSION ARE IN MILLIMETER (MM), UNLESS OTHERWISE NOTED
2. ALL LEVELS SHOWN ARE IN METERS.
3. THIS DRAWING TO BE READ IN CONJUNCTION WITH ALL OTHER RELEVANT DRAWINGS, GENERAL NOTES AND SPECIFICATIONS.

REFERENCE DRAWINGS

SL.No	DRAWING No.	DESCRIPTION

REV.	DATE	DESCRIPTION	DRAWN	CHKD.	APPRD.
0	08.12.15	DETAILED DESIGN SUBMISSION	SR	MP	MA
0	22.10.15	CONCEPT DESIGN SUBMISSION	SR	MP	MA

REVISION

CLIENT  
**MINISTRY OF ENVIRONMENT & ENERGY**  
REPUBLIC OF MALDIVES

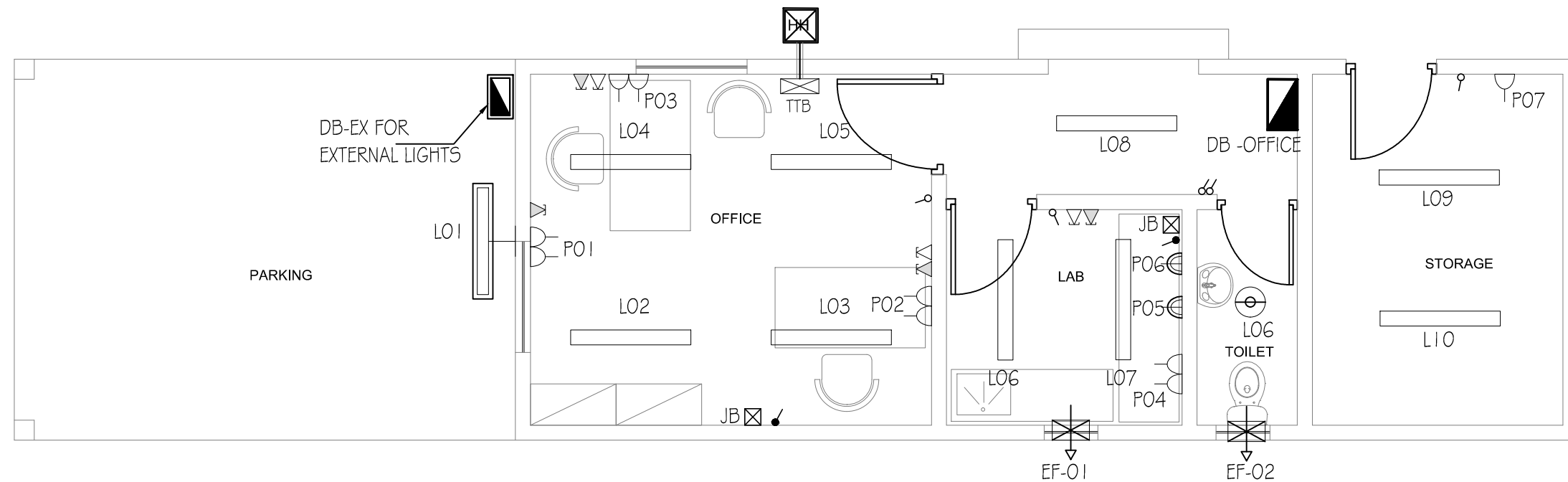
CONSULTANT:  
**ACO** دار الهندسة والبناء  
**Al Habshi Consultants Office**

PROJECT:  
Consultancy Services for Survey, Design of Water supply Facilities in Tha.Vilifushi, F.Nilandhoo, B.Eydhafushi and Adh. Hanyaameedhoo, Maldives

DRAWING TITLE:  
**REVERSE OSMOSIS UNIT DETAILS**

DESIGNED	DRAWN	CHECKED	APPROVED	SCALE	DATE
SK	SR	MP	MA	1:50	08.12.15
PROJECT No. SHEET No.			DRAWING No.		
K-627 1 OF 1			BE-WS-121		
REV. No.			0		

# ELECTRICAL DRAWINGS



**PLAN**  
SCALE 1:100

1. ALL DIMENSIONS ARE IN mm EXCEPT AND OTHERWISE SPECIFIED.
2. THIS DRAWING TO BE READ IN CONJUNCTION WITH ALL OTHER RELEVANT DRAWINGS AND SPECIFICATIONS.
3. ALL ABOVE GROUND CONDUIT SHALL BE RIGID HOT DIP GALVANIZED EXCEPT AS NOTED.
4. ALL NEMA 3R GASKETED 9.5 ENCLOSURES TO HAVE LOCKABLE HANDLE AND 3 POINT LATCHING.

**LEGENDS**

TYPE	SYMBOL	DESCRIPTION
B		1 x 40W SURFACE MOUNTED FLUORESCENT LIGHT FITTING
C		1 x 40W WALL MOUNTED FLUORESCENT LIGHT FITTING-WEATHERPROOF
E		1x60W SURFACE MOUNTED FLUORESCENT DOWN LIGHT - WEATHERPROOF
		5A SWITCHED SOCKET OUTLET (1.000W)
		5A SWITCHED SOCKET OUTLET AT HIGH LEVEL-WEATHER PROOF (1.000W)
		1.5A TWIN SWITCHED SOCKET OUTLET
		JUNCTION BOX
		20A DP SWITCH
		EXHAUST FAN (80W)
		TELEPHONE TERMINAL BOX
		SINGLE OUTLET FOR DATA
		SINGLE OUTLET FOR VOICE
		0.6x0.6x0.6m HAND HOLE

**REFERENCE DRAWINGS**

SL.No	DRAWING No.	DESCRIPTION

REV.	DATE	DESCRIPTION	DRAWN	CHKD	APPRD
0	28-12-15	DETAILED DESIGN SUBMISSION	BA	RDS	MA

**REVISION**

**CLIENT**  
**MINISTRY OF ENVIRONMENT & ENERGY**  
 REPUBLIC OF MALDIVES

**CONSULTANT:**  
**Al Habshi Consultants Office**

**PROJECT:**  
 Consultancy Services for Survey, Design of Water supply Facilities in Tha.Vilifushi, F.Nilandhoo, B.Eydhafushi and Adh. Hanyaameedhoo, Maldives

**DRAWING TITLE:**  
**RO PLANT ADMIN BUILDING ELECTRICAL LAYOUT BEYDHAFUSHI ISLAND**

DESIGNED	DRAWN	CHECKED	APPROVED	SCALE	DATE
RDS	BA	RDS	MA	1:50	28-12-15
PROJECT No.	SHEET No.	DRAWING No.			
K-627	1 OF 1	BE-EL-100			
REV. No.	0				

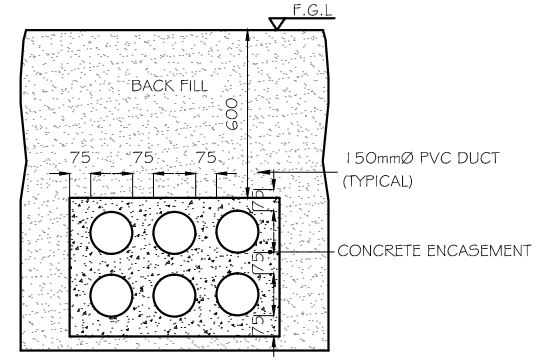




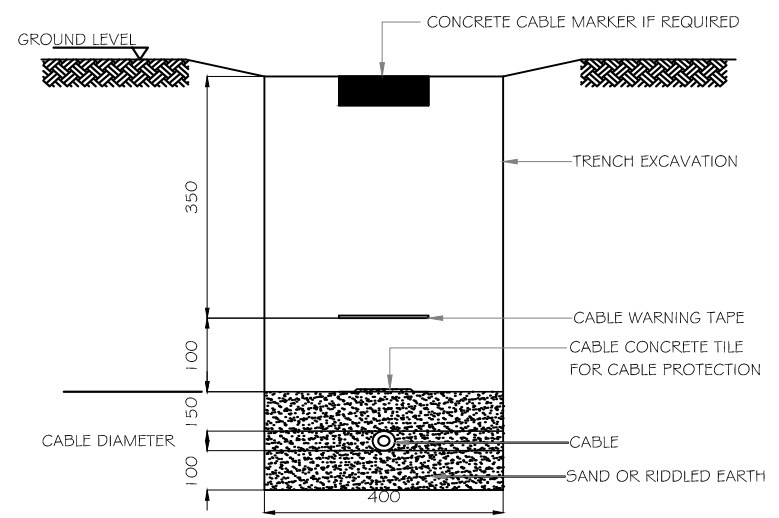




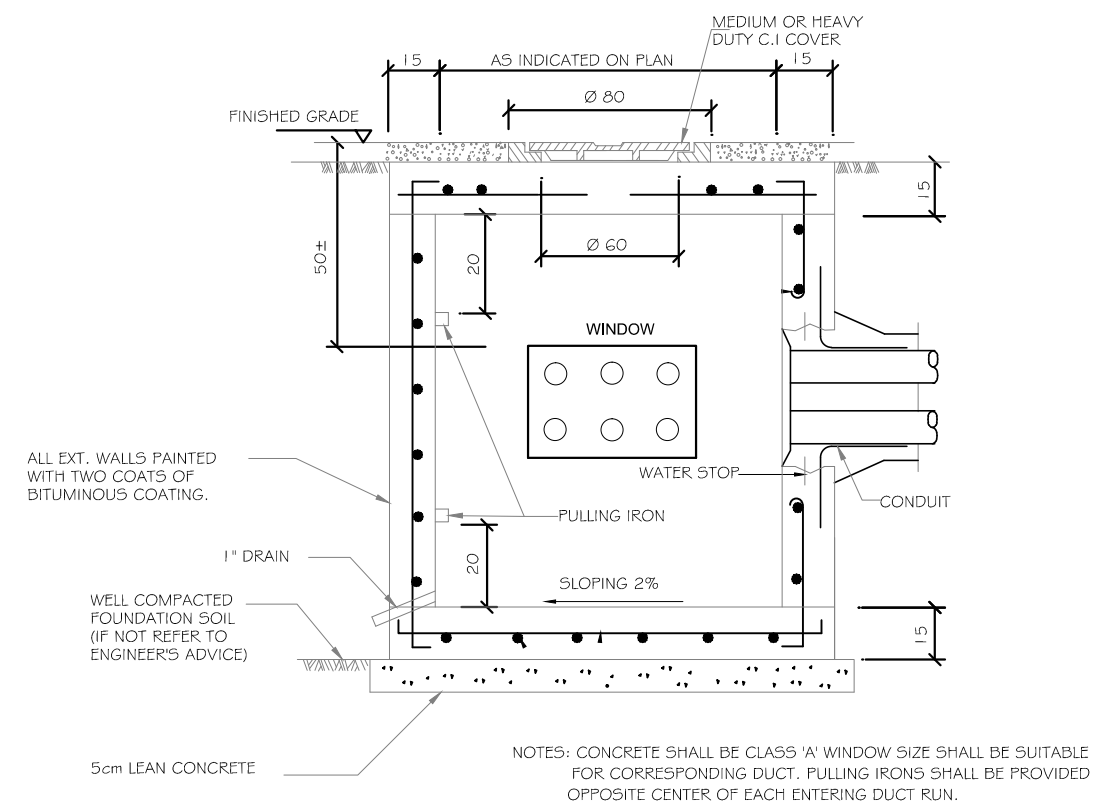




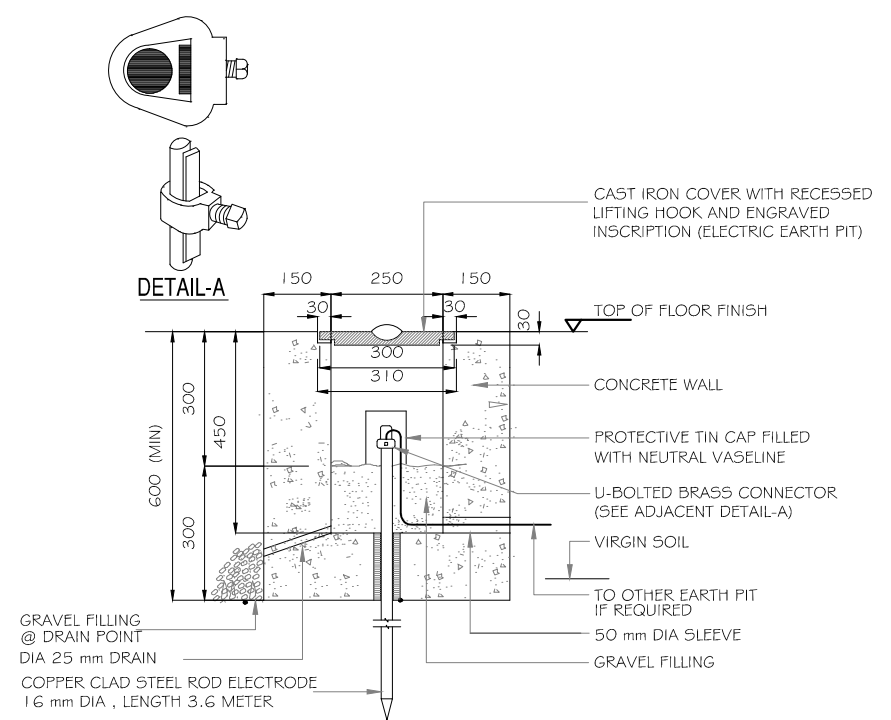
1 DUCT BANK DETAIL



2 DIRECT BURIED CABLES



3 MANHOLE DETAIL



4 EARTH PIT CONSTRUCTION (OUTDOOR)

REFERENCE DRAWINGS			
SL.No	DRAWING No.	DESCRIPTION	

REV.	DATE	DESCRIPTION	DRAWN	CHKD	APPRD
0	28-12-15	DETAILED DESIGN SUBMISSION	BA	RDS	MA

CLIENT  
**MINISTRY OF ENVIRONMENT & ENERGY**  
 REPUBLIC OF MALDIVES

CONSULTANT:  
**ACO** دار الهندسة والاستشارات المعمارية  
 Al Habshi Consultants Office

PROJECT:  
 Consultancy Services for Survey, Design of Water supply Facilities in Tha.Vilifushi, F.Nilandhoo, B.Eydhafushi and Adh. Hanyaameedhoo, Maldives

DRAWING TITLE:					
ELECTRICAL TYPICAL DETAILS					
DESIGNED	DRAWN	CHECKED	APPROVED	SCALE	DATE
RDS	BA	RDS	MA	1:50	28-12-15
PROJECT No. SHEET No.		DRAWING No.			
K-627 1 OF 1		BE-EL-105			
REV. No.		0			