

PROPOSED DESIGN FOR S.HITHADHOO MAGISTRATE COURT

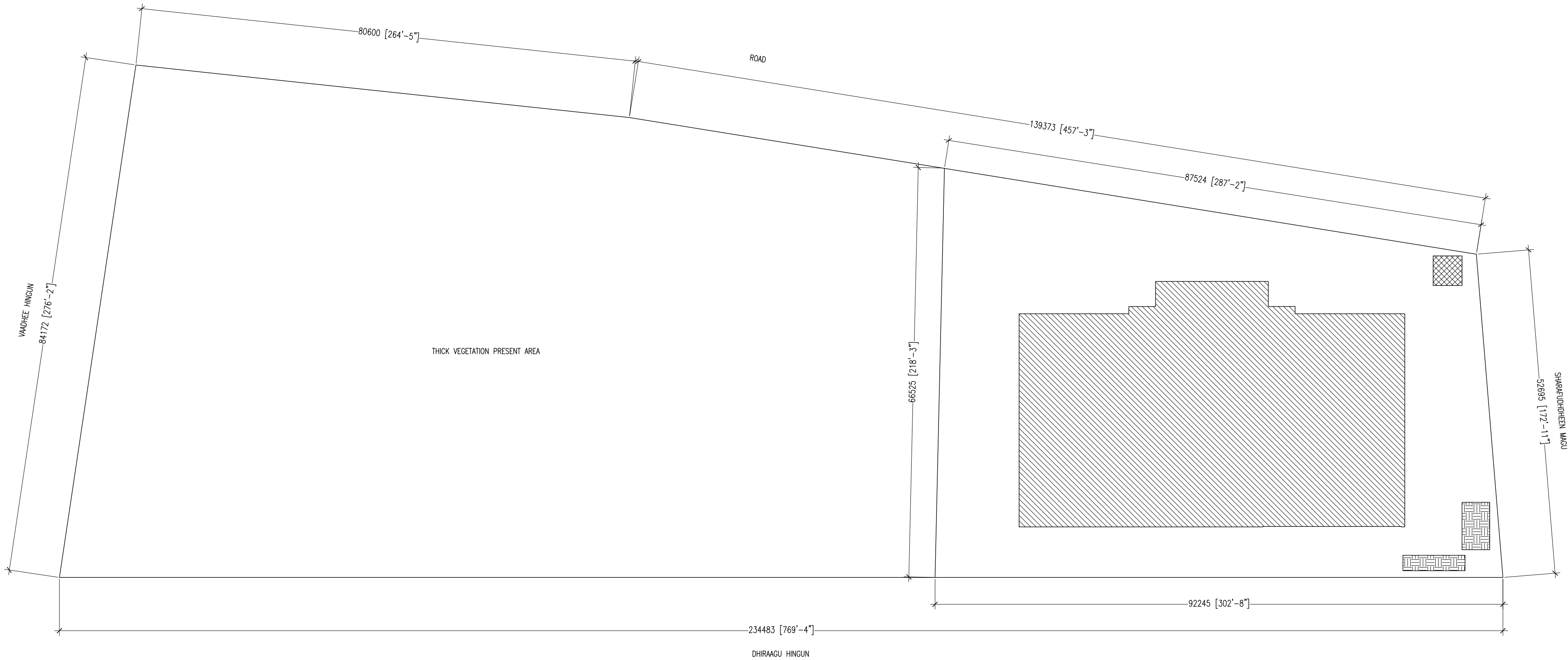
DEPARTMENT OF JUDICIAL ADMINISTRATION
SUPREME COURT OF MALDIVES



NO	SCHEDULE OF FINISHES - S.HITHADHOO MAGISTRATE COURT					
	Exteriors					
1	Roof	BHP Lysaght Trimdeck Roofing sheet - Grey				
2	External walls	1500mm thk solid block Masonary walls - Weatherbond texture paint Finish				
3	Windows	Anodised aluminium at 25microns in white powder coared finish with 6mm blue tinted clear glazing.				
4	External doors	Anodised aluminium in white powder coat finish with 6mm blue tinted clear glazings				
5	Landscaping	Compact white sand landscaping . Landscaped with plantation as per drawings				
6	Electrical services	weather proof electrical fixtures (ABB standard or similar)				
7	Communication	CCTV system covering all sides of the building / including parking lot / PA system				
	Interiors	Floor finish	Wall finish	Ceiling finish	Internal Doors	Windows
	Ground floor					
8	Front Entry	600x600MM non-slip homogenous tiles with aluminium nosing fixed on each step	Emulsion interior paint finish	Emulsion interior paint finish on suspended acoustic ceiling on aluminium frame.	Anodised aluminium framed door in powder coat white with 6mm blue tinted clear glazing	Anodised aluminium framed door in powder coat white with 6mm blue tinted clear glazing
9	Waiting Lounge	600x600MM homogenous tiles	Emulsion interior paint finish	Emulsion interior paint finish on suspended acoustic ceiling on aluminium frame.	Anodised aluminium framed door in powder coat white with 6mm blue tinted clear glazing	Anodised aluminium framed door in powder coat white with 6mm blue tinted clear glazing
10	Reception	600x600MM homogenous tiles	Emulsion interior paint finish	Emulsion interior paint finish on suspended acoustic ceiling on aluminium frame.	Anodised aluminium framed door in powder coat white with 6mm blue tinted clear glazing	Anodised aluminium framed door in powder coat white with 6mm blue tinted clear glazing
11	Corridors	600x600MM homogenous tiles	Emulsion interior paint finish	Emulsion interior paint finish on suspended acoustic ceiling on aluminium frame.	Anodised aluminium framed door in powder coat white with 6mm blue tinted clear glazing	Anodised aluminium framed door in powder coat white with 6mm blue tinted clear glazing
12	VIP Waiting Lounge	600x600MM homogenous tiles	Emulsion interior paint finish	Emulsion interior paint finish on suspended acoustic ceiling on aluminium frame.	Solid timber panel doors	Anodised aluminium framed door in powder coat white with 6mm blue tinted clear glazing
13	Training Room	600x600MM homogenous tiles	Emulsion interior paint finish	Emulsion interior paint finish on suspended acoustic ceiling on aluminium frame.	Solid timber panel doors	Anodised aluminium framed door in powder coat white with 6mm blue tinted clear glazing
14	Meeting Room	600x600MM homogenous tiles	Emulsion interior paint finish	Emulsion interior paint finish on suspended acoustic ceiling on aluminium frame.	Solid timber panel doors	Anodised aluminium framed door in powder coat white with 6mm blue tinted clear glazing
15	Public Hearing Room	600x600MM homogenous tiles	Emulsion interior paint finish	Emulsion interior paint finish on suspended acoustic ceiling on aluminium frame.	Solid timber panel doors	Anodised aluminium framed door in powder coat white with 6mm blue tinted clear glazing
16	Lawyers Room	600x600MM homogenous tiles	Emulsion interior paint finish	Emulsion interior paint finish on suspended acoustic ceiling on aluminium frame.	Solid timber panel doors	Anodised aluminium framed door in powder coat white with 6mm blue tinted clear glazing
17	Muhdathu Jahaa Room	600x600MM homogenous tiles	Emulsion interior paint finish	Emulsion interior paint finish on suspended acoustic ceiling on aluminium frame.	Solid timber panel doors	Anodised aluminium framed door in powder coat white with 6mm blue tinted clear glazing
18	Court Rooms	600x600MM homogenous tiles	Emulsion interior paint finish	Emulsion interior paint finish on suspended acoustic ceiling on aluminium frame.	Solid timber panel doors	Anodised aluminium framed door in powder coat white with 6mm blue tinted clear glazing
19	Magisrate Rooms	600x600MM homogenous tiles	Emulsion interior paint finish	Emulsion interior paint finish on suspended acoustic ceiling on aluminium frame.	Solid timber panel doors	Anodised aluminium framed door in powder coat white with 6mm blue tinted clear glazing
20	Offices	600x600MM homogenous tiles	Emulsion interior paint finish	Emulsion interior paint finish on suspended acoustic ceiling on aluminium frame.	Solid timber panel doors	Anodised aluminium framed door in powder coat white with 6mm blue tinted clear glazing
21	Senior Magistrate Room	600x600MM homogenous tiles	Emulsion interior paint finish	Emulsion interior paint finish on suspended acoustic ceiling on aluminium frame.	Solid timber panel doors	Anodised aluminium framed door in powder coat white with 6mm blue tinted clear glazing
22	Magistrate Meeting Room	600x600MM homogenous tiles	Emulsion interior paint finish	Emulsion interior paint finish on suspended acoustic ceiling on aluminium frame.	Solid timber panel doors	Anodised aluminium framed door in powder coat white with 6mm blue tinted clear glazing
23	Toilets (Magisrtate)	300x300MM ceramic tiles	300x600mm ceramic tiles up to ceiling height. Internal toilet partition panel walls	Emulsion interior paint finish on plaster board ceiling	PVC toilet partition doors	Anodised aluminium framed door in powder coat white with 6mm blue tinted clear glazing
24	Prayer Room Male	600x600MM homogenous tiles. Carpet finish	Emulsion interior paint finish	Emulsion interior paint finish on suspended acoustic ceiling on aluminium frame.	Solid timber panel doors	Anodised aluminium framed door in powder coat white with 6mm blue tinted clear glazing
25	Player Room Female	600x600MM homogenous tiles. Carpet finish	Emulsion interior paint finish	Emulsion interior paint finish on suspended acoustic ceiling on aluminium frame.	Solid timber panel doors	Anodised aluminium framed door in powder coat white with 6mm blue tinted clear glazing
26	Juvenile Room Male	600x600MM homogenous tiles	Emulsion interior paint finish	Emulsion interior paint finish on suspended acoustic ceiling on aluminium frame.	Solid timber panel doors	Anodised aluminium framed door in powder coat white with 6mm blue tinted clear glazing
27	Juvenile Room Female	600x600MM homogenous tiles	Emulsion interior paint finish	Emulsion interior paint finish on suspended acoustic ceiling on aluminium frame.	Solid timber panel doors	Anodised aluminium framed door in powder coat white with 6mm blue tinted clear glazing
28	Toilet (Juvenile)	300x300MM ceramic tiles	300x600mm ceramic tiles up to ceiling height. Internal toilet partition panel walls	Emulsion interior paint finish	PVC toilet partition doors	Anodised aluminium framed door in powder coat white with 6mm blue tinted clear glazing
29	Criminal Room Male	600x600MM homogenous tiles		Emulsion interior paint finish on suspended acoustic ceiling on aluminium frame.	Solid timber panel doors	Anodised aluminium framed door in powder coat white with 6mm blue tinted clear glazing
30	Criminal Room Female	600x600MM homogenous tiles		Emulsion interior paint finish on suspended acoustic ceiling on aluminium frame.	Solid timber panel doors	Anodised aluminium framed door in powder coat white with 6mm blue tinted clear glazing
31	Toilet (Criminal)	300x300MM ceramic tiles	300x600mm ceramic tiles up to ceiling height. Internal toilet partition panel walls	Emulsion interior paint finish on plaster board ceiling	PVC toilet partition doors	Anodised aluminium framed door in powder coat white with 6mm blue tinted clear glazing
32	Janitor	Epoxy floor paint with aluminium nosing fixed on each step	Emulsion interior paint finish	Emulsion interior paint finish on plaster board ceiling	Solid timber panel doors	Anodised aluminium framed door in powder coat white with 6mm blue tinted clear glazing
33	Toilet (Male)	Epoxy floor paint on floor screed	300x600mm ceramic tiles up to ceiling height. Internal toilet partition panel walls	Emulsion interior paint finish on plaster board ceiling	PVC toilet partition doors	Anodised aluminium framed door in powder coat white with 6mm blue tinted clear glazing
34	Toilet (Female)	300x300MM ceramic tiles	300x600mm ceramic tiles up to ceiling height. Internal toilet partition panel walls	Emulsion interior paint finish on plaster board ceiling	PVC toilet partition doors	Anodised aluminium framed door in powder coat white with 6mm blue tinted clear glazing
35	Toilet (Disabled)	300x300MM ceramic tiles	300x600mm ceramic tiles up to ceiling height. Internal toilet partition panel walls	Emulsion interior paint finish on plaster board ceiling	PVC toilet partition doors	Anodised aluminium framed door in powder coat white with 6mm blue tinted clear glazing
36	General Admin Offive	600x600MM homogenous tiles	Emulsion interior paint finish	Emulsion interior paint finish on suspended acoustic ceiling on aluminium frame.	Solid timber panel doors	Anodised aluminium framed door in powder coat white with 6mm blue tinted clear glazing
37	Office Head 1&2	600x600MM homogenous tiles	Emulsion interior paint finish	Emulsion interior paint finish on suspended acoustic ceiling on aluminium frame.	Solid timber panel doors	Anodised aluminium framed door in powder coat white with 6mm blue tinted clear glazing
38	Store Room	600x600MM homogenous tiles	Emulsion interior paint finish	Emulsion interior paint finish on suspended acoustic ceiling on aluminium frame.	Solid timber panel doors	Anodised aluminium framed door in powder coat white with 6mm blue tinted clear glazing
39	IT Room/ Work Space	600x600MM homogenous tiles	Emulsion interior paint finish	Emulsion interior paint finish on suspended acoustic ceiling on aluminium frame.	Solid timber panel doors	Anodised aluminium framed door in powder coat white with 6mm blue tinted clear glazing
40	Server Room	600x600MM homogenous tiles	Emulsion interior paint finish	Emulsion interior paint finish on suspended acoustic ceiling on aluminium frame.	Solid timber panel doors	Anodised aluminium framed door in powder coat white with 6mm blue tinted clear glazing
41	Archive Room	600x600MM homogenous tiles	Emulsion interior paint finish	Emulsion interior paint finish on suspended acoustic ceiling on aluminium frame.	Solid timber panel doors	Anodised aluminium framed door in powder coat white with 6mm blue tinted clear glazing
42	Staff Pantry	600x600MM homogenous tiles	Emulsion interior paint finish	Emulsion interior paint finish on suspended acoustic ceiling on aluminium frame.	Solid timber panel doors	Anodised aluminium framed door in powder coat white with 6mm blue tinted clear glazing
43	Staff Lobby	600x600MM homogenous tiles	Emulsion interior paint finish	Emulsion interior paint finish on suspended acoustic ceiling on aluminium frame.	Solid timber panel doors	Anodised aluminium framed door in powder coat white with 6mm blue tinted clear glazing
44	Pump Room	Epoxy floor paint on floor screed	Emulsion interior paint finish	Emulsion interior paint finish on plaster board ceiling	Solid timber panel doors	Anodised aluminium framed door in powder coat white with 6mm blue tinted clear glazing
45	Panel Room	Epoxy floor paint on floor screed	Emulsion interior paint finish	Emulsion interior paint finish on plaster board ceiling	Solid timber panel doors	Anodised aluminium framed door in powder coat white with 6mm blue tinted clear glazing

Note:

1. All tiles must be fixed by using Connix C500 tile adhesive
2. All exposed concrete gutters must be waterproofed by using Connix Moyaproof WS2 water proofing
3. All interior walls must be putty finished. Use Connix waterproof Conputty for all putty surface.
4. All tiles must be cotto or equal standard
5. Use Connix Megaflow MP and Connix Confiber in all interior and exterior plaster works
6. Use Connix MegaAdd WL1 in all foundation and underground concrete works
7. Use Connix Megaflow P in all other concrete works

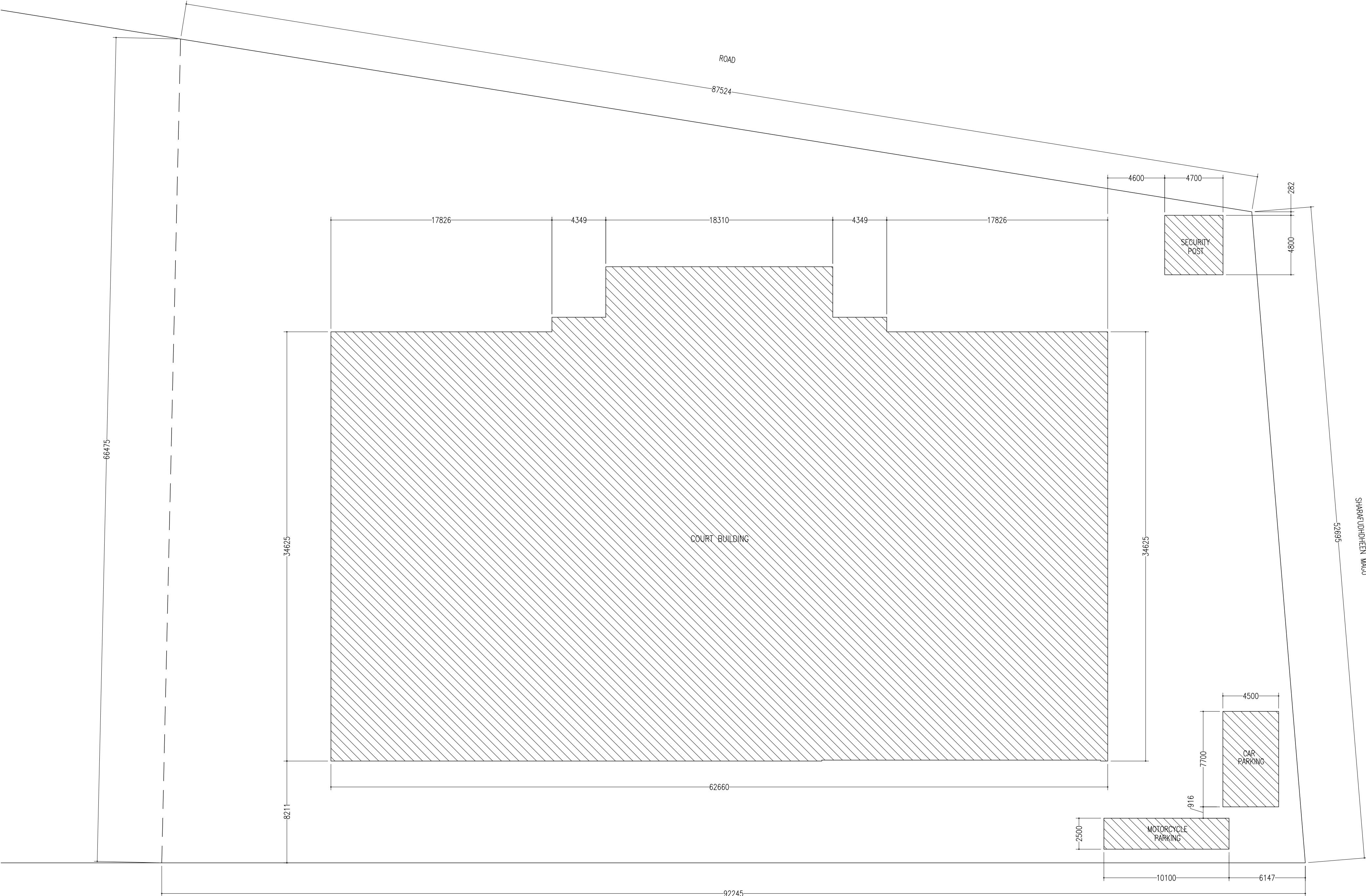


CONTRACTORS MUST
CHECK ALL
DIMENSIONS ON SITE
BEFORE STARTING
ANY WORK OR SHOP
DRAWINGS FIGURED
DIMENSIONS TO TAKE
PRECEDENCE OVER
SCALE READINGS

ArchEng
s t u d i o

Ma.Fiyajahaage, 1st floor, Male, Republic of Maldives
admin@archeng.biz

REVISION:	ARCHITECT: MOHAMED HAMEEN / BDR2014016A	PROJECT:	PROPOSED NEW MAGISTRATE COURT			<div>A-01</div> <div>DWG NO</div> <div>PROJECT NO.: 14-061</div>
	ENGINEER: MOHAMED AHSAN / BDR2014074E	LOCATION:	S.HITHADHOO			
	PRIMARY ENG: MARIYAM SAMAH / BDR2014053PE	DRAWING TITLE:	AS GIVEN			
	ESTIMATOR:	CLIENT:	DEPARTMENT OF JUDICIAL ADMINISTRATION			
	DRAWN BY: ASFAN AHMED/SHAMHAD SAEED	SCALE: AS GIVEN	DIMENSION: MM	DATE: OCTOBER 2014	PROJECT NO.: 14-061	
CONCEPT AND DESIGN IN THIS DRAWING ARE THE PROPERTIES OF ARCHENG STUDIO PVT LTD, UNAUTHORIZED USE OR REPRODUCTION OF PART OF THE DESIGN, DRAWINGS OR CONCEPT TO USE IN OTHER PROJECTS OR SITES OTHER THAN SPECIFIED ON THIS DRAWING IS PROHIBITED						



DHIRAAGU HINGUN

SITE LAYOUT PLAN
SCALE 1:200

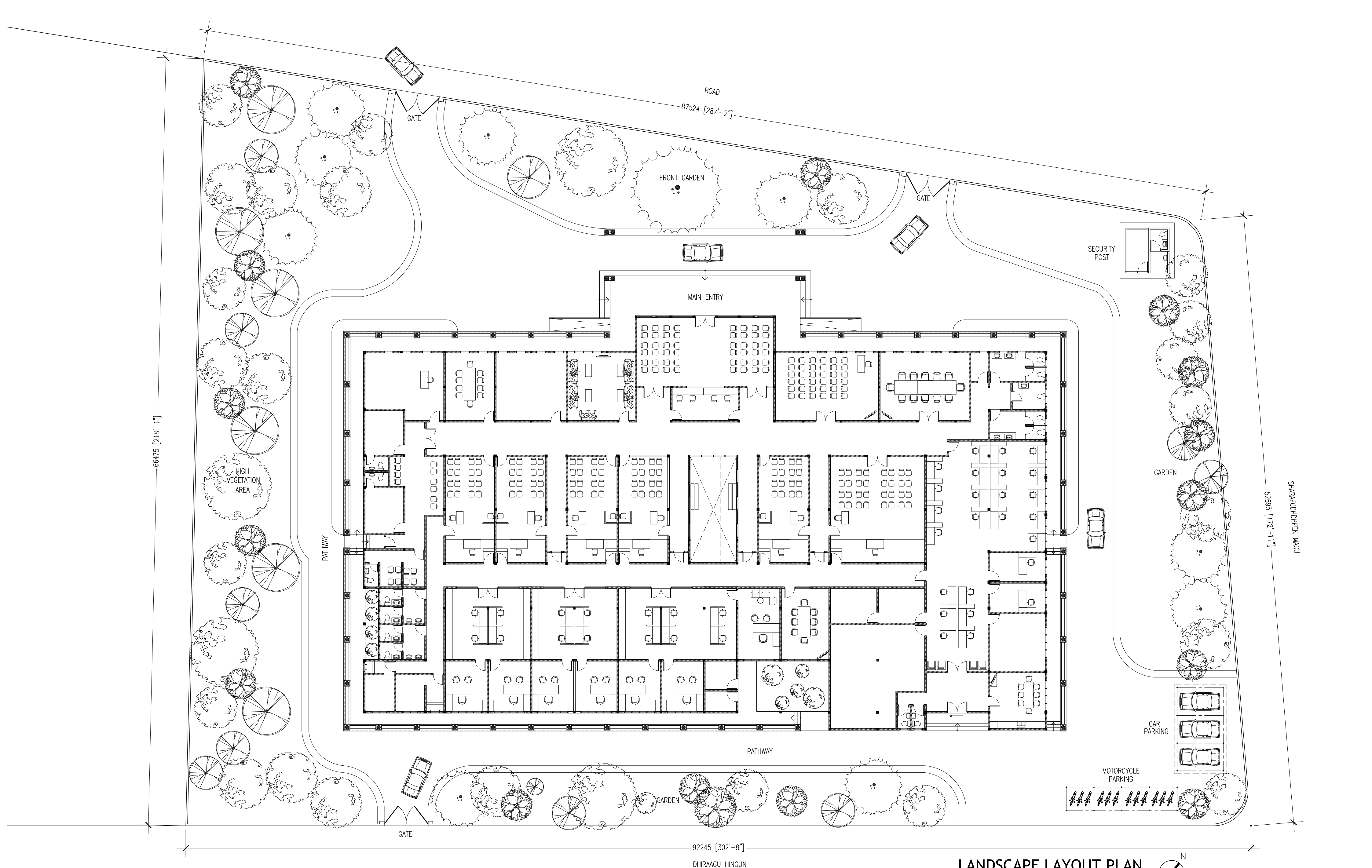


CONTRACTORS MUST
CHECK ALL
DIMENSIONS ON SITE
BEFORE STARTING
ANY WORK OR SHOP
DRAWINGS FIGURED
DIMENSIONS TO TAKE
PRECEDENCE OVER
SCALE READINGS



REVISION:	ARCHITECT: MOHAMED HAMEEN / BDR2014016A	PROJECT: PROPOSED NEW MAGISTRATE COURT	A-02
	ENGINEER: MOHAMED AHSAN / BDR2014074E	LOCATION: S.HITHADHOO	
	PRIMARY ENG: MARIYAM SAMAH / BDR2014053PE	DRAWING TITLE: AS GIVEN	
	ESTIMATOR:	CLIENT: DEPARTMENT OF JUDICIAL ADMINISTRATION	
	DRAWN BY: ASFAN AHMED/SHAMHAD SAEED	SCALE: AS GIVEN	DWG NO
		DIMENSION: MM	PROJECT NO.: 14-061
		DATE: OCTOBER 2014	

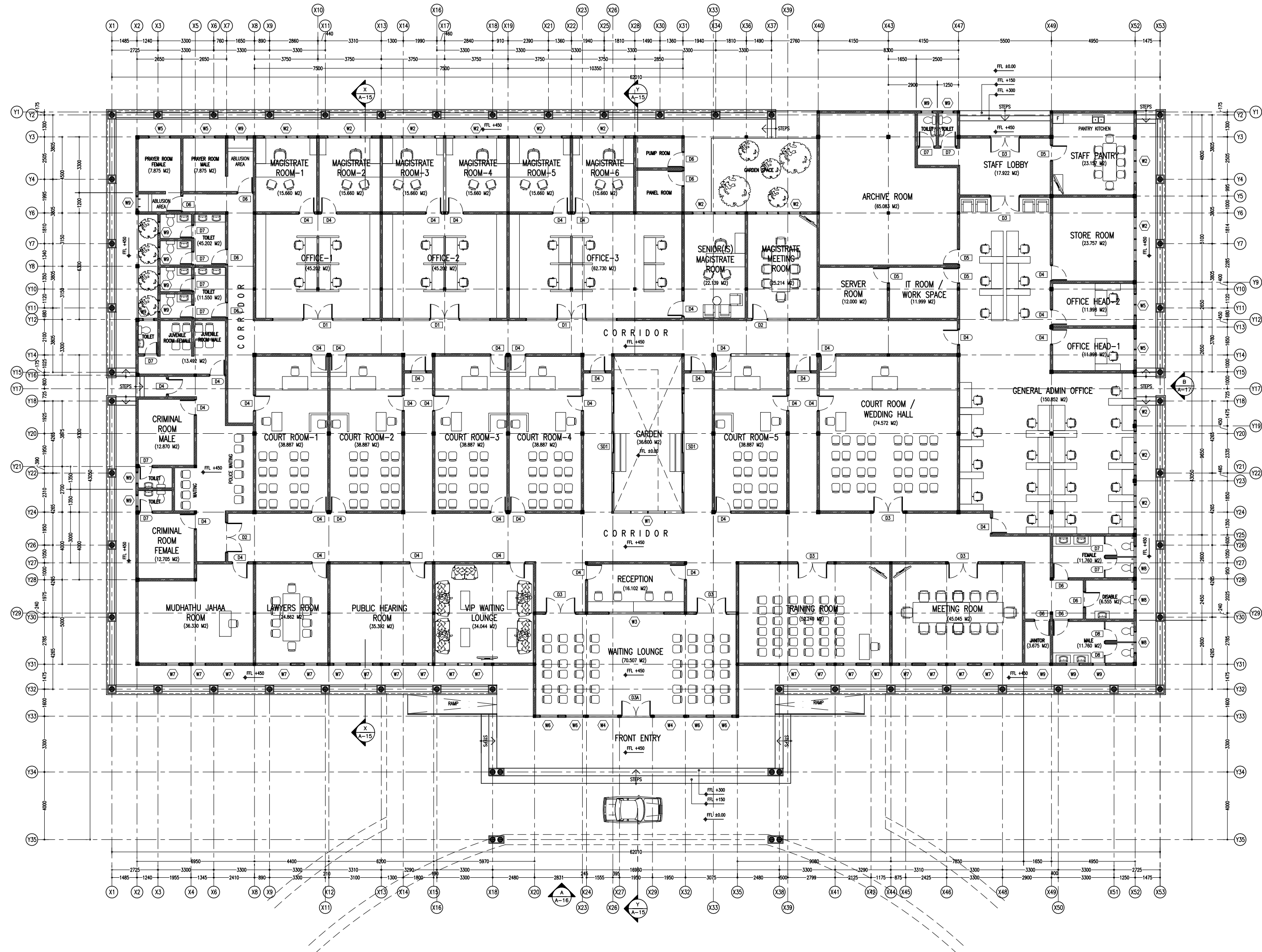
CONCEPT AND DESIGN IN THIS DRAWING ARE THE PROPERTIES OF ARCHENG STUDIO PVT LTD, UNAUTHORIZED USE OR REPRODUCTION OF PART OF THE DESIGN, DRAWINGS OR CONCEPT TO USE IN OTHER PROJECTS OR SITES OTHER THAN SPECIFIED ON THIS DRAWING IS PROHIBITED



CONTRACTORS MUST
CHECK ALL
DIMENSIONS ON SITE
BEFORE STARTING
ANY WORK OR SHOP
DRAWINGS FIGURED
DIMENSIONS TO TAKE
PRECEDENCE OVER
SCALE READINGS

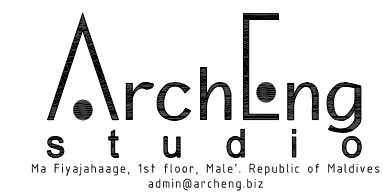
ArchEng
studios
Ma Fiyajhaage, 1st floor, Male, Republic of Maldives
admin@archeng.biz

REVISION:	ARCHITECT: MOHAMED HAMEEN / BDR2014016A	PROJECT: PROPOSED NEW MAGISTRATE COURT	A-03 DWG NO PROJECT NO: 14-061
	ENGINEER: MOHAMED AHSAN / BDR2014074E	LOCATION: S.HITHADHOO	
	PRIMARY ENG: MARIYAM SAMAH / BDR2014053PE	DRAWING TITLE: AS GIVEN	
	ESTIMATOR:	CLIENT: DEPARTMENT OF JUDICIAL ADMINISTRATION	
	DRAWN BY: ASFAN AHMED/SHAMHAD SAEED	SCALE: AS GIVEN	DATE: OCTOBER 2014
CONCEPT AND DESIGN IN THIS DRAWING ARE THE PROPERTIES OF ARCHENG STUDIO PVT LTD, UNAUTHORIZED USE OR REPRODUCTION OF PART OF THE DESIGN, DRAWINGS OR CONCEPT TO USE IN OTHER PROJECTS OR SITES OTHER THAN SPECIFIED ON THIS DRAWING IS PROHIBITED			



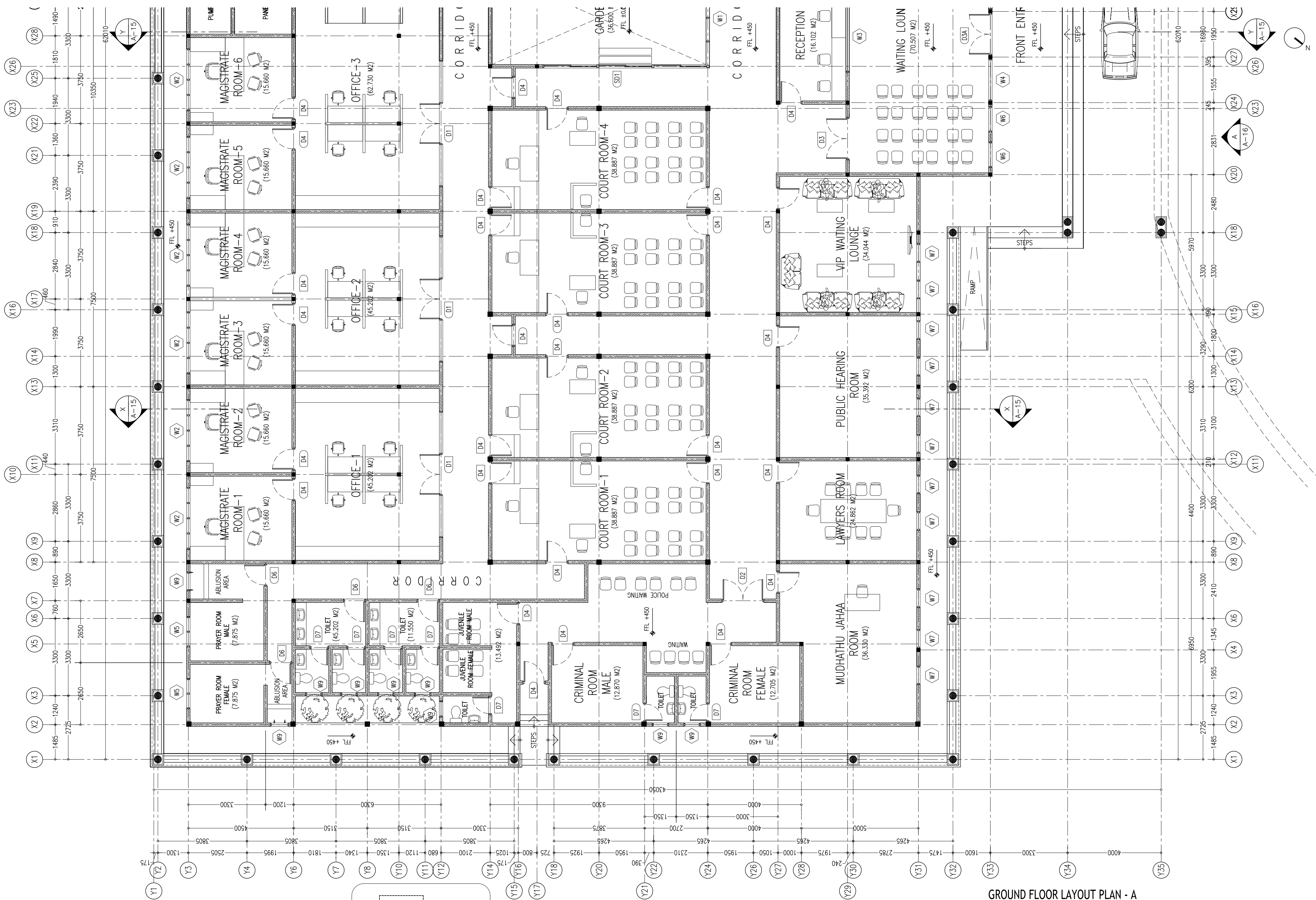
GROUND FLOOR LAYOUT PLAN
SCALE 1:200

CONTRACTORS MUST
CHECK ALL
DIMENSIONS ON SITE
BEFORE STARTING
ANY WORK OR SHOP
DRAWINGS FIGURED
DIMENSIONS TO TAKE
PRECEDENCE OVER
SCALE READINGS



REVISION:	ARCHITECT: MOHAMED HAMEEN / BDR2014016A	PROJECT: PROPOSED NEW MAGISTRATE COURT	A-04 DWG NO PROJECT NO.: 14-061
	ENGINEER: MOHAMED AHSAN / BDR2014074E	LOCATION: S.HITHADHOO	
	PRIMARY ENG: MARIYAM SAMAH / BDR2014053PE	DRAWING TITLE: AS GIVEN	
	ESTIMATOR:	CLIENT: DEPARTMENT OF JUDICIAL ADMINISTRATION	
	DRAWN BY: ASFAN AHMED/SHAMHAD SAEED	SCALE: AS GIVEN DIMENSION: MM DATE: OCTOBER 2014	

CONCEPT AND DESIGN IN THIS DRAWING ARE THE PROPERTIES OF ARCHENG STUDIO PVT LTD., UNAUTHORIZED USE OR REPRODUCTION OF PART OF THE DESIGN, DRAWINGS OR CONCEPT TO USE IN OTHER PROJECTS OR SITES OTHER THAN SPECIFIED ON THIS DRAWING IS PROHIBITED



GROUND FLOOR LAYOUT PLAN - A

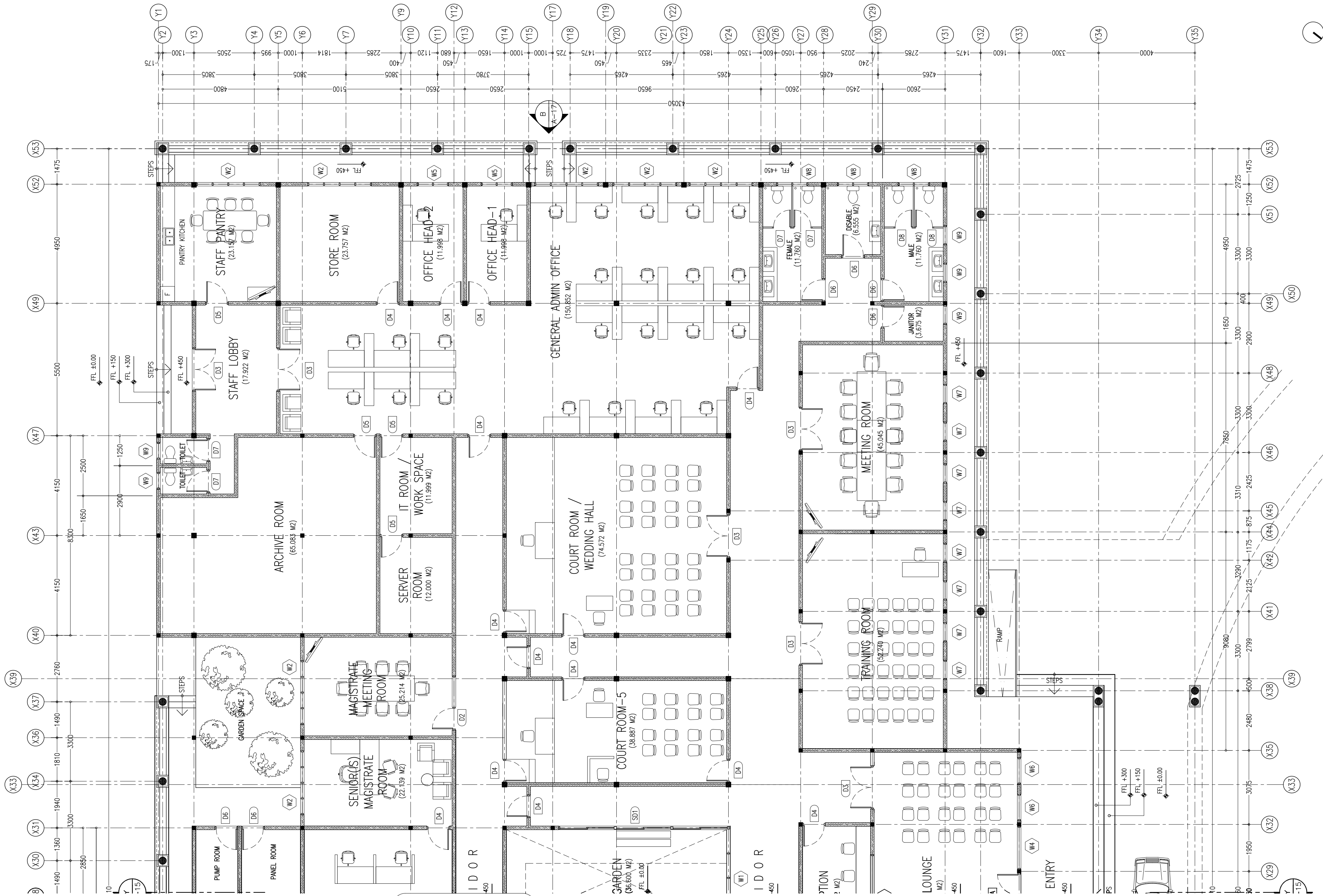
SCALE 1:100

CONTRACTORS MUST
CHECK ALL
DIMENSIONS ON SITE
BEFORE STARTING
ANY WORK OR SHOP
DRAWINGS FIGURED
DIMENSIONS TO TAKE
PRECEDENCE OVER
SCALE READINGS

ArchEng
studios
Ma Fiyajahaage, 1st floor, Male, Republic of Maldives
admin@archeng.biz

REVISION:	ARCHITECT: MOHAMED HAMEEN / BDR2014016A	PROJECT: PROPOSED NEW MAGISTRATE COURT	A-05 DWG NO PROJECT NO.: 14-061
	ENGINEER: MOHAMED AHSAN / BDR2014074E	LOCATION: S.HITHADHOO	
	PRIMARY ENG: MARIYAM SAMAH / BDR2014053PE	DRAWING TITLE: AS GIVEN	
	ESTIMATOR:	CLIENT: DEPARTMENT OF JUDICIAL ADMINISTRATION	
	DRAWN BY: ASFAN AHMED/SHAMHAD SAEED	SCALE: AS GIVEN DIMENSION: MM DATE: OCTOBER 2014	

CONCEPT AND DESIGN IN THIS DRAWING ARE THE PROPERTIES OF ARCHENG STUDIO PVT LTD., UNAUTHORIZED USE OR REPRODUCTION OF PART OF THE DESIGN, DRAWINGS OR CONCEPT TO USE IN OTHER PROJECTS OR SITES OTHER THAN SPECIFIED ON THIS DRAWING IS PROHIBITED



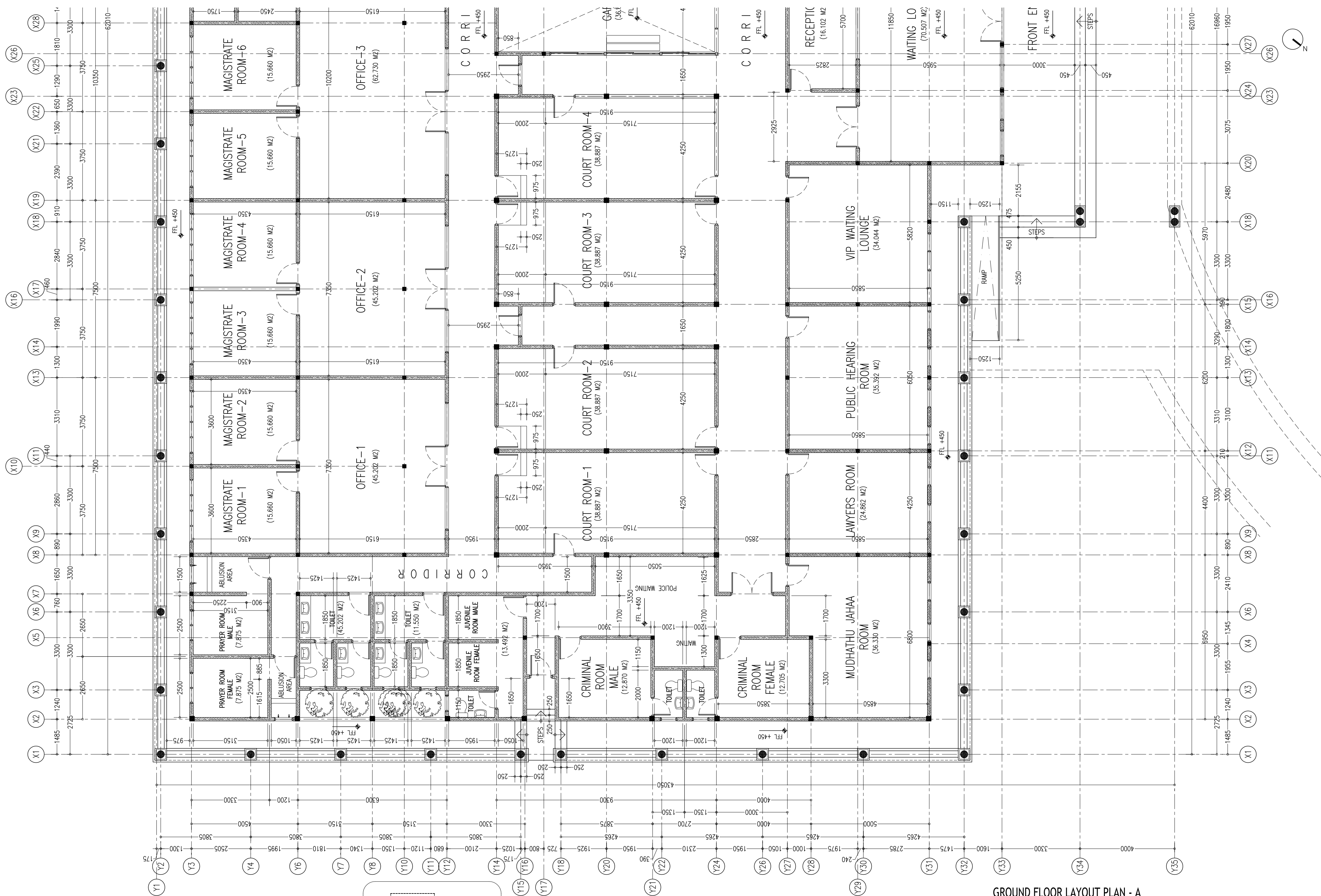
CONTRACTORS MUST
CHECK ALL
DIMENSIONS ON SITE
BEFORE STARTING
ANY WORK OR SHOP
DRAWINGS FIGURED
DIMENSIONS TO TAKE
PRECEDENCE OVER
SCALE READINGS

ArchEng
studios

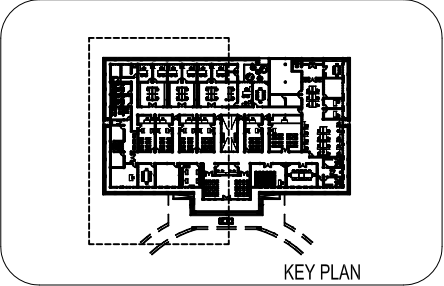
Ma Fiyajahaage, 1st Floor, Male, Republic of Maldives
admin@archeng.biz

REVISION:	ARCHITECT: MOHAMED HAMEEN / BDR2014016A	PROJECT: PROPOSED NEW MAGISTRATE COURT	A-06 DWG NO PROJECT NO.: 14-061
	ENGINEER: MOHAMED AHSAN / BDR2014074E	LOCATION: S.HITHADHOO	
	PRIMARY ENG: MARIYAM SAMAH / BDR2014053PE	DRAWING TITLE: AS GIVEN	
	ESTIMATOR:	CLIENT: DEPARTMENT OF JUDICIAL ADMINISTRATION	
	DRAWN BY: ASFAN AHMED/SHAMHAD SAEED	SCALE: AS GIVEN	
		DIMENSION: MM	DATE: OCTOBER 2014

CONCEPT AND DESIGN IN THIS DRAWING ARE THE PROPERTIES OF ARCHENG STUDIO PVT LTD, UNAUTHORIZED USE OR REPRODUCTION OF PART OF THE DESIGN, DRAWINGS OR CONCEPT TO USE IN OTHER PROJECTS OR SITES OTHER THAN SPECIFIED ON THIS DRAWING IS PROHIBITED



GROUND FLOOR LAYOUT PLAN - A
SCALE 1:100

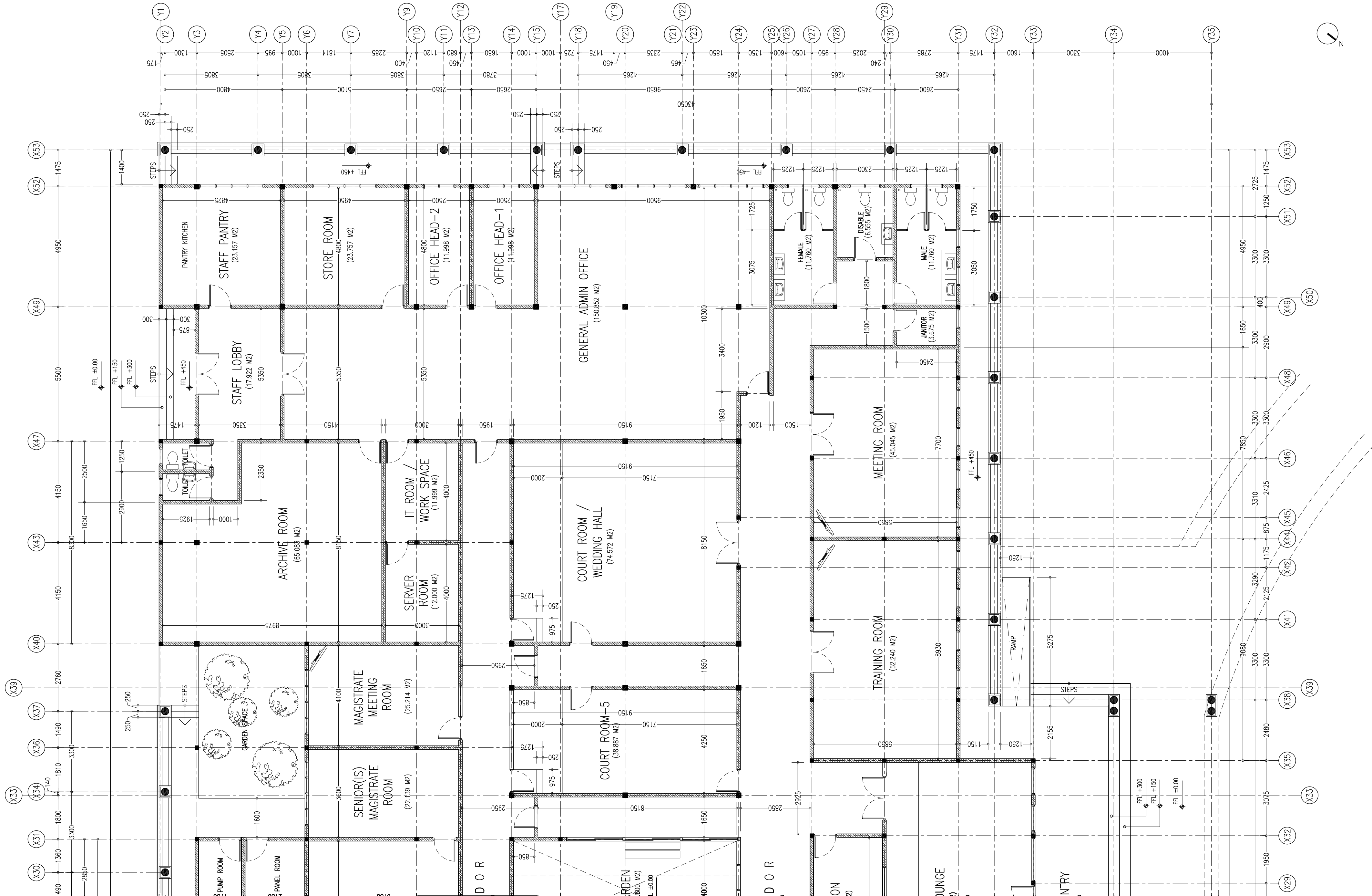


CONTRACTORS MUST
CHECK ALL
DIMENSIONS ON SITE
BEFORE STARTING
ANY WORK OR SHOP
DRAWINGS FIGURED
DIMENSIONS TO TAKE
PRECEDENCE OVER
SCALE READINGS

ArchEng
studios
Ma.Fiyajahaage, 1st Floor, Male, Republic of Maldives
admin@archeng.biz

REVISION:	ARCHITECT: MOHAMED HAMEEN / BDR2014016A	PROJECT: PROPOSED NEW MAGISTRATE COURT	A-07 DWG NO PROJECT NO.: 14-061
	ENGINEER: MOHAMED AHSAN / BDR2014074E	LOCATION: S.HITHADHOO	
	PRIMARY ENG: MARIYAM SAMAH / BDR2014053PE	DRAWING TITLE: AS GIVEN	
	ESTIMATOR:	CLIENT: DEPARTMENT OF JUDICIAL ADMINISTRATION	
	DRAWN BY: ASFAN AHMED/SHAMHAD SAEED	SCALE: AS GIVEN DIMENSION: MM DATE: OCTOBER 2014	

CONCEPT AND DESIGN IN THIS DRAWING ARE THE PROPERTIES OF ARCHENG STUDIO PVT LTD., UNAUTHORIZED USE OR REPRODUCTION OF PART OF THE DESIGN, DRAWINGS OR CONCEPT TO USE IN OTHER PROJECTS OR SITES OTHER THAN SPECIFIED ON THIS DRAWING IS PROHIBITED



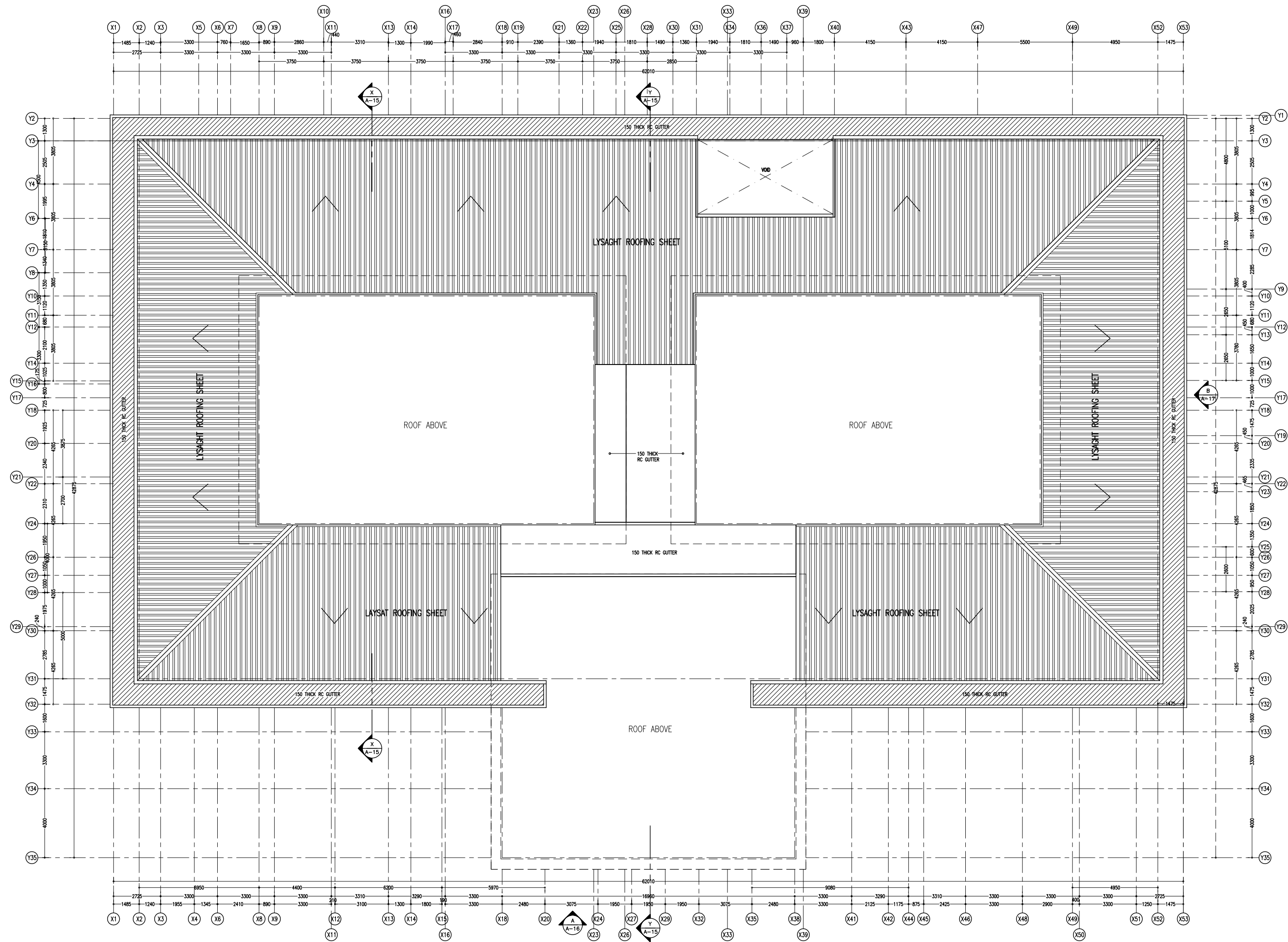
GROUND FLOOR LAYOUT PLAN - B
SCALE 1:200

CONTRACTORS MUST
CHECK ALL
DIMENSIONS ON SITE
BEFORE STARTING
ANY WORK OR SHOP
DRAWINGS FIGURED
DIMENSIONS TO TAKE
PRECEDENCE OVER
SCALE READINGS

ArchEng
studios
Ma Fiyajahaage, 1st floor, Male, Republic of Maldives
admin@archeng.biz

REVISION:	ARCHITECT: MOHAMED HAMEEN / BDR2014016A	PROJECT: PROPOSED NEW MAGISTRATE COURT
	ENGINEER: MOHAMED AHSAN / BDR2014074E	LOCATION: S.HITHADHOO
	PRIMARY ENG: MARIYAM SAMAH / BDR2014053PE	DRAWING TITLE: AS GIVEN
	ESTIMATOR:	CLIENT: DEPARTMENT OF JUDICIAL ADMINISTRATION
	DRAWN BY: ASFAN AHMED/SHAMHAD SAEED	SCALE: AS GIVEN
		DIMENSION: MM
		DATE: OCTOBER 2014
		DWG NO
		PROJECT NO.: 14-061

A-08



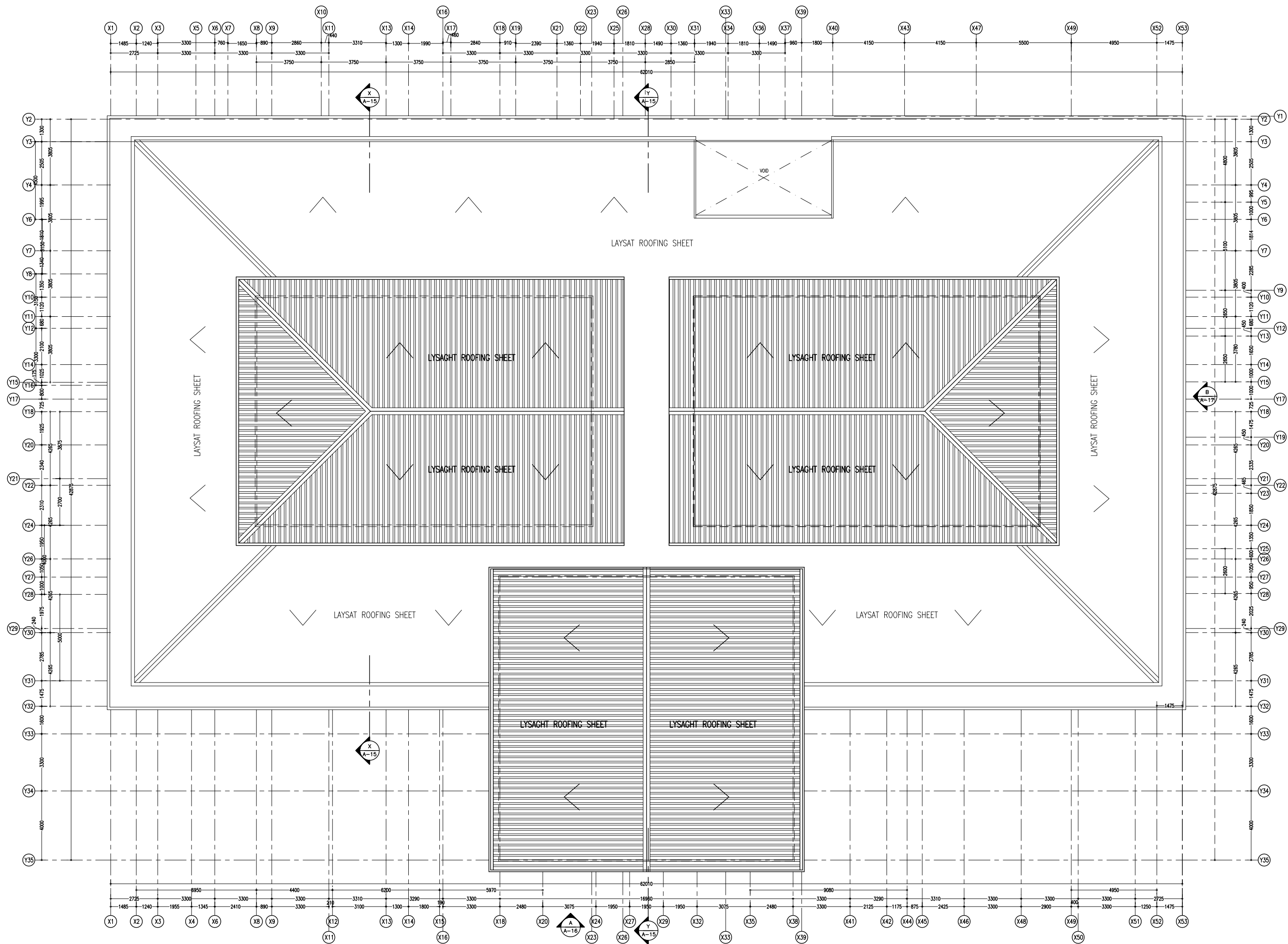
ROOF LVL - 1 LAYOUT PLAN
SCALE 1:200

CONTRACTORS MUST
CHECK ALL
DIMENSIONS ON SITE
BEFORE STARTING
ANY WORK OR SHOP
DRAWINGS FIGURED
DIMENSIONS TO TAKE
PRECEDENCE OVER
SCALE READINGS

ArchEng
studio
Ma Fiyajahaage, 1st floor, Male, Republic of Maldives
admin@archeng.biz

REVISION:	ARCHITECT: MOHAMED HAMEEN / BDR2014016A	PROJECT: PROPOSED NEW MAGISTRATE COURT	A-09 DWG NO PROJECT NO.: 14-061
	ENGINEER: MOHAMED AHSAN / BDR2014074E	LOCATION: S.HITHADHOO	
	PRIMARY ENG: MARIYAM SAMAH / BDR2014053PE	DRAWING TITLE: AS GIVEN	
	ESTIMATOR:	CLIENT: DEPARTMENT OF JUDICIAL ADMINISTRATION	
	DRAWN BY: ASFAN AHMED/SHAMHAD SAEED	SCALE: AS GIVEN DIMENSION: MM DATE: OCTOBER 2014	

CONCEPT AND DESIGN IN THIS DRAWING ARE THE PROPERTIES OF ARCHENG STUDIO PVT LTD., UNAUTHORIZED USE OR REPRODUCTION OF PART OF THE DESIGN, DRAWINGS OR CONCEPT TO USE IN OTHER PROJECTS OR SITES OTHER THAN SPECIFIED ON THIS DRAWING IS PROHIBITED



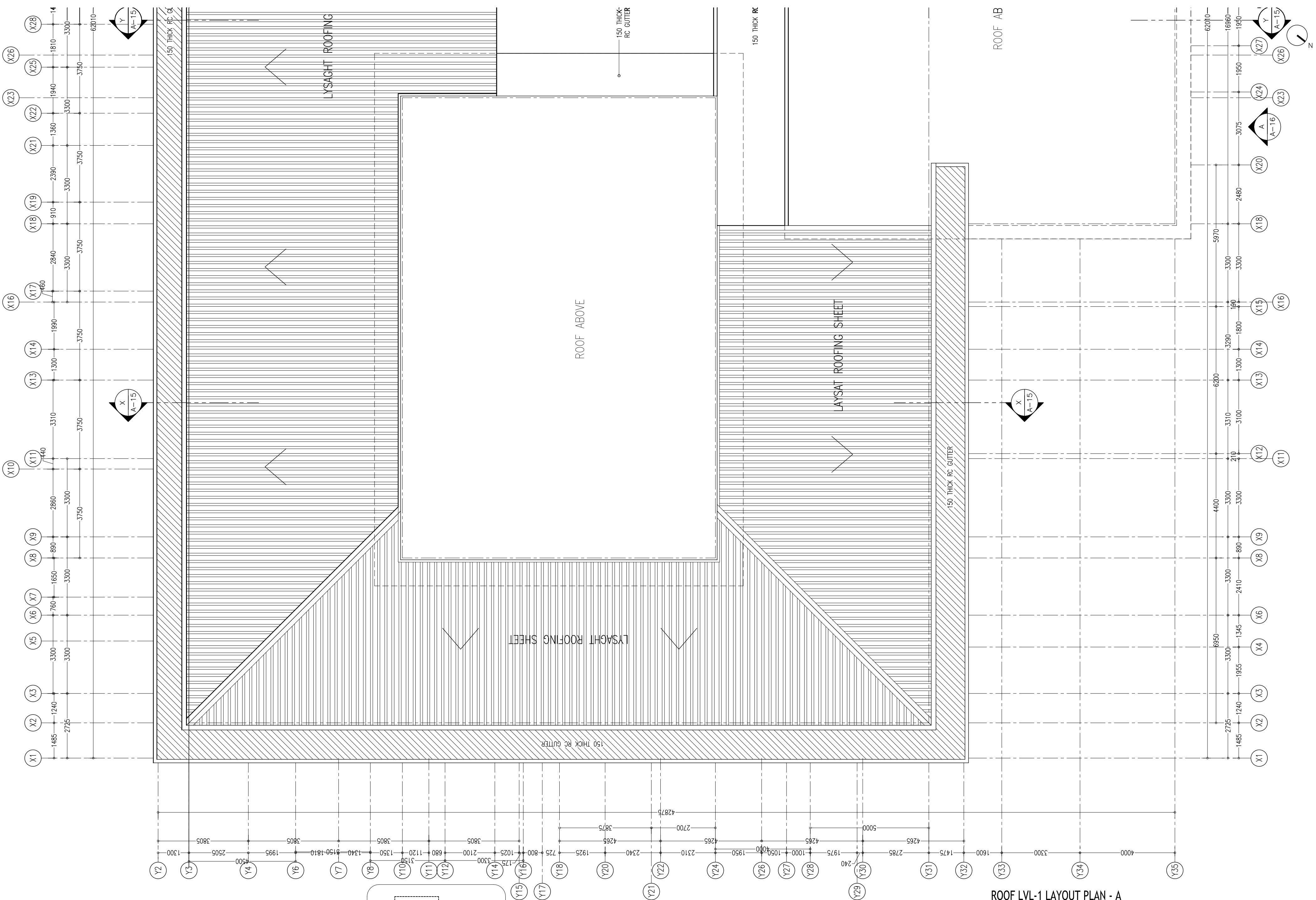
ROOF LVL - 2 LAYOUT PLAN
SCALE 1:200

CONTRACTORS MUST
CHECK ALL
DIMENSIONS ON SITE
BEFORE STARTING
ANY WORK OR SHOP
DRAWINGS FIGURED
DIMENSIONS TO TAKE
PRECEDENCE OVER
SCALE READINGS



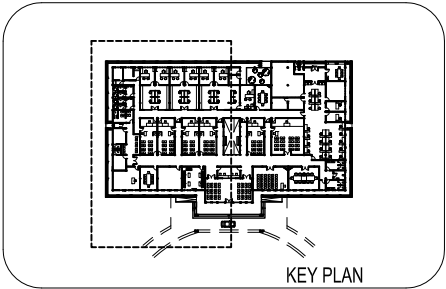
REVISION:	ARCHITECT: MOHAMED HAMEEN / BDR2014016A	PROJECT: PROPOSED NEW MAGISTRATE COURT	A-10 DWG NO PROJECT NO.: 14-061
	ENGINEER: MOHAMED AHSAN / BDR2014074E	LOCATION: S.HITHADHOO	
	PRIMARY ENG: MARIYAM SAMAH / BDR2014053PE	DRAWING TITLE: AS GIVEN	
	ESTIMATOR:	CLIENT: DEPARTMENT OF JUDICIAL ADMINISTRATION	
	DRAWN BY: ASFAN AHMED/SHAMHAD SAEED	SCALE: AS GIVEN DIMENSION: MM DATE: OCTOBER 2014	

CONCEPT AND DESIGN IN THIS DRAWING ARE THE PROPERTIES OF ARCHENG STUDIO PVT LTD. UNAUTHORIZED USE OR REPRODUCTION OF PART OF THE DESIGN, DRAWINGS OR CONCEPT TO USE IN OTHER PROJECTS OR SITES OTHER THAN SPECIFIED ON THIS DRAWING IS PROHIBITED



ROOF LVL-1 LAYOUT PLAN - A

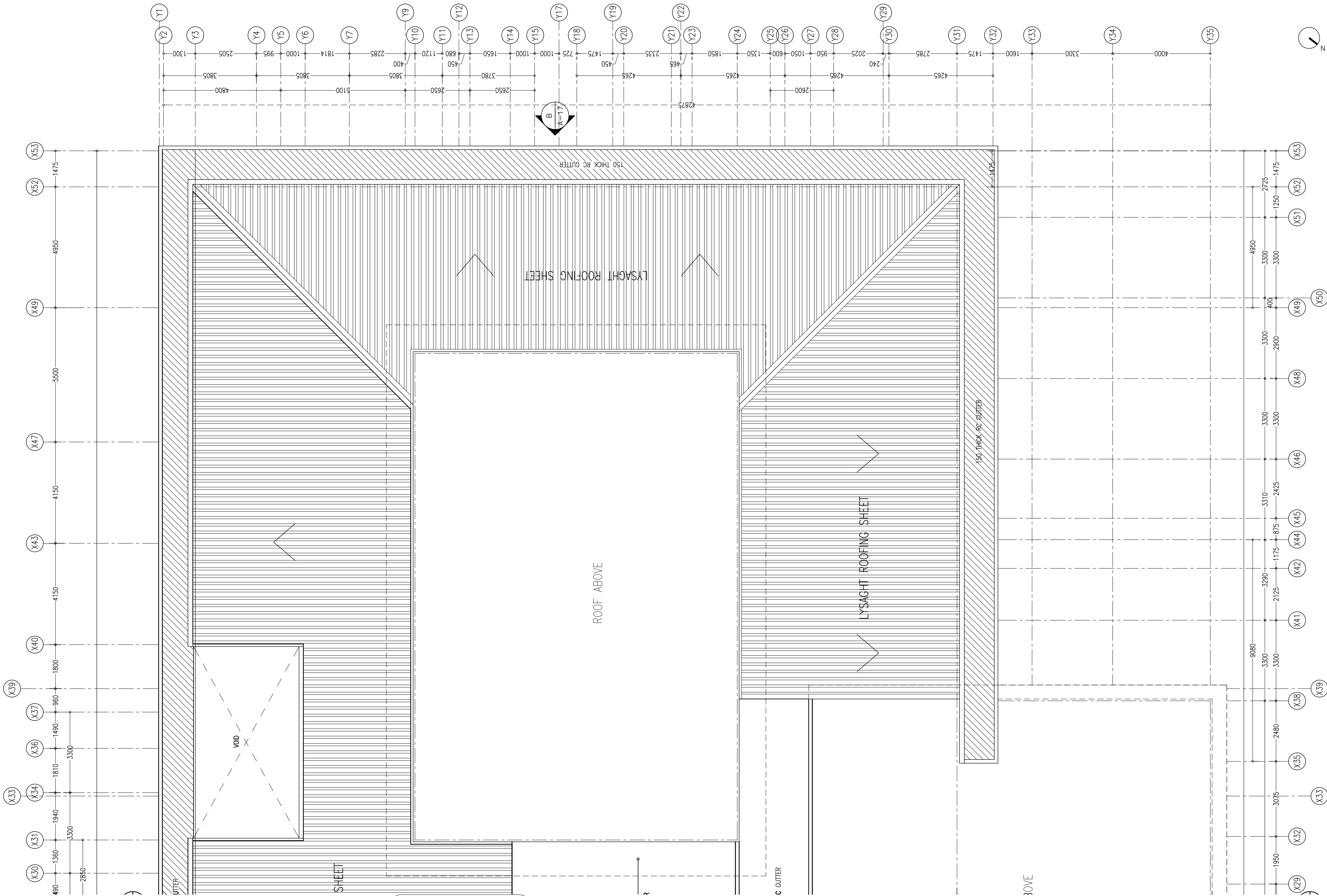
SCALE 1:100



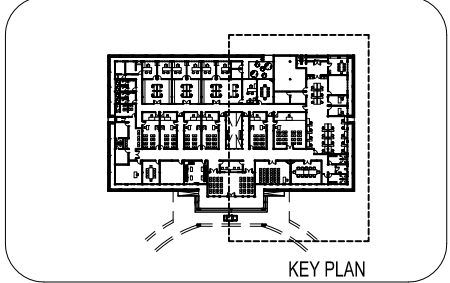
CONTRACTORS MUST
CHECK ALL
DIMENSIONS ON SITE
BEFORE STARTING
ANY WORK OR SHOP
DRAWINGS FIGURED
DIMENSIONS TO TAKE
PRECEDENCE OVER
SCALE READINGS

ArchEng
studio
Ma Fiyajahaage, 1st floor, Male', Republic of Maldives
admin@archeng.biz

REVISION:	ARCHITECT: MOHAMED HAMEEN / BDR2014016A	PROJECT: PROPOSED NEW MAGISTRATE COURT	A-11 DWG NO PROJECT NO.: 14-061
	ENGINEER: MOHAMED AHSAN / BDR2014074E	LOCATION: S.HITHADHOO	
	PRIMARY ENG: MARIYAM SAMAH / BDR2014053PE	DRAWING TITLE: AS GIVEN	
	ESTIMATOR:	CLIENT: DEPARTMENT OF JUDICIAL ADMINISTRATION	
	DRAWN BY: ASFAN AHMED/SHAMHAD SAEED	SCALE: AS GIVEN	
CONCEPT AND DESIGN IN THIS DRAWING ARE THE PROPERTIES OF ARCHENG STUDIO PVT LTD., UNAUTHORIZED USE OR REPRODUCTION OF PART OF THE DESIGN, DRAWINGS OR CONCEPT TO USE IN OTHER PROJECTS OR SITES OTHER THAN SPECIFIED ON THIS DRAWING IS PROHIBITED		DIMENSION: MM	DATE: OCTOBER 2014



ROOF LVL-1 LAYOUT PLAN - B
SCALE 1:100

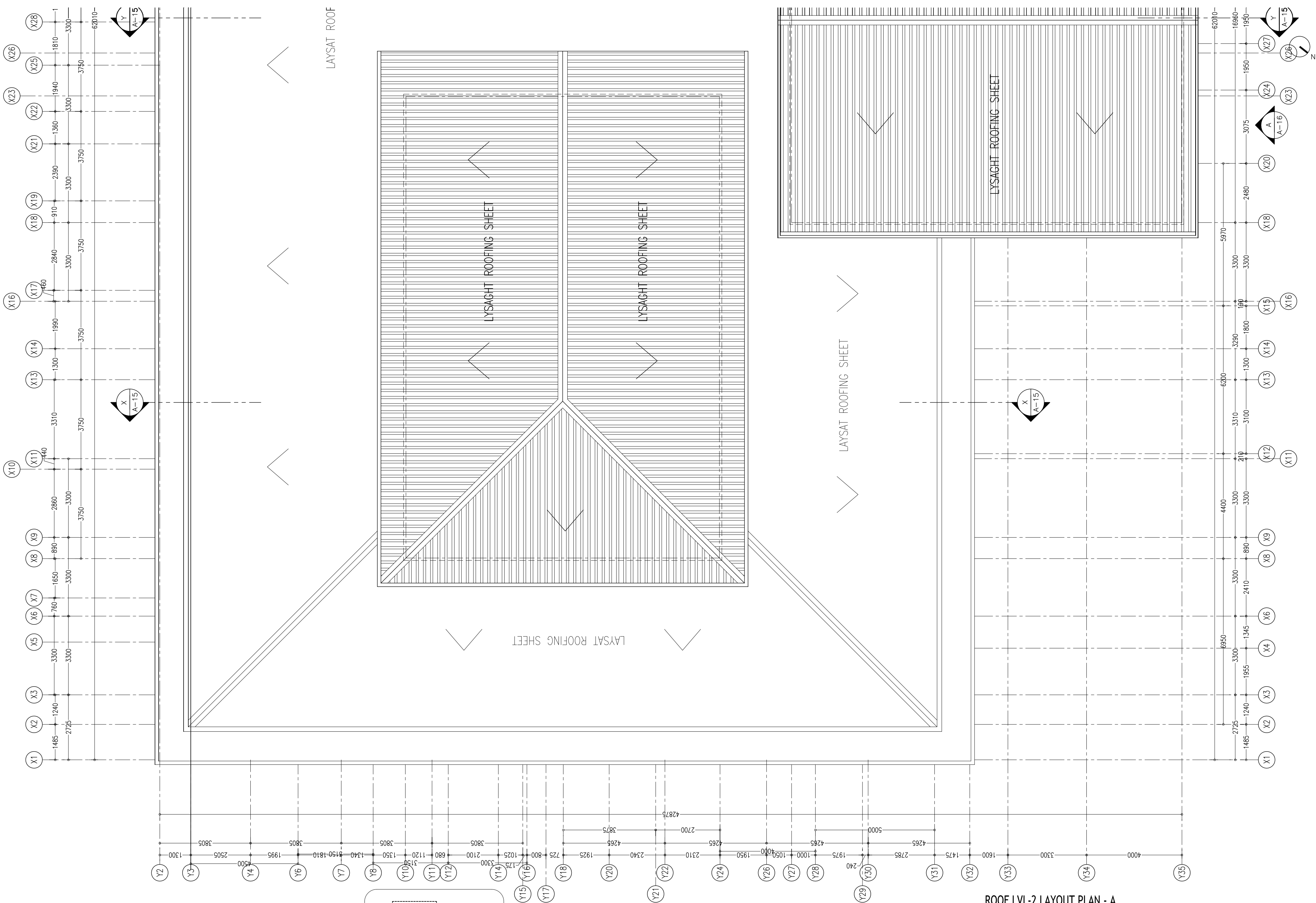


CONTRACTORS MUST
CHECK ALL
DIMENSIONS ON SITE
BEFORE STARTING
ANY WORK OR SHOP
DRAWINGS FIGURED
DIMENSIONS TO TAKE
PRECEDENCE OVER
SCALE READINGS



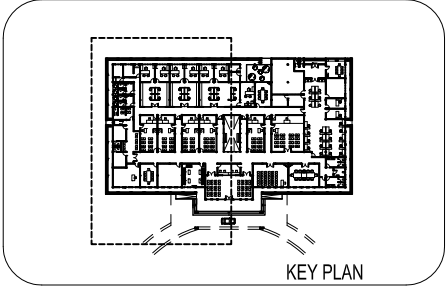
REVISION:	ARCHITECT: MOHAMED HAMEEN / BDR2014016A	PROJECT:	PROPOSED NEW MAGISTRATE COURT			<div>A-12</div> <div>DWG NO</div> <div>PROJECT NO.: 14-061</div>
	ENGINEER: MOHAMED AHSAN / BDR2014074E	LOCATION:	S.HITHADHOO			
	PRIMARY ENG: MARIYAM SAMAH / BDR2014053PE	DRAWING TITLE:	AS GIVEN			
	ESTIMATOR:	CLIENT:	DEPARTMENT OF JUDICIAL ADMINISTRATION			
	DRAWN BY: ASFAN AHMED/SHAMHAD SAEED	SCALE: AS GIVEN	DIMENSION: MM	DATE: OCTOBER 2014		
CONCEPT AND DESIGN IN THIS DRAWING ARE THE PROPERTIES OF ARCHING STUDIO PVT LTD. UNAUTHORIZED USE OR REPRODUCTION OF PART OF THE DESIGN DRAWINGS OR CONCEPT TO USE IN OTHER PROJECTS OR SITES OTHER THAN SPECIFIED ON THIS DRAWING IS PROHIBITED						

CONCEPT AND DESIGN IN THIS DRAWING ARE THE PROPERTIES OF ARCHENG STUDIO PVT LTD, UNAUTHORIZED USE OR REPRODUCTION OF PART OF THE DESIGN, DRAWINGS OR CONCEPT TO USE IN OTHER PROJECTS OR SITES OTHER THAN SPECIFIED ON THIS DRAWING IS PROHIBITED



ROOF LVL-2 LAYOUT PLAN - A

SCALE 1:100



CONTRACTORS MUST
CHECK ALL
DIMENSIONS ON SITE
BEFORE STARTING
ANY WORK OR SHOP
DRAWINGS FIGURED
DIMENSIONS TO TAKE
PRECEDENCE OVER
SCALE READINGS

ArchEng
studios
Ma Fiyajahaage, 1st floor, Male', Republic of Maldives
admin@archeng.biz

REVISION:	ARCHITECT: MOHAMED HAMEEN / BDR2014016A	PROJECT:	PROPOSED NEW MAGISTRATE COURT			<div>A-13</div> <div>DWG NO</div> <div>PROJECT NO.: 14-061</div>
	ENGINEER: MOHAMED AHSAN / BDR2014074E	LOCATION:	S.HITHADHOO			
	PRIMARY ENG: MARIYAM SAMAH / BDR2014053PE	DRAWING TITLE:	AS GIVEN			
	ESTIMATOR:	CLIENT:	DEPARTMENT OF JUDICIAL ADMINISTRATION			
	DRAWN BY: ASFAN AHMED/SHAMHAD SAEED	SCALE: AS GIVEN	DIMENSION: MM	DATE: OCTOBER 2014		
CONCEPT AND DESIGN IN THIS DRAWING ARE THE PROPERTIES OF ARCHING STUDIO PVT LTD. UNAUTHORIZED USE OR REPRODUCTION OF PART OF THE DESIGN DRAWINGS OR CONCEPT TO USE IN OTHER PROJECTS OR SITES OTHER THAN SPECIFIED ON THIS DRAWING IS PROHIBITED						

CONCEPT AND DESIGN IN THIS DRAWING ARE THE PROPERTIES OF ARCHENG STUDIO PVT LTD, UNAUTHORIZED USE OR REPRODUCTION OF PART OF THE DESIGN, DRAWINGS OR CONCEPT TO USE IN OTHER PROJECTS OR SITES OTHER THAN SPECIFIED ON THIS DRAWING IS PROHIBITED