

Proposed 12 Classroom Block at
S. Maradhoo (04 Storey)

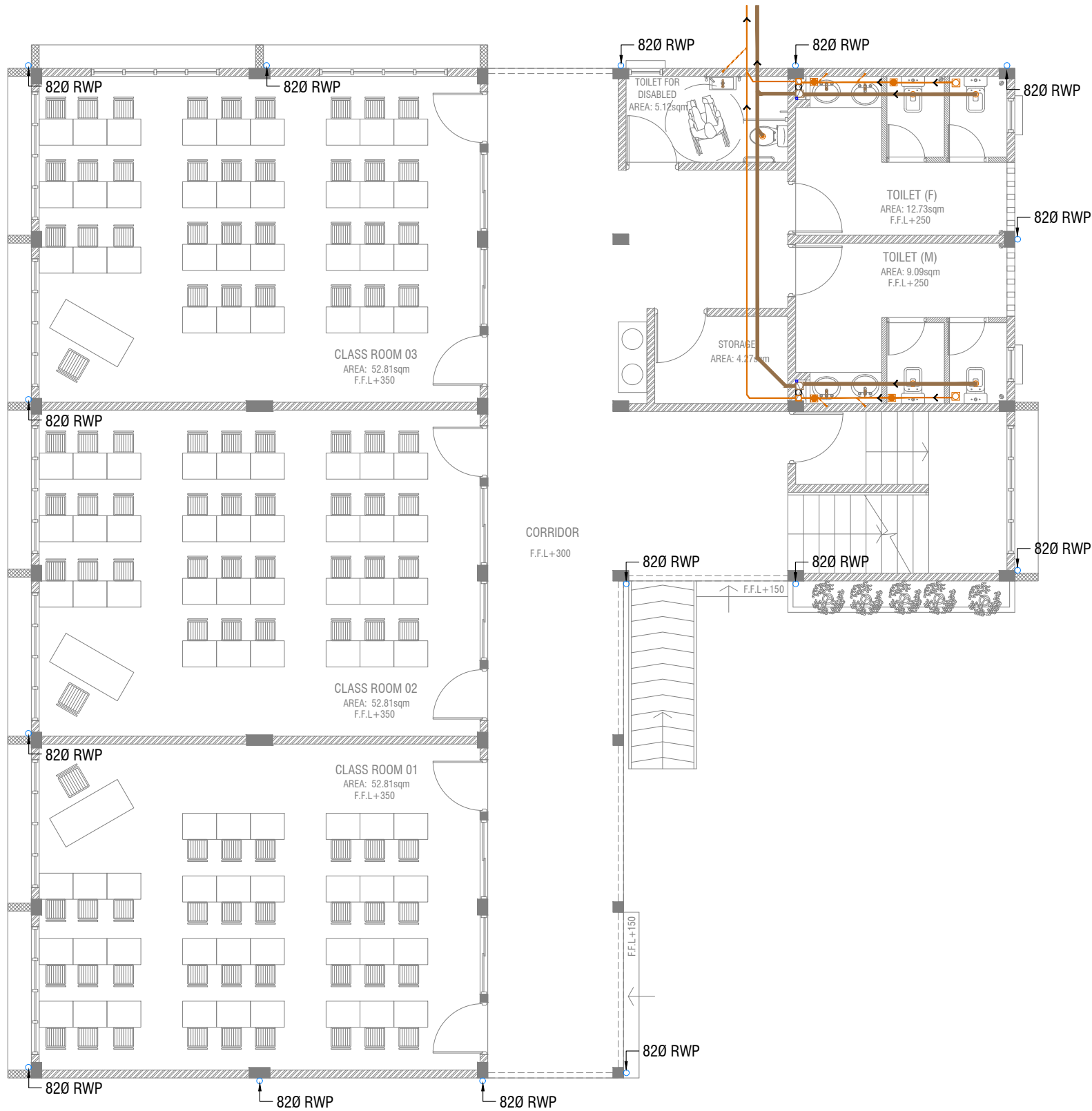
SERVICES DRAWING
Client: Ministry of Education



RIYAN PRIVATE LIMITED
t : +9603315049 f : +9603310776
e : info@riyan.com.mv
w : www.riyan.com.mv
3rd floor, H. Azum, Ameeremaagu, Male'

TABLE OF CONTENTS

DRAWING No.	TITLE	REVISION No.	DATE	REMARKS
A R C H I T E C T U R A L		---	---	---
DR - 01 /03	GROUND FLOOR DRAINAGE LAYOUT	---	---	---
DR - 02 /03	FIRST - THIRD FLOOR DRAINAGE LAYOUT	---	---	---
DR - 03 /03	ROOF DRAINAGE LAYOUT	---	---	---
PL - 01 / 02	GROUND FLOOR PLUMBING LAYOUT	---	---	---
PL - 02 / 02	FIRST - THIRD FLOOR PLUMBING LAYOUT	---	---	---
EL - 01 / 02	GROUND FLOOR LIGHTING LAYOUT	---	---	---
EL - 02 / 02	FIRST - THIRD FLOOR LIGHTING LAYOUT	---	---	---
EP - 01 / 02	GROUND FLOOR POWER LAYOUT	---	---	---
EP - 02 / 02	FIRST - THIRD FLOOR POWER LAYOUT	---	---	---



GROUND FLOOR DRAINAGE LAYOUT

SCALE 1:100



LEGEND

- FG ■ FLOOR GULLY
- FD □ FLOOR DRAIN
- WM ○ 40 Ø STUB FOR WASHING MACHINE
- SP — 110 Ø SOIL PIPE
- SVP ○ 110 Ø SOIL VENT PIPE
- WP — 82 Ø WASTE PIPE
- WVP ○ 82 Ø WASTE VENT PIPE
- WP — 40 Ø WASTE PIPE
- RWP — 110 Ø RAINWATER PIPE
- CD — 25 Ø DRAIN PIPE
- MHVP — 50 Ø MANHOLE VENT PIPE

S. Maradhoo - 12 Classroom (4 Storey)
Client: Ministry of Education

Project Number: RI/2017/012

Date: October 2019

Architect: Razana Amir

Engineer: Ahmed Zuhair Zaeem

Drawn by: Razana Amir

Services: Aishath Ahmed

Rev no

Date

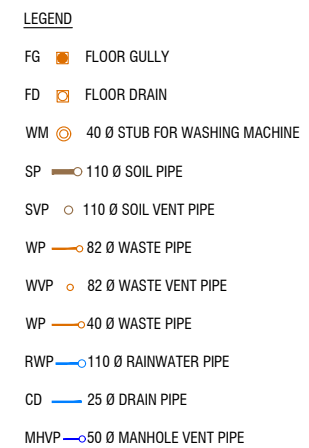


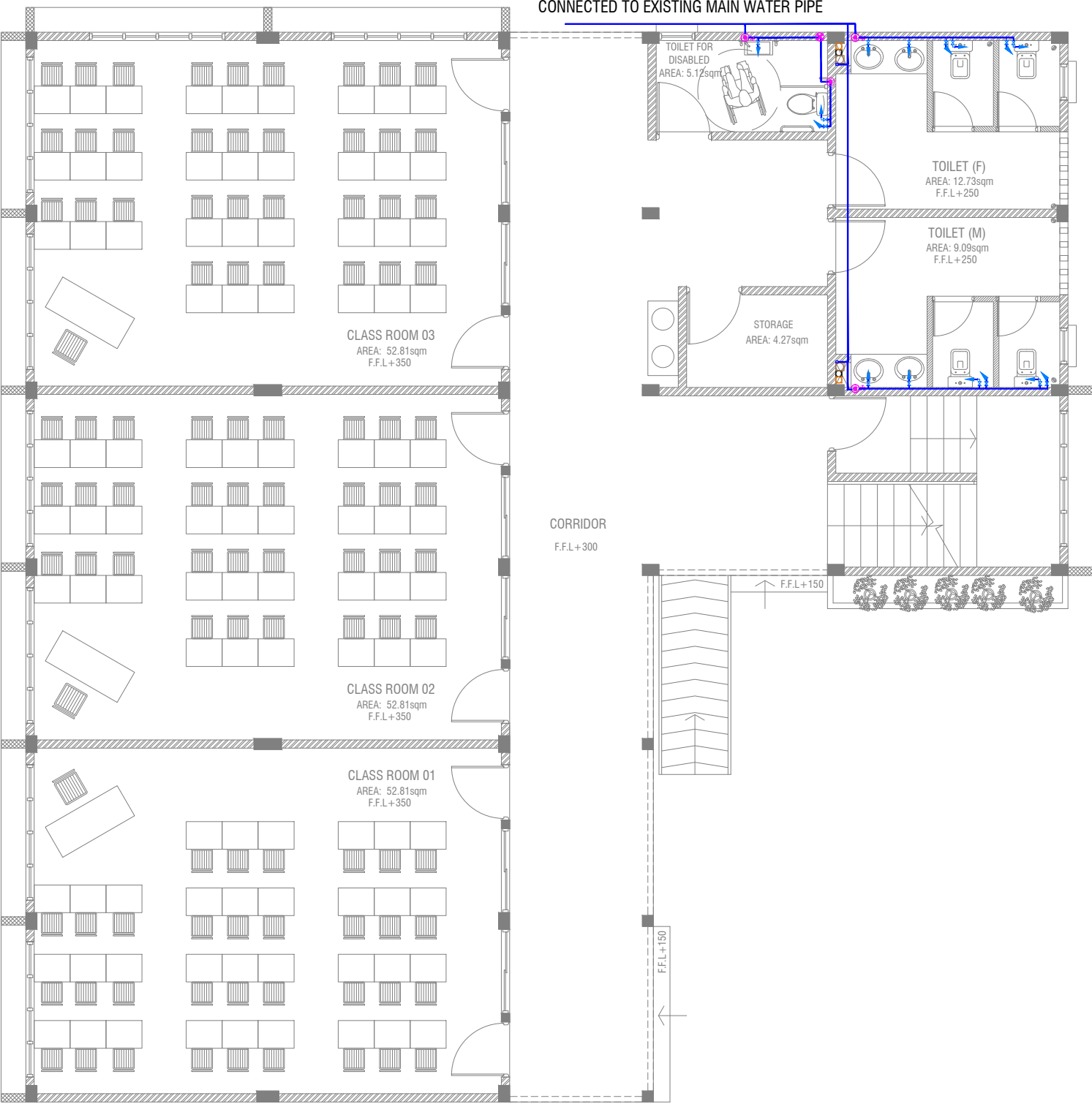
RIYAN PRIVATE LIMIT

t: +9603315049 f: +960331077
e: info@riyan.com.mv
w: www.riyan.com.mv
3rd floor, H. Azum, Ameenemagui, I

Title: Ground Floor
Drainage Layout

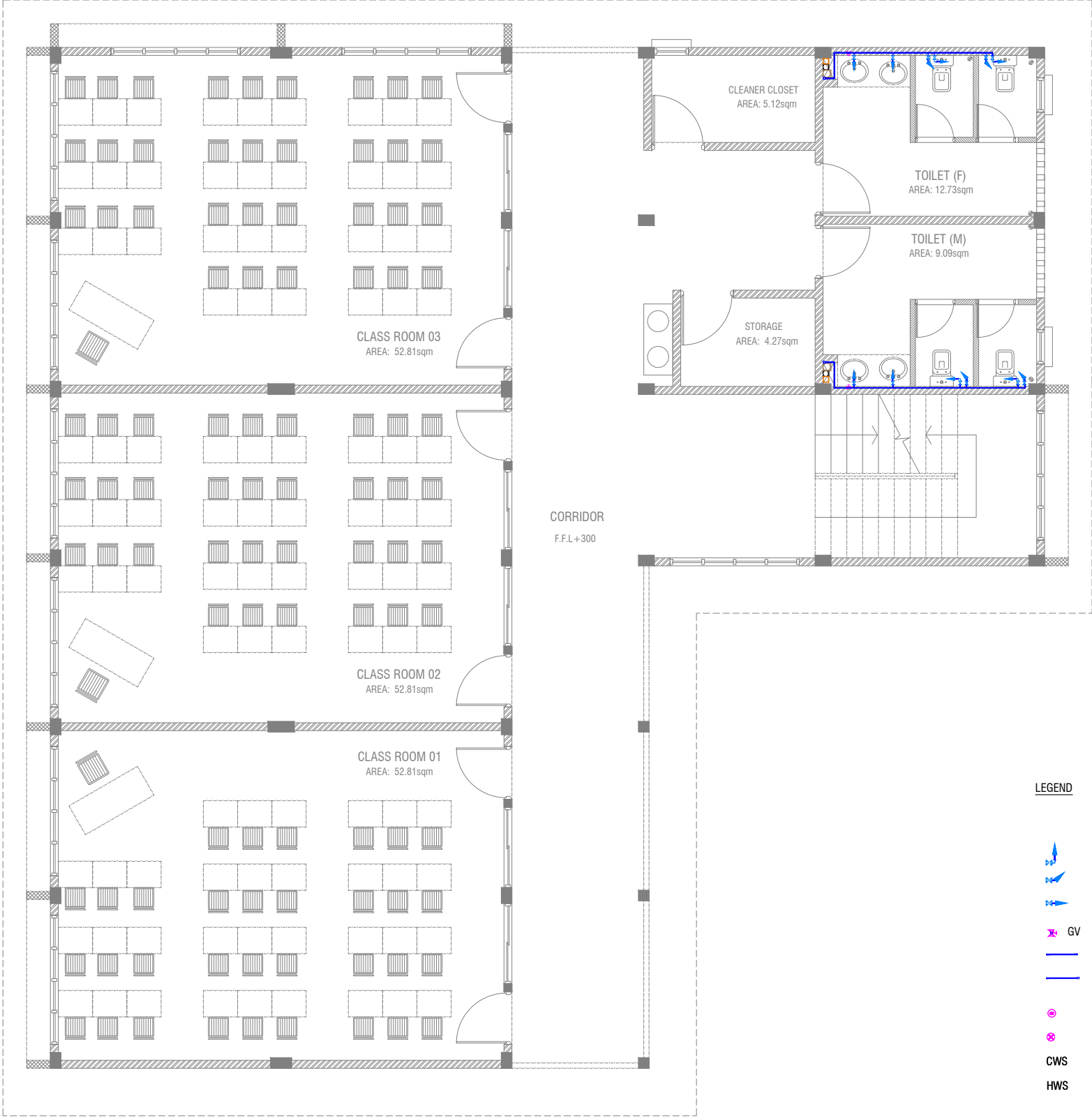
Page: DR 01-03





- LEGEND**
- 16 Ø COLD WATER SUPPLY TO CISTERN
 - 16 Ø COLD WATER SUPPLY TO BIDET SHOWER
 - 16 Ø COLD WATER SUPPLY TO BASIN FAUCET / SINK
 - GV GATE VALVE
 - 25 Ø COLD WATER SUPPLY PIPES RUN UNDERGROUND
 - 25 Ø COLD WATER SUPPLY PIPES RUN IN WALL / UNDER FALSE CEILING
 - RISE IN WALL
 - DROP IN WALL
 - CWS COLD WATER SUPPLY
 - HWS HOT WATER SUPPLY

GROUND FLOOR PLUMBING LAYOUT
SCALE 1:100



- LEGEND**
- 16 Ø COLD WATER SUPPLY TO CISTERN
 - 16 Ø COLD WATER SUPPLY TO BIDET SHOWER
 - 16 Ø COLD WATER SUPPLY TO BASIN FAUCET / SINK
 - GV GATE VALVE
 - 25 Ø COLD WATER SUPPLY PIPES RUN UNDERGROUND
 - 25 Ø COLD WATER SUPPLY PIPES RUN IN WALL / UNDER FALSE CEILING
 - RISE IN WALL
 - DROP IN WALL
 - CWS COLD WATER SUPPLY
 - HWS HOT WATER SUPPLY

FIRST - THIRD FLOOR PLUMBING LAYOUT

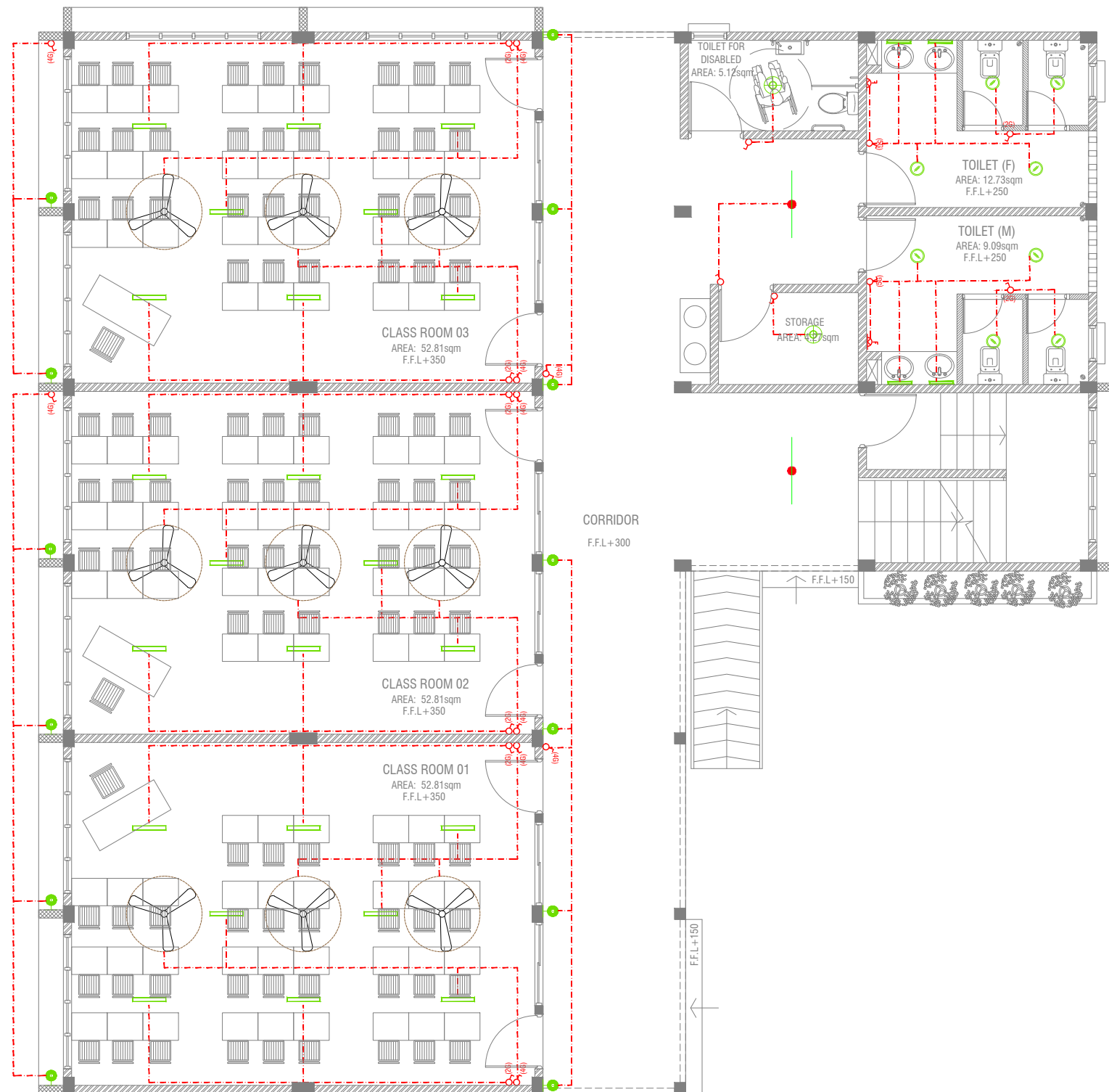
SCALE 1:100

0 0.5 1 2 3 4 5

S. Maradhoo - 12 Classroom (4 Storey)
Client: Ministry of Education
Project Number: RI/2017/012
Date: October 2019
Architect: Razana Amir
Engineer: Ahmed Zuhail Zaeem
Drawn by: Razana Amir
Services: Aishath Ahmed

Rev no	Date
1	
2	
3	
4	
5	

RIYAN PRIVATE LIMIT
t: +9603315049 f: +960331077
e: info@riyan.com.mv
w: www.riyan.com.mv
3rd floor, H. Azum, Ameenemagu, I



LEGEND

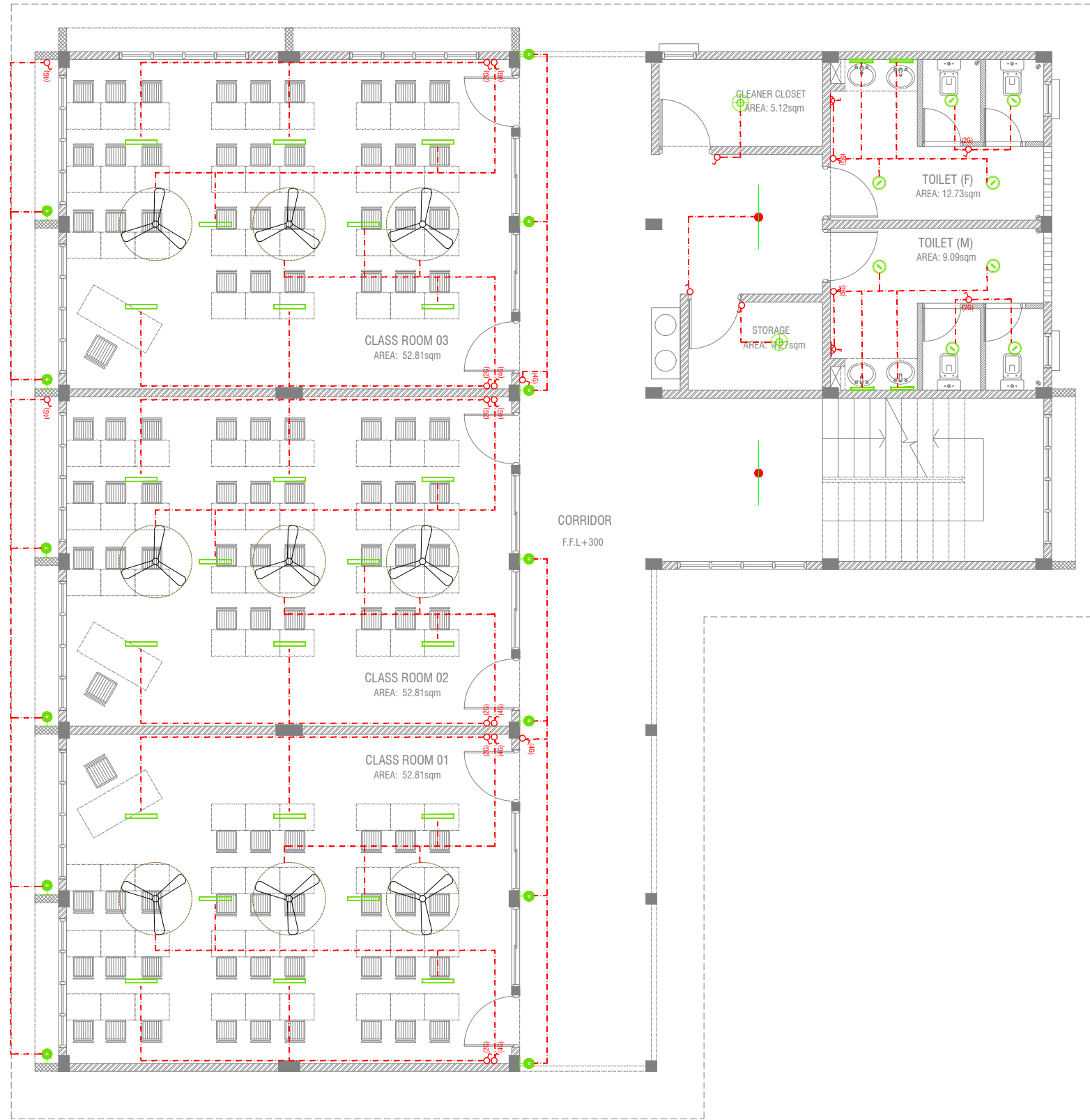
WPD OUT DOOR WALL LIGHT
ML MIRROR LIGHT (7W LED LIGHT)
H2 RECESSED DOWN LIGHT 12W
CL CEILING LIGHT 18W CFL
WP 2 X 4' TUBE LIGHT WITH WEATHER PROOF OPAL CASING
C2 CEILING DOWN LIGHT (18W)
LIGHT SWITCH
SWITCHING LINE
CL2 2 X 4' FLUORESENT LIGHT WITH OPAL CASING

CEILING FAN (52" - 54")

NOTE:

- ALL WIRING TO BE OF STELCO APPROVED STANDARDS
- SWITCH CONTROL = 1200MM FROM FLOOR FIN. LEVEL
- ALL LIGHTING POINTS CONNECTED TO THEIR RESPECTIVE DB

GROUND FLOOR LIGHTING LAYOUT
SCALE 1:100



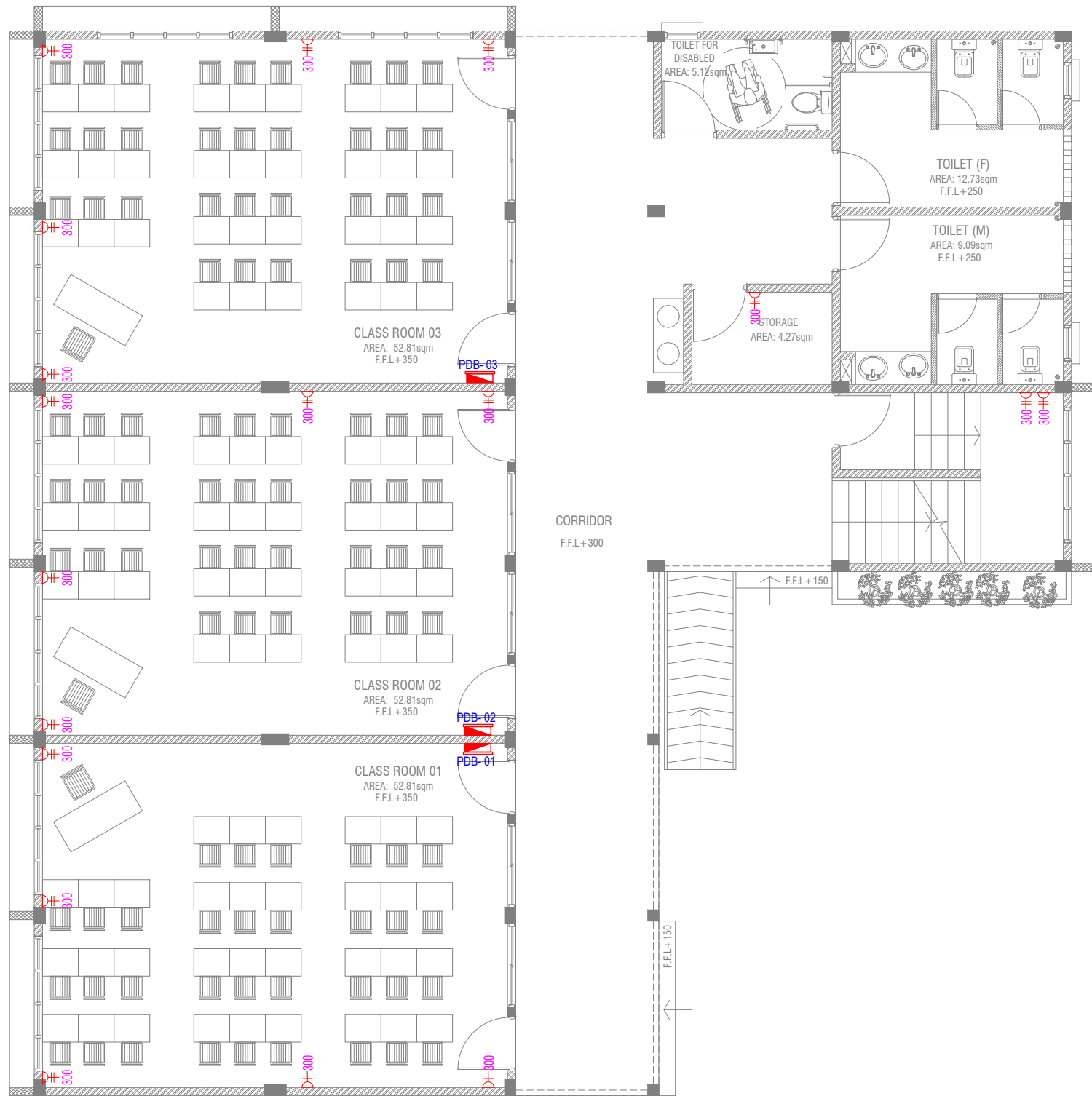
- LEGEND**
- WPD OUT DOOR WALL LIGHT
 - ML MIRROR LIGHT (7W LED LIGHT)
 - H2 RECESSED DOWN LIGHT 12W
 - CL CEILING LIGHT 18W CFL
 - WP 2 X 4' TUBE LIGHT WITH WEATHER PROOF OPAL CASING
 - C2 CEILING DOWN LIGHT (18W)
 - LIGHT SWITCH
 - SWITCHING LINE
 - CL2 2 X 4' FLUORESENT LIGHT WITH OPAL CASING
 - CEILING FAN (52" - 54")

NOTE:

- ALL WIRING TO BE OF STELCO APPROVED STANDARDS
- SWITCH CONTROL = 1200MM FROM FLOOR FIN. LEVEL
- ALL LIGHTING POINTS CONNECTED TO THEIR RESPECTIVE DB

FIRST - THIRD FLOOR LIGHTING LAYOUT
SCALE 1:100

S. Maradhoo - 12 Classroom (4 Storey)
Client: Ministry of Education
Project Number: RI/2017/012
Date: October 2019
Architect: Razana Amir
Engineer: Ahmed Zuhair Zaeem
Drawn by: Razana Amir
Services: Alshath Ahmed



GROUND FLOOR POWER LAYOUT



LEGEND

- PHONE EXTENSION
 - COMPUTER NETWORK OUTLET (RJ 45 CONNECTORS)
 - TELEPHONE OUTLET (RJ11, CONNECTOR)
 - 13A POWER OUTLET
 - 13A TWIN SOCKET OUTLET
 - TPN ISOLATOR
 - VGA CABLE FOR PROJECTOR
 - DISTRIBUTION BOX
 - 15A.SWITCHED/ SPUR UNIT @ H.L.
 - TWO GANG TV/SAT SOCKET OUTLET
 - HL. HIGH LEVEL
 - WPE WEATHER PROOF POLYCARBONATE ENCLOSURE
- ALL ELECTRICAL COMPONENT TO BE CONNECTED TO THEIR RESPECTIVE DB



- LEGEND**
- PHONE EXTENSION
 - COMPUTER NETWORK OUTLET (RJ 45 CONNECTORS)
 - TELEPHONE OUTLET (RJ11, CONNECTOR)
 - 13A POWER OUTLET
 - 13A TWIN SOCKET OUTLET
 - TPN ISOLATOR
 - VGA CABLE FOR PROJECTOR
 - DISTRIBUTION BOX
 - 15A.SWITCHED/ SPUR UNIT @ H.L.
 - TWO GANG TV/SAT SOCKET OUTLET

HL. HIGH LEVEL
WPE WEATHER PROOF POLYCARBONATE ENCLOSURE

ALL ELECTRICAL COMPONENT TO BE CONNECTED TO THEIR RESPECTIVE DB

FIRST - THIRD FLOOR POWER LAYOUT
SCALE 1:100



S. Maradhoo - 12 Classroom (4 Storey)
Client: Ministry of Education
Project Number: RI/2017/012
Date: October 2019
Architect: Razana Amir
Engineer: Ahmed Zuhail Zaeem
Drawn by: Razana Amir
Services: Aishath Ahmed

Rev no	Date
1	
2	
3	