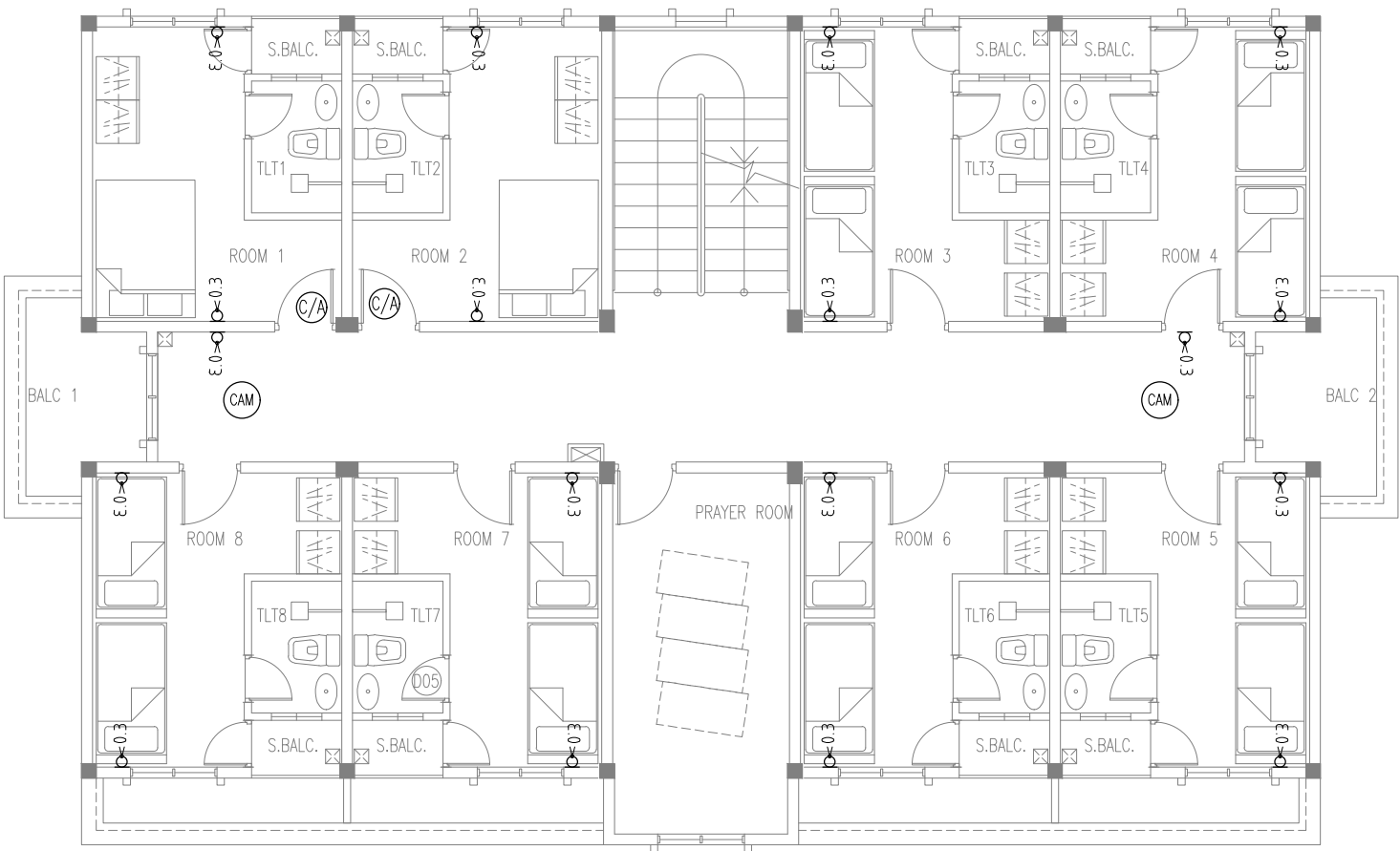


POWER & NETWORK LEGENDS	
	POWER SOCKET 2.4M (2GNG)
	POWER SOCKET 1.2M (2GNG)
	POWER SOCKET 0.3M (2GNG)
	POWER SOCKET[WEATHER PROOF] 0.3M (2GNG)
	POWER SOCKET[WEATHER PROOF] 1.2M (2GNG)
	POWER SOCKET 0.3M 15 AMPERE (2GNG)
	POWER SOCKET 1.2M 15 AMPERE (2GNG)
	POWER SOCKET[WEATHER PROOF] 2.4M (2GNG)
	INTRANET DOUBLE GANG WITH SEPARATE CABLE
	CCTV CAMERA POINT
	CABLE TV POINT
	CONTROLLED [CARD] ACCESS POINT
	RACK UNIT



FIRST FLOOR POWER AND NETWORK LAYOUT

SCALE 1:100

PROJECT TITLE:

NAIFARU POLICE ACCOMMODATION

APPROVED

DESIGN APPROVED BY:

RECOMMENDATION APPROVED

THE DRAWINGS,CONCEPT AND DESIGN CONTAINED AREA THE PROPERTIES OF MALDIVES POLICE SERVICE.USE OF ANY KIND OR COPY OF WHOLE OR PART OF THIS DRAWING CONCEPT OR DESIGN OR USE ON OTHER PROJECTS OR SITES OTHER THAN THAT SPECIFIED ON THIS DRAWINGS IS STRICTLY PROHIBITED

ARCHITECT/DESIGNER	DRAFTED BY
ASSISTANT DIRECTOR AHMED SADHEEM	SUB INSP OF POLICE MOHAMED FALAAH
STRUCTURAL ENGINEER	DRAFTED BY
SUB INSP OF POLICE FAZEEN	SUB INSP OF POLICE MOHAMED FALAAH
CHECKED BY	CHECKED BY
ASSISTANT DIRECTOR AHMED SADHEEM	SUB INSP OF POLICE AHMED NIZAL
ARCHITECTURAL DRAWINGS	
SHEET NO.	DATE: 19 AUG 2021

N-02