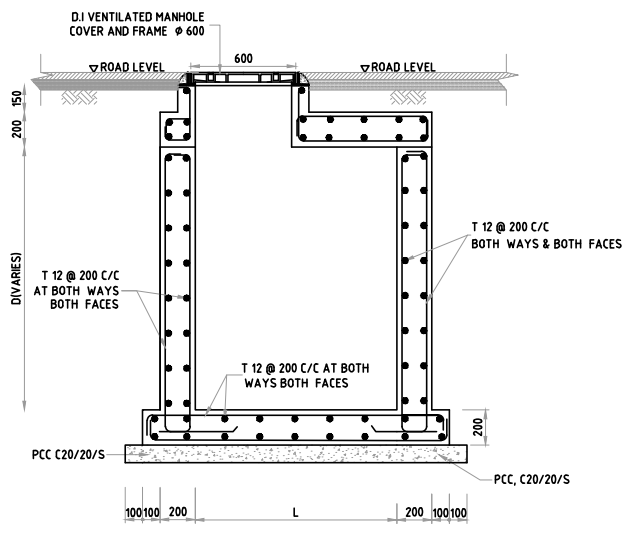


SECTION A-A  
SCALE 1:20



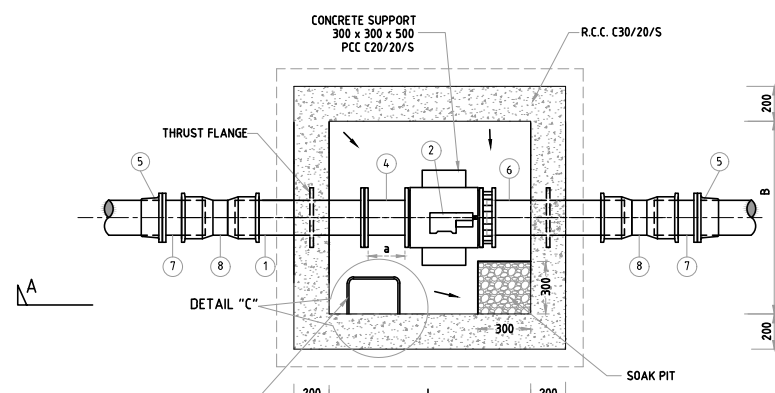
REINFORCEMENT DETAILS AT SECTION C-C  
SCALE 1:20

SCHEDULE OF SPECIALS AND FITTINGS

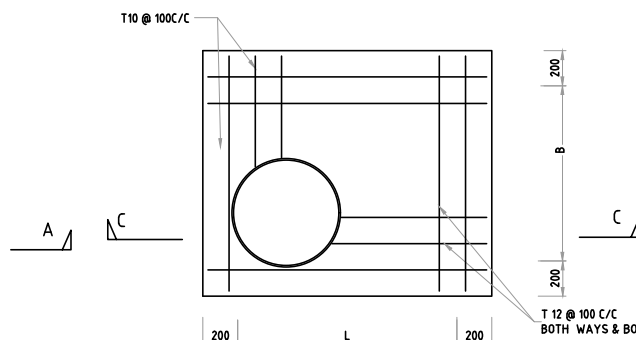
ITEM	SPECIALS AND FITTINGS	QTY
1	DI - SPIGOT PIPE WITH WELDED THRUST FLANGE	1
2	FLOW METER	1
3	FLANGED ADAPTOR	1
4	DI FLANGED-SPIGOT PIECE	1
5	DI/PE ADAPTOR	2
6	DI FLANGED SPIGOT PIPE WITH WELDED PUDDLE FLANGE	1
7	DI SHORT LENGTH FLANGED SPIGOT PIECE	2
8	DI COLLAR	2

DIMENSIONS OF VALVE CHAMBER

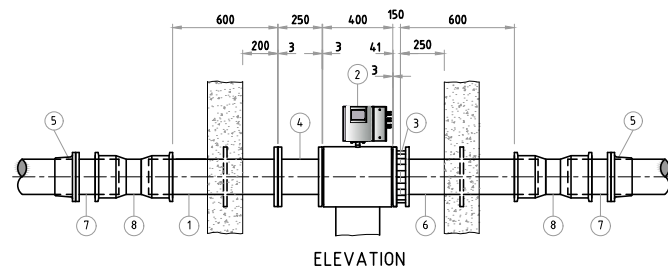
Dia of Pipe (d)	L	B	a
80-200	1200	1200	250
250	1450	1250	425
300	1750	1300	650
350	2000	1350	875
400	2300	1400	1100
450	2500	1450	1325
500	2850	1500	1575



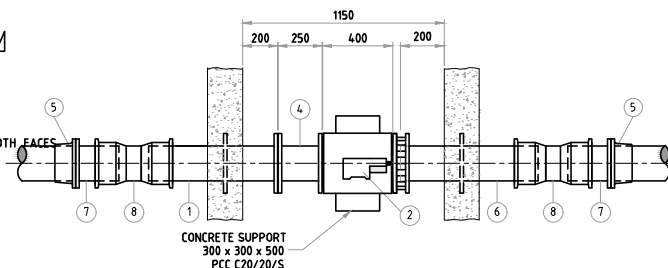
SECTION PLAN B-B  
SCALE 1:20



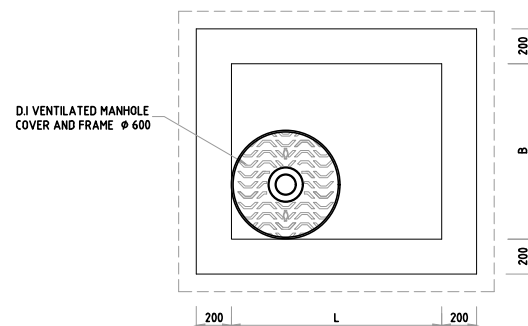
REINFORCEMENT DETAILS OF COVER SLAB  
SCALE 1:20



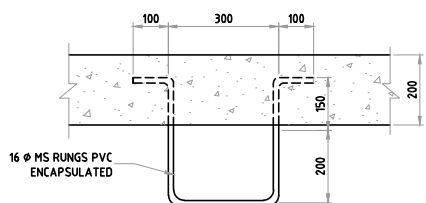
ELEVATION



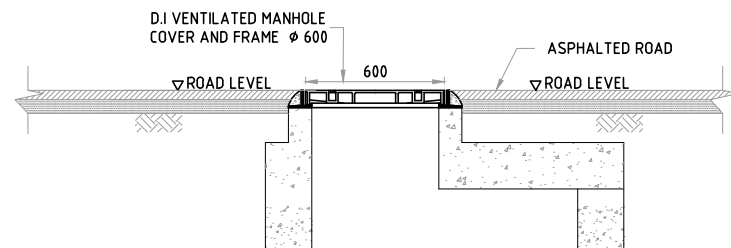
PLAN  
GENERAL ARRANGEMENT & FITTINGS OF FLOW METER FOR Ø200 PIPE  
SCALE 1:20



ROOF PLAN  
SCALE 1:20



DETAIL - C  
T16 MS RUNGS PVC ENCAPSULATED  
SCALE 1:10



DETAILS OF COVER IN ASPHALT PAVEMENT  
SCALE 1:15

TENDER PURPOSE

- All dimensions are in mm
- For location and depths of Gate valve chamber refer to drawings of pipeline plans and profiles.
- The specials and pipe fittings shall be selected to suit the supply pipe line
- All the valves, specials and pipes inside the chamber should be of Ductile iron
- Flow meter shall comply with BS 5150
- DI pipe & Fitting shall comply with BS 4772
- Building materials:-  
Description of building materials is as follows  
Compressive strength of concrete  $C 30 / 20 / S$  Sulphate resistant cement  
maximum size of aggregate

- Concrete:  
a. mixes shall comply with BS 8110  
b. minimum 28 day characteristic strength in accordance with BS 8110
- Cover to reinforcement to be 50mm.
- The steel used shall be of fy 350 grade.
- The tanking shall be with two layers of Bituminous Paint for external surfaces of Valve chamber
- Gate Valve Chamber to be provided for Pipe dia 200 to 300 mm
- MH Cover Should Comply to BS EN 124 Class D400

ABBREVIATIONS

- PIL - PIPE INVERT LEVEL.  
MS - MILD STEEL.  
DI - DUCTILE IRON.  
PE - POLY ETHYLENE  
RCC - REINFORCED CEMENT CONCRETE  
PCC - PLAIN CEMENT CONCRETE

					CLIENT MINISTRY OF ENVIRONMENT AND ENERGY MALÉ REPUBLIC OF MALDIVES				
					PROJECT PROVISION OF RAINWATER HARVESTING SYSTEM IN 9 ISLANDS				
					ASSIGNMENT CONSULTANCY SERVICES FOR DESIGN AND SUPERVISION OF RAINWATER HARVESTING SYSTEM IN TH. VANDHOO, TH. GAADHIFUSHI, TH. OMADHOO, TH. KANDOODHOO, TH. KINIDHOO, TH. DHYAMGILI, M. RAYMANDHOO, M. VEYVAH, M. NAALAFUSHI, MALDIVES [PACKAGE - 4]				
					DRAWING TITLE STANDARD DRAWING OF BULK FLOW METER CHAMBER				
					APPROVED SSS SCALE AS SHOWN				
					CHECKED SSS DATE FEB 2018				
					DESIGNED SPP				
					DRAWN PDP				
					REVISION				
					CONSULTANT SHAH TECHNICAL CONSULTANTS PVT. LTD., INDIA IN ASSOCIATION WITH DEVELOPMENT TECHNOLOGIES MALDIVES, MALDIVES				
					DRAWING NUMBER WS/STD/01				
					REVISION 0				