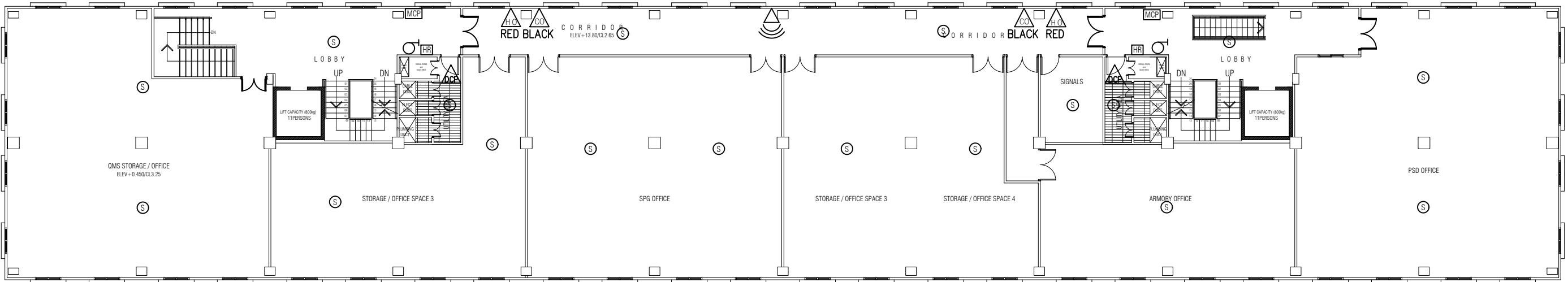


GROUND FLOOR  
**FIRE LAYOUT**  
SCALE 1:200



FIRST FLOOR  
**FIRE LAYOUT**  
SCALE 1:200

LEGEND:

SYMBOL	QUANTITY	DESCRIPTION
①	09	00 HEAT DETECTOR
②	09	18 SMOKE DETECTOR
③	02	02 HOSE REEL (30M LENGTH) W/HOT AIR RELEASING VALVE ON TOP FLOOR
④	02	02 MANUAL CALL POINT
⑤	03	02 CO2 (2kg)
⑥	01	02 WATER
⑦	05	02 DRY CHEMICAL POWDER (6kg DCP)
⑧	02	01 SOUNDER STROBE (db 85)
⑨	02	02 DRY RISER OUTLET W/CABINET HOSE AND NOZZLE
⑩	01	00 DRY RISER INLET(TWO WAY BREECHING INLET W/VALVE)
⑪	00	03 FIRE DOOR (WIDTH 1500)
⑫	00	01 FIRE DOOR (WIDTH 1200)

9 STOREY ACCOMMODATION BUILDING

BANDAARA KOSHI / MALE'

SHEET CONTENT:

RECOM. APPROVAL:

CPT. AHMED SHARIM  
OFFICER COMMANDING

DESIGN APPROVAL:

BRIG.GEN.AHMED SHAHID  
VICE CHIEF OF DEFENCE FORCE

APPROVED:

MAJ.GEN. AHMED SHIYAM  
CHIEF OF DEFENCE FORCE

APPROVED DATE:

DESIGNED:

PTE MOHAMED SAIF  
L.CPL ALI MUTHASIM  
Architectural

WO1 AHMED SHAZEEL  
Structural

CHECKED:

CPT MOHAMED SHIFAAU  
Architectural

WO3 AIMINATH ALI  
Structural

Electrical & Mechanical      Communication

DRAWN:

PTE MOHAMED SAIF  
L.CPL ALI MUTHASIM

07/08/2016

REVISION:

PTE YAMIN SAEED  
PTE HUSSAIN QASIM

25/01/2017

SCALE:

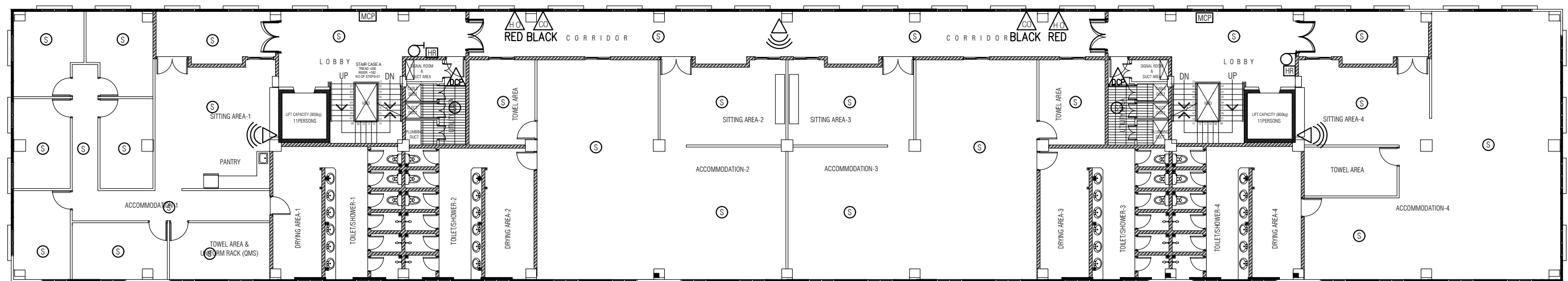
1:200

SHEET NO:

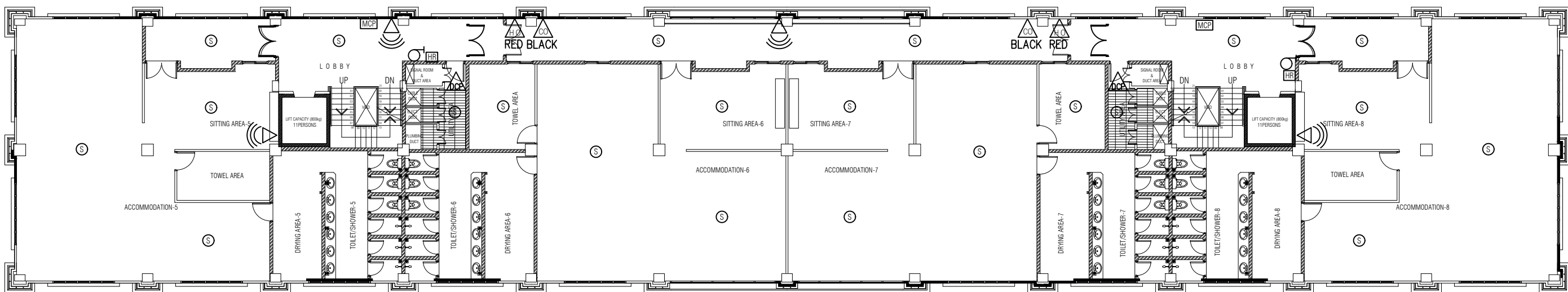


MILITARY ENGINEERS  
MALDIVES NATIONAL DEFENCE FORCE  
Male', Republic of Maldives

The drawings, concept and design contained are the properties of Military Engineers MNDf . Use of any kind or copy of whole or part of this drawing, concept or design or use on other projects or sites other than that specified on this drawing is strictly prohibited.



SECOND FLOOR  
FIRE LAYOUT  
SCALE 1:200



THIRD FLOOR  
FIRE LAYOUT  
SCALE 1:200

LEGEND:

SYMBOL	QUANTITY	DESCRIPTION
28	22	SMOKE DETECTOR
02	02	HOSE REEL (30M LENGTH)W/HOT AIR RELEASING VALVEON TOP FLOOR
02	02	MANUAL CALL POINT
02	02	CO2 (2kg)
02	02	WATER
02	02	DRY CHEMICAL POWDER (8kg DCP)
03	03	SOUNDER STROBE (db 75)
02	02	DRY RISER INLET(TWO WAY BREECHING INLET W/VALVE)
04	04	FIRE DOOR (WIDTH 1500)

9 STOREY ACCOMMODATION BUILDING

BANDAARA KOSHI / MALE'

SHEET CONTENT:

RECOM. APPROVAL:

CPT. AHMED SHARIM  
OFFICER COMMANDING

DESIGN APPROVAL:

BRIG.GEN.AHMED SHAHID  
VICE CHIEF OF DEFENCE FORCE

APPROVED:

MAJ.GEN. AHMED SHIYAM  
CHIEF OF DEFENCE FORCE

APPROVED DATE:

DESIGNED:

PTE MOHAMED SAIF  
L.CPL ALI MUTHASIM  
Architectural

WO1 AHMED SHAZEEL  
Structural

CHECKED:

CPT MOHAMED SHIFAAU  
Architectural

WO3 AIMINATH ALI  
Structural

Electrical & Mechanical

Communication

DRAWN:

PTE MOHAMED SAIF  
L.CPL ALI MUTHASIM

07/08/2016

REVISION:

PTE YAMIN SAEED  
PTE HUSSAIN QASIM

25/01/2017

SCALE:

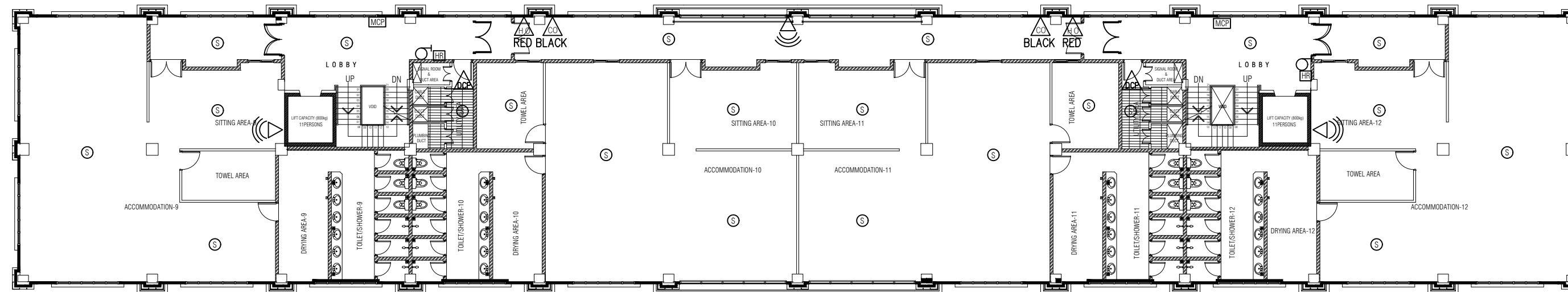
1:200

SHEET NO:

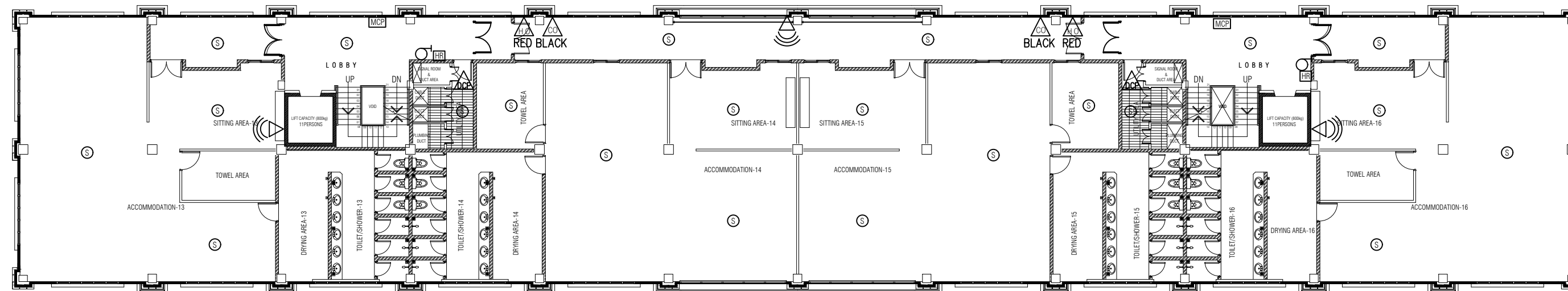


MILITARY ENGINEERS  
MALDIVES NATIONAL DEFENCE FORCE  
Male', Republic of Maldives

The drawings, concept and design contained are the properties of Military Engineers MNDF . Use of any kind or copy of whole or part of this drawing, concept or design or use on other projects or sites other than that specified on this drawing is strictly prohibited.



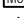
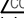







FOURTH FLOOR  
**FIRE LAYOUT**  
SCALE 1:200



 NORTH

FIFTH & SIXTH FLOOR  
**FIRE LAYOUT**  
SCALE 1:200

LEGENDE:				DESCRIPTION
SYMBOL	QUANTITY 4TH	5TH	6TH	
	20	20	20	SMOKE DETECTOR
	02	02	02	HOSE REEL (30M LENGTH)/W/HOT AIR RELEASING VALVE/TOP FLOOR
	02	02	02	MANUAL CALL POINT
	02	02	02	CO2 (2kg)
	02	02	02	WATER
	02	02	02	DRY CHEMICAL POWDER (8kg DCP)
	02	02	02	SOUNDER STROBE
	02	02	02	DRY RISER INLET (TWO WAY BREECHING INLET W/VALVE)
	04	04	04	FIRE DOOR (WIDTH 1500)

## 9 STOREY ACCOMMODATION BUILDING

BANDAARA KOSHI / MALE\*

SHEET CONTENT:

RECOM. APPROVAL:

**CPT. AHMED SHARIM**  
OFFICER COMMANDING

DESIGN APPROVAL:

**BRIG.GEN.AHMED SHAHID**  
VICE CHIEF OF DEFENCE FORCE

APPROVED:

**MAJ.GEN. AHMED SHIYAM**  
CHIEF OF DEFENCE FORCE

APPROVED DATE:

DESIGNED:

**PTE MOHAMED SAIF**  
**L.CPL ALI MUTHASIM**  
Architectural

**WO1 AHMED SHAZEEL**  
Structural

CHECKED:

**CPT MOHAMED SHIFAAU**  
Architectural

**WO3 AIMINATH ALI**  
Structural

Electrical & Mechanical Communication

DRAWN:

PTE MOHAMED SAIF  
L.CPL ALI MUTHASIM

REVISION:

PTE YAMIN SAEED  
PTE HUSSAIN QASIM

07/08/2016

25/01/2017

SCALE:

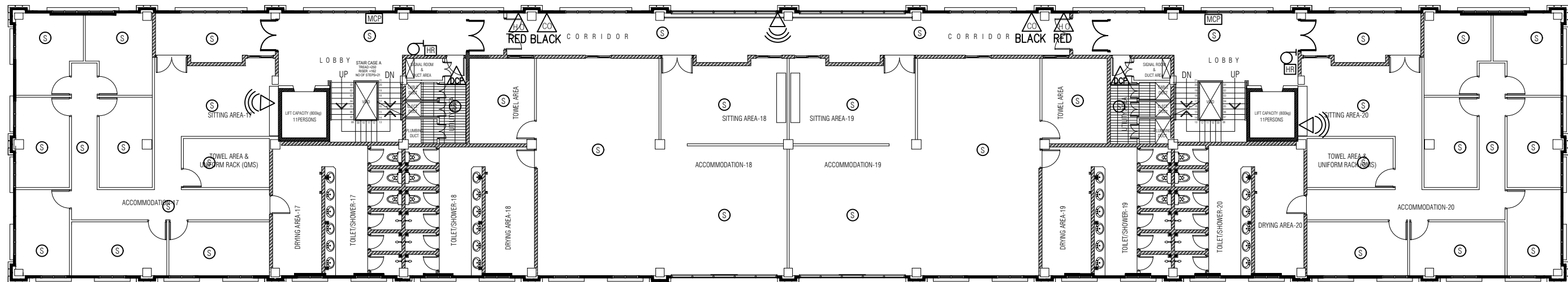
1:200

SHEET NO:

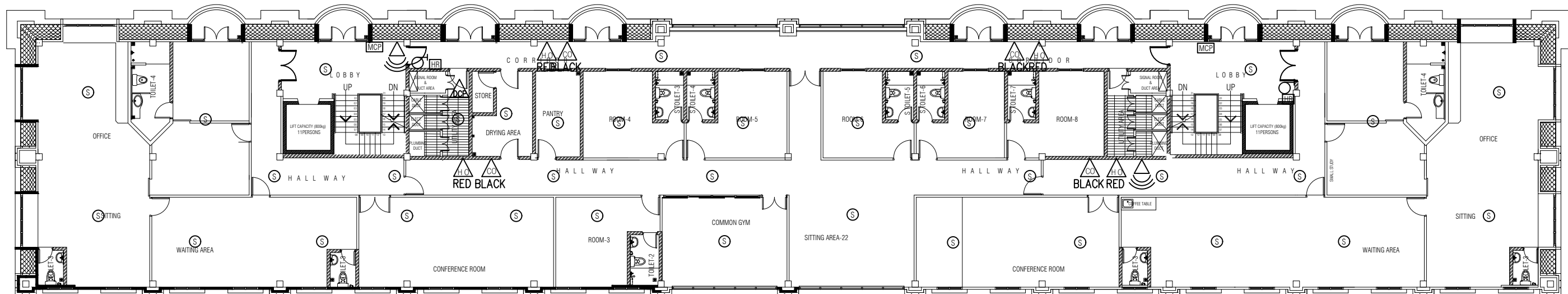


MILITARY ENGINEERS  
MALDIVES NATIONAL DEFENCE FORCE  
Male', Republic of Maldives

The drawings, concept and design contained are the properties of Military Engineers MNDF . Use of any kind or copy of whole or part of this drawing, concept or design or use on other projects or sites other than that specified on this drawing is strictly prohibited.



SEVENTH FLOOR  
**FIRE LAYOUT**  
SCALE 1:200



EIGHTH FLOOR  
**FIRE LAYOUT**  
SCALE 1:200

LEGEND:		SYMBOL		QUANTITY	DESCRIPTION
		7TH	8TH		
	36	37		02	SMOKE DETECTOR
	02	02		02	HOSE REEL (30M LENGTH)/W/HOT AIR RELEASING VALVE ON TOP FLOOR
	02	02		02	MANUAL CALL POINT
	04	04		04	CO2 (2kg)
	04	04		04	WATER
	02	02		02	DRY CHEMICAL POWDER (8kg DCP)
	03	02		02	SOUNDER-STROBE
	02	02		02	DRY RISER INLET(TWO WAY BREECING INLET W/VALVE)
	04	02		02	FIRE DOOR (WIDTH 1500)
	00	02		02	FIRE DOOR (WIDTH 900)

9 STOREY ACCOMMODATION BUILDING

BANDAARA KOSHI / MALE'

SHEET CONTENT:

RECOM. APPROVAL:

CPT. AHMED SHARIM  
OFFICER COMMANDING

DESIGN APPROVAL:

BRIG.GEN.AHMED SHAHID  
VICE CHIEF OF DEFENCE FORCE

APPROVED:

MAJ.GEN. AHMED SHIYAM  
CHIEF OF DEFENCE FORCE

APPROVED DATE:

DESIGNED:

PTE MOHAMED SAIF  
L.CPL ALI MUTHASIM  
Architectural

WO1 AHMED SHAZEEL  
Structural

CHECKED:

CPT MOHAMED SHIFAAU  
Architectural

WO3 AIMINATH ALI  
Structural

Electrical & Mechanical

Communication

DRAWN:

PTE MOHAMED SAIF  
L.CPL ALI MUTHASIM

07/08/2016

REVISION:

PTE YAMIN SAEED  
PTE HUSSAIN QASIM

25/01/2017

SCALE:

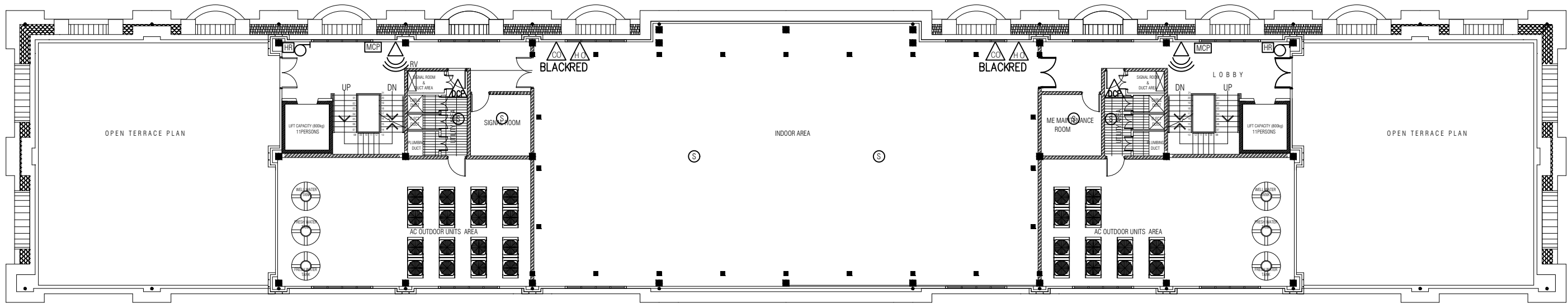
1:200

SHEET NO:



MILITARY ENGINEERS  
MALDIVES NATIONAL DEFENCE FORCE  
Male', Republic of Maldives

The drawings, concept and design contained are the properties of Military Engineers MNDF . Use of any kind or copy of whole or part of this drawing, concept or design or use on other projects or sites other than that specified on this drawing is strictly prohibited.



TERRACE FLOOR  
**FIRE LAYOUT**  
SCALE 1:200

LEGEND:		
SYMBOL	QUANTITY	DESCRIPTION
S	04	SMOKE DETECTOR
HR	02	HOSE REEL (30M LENGTH)W/HOT AIR RELEASING VALVEON TOP FLOOR
MCP	02	MANUAL CALL POINT
C2	02	CO2 (2kg)
W	02	WATER
SND	02	SOUNDER STROBE
RI	02	DRY RISER INLET(TWO WAY BREECING INLET W/VALVE)
RV	01	AIR RELEASING VALVE
FD	04	FIRE DOOR (WIDTH 1500)

9 STOREY ACCOMMODATION BUILDING

BANDAARA KOSHI / MALE'

SHEET CONTENT:

RECOM. APPROVAL:

CPT. AHMED SHARIM  
OFFICER COMMANDING

DESIGN APPROVAL:

BRIG.GEN.AHMED SHAHID  
VICE CHIEF OF DEFENCE FORCE

APPROVED:

MAJ.GEN. AHMED SHIYAM  
CHIEF OF DEFENCE FORCE

APPROVED DATE:

DESIGNED:

PTE MOHAMED SAIF  
L.CPL ALI MUTHASIM  
Architectural

WO1 AHMED SHAZEEL  
Structural

CHECKED:

CPT MOHAMED SHIFAAU  
Architectural

WO3 AIMINATH ALI  
Structural

Electrical & Mechanical

Communication

DRAWN:

PTE MOHAMED SAIF  
L.CPL ALI MUTHASIM

07/08/2016

REVISION:

PTE YAMIN SAEED  
PTE HUSSAIN QASIM

25/01/2017

SCALE:

1:200

SHEET NO:



MILITARY ENGINEERS  
MALDIVES NATIONAL DEFENCE FORCE  
Male', Republic of Maldives

The drawings, concept and design contained are the properties of Military Engineers MNDf . Use of any kind or copy of whole or part of this drawing, concept or design or use on other projects or sites other than that specified on this drawing is strictly prohibited.

DRAWING LIST		FIRE ALARM SYSTEM SYMBOLS	
	DESCRIPTIONS	SYMBOLS	DESCRIPTIONS
FA-00	DRAWING LIST & SYMBOLS		FIRE ALARM CONTROL PANEL
FA-01	FIRE ALARM SYSTEM RISER DIAGRAM		GRAPHIC ANNUNCIATOR BOARD
FA-02	FIRE ALARM GROUND FLOOR PLAN (PLOT A)		FIRE ALARM MODULE BOX
FA-03	FIRE ALARM MEZZANINE FLOOR PLAN (PLOT A)		HEAT DETECTOR
FA-04	FIRE ALARM 1st FLOOR PLAN (PLOT A)		SMOKE DETECTOR
FA-05	FIRE ALARM 2nd FLOOR PLAN (PLOT A)		HEAT ADDRESSABLE DETECTOR
FA-06	FIRE ALARM 3rd FLOOR PLAN (PLOT A)		SMOKE ADDRESSABLE DETECTOR
FA-07	FIRE ALARM 4th – 11thFLOOR PLAN (PLOT A)		ALARM BELL
FA-08	FIRE ALARM 12th FLOOR PLAN (PLOT A)		STROBE LIGHT W/ HORN
FA-09	FIRE ALARM ROOF FLOOR PLAN (PLOT A)		MANUAL STATION
			INDICATING LAMP
			END OF LINE RESISTANCE
			DETECTOR MODULE
			CONTROL MODULE
			MONITOR MODULE
			TELEPHONE JACK STATION
			SHORT CIRCUIT ISOLATE MODULE
			OUTPUT DRY CONTRACT CONTROL MODULE
			2x1.5 SQmm. THW. IN ø3/4” EMT.
			2x2.5 SQmm. THW. IN ø3/4” EMT.
			2C.-18AWG. Twisted Pair W/Shield IN ø3/4” Flex.
			HOSE REEL (30M LENGTH)W/HOT AIR RELEASING VALVEON TOP FLOOR
			MANUAL CALL POINT
			CO
			WATER
			FIRE BLANKET
			DRY RISER OUTLET W/CABINET HOSE AND NOZLE
			DRY RISER INLET(TWO WAY BREECHING INLET W/VALVE)
			SOUNDER STROBE
			SCHEDULE 40 FOR DRY RISER 100MM SCHEDULE 40 FOR HOSE REEL 50MM
			AIR RELEASING VALVEON TOP FLOOR

NOTE:

1. ALL FIRE FIGHTING WORKS SHALL BE EXECUTED IN COMPLIANCE WITH MNDF FIRE & RESCUE CODES/REQUIREMENT.
- 2.CONTRACTOR SHALL CO-ORDINATE ALL BUILDERS WORK R REQUIREMENT BASED ON DRAWINGS & MATERIAL SUBMITTAL APPROVAL AND ALLOW SUCH WORK UNDER HIS CONTRACT.
3. LOCATION OF SMOKE/HEAT DETECTORS TO BE CO-ORDINATED WITH FINAL APPROVED REFLECTED CEILING SHOP DRAWING.
4. FIRE EXTINGUISHERS SHALL BE PLACED SUCH THAT ST ANY POINT FROM THE BUILDING IT SHALL BE ACCESSIBLE WITHIN 80 FT.
5. SUPPORT SPACING, SEISMIC BRACING COMPLY WITH NSS STANDARD.
6. NOTES APPEARING ON OTHER DRAWING SHALL BE APPLICABLE FOR ALL THE FIRE FIGHTING DRAWINGS OF THIS PROJECT.
7. JOCKEY PUMP TO BE ON CITY/EMEGERNCY SUPPLY.
8. WATER FLOW DETECTOR SHALL BE 1”.(NPS)
9. ALL VALVES/FITING TO HAVE UL APPROVED LABEL.
10. SUPERVISORY SWITCH, PRESSURE SWITCH & FLOW SWITCH SHALL BE INTERFACED WITH FIRE ALARM PANEL. CONTRACTOR TO ALLOW NECESSARY RELAYS INDICATORS ON THE FIRE ALARM PANEL TO ESTABLISH INTERFACING.
11. FITTINGS, PIPES, VALVES, JOINTS AND ALL APPERTUNENCES FOR FIRE FIGHTING SYSTEM SHALL BE RATED FOR A MINIMUM 30.0 BAR PRESSURE.
12. LIFT MACHINE ROOM & ELECTRICAL ROOMS SHALL HAVE FIRE FIGHTING DRY POWDER BOTTLES .
13. FIRE PUMP INLET TO HAVE THE FOLLOWING ACCESSORIES STAINER, GATE VALVES AND GAUGES.
14. INCASE OF FIRE ALL AUTOMATIC DOOR LOCKS TO BE PROGRAMMED TO BE SET TO UNLOCK POSITION.
15. ALL DRY RISER PIPES TO BE 100 MM DIA , GALVANIZED SHEDULE 40 PIPES, HOSEREELS TO BE 30M MIN, WITH A NOZZLE OF 01 INCH NOZZLE.
16. FIRE RETARDANT CABLE.

SEQUENCE OF OPERATIONS

1. ON FALL IN PRESSURE ON THE PIPING NETWORK THE JOCKEY PUMP STARTS & MAINTAINS THE SET PRESSURE.
2. INSPITE OF THE JOCKEY PUMP OPERATION AND IF THERE IS A FURTHER FALL IN PRESSURE IN THE SYSTEM , THE MAIN ELECTRICAL FIRE PUMP STARTS, TO MAINTAIN THE SET PRESSURE.
3. FIRE PUMPS TO HAVE A CAPACITY OF 24 LITERS/MIN.

9 STOREY ACCOMMODATION BUILDING

BANDAARA KOSHI / MALE’

SHEET CONTENT:

RECOM. APPROVAL:

CPT. AHMED SHARIM  
OFFICER COMMANDING

DESIGN APPROVAL:

BRIG.GEN.AHMED SHAHID  
VICE CHIEF OF DEFENCE FORCE

APPROVED:

MAJ.GEN. AHMED SHIYAM  
CHIEF OF DEFENCE FORCE

APPROVED DATE:

DESIGNED:

PTE MOHAMED SAIF  
L.CPL ALI MUTHASIM  
Architectural

WO1 AHMED SHAZEEL  
Structural

CHECKED:

CPT MOHAMED SHIFAAU  
Architectural

WO3 AIMINATH ALI  
Structural

Electrical & Mechanical

Communication

DRAWN:

PTE MOHAMED SAIF  
L.CPL ALI MUTHASIM

07/08/2016

REVISION:

PTE YAMIN SAEED  
PTE HUSSAIN QASIM

25/01/2017

SCALE:

1:200

SHEET NO:



MILITARY ENGINEERS  
MALDIVES NATIONAL DEFENCE FORCE  
Male', Republic of Maldives

The drawings, concept and design contained are the properties of Military Engineers MNDF . Use of any kind or copy of whole or part of this drawing, concept or design or use on other projects or sites other than that specified on this drawing is strictly prohibited.