

SYMBOL	D1	TOTAL = 8 nos
OPENABLE AREA	—	m.sq.

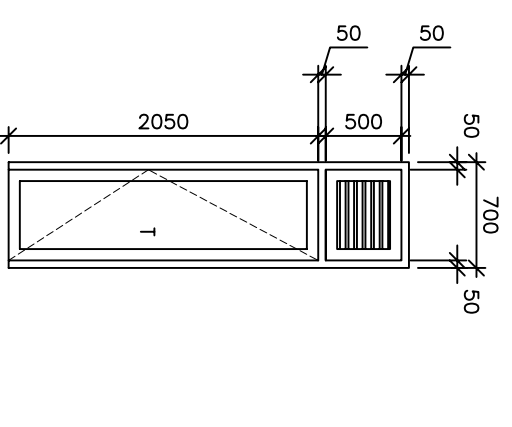
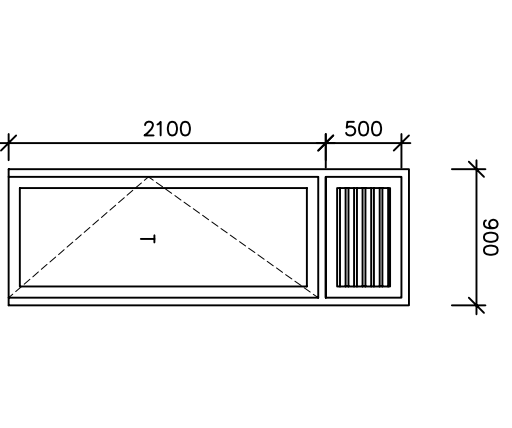
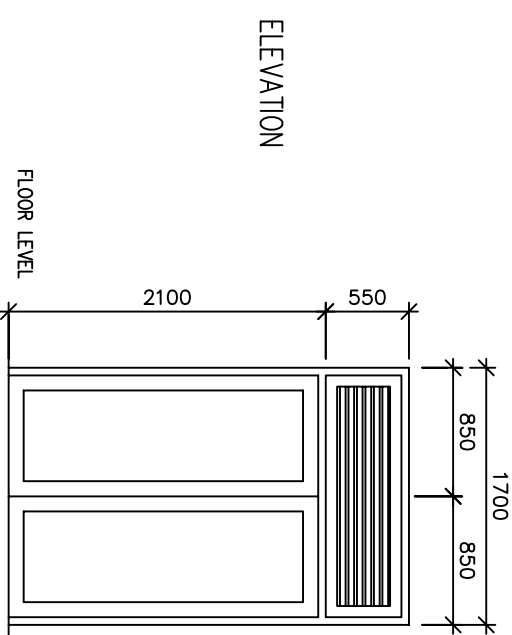
D2	TOTAL = 3 nos
—	m.sq.

D3	TOTAL = 2 nos
—	m.sq.

NOTE:
G: 6mm thk. clear glazing
L: aluminium louvers
Fb: 6mm thk. fixed glazing

GENERAL NOTES

- Dimension shown on drawings indicates effective openings of frame. All aluminium frame depths are 75mm. Wooden door panel thickness = 35mm.
- External units must comply the following weather conditions:
 - Wind pressure: 200kg/sqm. -Water tightness: 25kg/sqm.
- All external frames/ wall joints must be sealed with silicon sealant and wedges trimmed with 12x12 mm F.V.V. beading fitted to frames by brass nails.
- All hardware shall be provided for the performance of all functions of the units.
- (A) Hinges shall conform to Door size more than 700(W)x210(H)
 - WD: 125mmx2 setsSD: 150mmx3 sets
- (B) Door size less than 700(W)x210(H)
 - WD: 100mmx2 setsSD: 150mmx3 sets
- locks shall be cylindrical winmaster keysets. Door locks shall be 900mm above finished floor level.
- Door where indicated are 3 hours fire rated doors
- Door swings are indicated on the floor plans
- All elevations shown from outside and window sillsings DEFINED on the schedule.
- All measurements to be checked on site



LOCATION	G.F
QUANTITY	8
DOOR FRAME	aluminium
FINISHES	Powder coated tinted glass

G.F	3
aluminium	Powder coated
REMARKS	Timber Louvered

G.F	1
aluminium	Powder coated
REMARKS	—

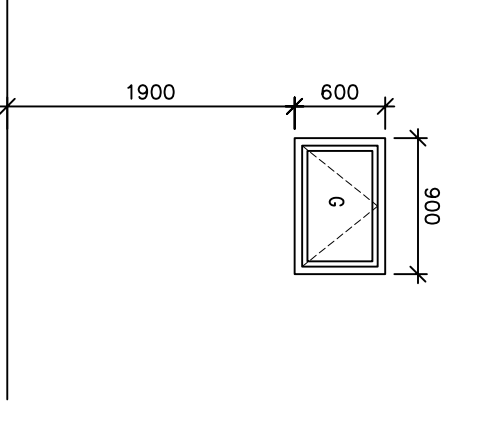
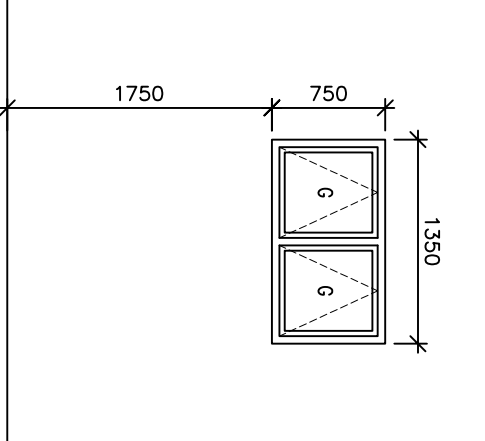
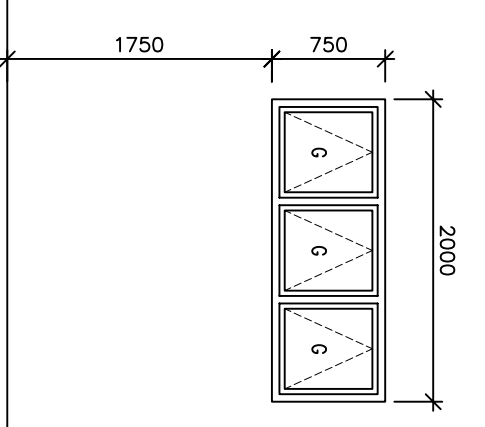
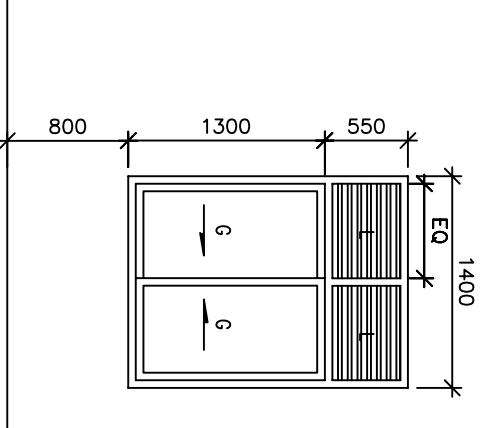
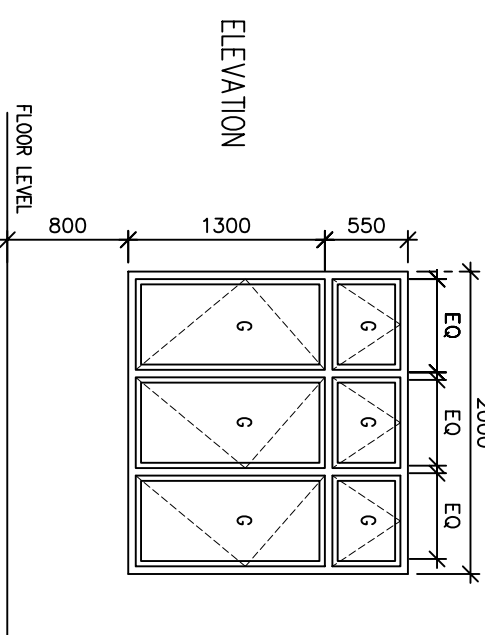
SYMBOL	W1	TOTAL = 16 nos
OPENABLE AREA	3.7	m.sq.

W2	TOTAL = 7 nos
2.59	m.sq.

W3	TOTAL = 22 nos
1.5	m.sq.

W4	TOTAL = 4 nos
0.81	m.sq.

V1	TOTAL = 5 nos
0.54	m.sq.



LOCATION	G.F
QUANTITY	16
DOOR FRAME	Aluminium
FINISHES	Powder coated

G.F	7
Aluminium	Powder coated
REMARKS	Timber Louvered

G.F	22
Aluminium	Powder coated
REMARKS	tinted black

G.F	4
Aluminium	Powder coated
REMARKS	—

G.F	5
Aluminium	Powder coated
REMARKS	—