

PROJECT: TH.DHIYAMIGILI MOSQUE (304 FAX)
MINISTRY OF ISLAMIC AFFAIRS

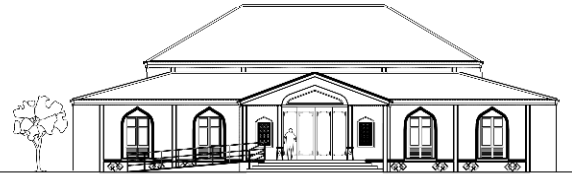


TABLE OF CONTENTS

DRAWING No.	TITLE	REVISION No.	DATE	REMARKS
ARCHITECTURAL				
A-01/32	TABLE OF CONTENTS	—	—	—
A-02/32	SITE PLAN	—	—	—
A-03/32	GROUND FLOOR PLAN	—	—	—
A-04/32	T.B LEVEL 3 PLAN	—	—	—
A-05/32	ROOF PLAN	—	—	—
A-06/32	REFLECTED CEILING PLAN 1	—	—	—
A-07/32	REFLECTED CEILING PLAN 2	—	—	—
A-08/32	SECTION Y-Y & ELEVATION E1	—	—	—
A-09/32	SECTION X-X & ELEVATION E2	—	—	—
A-10/32	DOORS & WINDOWS SCHEDULE 01	—	—	—
A-11/32	DOORS & WINDOWS SCHEDULE 02	—	—	—
A-12/32	SLIDING DOOR DETAIL & WINDOW W2 DETAIL	—	—	—
A-13/32	PARTITION DETAILS	—	—	—
A-14/32	DETAIL -01	—	—	—
A-15/32	DETAIL -01	—	—	—
A-16/32	DETAIL -01	—	—	—
A-17/32	DETAIL -02	—	—	—
A-18/32	DETAIL -03 & 04	—	—	—
A-19/32	DETAIL -05 & 06	—	—	—
A-20/32	COLUMN DETAILS	—	—	—
A-21/32	STRUCTURAL ISOMETRIC VIEW	—	—	—
A-22/32	TRUSS DETAIL	—	—	—
A-23/32	CEILING DETAIL	—	—	—
A-24/32	DETAIL 02	—	—	—
A-25/32	DETAIL 08	—	—	—
A-26/32	DETAIL 08	—	—	—
A-27/32	DETAIL 08	—	—	—
A-28/32	RAMP DETAIL	—	—	—
A-29/32	BOUNDARY WALL LAYOUT	—	—	—
A-30/32	BOUNDARY WALL FOUNDATION PLAN	—	—	—
A-31/32	BOUNDARY WALL DETAILS	—	—	—
A-32/32	WALL & FLOOR FINISHES LAYOUT	—	—	—
ABLUTION AREA				
A-01/05	ABLUTION FLOOR PLAN, REFLECTED CEILING PLAN & ROOF PLAN	—	—	—
A-02/05	ABLUTION ELEVATIONS & SECTIONS	—	—	—
A-03/05	ABLUTION STRUCTURAL DETAILS	—	—	—
A-04/05	DETAIL 07	—	—	—
A-04/05	ABLUTION AREA TILE LAYOUT PLAN	—	—	—
MINARET				
A-01/04	MINARET DETAILS 1	—	—	—
A-02/04	MINARET ELEVATION E1	—	—	—
A-03/04	MINARET SECTION	—	—	—
A-04/04	CAT LADDER DETAIL	—	—	—
A-04/04	MINARET DETAILS 02	—	—	—
STRUCTURAL DETAIL				
S-01/08	GENERAL NOTES	—	—	—
S-02/08	FOUNDATION PLAN	—	—	—
S-03/08	BEAM PLAN@LEVEL 1&2	—	—	—
S-04/08	BEAM PLAN@LEVEL 3	—	—	—
S-05/08	BEAM PLAN@LEVEL 4	—	—	—
S-06/08	ROOF FRAMING PLAN@LEVEL 1	—	—	—
S-07/08	ROOF FRAMING PLAN@LEVEL 2	—	—	—
S-08/08	STRUCTURAL DETAILS	—	—	—
SERVICES				
E-01/04	MOSQUE LIGHTING LAYOUT	—	—	—
P-02 & E-02/04	ABLUTION PLUMBING & LIGHTING LAYOUT	—	—	—
P-01/04	SITE PLUMBING PLAN	—	—	—
P-03/04	PLUMBING DETAILS	—	—	—

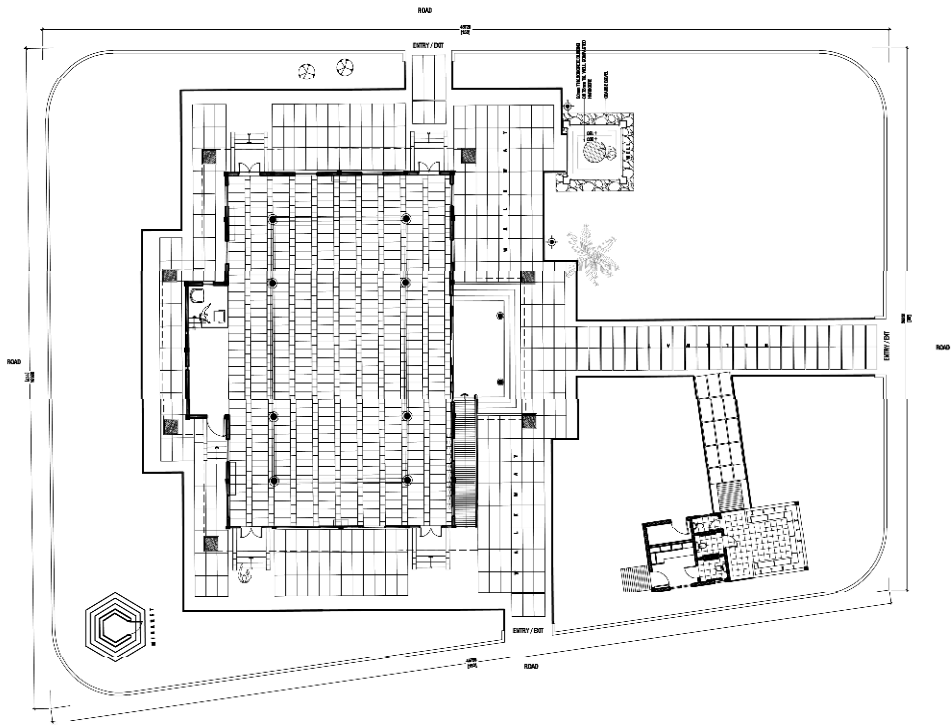
PROJECT:
TH.DHIYAMIGILI
MOSQUE (304 PAX)



INFRASTRUCTURE
DEVELOPMENT SECTION

MINISTRY OF ISLAMIC
AFFAIRS

MOSQUE
(ARCHITECTURAL & STRUCTURAL)



SITE PLAN

SCALE 1:200



LEGEND:

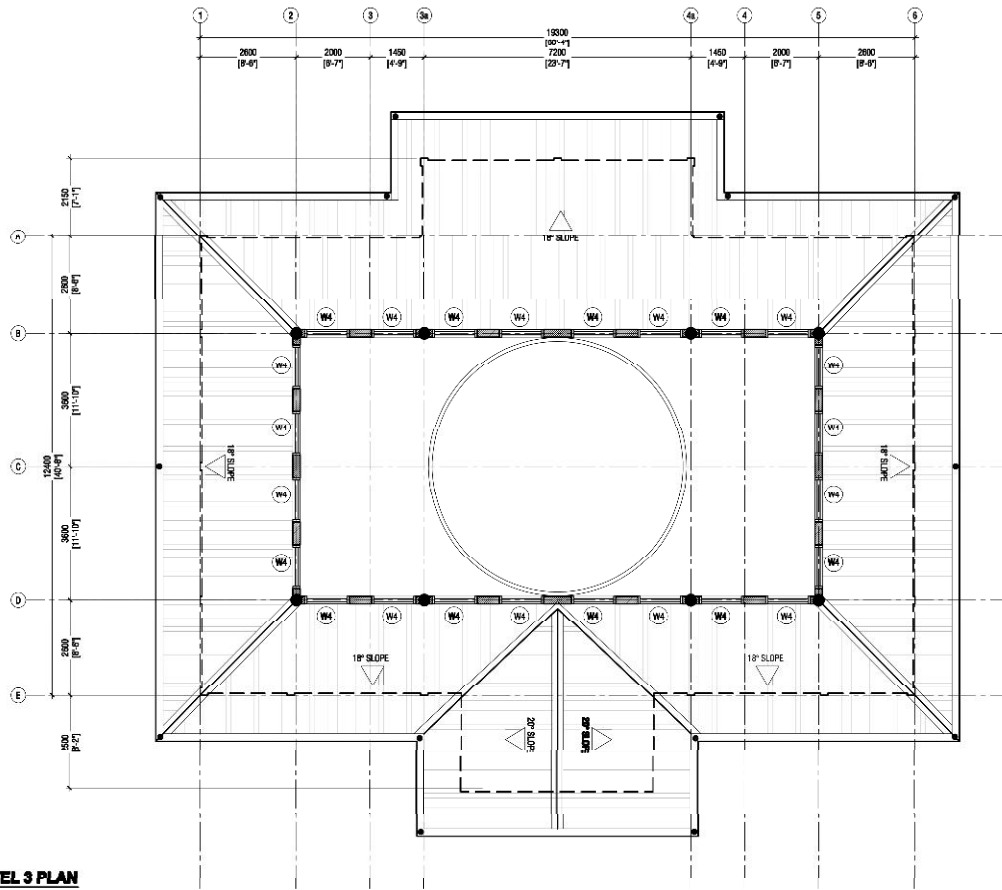
- EXISTING CURB AND SIDEWALK
- ROADWAY
- PROPOSED DRIVEWAY

PROJECT:
TH. DHIYAMIGILI
MOSQUE (304 PAX)



INFRASTRUCTURE
DEVELOPMENT SECTION

MINISTRY OF ISLAMIC
AFFAIRS



BEAM LEVEL 3 PLAN

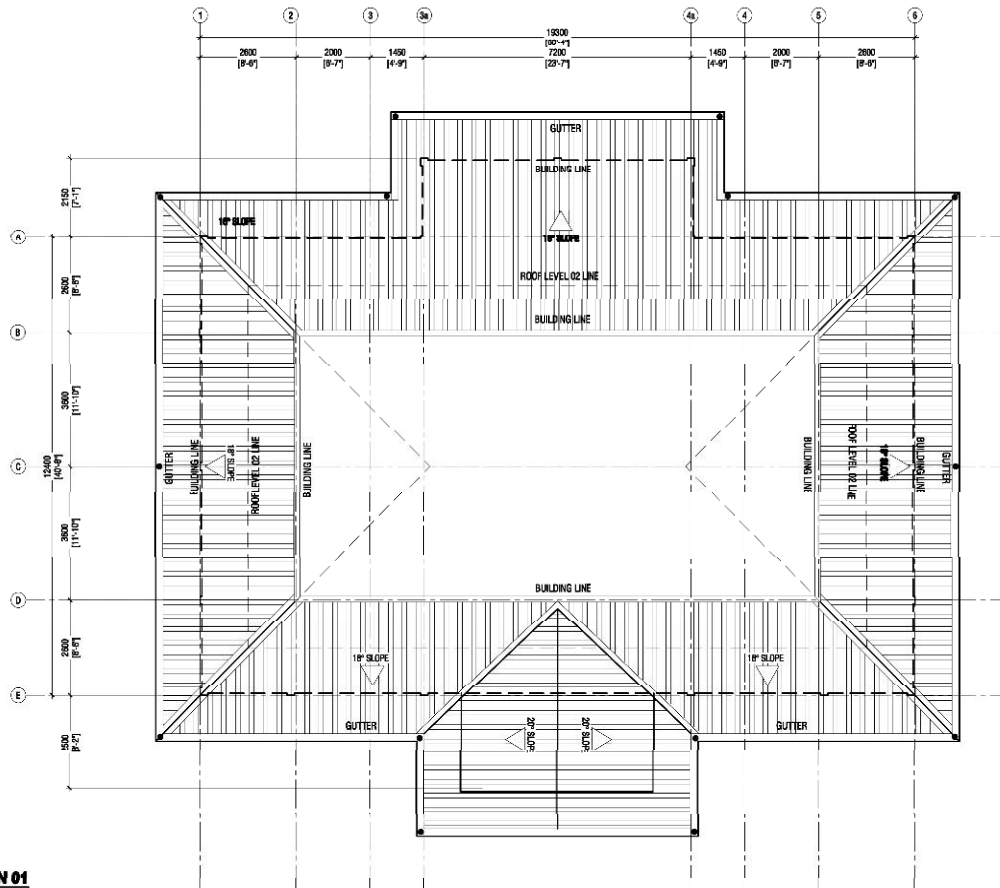
SCALE 1:100
0 0.5 1 2 3 4 5

PROJECT
TH.DHIYANIGILI
MOSQUE (304 PAX)



INFRASTRUCTURE
DEVELOPMENT SECTION

MINISTRY OF ISLAMIC
AFFAIRS



ROOF PLAN 01

SCALE 1:100



PROJECT:
TH.DHIYANIGILI
MOSQUE (304 PAX)

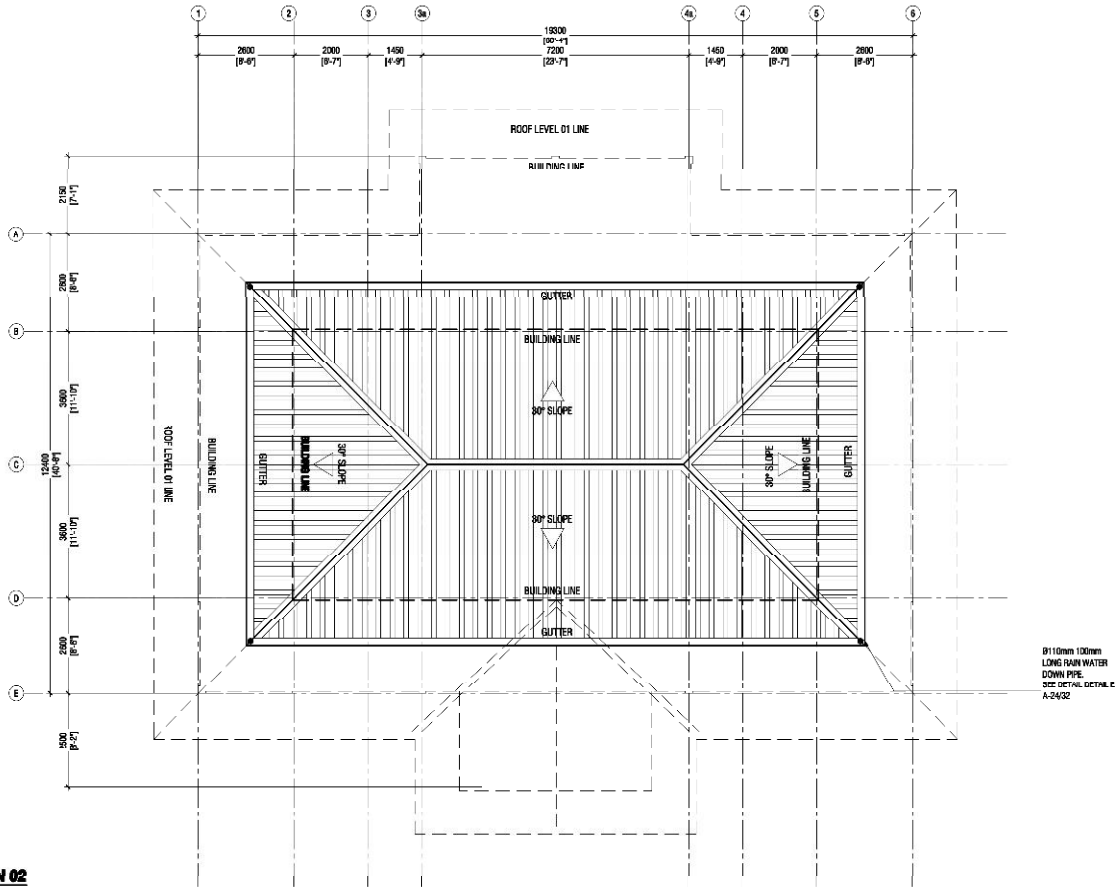
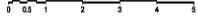


INFRASTRUCTURE
DEVELOPMENT SECTION

MINISTRY OF ISLAMIC
AFFAIRS

ROOF PLAN 02

SCALE 1:100

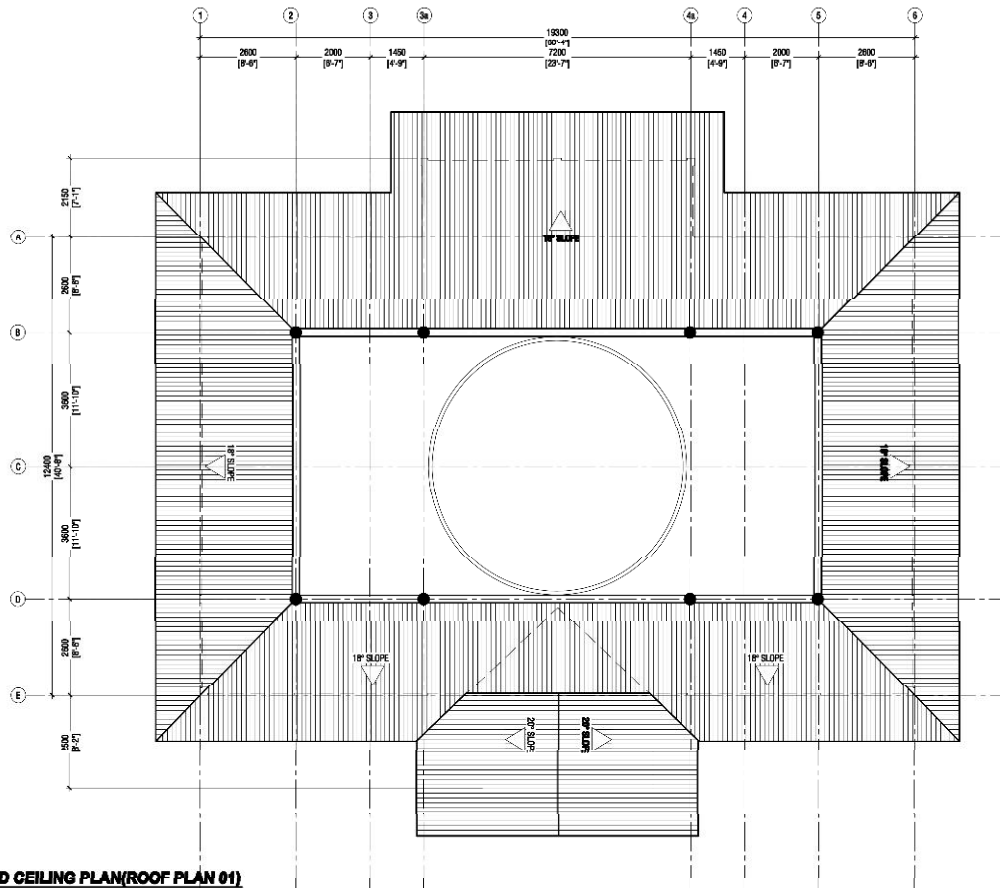


PROJECT:
TH.DHIYAMIGILI
MOSQUE (304 PAX)



INFRASTRUCTURE
DEVELOPMENT SECTION

MINISTRY OF ISLAMIC
AFFAIRS



REFLECTED CEILING PLAN(ROOF PLAN 01)

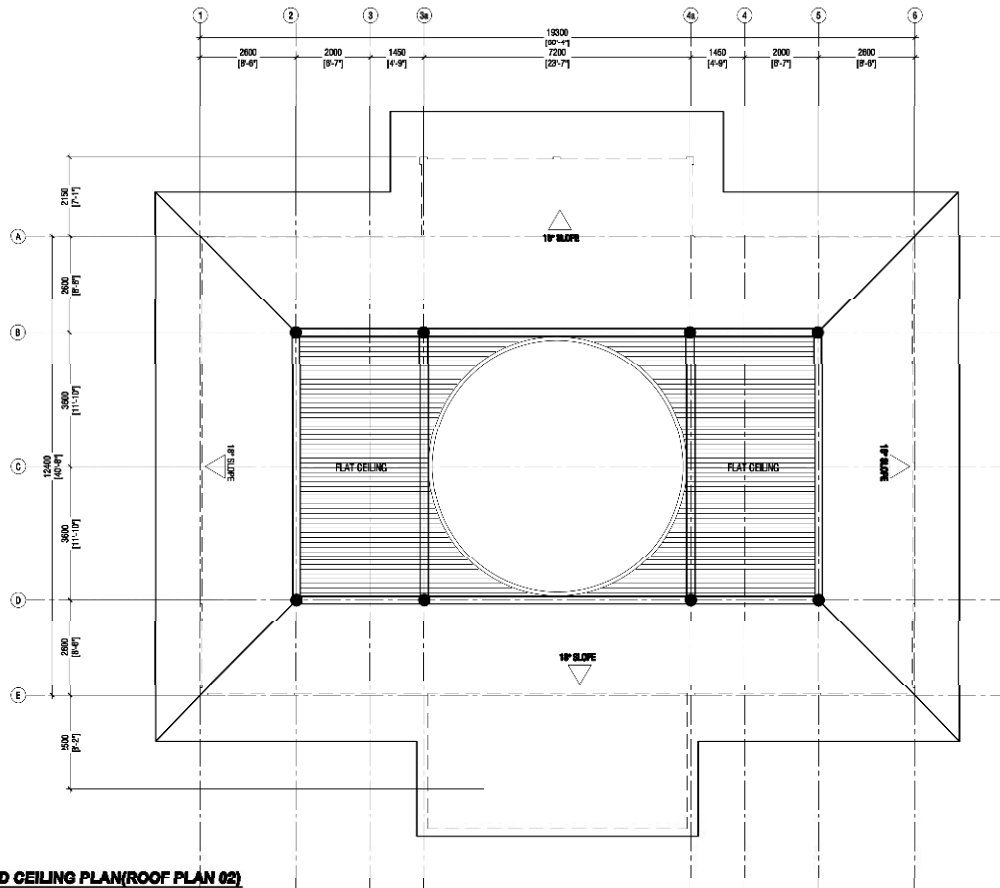
SCALE 1:100
0 0.5 1 2 3 4 5

PROJECT
TH.DHIYANIGILI
MOSQUE (304 PAX)



INFRASTRUCTURE
DEVELOPMENT SECTION

MINISTRY OF ISLAMIC
AFFAIRS

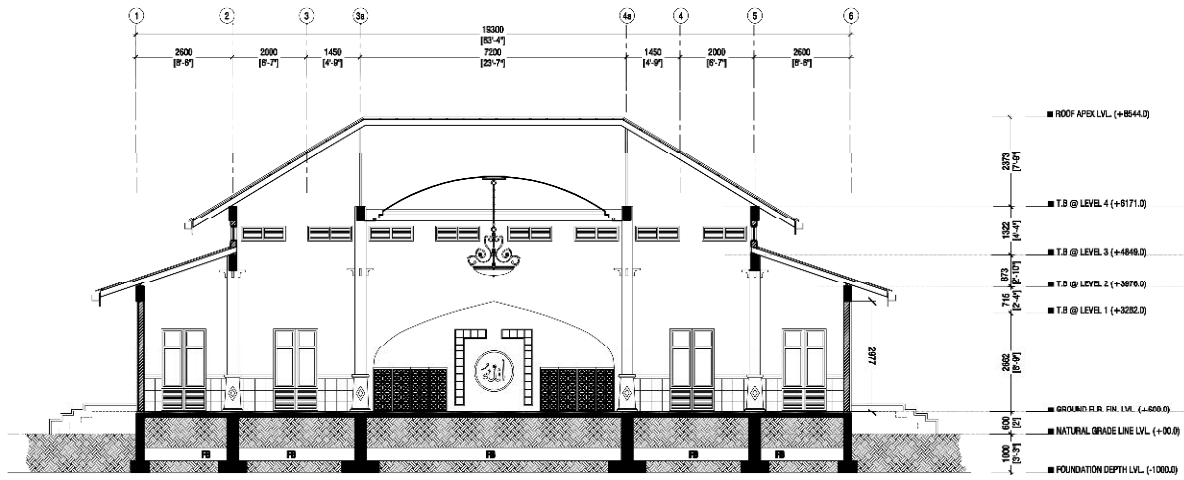


PROJECT:
TH. DHIYAMIGILI
MOSQUE (304 PAX)



INFRASTRUCTURE
DEVELOPMENT SECTION

MINISTRY OF ISLAMIC
AFFAIRS



SECTION Y-Y

SCALE 1:100

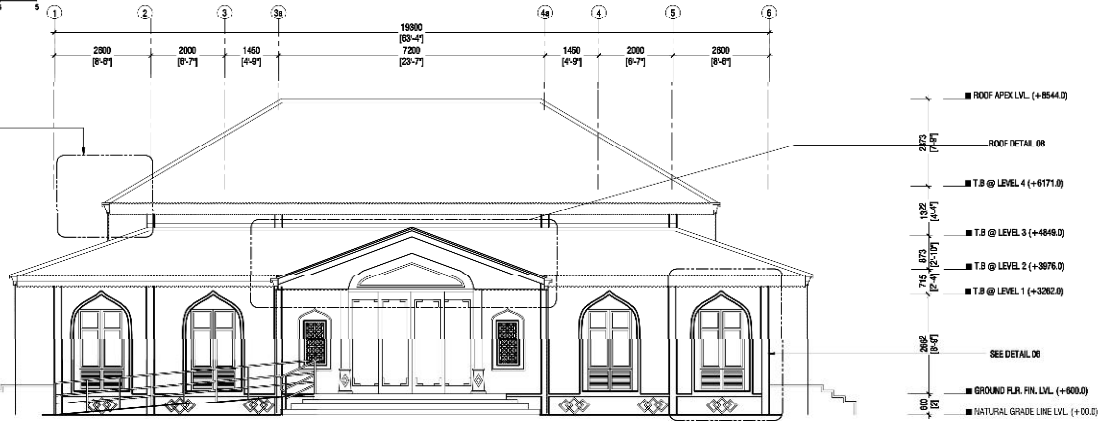


SEE DETAIL 05



ELEVATION E1

SCALE 1:100

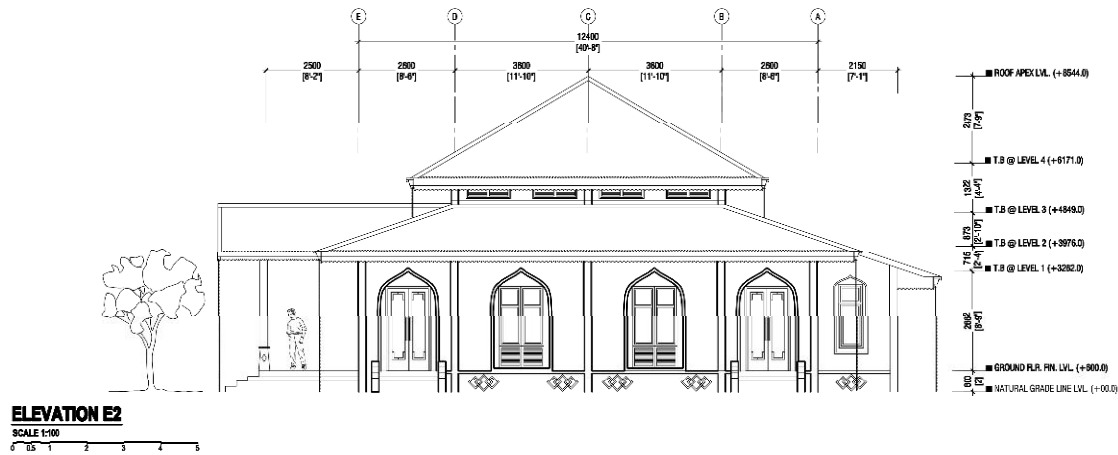
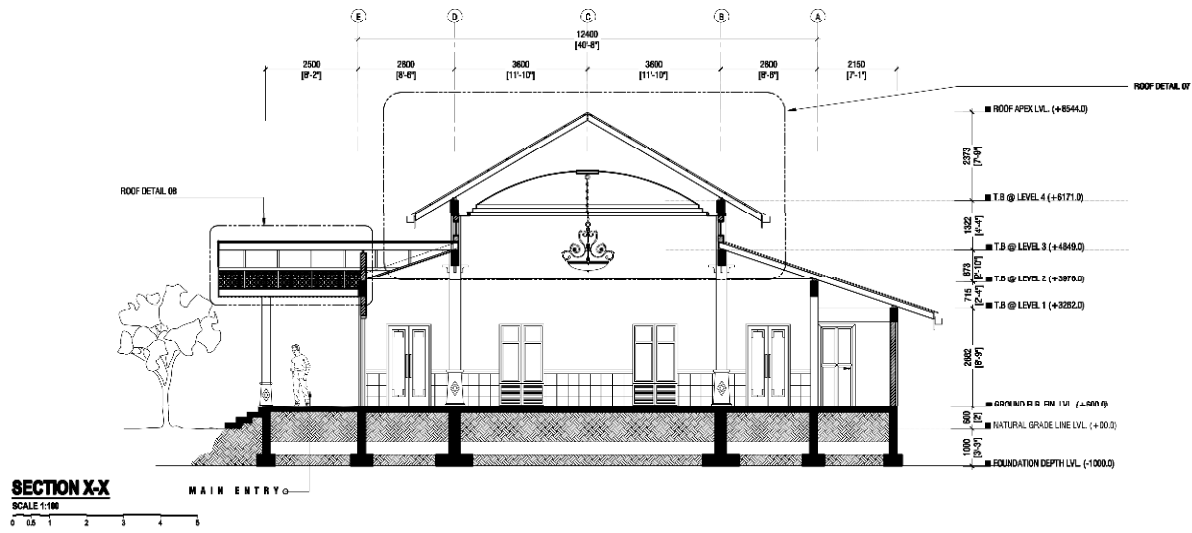


PROJECT:
TH.DHIYANIGILI
MOSQUE (304 PAX)



INFRASTRUCTURE
DEVELOPMENT SECTION

MINISTRY OF ISLAMIC
AFFAIRS

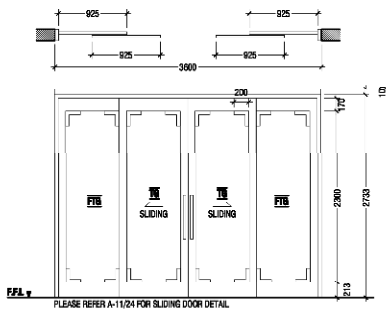


PROJECT:
TH.DHIYANIGILI
MOSQUE (304 PAX)

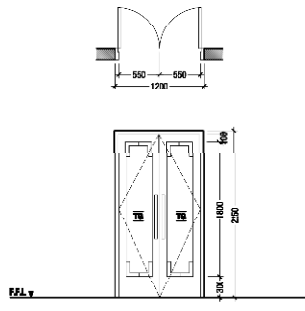


INFRASTRUCTURE
DEVELOPMENT SECTION

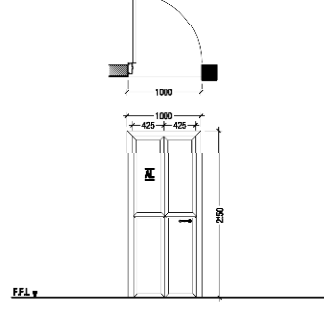
MINISTRY OF ISLAMIC
AFFAIRS



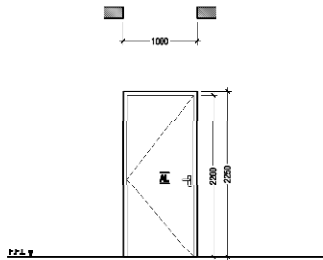
(D1)	SLIDING DOOR WITH ORNAMENT
REMARKS	KAPUR TIMBER-FRAMED 8MM THK. TINTED GLASS DOOR PANEL WITH -8mm THICK 200X200mm L' SHAPED KAPUR TIMBER ORNAMENTS
HARDWARE	LOCKSET : MORTISE LOCK, SS FINISH
LOCATION	MAIN ENTRANCE
QUANTITY	1 NO
OPEN AREA	4.00 SQM.



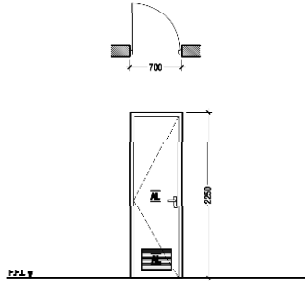
(D1)	TWO-LEAF SWING-TYPE DOOR
REMARKS	WHITE POWDER COATED ALUMINUM-FRAMED 8mm THK. TINTED GLASS DOOR PANEL WITH -8mm THICK 200X200mm L' SHAPED KAPUR TIMBER ORNAMENTS
LOCATION	SIDE ENTRANCE
QUANTITY	4 NOS
OPEN AREA	2.67 SQM.



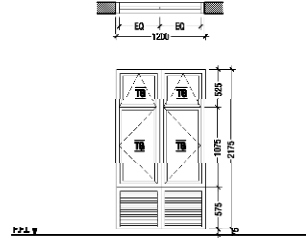
(D2)	SWING-TYPE DOOR WITH TRANSOM & VIEWING GLASS
REMARKS	WHITE POWDER COATED ALUMINUM-FRAMED 8mm THK. TINTED GLASS DOOR PANEL, W/ SECURITY LOCK, DOOR GUARD, & DOOR HANDLE
HARDWARE	LOCKSET : MORTISE LOCK W/ DOOR HANDLE, SS FINISH HINGE : 4"x3"x3mm THK. BUTT HINGE, SS FINISH (4 PCS) DOOR GUARD: 4" LONG, SS FINISH
LOCATION	IMAM ENTRY
QUANTITY	1 NO
OPEN AREA	1.57 SQM.



(D3)	SWING-TYPE DOOR WITH TRANSOM
REMARKS	WHITE POWDER COATED ALUMINUM-FRAMED 8mm THK. TINTED GLASS DOOR PANEL, W/ SECURITY LOCK, DOOR GUARD, & DOOR HANDLE
HARDWARE	LOCKSET : MORTISE LOCK W/ DOOR HANDLE, SS FINISH HINGE : 4"x3"x3mm THK. BUTT HINGE, SS FINISH (4 PCS) DOOR GUARD: 4" LONG, SS FINISH
LOCATION	ABLUTION FEMALE/STORE
QUANTITY	1 NOS
OPEN AREA	2.18 SQM.



(D4)	SWING-TYPE LOUVER DOOR
REMARKS	85mm THK. FLUSH TYPE PVC DOOR PANEL WITH 300X400 LOUVER
FINISH	WOOD STAIN (POLYURETHANE)
HARDWARE	LOCKSET : MORTISE LOCK W/ DOOR HANDLE, SS FINISH HINGE : 4"x3"x3mm THK. BUTT HINGE, SS FINISH (4 PCS) DOOR GUARD: 4" LONG, SS FINISH
LOCATION	ABLUTION TOILET
QUANTITY	3 NO
OPEN AREA	1.26 SQM.



(W1)	ALUMINUM CASEMENT & AWNING W/ ALUMINUM LOUVERS
REMARKS	WHITE POWDER COATED ALUMINUM -FRAMED 8MM THK. TINTED GLASS WINDOW PANEL
LOCATION	PRAYER AREA
QUANTITY	12 NOS
OPEN AREA	2.45

DOORS & WINDOWS SCHEDULE 01

SCALE 1:50

0 0.25 0.5 1 1.5 2 2.5

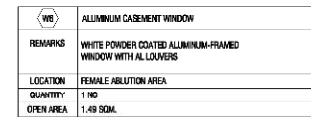
NOTE:-
-ALL DOORS & WINDOWS TO BE CHECKED ON SITE BEFORE FABRICATION
-ALL DOOR & WINDOWS VERIFIED FROM EXTERIOR, FOR DOOR SWING, REFER TO FLOOR PLANS.
-THE DOORS / WINDOWS WHICH DOES NOT MATCH THE SCHEDULE PLANS FOR ALUMINUM, REFER (U) ABOVE THE DOOR / WINDOW.

LEGEND:-
BT - BOLD TIMBER
AL - ALUMINUM LOUVERS
PB - TINTED GLASS
PTB - FIXED TINTED GLASS
TB - TINTED GLASS
OPB - OPAQUE GLASS
TB - TINTED GLASS
PTB - FIXED TINTED GLASS

PROJECT:
TH.DHIYANIGILJ
MOSQUE (304 PAX)

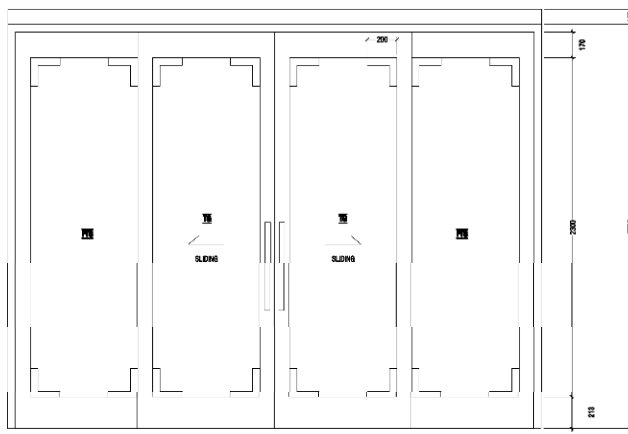


MINISTRY OF ISLAMIC
AFFAIRS



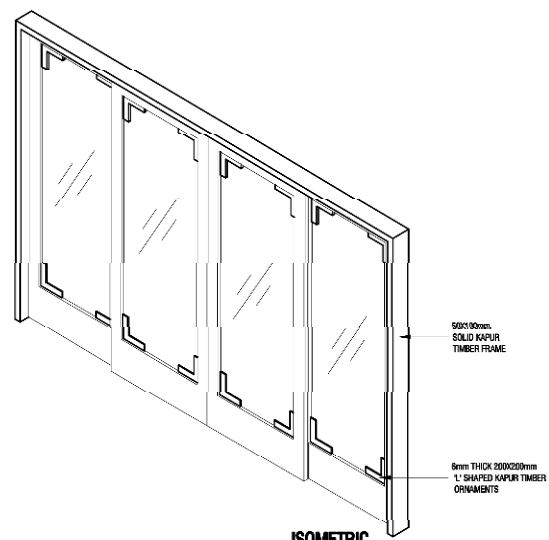
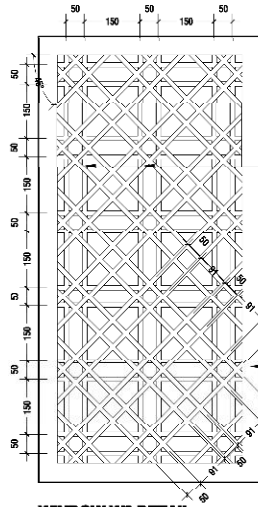
SCALE 1:50

LEGEND:-
ST - SOLID TIMBER
AL - ALUMINUM LOUVERS
FG - FRITTED GLASS
FTG - FROST TINTED GLASS
TG - TINTED GLASS
OPG - OPAQUE GLASS
TR - TIMBER IN AISR
FTG - FROST TINTED GLASS



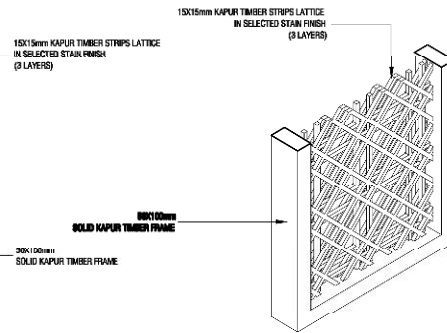
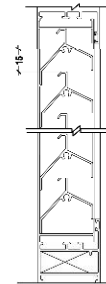
SLIDING DOOR WITH ORNAMENT

SCALE 1:10

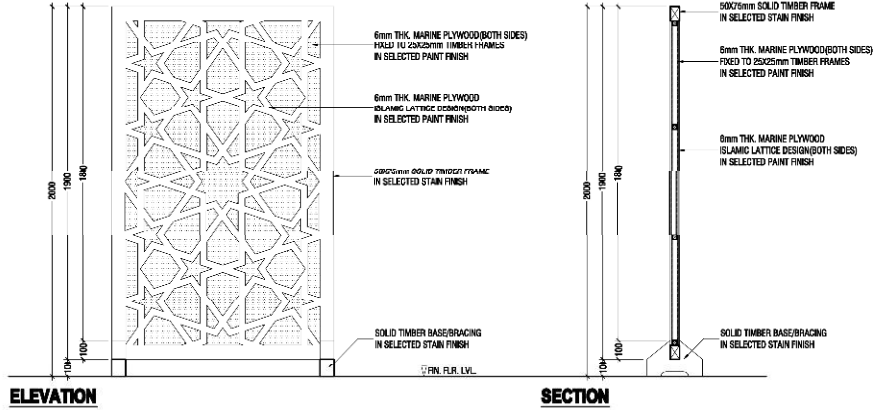
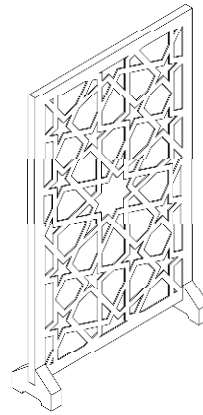
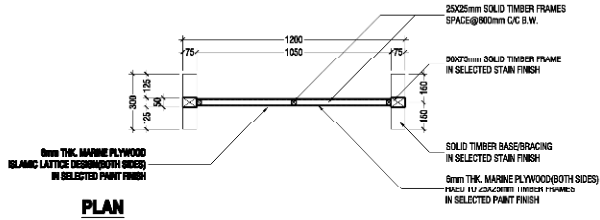
ISOMETRIC

WINDOW W2 DETAIL

SCALE 1:10

**ISOMETRIC**

TYPICAL LOUVER SPACING DETAIL



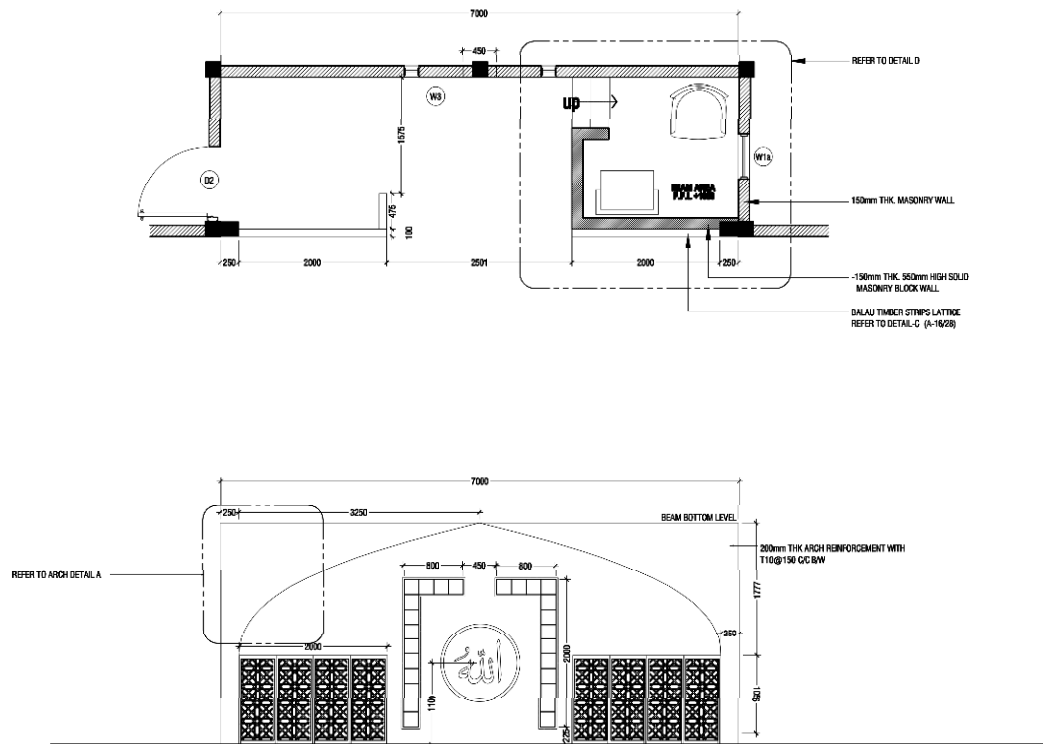
MOVABLE PRIVACY PARTITION DETAIL
SCALE 1:50

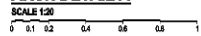
PROJECT:
TH.DHIYANIGILJ
MOSQUE (304 PAX)

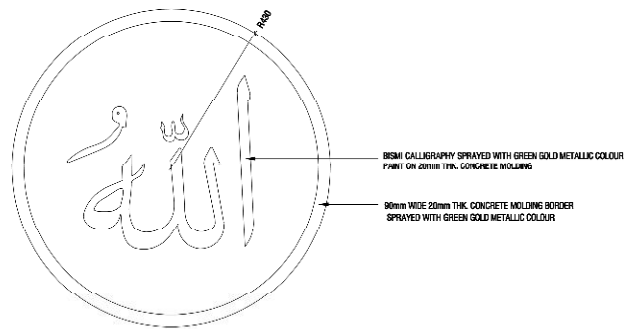
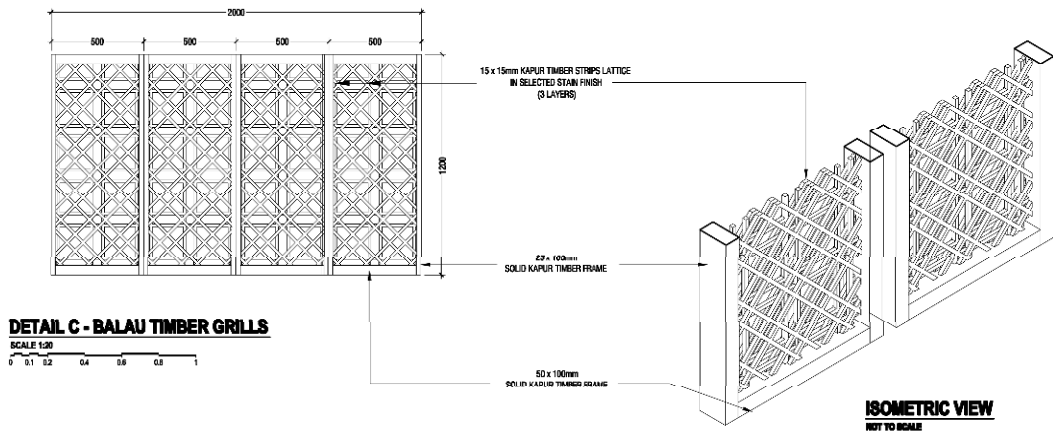


INFRASTRUCTURE
DEVELOPMENT SECTION

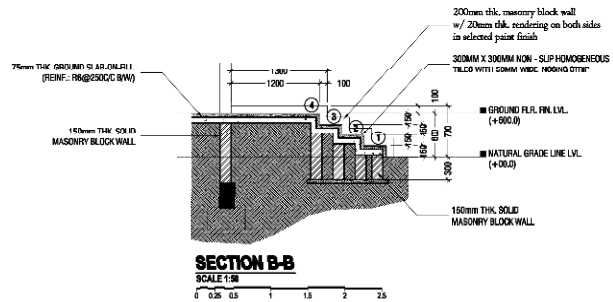
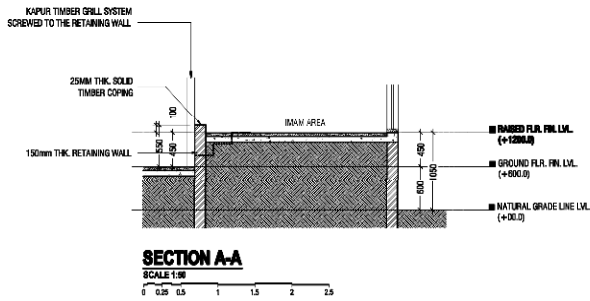
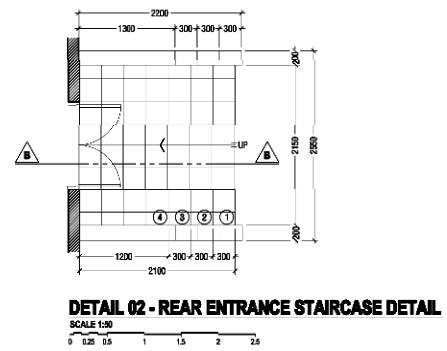
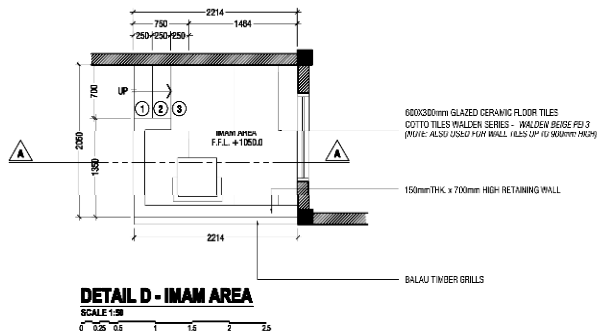
MINISTRY OF ISLAMIC
AFFAIRS



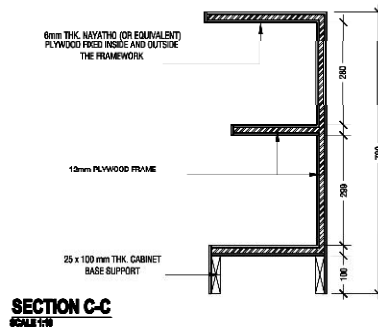
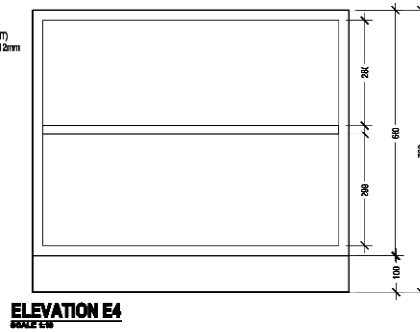
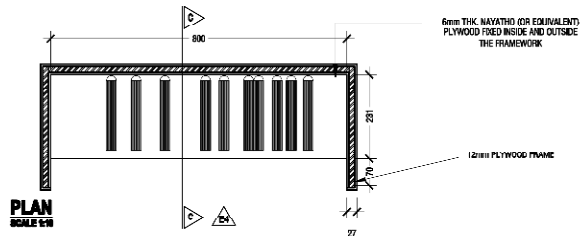
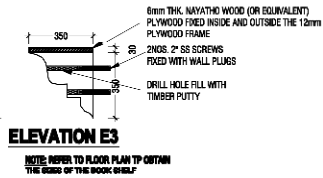
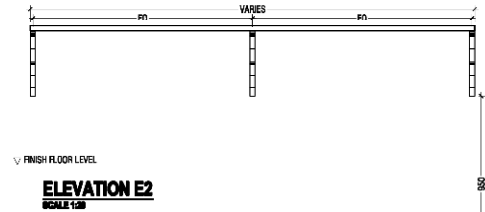
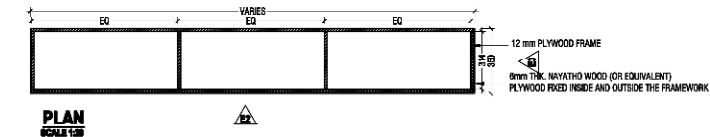


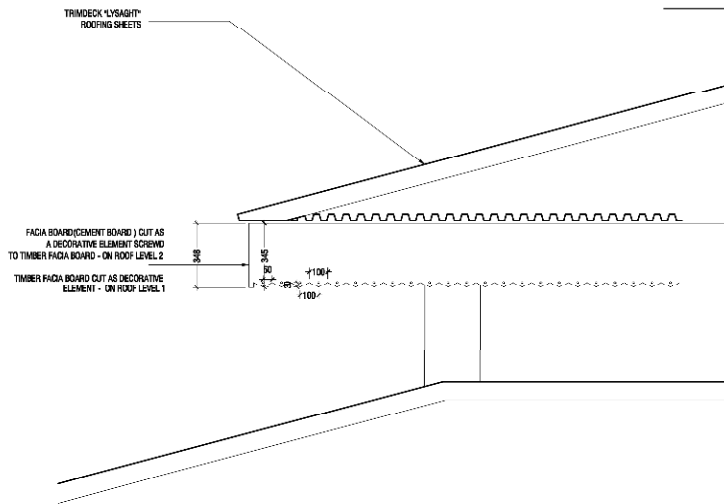


CALLIGRAPHY DETAIL
SCALE 1:20
0 0.1 0.2 0.4 0.6 0.8 1



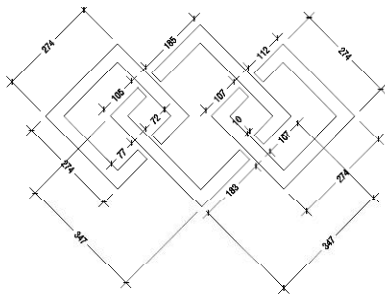
PROJECT:
TH.DHIYANIGILJ
MOSQUE (304 PAX)





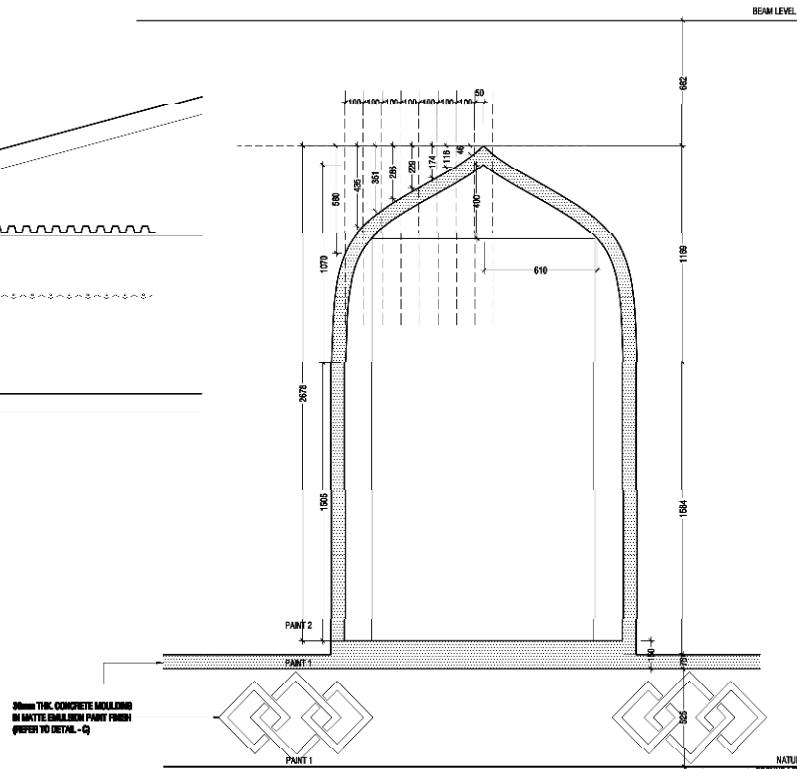
DETAIL - 05 (NALAFILA DETAIL (FACIA BOARD))

SCALE 1:20



DETAIL - C

SCALE 1:10



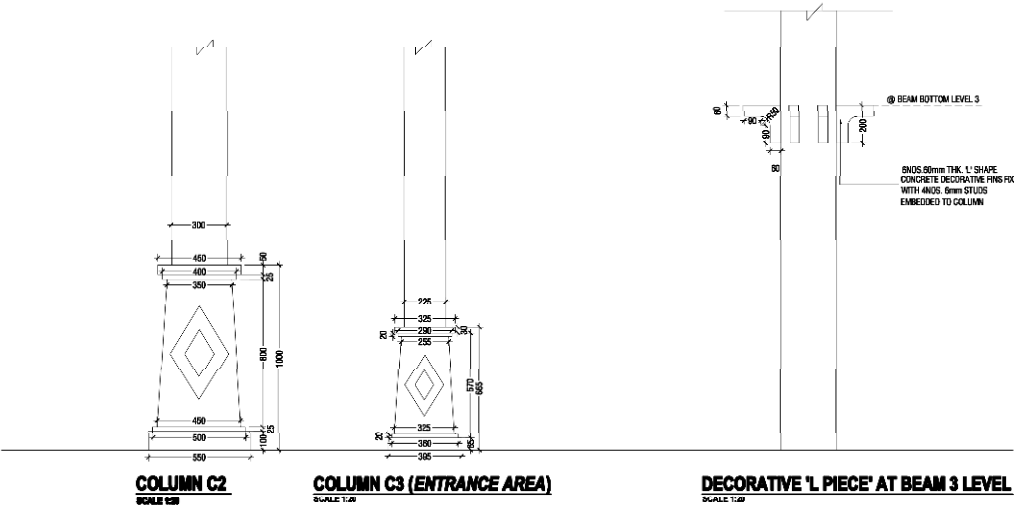
DETAIL 06 - (CONCRETE MOLDING DETAIL)

SCALE 1:20



**INFRASTRUCTURE
DEVELOPMENT SECTION**

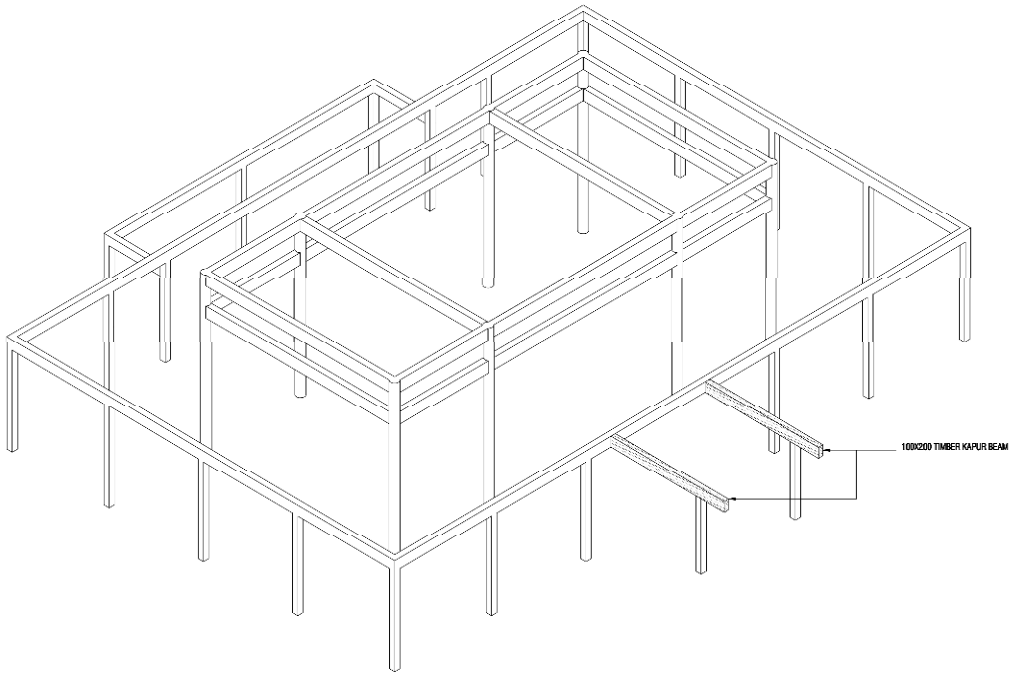
MINISTRY OF ISLAMIC
AFFAIRS



PROJECT:
TH.DHIYANIGILJ
MOSQUE (304 PAX)



MINISTRY OF ISLAMIC
AFFAIRS



STRUCTURE ISOMETRIC LAYOUT

SCALE 1:100

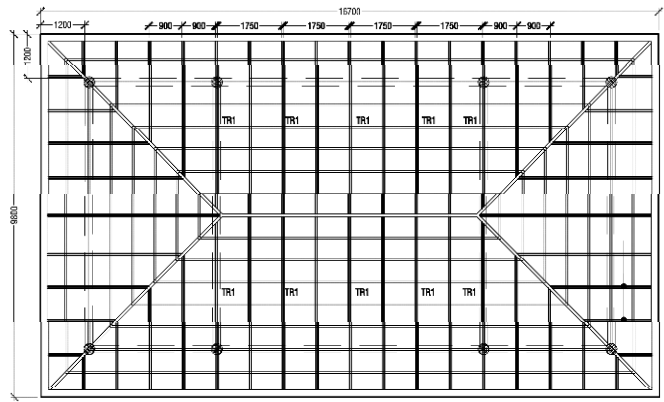


PROJECT:
TH.DHIYAMIGILI
MOSQUE (304 PAX)

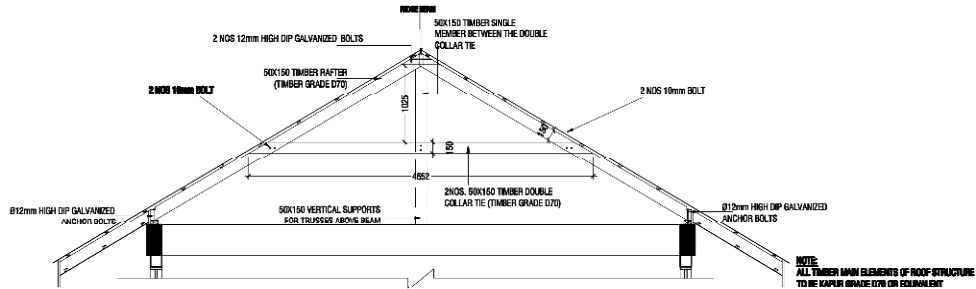


INFRASTRUCTURE
DEVELOPMENT SECTION

MINISTRY OF ISLAMIC
AFFAIRS



ROOF BEAM PLAN
SCALE 1:50



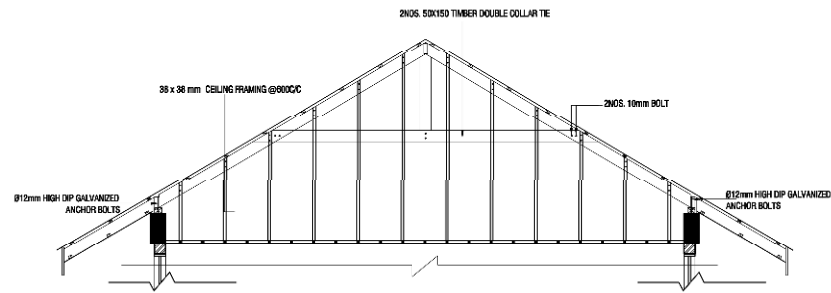
TRUSS TR1
SECTION F-F
0 0.2 0.4 0.6 0.8 1

TRUSS DETAIL
SCALE 1:50
0 0.5 1 1.5 2 2.5

PROJECT:
TH.DHIYANIGILJ
MOSQUE (304 PAX)



MINISTRY OF ISLAMIC
AFFAIRS



CEILING DETAIL

SCALE 1:50

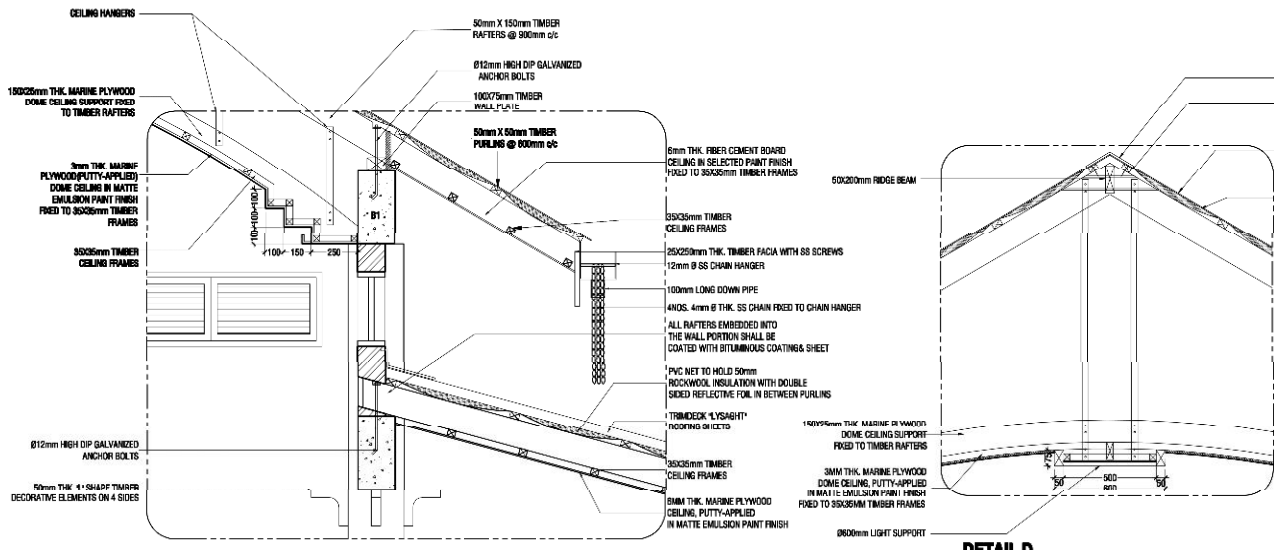
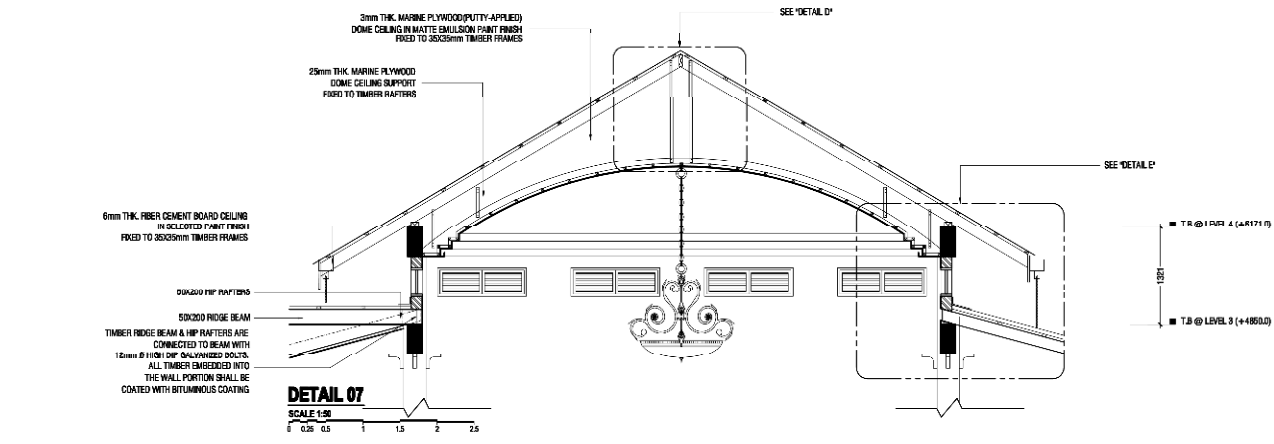


PROJECT:
TH.DHIYANIGILJ
MOSQUE (304 PAX)



INFRASTRUCTURE
DEVELOPMENT SECTION

MINISTRY OF ISLAMIC
AFFAIRS

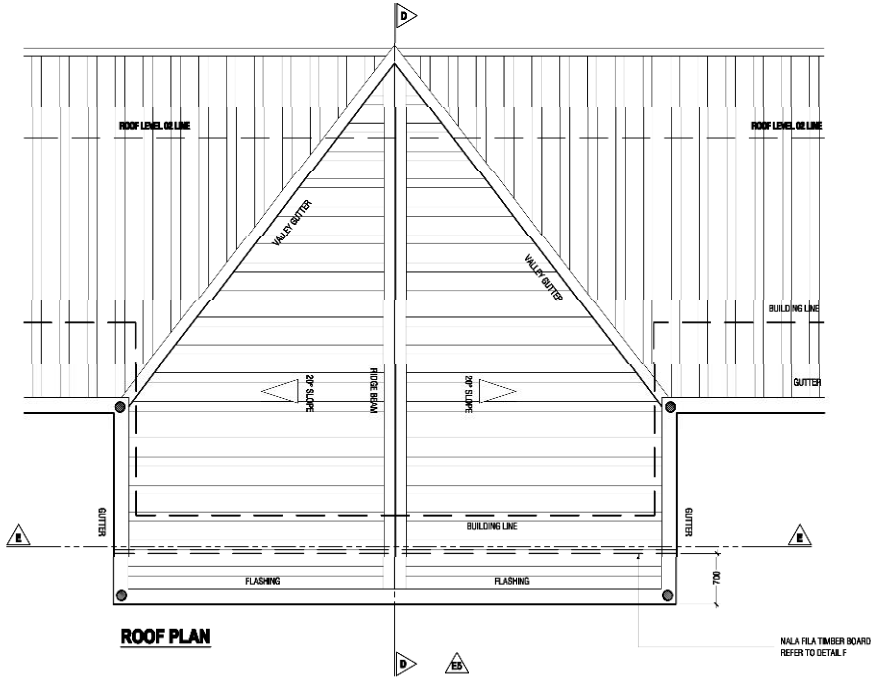


DETAIL E (ALL RAFTERS & TR1 BEAM CONNECTION DETAIL)
SCALE 1:50

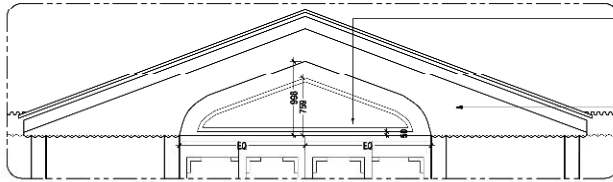
PROJECT:
TH.DHIYANIGILJ
MOSQUE (304 PAX)



INFRASTRUCTURE
DEVELOPMENT SECTION
MINISTRY OF ISLAMIC
AFFAIRS



ROOF PLAN



ELEVATION E6

DETAIL 08

SCALE 1:50

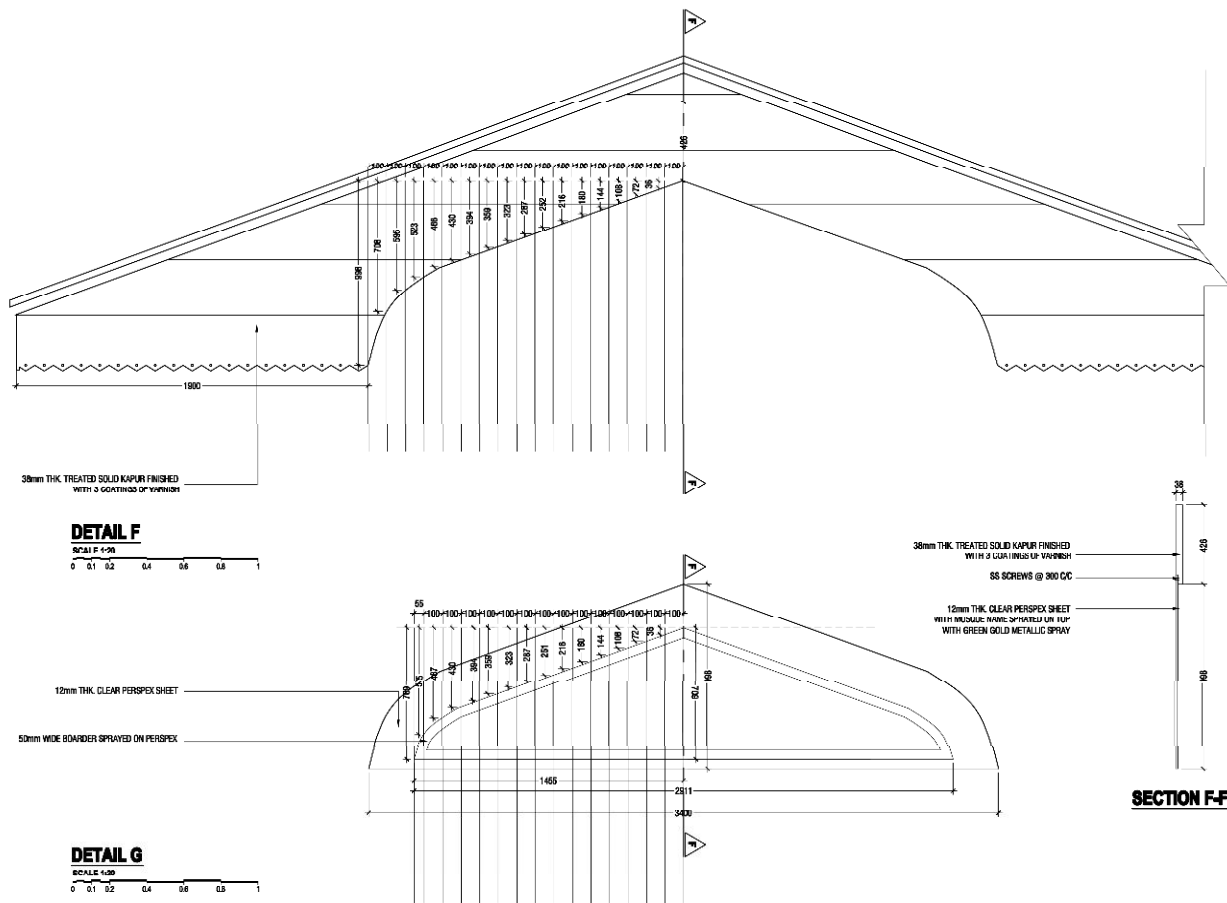


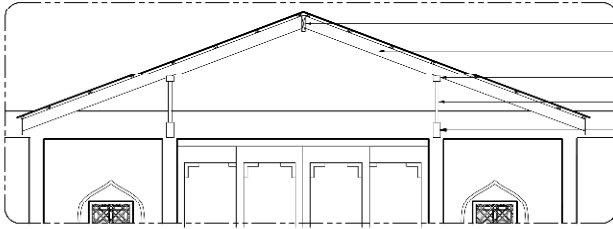
PROJECT:
TH. DHYANIGILI
MOSQUE (304 PAX)



INFRASTRUCTURE
DEVELOPMENT SECTION

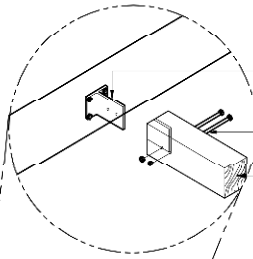
MINISTRY OF ISLAMIC
AFFAIRS





SECTION E-E
SCALE 1:20

- 50x200 RIDGE BEAM
- 100x75mm TIMBER 50x150 TIMBER RAFTER @ 600 C/C
- 100x75mm TIMBER WALL PLATE
- 15 x 15mm KAPUR TIMBER STRIPS LATTICE IN SELECTED STAIN FINISH (2 LAYERS)
- 100x200 TIMBER KAPUR BEAM



- 12mm THICK 150mm LONG SS PLATE WELDED TO 12mm THK. 150x150mm SS BASE PLATE. BOLTED TO BEAM WITH 4 NOS. M12 ANCHOR BOLTS

- 6 NOS SS12 SS BOLTS WITH WASHERS AND NUTS

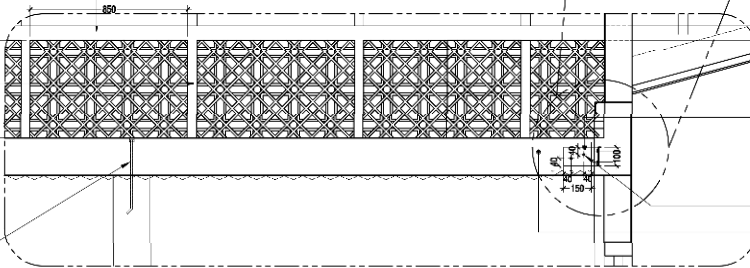
- 100x200mm TREATED KAPUR BEAM

- 100x75mm TIMBER WALL PLATE

- 100x50mm TIMBER SUPPORTS

- TIMBER BEAM BOLTED TO COLUMN WITH 12mm Ø SS BOLT

SECTION D-D
SCALE 1:10



- 12mm THICK SS PLATE BOLTED TO 12mm THK. 150x150mm SS BASE PLATE. BOLTED TO BEAM WITH 4 NOS. M12 ANCHOR BOLTS

- 2 NOS SS12 (316) BOLTS WITH WASHER NUTS

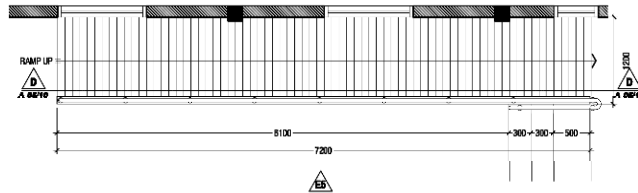
- 100x200 TIMBER KAPUR BEAM

PROJECT:
TH.DHIYAMIGILI
MOSQUE (304 PAX)

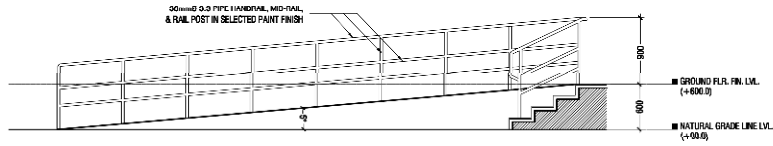


INFRASTRUCTURE
DEVELOPMENT SECTION

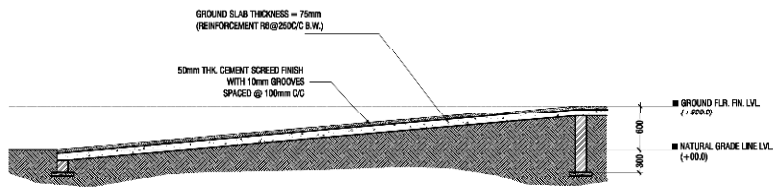
MINISTRY OF ISLAMIC
AFFAIRS



RAMP PLAN
SCALE 1:50

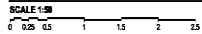


ELEVATION E5
SCALE 1:50



SECTION C-C
SCALE 1:50

DETAIL 10 - RAMP DETAIL

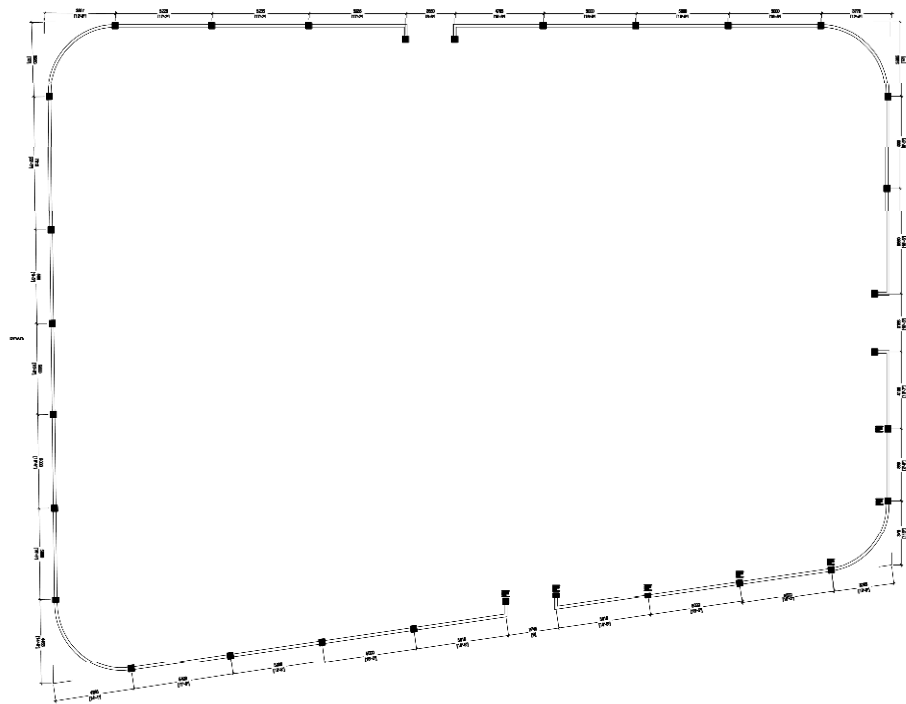


PROJECT:
TH.DHIYAMIGILI
MOSQUE (304 PAX)



INFRASTRUCTURE
DEVELOPMENT SECTION

MINISTRY OF ISLAMIC
AFFAIRS



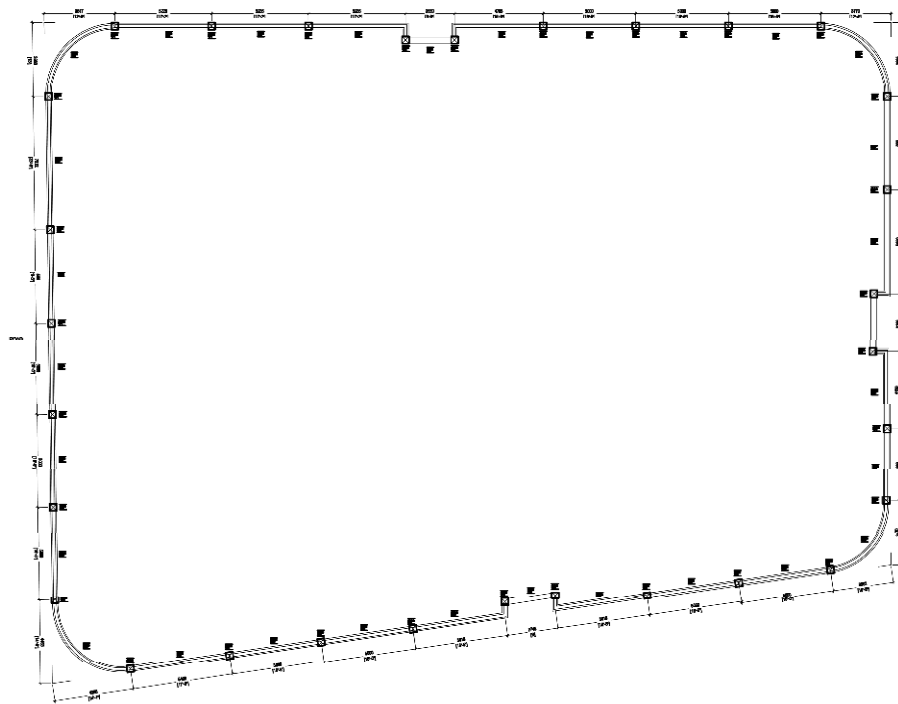
BOUNDARY WALL LAYOUT

PROJECT:
TH.DHIYAMIGILI
MOSQUE (304 PAX)



INFRASTRUCTURE
DEVELOPMENT SECTION

MINISTRY OF ISLAMIC
AFFAIRS



BOUNDARY WALL FOUNDATION PLAN

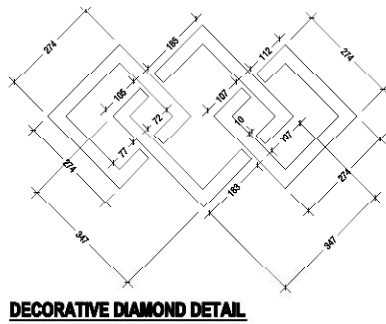
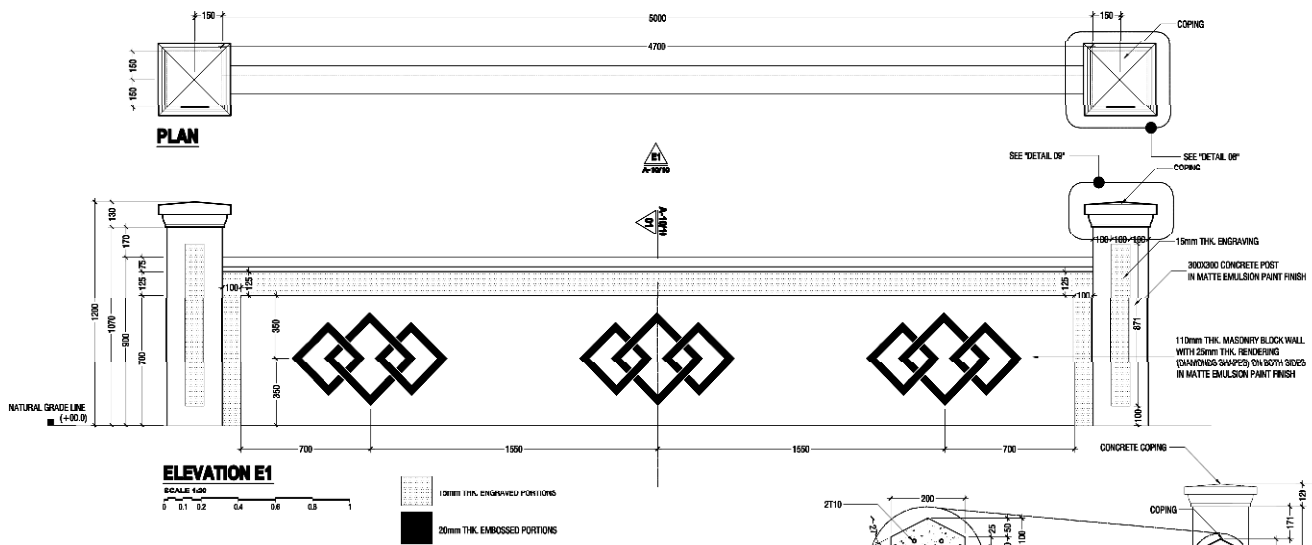
NOTE: ALL DIMENSIONS GIVEN IN
ALL DIMENSIONS GIVEN IN METERS

PROJECT:
TH.DHIYANIGILI
MOSQUE (304 PAX)

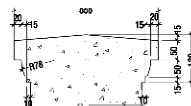
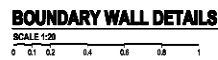


INFRASTRUCTURE
DEVELOPMENT SECTION

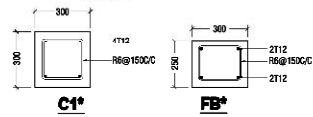
MINISTRY OF ISLAMIC
AFFAIRS



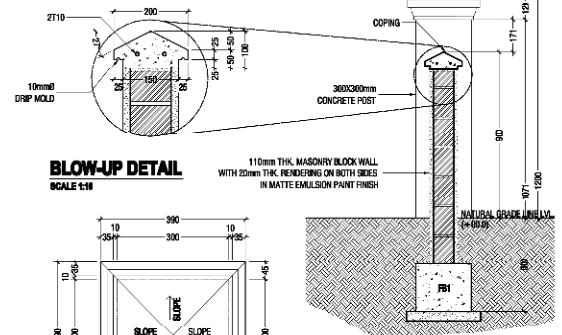
DECORATIVE DIAMOND DETAIL



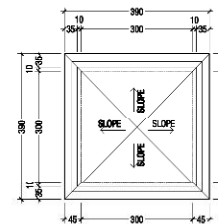
DETAILS 09
SCALE 1:10



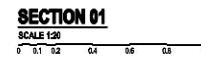
FOUNDATION DEPTH -500.0 MM
all new FB



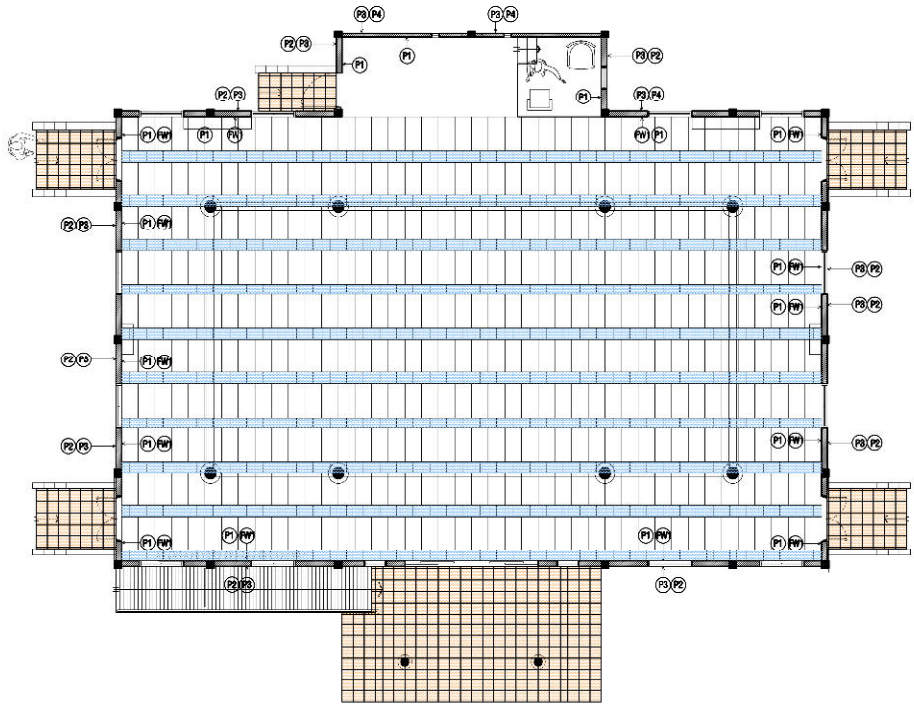
BLOW-UP DETAIL
SCALE 1:10



DETAILS 08
SCALE 1:10



SECTION 01



- LEGEND:**
- 800x800mm TEXTURED HOMOGENEOUS FLOOR TILES (ANTI-SLIP SURFACE) (WITH MOSAIC STRIPS FOR STAIR STEPS)
 - 600x300mm GLAZED CERAMIC FLOOR TILES SANDAL COLOUR
 - 600x300mm GLAZED CERAMIC FLOOR TILES BEIGE COLOUR (NOTE: ALSO USED FOR WALL TILES UP TO 900mm ABOVE)
 - P1 PAINT FINISH (LIGHT BEIGE)
 - P2 EXTERIOR PAINT FINISH (LIGHT MOSS GREEN)
 - P3 EXTERIOR PAINT FINISH (MID MOSS GREEN)
 - FW FEATURED WALL 900 FROM THE ABOVE FLOOR FINISH WITH 600x300mm GLAZED CERAMIC WALL TILES BEIGE COLOUR W/ WOOD MOULDINGS ON TOP

WALL & FLOOR FINISHES LAYOUT
SCALE 1:100
0 0.5 1 2 3 4 5

PROJECT:
TH.DHIYAMIGILI
MOSQUE (304 PAX)



INFRASTRUCTURE
DEVELOPMENT SECTION
MINISTRY OF ISLAMIC
AFFAIRS

GENERAL NOTES

A. IN THE INTERPRETATION OF THESE DRAWINGS, INDICATED DIMENSIONS SHALL GOVERN AND DIMENSIONS ON SACS SHALL NOT BE SCALED FOR CONSTRUCTION PURPOSES.

B. THE CONTRACTOR SHALL COORDINATE WITH THE AR, SE, EE AND OTHER UTILITY AND EQUIPMENT PLANS FOR THE EXACT SIZE, NUMBER AND LOCATIONS OF ALL SLEEVES OR OPENINGS THRU FLOOR SLABS, BEAMS AND WALLS.

C. ALL REINFORCED CONCRETE WORK SHALL BE DONE IN ACCORDANCE WITH THE STRUCTURAL CODE AND THE AD 318-95 BUILDING CODE.

D. ALL STRUCTURAL STEEL WORK SHALL BE DONE IN ACCORDANCE WITH THE STRUCTURAL CODE AND AISI ASD 1989 IN SO FAR AS THEY DO NOT CONFLICT WITH THE LOCAL BUILDING CODE REQUIREMENTS.

E. ALL SLABS, BEAMS AND OTHER STRUCTURAL ELEMENTS WHICH ARE NOT INDICATED, DETAILED, DESIGNATED OR INADEQUATELY OMITTED BUT ARE NECESSARY TO BE COORDINATED WITH ARCHITECTURAL AND OTHER ALLIED ENGINEERING PLANS AS WELL AS TO COMPLETE THE STRUCTURAL WORKS IN ACCORDANCE WITH THE INTENT OF THE PLANS AND SPECIFICATIONS SHALL BE BROUGHT UP DURING PRE-CONSTRUCTION/COORDINATIONS. IT IS UNDERSTOOD THAT THE CONTRACTOR HAS PROVIDED AND INCLUDED ALL THESE ITEMS IN HIS BID.

F. SLAB ON FILL MUST NOT BE PLACED UNLESS FILL HAS BEEN PROPERLY COMPACTED. UNLESS DETAILED OTHERWISE, ALL SLABS ON FILL SHALL BE PROVIDED WITH DAMP-PROOF MEMBRANE. BACK FILLING OF ALL EXCAVATED AREAS AND PREPARATION OF LEAN CONCRETE SHALL BE WELL COMPACTED TO AT LEAST 95% OF THE MODIFIED PROCTOR DENSITY BEFORE LAYING 75mm LEAN CONCRETE.

NOTES ON CONCRETE MIXES AND PLACING

A. UNLESS OTHERWISE INDICATED IN PLANS OR NOTED IN THE SPECIFICATIONS THE MINIMUM 28-DAY CYLINDER COMPRESSIVE STRENGTH OF CONCRETE, f_c , SHALL BE AS FOLLOWS:

1) COLUMNS, BEAMS, GIRDERS AND SUSPENDED SLABS, CONC. WALLS 25MPa
FOOTINGS AND SLAB-ON-GRADE.

2) LEAN CONCRETE 10MPa

B. 1.) CONCRETE SHALL BE DEPOSITED IN ITS FINAL POSITION WITHOUT SEGREGATION. REHANDLING OR FLOWING PLACING SHALL BE DONE PREFERABLY WITH BUEGIES, BUCKETS OR WHEEL BARROWS. NO CHUTES WILL BE ALLOWED EXCEPT TO TRANSFER CONCRETE FROM HOPPERS TO BUEGIES, WHEEL BARROWS OR BUCKETS, IN WHICH CASE, THEY SHALL NOT EXCEED SIX (6) METERS IN AVERAGE LENGTH.

2.) NO DEPOSITING OF CONCRETE SHALL BE ALLOWED WITHOUT THE USE OF VIBRATORS UNLESS AUTHORIZED IN WRITING BY THE DESIGNER AND ONLY FOR UNUSUAL CONDITIONS WHERE VIBRATION IS EXTREMELY DIFFICULT TO ACCOMPLISH.

C. EACH BATCH OF CONCRETE MIX TIME SHOULD NOT BE LESS THAN 3 MINS.

D. POURING HEIGHT OF CONCRETE SHALL NOT BE MORE THAN 1.6M.

E. CONCRETE SHALL BE CURED FOR NOT LESS 7 DAYS.

F. FOR COLD JOINTS, Sika LATER OR EQUIVALENT BONDING AGENT SHOULD BE APPLIED 10 MINS. BEFORE POURING CONCRETE.

G. EXPOSED A EXTERNAL CONCRETE MEMBERS SHOULD BE CASTED WITH Sika PLASTOCRETE PLUS OR EQUIVALENT WATER PROOFING CHEMICAL.

NOTES ON FOUNDATION

A. FOOTINGS WERE DESIGNED WITH AN ASSUMED ALLOWABLE SOIL BEARING PRESSURE OF 150 KPa. CONTRACTOR SHALL REPORT IN WRITING TO THE STRUCTURAL ENGINEER ACTUAL SOIL CONDITION UNCOVERED AND CONFIRM ACTUAL BEARING CAPACITY OF SOIL BEFORE DEPOSITING CONCRETE.

B. NO FOOTING SHALL REST ON UNCOMPACTED FILL.

C. MINIMUM CONCRETE PROTECTION FOR REINFORCEMENT SHALL BE 50mm CLEAR FOR CONCRETE DEPOSITED AGAINST THE GROUND AND 50mm FOR CONCRETE DEPOSITED AGAINST FORMWORK.

D. PROVIDE TEMPORARY REMOVAL OF WATER FROM ANY SOURCE DURING CONSTRUCTION. DEWATERING SHALL BE CAREFULLY AND PROPERLY PERFORMED TO AVOID DISTURBING THE FOUNDATIONS AND SLAB BEARING SURFACES.

E. CONTRACTOR SHALL DESIGN, INSTALL AND MONITOR ALL EXCAVATION RETENTION SYSTEMS AS REQUIRED FOR PROTECTION OF ADJACENT PROPERTIES AND PROVIDE ALL MEASURES AND PRECAUTIONS NECESSARY TO MINIMIZE SETTLEMENT AND PREVENT DAMAGE TO ADJACENT EXISTING OR NEW CONSTRUCTION.

F. IN CASES WHERE REQUIRED FOOTING LEVELS SHOW A HONEYCOMBED STRUCTURE CONTAINING LOOSE MATERIALS, REMOVE LOOSE MATERIALS AND FILL ALL VOIDS WITH A CONCRETE REPAIR MIXTURE.

G. REFER TO ARCHITECTURAL, PLUMBING AND OTHER TRADES FOR SUB-SOIL DRAINAGE SYSTEM, MACHINERY, ANCHORS AND OTHER EMBEDDED ITEMS, DEPRESSIONS, FINISHES, DOWELS FOR MASONRY WALLS, CURBS, ETC.

NOTES ON CONCRETE SLABS

A. ALL SLAB REINFORCEMENTS SHALL HAVE A CLEAR DISTANCE OF 25-30mm FROM THE BOTTOM AND FROM THE TOP OF SLABS. (see figure 1).

B. IF SLABS ARE REINFORCED BOTH-WAYS, BARS ALONG THE SHORTER SPAN SHALL BE PLACED BELOW THOSE ALONG THE LONG SPAN AT THE CENTER AND OVER THE LONGER SPAN BARS NEAR THE SUPPORTS.

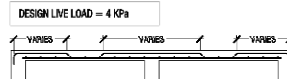


FIGURE 1 (STANDARD SLAB DESIGN)

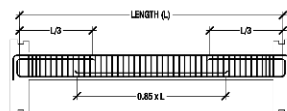
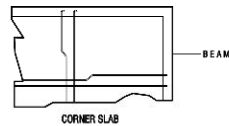


FIGURE 2 (STANDARD BEAM DESIGN)



NOTES ON REINFORCING STEEL BARS

A. ALL REINFORCING STEEL BARS SHALL BE NEW BILLET, HOT ROLLED, DEFORMED BARS CONFORMING TO THE SPECIFICATIONS OF EN 10080-2:1995 (S235JR) OR EN 10080-2:1995 (S235JR) OR EN 10080-2:1995 (S235JR).

B. ALL CONCRETE REINFORCEMENT SHALL BE DETAILED, FABRICATED, LABELED, SUPPORTED AND SPACED IN FORMS, SECURED IN THE REQUIRED LOCATION IN ACCORDANCE WITH THE PROCEDURES AND REQUIREMENTS OUTLINED IN THE LATEST EDITION OF THE BUILDING CODE AND THE MANUAL OF STANDARD PRACTICE FOR DETAILING REINFORCED CONCRETE STRUCTURES, AD-315.

C. ALL REINFORCING BARS SHALL BE CLEANED THOROUGHLY OF ALL LOOSE RUST, SOIL OR OTHER MATERIAL IMMEDIATELY PRIOR TO PLACING CONCRETE.

D. REINFORCING BARS SHALL NOT BE WELDED WITHOUT THE STRUCTURAL ENGINEER'S WRITTEN PERMISSION. WELDING OF STIRRUPS, TIES, INSERTS OR OTHER SIMILAR ELEMENTS TO LONGITUDINAL REINFORCEMENT SHALL NOT BE ALLOWED.

E. CLEAR CONCRETE COVER FOR REINFORCING BARS SHALL BE AS FOLLOWS: (MINIMUM)

1.) CONCRETE CAST AGAINST EARTH - 50mm

2.) CONCRETE EXPOSED TO EARTH OR WEATHER 200 TO 300 BARS - 50mm

160 BARS AND SMALLER - 40mm

3.) CONCRETE NOT EXPOSED TO EARTH OR WEATHER SLABS, WALLS, JOINTS - 25 - 30mm

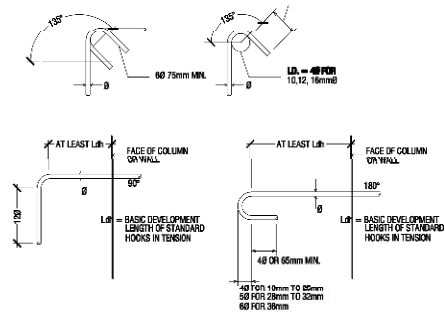
BEAMS - 30 - 35mm

COLUMNS - 35 - 40mm

TABLE A

F. SEE TABLE "A" FOR SCHEDULE OF LAP SPICES, GIRDERS.

BAR DIAMETER	LAP SPICES LENGTH (mm)
10	450
12	500
16	750
20	900
25	1300



DETAILS OF STANDARD HOOKS

FIGURE 1

STRUCTURAL NOTES

SCALE 1:100

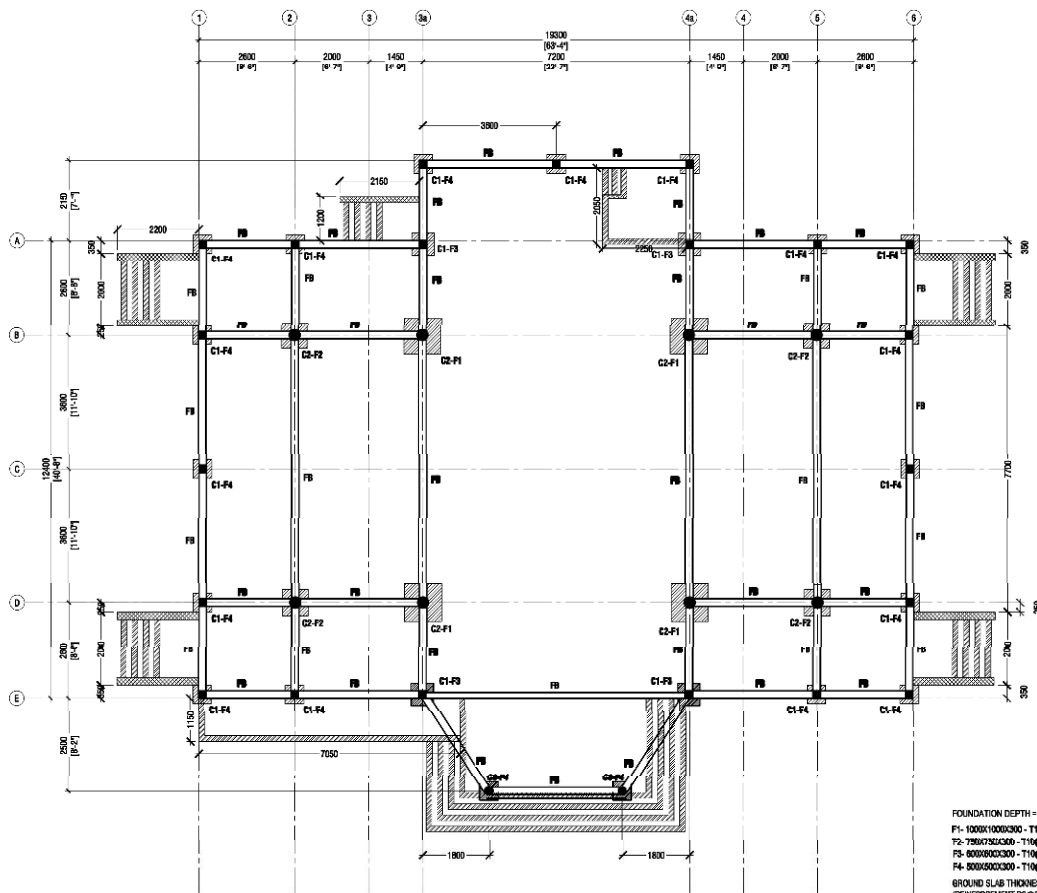
0 0.5 1 2 3 4 5

PROJECT:
TH.DHIYAMIGILI
MOSQUE (304 PAX)



INFRASTRUCTURE
DEVELOPMENT SECTION

MINISTRY OF ISLAMIC
AFFAIRS

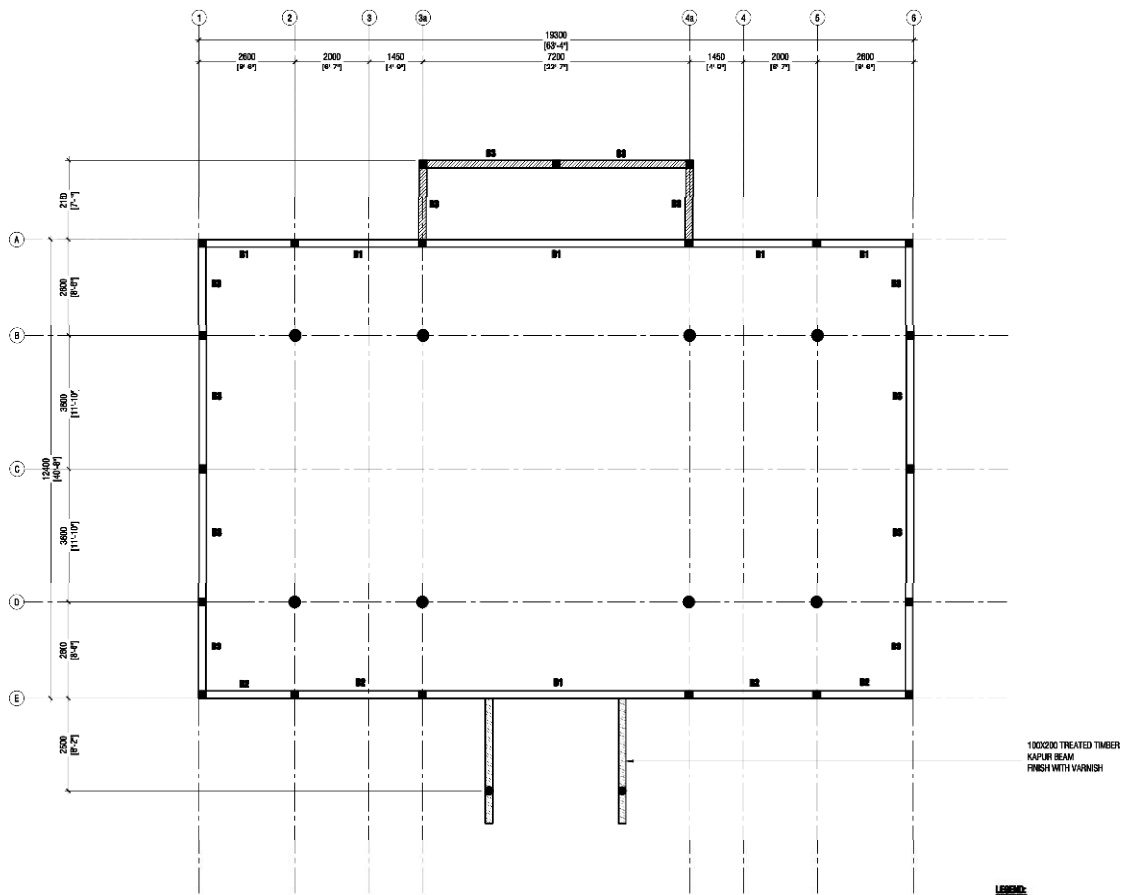


PROJECT
TH.DHIYANIGILI
MOSQUE (304 PAX)



INFRASTRUCTURE
DEVELOPMENT SECTION

MINISTRY OF ISLAMIC
AFFAIRS



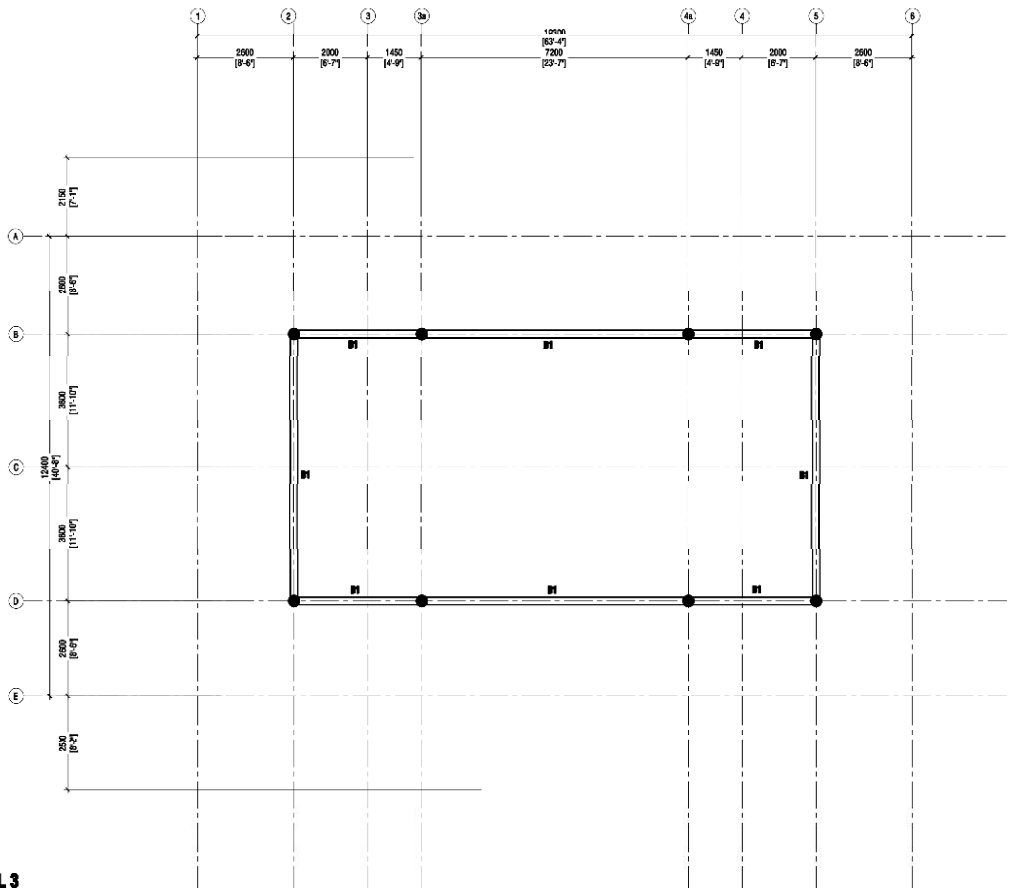
BEAM PLAN@ LEVEL 1&2
SCALE 1:100
0 0.5 1 2 3 4 5 6

PROJECT:
TH.DHIYANIGILI
MOSQUE (304 PAX)



INFRASTRUCTURE
DEVELOPMENT SECTION

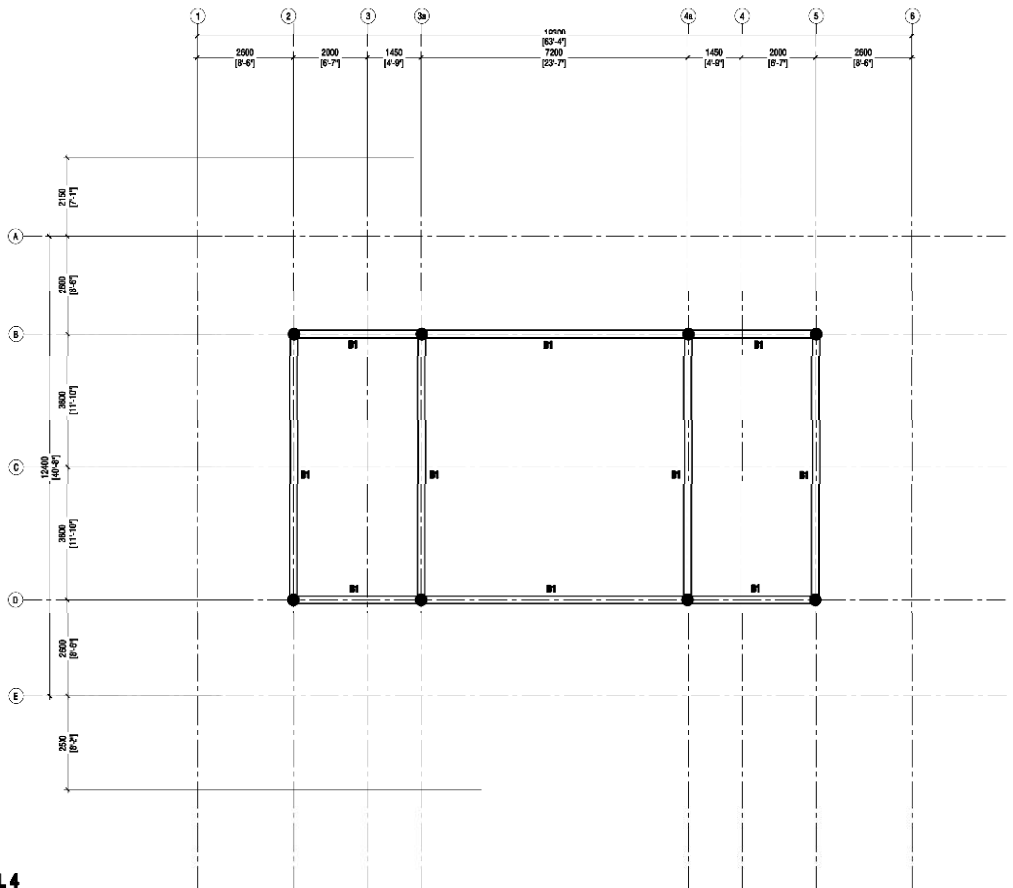
MINISTRY OF ISLAMIC
AFFAIRS



PROJECT:
TH.DHIYAMIGILI
MOSQUE (304 PAX)



MINISTRY OF ISLAMIC
AFFAIRS

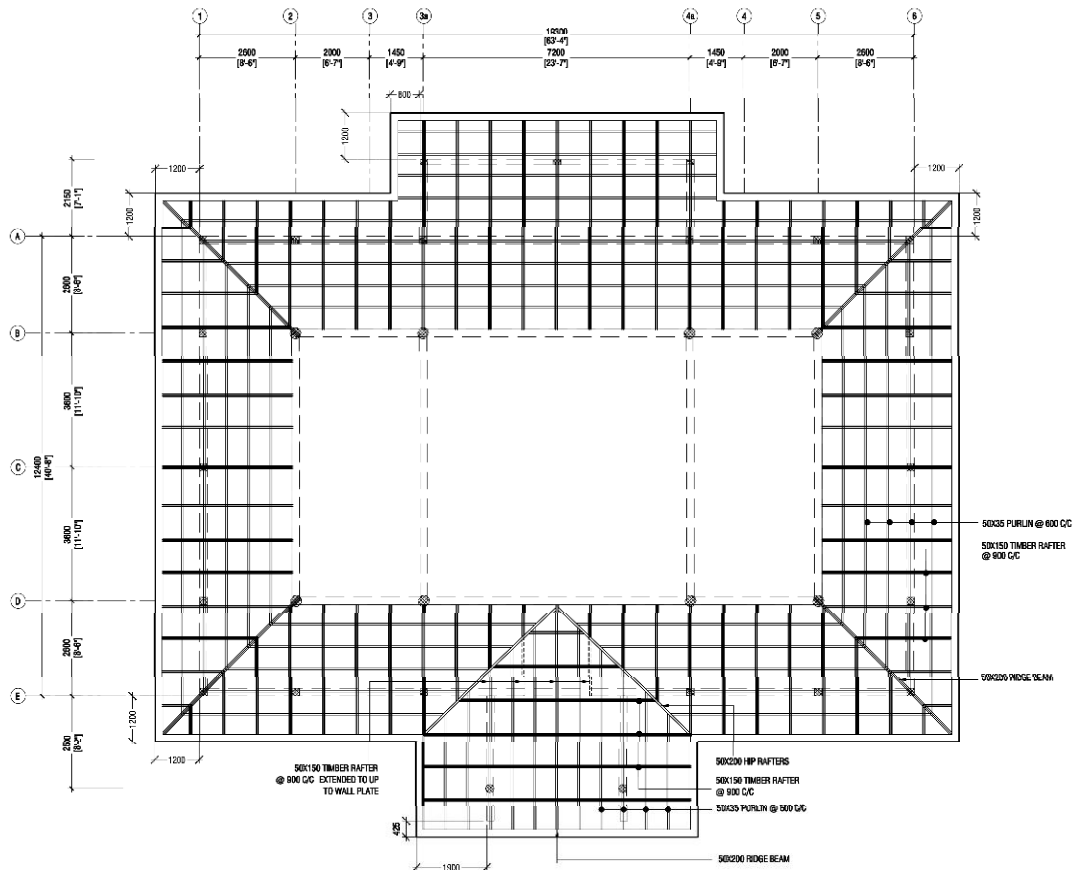


BEAM PLAN@ LEVEL 4
SCALE 1:100

PROJECT:
TH.DHIYAMIGILI
MOSQUE (304 PAX)



INFRASTRUCTURE
DEVELOPMENT SECTION
MINISTRY OF ISLAMIC
AFFAIRS



ROOF FRAMING PLAN (level 1)

SCALE 1:100

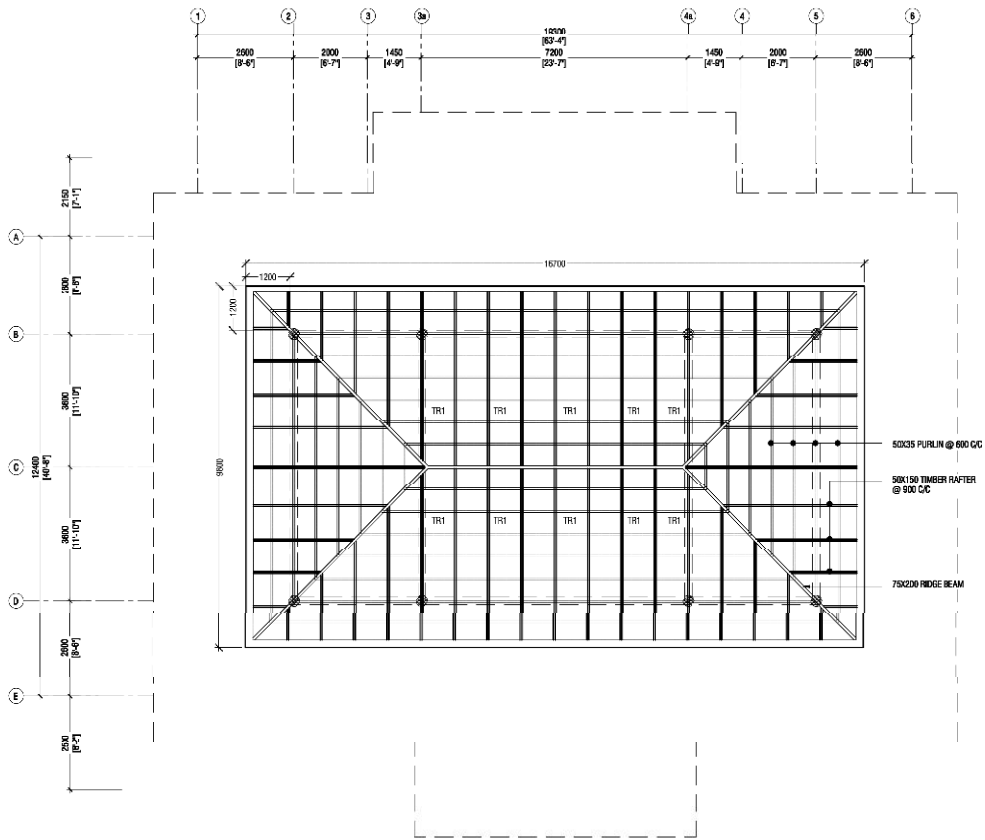
0 0.5 1 2 3 4 5

PROJECT
TH.DHIYANIGILI
MOSQUE (304 PAX)



INFRASTRUCTURE
DEVELOPMENT SECTION

MINISTRY OF ISLAMIC
AFFAIRS



ROOF FRAMING PLAN (level 2)

SCALE 1:100

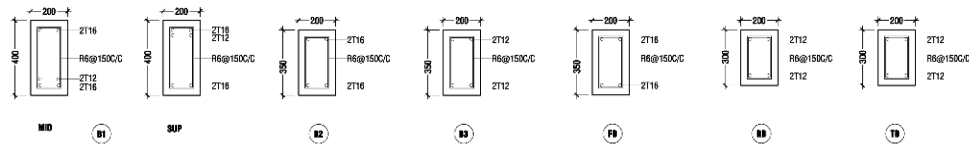
0 0.5 1 2 3 4 5

PROJECT:
TH.DHIYAMIGILI
MOSQUE (304 PAX)

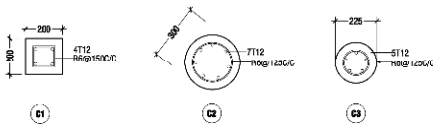


INFRASTRUCTURE
DEVELOPMENT SECTION

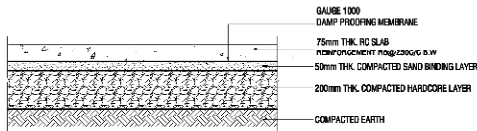
MINISTRY OF ISLAMIC
AFFAIRS



BEAM DETAILS

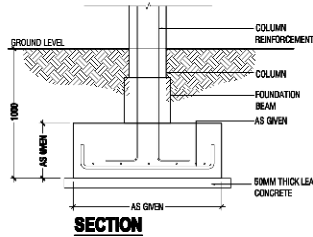
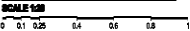


COLUMN DETAILS

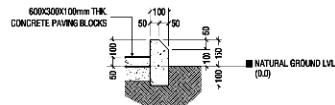


GROUND SLAB DETAIL

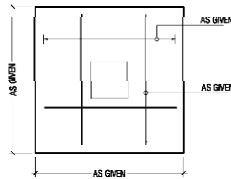
STRUCTURAL DETAILS



SECTION



CONCRETE CURB DETAIL



PLAN

TYPE	SIZE	REINFORCEMENT
F1	1000x1000x300	T10 @ 150 C/C BW (80T)
F2	750x750x300	T10 @ 150 C/C BW (60T)
F3	600x600x300	T10 @ 125 C/C BW (60T)
F4	500x500x300	T10 @ 125 C/C BW (60T)

FOOTING PAD DETAILS

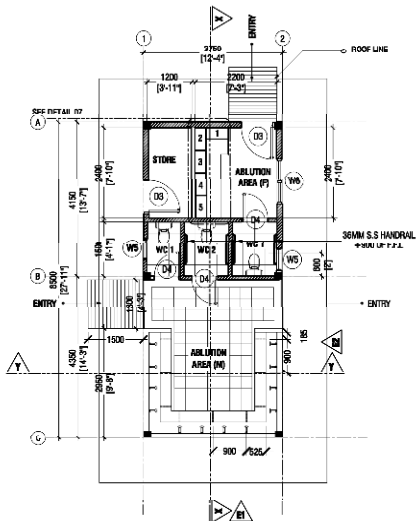
PROJECT:
TH.DHIYANIGILJ
MOSQUE (304 PAX)



INFRASTRUCTURE
DEVELOPMENT SECTION

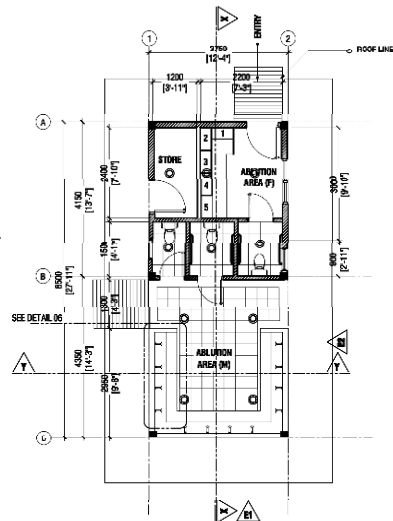
MINISTRY OF ISLAMIC
AFFAIRS

ABLUTION AREA
(ARCHITECTURAL & STRUCTURAL)



PLAN (ABLUTION)

SCALE 1:100



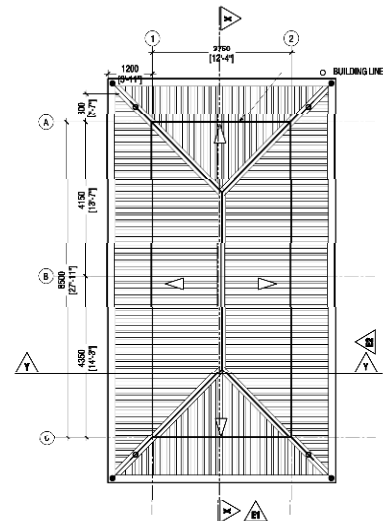
REFLECTED CEILING PLAN (ABLUTION)

SCALE 1:100



LEGEND:

- RECESSED DOWNLIGHT 750
- W/ GLASS DIFFUSERS-FL10W
- LAMP FOR NORMAL
- FLAT CEILING



ROOF PLAN (ABLUTION)

SCALE 1:100

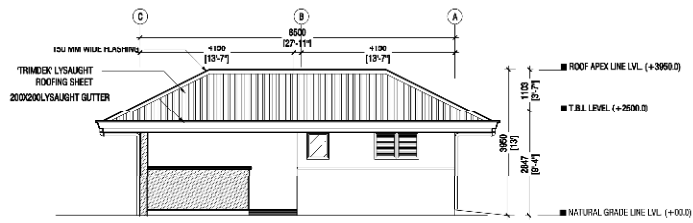


PROJECT:
TH.DHIYAMIGILI
MOSQUE (304 PAX)



INFRASTRUCTURE
DEVELOPMENT SECTION

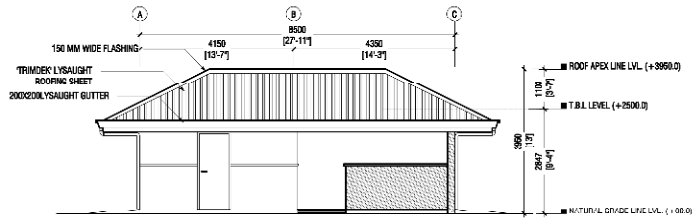
MINISTRY OF ISLAMIC
AFFAIRS



ELEVATION E2 (ABLUTION)

SCALE 1:100

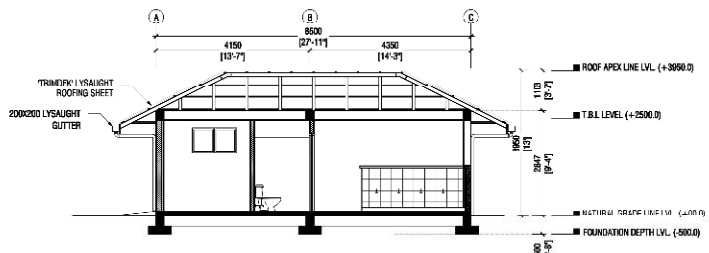
0 0.5 1 2 3 4 5



ELEVATION E4 (ABLUTION)

SCALE 1:100

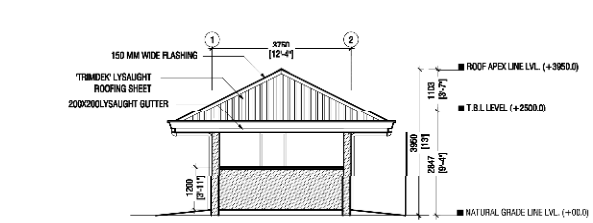
0 0.5 1 2 3 4 5



SECTION X-X (ABLUTION)

SCALE 1:100

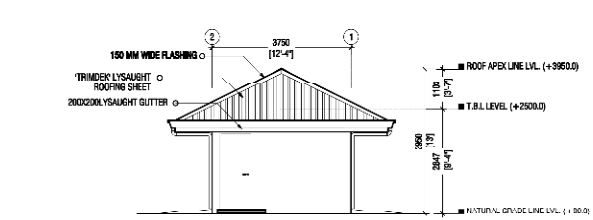
0 0.5 1 2 3 4 5



ELEVATION E1 (ABLUTION)

SCALE 1:100

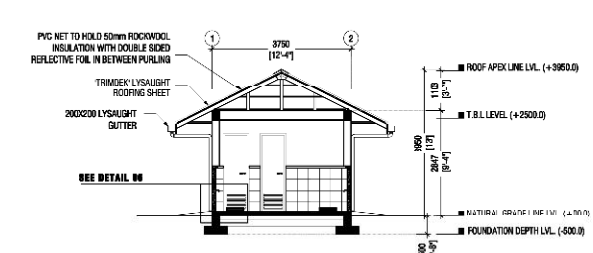
0 0.5 1 2 3 4 5



ELEVATION E3 (ABLUTION)

SCALE 1:100

0 0.5 1 2 3 4 5



SECTION Y-Y (ABLUTION)

SCALE 1:100

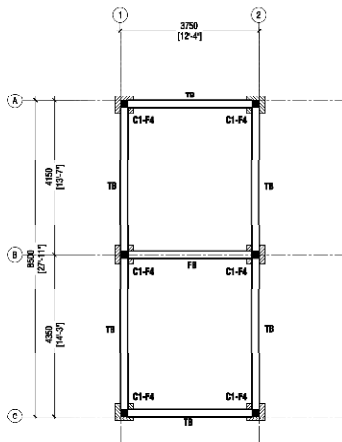
0 0.5 1 2 3 4 5

PROJECT:
TH.DHIYAMIGILI
MOSQUE (304 PAX)



INFRASTRUCTURE
DEVELOPMENT SECTION

MINISTRY OF ISLAMIC
AFFAIRS

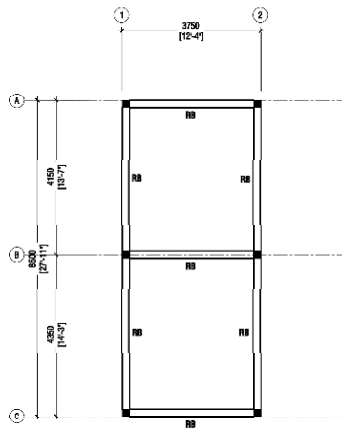


FOUNDATION PLAN (ABLUTION)

SCALE 1:100

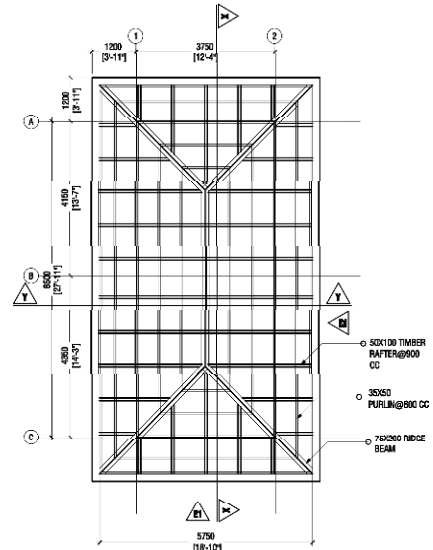


- FOUNDATION depth - 500mm
- 75mm THICK GROUND SLAB ON FILL REINFORCED WITH RB@250 C/C B/W @



BEAM PLAN (ABLUTION)

SCALE 1:100



ROOF FRAMING PLAN (ABLUTION)

SCALE 1:100

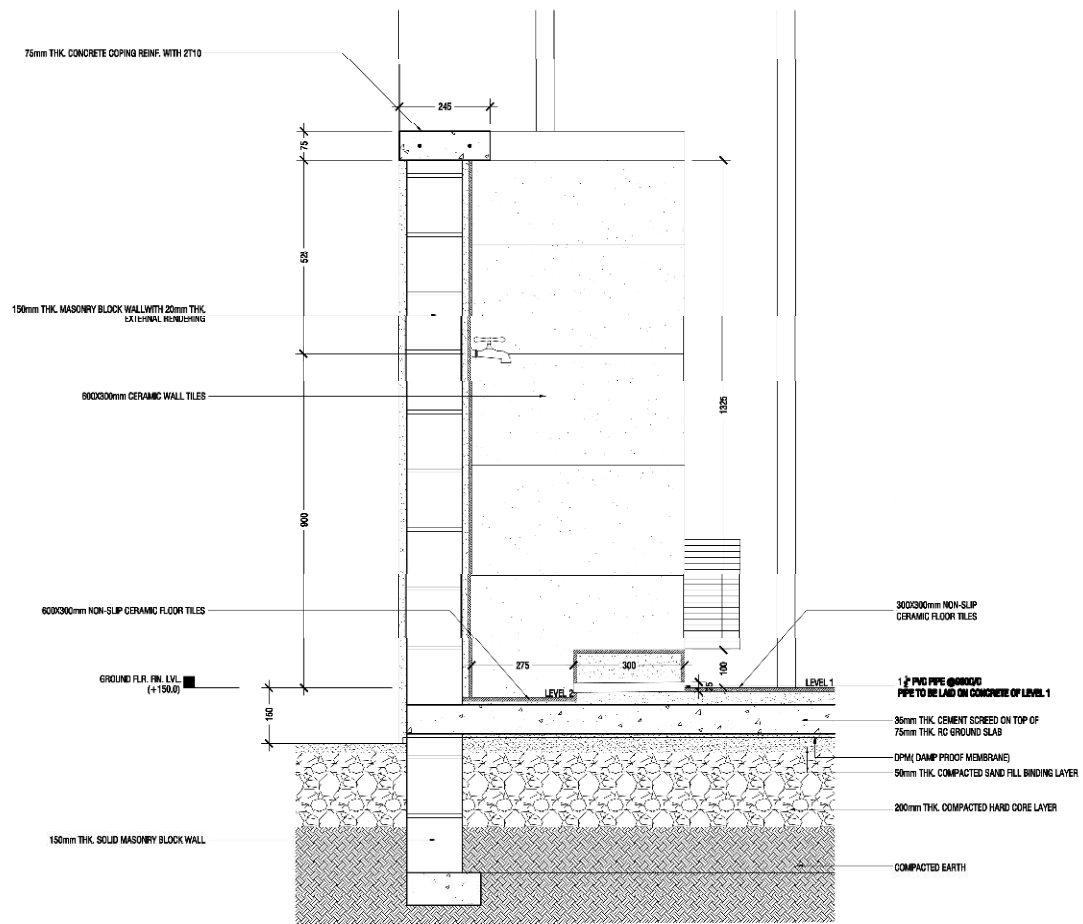


PROJECT:
TH.DHIYANIGILI
MOSQUE (304 PAX)



INFRASTRUCTURE
DEVELOPMENT SECTION

MINISTRY OF ISLAMIC
AFFAIRS



DETAIL 07

SCALE 1:10

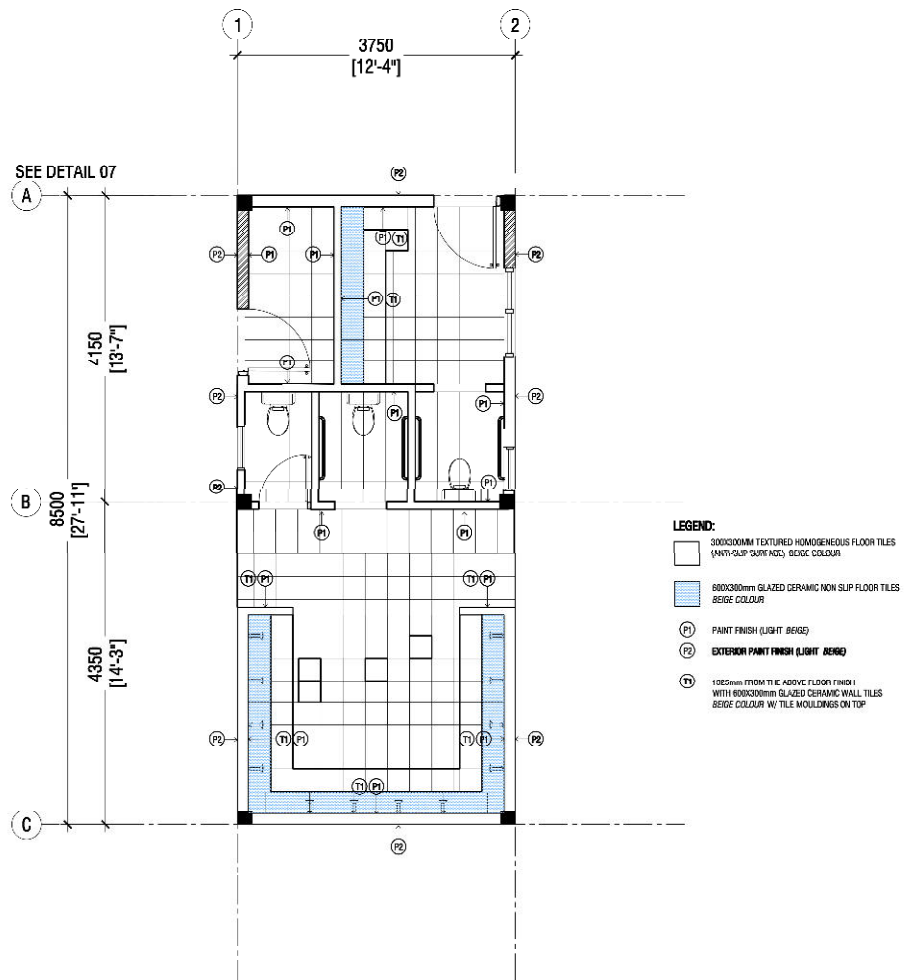


PROJECT:
TH. DHYANIGILJ
MOSQUE (304 PAX)



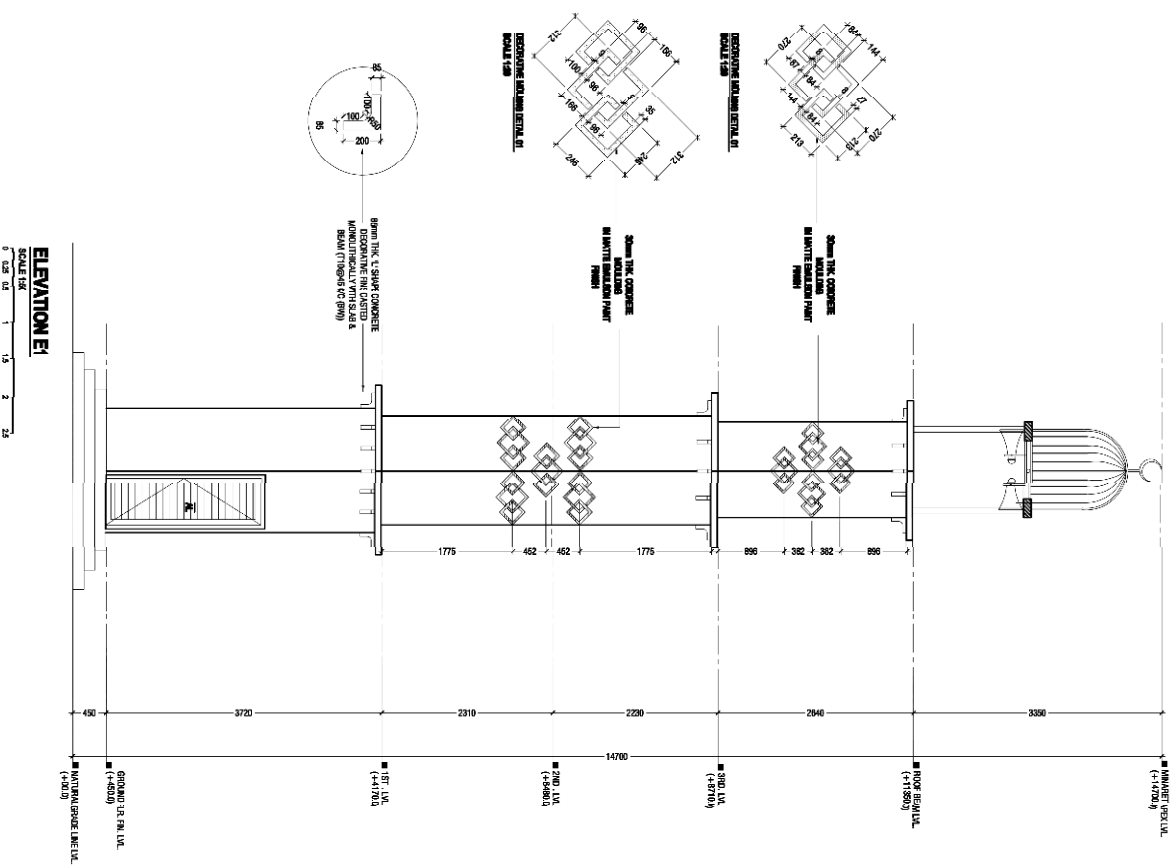
INFRASTRUCTURE
DEVELOPMENT SECTION

MINISTRY OF ISLAMIC
AFFAIRS



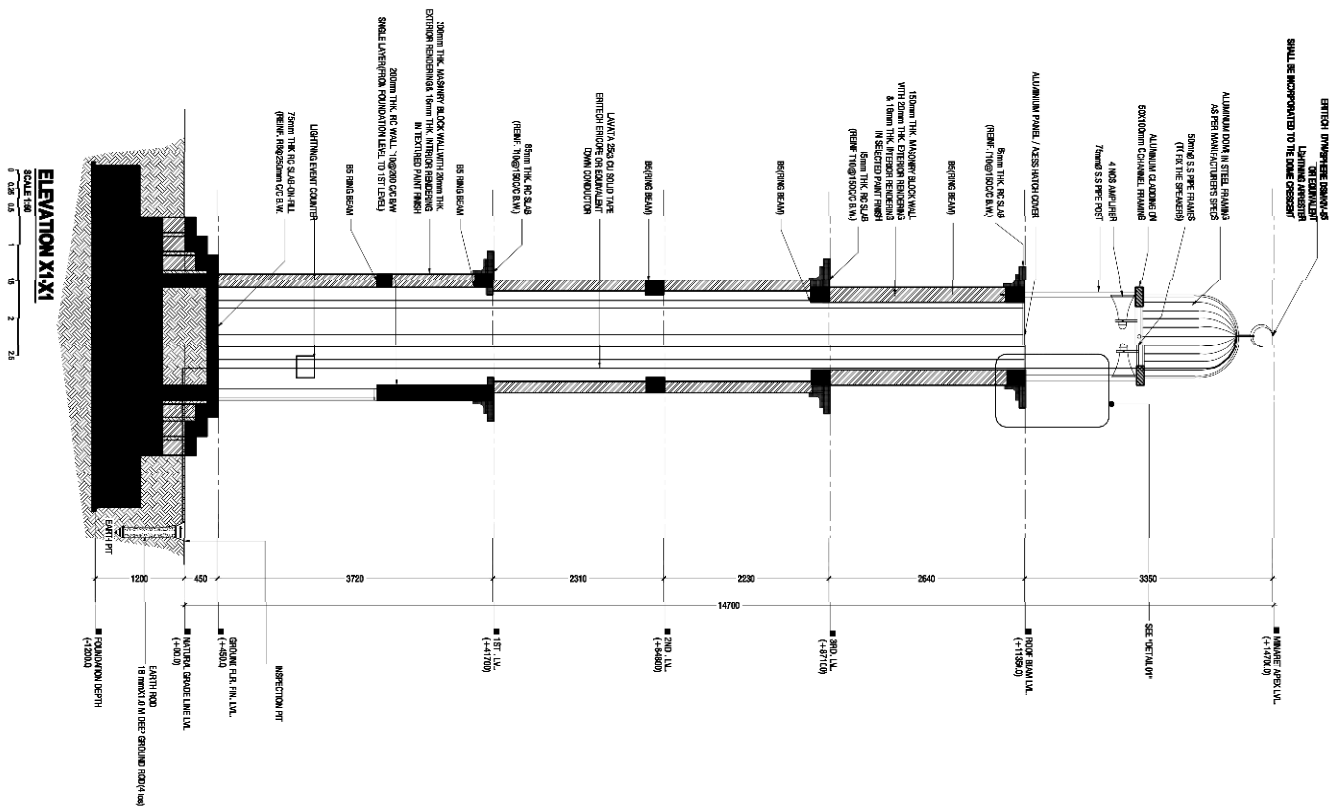
MINARET
(ARCHITECTURAL & STRUCTURAL)

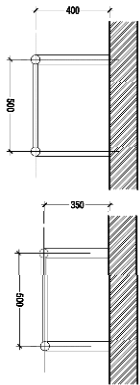
SCALE 1:50



PROJECT
THODHYAMQIL
MOSQUE (304 7AX)

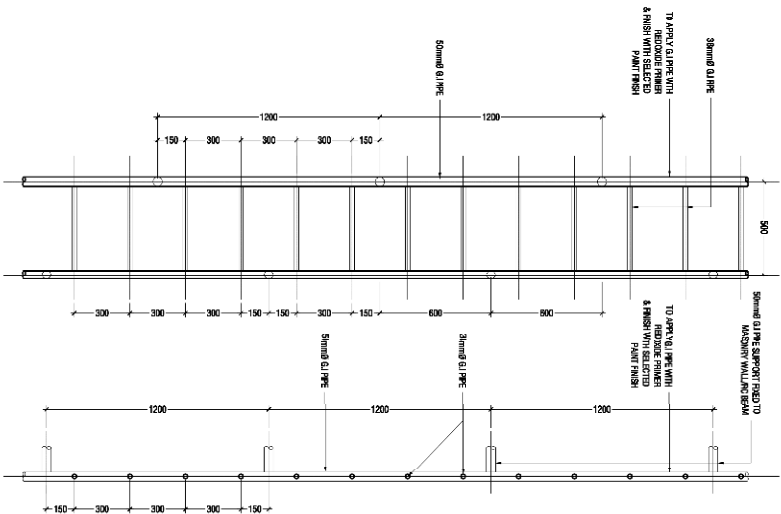
INFRASTRUCTURE
DEVELOPMENT SECTION
MINISTRY OF ISLAMIC
AFFAIRS





PLAN
GROUND FLOOR

PLAN
ABOVE 2ND FLOOR



ELEVATION

SECTION

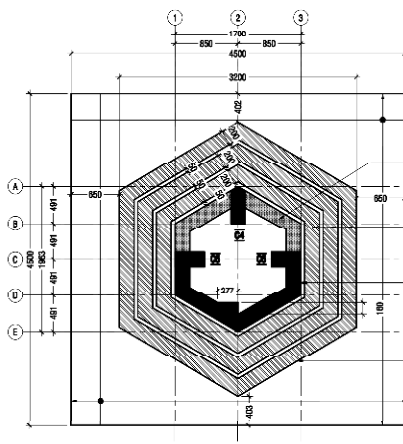
CAT LADDER DETAIL
SCALE 1/8"

PROJECT: AL-BAYT AL-NAJAF

PROJECT:
THODRYAMQIL
MOSQUE (304 3AX)



INFRASTRUCTURE
DEVELOPMENT SECTION
MINISTRY OF ISLAMIC
AFFAIRS



NOTE:

FOUNDATION DEPTH : 1200mm BELOW GROUND LEVEL.

RAFT SLAB THICKNESS : 800mm

BOTTOM REINFORCEMENT : T12@200mm B.W. (AS SHOWN)

TOP REINFORCEMENT : 800mm

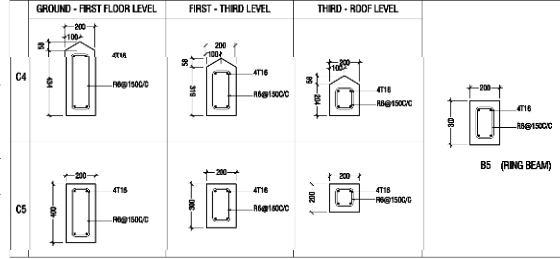
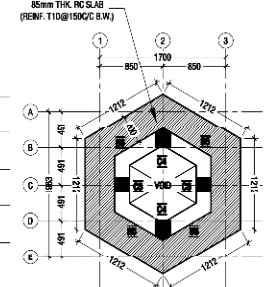
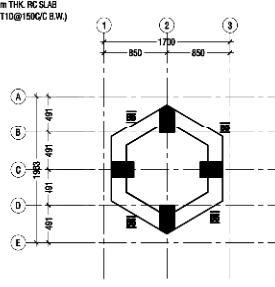
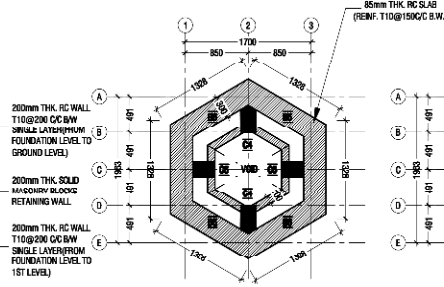
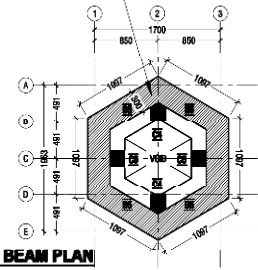
GROUND FLOOR SLAB THICKNESS : 75mm

REINFORCEMENT : R6@200mm B.W. (BOTTOM)

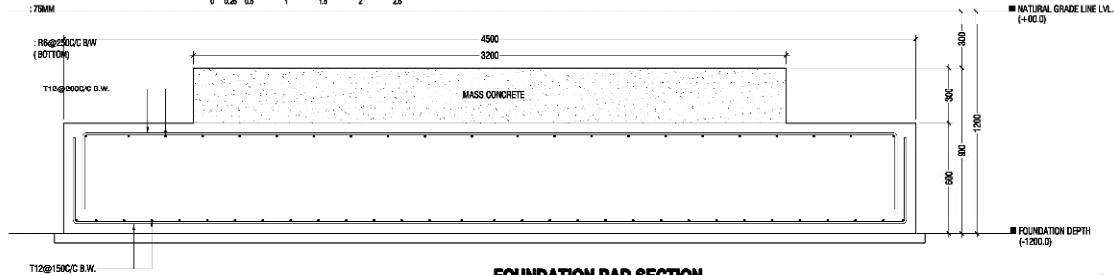
T12@200mm B.W.

ROOF LEVEL BEAM PLAN
SCALE 1:50

0 0.5 1 1.5 2 2.5



STRUCTURAL DETAILS



MINARET DETAILS 02
SCALE 1:50

0 0.5 1 1.5 2 2.5

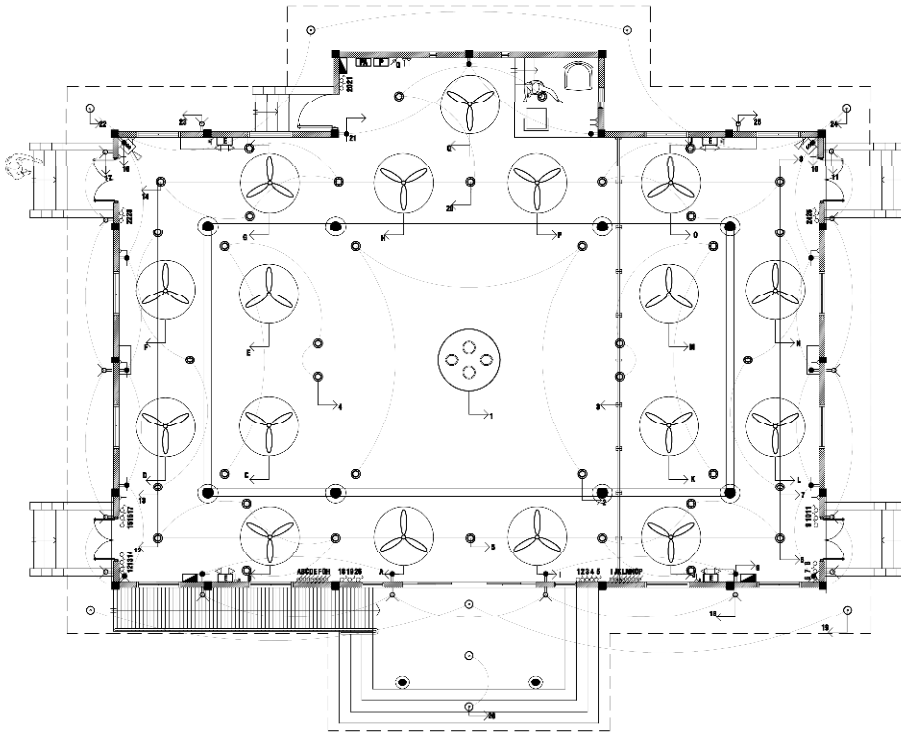
PROJECT:
TH.DHIYAMIGILI
MOSQUE (304 PAX)



INFRASTRUCTURE
DEVELOPMENT SECTION

MINISTRY OF ISLAMIC
AFFAIRS

SERVICES DRAWINGS

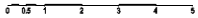


LEGEND:

- WALL MOUNTED EMERGENCY LIGHT
- DISTRIBUTION BOARD
- PANEL BOARD
- PUSH B.T. SWITCHES SYSTEM
- SWITCH
- 13 AMP 2 GANG SOCKET OUTLET (250 ABOVE FLOOR FINISH)
- 13 AMP SINGLE GANG SOCKET OUTLET (250 ABOVE FLOOR FINISH)
- HIGH SOCKET FIXED @5000 ABOVE FLOOR FINISH
- FIXED WALL SPEAKER BOTTOM END @2000 ABOVE FLOOR FINISH
- 1200 DIA. CEILING FAN @2400 ABOVE FLOOR FINISH
- LIGHTING:**
- CHANDELIER (20000 LUMENS OUTPUT LIGHT) DROP CHORD HANGING @4500 ABOVE FLOOR FINISH
- ROOF EAVES FIXED DOWNLIGHT (2500 LUMENS OUTPUT LIGHT)
- WALL MOUNTED LIGHTS (2500 LUMENS OUTPUT LIGHT @1800 ABOVE FLOOR FINISH (WEATHERPROOF))
- CEILING DROP LIGHTS (3000 LUMENS OUTPUT LIGHT)

MOSQUE LIGHTING LAYOUT

SCALE 1:100

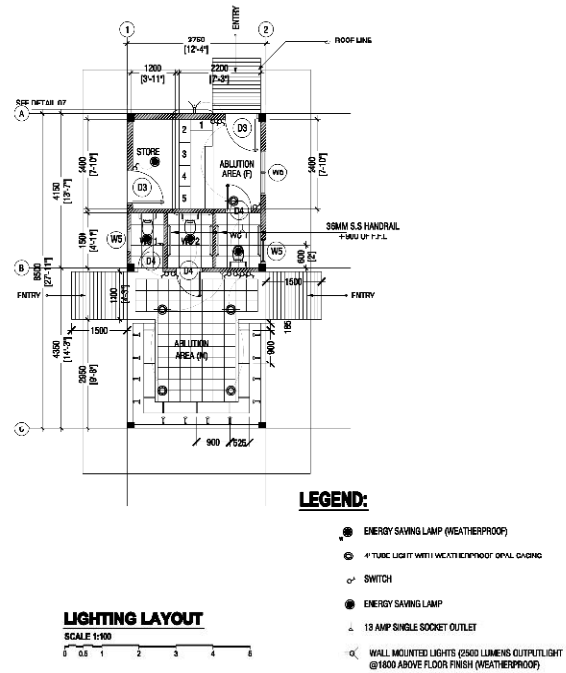
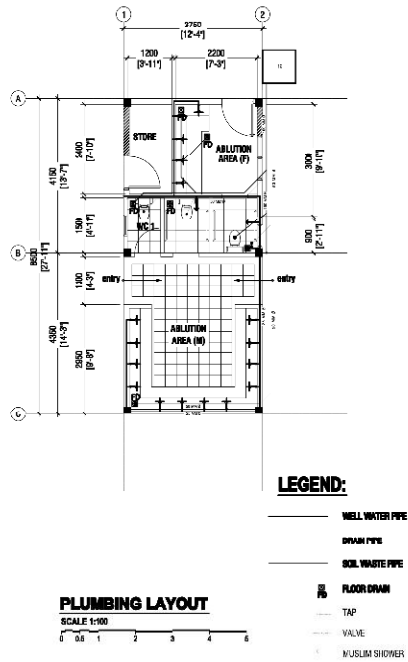


PROJECT:
TH.DHIYAMIGILI
MOSQUE (304 PAX)



INFRASTRUCTURE
DEVELOPMENT SECTION

MINISTRY OF ISLAMIC
AFFAIRS

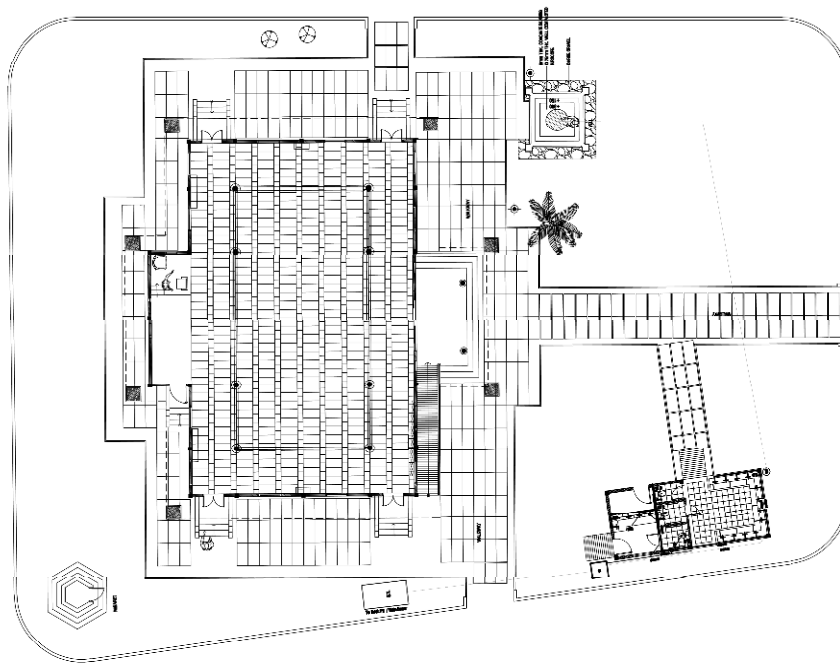


PROJECT:
TH.DHIYAMIGILI
MOSQUE (304 PAX)



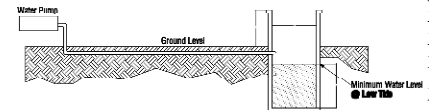
INFRASTRUCTURE
DEVELOPMENT SECTION

MINISTRY OF ISLAMIC
AFFAIRS



SITE PLUMBING PLAN

SCALE 1:200



GROUND WATER CONNECTION DETAIL
SH-10

Learning:

- [illegible]

NOTE :-

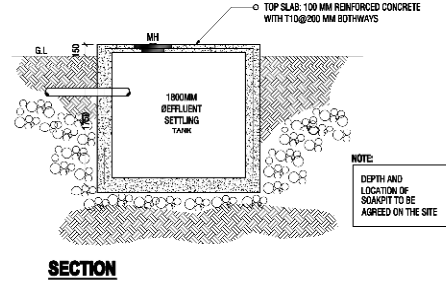
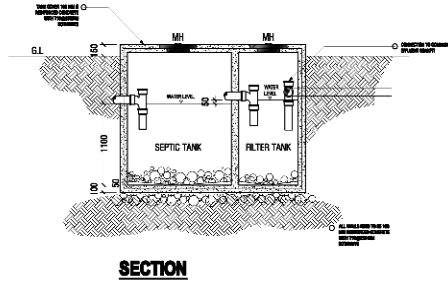
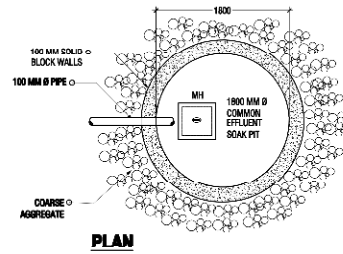
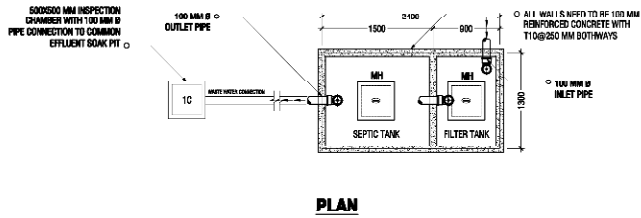
LOCATION OF PUMP & SEPTIC TANK
TO BE DECIDED BASED ON SITE
ORIENTATION.

PROJECT :
TH.DHIYANIGILI
MOSQUE (304 PAX)



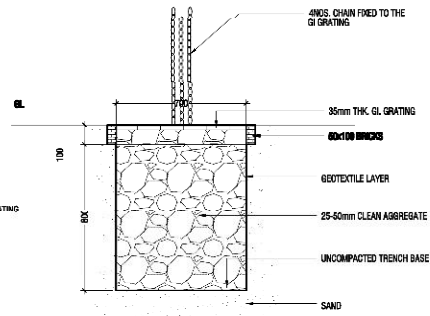
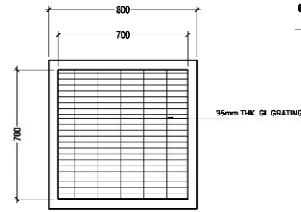
**INFRASTRUCTURE
DEVELOPMENT SECTION**

MINISTRY OF ISLAMIC
AFFAIRS



SEPTIC TANK AND COMMUNAL SOAK PIT DETAIL

SCALE: 1:20
0 0.1 0.25 0.4 0.6 0.8 1



RAIN WATER CATCH PIT DETAIL

SCALE: 1:20
0 0.1 0.25 0.4 0.6 0.8 1

PROJECT:
TH.DHIYANIGILJ
MOSQUE (304 PAX)



INFRASTRUCTURE
DEVELOPMENT SECTION

MINISTRY OF ISLAMIC
AFFAIRS