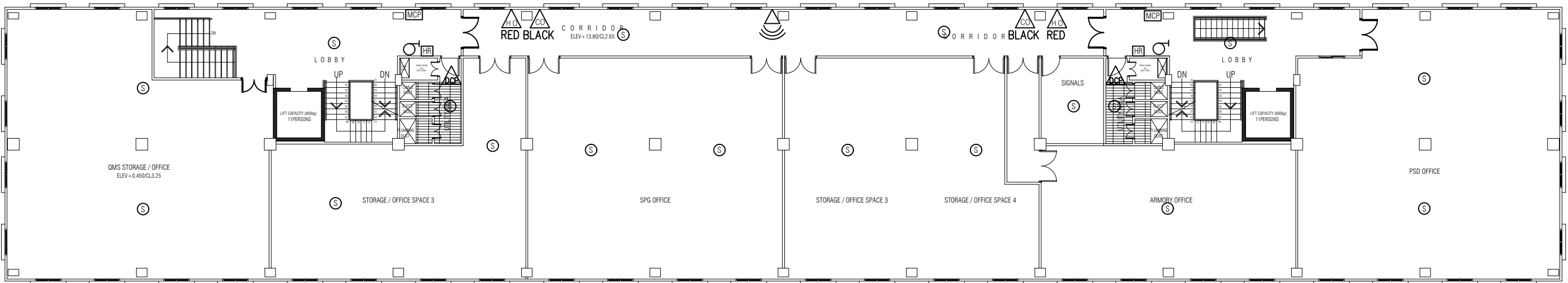


GROUND FLOOR  
**FIRE LAYOUT**  
SCALE 1:200



FIRST FLOOR  
**FIRE LAYOUT**  
SCALE 1:200

LEGEND:

SYMBOL	QUANTITY	DESCRIPTION
⑩	09	00 HEAT DETECTOR
⑨	09	18 SMOKE DETECTOR
⑧	02	02 HOSE REEL (30M LENGTH) W/HOT AIR RELEASING VALVE ON TOP FLOOR
⑦	02	02 MANUAL CALL POINT
⑥	03	02 CO2 (2kg)
⑤	01	02 WATER
④	05	02 DRY CHEMICAL POWDER (6kg DCP)
③	02	01 SOUNDER STROBE (db 85)
②	02	02 DRY RISER OUTLET W/CABINET HOSE AND NOZZLE
①	00	00 DRY RISER INLET(TWO WAY BREECHING INLET W/VALVE)
①	03	03 FIRE DOOR (WIDTH 1500)
①	01	01 FIRE DOOR (WIDTH 1200)

9 STOREY ACCOMMODATION BUILDING

BANDAARA KOSHI / MALE'

SHEET CONTENT:

RECOM. APPROVAL:

**CPT. AHMED SHARIM**  
OFFICER COMMANDING

DESIGN APPROVAL:

**BRIG.GEN.AHMED SHAHID**  
VICE CHIEF OF DEFENCE FORCE

APPROVED:

**MAJ.GEN. AHMED SHIYAM**  
CHIEF OF DEFENCE FORCE

APPROVED DATE:

DESIGNED:

**PTE MOHAMED SAIF**  
**L.CPL ALI MUTHASIM**  
Architectural

**WO1 AHMED SHAZEEL**  
Structural

CHECKED:

**CPT MOHAMED SHIFAAU**  
Architectural

**WO3 AIMINATH ALI**  
Structural

Electrical & Mechanical      Communication

DRAWN:

**PTE MOHAMED SAIF**  
**L.CPL ALI MUTHASIM**

07/08/2016

SCALE:

1:200

REVISION:

**PTE YAMIN SAEED**  
**PTE HUSSAIN QASIM**

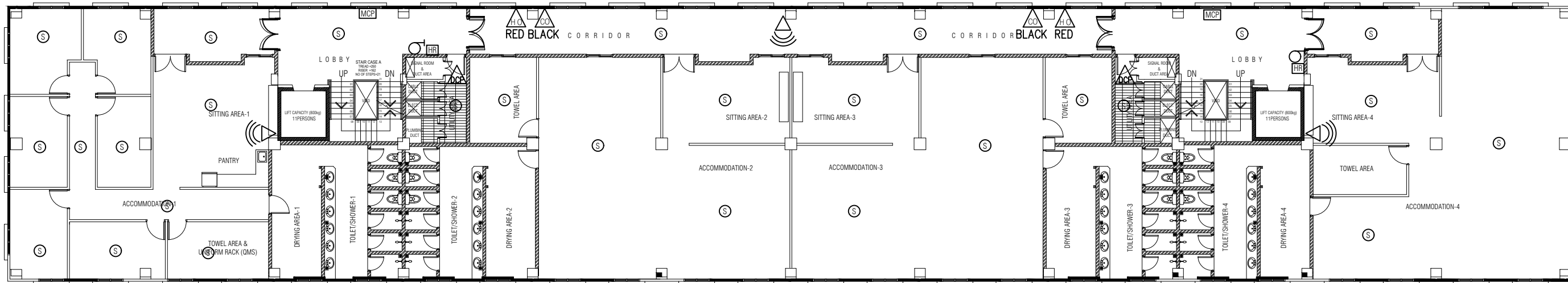
25/01/2017

SHEET NO:

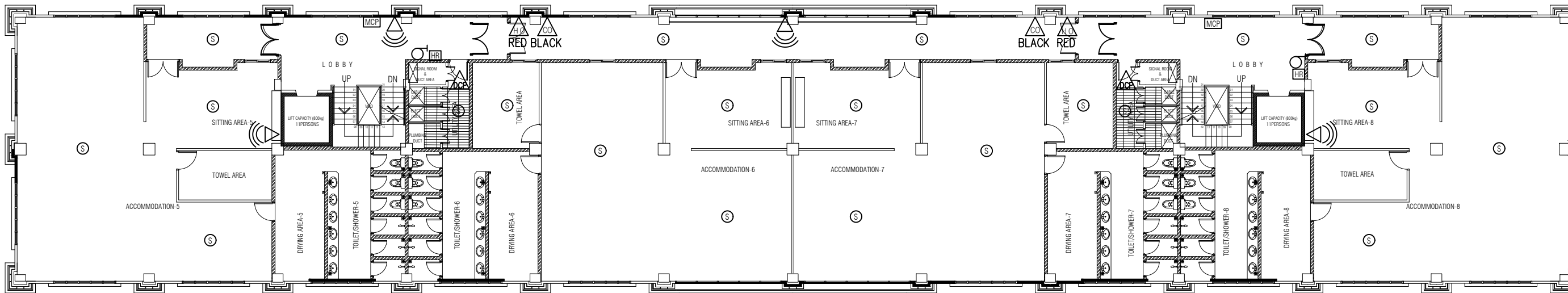


MILITARY ENGINEERS  
MALDIVES NATIONAL DEFENCE FORCE  
Male, Republic of Maldives

The drawings, concept and design contained are the properties of Military Engineers MNDf . Use of any kind or copy of whole or part of this drawing, concept or design or use on other projects or sites other than that specified on this drawing is strictly prohibited.



SECOND FLOOR  
**FIRE LAYOUT**  
SCALE 1:200



THIRD FLOOR  
**FIRE LAYOUT**  
SCALE 1:200

LEGEND:

SYMBOL	QUANTITY	DESCRIPTION
2ND 3RD		
28	22	SMOKE DETECTOR
02	02	HOSE REEL (30M LENGTH)W/HOT AIR RELEASING VALVEON TOP FLOOR
02	02	MANUAL CALL POINT
02	02	CO2 (2kg)
02	02	WATER
02	02	DRY CHEMICAL POWDER (8kg DCP)
03	03	SOUNDER STROBE (db 75)
02	02	DRY RISER INLET(TWO WAY BREACHING INLET W/VALVE)
04	04	FIRE DOOR (WIDTH 1500)

9 STOREY ACCOMMODATION BUILDING

BANDAARA KOSHI / MALE'

SHEET CONTENT:

RECOM. APPROVAL:

CPT. AHMED SHARIM  
OFFICER COMMANDING

DESIGN APPROVAL:

BRIG.GEN.AHMED SHAHID  
VICE CHIEF OF DEFENCE FORCE

APPROVED:

MAJ.GEN. AHMED SHIYAM  
CHIEF OF DEFENCE FORCE

APPROVED DATE:

DESIGNED:

PTE MOHAMED SAIF  
L.CPL ALI MUTHASIM  
Architectural

WO1 AHMED SHAZEEL  
Structural

CHECKED:

CPT MOHAMED SHIFAAU  
Architectural

WO3 AIMINATH ALI  
Structural

Electrical & Mechanical

Communication

DRAWN:

PTE MOHAMED SAIF  
L.CPL ALI MUTHASIM

07/08/2016

SCALE:

1:200

REVISION:

PTE YAMIN SAEED  
PTE HUSSAIN QASIM

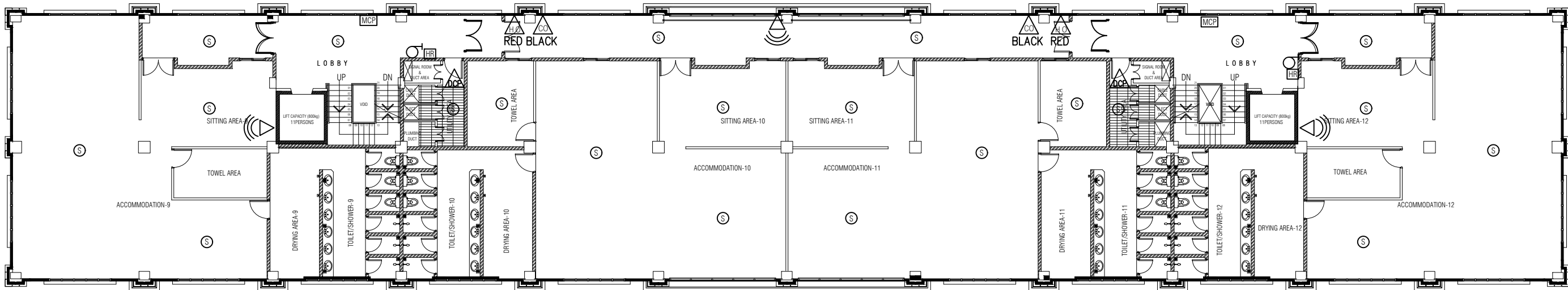
25/01/2017

SHEET NO:

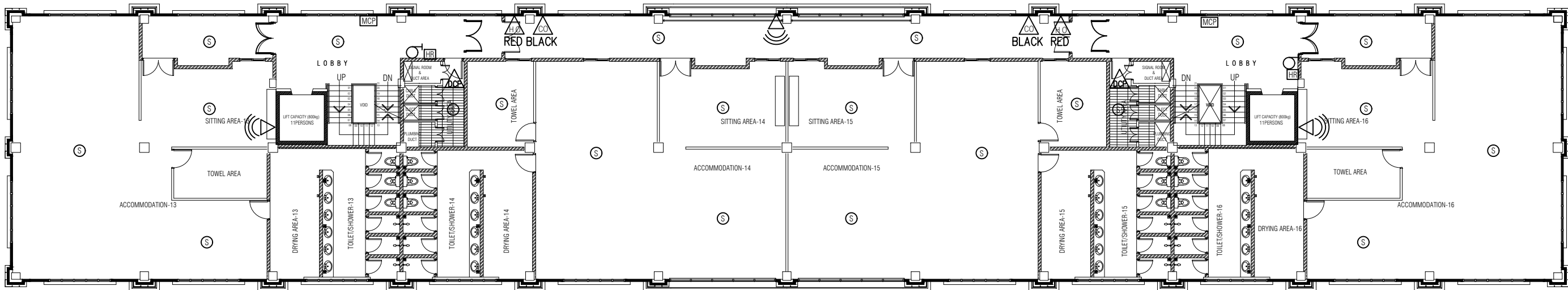


MILITARY ENGINEERS  
MALDIVES NATIONAL DEFENCE FORCE  
Male', Republic of Maldives

The drawings, concept and design contained are the properties of Military Engineers MNDf . Use of any kind or copy of whole or part of this drawing, concept or design or use on other projects or sites other than that specified on this drawing is strictly prohibited.



FOURTH FLOOR  
FIRE LAYOUT  
SCALE 1:200



FIFTH & SIXTH FLOOR  
FIRE LAYOUT  
SCALE 1:200

LEGEND:				DESCRIPTION
SYMBOL	QUANTITY	4TH	5TH	
③	20	20	20	SMOKE DETECTOR
HR	02	02	02	HOSE REEL (30M LENGTH)/W/HOT AIR RELEASING VALVE ON TOP FLOOR
MCP	02	02	02	MANUAL CALL POINT
BLACK	02	02	02	CO2 (2kg)
W	02	02	02	WATER
RED	02	02	02	DRY CHEMICAL POWDER (8kg DCP)
DCP	02	02	02	DRY CHEMICAL POWDER (8kg DCP)
SS	02	02	02	SOUNDER STROBE
RI	02	02	02	DRY RISER INLET(TWO WAY BREECHING INLET W/VALVE)
FD	04	04	04	FIRE DOOR (WIDTH 1500)

9 STOREY ACCOMMODATION BUILDING

BANDAARA KOSHI / MALE'

SHEET CONTENT:

RECOM. APPROVAL:

CPT. AHMED SHARIM  
OFFICER COMMANDING

DESIGN APPROVAL:

BRIG.GEN.AHMED SHAHID  
VICE CHIEF OF DEFENCE FORCE

APPROVED:

MAJ.GEN. AHMED SHIYAM  
CHIEF OF DEFENCE FORCE

APPROVED DATE:

DESIGNED:

PTE MOHAMED SAIF  
L.CPL ALI MUTHASIM  
Architectural

WO1 AHMED SHAZEEL  
Structural

CHECKED:

CPT MOHAMED SHIFAAU  
Architectural

WO3 AIMINATH ALI  
Structural

Electrical & Mechanical      Communication

DRAWN:

PTE MOHAMED SAIF  
L.CPL ALI MUTHASIM

07/08/2016

SCALE:

1:200

REVISION:

PTE YAMIN SAEED  
PTE HUSSAIN QASIM

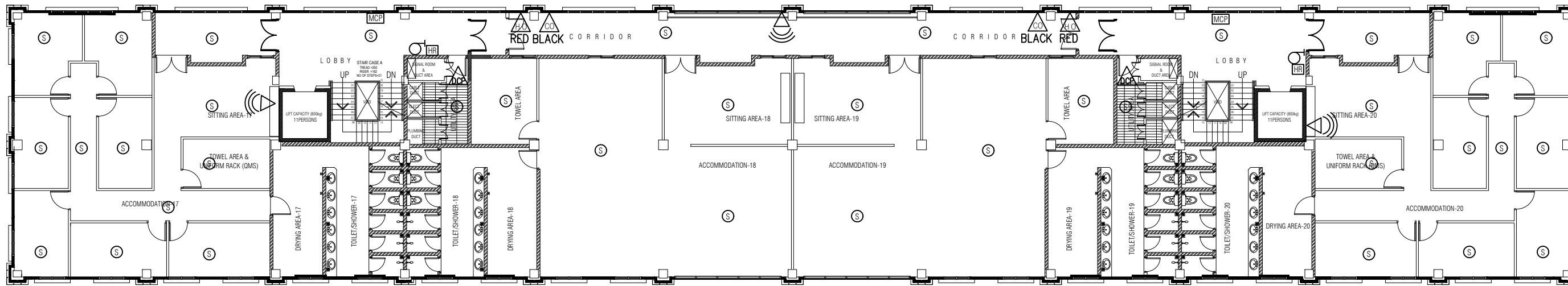
25/01/2017

SHEET NO:

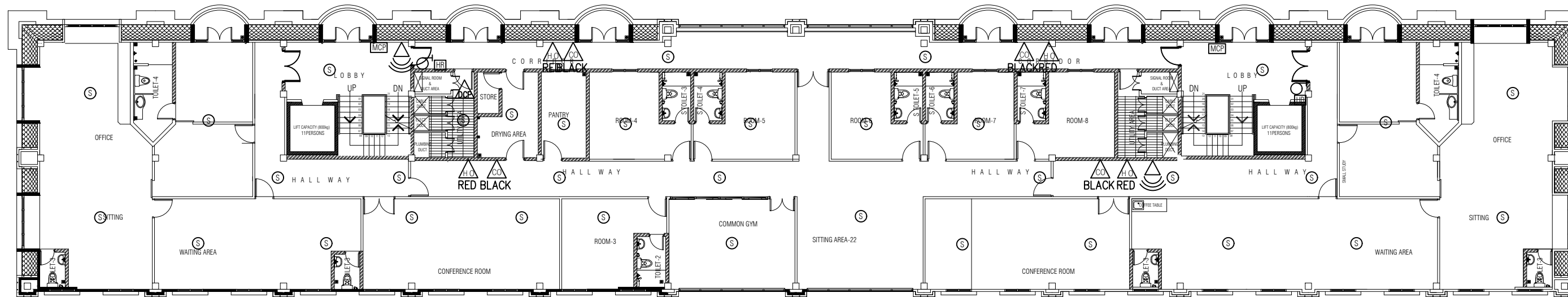


MILITARY ENGINEERS  
MALDIVES NATIONAL DEFENCE FORCE  
Male', Republic of Maldives



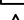
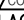



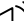


The drawings, concept and design contained are the properties of Military Engineers MNDf . Use of any kind or copy of whole or part of this drawing, concept or design or use on other projects or sites other than that specified on this drawing is strictly prohibited.



SEVENTH FLOOR  
**FIRE LAYOUT**  
SCALE 1:200



EIGHTH FLOOR  
**FIRE LAYOUT**  
SCALE 1:200

LEGEND:			
SYMBOL	QUANTITY	DESCRIPTION	
	7TH	8TH	
	36	37	SMOKE DETECTOR
	02	02	HOSE REEL (30M LENGTH)/HOT AIR RELEASING VALVE/ON TOP FLOOR
	02	02	MANUAL CALL POINT
	04	04	CO2 (2kg)
	04	04	WATER
	02	02	DRY CHEMICAL POWDER (8kg DCP)
	03	02	SOUNDER STROBE
	02	02	DRY RISER INLET(TWO WAY BREACHING INLET W/VALVE)
	04	02	FIRE DOOR (WIDTH 1500)
	00	02	FIRE DOOR (WIDTH 900)

9 STOREY ACCOMMODATION BUILDING

BANDAARA KOSHI / MALE'

SHEET CONTENT:

RECOM. APPROVAL:

**CPT. AHMED SHARIM**  
OFFICER COMMANDING

DESIGN APPROVAL:

**BRIG.GEN.AHMED SHAHID**  
VICE CHIEF OF DEFENCE FORCE

APPROVED:

**MAJ.GEN. AHMED SHIYAM**  
CHIEF OF DEFENCE FORCE

APPROVED DATE:

DESIGNED:

**PTE MOHAMED SAIF**  
**L.CPL ALI MUTHASIM**  
Architectural

**WO1 AHMED SHAZEEL**  
Structural

CHECKED:

**CPT MOHAMED SHIFAAU**  
Architectural

**WO3 AIMINATH ALI**  
Structural

Electrical & Mechanical

Communication

DRAWN:

**PTE MOHAMED SAIF**  
**L.CPL ALI MUTHASIM**

07/08/2016

SCALE:

1:200

REVISION:

**PTE YAMIN SAEED**  
**PTE HUSSAIN QASIM**

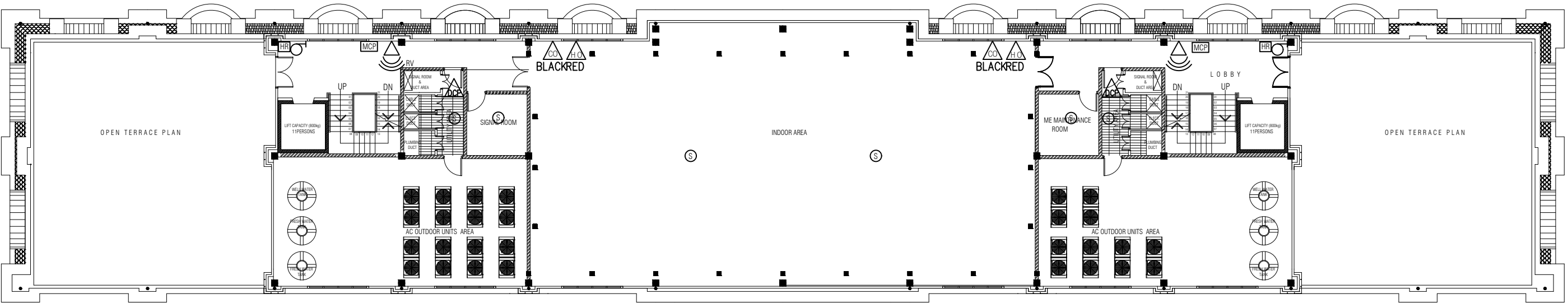
25/01/2017

SHEET NO:



MILITARY ENGINEERS  
MALDIVES NATIONAL DEFENCE FORCE  
Male', Republic of Maldives

The drawings, concept and design contained are the properties of Military Engineers MNDF . Use of any kind or copy of whole or part of this drawing, concept, or design or use on other projects or sites other than that specified on this drawing is strictly prohibited.



TERRACE FLOOR  
**FIRE LAYOUT**  
SCALE 1:200

- LEGEND:
- | SYMBOL | QUANTITY | DESCRIPTION   |
|--------|----------|---|
| S      | 04       | SMOKE DETECTOR  |
| HR     | 02       | HOSE REEL (30M LENGTH)/W/HOT AIR RELEASING VALVE ON TOP FLOOR |
| MCP    | 02       | MANUAL CALL POINT   |
| C2     | 02       | CO2 (2kg)   |
| W      | 02       | WATER   |
| SD     | 02       | SOUNDER STROBE  |
| RI     | 02       | DRY RISER INLET (TWO WAY BREACHING INLET W/VALVE)             |
| RV     | 01       | AIR RELEASING VALVE   |
| FD     | 04       | FIRE DOOR (WIDTH 1500)  |

9 STOREY ACCOMMODATION BUILDING

BANDAARA KOSHI / MALE'

SHEET CONTENT:

RECOM. APPROVAL:

**CPT. AHMED SHARIM**  
OFFICER COMMANDING

DESIGN APPROVAL:

**BRIG.GEN.AHMED SHAHID**  
VICE CHIEF OF DEFENCE FORCE

APPROVED:

**MAJ.GEN. AHMED SHIYAM**  
CHIEF OF DEFENCE FORCE

APPROVED DATE:

DESIGNED:

<b>PTE MOHAMED SAIF</b> <b>L.CPL ALI MUTHASIM</b> Architectural	<b>WO1 AHMED SHAZEEL</b> Structural
---	--

CHECKED:

<b>CPT MOHAMED SHIFAAU</b> Architectural	<b>WO3 AIMINATH ALI</b> Structural
---	---------------------------------------

Electrical & Mechanical	Communication
-------------------------	---------------

DRAWN:

<b>PTE MOHAMED SAIF</b> <b>L.CPL ALI MUTHASIM</b>	<b>PTE YAMIN SAEED</b> <b>PTE HUSSAIN QASIM</b>
--	--

07/08/2016	25/01/2017
------------	------------

SCALE:

1:200

SHEET NO:



The drawings, concept and design contained are the properties of Military Engineers MNDf . Use of any kind or copy of whole or part of this drawing, concept or design or use on other projects or sites other than that specified on this drawing is strictly prohibited.