

AMMENDMENTS

CONTENTS:

**SITE PLAN - GENERAL
ARRANGEMENT**

PROJECT:

**Adh.Omadhoo Shore
Protection - Project Area**

CLIENT:

**Ministry of Housing National
Planing Housing and Infrastructure**

DESIGNED BY:

Hussain Shiyam

DRAWN BY:

DT

DATE:

Wednesday, October 05, 2011

CHECKED BY:

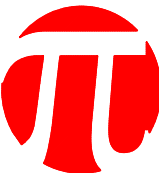
HS

FILE NAME:

Omadhoo REV0.dwg

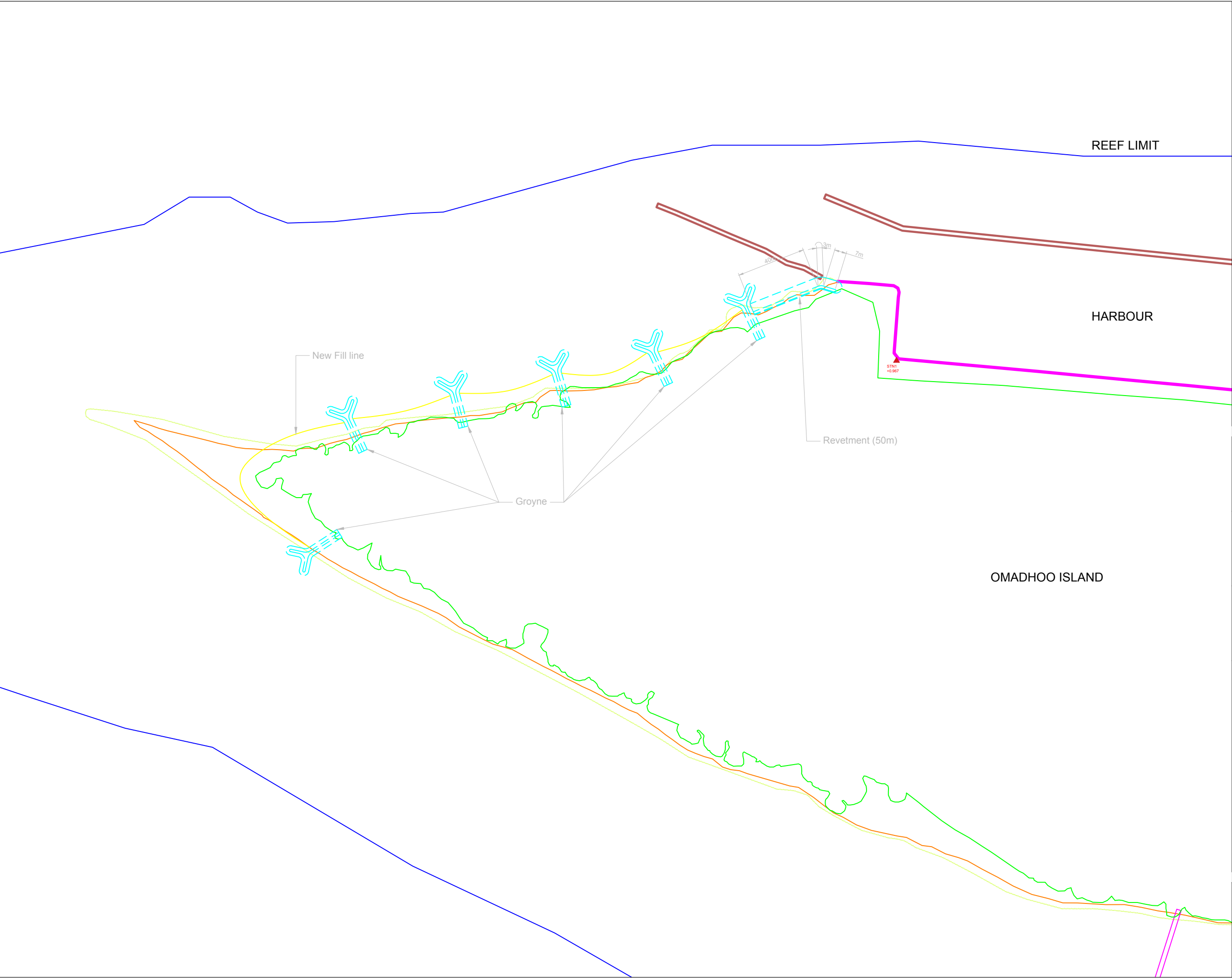
DRAWING NO: MH21-001-1-REV-0

SCALE: as shown



**Development
Collaborative
Partnership.**

**H.SNOW MOUNTAIN,
MALE - MALDIVES
admin@dcp.com.mv
+960 331 6942**



AMMENDMENTS

CONTENTS:

SITE PLAN - GENERAL
ARRANGEMENT

PROJECT:

Adh.Omadhoo Shore
Protection - Project Area

CLIENT:

Ministry of Housing National
Planing Housing and Infrastructure

DESIGNED BY:

Hussain Shiyam

DRAWN BY:

DT

DATE:

Wednesday, October 05, 2011

CHECKED BY:

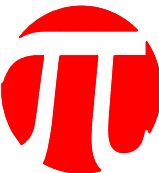
HS

FILE NAME:

Omadhoo REV0.dwg

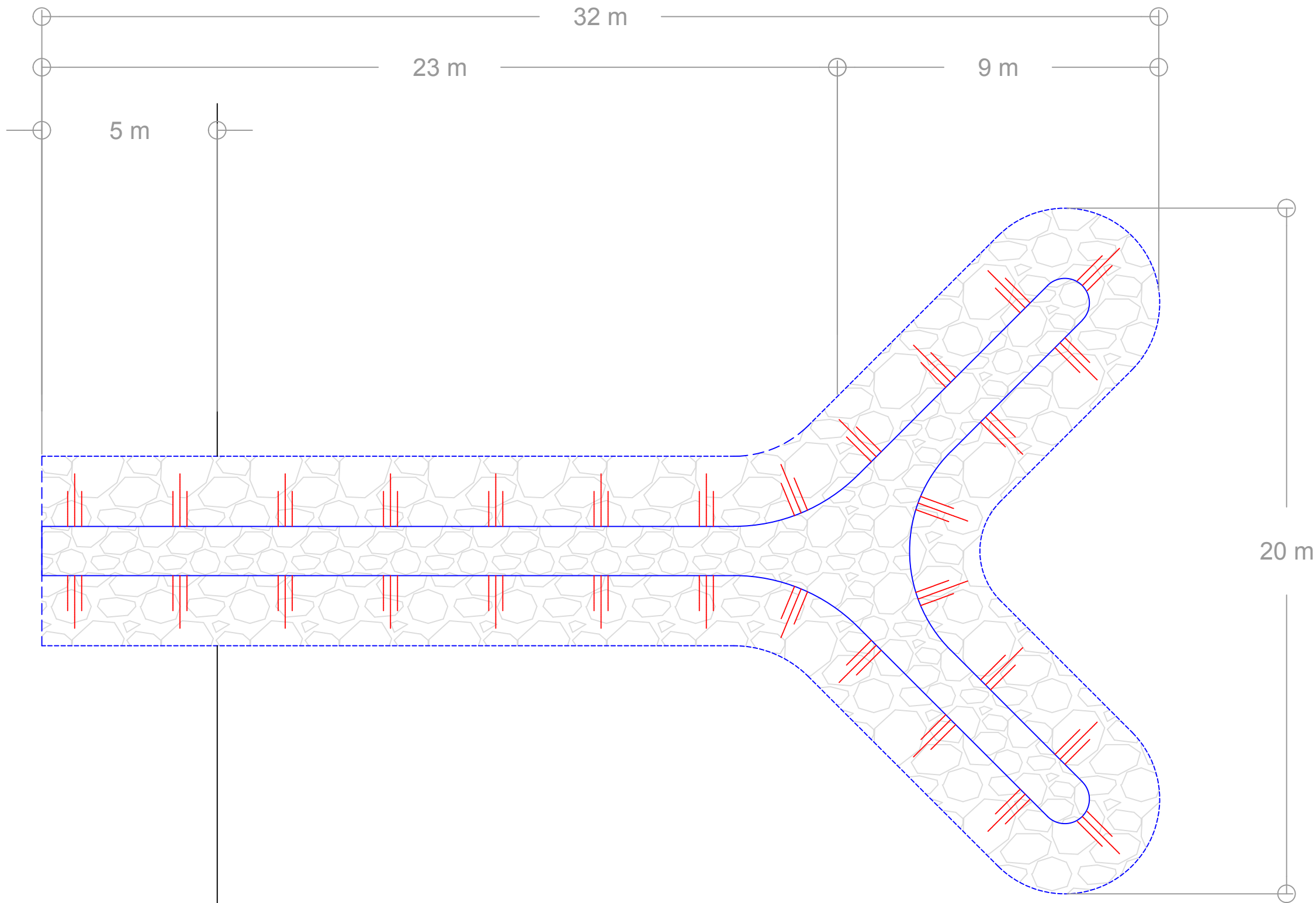
DRAWING NO: MH21-001-3-REV-0

SCALE: as shown



Development
Collaborative
Partnership.

H.SNOW MOUNTAIN,
MALE - MALDIVES
admin@dcp.com.mv
+960 331 6942



AMMENDMENTS

CONTENTS:

SITE PLAN - GENERAL
ARRANGEMENT

PROJECT:

Groyne Details

CLIENT:

Ministry of Housing National
Planing Housing and Infrastructure

DESIGNED BY:

Hussain Shiyam

DRAWN BY:

DT

DATE:

Wednesday, October 05, 2011

CHECKED BY:

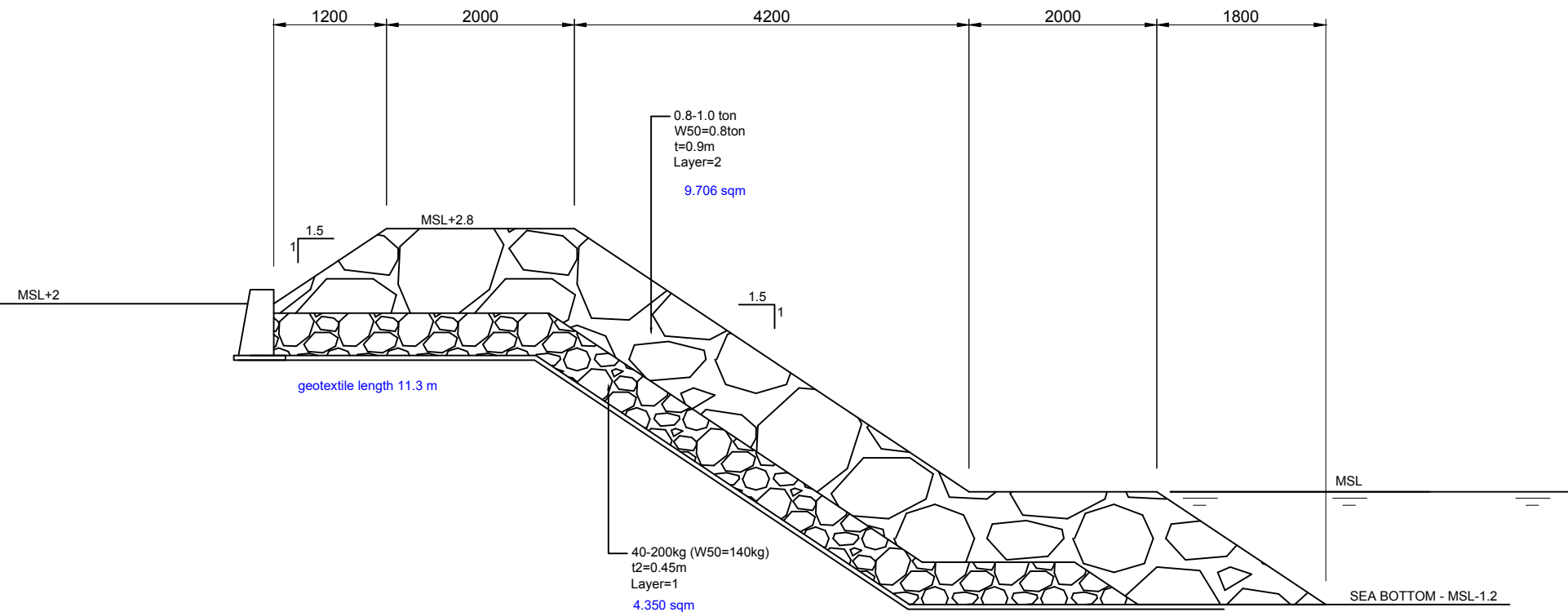
HS

FILE NAME:

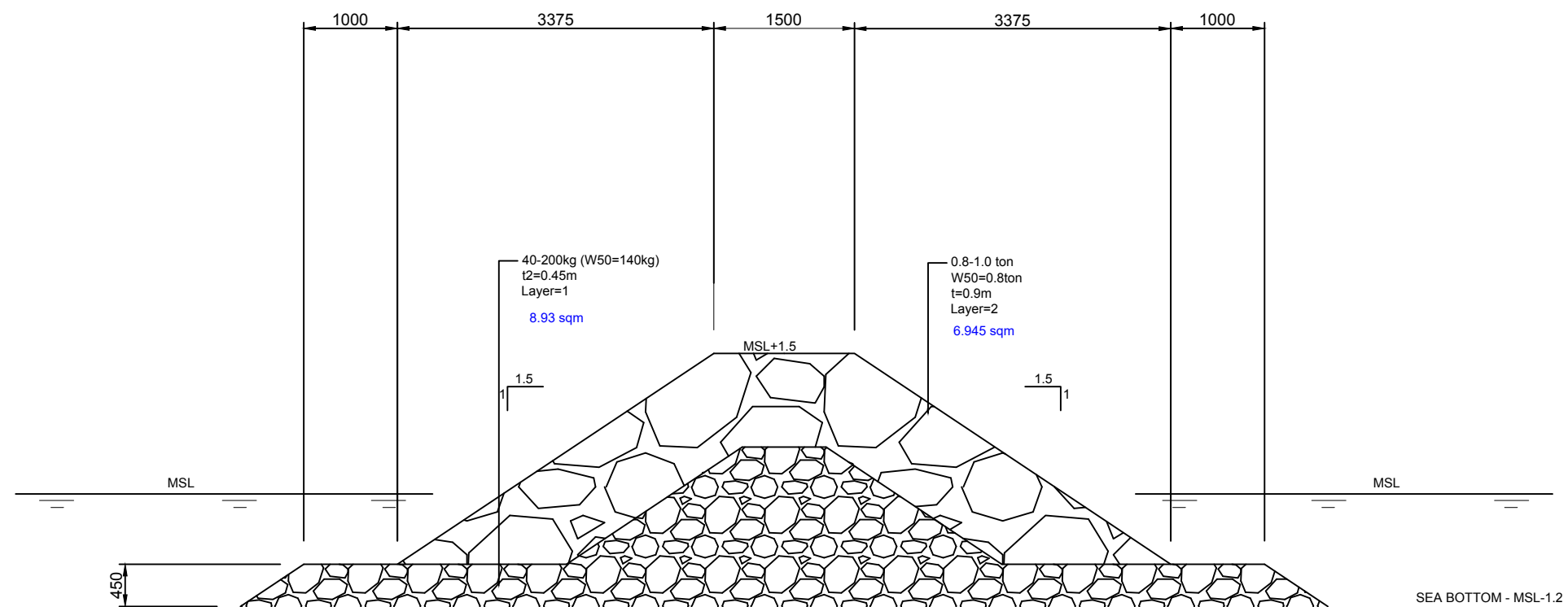
Omadhoo REV0.dwg

DRAWING NO: MH21-001-5-REV-0

SCALE: as shown

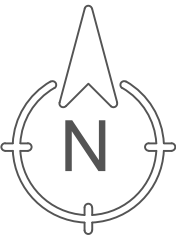
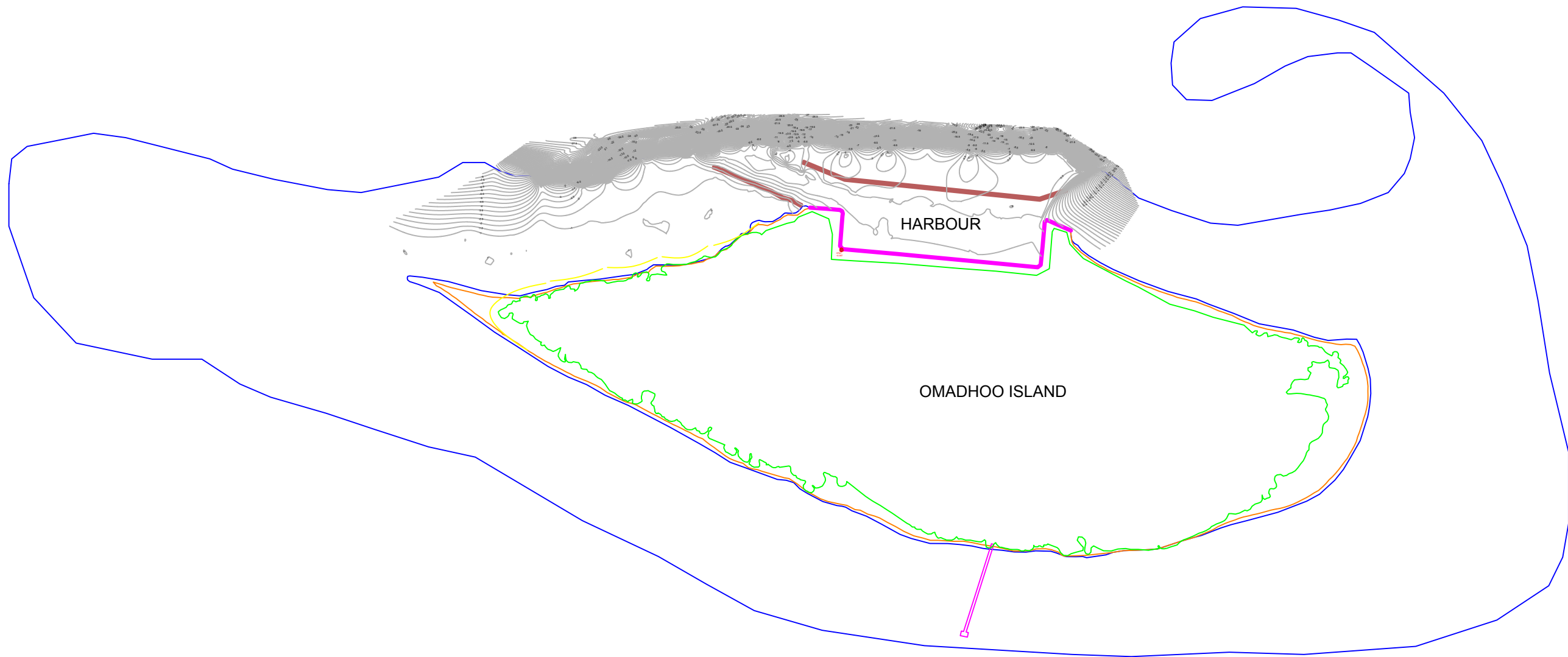


TYPICAL REVETMENT DESIGN TYPE 1 (Sea Depth < 1.2m)



TYPICAL GROUYNE Section (Sea Depth < 1.2m)

[illegible]



AMMENDMENTS

CONTENTS:

OMADHOO-BATHYMETRY

PROJECT:

**Adh.Omadhoo Shore
Protection - Project Area**

CLIENT:

**Ministry of Housing National
Planing Housing and Infrastructure**

DESIGNED BY:

Hussain Shiyam

DRAWN BY:

DT

DATE:

Wednesday, October 05, 2011

CHECKED BY:

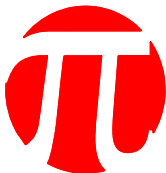
HS

FILE NAME:

Omadhoo REV0.dwg

DRAWING NO: MH21-001-2-REV-0

SCALE: as shown



**Development
Collaborative
Partnership.**

**H.SNOW MOUNTAIN,
MALE - MALDIVES
admin@dcp.com.mv
+960 331 6942**