





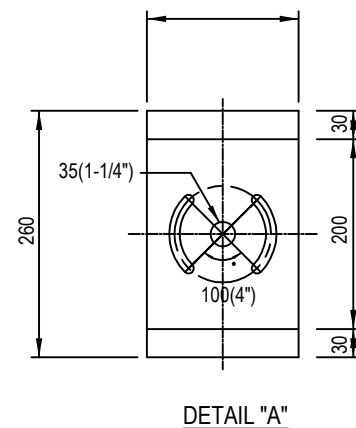
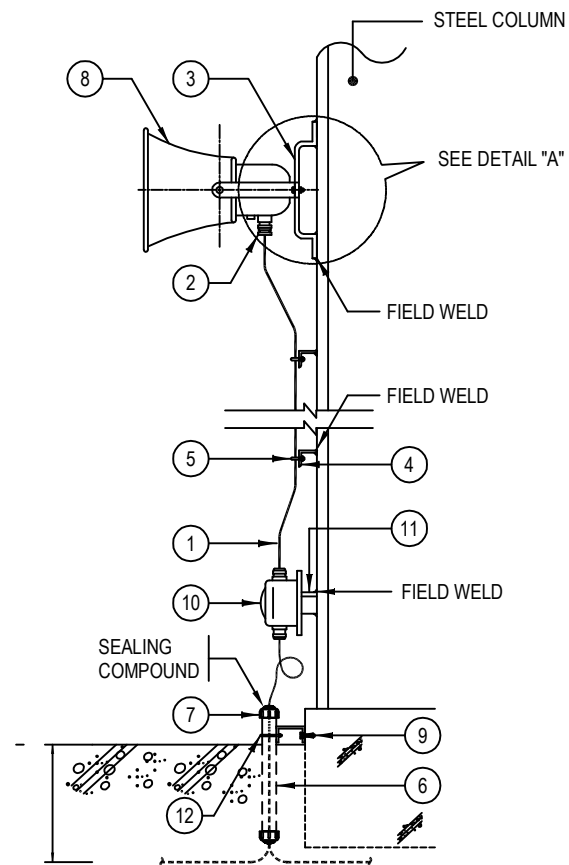


LEGEND

-  PHOTO-ELECTRIC SMOKE DETECTOR
-  EXIT LIGHT (SMALL SIZE, WALL MOUNTED YTYPE)
-  BELL (NOT ASSOCIATED WITH FIRE ALARMS)
-  FIRE ALARM CALL POINTS
-  LIGHTING PANEL
-  FIRE ALARM MANUAL STATION (BELL & CALL POINT)



MATERIAL LIST				
NO.	DESCRIPTION	UNIT	Q'TY	REMARK
1	LOCKNUT & BUSHING	EA		
2	OUTLET BOX & COVER	EA		
3	FLEXIBLE CONNECTOR	EA		
4	GUN STUD ANCHOR	EA		
5	CONDUIT	M		
6	"-1" ANGLE	M		
7	FLEXIBLE CONDUIT	M		
8	FLEXIBLE CONNECTOR	EA		
9	CEILING	EA		
10	FIRE DETECTOR	EA		
11	FIRE DETECTOR			
12	FIRE DETECTOR			



CLIENT: MINISTRY OF ENVIRONMENT
AND ENERGY

CONSULTANCY SERVICES FOR DESIGN OF WATER SUPPLY FACILITIES IN Ha.HORAFUSHI,
Hdh.HANIMAADHOO,Sh.MILANDHOO,R.UNGOOFAARU,Lh.NAIFARU,Dh,KUDAHUVADHOO
,Th.GURAI DHOO AND Ga.VILLINGILI , MALDIVES

DESIGN
ENGINEER

DRAWN

CHECKED
DESIGN CHIEF

APPROVED

SL.NO
DRWING
NO

DESCRIPTION

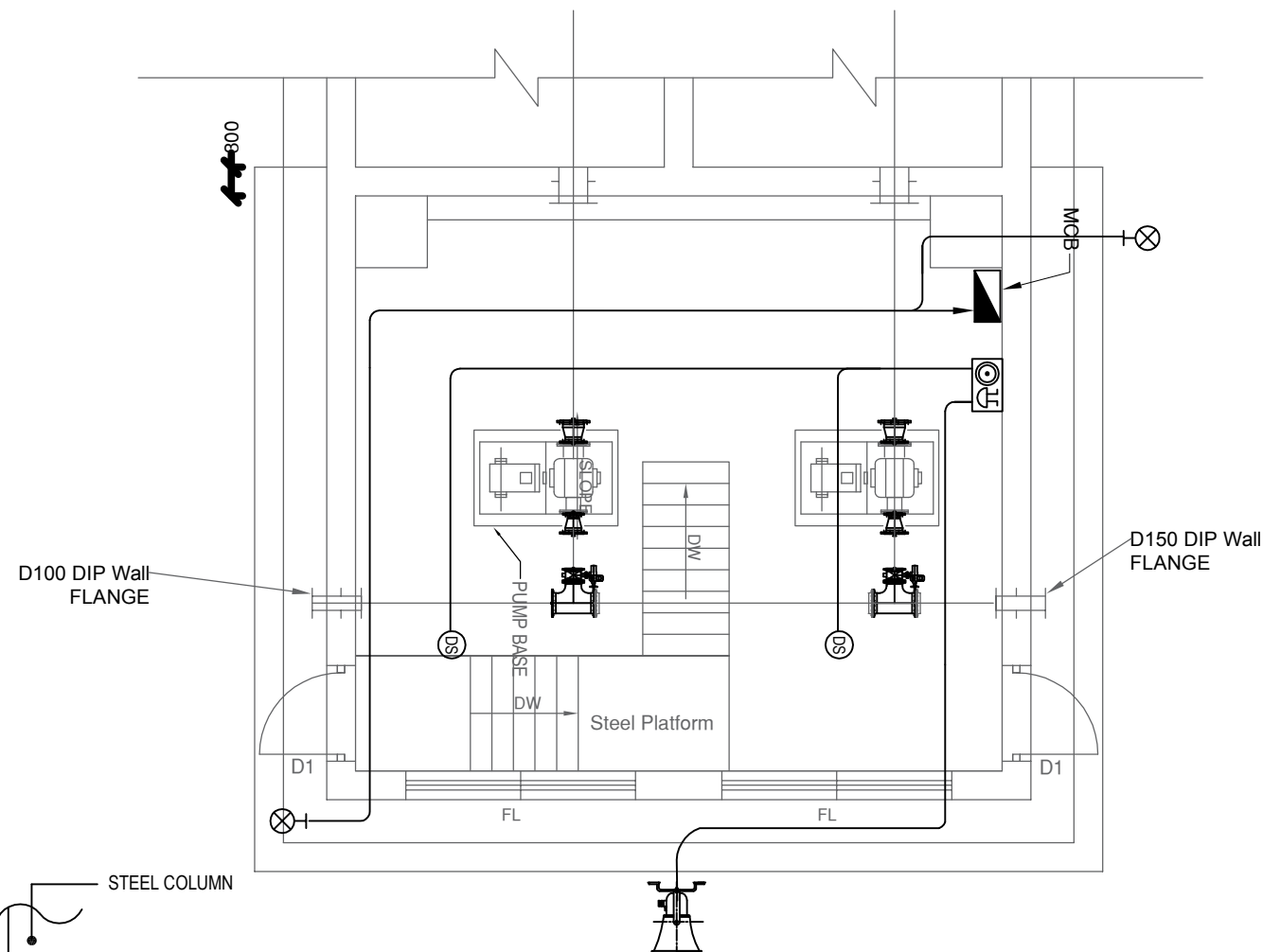


GREENTECH CONSULTANTS (Pvt.) Ltd IN ASSOCIATION WITH
DEVELOPMENT COLLABORATION PARTNERSHIP (Pvt.) Ltd MALDIVES
AND OPTIMUM SOLOUTIONS (Pvt) Ltd, MALDIVES


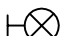




FIRE ALARMS FOR RO PLANT
KUDAHUVADHOO

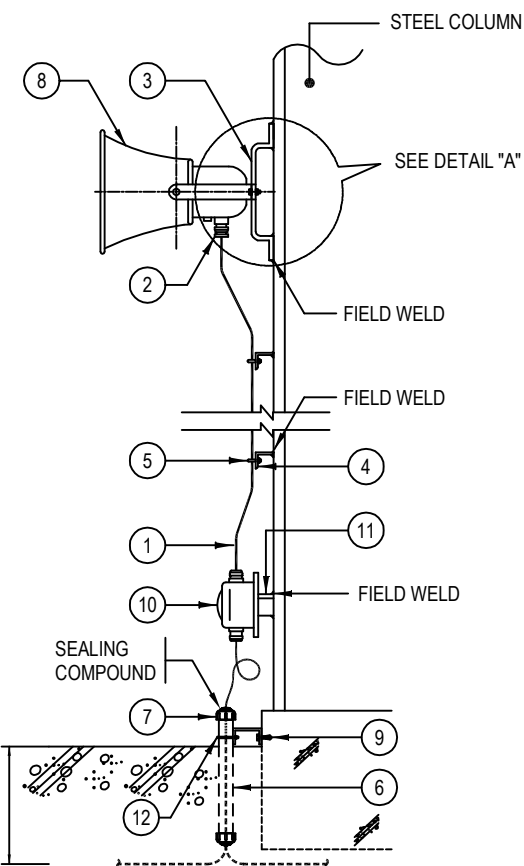
DATE

DRG.NO: KUDAHUVADHOO/FA/01
SCALE: NOT TO SCALE

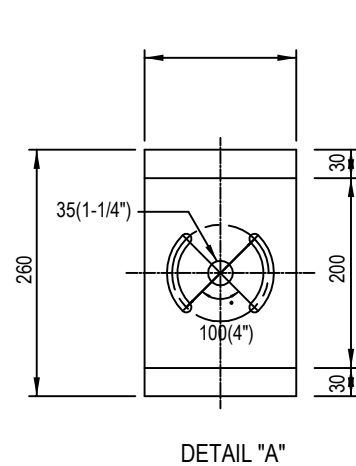


LEGEND

-  PHOTO-ELECTRIC SMOKE DETECTOR
-  EXIT LIGHT (SMALL SIZE, WALL MOUNTED YYPE)
-  BELL (NOT ASSOCIATED WITH FIRE ALARMS)
-  FIRE ALARM CALL POINTS
-  LIGHTING PANEL
-  FIRE ALARM MANUAL STATION (BELL & CALL POINT)



PLAN - PUMP HOUSE



MATERIAL LIST				
NO.	DESCRIPTION	UNIT	QTY	REMARK
1	LOCKNUT & BUSHING	EA		
2	OUTLET BOX & COVER	EA		
3	FLEXIBLE CONNECTOR	EA		
4	GUN STUD ANCHOR	EA		
5	CONDUIT	M		
6	"-1" ANGLE	M		
7	FLEXIBLE CONDUIT	M		
8	FLEXIBLE CONNECTOR	EA		
9	CEILING	EA		
10	FIRE DETECTOR	EA		
11	FIRE DETECTOR			
12	FIRE DETECTOR			

NOTE:
 1. ALL DIMENSION ARE IN MILLIMETERS AND ALL ELEVATIONS ARE METERS ABOVE MSL.
 2. THIS DRAWING SHALL BE READ IN CONJUNCTION WITH OTHER GENERAL DRAWINGS



CLIENT: MINISTRY OF ENVIRONMENT AND ENERGY

CONSULTANCY SERVICES FOR DESIGN OF WATER SUPPLY FACILITIES IN Ha.HORAFUSHI, Hdh.HANIMAADHOO,Sh.MILANDHOO,R.UNGOOFAARU,Lh.NAIFARU,Dh,KUDAHUVADHOO ,Th.GURAI DHOO AND Ga.VILLINGILI , MALDIVES

DESIGN
ENGINEER

DRAWN

CHECKED
DESIGN CHIEF

APPROVED

SL.NO
DRWING NO

DESCRIPTION

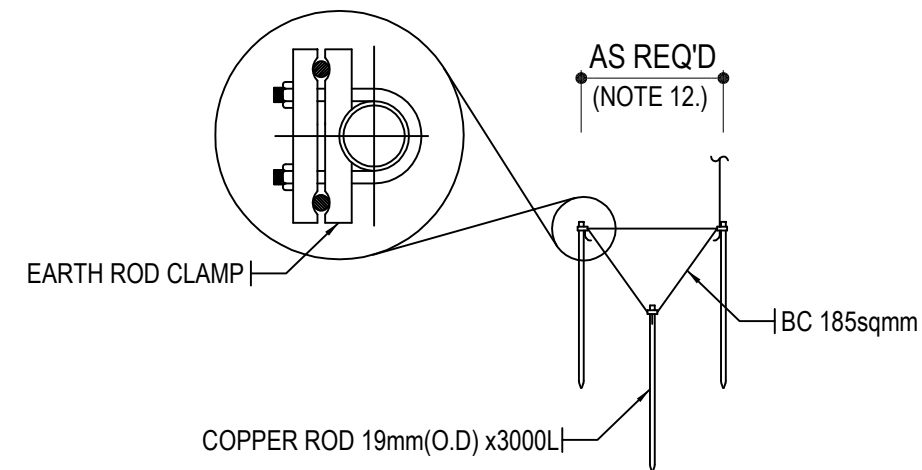
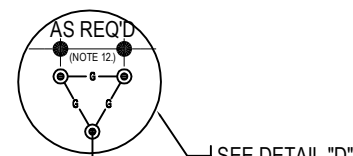
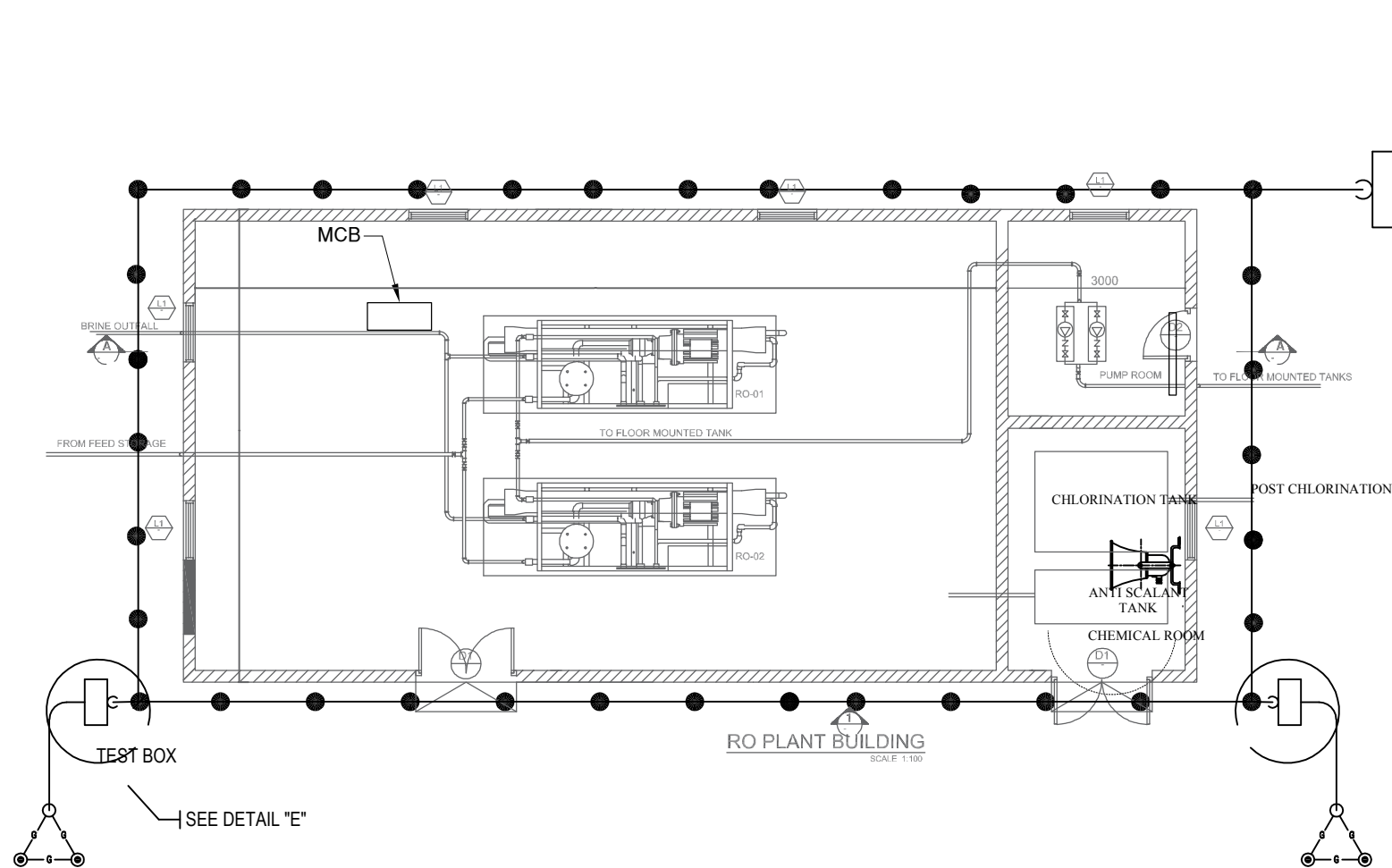


GREENTECH CONSULTANTS (Pvt.) Ltd IN ASSOCIATION WITH DEVELOPMENT COLLABORATION PARTNERSHIP (Pvt.) Ltd MALDIVES AND OPTIMUM SOLOUTIONS (Pvt) Ltd, MALDIVES

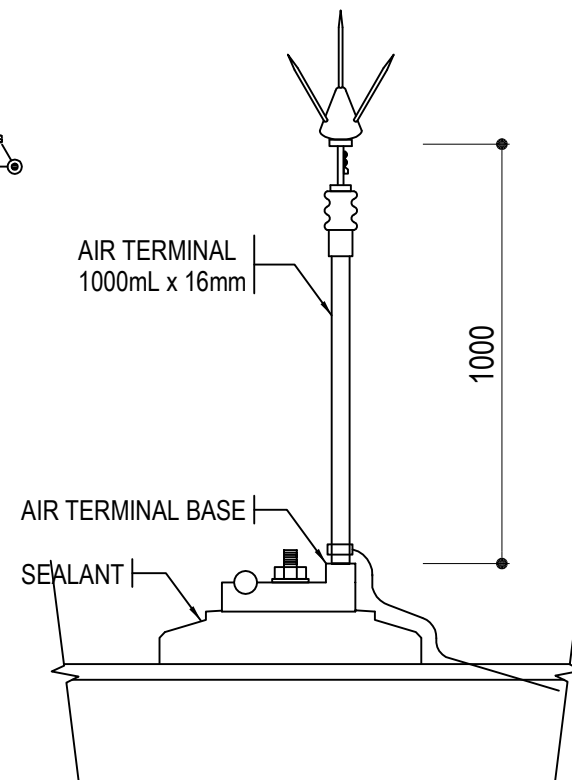
FIRE ALARMS FOR PUMP HOUSE
KUDAHUVADHOO

DATE

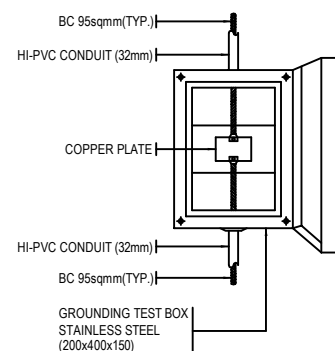
DRG.NO: KUDAHUVADHOO/FA/02
SCALE: NOT TO SCALE



DETAIL "D"



DETAIL "C"



DETAIL "E"
SCALE NONE

NOTE:
1. ALL DIMENSION ARE IN MILLIMETERS AND ALL ELEVATIONS ARE METERS ABOVE MSL.
2. THIS DRAWING SHALL BE READ IN CONJUNCTION WITH OTHER GENERAL DRAWINGS



CLIENT: MINISTRY OF ENVIRONMENT AND ENERGY

CONSULTANCY SERVICES FOR DESIGN OF WATER SUPPLY FACILITIES IN Ha.HORAFUSHI, Hdh.HANIMAADHOO,Sh.MILANDHOO,R.UNGOOFAARU,Lh.NAIFARU,Dh,KUDAHUVADHOO ,Th.GURAI DHOO AND Ga.VILLINGILI , MALDIVES

DESIGN
ENGINEER

DRAWN

CHECKED
DESIGN CHIEF

APPROVED

SL.NO
DRWING NO

DESCRIPTION

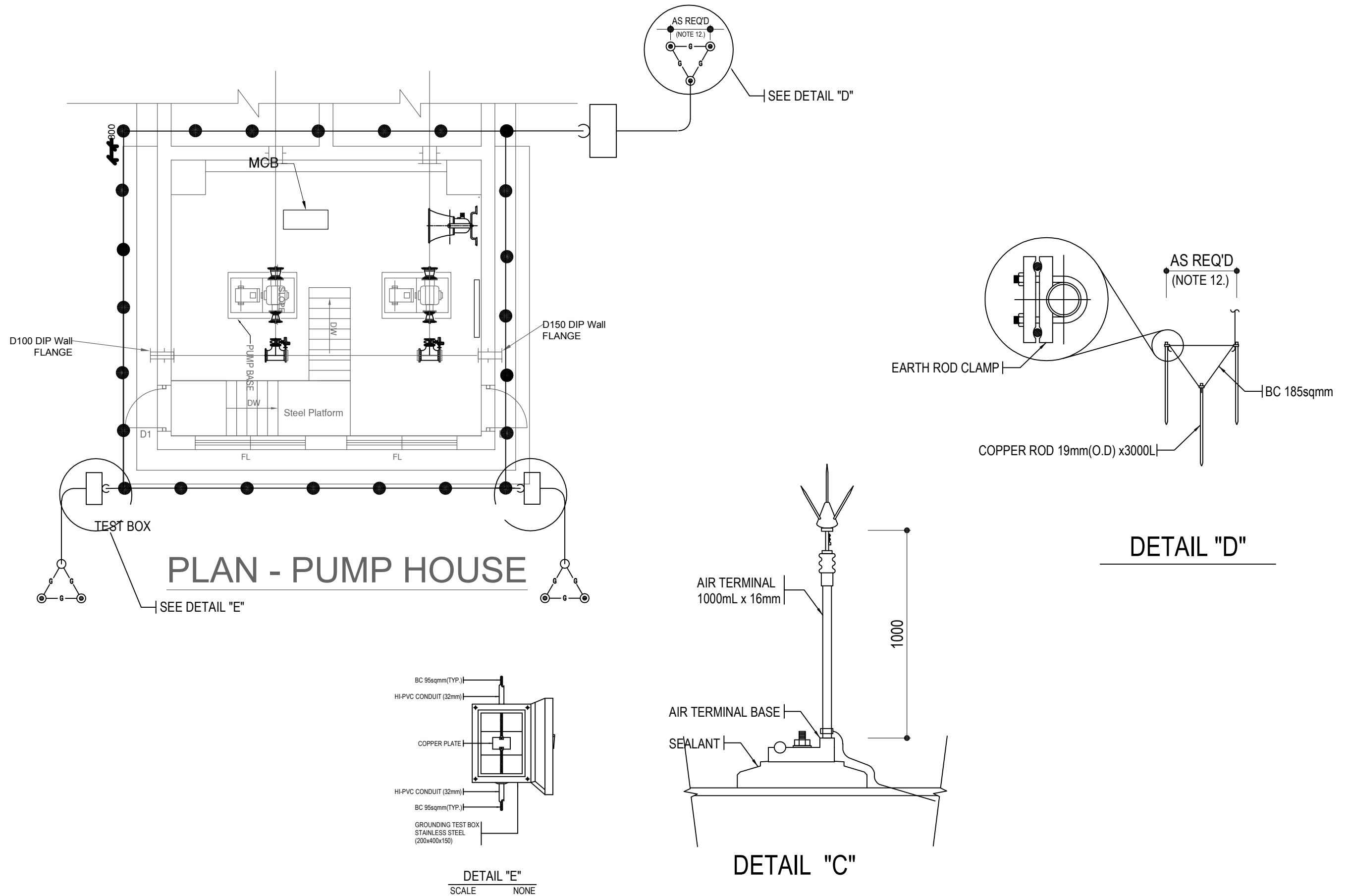


GREENTECH CONSULTANTS (Pvt.) Ltd IN ASSOCIATION WITH DEVELOPMENT COLLABORATION PARTNERSHIP (Pvt.) Ltd MALDIVES AND OPTIMUM SOLOUTIONS (Pvt) Ltd, MALDIVES

LIGHTENING CONDUCTOR

DATE

DRG.NO: KUDAHUVADHOO/FA/03
SCALE: NOT TO SCALE



NOTE:
 1. ALL DIMENSION ARE IN MILLIMETERS AND ALL ELEVATIONS ARE METERS ABOVE MSL.
 2. THIS DRAWING SHALL BE READ IN CONJUNCTION WITH OTHER GENERAL DRAWINGS



CLIENT: MINISTRY OF ENVIRONMENT AND ENERGY

CONSULTANCY SERVICES FOR DESIGN OF WATER SUPPLY FACILITIES IN Ha.HORAFUSHI, Hdh.HANIMAADHOO,Sh.MILANDHOO,R.UNGOOFAARU,Lh.NAIFARU,Dh,KUDAHUVADHOO, Th.GURaidhoo AND Ga.VILLINGILI , MALDIVES

DESIGN
ENGINEER

DRAWN

CHECKED
DESIGN CHIEF

APPROVED

SL.NO
DRWING NO

DESCRIPTION

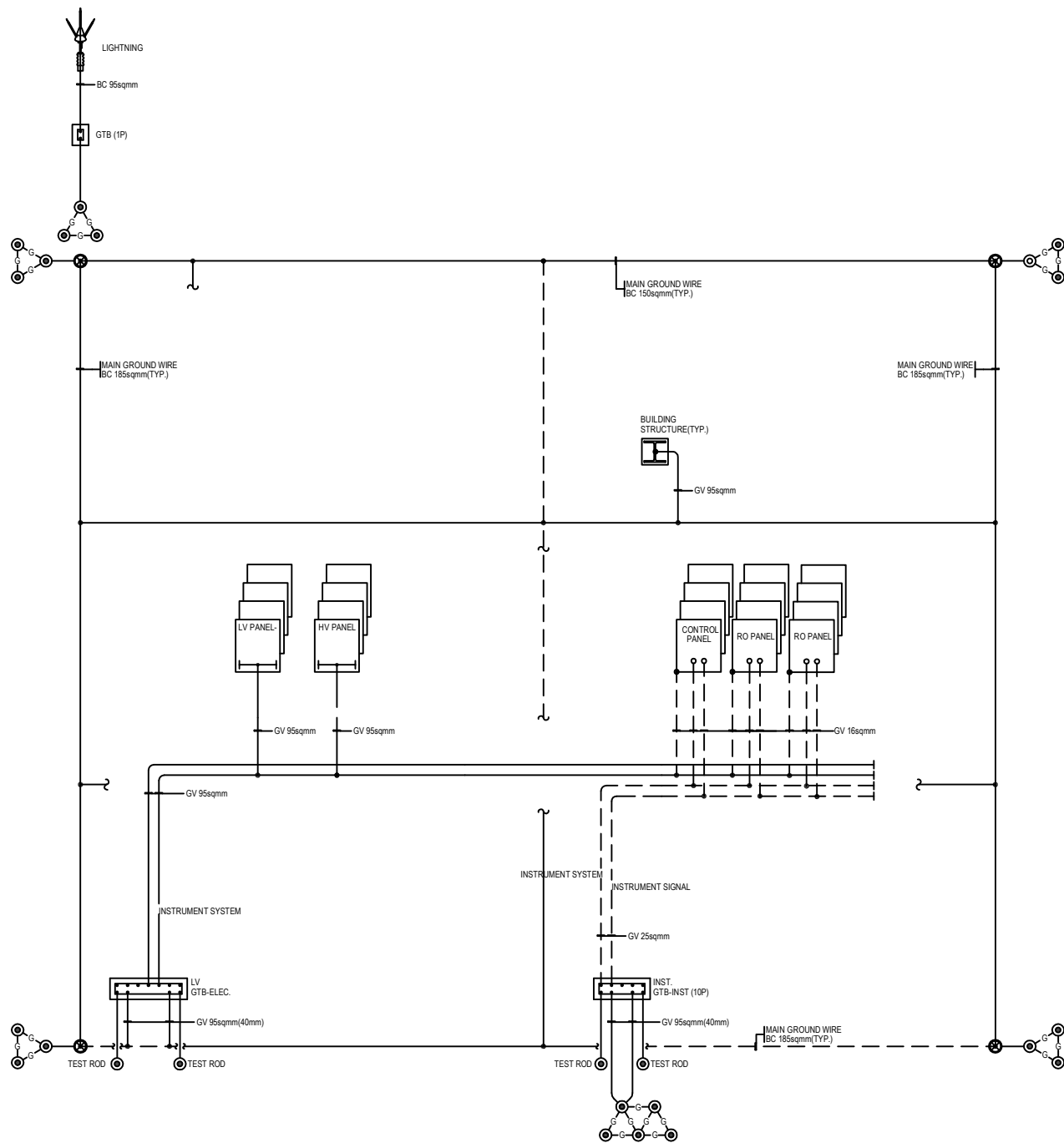


GREENTECH CONSULTANTS (Pvt.) Ltd IN ASSOCIATION WITH DEVELOPMENT COLLABORATION PARTNERSHIP (Pvt.) Ltd MALDIVES AND OPTIMUM SOLOUTIONS (Pvt) Ltd, MALDIVES

LIGHTENING CONDUCTOR
KUDAHUVADHOO

DATE

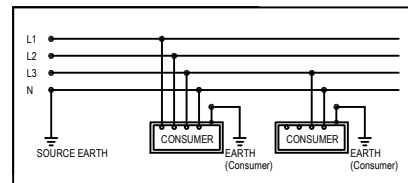
DRG.NO: KUDAHUVADHOO/FA/04
SCALE: NOT TO SCALE



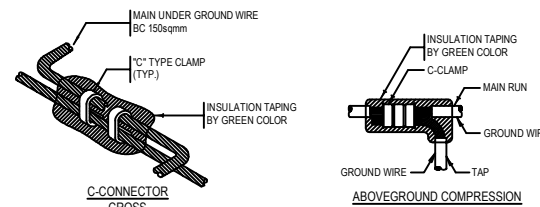
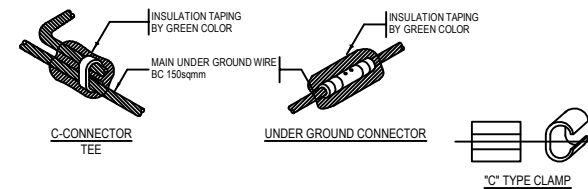
GROUNDING & LIGHTNING FOR BLOCK DIAGRAM

NOTES

1. MAIN GROUNDING LOOP : BC 150sqmm
2. TAP TO ELECTRICAL EQUIPMENT IN SUNSTATIONS AS SWITCHGEAR : LV : GV 95sqmm
3. TAP TO MOTOR
- LOW VOLTAGE MOTOR
UP TO 11kW : 10sqmm(25mm)
UP TO 22kW : 16sqmm(25mm)
UP TO 40kW : 35sqmm(25mm)
UP TO 70kW : 70sqmm(32mm)
UP TO 120kW : 95sqmm(32mm)
4. TAP TO TRANSFORMER NEUTRAL : GV 95sqmm(32mm)
5. TAP TO POWER & LIGHTING PANEL : GV 25sqmm(25mm)
6. TAP TO LOCAL CONTROL PANEL : GV 25sqmm(25mm)
7. TAP TO WELDING RECEPTACLE PANEL : GV 25sqmm(25mm)
8. TAP TO PUSH-BUTTON STATION : GV 6sqmm(25mm)
9. TAP TO BUILDING STRUCTURE : GV 95sqmm(32mm)
10. TAP TO PROCESS EQUIPMENT FOR STATIC GROUNDING : GV 25sqmm(25mm)
11. TAP TO CABLE TRAY BONDING
BRANCH EARTHING WIRE BE TAPPED FROM MAIN EARTHING WIRE WITH THE INTERVAL OF 20M MAX. BY GV 35sqmm SO AS TO UNIFY TO POWER STATION.
12. CONSTRUCTION COMPANY SHALL ENSURE COMPLIANCE WITH LOCAL REGULATION, (EVEN THOUGH THE DRAWINGS WERE ACCEPTED.)

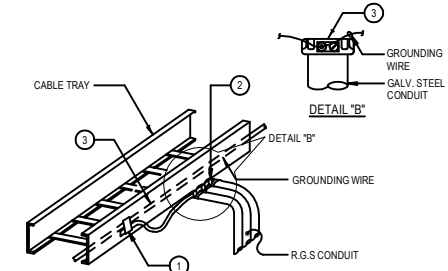


"TT NETWORK SYSTEM GROUNDING



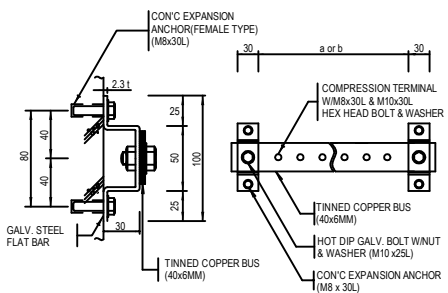
DETAIL - G01
CADDWELD GROUNDING CONNECTION

MATERIAL LIST				
ITEM NO.	DESCRIPTION	UNIT	QTY	REMARK
1	COMPRESSION SLEEVE (C-TYPE)	EA	1	
2	GROUNDING BUSHING	EA	1	
3	GROUNDING WIRE	M	-	



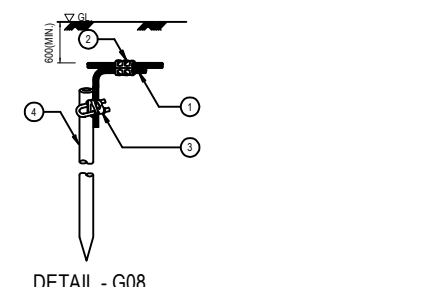
DETAIL - G06
CABLE TRAY

*a : 500mm (SCCT)
*b : 1000mm (10CCT)



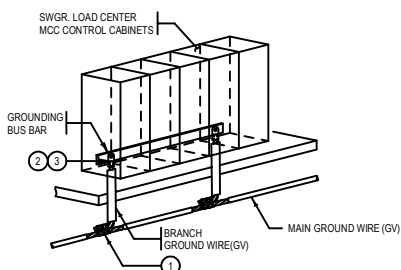
DETAIL - G10
EARTHING TERMINAL

MATERIAL LIST				
ITEM NO.	DESCRIPTION	UNIT	QTY	REMARK
1	GV WIRE	M	-	
2	CONNECTOR CLAMP (CABLE TO ROD)	EA	1	
3	CONNECTOR CLAMP (19x3000mm LONG)	EA	1	
4	GROUNDING ROD (19x3000mm LONG)	EA	1	



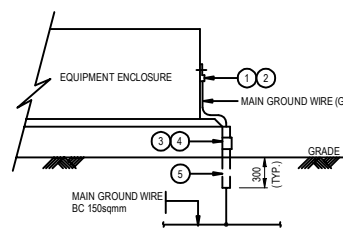
DETAIL - G08

MATERIAL LIST				
ITEM NO.	DESCRIPTION	UNIT	QTY	REMARK
1	COMPRESSION SLEEVE (C-TYPE)	EA	1	
2	COMPRESSION TERMINAL LUG	EA	1	
3	BOLT & NUT W/FLAT & SPRING WASHER(M12)	EA	1	



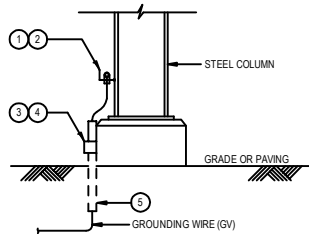
DETAIL - G02

MATERIAL LIST				
ITEM NO.	DESCRIPTION	UNIT	QTY	REMARK
1	COMPRESSION TERMINAL LUG	EA	1	
2	HEX HEAD BOLT & NUT W/FLAT & SPRING WASHER(M10)	EA	1	
3	1 HOLE CLAMP FOR 22	EA	1	
4	EXPANSION BOLT M6x50L	EA	1	
5	PVC CONDUIT 22	M	0.6	



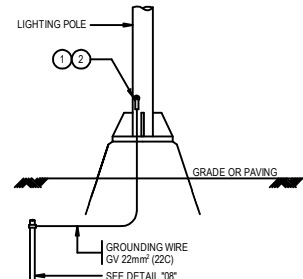
DETAIL - G03

MATERIAL LIST				
ITEM NO.	DESCRIPTION	UNIT	QTY	REMARK
1	GROUNDING PIECE	EA	1	
2	COMPRESSION TERMINAL LUG	EA	1	
3	1 HOLE CLAMP FOR 22	EA	1	
4	EXPANSION BOLT M6x50L	EA	1	
5	PVC CONDUIT 22	M	0.6	



DETAIL - G04

MATERIAL LIST				
ITEM NO.	DESCRIPTION	UNIT	QTY	REMARK
1	COMPRESSION TERMINAL LUG	EA	1	
2	HEX HEAD BOLT & NUT W/FLAT & SPRING WASHER(M10)	EA	1	



DETAIL - G07



CLIENT: MINISTRY OF ENVIRONMENT AND ENERGY

CONSULTANCY SERVICES FOR DESIGN OF WATER SUPPLY FACILITIES IN Ha.HORAFUSHI, Hdh.HANIMAADHOO,Sh.MILANDHOO,R.UNGOOFAARU,Lh.NAIFARU,Dh.KUDAHUVADHOO, Th.GURAI DHOO AND Ga.VILLINGILI , MALDIVES

DESIGN ENGINEER

DRAWN

CHECKED DESIGN CHIEF

APPROVED

SL.NO

DRWING NO

DESCRIPTION



GREENTECH CONSULTANTS (Pvt.) Ltd IN ASSOCIATION WITH DEVELOPMENT COLLABORATION PARTNERSHIP (Pvt.) Ltd MALDIVES AND OPTIMUM SOLOUTIONS (Pvt) Ltd, MALDIVES

LIGHTENING CONDUCTOR

DATE

DRG.NO: KUDAHUVADHOO/FA/05

SCALE: NOT TO SCALE