



H

# HITHADHOO DV SHELTER

Concept Masterplan  
16<sup>th</sup> May 2022





# Site Understanding and Design Approach

- Analysing the Site and Developing Planning Strategies



# Context

- The site is centrally located towards North-western part of the island.
- The island is predominantly residential with access to few recreational and commercial facilities.

## LEGEND

- Site
- Hithadhoo Fire Station
- Villa College Hithadhoo Campus
- Hithadhoo Post Office

\* All information (other than site location) is as per data gathered through online sources





# Site Context





Fairly regular site profile

Three side access road

Similar programme associated in the Southern part of site

Main streets adjacent to the site

Close proximity to the Youth Center  
(Noise and privacy concern)

Unable to include related facilities within the block

**Legend**

- 1. Residential
- 2. Residential
- 3. Residential
- 4. Nat Drug Agency
- 5. Accommodation (Nat Drug Agency)
- 6. Family and Child Services (FCSC)
- 7. Women Development Council (WDC)
- 8. Guard Post
- 9. Youth Center





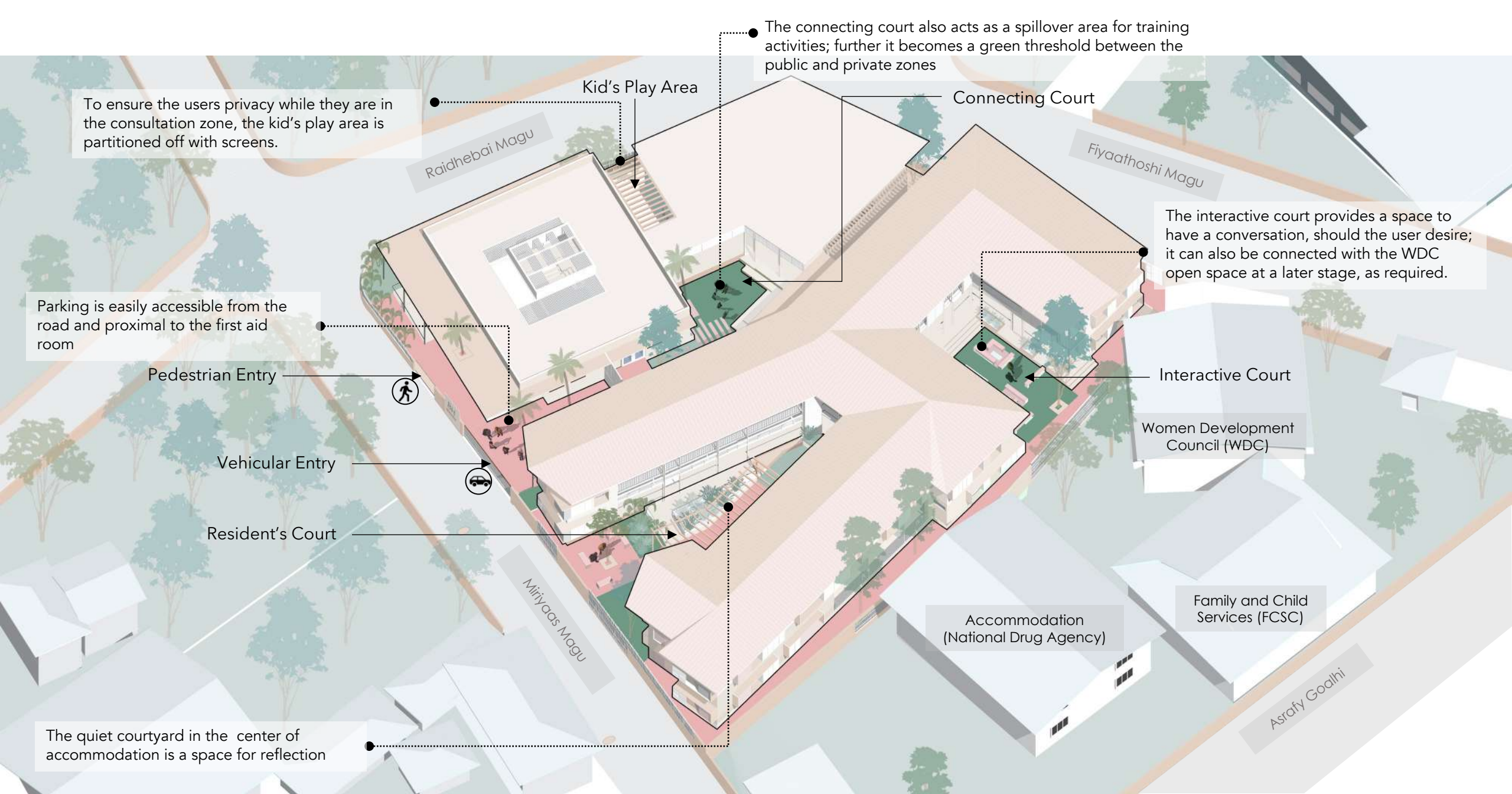
# Concept Master Plan

- Understanding the Master Plan, Key Areas and Activities, and User's Journey through the Facility



# Concept Master Plan





To ensure the users privacy while they are in the consultation zone, the kid's play area is partitioned off with screens.

Parking is easily accessible from the road and proximal to the first aid room

Pedestrian Entry

Vehicular Entry

Resident's Court

The quiet courtyard in the center of accommodation is a space for reflection

Kid's Play Area

The connecting court also acts as a spillover area for training activities; further it becomes a green threshold between the public and private zones

Connecting Court

The interactive court provides a space to have a conversation, should the user desire; it can also be connected with the WDC open space at a later stage, as required.

Interactive Court

Women Development Council (WDC)

Accommodation (National Drug Agency)

Family and Child Services (FCSC)

Asrafy Goalhi

Miriyaas Magu

Raidhebai Magu

Fiyathoshi Magu



# Building Plan

- Detailed Floor Plans



# Ground Floor Plan



## LEGEND

- 1 Security Cabin
- 2 Entry Foyer
- 3 First Aid
- 4 Waiting Area and Reception
- 5 Manager's Room and Toilet
- 6 Prayer Room
- 7 Legal Aid Room
- 8 Counselling Room
- 9 Common Toilet-1- UA
- 10 Nursery, Breast feeding room and Kid's wash area
- 11 Vocational Training
- 12 Computer Room
- 13 Common Toilets- 2
- 14 Multipurpose Hall
- 15 Library
- 16 Dining, Handwash and Toilet
- 17 Kitchen, Pantry and Utility
- 18 Laundry Room
- 19 Lounge
- 20 Flexible Occupancy Units
- 21 Single Occupancy Units
- 22 Universally Accessible Accommodation Units



# First Floor Plan



## LEGEND

- 20 Flexible Occupancy Units
- 21 Single Occupancy Units
- 23 Family Units
- 24 Spare Room
- 25 Office With Video Conference
- 26 Staff Meeting Room
- 27 Maintenance Staff Room, Rest area, Lockers and Toilet
- 28 Storage
- 29 Office Staff Room, Utility, Lockers and Toilets
- 30 Record Room



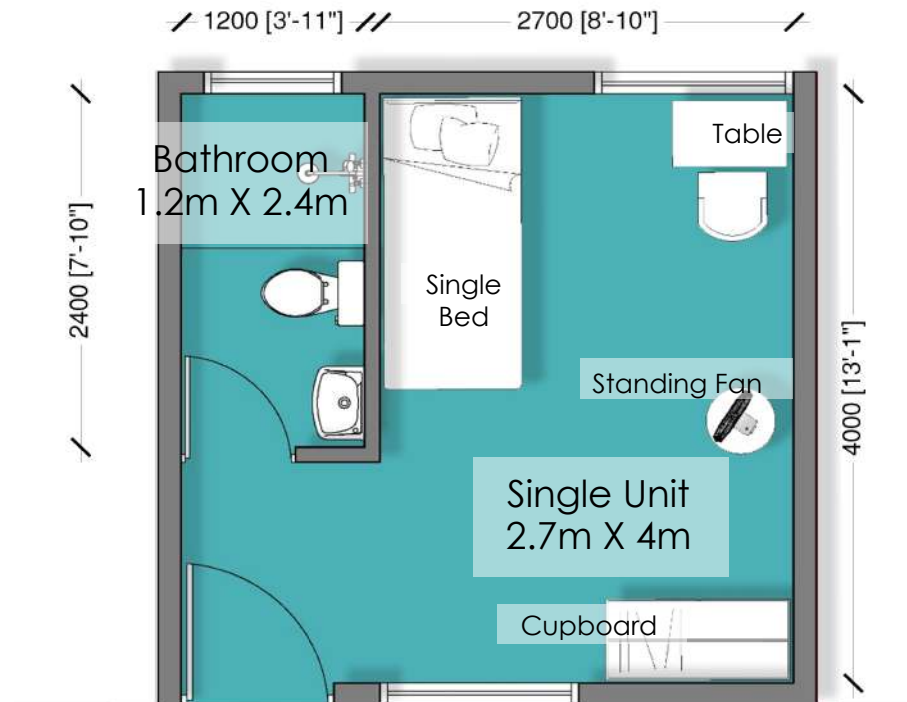
# Accommodation Unit Design

- Accommodation Units Layouts and Details

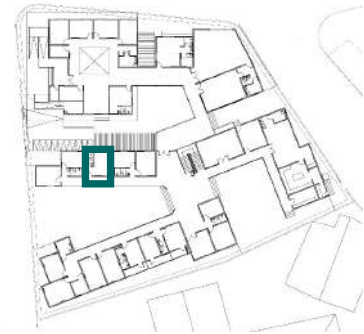


# Single Occupancy Unit 1

Unit Area: 12.90 Sqm/ 138.85 Sqft  
Bathroom Area: 2.95 Sqm/ 31.75 Sqft

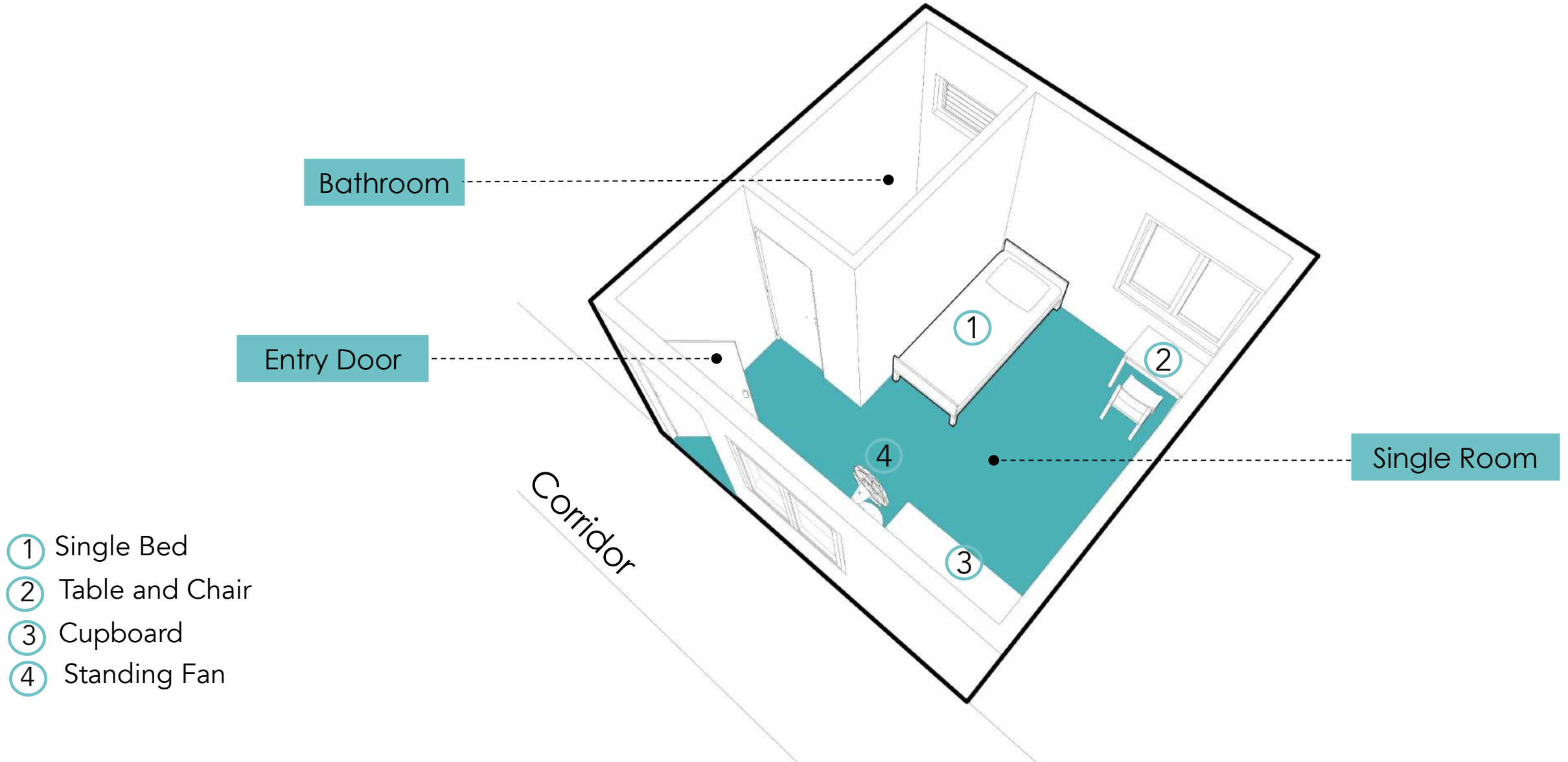


Corridor





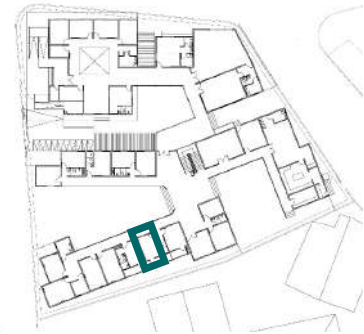
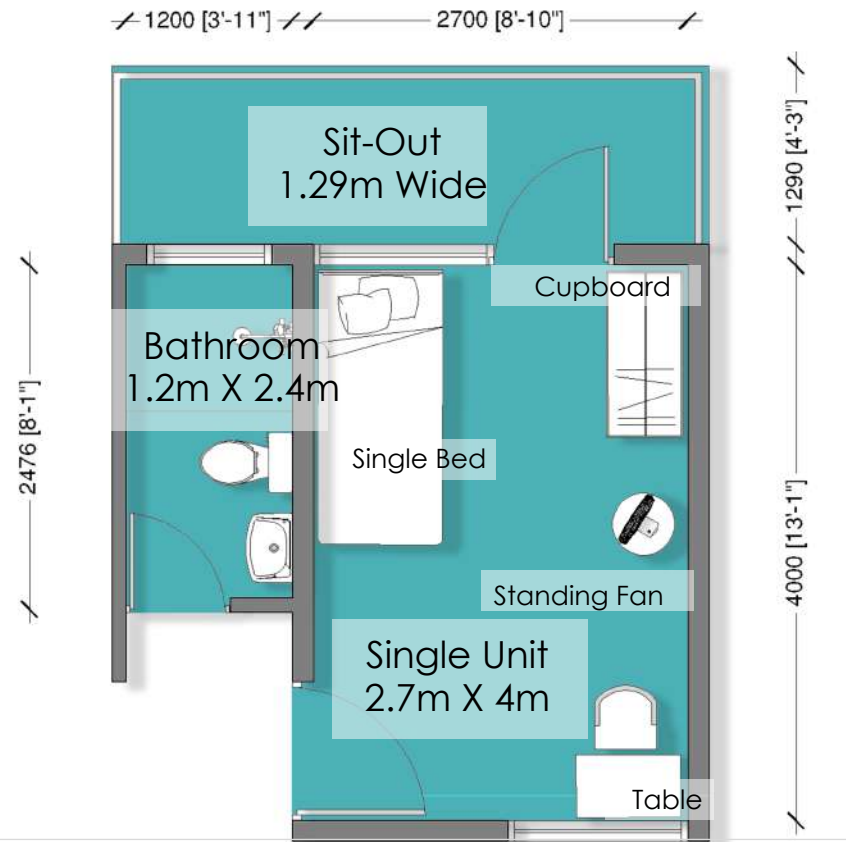
# Single Occupancy Unit 1





# Multi Occupancy Unit 4- Single Room

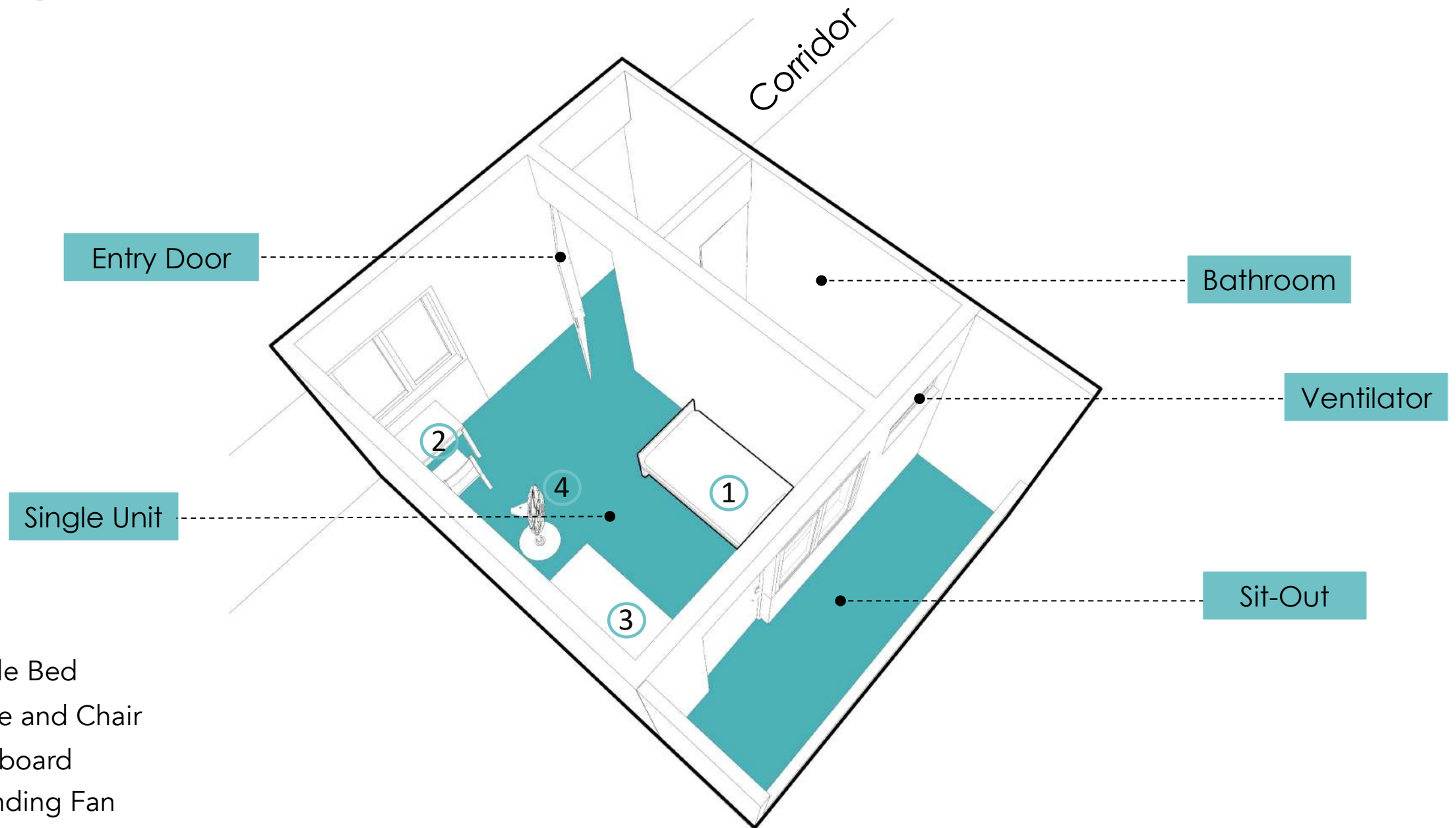
Unit Area: 11.10 Sqm/ 119.47 Sqft  
Bathroom Area: 2.95 Sqm/ 31.75 Sqft  
Sit-Out: 3.55 Sqm/ 38.21 Sqft



Corridor



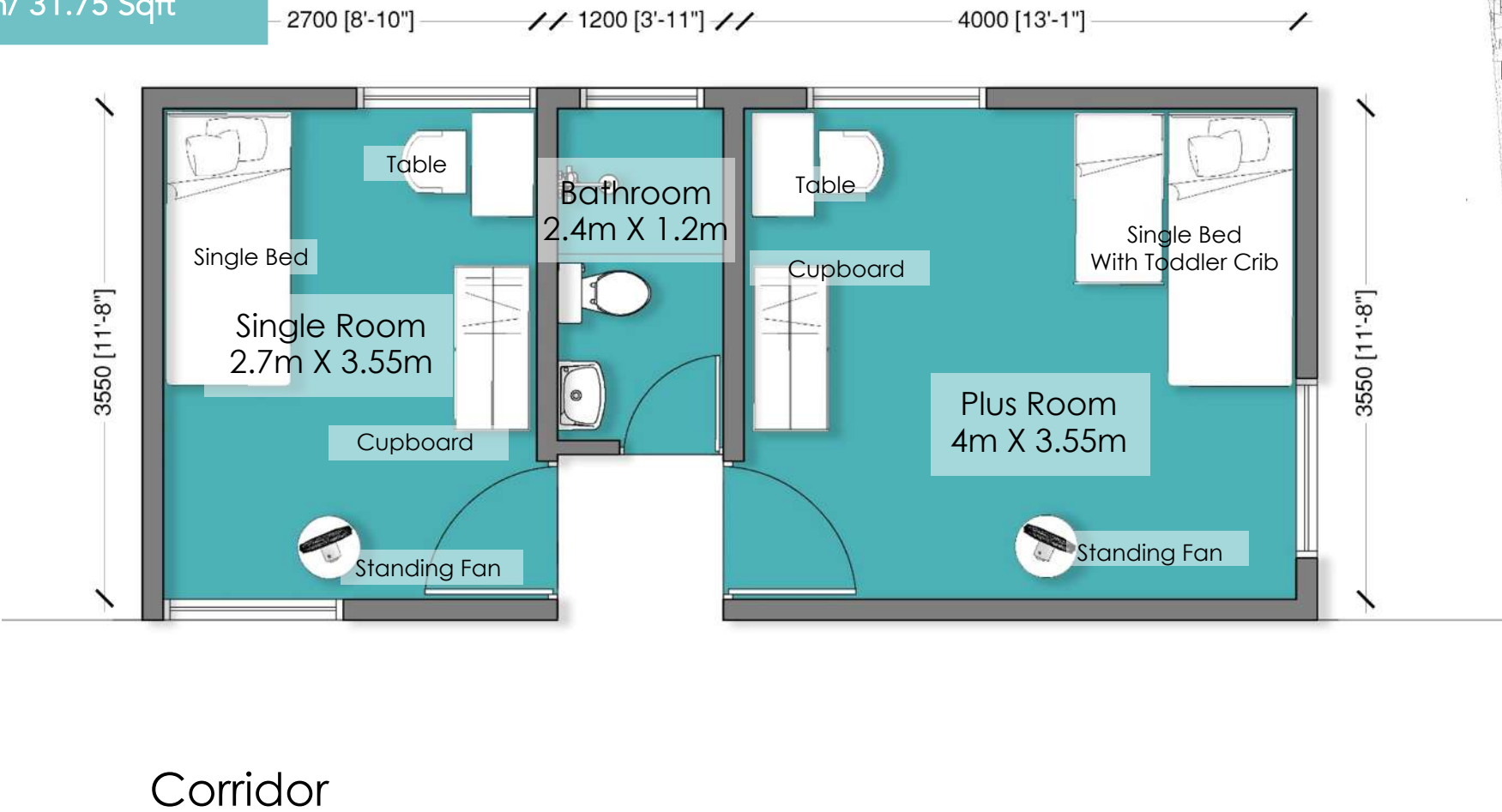
# Multi Occupancy Unit 4- Single Room



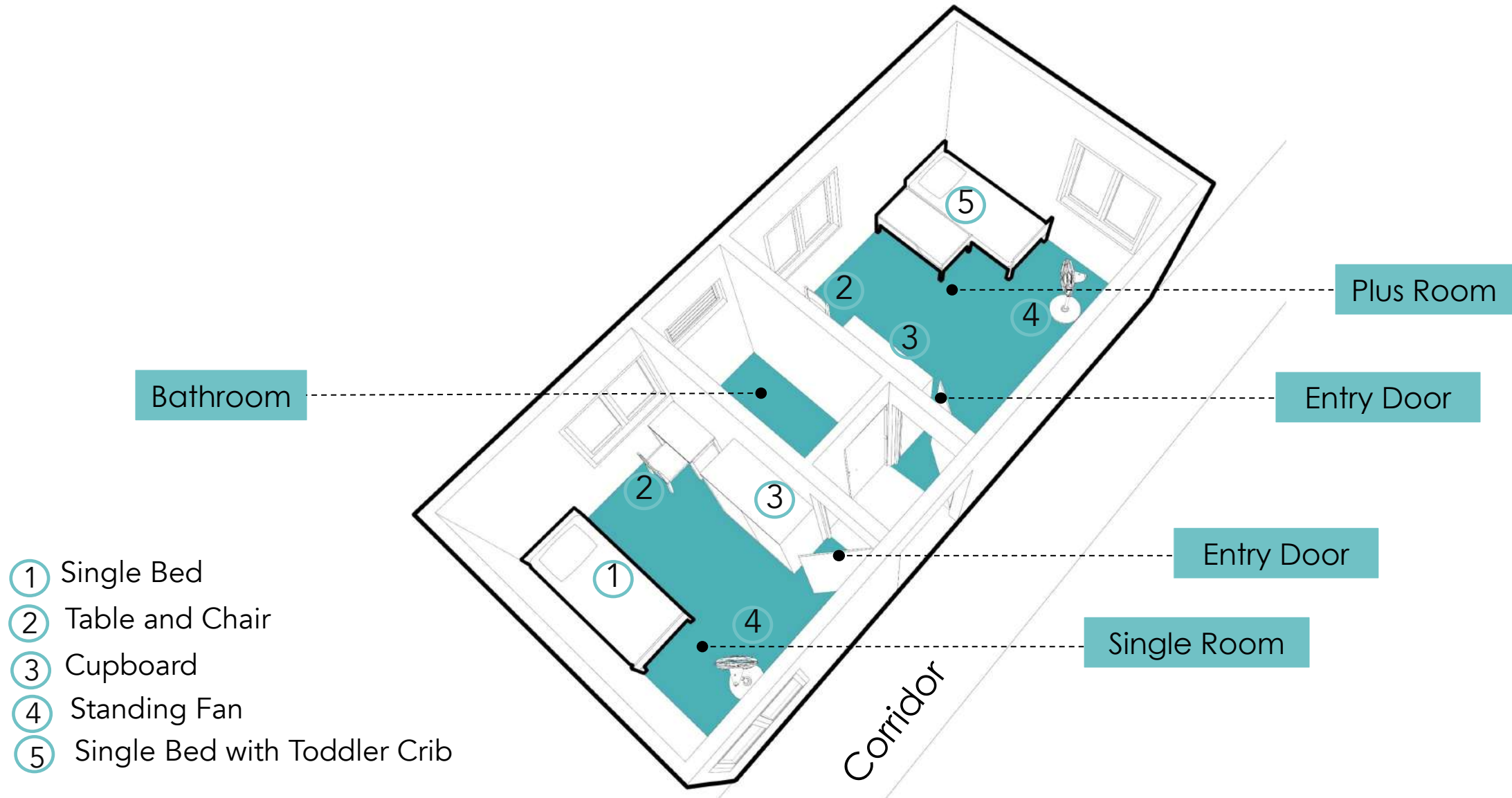


# Multi Occupancy Unit 3

Single Room Area: 9.74 Sqm/ 104.84 Sqft  
Plus Room Area: 14.30 Sqm/ 153.9 Sqft  
Bathroom Area: 2.95 Sqm/ 31.75 Sqft



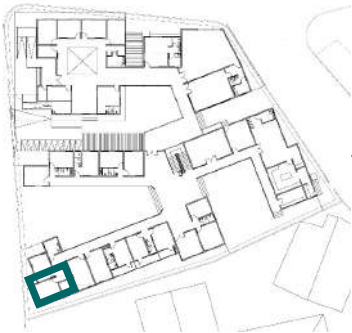
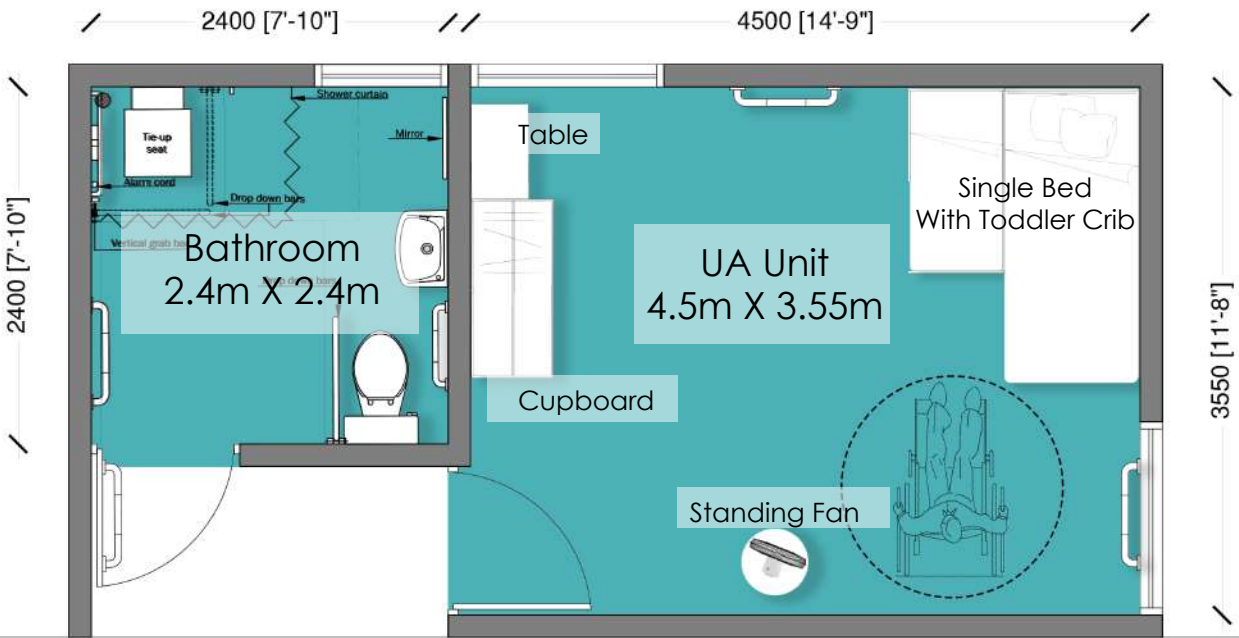
# Multi Occupancy Unit 3





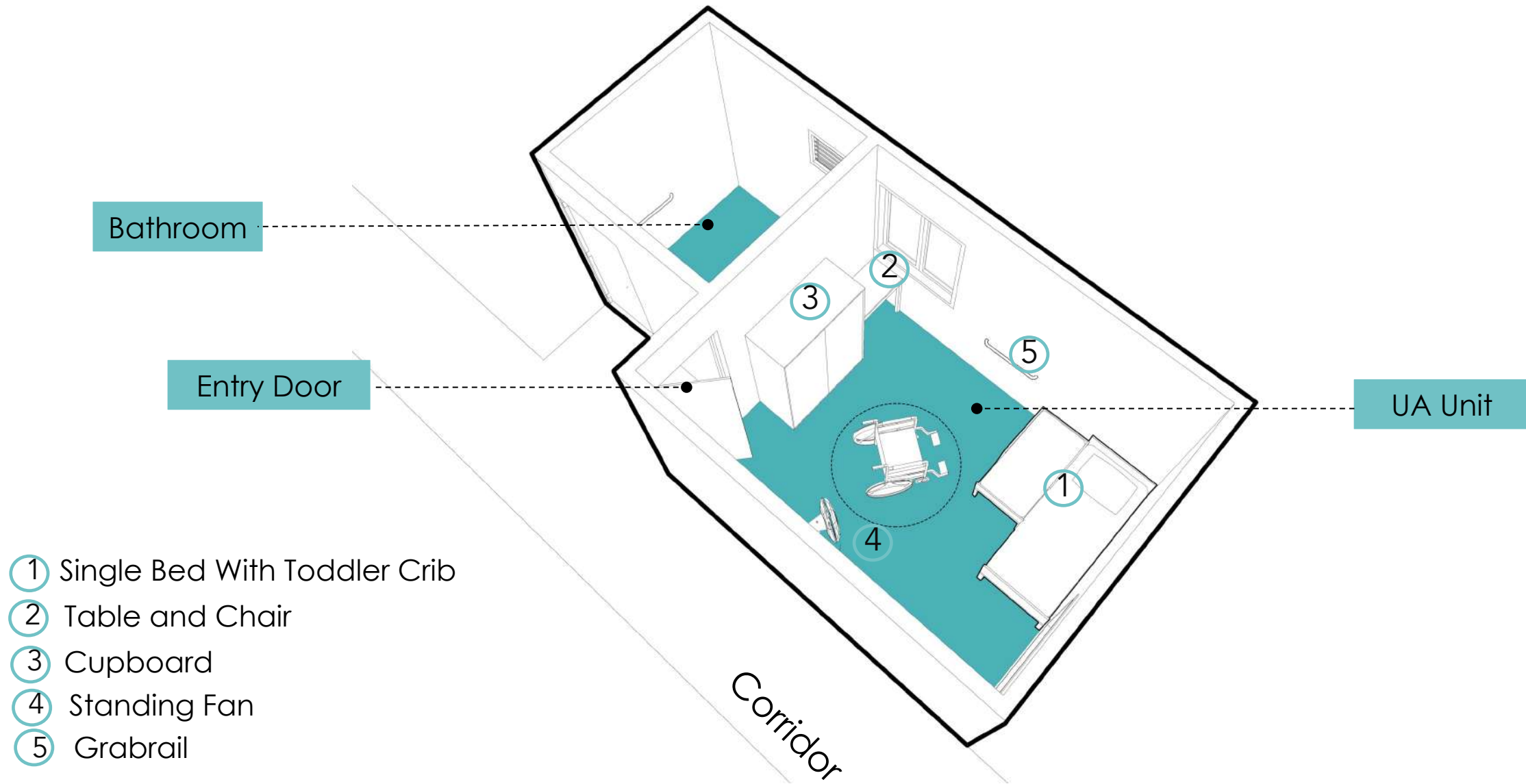
# Universally Accessible (UA) Unit-3

Unit Area: 16.12 Sqm/ 173.51 Sqft  
Bathroom Area: 5.90 Sqm/ 63.50 Sqft



Corridor

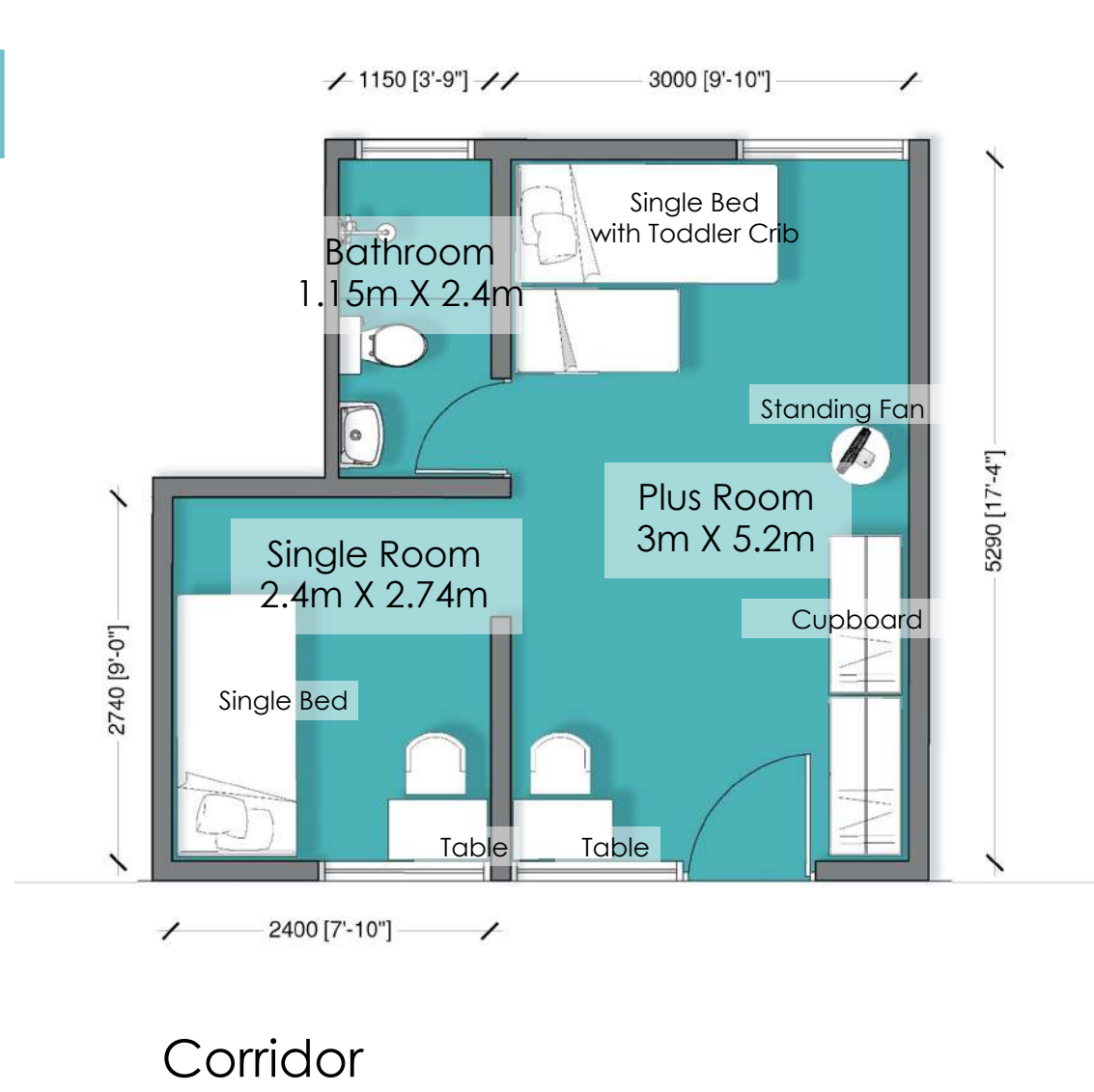
# Universally Accessible Unit-3



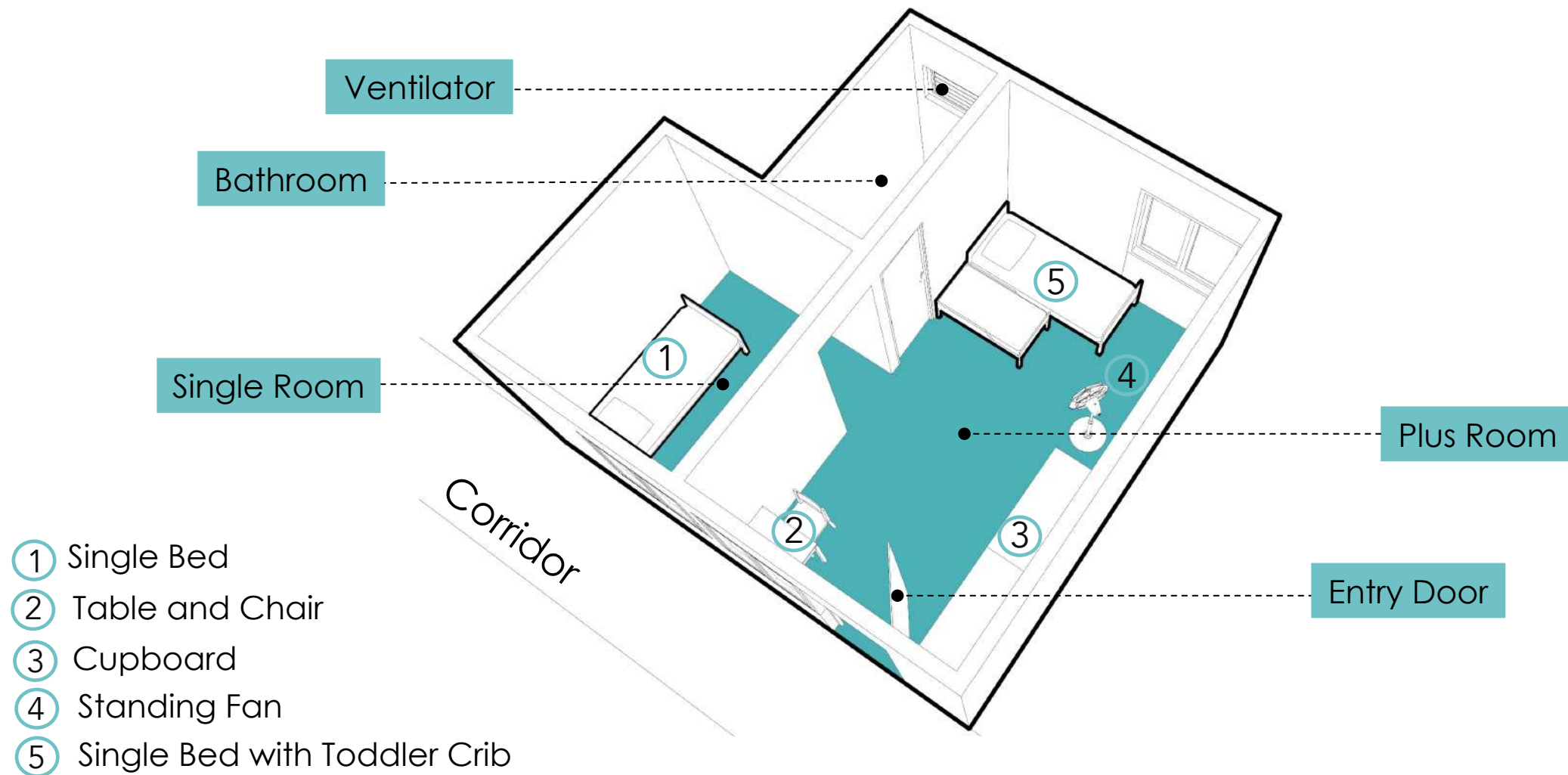


# Family Unit 1

Total Room Area: 22.73 Sqm/ 244.66Sqft  
Bathroom Area: 2.76 Sqm/ 29.7 Sqft



# Family Unit 1



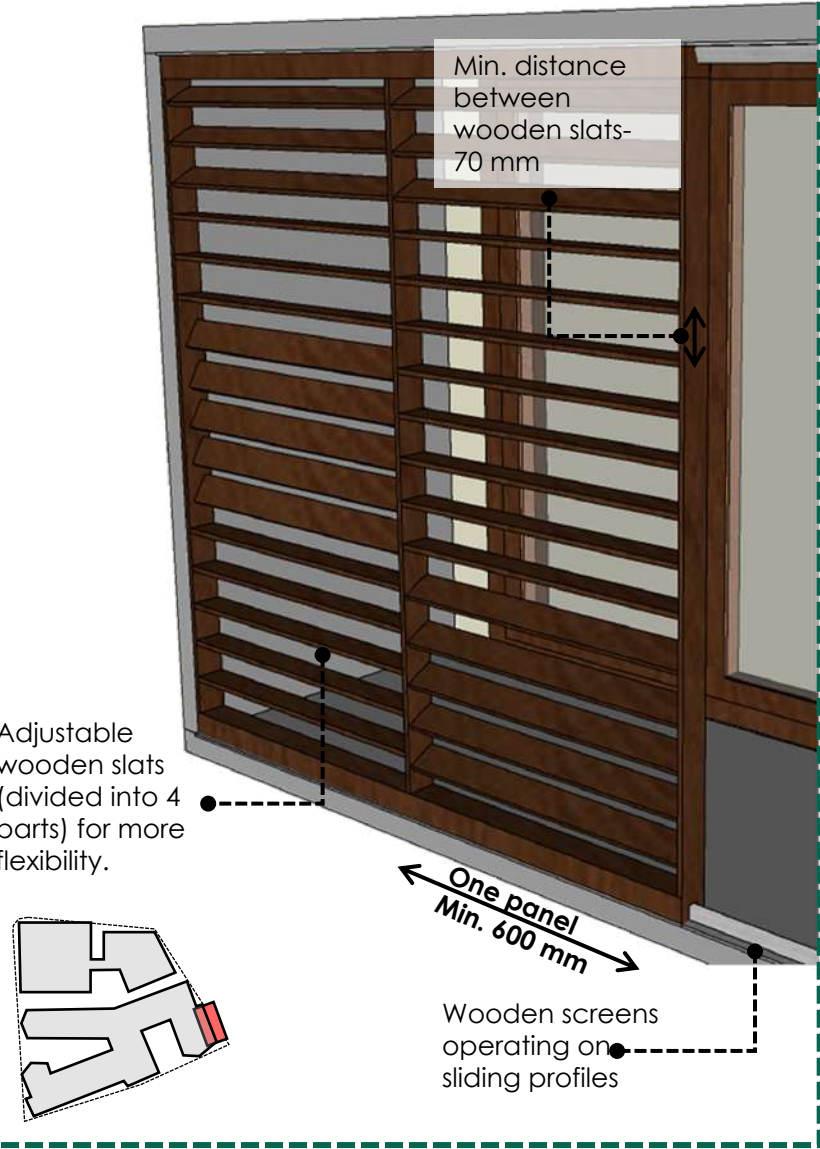


# Window details

- Window details as per CFD and Energy considerations

# Window Details Sample (E-W Side)

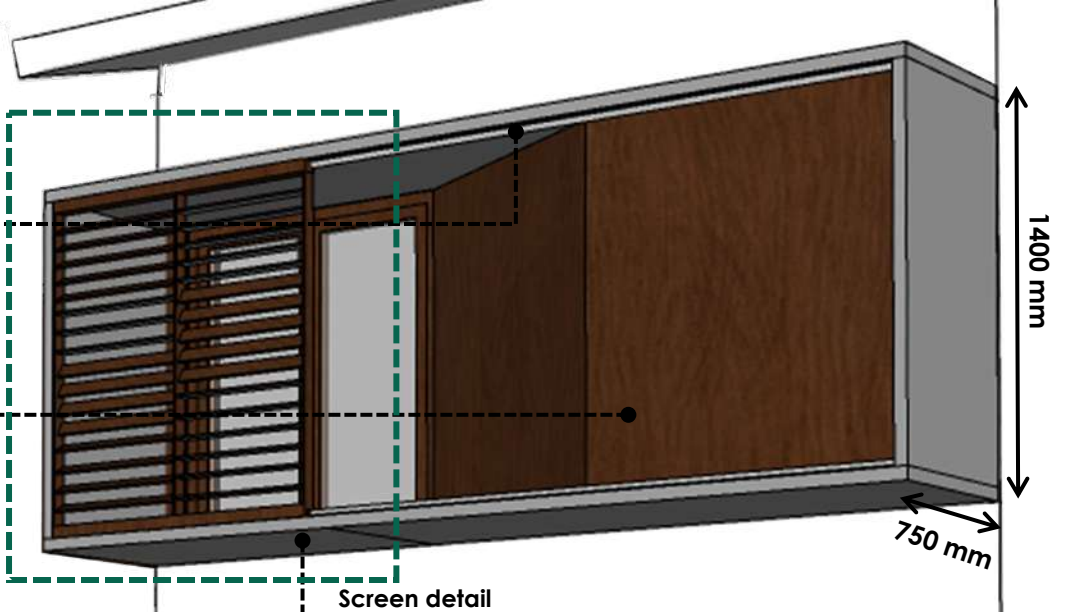
## Screen detail



150 mm gap between wooden box and outer edge of window box to allow window panes to open with screen in front.

Angular hollow wooden box for visual aesthetic

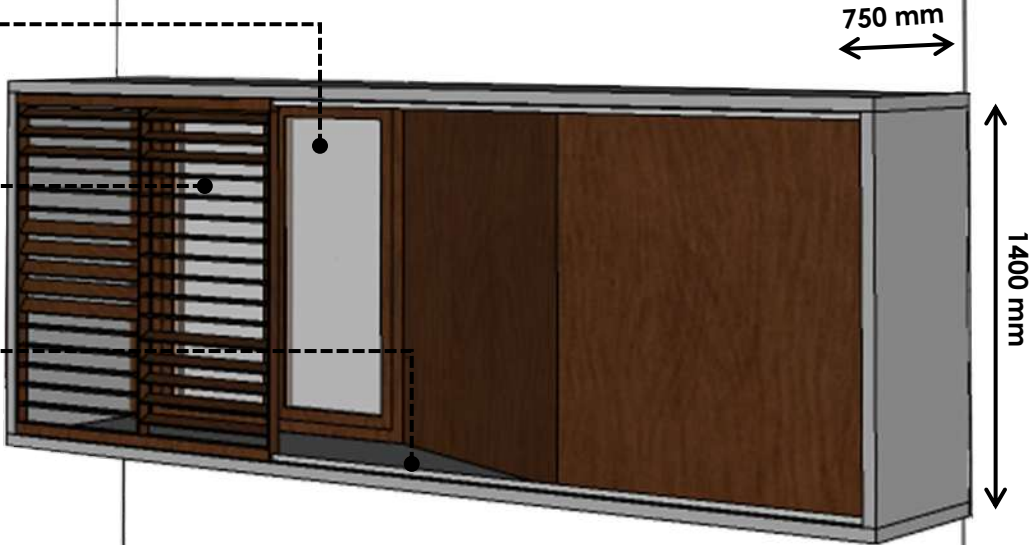
Extended Aluminium window box



Openable glass panes

Sliding wooden screen for privacy and improved indoor environment

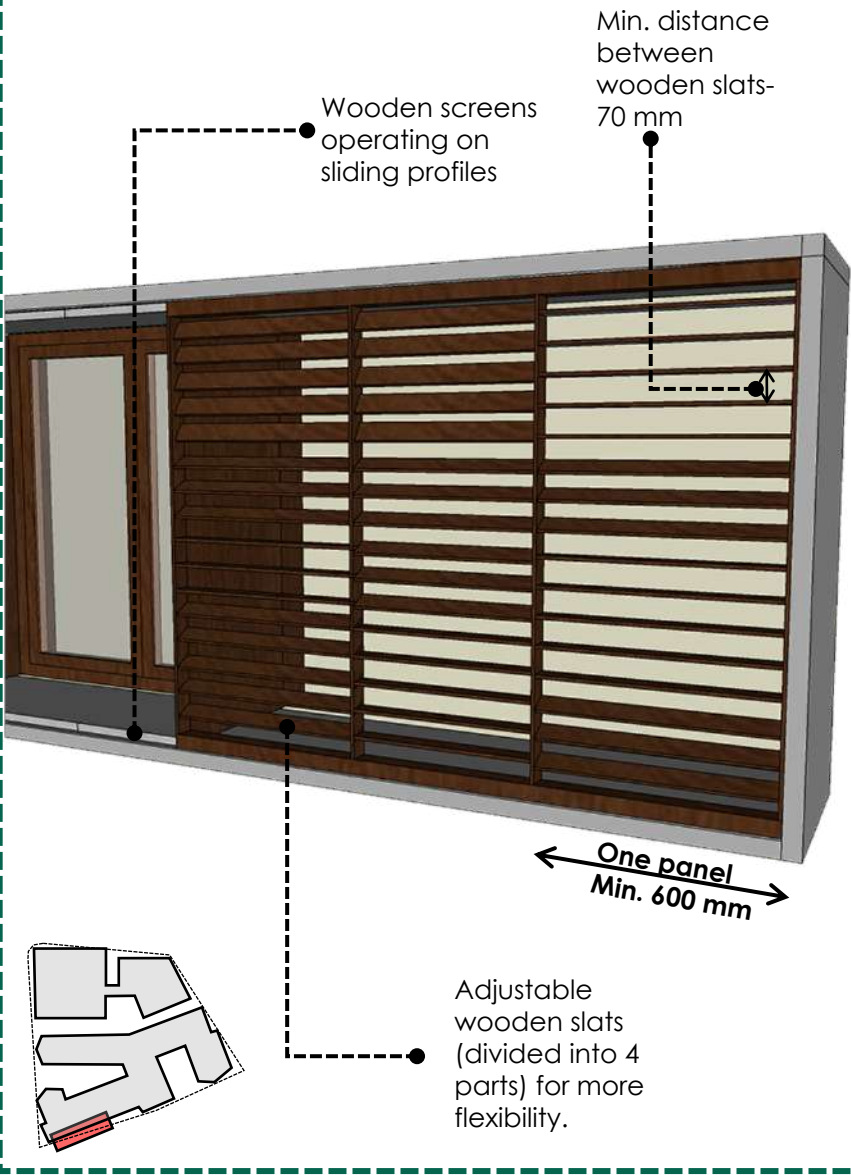
Sliding profile for wooden screens





# Window Details Sample (N-S Side)

## Screen detail



150 mm gap between wooden box and outer edge of window box to allow window panes to open with screen in front.

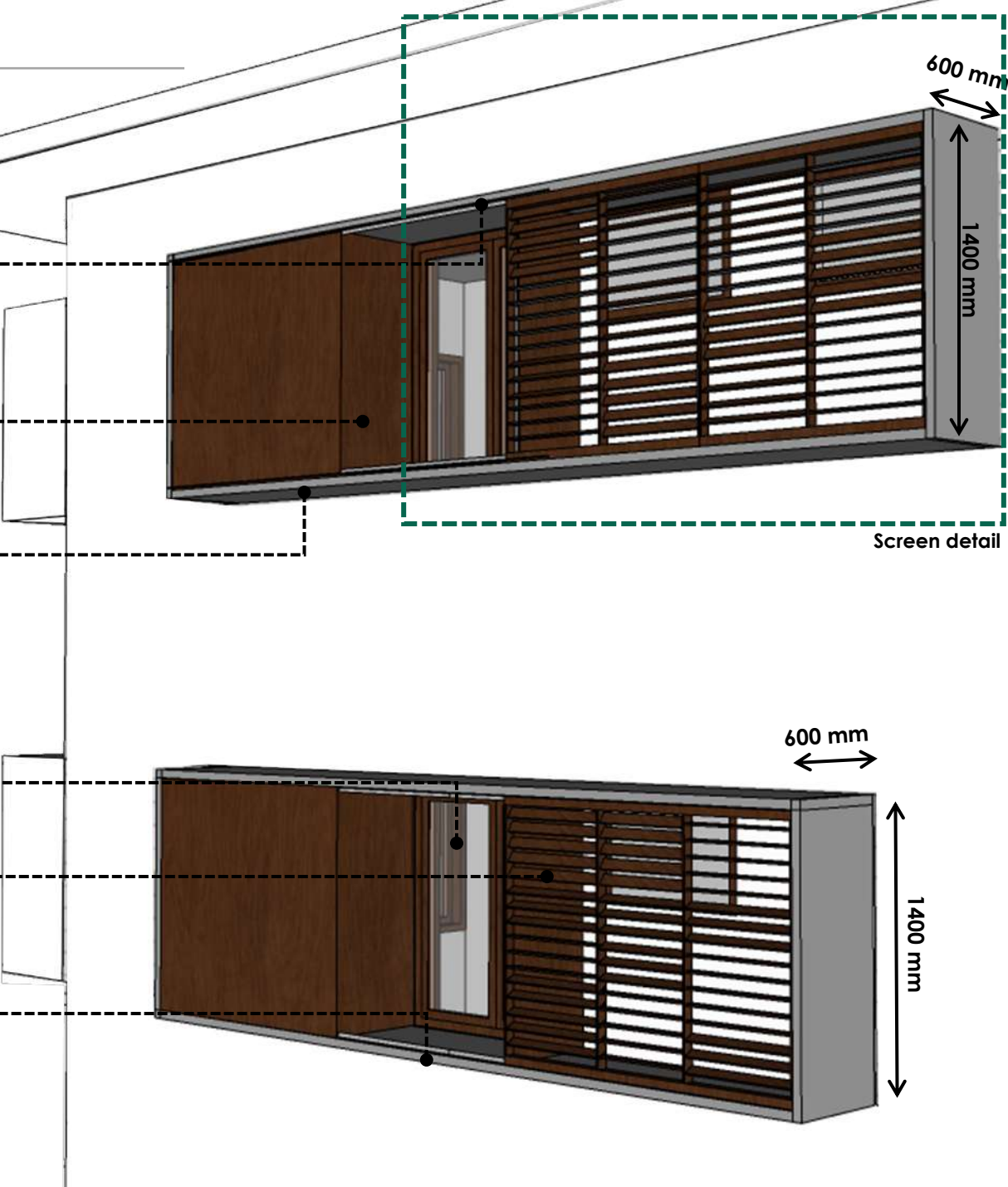
Angular hollow wooden box for visual aesthetic

Extended Aluminium window box

Openable glass panes

Sliding wooden screen for privacy and improved indoor environment

Sliding profile for wooden screens



# Visualizations

- Envisioning the Facility and Key Areas













# Level

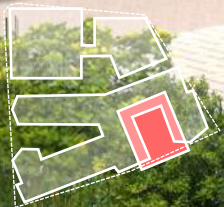
- ↓ First Aid R
- ↓ Manager's
- Vocational Train
- Computer R
- Accomodation
- ↑ Toilet













# 5

## Appendix

- 
- Site and Building Level Calculations
  - Climate Considerations





# Trees- Retained and Removed

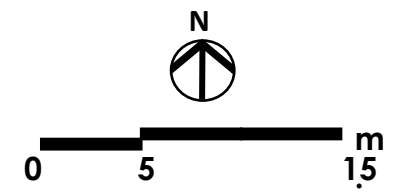


## Trees to be removed

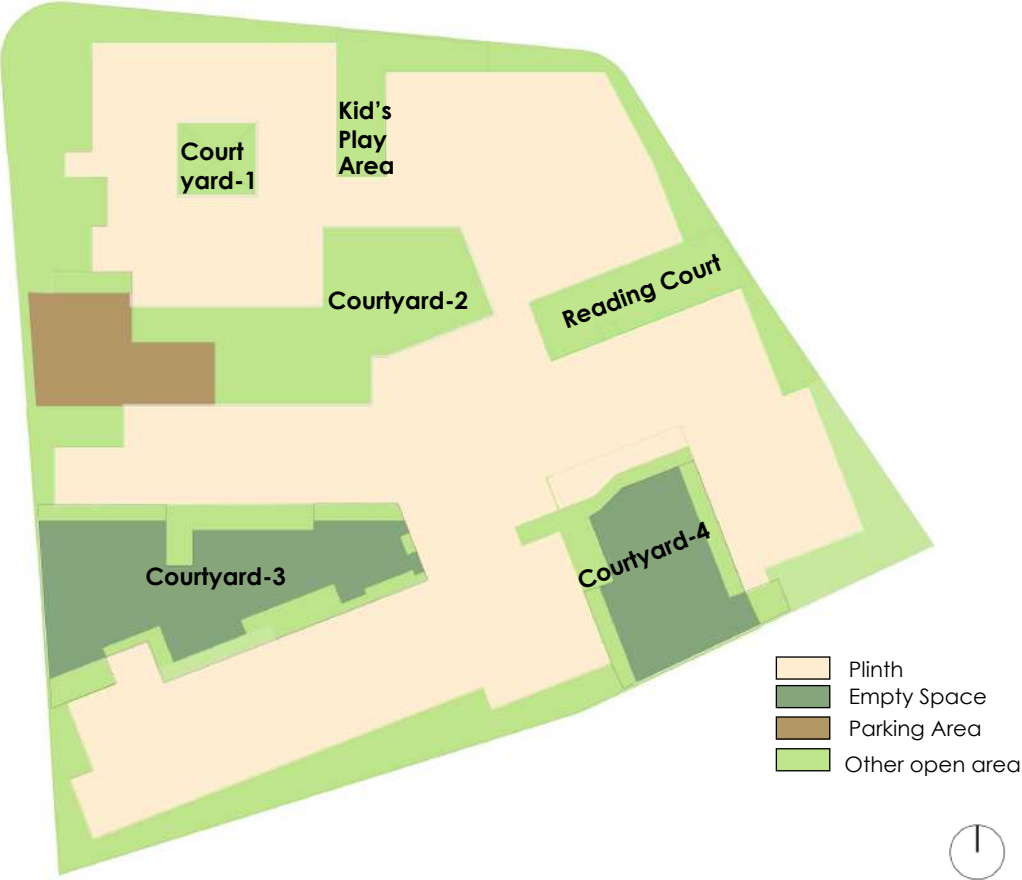
- TR 1 - Bread Fruit Tree
- TR 8 – Coconut Palm Tree
- TR 9 – Ipilipili Tree

## Tress to be retained

- TR 2 - Coconut Palm Tree
- TR 3 - Coconut Palm Tree
- TR 4 - Coconut Palm Tree
- TR 5 - Unknown Palm Tree
- TR 6 - Unknown Large Tree
- TR 7 - Unknown Large Tree
- TR 10 – Ipilipili Tree
- TR 11 - Ipilipili Tree
- TR12 - Water Apple Tree
- TR13 - Coconut Palm Tree
- TR14 - Coconut Palm Tree



# Area Calculations



TOTAL SITE AREA	1985.52 sq. m (21371.95 sq. ft)		
Function	Area (sq. m.)	Area (sq ft)	Percentage
Plinth Area	1071.18	11530.08	53.96 %
Total open space (inclusive of all open area)	914.34	9841.87	46.04 %
1. Total Empty Space	208.55	2244.81	10.5 %
2. Parking Area	59.61	641.63	3 %
3. Other Open Area	646.18	6955.42	32.54 %

Function	Area (sq. m.)
PUBLIC USES	
Security Room	3.79
First Aid Room	16.16
Waiting lounge and Reception	19.06
Manager's Office	13.36
Manager's Washroom	2.71
Prayer Room	6.22
Legal Aid-1	12.60
Counselling Room-1	12.15
Counselling Room-2	12.15
Legal Aid-2	12.60
Utility Area	5.25
Universally accessible toilet-1	5.20
TOTAL	121.25
SEMI PUBLIC USES	
Nursery/ day care center	20.75
Nursery Handwash Area	2.21
Nursery Kid's Toilet	2.17
Breast feeding Room	4.30
Vocational Training Hall	60.84
Computer Room	35.27
VOC Block Utility Area	7.37
VOC Block- Toilet-1	1.33
VOC Block- Universally accessible toilet	4.69
TOTAL	138.93
SUPPORTING USES	
Multi-purpose Hall	31.32
Library	18.30
Dining Hall	35.31
Dining Handwash Area	3.72
Dining Universally Accessible Toilet	4
Utensil Disposal	2.85
Kitchen and Pantry	24.57
Utility	3.67
Laundry Room	10.50
TOTAL	134.24

Function	Area (sq. m.)
RESIDENTIAL BLOCK	
Multi-occupancy Unit-1 Rm-1	12.95
Multi-occupancy Unit-1 Rm-2	10.90
Multi-occupancy Unit-1 Bath	2.95
Single-occupancy Unit-1	12.90
Single-occupancy Unit-1 Bath	2.95
Multi-occupancy Unit-2 Rm-1	12.95
Multi-occupancy Unit-2 Rm-2	10.90
Multi-occupancy Unit-2 Bath	2.95
Multi-occupancy Unit-3 Rm-1	14.30
Multi-occupancy Unit-3 Rm-2	9.74
Multi-occupancy Unit-3 Bath	2.95
Lounge	15.25
Multi-occupancy Unit-4 Rm-1	13.03
Multi-occupancy Unit-4 Rm-1 Deck	5.28
Multi-occupancy Unit-4 Rm-2	11.10
Multi-occupancy Unit-4 Rm-2 Deck	3.55
Multi-occupancy Unit-4 Bath	2.95
Single-occupancy Unit-2	12.46
Single-occupancy Unit-2 Deck	5.22
Single-occupancy Unit-2 Bath	2.95
Universally accessible Type-1 Unit-1	16.02
Universally accessible Type-1 Unit-2	16.02
Universally accessible Type-1 Unit-3	16.12
Universally accessible Type-2 Unit-1	12.76
Universally Accessible Shared Bath-1	5.90
Universally Accessible Shared Bath-2	6.15
TOTAL	241.20
FIRST FLOOR- OFFICE BLOCK	
Spare Room	16.54
Office Room with Video facility	14.32
Staff Meeting Room	18.15
Maintenance Staff Gathering Area	10.05
Maintenance Staff Rest Area, Locker and Washroom	20.18
Storage Room	8.70
Office Staff Room and Records, Locker, Utility and Washroom	44.83
TOTAL	132.77

Function	Area (sq. m.)
FIRST FLOOR- RESIDENTIAL BLOCK	
Multi-occupancy Unit-5 Rm-1	12.95
Multi-occupancy Unit-5 Rm-2	10.90
Multi-occupancy Unit-5 Bath	2.95
Single-occupancy Unit-3	12.90
Single-occupancy Unit-3 Bath	2.95
Multi-occupancy Unit-6 Rm-1	12.95
Multi-occupancy Unit-6 Rm-2	10.90
Multi-occupancy Unit-6 Bath	2.95
Multi-occupancy Unit-7 Rm-1	14.30
Multi-occupancy Unit-7 Rm-2	9.74
Multi-occupancy Unit-7 Bath	2.95
Single-occupancy Unit-4	11.69
Single-occupancy Unit-4 Bath	3.29
Multi-occupancy Unit-8 Rm-1	16.38
Multi-occupancy Unit-8 Rm-2	14.43
Multi-occupancy Unit-8 Bath	2.95
Single-occupancy Unit-5	14.43
Single-occupancy Unit-5 Bath	2.95
Single-occupancy Unit-6	16.02
Single-occupancy Unit-6 Bath	2.95
Family Unit- 1	22.73
Family Unit-1 Bath	2.87
Family Unit- 2	28.86
Family Unit-2 Bath	2.87
TOTAL	238.86
COURTYARDS	
Courtyard Spaces	Area (sq. m)
Courtyard-1	21.7
Courtyard-2	126.79
Courtyard-3	175.33
Courtyard-4	92.45
Kid's Play Area	37.17
Reading Court	46.97
TOTAL	500.41