

Polytechnic Institute

K.Thulusdhoo

Introduction

Vocational education and training prospects will be expanded through the Polytechnic Center offering Certificate-1 to Advance Diploma Programs. In addition, Degree programs will be offered in the areas of Technical and Vocational Education and Training.

This center will function to impart employable skills to all age groups in the area of Tourism and Hospitality. The facilities will also offer programs in the areas of Aquatic and Marine science and Environmental sciences.

To assure the quality of workmanship and to increase the local productivity, a competent and reliable workforce of both young women and men need to be made active. Number of young people trained with employable skills needs to be increased. Equal opportunity to explore, experience various fields of work and to obtain skills, knowledge, and attitude to continue mastering new technologies needs to be provided to all.

Hence, to make this a reality, institutes with state-of-the-art training facilities with qualified instructors needs to be established. The purpose of this document is to highlight the facilities required to commence operations of technical training institutes to be established in selected regions of Maldives.

Definition of Polytechnic Institutions:

Polytechnic was first created by a Presidential Decree under Article 116 of the constitution of the Maldives on April 12, 2010 as the national government institution to develop, manage and provide training facilities for technical and vocational education and training. Similar to other Vocational training institutes, Polytechnic is necessary because of the role technical and vocational skills is expected to play in reducing the increasing rate of unemployment and under-employment among the youth.

Main objectives of government's initiative to establish Polytechnic Institutes are to create opportunities for school leavers and adult learners to acquire skills, knowledge and values for employability and lifelong learning in a global economy. Students will have opportunities to explore their innovative ideas, create, and experiment their business ventures with the help of mentors and support from the established inhouse services centers.

All programs conducted in the Polytechnic Institutes will be MQA approved programs. Students will be able to join their interested programs in all levels.

An **Aptitude assessment** will be conducted to all students enrolling in the Polytechnic Institutes.

Literacy and numeracy modules will be taught as a core module for the students who do not pass through the pre-assessment exercise.

The programs offered in the three locations will be based on the industries and services available in the regions.

Proposed Modality

Proposed model for the development and operation of Polytechnic Institute is Public-Private Partnership model, whereby private partners will play a vital role in the development, running and operation of the Polytechnic institutes.

Public Private Partnership Model



Under the Public-Private Partnership (PPP) model, the private partner/investor (an industry representative) may use their name/business name in running of its operations. Investor may propose to build commercial areas and conduct business activities that are relevant to an education institute setting (eg: business support services or activities relevant to practical trainings or internships required for the students etc) within the campus area. These Commercial activities are meant for additional revenue generation, in order to support sustainability of the business operations.

Under this agreement, the private partner will develop the physical infrastructure and facilities to run its academic and administrative operations in a profitable model, while utilizing the given land and facilities for revenue-generation.

The role of the government under the PPP model will be to set minimum required standards, regularly inspect and monitor facilities and operation, and provide sponsorship to students (as tuition fees).

Development of Institutions

Land Acquisition

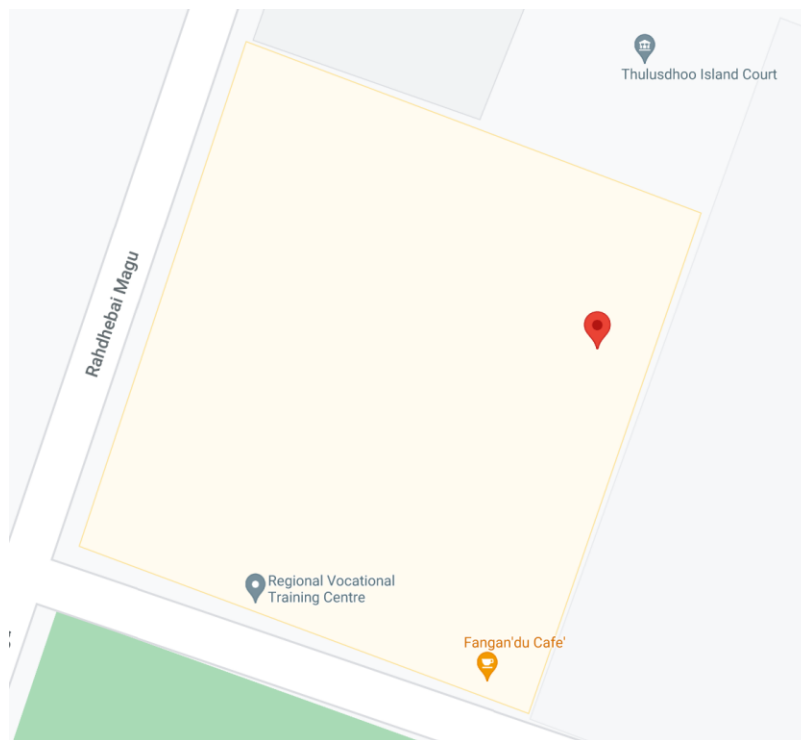
The government will provide land/facility for long term use under the PPP model. Ministry of Higher Education (**MoHE**) shall secure and provide plots from selected islands for the development of Polytechnic institute. There would be no rental charge for the Land.



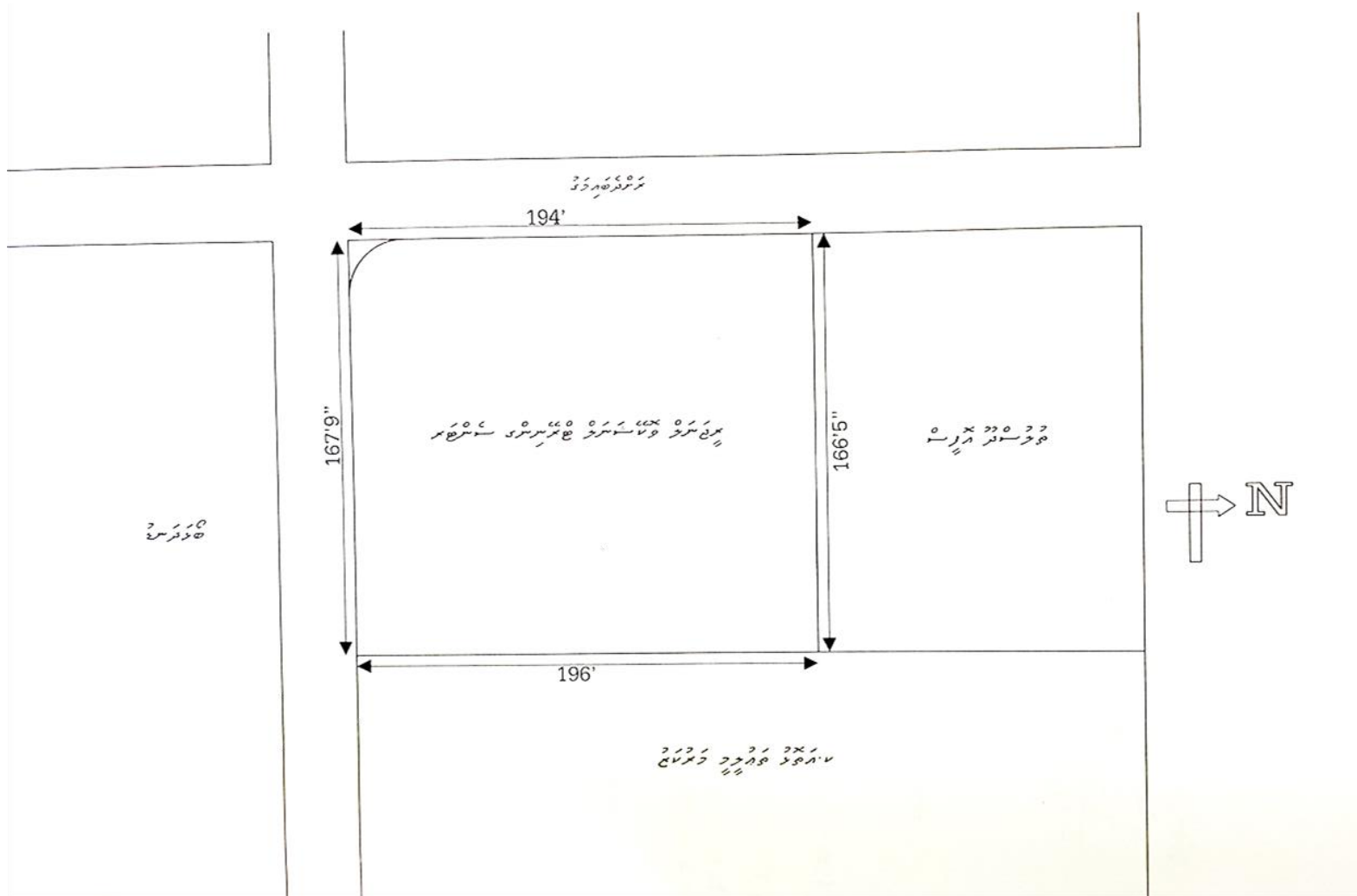
Location

K.Thulusdhoo

Plot area available for the construction and development of Polytechnic Institute and Accommodation Block is approximately **31,500** square feet (sq. ft). Under the Public-Private Partnership model, the private partner (an industry representative) may utilize the land area for revenue generating purposes, provided that it does not affect the primary goals of these institutes and shall be approved from MoHE.



Regional Vocational Training Center, Polytechnic (K.Thulusdhoo) on Google Map



Regional Vocational Training Center, K.Thulusdhoo (dimensions)





Existing facilities in the Regional Vocational Training Center , K. Thulusdhoo

Proposed Agreement Period

Proposed lease period is **25-30** years. The duration of lease is negotiable, can extend up to 50 years.

Economic Benefits / Revenue Streams

- ✓ No rental fees will be charged from the private party for the acquired land plot.
- ✓ MoHE to provide a developed design (concept design and detailed design/drawing) for the development of Polytechnic Institute with Accommodation Block. Detailed design will provide sufficient information for applications for statutory approvals (such as building regulations approval) to be made, thus eliminating the need for design works and associated costs. This shall in no way limit interested party's choice to propose their very own concepts, design or additional facilities to the design. Private party may choose to propose new concept/detailed designs or modify the existing design with approvals from MoHE.
- ✓ Course fees for the pre-approved programs enrolled by local students' will be paid by the government.
- ✓ Additional courses and workshops can be conducted as additional revenue streams. These programs can vary from short courses or workshops to more advanced programs.
- ✓ Investor may propose commercial establishments and business activities that are relevant to an education institute setting (eg: business support services or activities relevant to practical trainings or internships required for the students) within the campus. These Commercial activities are meant for additional revenue generation, in order to support sustainability of the business operations.
- ✓ Private parties may propose their own terms as they deem fit in the development and operations of Polytechnic Institute as long as the primary requirements are met. Such terms shall be agreed upon with MoHE at the agreement stage.

Social Benefits

These institutes are expected to further expand the higher education opportunities for the youths and adults, especially within the outer islands of Maldives. The establishments will create opportunities to acquire skills relevant for the current and emerging employment market needs, especially to young population and the community as a whole, thus reducing the proportion of youth 'Not in Education, Employment or Training' (NEET). Additionally, new job opportunities will be created in the island, which in turn bring in more revenue, thus enriching the lives of people. These institutes are further expected to benefit the established businesses directly and indirectly with a significant number of student population enrolling from other islands each year

Proposed Programs

Technical and vocational training programs can be offered in various different areas. The *courses* offered at the Polytechnic could be as follows. Private party has flexibilities of choosing their own choice of vocational training areas along with the proposed subject areas.

Travel, tourism and leisure

- *Adventure based activities*
- *Ground crew training (airports)*
- *Guiding, tour leading*
- *Leisure and tourism*
- *Recreation and leisure*
- *Recreation management*
- *Tourism*
- *Tourist trades*
- *Travel agency services*
- *Travel and tourism*
- *Travel services*

Hotel, restaurant and catering

- *Bar service*
- *Bartender/mixologist*
- *Catering*
- *Cooking (restaurant and hotel-type)*
- *Culinary arts*
- *Fast food preparation*
- *Food and hospitality services*
- *Food serving*
- *Hospitality services*
- *Hotel and restaurant studies*
- *Hotel receptionist training*
- *Hotel services*
- *Waiting and bar services*

Music and performing arts (optional)

- *Acting and directing*
- *Ballet*
- *Choreography*
- *Circus*
- *Composition (music)*
- *Conducting (music)*
- *Creative and performance art*
- *Dance*
- *Directing (theatre)*
- *Drama*
- *Music*
- *Music composition*
- *Music conducting*
- *Musicology*
- *Performing arts*
- *Theatre/ theatre sciences*

Information Communication Technology

This facility provides the trainees with the opportunity to receive training related to the creating, installing and repairing computer devices, and installing and repairing devices related to Information Communication Technology. Students will explore their creativity and innovations through industry linkage programs and self-research assignments, which will allow the students to exhibit and market their products publicly through incubations centers.



Facilities

Polytechnic Center is expected to have the following facilities. The design works of the institute will be done by MoHE. Private party may choose to proceed with the provided design or modify the current design based on their own preferences.

Student Service Area

Student services area comprises of Care Center and Activity Center

Care Centre

This centre provides in-house counselling services for trainees and staff in a professional manner. The main objective of this centre is to develop the psychological, social, developmental and learning skills of the trainees. The centre provides holistic services to the trainees and staff of the institute by facilitating individual and group counselling sessions, motivational and experience sharing talks and workshops to develop communication and leadership skills of the trainees.

This is where the counsellors provide a safe and comfortable environment for the trainees to openly express their feelings or any issues that trouble them and receive professional help.



Career Services

Career guidance services provides information and guidance about the career pathways, career development methods and information of the different fields of careers available locally and globally.

Administrative Services

Administrative services aim to provide a one-stop service for trainees to receive information about administrative matters such as student passes, student lockers, fees and financial matters.



Academic Staff Room

It is a typical office space with work stations for lecturers. It may refer to a communal work area where lecturers have their desk, comfortable chairs, cabinets and prepare lessons if they do not have a personal office, or may be a common room where teachers and/or school staff can relax, discuss work, eat, drink and socialize while not in class. Academic staff room shall be able to accommodate 18 lecturers.



Smart Classrooms

Classrooms designed with the capacity to accommodate 20 trainees at a time. These classrooms are equipped with Wi-Fi connectivity, configurable tables and chairs, portable poster holders, smart boards, digital sound technology and smart televisions.



Conference/ Seminar Hall

- 50 pax Capacity
- Sound system with mic and Audio /Video



Technical and Vocational Training Laboratories/Workshops

These are Technical and Vocational training laboratories or workshops meant for practical activities and hands-on experience for trainees. These labs can vary from institute to institute depending on the proposed curriculum. Each laboratories or workshops should be equipped with proper facilities, tools and machineries to conduct practical trainings for at least 15 trainees at a time. Vocational training facilities (practical workrooms or workshops) will be needed in the following areas.

- Travel, tourism and leisure
- Hotel, restaurant and catering

A training hotel and a restaurant will be ideal for student's training and practical lessons and internships if needed. The hotel can also be used for commercial purposes to generate revenue.

An ICT Lab will also be needed to conduct ICT related programs.

Sports Complex

Sports Complex consists of indoor and outdoor sports area. The indoor facilities can accommodate Badminton, Table Tennis, Billiard, Chess and Carrom while the outdoor area provides space to play games like, basket, volley, futsal, netball and hand ball.

The flexible usage of the open field for sports and games, helps to increase interest in sports as well as promotes health and fitness for trainees.



Activity Centre

This is an informal learning area. It is where the trainees gather to play, learn or collaborate. Trainees are welcome to book various facilities and equipment such as meeting rooms, foosball tables, pool tables, board games and digital games. These games aim to promote interaction and discussions among trainees.



Gym

The gym is intended for trainees of Sports and Fitness related programs. It contains equipment for health and fitness performance and assessments that are aligned to the industry standards. Access to public shall be granted on paid basis, this will raise fund for Gym maintenance.

Meeting Rooms

- Meeting rooms of different sizes: small, medium and large for different occasions

Accommodation Block

This facility provides accommodation for 100 students. Accommodation block must be housed in a separate building.

- Each room will accommodate 2 people.
- AC rooms with attached bathroom.
- Every trainee will be provided with a single bed, wardrobe and a study desk.
- Common kitchen, dining area and laundry facility for every floor.
- Security, storage and maintenance room.
- Management Office
- Cafeteria (food catering services to students/staffs accommodating at the university and accommodation block)

Other Facilities within the campus

Prayer Rooms

- Prayer rooms with ablution area for both men and women separately.

Toilets / Showers

- Two toilets in every floor for trainees and for staff. One set of showers for every workshop for trainees to use to clean themselves after workshop sessions.

Security

- CCTV coverage of all critical locations within and outside. A control room for security personnel.

Storage Facility

- Storage of tools, equipment and consumables used at workshops to be safely stored for further use.

Lockers

- Facility to store personal belonging like books, stationaries and etc.

Landscaping

- Landscape design of investors choice to create an outdoor oasis, from florals to canopied pathways.