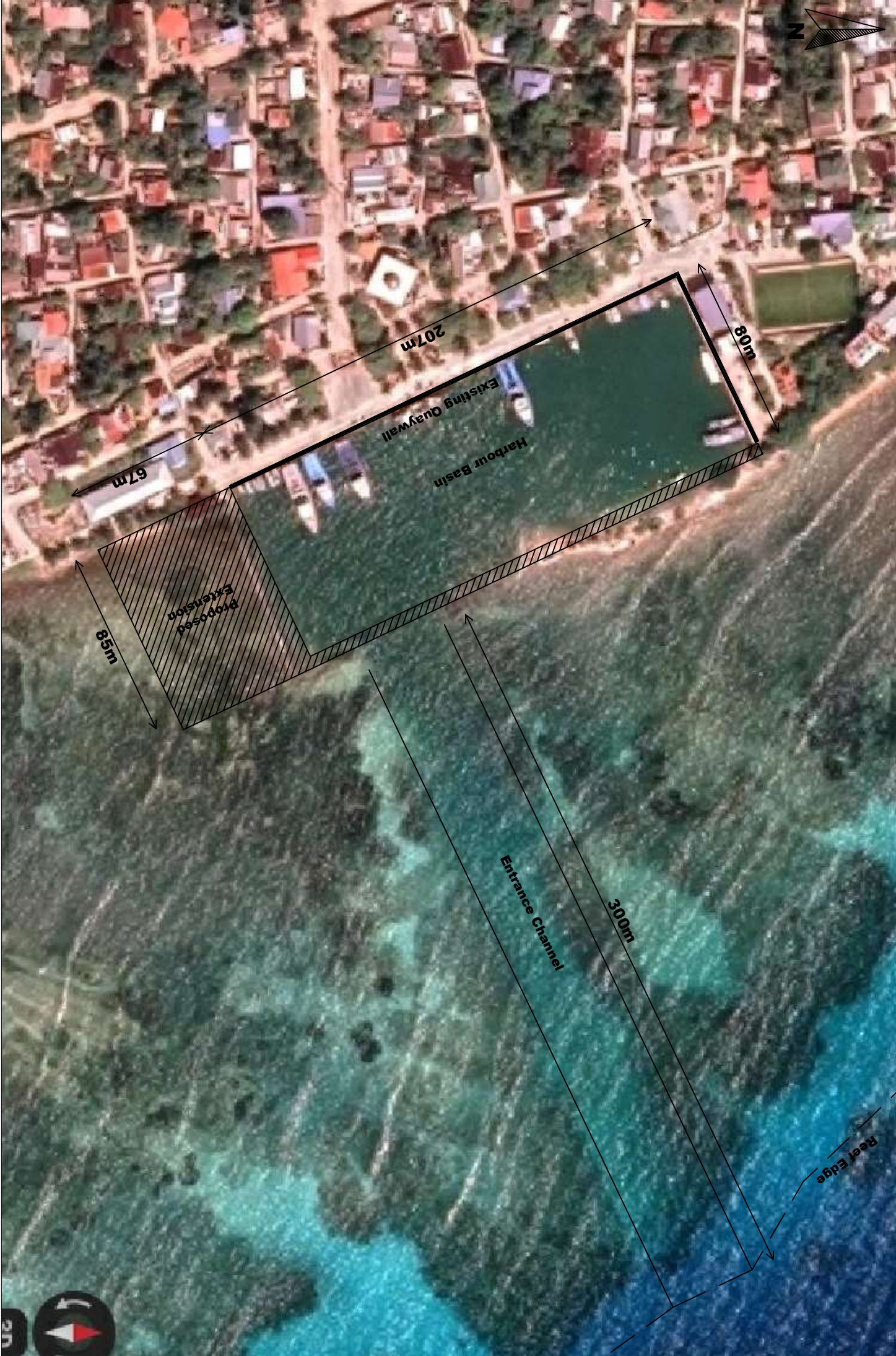




PROJECT: GA. KOLAMAAFUSHI HARBOUR
CONTENTS: EXISTING HARBOUR LAYOUT

SCALE: 1:2000
DATE: AUG 2019



MINISTRY OF NATIONAL PLANNING & INFRASTRUCTURE
INFRASTRUCTURE DEPARTMENT
AERZEN, MALÉ, MALDIVES, DATE: 20202, REPUBLIC OF MALDIVES
TEL: +960 3004300, FAX: +960 3004301