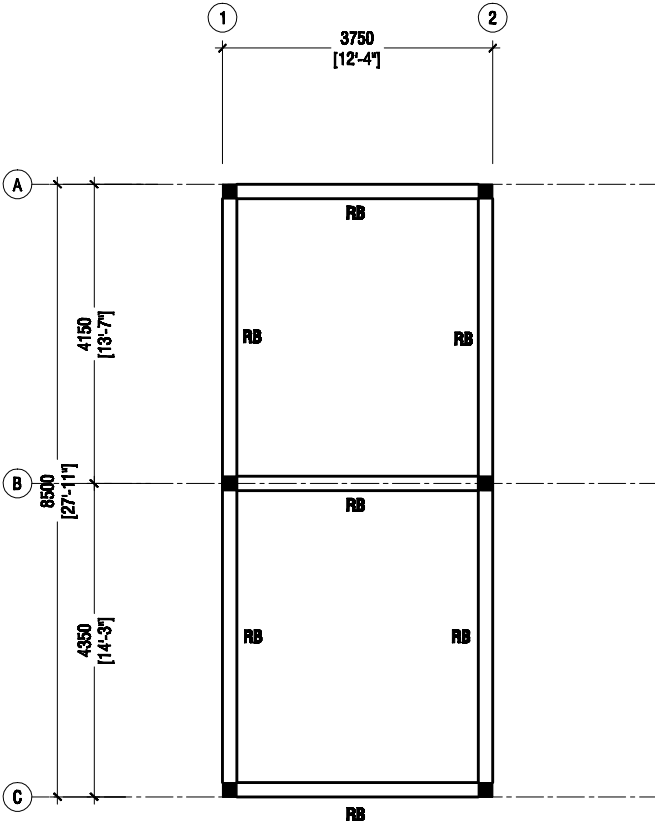


**FOUNDATION PLAN (ABLUTION)**

SCALE 1:100

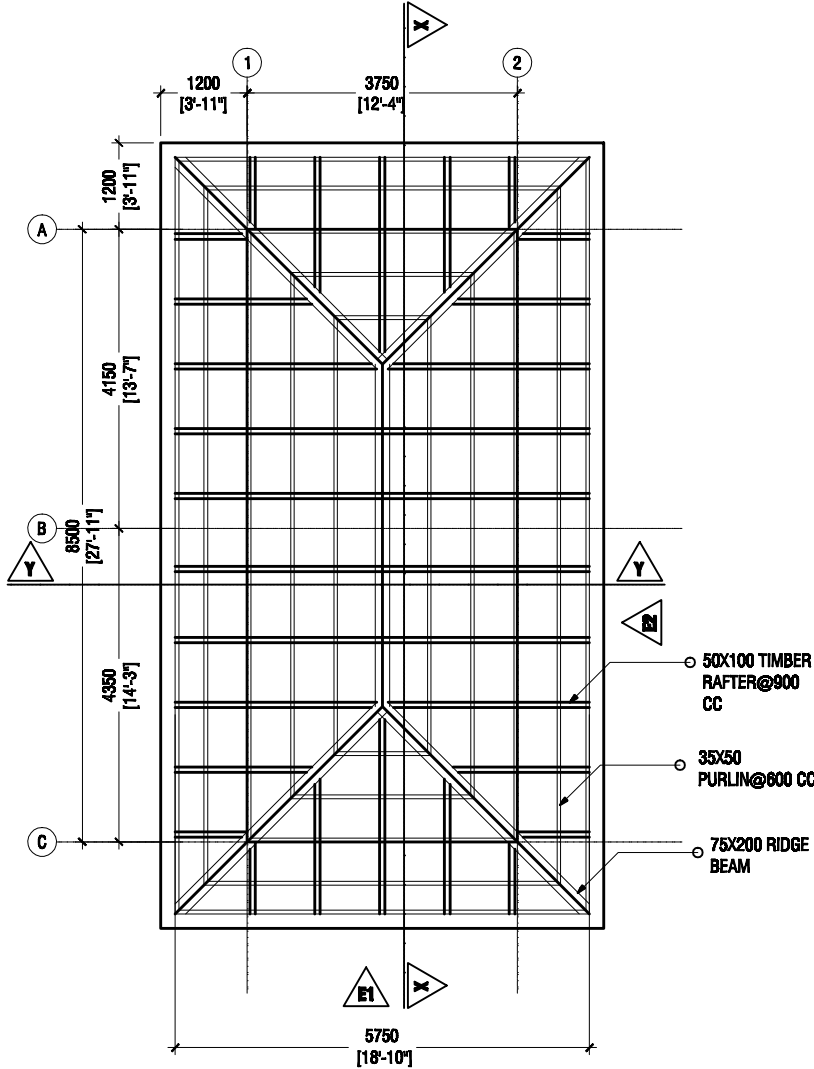


- FOUNDATION depth - 500mm
- 75mm THICK GROUND SLAB ON FILL REINFORCED WITH R8@ 250 C/C B/W (B)



**BEAM PLAN (ABLUTION)**

SCALE 1:100



**ROOF FRAMING PLAN (ABLUTION)**

SCALE 1:100



PROJECT:  
**F.DHARABOODHOO  
MOSQUE (304 PAX)**



**INFRASTRUCTURE  
DEVELOPMENT SECTION**

**MINISTRY OF ISLAMIC  
AFFAIRS**