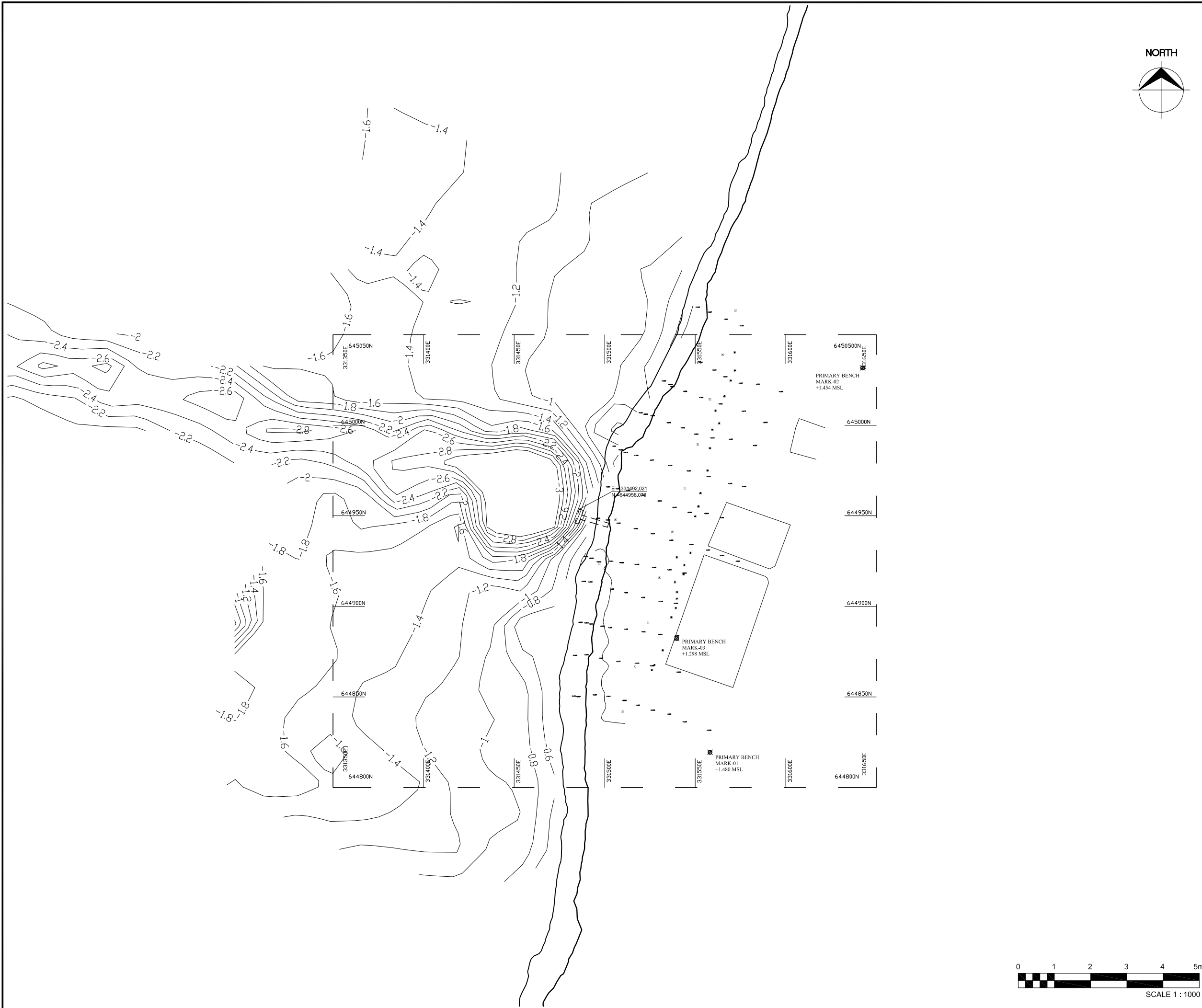


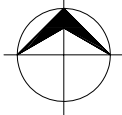
N.MAAFARU HARBOUR LIST OF DRAWINGS		
DWG. NOS	DRAWING TITLES	REV. NO
MF-CI-00	LIST OF DRAWINGS	0
MF-CI-01	EXISTING LAYOUT	0
MF-CI-01a	LOCATION PLAN	0
MF-CI-02	NEW DESIGN LAYOUT	0
MF-CI-03	ENTRANCE CHANEL LAYOUT	0
MF-CI-04	DREDGING PLAN	0
MF-CI-05	QUAY WALL DETAILS (SHEET 01 OF 06)	0
MF-CI-05	QUAY WALL DETAILS (SHEET 02 OF 06)	0
MF-CI-05	QUAY WALL DETAILS (SHEET 03 OF 06)	0
MF-CI-05	QUAY WALL DETAILS (SHEET 04 OF 06)	0
MF-CI-05	QUAY WALL DETAILS (SHEET 05 OF 06)	0
MF-CI-05	QUAY WALL DETAILS (SHEET 06 OF 06)	0
MF-CI-06	BREAKWATER DETAILS (SHEET 01 OF 02)	0
MF-CI-06	BREAKWATER DETAILS (SHEET 02 OF 02)	0
MF-CI-07	TYPICAL DETAILS	0

NOTES:

REV.	DATE	DESCRIPTION	DRAWN	CHKD.	APPRD.
REVISION					
CLIENT					
<div><div></div><div>MINISTRY OF HOUSING & INFRASTRUCTURE REPUBLIC OF MALDIVES</div></div>					
CONSULTANT:					
<div><div></div><div>Al-Habshi Consultants Office Tel.: 2430103 / 2433131 - Fax : 2431136 P.O.Box 27154 Safat 13132 - Kuwait</div></div>					
PROJECT:					
RECONSTRUCTION OF HARBORS PHASE-2					
DRAWING TITTLE:					
N.MAAFARU HARBOUR LIST OF DRAWINGS					
DESIGNED	DRAWN	CHECKED	APPROVED	SCALE	DATE
SS	JP	MS	MA	N.T.S	20-06-14
PROJECT No.	SHEET No.	DRAWING No.			
K-601	1 OF 1	MF-CI-00			
REV. No.	0				



NORTH





NOTES:

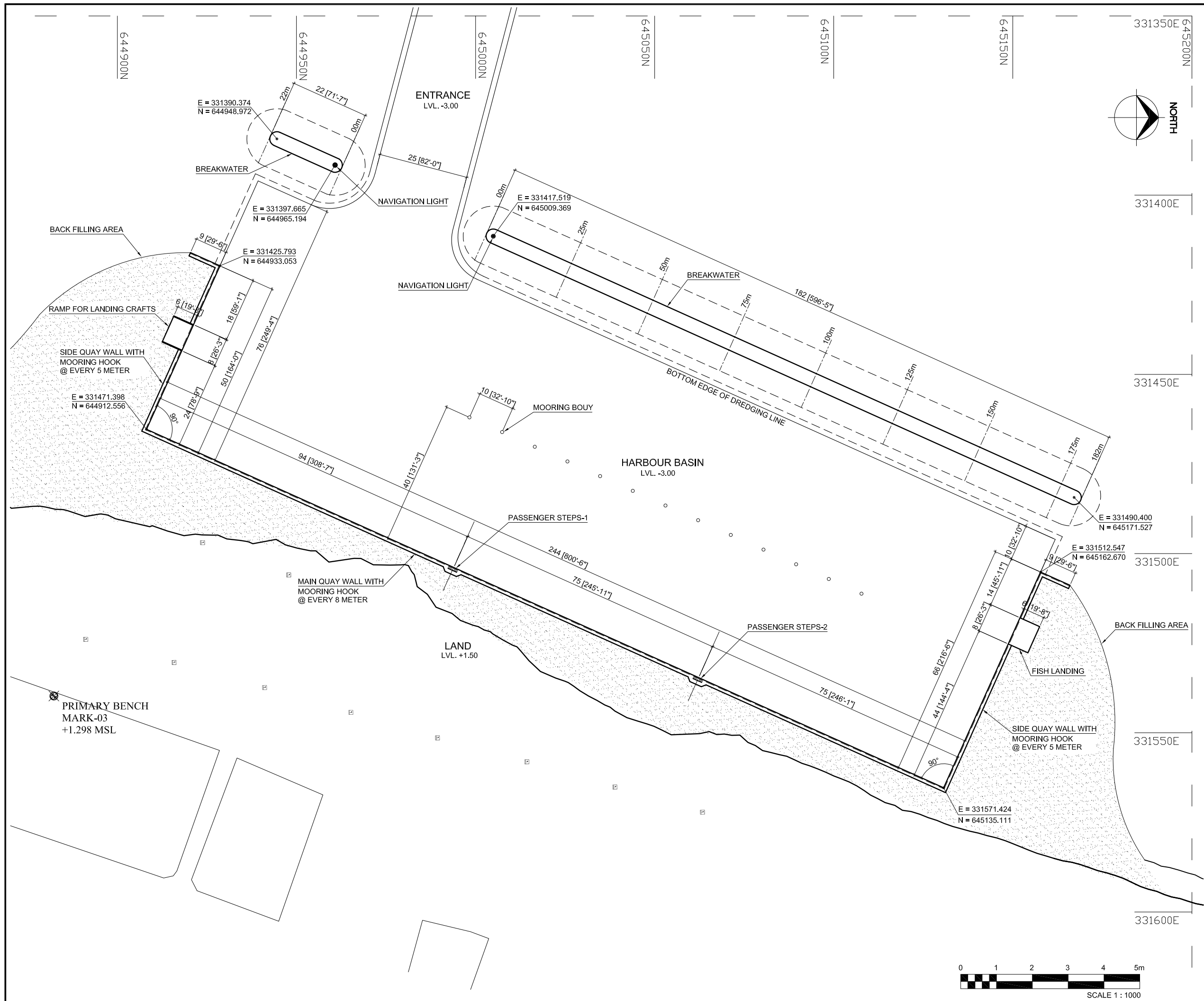
BENCH MARK :

Benchmark
PBM-1 = +1.480m(331558.161E,644819.387N)
PBM-2 = +1.454m(331642.431E,645031.653N)
PBM-3 = +1.298m(335139.738E,644882.274N)

LEGENDS:-

- BEACH LINE (TOE OF BEACH)
- EDGE OF VEGETATION
- CONTOUR LINE
- BOAT JETTY

REV.	DATE	DESCRIPTION	DRAWN	CHKD.	APPRD.
REVISION					
CLIENT					
<div></div> <div>MINISTRY OF HOUSING & INFRASTRUCTURE</div> <div>REPUBLIC OF MALDIVES</div>					
CONSULTANT:					
<div></div> <div>Al-Habshi Consultants Office</div> <div>Tel.: 2430103 / 2433131 - Fax : 2431136 P.O.Box 27154 Safat 13132 - Kuwait</div>					
PROJECT:					
RECONSTRUCTION OF HARBORS					
PHASE-2					
DRAWING TITLE:					
N.MAAFARU HARBOUR					
EXISTING LAYOUT					
DESIGNED	DRAWN	CHECKED	APPROVED	SCALE	DATE
SS	JP	MS	MA	1:1000	20-06-14
PROJECT No.	SHEET No.	DRAWING No.			
K-601	1 OF 1	MF-CI-01			
REV. No.	0				





NOTES:

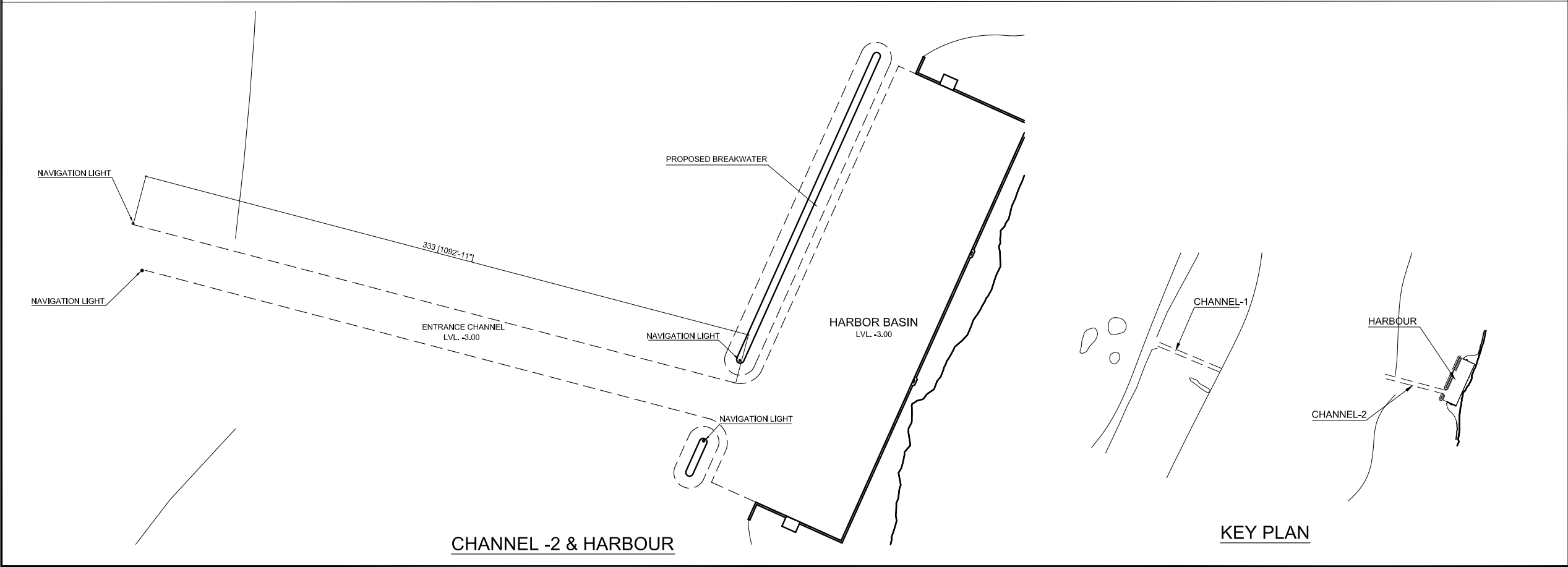
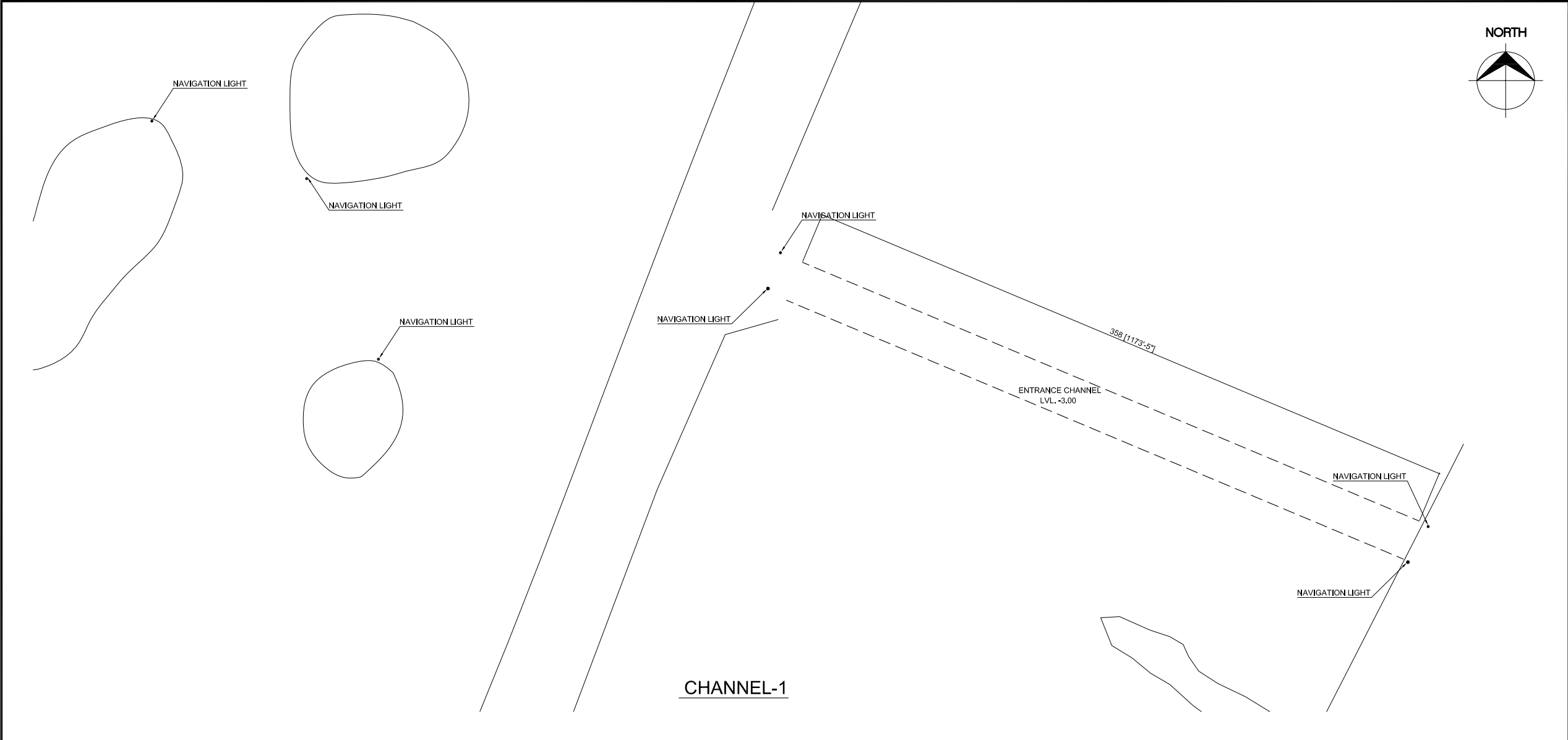
1- ALL DIMENSIONS AND LEVELS ARE IN METER, UNLESS OTHERWISE SHOWN.

2- FISH LANDING & CARGO LOADING LOCATIONS ARE INDICATIVE, FINAL LOCATION MAY BE AGREED UPON IN SITE.



BENCH MARK :

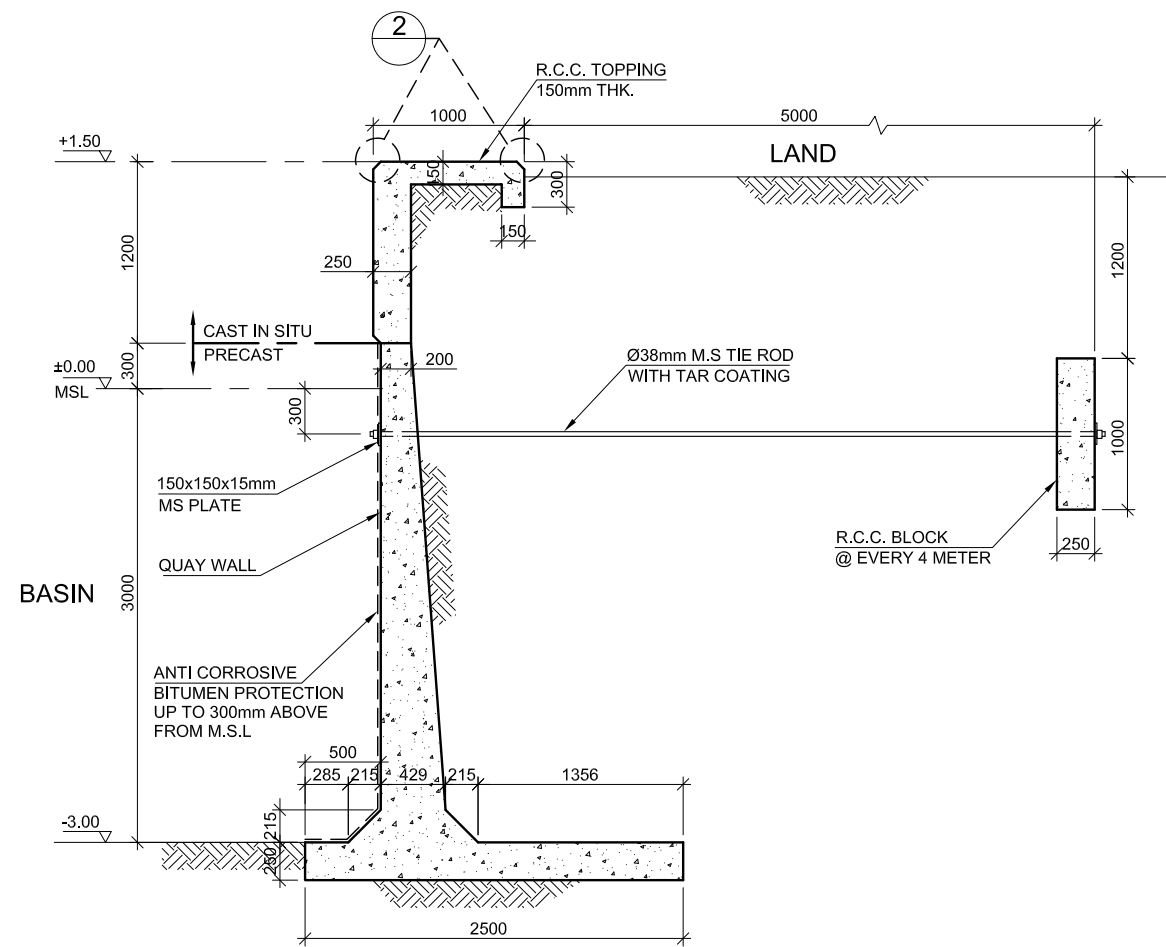
Benchmark
PBM-1 = +1.480m(331558.161E,644819.387N)
PBM-2 = +1.454m(331642.431E,645031.653N)
PBM-3 = +1.298m(335139.738E,644882.274N)

REV.	DATE	DESCRIPTION	DRAWN	CHKD.	APPROD.
REVISION					
CLIENT					
<div>MINISTRY OF HOUSING & INFRASTRUCTURE REPUBLIC OF MALDIVES</div>					
CONSULTANT:					
<div><div><div><div>Al-Habshi</div><div>Consultants</div></div></div><div>Al-Habshi Consultants Office Tel.: 2430103 / 2433131 - Fax : 2431136 P.O.Box 27154 Safat 13132 - Kuwait</div></div>					
PROJECT:					
RECONSTRUCTION OF HARBORS PHASE-2					
DRAWING TITLE:					
N.MAAFARU HARBOUR NEW DESIGN LAYOUT					
DESIGNED	DRAWN	CHECKED	APPROVED	SCALE	DATE
SS	JP	MS	MA	1:1000	22-06-14
PROJECT No.	SHEET No.	DRAWING No.			
K-601	1 OF 1	NM-HB-CI-02			
REV. No.	0				

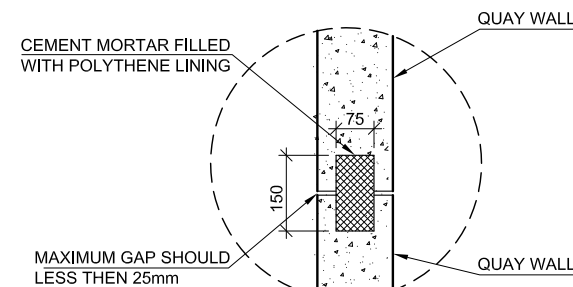


NOTES:
1- ALL DIMENSIONS ARE IN METER, UNLESS OTHERWISE SHOWN.

REV.	DATE	DESCRIPTION	DRAWN	CHKD.	APPRD.
REVISION					
CLIENT					
 MINISTRY OF HOUSING & INFRASTRUCTURE REPUBLIC OF MALDIVES					
CONSULTANT:					
 Al-Habshi Consultants Office Tel.: 2430103 / 2433131 - Fax : 2431136 P.O.Box 27154 Safat 13132 - Kuwait					
PROJECT:					
RECONSTRUCTION OF HARBORS PHASE-2					
DRAWING TITLE:					
N.MAAFARU HARBOUR ENTRANCE CHANEL LAYOUT					
DESIGNED	DRAWN	CHECKED	APPROVED	SCALE	DATE
SS	JP	MS	MA	1:2500	20-06-14
PROJECT No.	SHEET No.	DRAWING No.			
K-601	1 OF 1	MF-CI-03			
REV. No.	0				

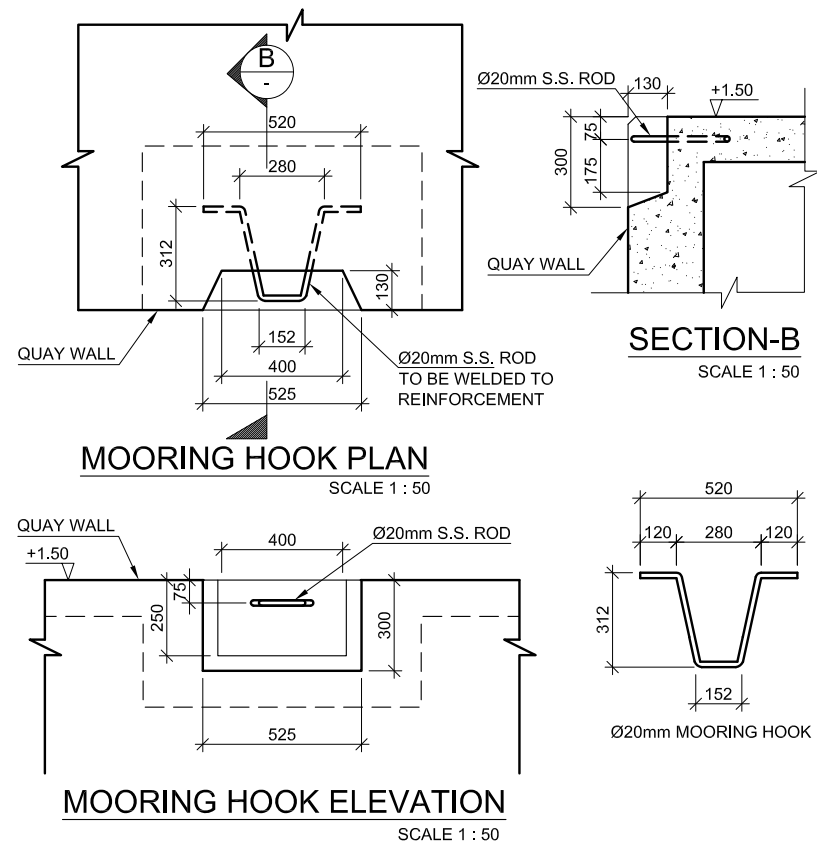


SECTION-A
SCALE 1 : 50

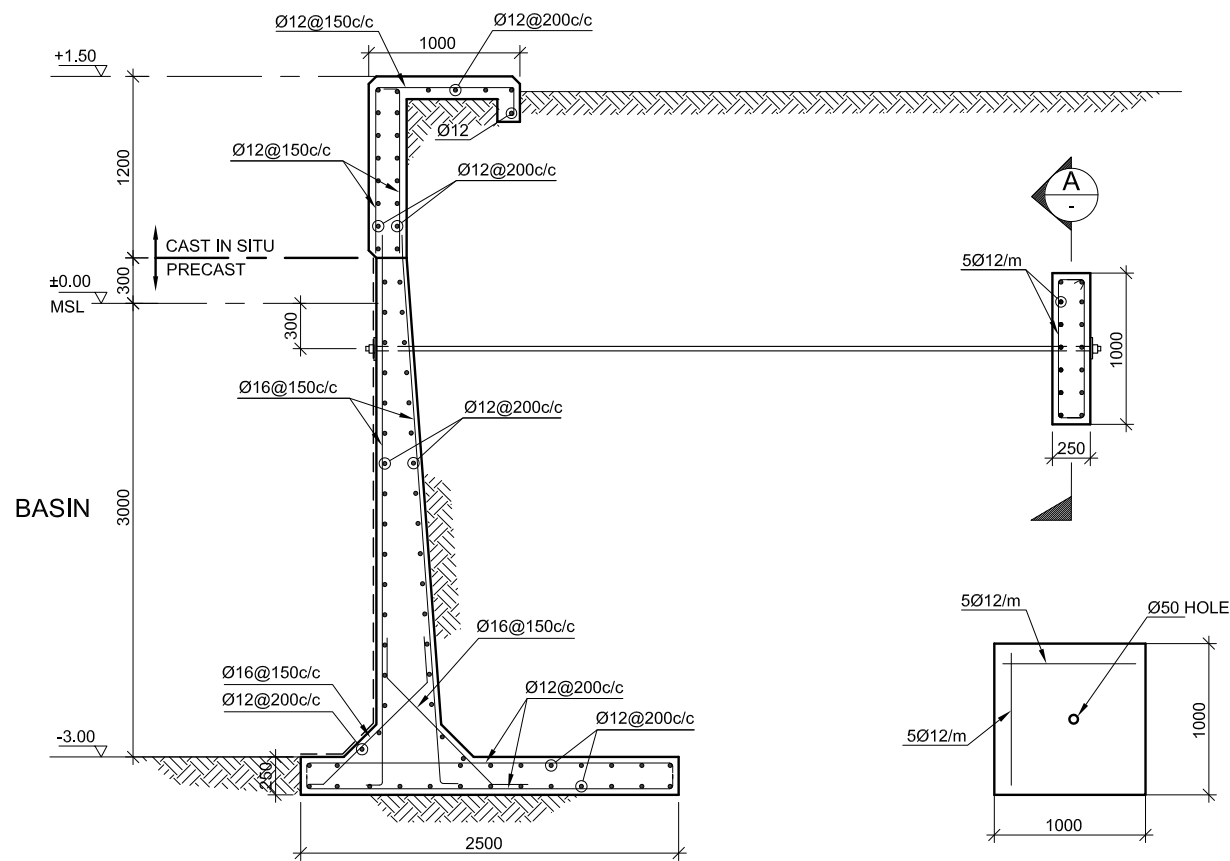


DETAIL-3

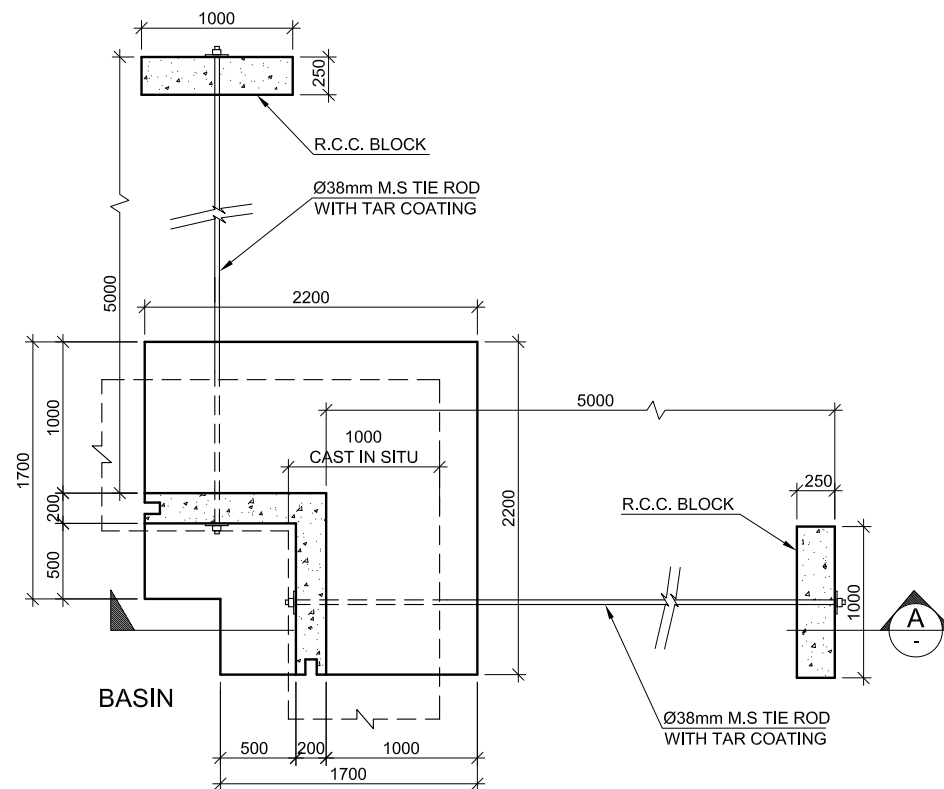
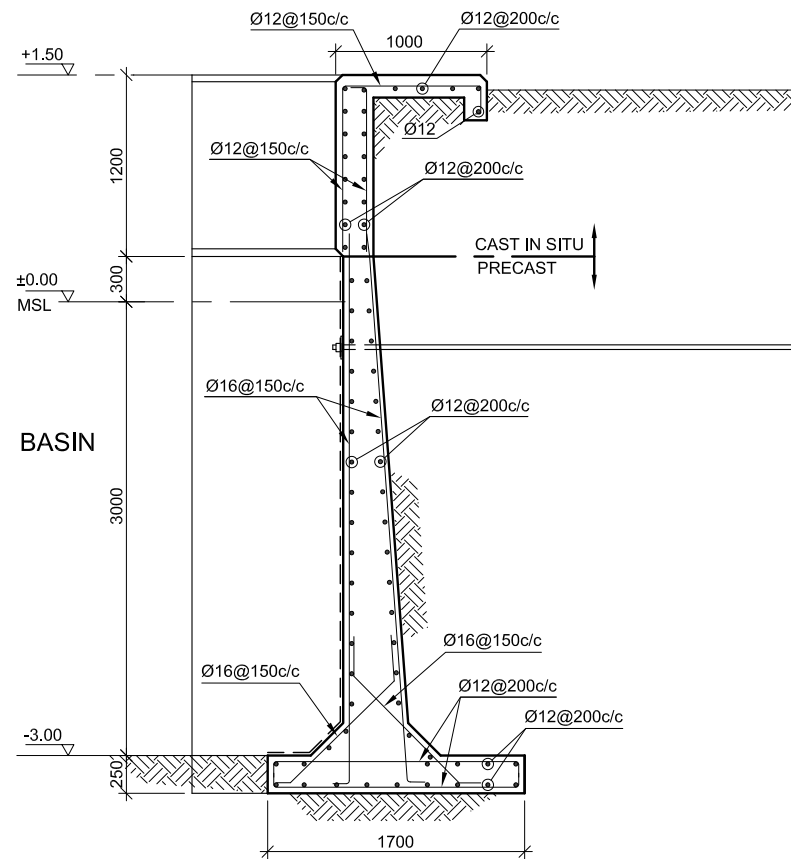
DESIGNED	DRAWN	CHECKED	APPROVED	SCALE	DATE
SS	JP	MS	MA	1:50	20-06-'14
PROJECT No.	SHEET No.	DRAWING No. MF-CI-05			
K-601	1 OF 6				
REV. No.	0				



SECTION-B
SCALE 1 : 50





SECTION -A
SCALE 1 : 50

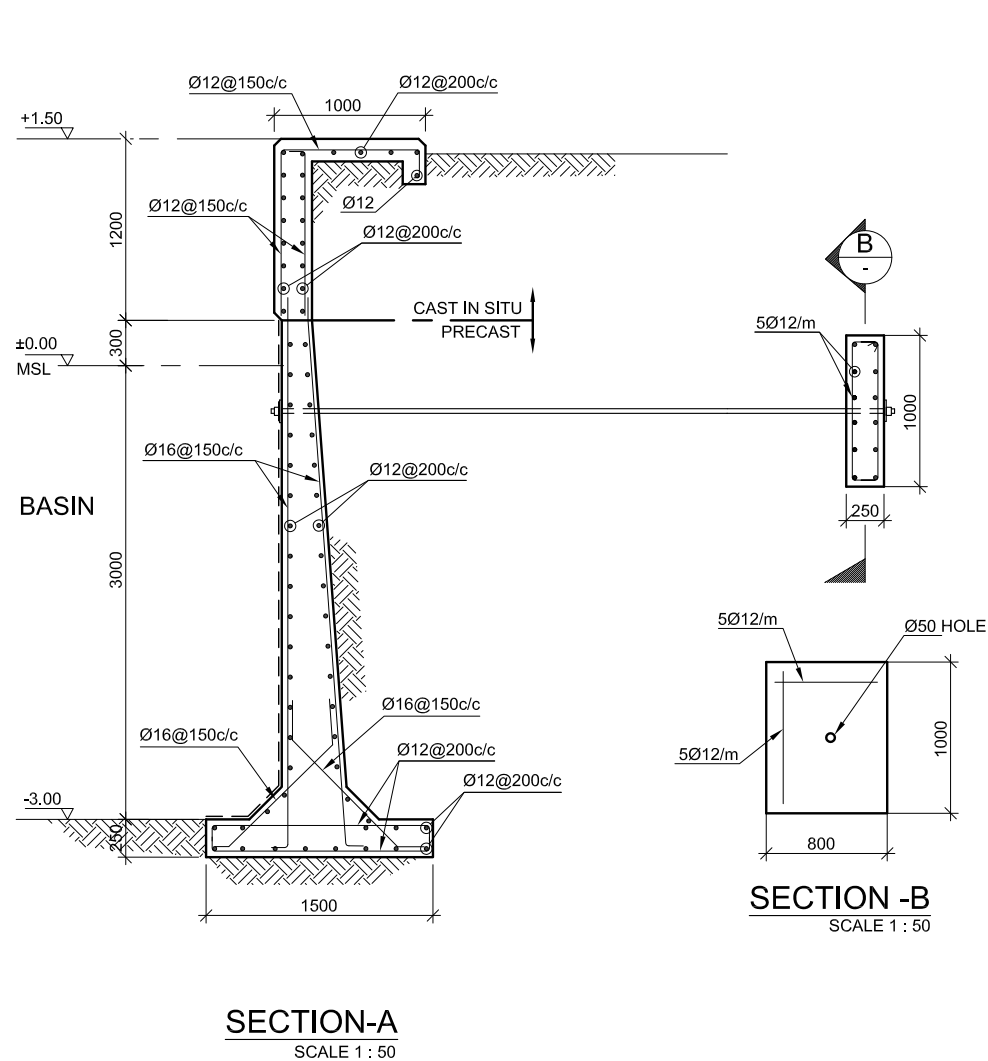


90° CORNER QUAY WALL

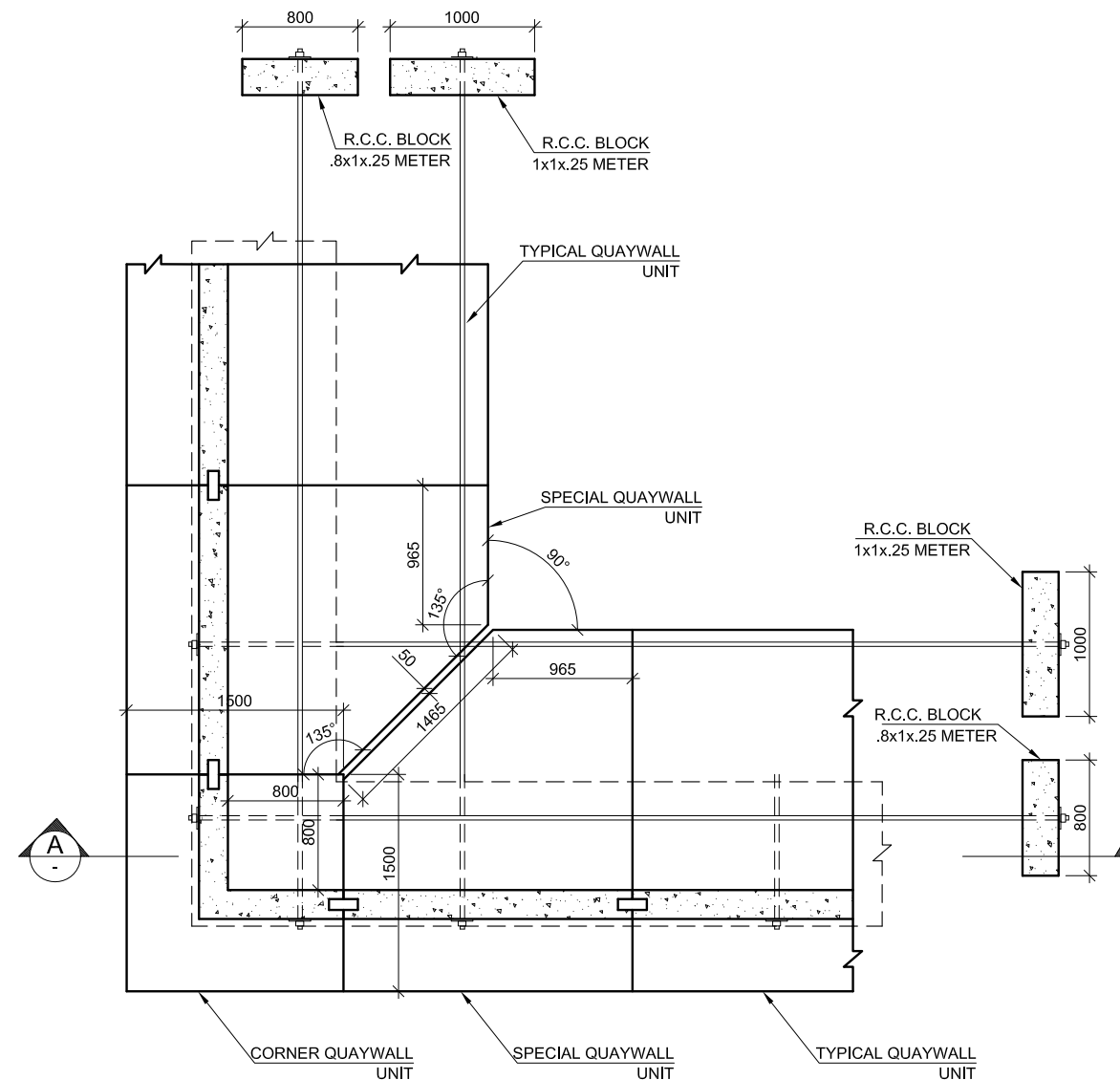
NOTES:

- 1 - ALL DIMENSIONS ARE IN MILLIMETER AND LEVELS ARE IN METER UNLESS OTHERWISE SHOWN
- 2 - PLAIN CEMENT CONCRETE (PCC) SHALL BE OF GRADE C10 (OR 10 N / MM² WHEN COMPRESSIVE STRENGTH AT 28 DAYS)
- 3 - REINFORCED CEMENT CONCRETE (RCC) FOR WATER RETAINING STRUCTURE SHALL BE C35 (OR 35 N / MM² COMPRESSIVE STRENGTH AT 28 DAYS)
- 4 - YIELD STRENGTH OF STEEL REINFORCEMENT SHALL BE 460 N / MM²
- 5 - ALL STRUCTURE CONCRETE SHALL BE FROM SULPHATE RESISTANT CEMENT

REV.	DATE	DESCRIPTION	DRAWN	CHKD.	APPRD.
REVISION					
CLIENT					
<div></div> <div>MINISTRY OF HOUSING & INFRASTRUCTURE</div> <div>REPUBLIC OF MALDIVES</div>					
CONSULTANT:					
<div><div><div>Al-Habshi Consultant</div><div></div></div><div>Al-Habshi Consultants Office</div><div>Tel: 2430103 / 2433131 - Fax : 2431136 P.O.Box 27154 Safat 13132 - Kuwait</div></div>					
PROJECT:					
RECONSTRUCTION OF HARBORS					
PHASE-2					
DRAWING TITLE:					
N.MAAFARU HARBOUR					
QUAY WALL DETAILS					
DESIGNED	DRAWN	CHECKED	APPROVED	SCALE	DATE
SS	JP	MS	MA	1:50	20-06-14
PROJECT No.	SHEET No.	DRAWING No.			
K-601	2 OF 6	MF-CI-05			
REV. No.	0				



SECTION -B
SCALE 1 : 50




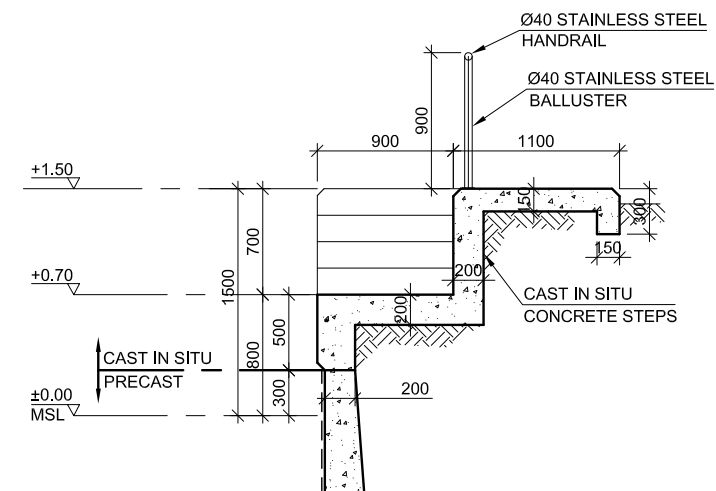
PLAN
SCALE 1 : 50

270° CORNER QUAY WALL

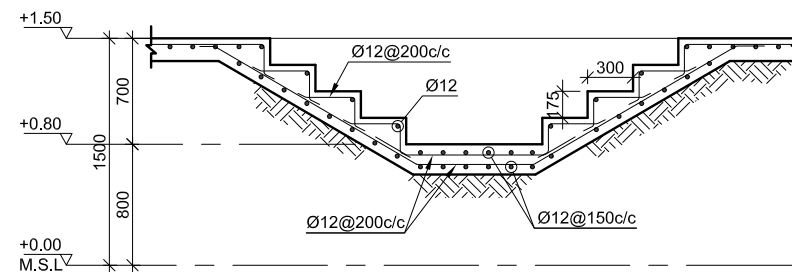
NOTES:

- 1 - ALL DIMENSIONS ARE IN MILLIMETER AND LEVELS ARE IN METER UNLESS OTHERWISE SHOWN
- 2 - PLAIN CEMENT CONCRETE (PCC) SHALL BE OF GRADE C10 (OR 10 N/ MM² WHEN COMPRESSIVE STRENGTH AT 28 DAYS)
- 3 - REINFORCED CEMENT CONCRETE (RCC) FOR WATER RETAINING STRUCTURE SHALL BE C35 (OR 35 N/ MM²) COMPRESSIVE STRENGTH AT 28 DAYS)
- 4 - YIELD STRENGTH OF STEEL REINFORCEMENT SHALL BE 460 N/ MM²
- 5 - ALL STRUCTURE CONCRETE SHALL BE FROM SULPHATE RESISTANT CEMENT

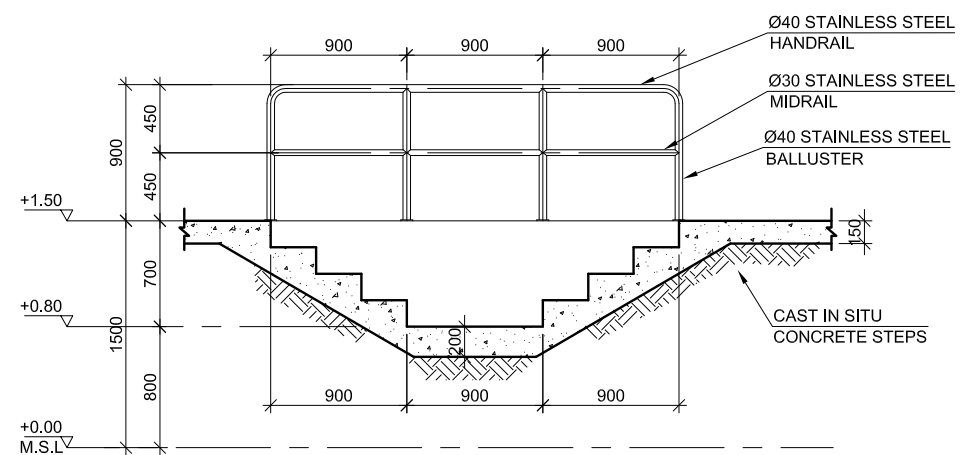
REV.	DATE	DESCRIPTION	DRAWN	CHKD.	APPRD.
REVISION					
CLIENT					
 MINISTRY OF HOUSING & INFRASTRUCTURE REPUBLIC OF MALDIVES					
CONSULTANT:					
 Al-Habshi Consultants Office Tel: 2430103 / 2433131 - Fax: 2431136 P.O.Box 27154 Safat 13132 - Kuwait					
PROJECT:					
RECONSTRUCTION OF HARBORS PHASE-2					
DRAWING TITLE:					
N.MAAFARU HARBOUR QUAY WALL DETAILS					
DESIGNED	DRAWN	CHECKED	APPROVED	SCALE	DATE
SS	JP	MS	MA	1:50	20-06-14
PROJECT No.	SHEET No.	DRAWING No.			
K-601	3 OF 6	MF-CI-05			
REV. No.	0				



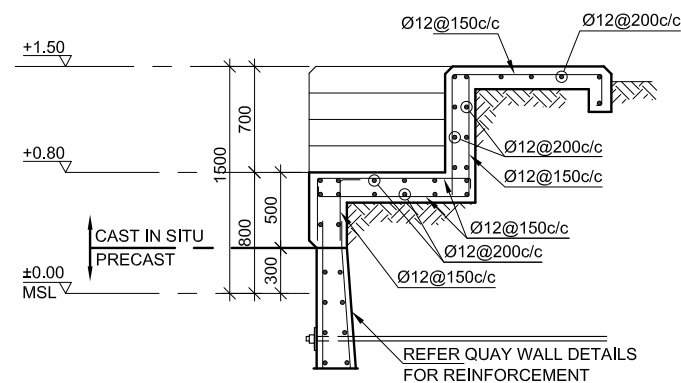
SECTION-B
SCALE 1 : 50



SECTION-A (REINFORCED)
SCALE 1 : 50



SECTION-A
SCALE 1 : 50




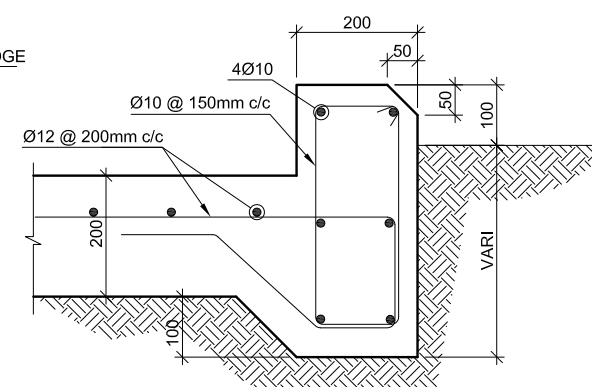
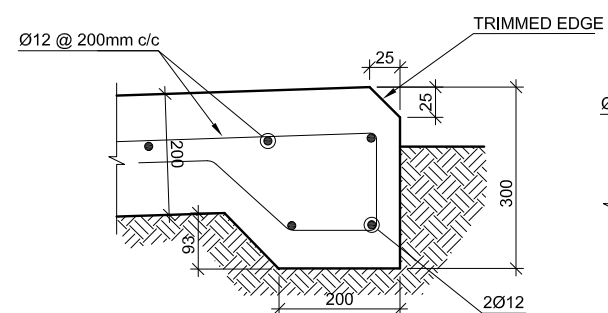
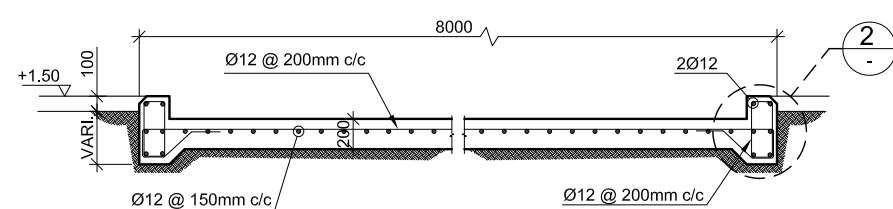
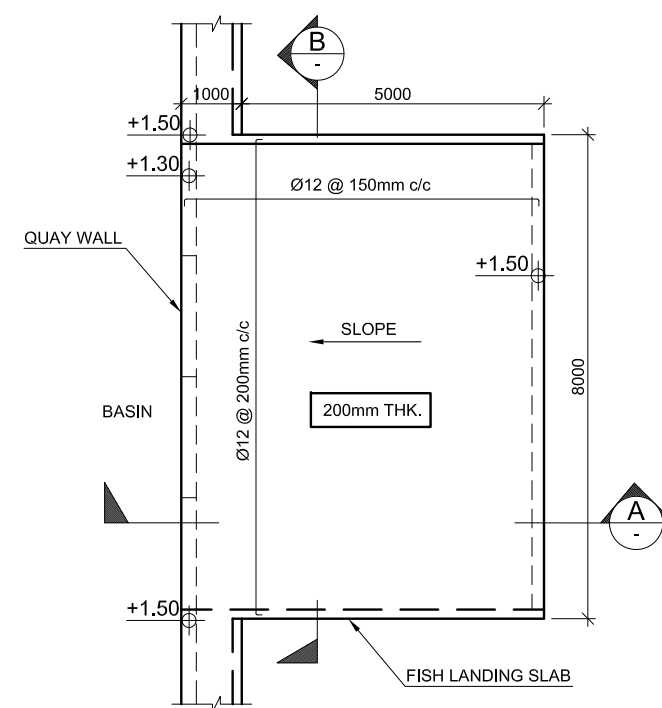
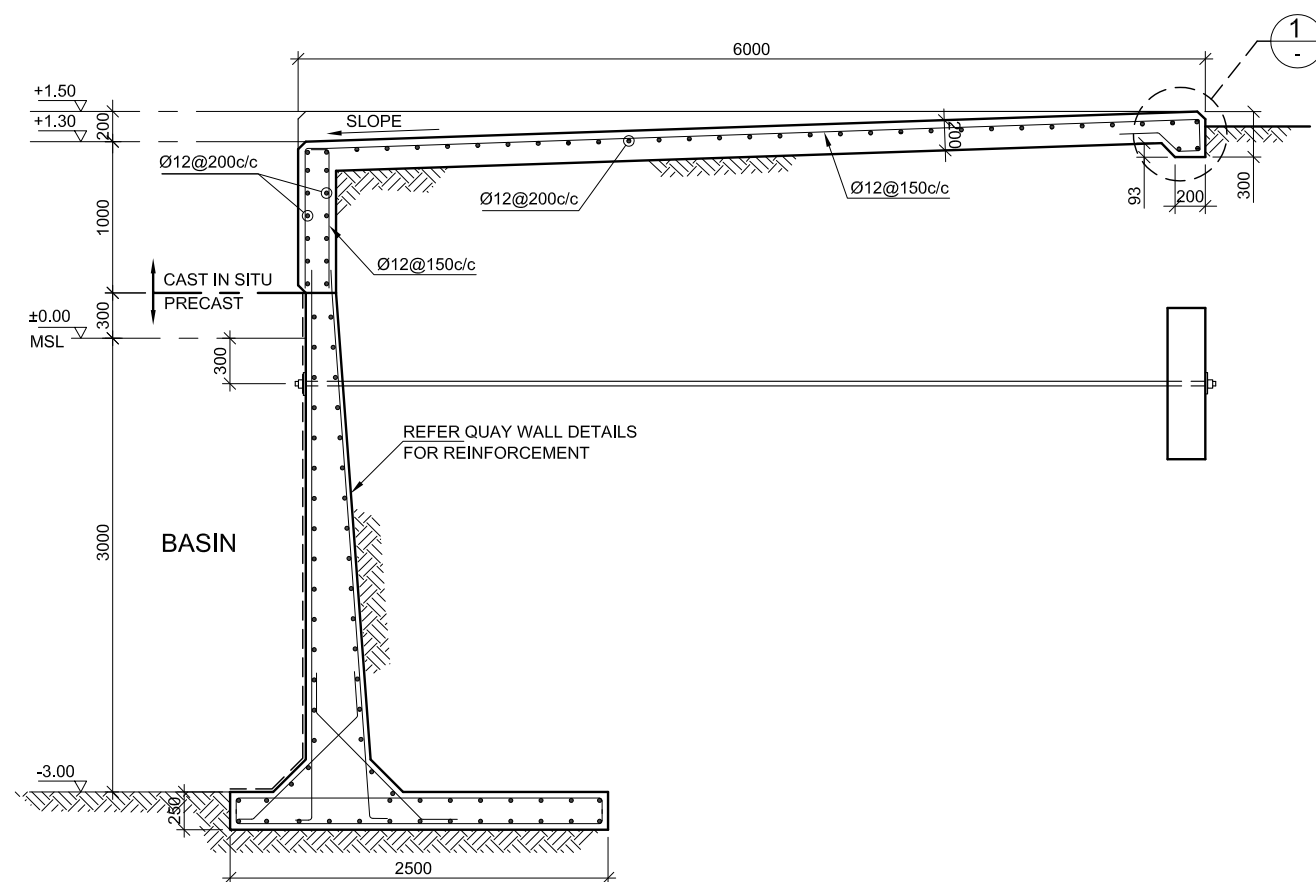
SECTION-B (REINFORCED)
SCALE 1 : 50

PASSENGER STEPS

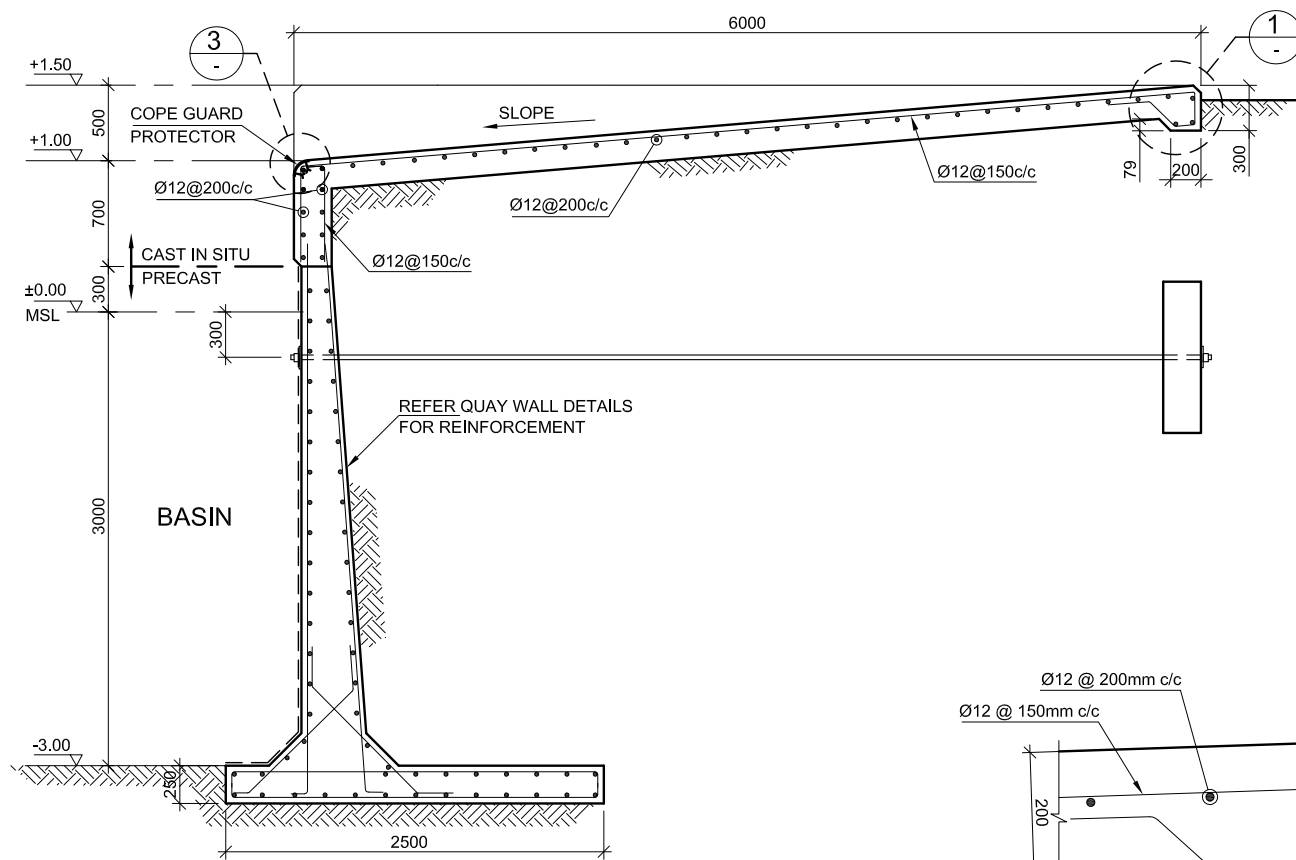
NOTES:

- 1 - ALL DIMENSIONS ARE IN MILLIMETER AND LEVELS ARE IN METER UNLESS OTHERWISE SHOWN
- 2 - PLAIN CEMENT CONCRETE (PCC) SHALL BE OF GRADE C10 (OR 10 N/ MM² WHEN COMPRESSIVE STRENGTH AT 28 DAYS)
- 3 - REINFORCED CEMENT CONCRETE (RCC) FOR WATER RETAINING STRUCTURE SHALL BE C35 (OR 35 N/ MM² COMPRESSIVE STRENGTH AT 28 DAYS)
- 4 - YIELD STRENGTH OF STEEL REINFORCEMENT SHALL BE 460 N/ MM²
- 5 - ALL STRUCTURE CONCRETE SHALL BE FROM SULPHATE RESISTANT CEMENT

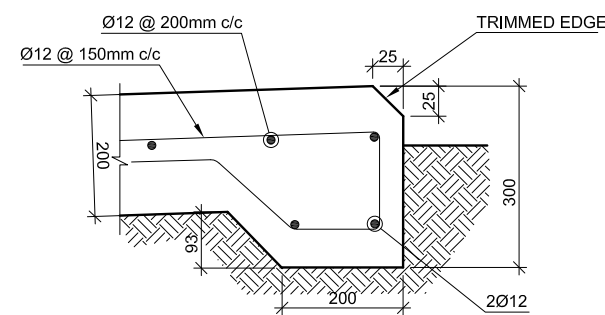
REV.	DATE	DESCRIPTION				DRAWN	CHKD.	APPRD.	
REVISION									
CLIENT									
 MINISTRY OF HOUSING & INFRASTRUCTURE REPUBLIC OF MALDIVES									
CONSULTANT:									
 A-Habshi Consultant Al-Habshi Consultants Office Tel.: 2430103 / 2433131 - Fax : 2431136 P.O.Box 27154 Safat 13132 - Kuwait									
PROJECT:									
RECONSTRUCTION OF HARBORS PHASE-2									
DRAWING TITLE:									
N.MAAFARU HARBOUR QUAY WALL DETAILS									
DESIGNED	DRAWN	CHECKED	APPROVED		SCALE	DATE			
SS	JP	MS	MA		1:50	20-06-14			
PROJECT No.		SHEET No.	DRAWING No.						
K-601	4 OF 6								
REV. No.	n		MF-CI-05						



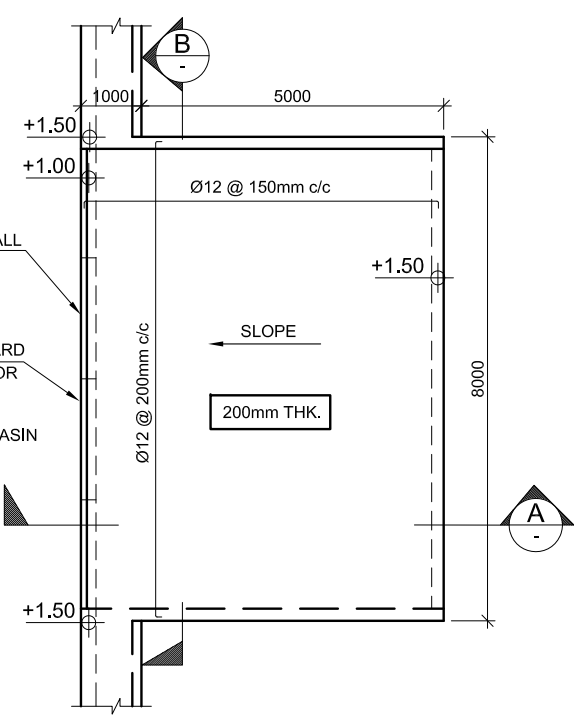
DRAWING TITLE:					
N.MAAFARU HARBOUR					
QUAY WALL DETAILS DETAILS					
DESIGNED	DRAWN	CHECKED	APPROVED	SCALE	DATE
SS	JP	MS	MA	1:50	20-06-
PROJECT No.		SHEET No.		DRAWING No.	
K-601		5 OF 6		MF-CI-05	
REV. No.		n			



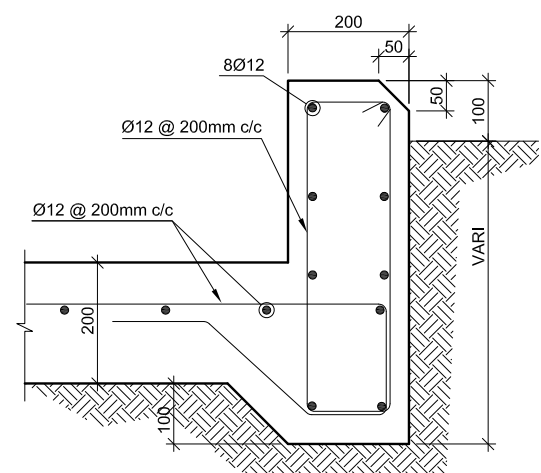
SECTION-A
SCALE 1 : 50



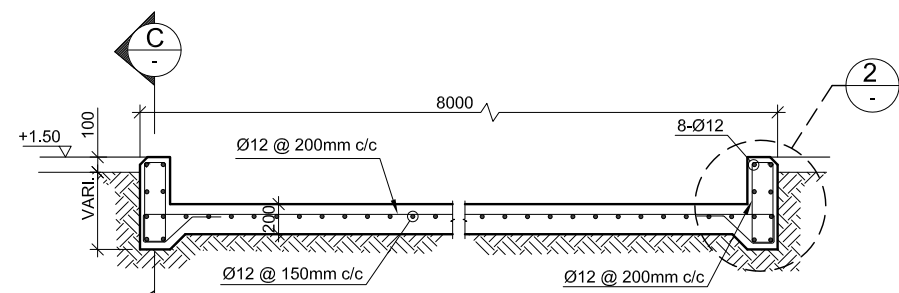
DETAIL-1



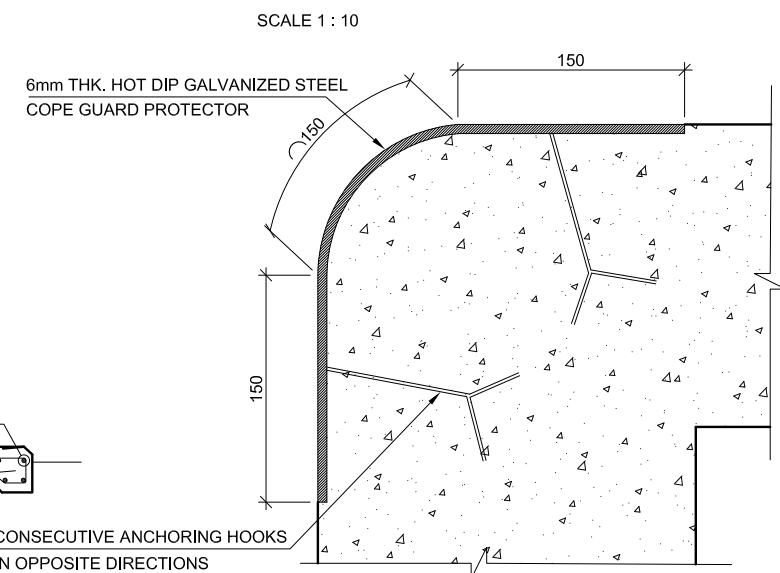
PLAN
SCALE 1 : 25



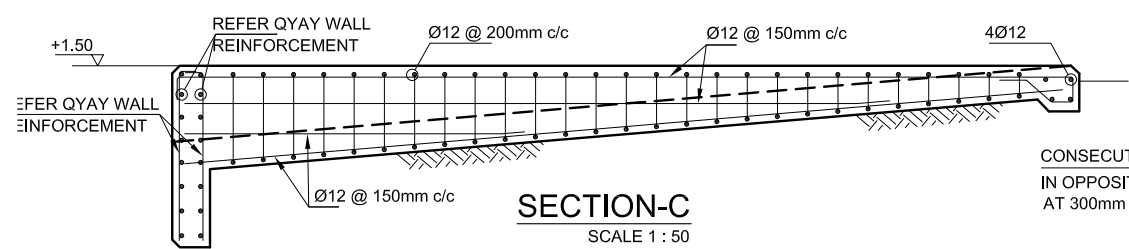
DETAIL-2
SCALE 1 : 10



SECTION-B
SCALE 1 : 50




DETAIL-3
SCALE 1 : 25

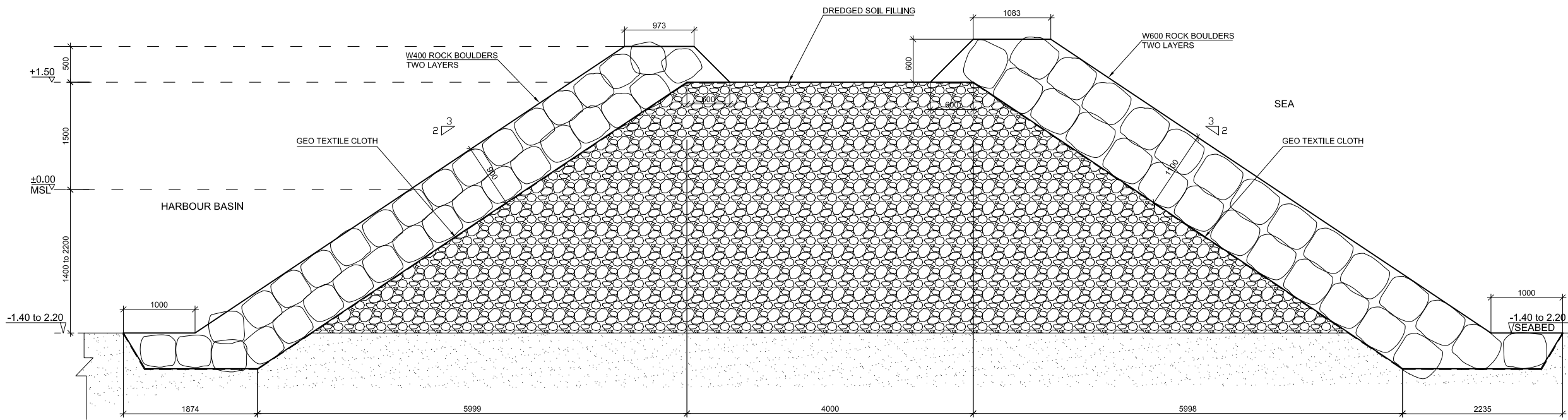


SECTION-C
SCALE 1 : 50

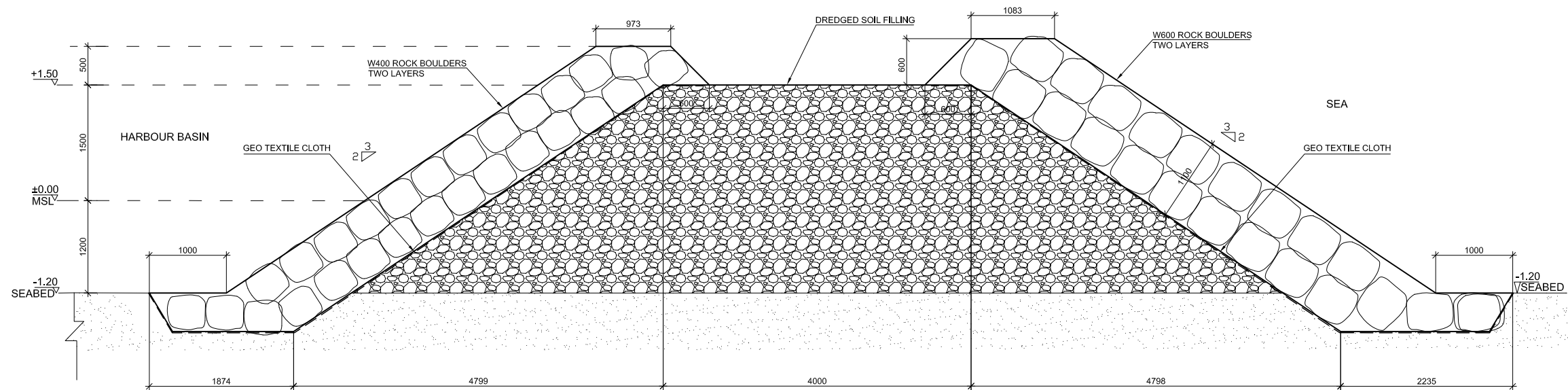
RAMP FOR LANDING CRAFTS

- NOTES:**
- 1 - ALL DIMENSIONS ARE IN MILLIMETER AND LEVELS ARE IN METER UNLESS OTHERWISE SHOWN
 - 2 - PLAIN CEMENT CONCRETE (PCC) SHALL BE OF GRADE C10 (OR 10 N/ MM² WHEN COMPRESSIVE STRENGTH AT 28 DAYS)
 - 3 - REINFORCED CEMENT CONCRETE (RCC) FOR WATER RETAINING STRUCTURE SHALL BE C35 (OR 35 N/ MM²) COMPRESSIVE STRENGTH AT 28 DAYS)
 - 4 - YIELD STRENGTH OF STEEL REINFORCEMENT SHALL BE 460 N/ MM²
 - 5 - ALL STRUCTURE CONCRETE SHALL BE FROM SULPHATE RESISTANT CEMENT

REV.	DATE	DESCRIPTION	DRAWN	CHKD.	APPRD.
REVISION					
CLIENT					
 MINISTRY OF HOUSING & INFRASTRUCTURE REPUBLIC OF MALDIVES					
CONSULTANT:					
 Al-Habshi Consultants Office Tel: 2430103 / 2433131 - Fax: 2431136 P.O.Box 27154 Safat 13132 - Kuwait					
PROJECT:					
RECONSTRUCTION OF HARBORS PHASE-2					
DRAWING TITLE:					
N.MAAFARU HARBOUR QUAY WALL DETAILS					
DESIGNED	DRAWN	CHECKED	APPROVED	SCALE	DATE
SS	JP	MS	MA	1:50	20-06-14
PROJECT No.	SHEET No.	DRAWING No.			
K-601	6 OF 6	MF-CI-05			
REV. No.	0				





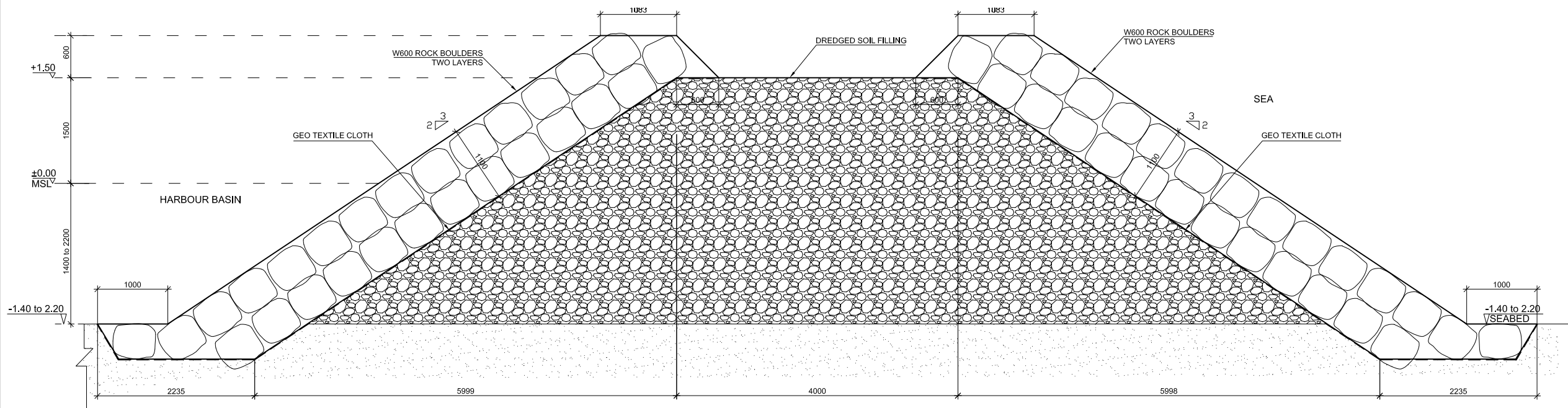
SECTION AT CHAINAGE 25m
NORTH AND SOUTH BREAKWATER



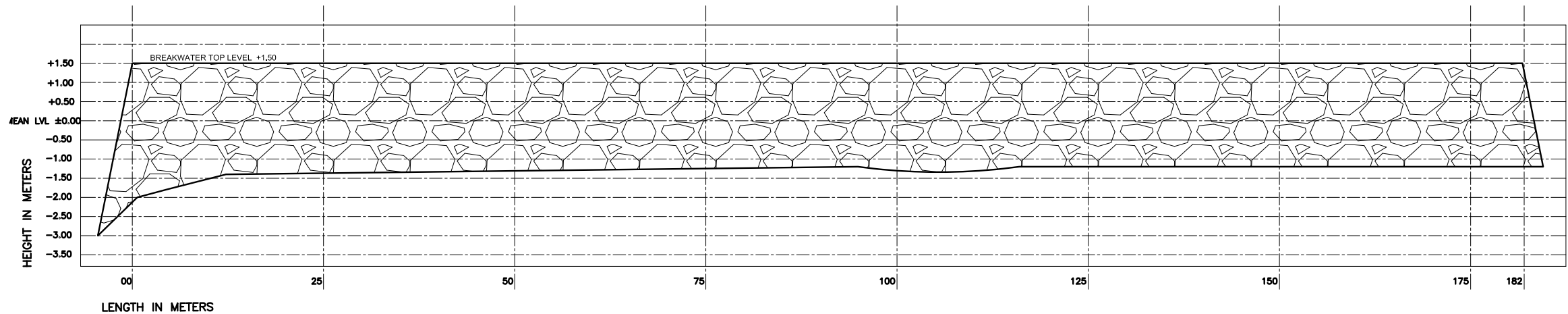
SECTION AT CHAINAGE 25m TO 182m
NORTH BREAKWATER

NOTES:

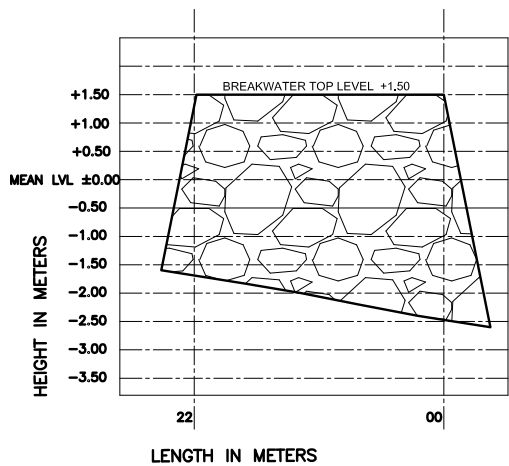
REV.	DATE	DESCRIPTION	DRAWN	CHKD.	APPRD.
REVISION					
CLIENT					
<div></div> <div>MINISTRY OF HOUSING & INFRASTRUCTURE</div> <div>REPUBLIC OF MALDIVES</div>					
CONSULTANT:					
<div><div><div>Al-Habshi Consultant</div><div></div></div><div>Al-Habshi Consultants Office</div><div>Tel.: 2430103 / 2433131 - Fax : 2431136 P.O.Box 27154 Safat 13132 - Kuwait</div></div>					
PROJECT:					
RECONSTRUCTION OF HARBORS					
PHASE-2					
DRAWING TITLE:					
N.MAAFARU HARBOUR BREAKWATER DETAILS					
DESIGNED	DRAWN	CHECKED	APPROVED	SCALE	DATE
SS	JP	MS	MA	1:50	20-06-14
PROJECT No.		SHEET No.		DRAWING No.	
K-601		1 OF 2		MF-CI-06	
REV. No.		0			



SECTION OF HEAD AT CHAINAGE 00m to 25m
NORTH AND SOUTH BREAKWATER





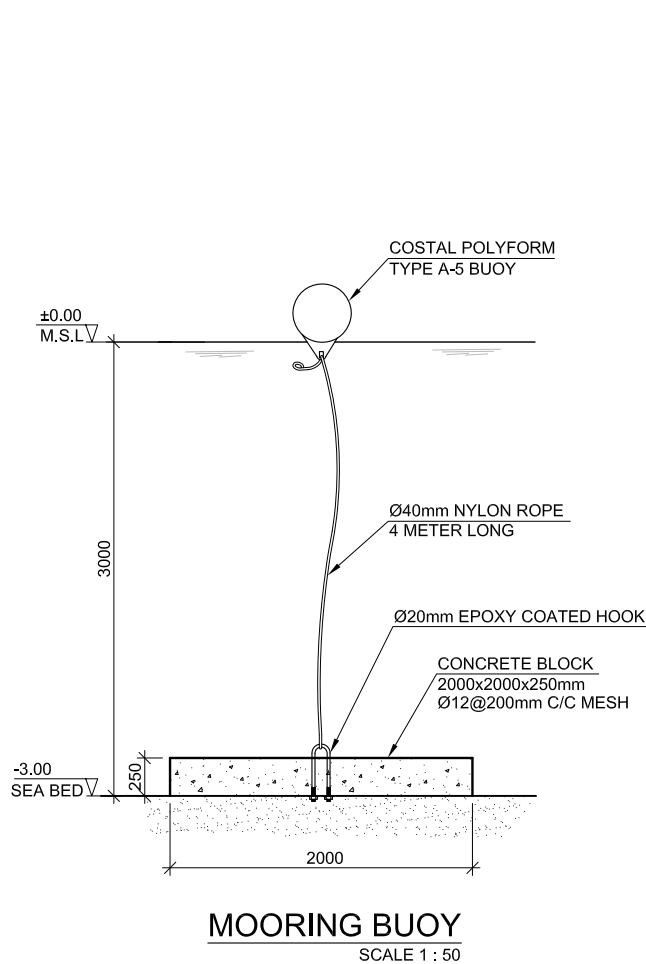
NORTH BREAKWATER PROFILE



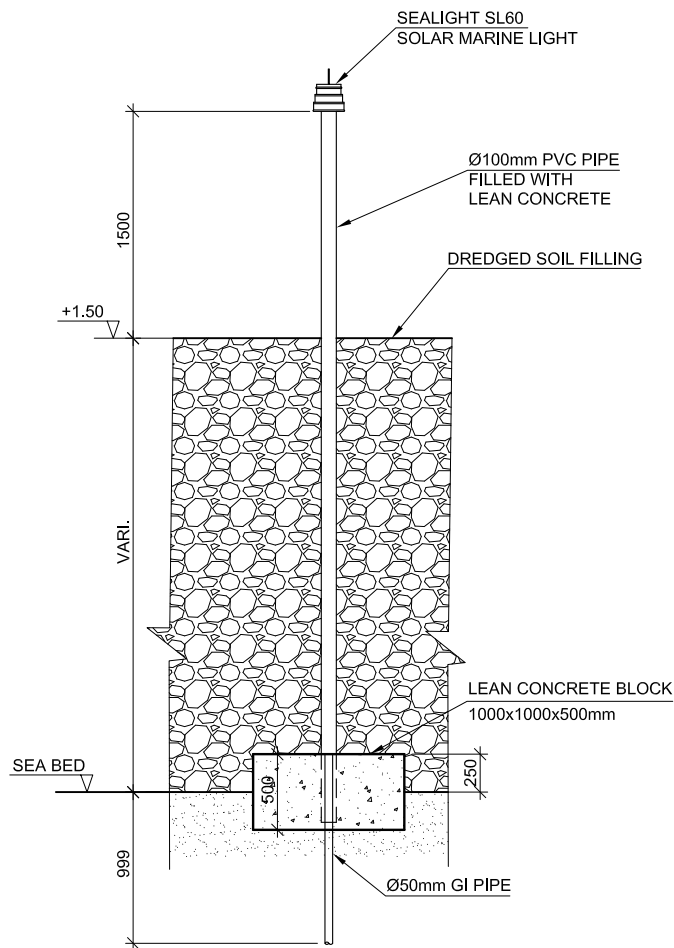
SOUTH BREAKWATER PROFILE

NOTES:

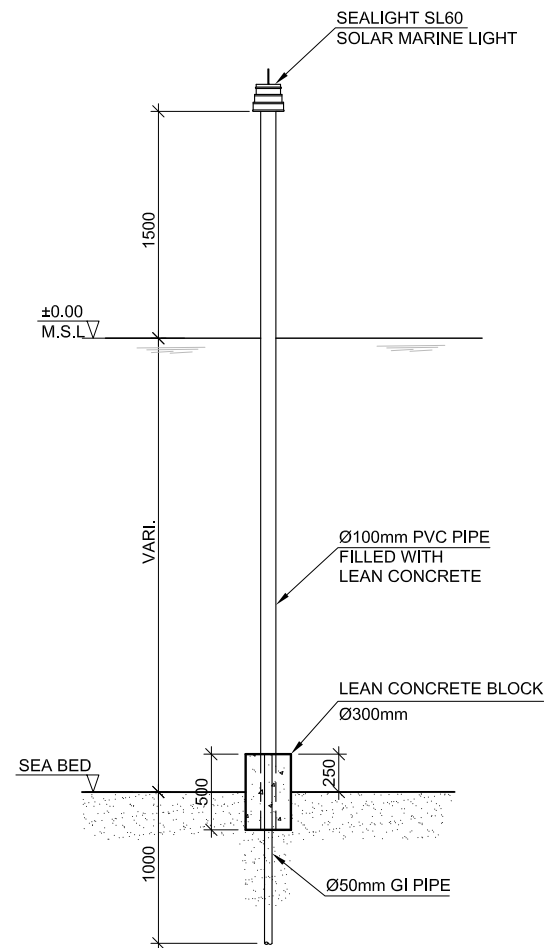
REV.	DATE	DESCRIPTION	DRAWN	CHKD.	APPRD.
REVISION					
CLIENT					
 MINISTRY OF HOUSING & INFRASTRUCTURE REPUBLIC OF MALDIVES					
CONSULTANT:					
 Al-Habshi Consultants Office Tel: 2430103 / 2433131 - Fax: 2431136 P.O.Box 27154 Safat 13132 - Kuwait					
PROJECT:					
RECONSTRUCTION OF HARBORS PHASE-2					
DRAWING TITLE:					
N.MAAFARU HARBOUR BREAKWATER DETAILS					
DESIGNED	DRAWN	CHECKED	APPROVED	SCALE	DATE
SS	AF	MS	MA	1:50	20-06-14
PROJECT No.	SHEET No.	DRAWING No.			
K-601	2 OF 2	MF-CI-06			
REV. No.	0				



MOORING BUOY
SCALE 1 : 50





NAVIGATION LIGHT INSTALATION
AT BREAKWATER HEAD
SCALE 1 : 50



NAVIGATION LIGHT INSTALATION
AT REEF
SCALE 1 : 50

NOTES:

- 1 - ALL DIMENSIONS ARE IN MILLIMETER AND LEVELS ARE IN METER UNLESS OTHERWISE SHOWN
- 2 - PLAIN CEMENT CONCRETE (PCC) SHALL BE OF GRADE C10 (OR 10 N/ MM² WHEN COMPRESSIVE STRENGTH AT 28 DAYS)
- 3 - ALL STRUCTURE CONCRETE SHALL BE FROM SULPHATE RESISTANT CEMENT

REV.	DATE	DESCRIPTION	DRAWN	CHKD.	APPRD.
REVISION					
CLIENT					
 MINISTRY OF HOUSING & INFRASTRUCTURE REPUBLIC OF MALDIVES					
CONSULTANT:					
 Al-Habshi Consultants Office Tel.: 2430103 / 2433131 - Fax : 2431136 P.O.Box 27154 Safat 13132 - Kuwait					
PROJECT:					
RECONSTRUCTION OF HARBORS PHASE-2					
DRAWING TITLE:					
N.MAAFARU HARBOUR TYPICAL DETAILS					
DESIGNED	DRAWN	CHECKED	APPROVED	SCALE	DATE
SS	JP	MS	MA	1:50	20-06-14
PROJECT No.	SHEET No.	DRAWING No.			
K-601	1 OF 1	MF-CI-07			
REV. No.	0				