

BUILDING SERVICES DRAWINGS OF

PROPOSED 04 STOREY BUILDING AT

**12 CLASSROOM BLOCK WITH OFFICE AT
HA.ATOLL EDUCATION CENTER**

For Ministry Of Education

By Epoch Associates Pvt. Ltd



EPOCH

T: +960 333 3528 **E:** info@epoch.associates **W:** www.epoch.associates
A: 3rd Floor, G. Rosary West, Husnuheena Magu, Male' Republic of Maldives

Legend

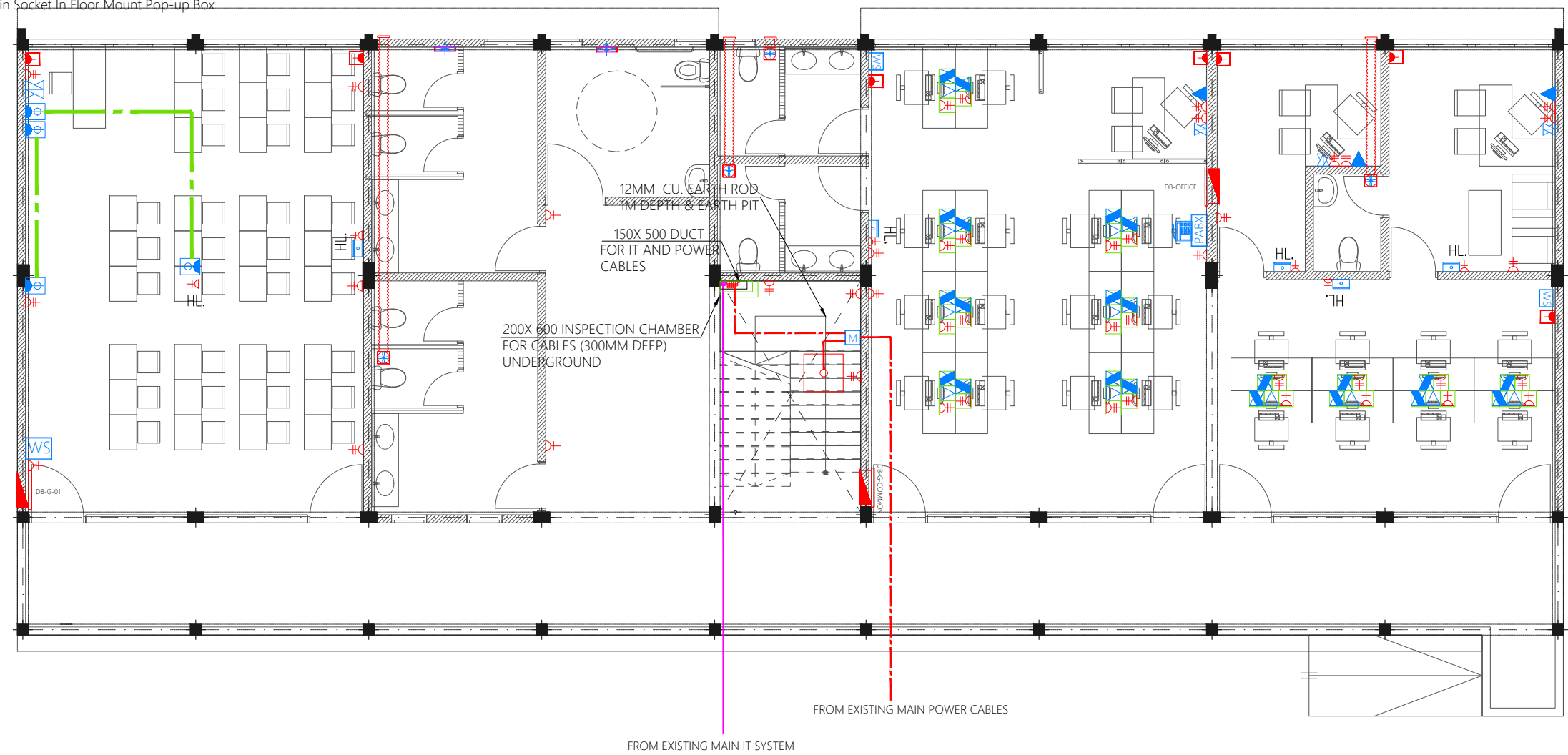
- 13A Twin Socket
- 13A Power Socket
- Distribution Board
- 15A Switched Socket @ H.L.
- HL. High Level
- Emergency Light
- WS Wall Mounted Speaker
- Electricity Meter
- Public Address System
- Private Automatic Branch Exchange (PABX)
- Computer Network Twin Outlet
- HDMI Socket
- Telephone Outlet
- Computer Network Outlet In Floor Mount Pop-up Box
- Telephone Point In Floor Mount Pop-up Box
- 13A Twin Socket In Floor Mount Pop-up Box

- 82Ø PVC Duct For Tel./Internet Cable Lead In Below Ground Slab
- Main Incoming Cable For Power In 110Ø PVC Duct Below Ground Slab

Notes: -
- All Twin Sockets At 300mm From F.F.L. Except Stated Otherwise
- All Computer, Telephone Points At 300mm From F.F.L.
- All electrical components shall be connected to respective Distribution Box in the same area as the component.
- All electrical components in common areas, corridors and staircase should be connected to Common Area DB
- Wall Speaker shall be connected to Public address system of school

Legend

- Ceiling Mounted Exhaust Fan 90m3/hr
- Wall Mounted Exhaust Fan



GROUND FLOOR POWER AND ACV LAYOUT

PROPOSED 04 STOREY BUILDING AT
**12 CLASSROOM
BLOCK AND
OFFICE,HA ATOLL
EDUCATION
CENTER**
Client:
Ministry Of Education

February 2021
Services By: **Mohamed Rassam**
Checked By:
Drawn By: **Hussain Rasheed**

EPOCH
T: +960 333 3528 ,E: info@epoch.associates
W: www.epoch.associates, A: G. Rosary West,
Husnuheenaa Magu Male' Republic of Maldives

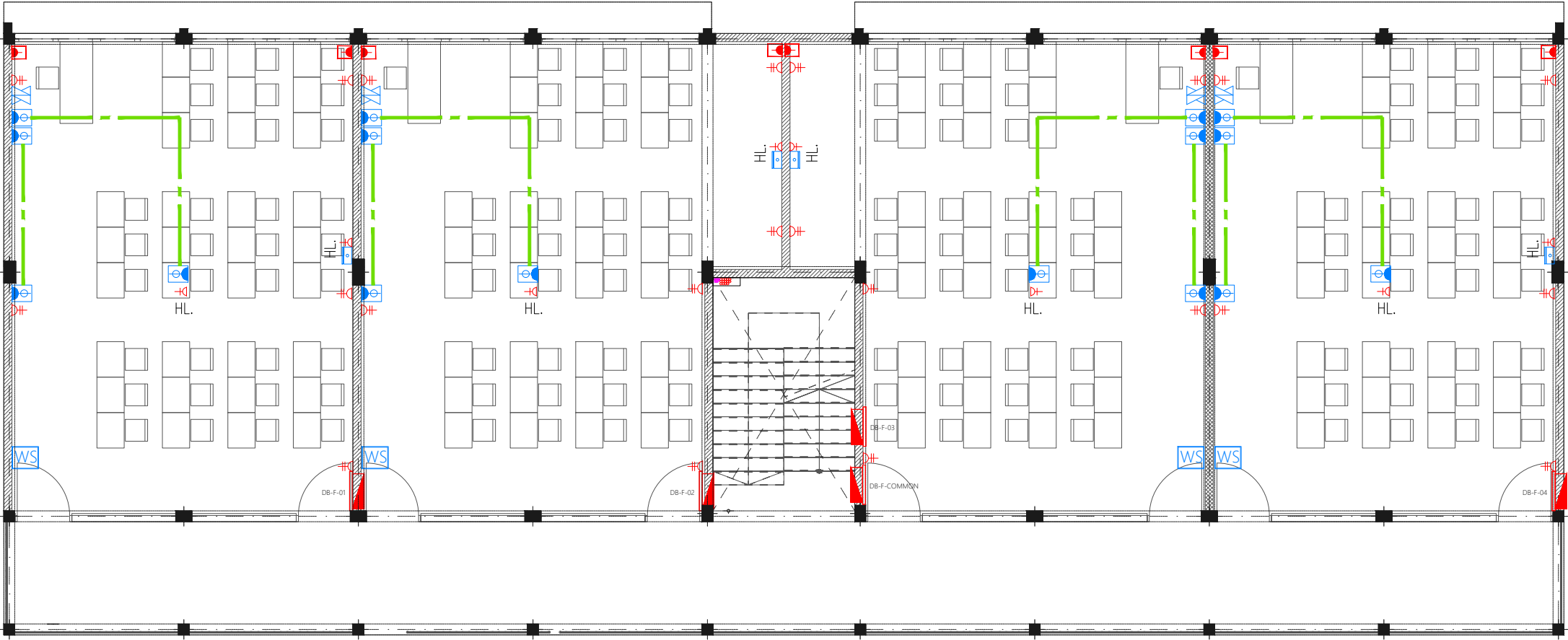
Rev: ---
Page: **PAC-01**

Legend

- 13A Twin Socket
- 13A Power Socket
- Distribution Board
- 15A Switched Socket @ H.L.
- HL. High Level
- Emergency Light
- Wall Mounted Speaker
- Computer Network Twin Outlet
- HDMI Socket

Notes: -

- All Twin Sockets At 300mm From F.F.L. Except Stated Otherwise
- All Computer, Telephone Points At 300mm From F.F.L.
- All electrical components shall be connected to respective Distribution Box in the same area as the component.
- All electrical components in common areas, corridors and staircase should be connected to Common Area DB
- Wall Speaker shall be connected to Public address system of school



FIRST FLOOR POWER AND ACV LAYOUT

PROPOSED 04 STOREY BUILDING AT
**12 CLASSROOM
BLOCK AND
OFFICE,HA ATOLL
EDUCATION
CENTER**

Client:
Ministry Of Education

February 2021

Services By: **Mohamed Rassam**
Checked By:
Drawn By: **Hussain Rasheed**



EPOCH

T: +960 333 3528 **E:** info@epoch.associates
W: www.epoch.associates, **A:** G. Rosary West,
Husnuheenaa Magu Male' Republic of Maldives

Rev:	Page:
---	PAC-02
---	---
---	---

Legend

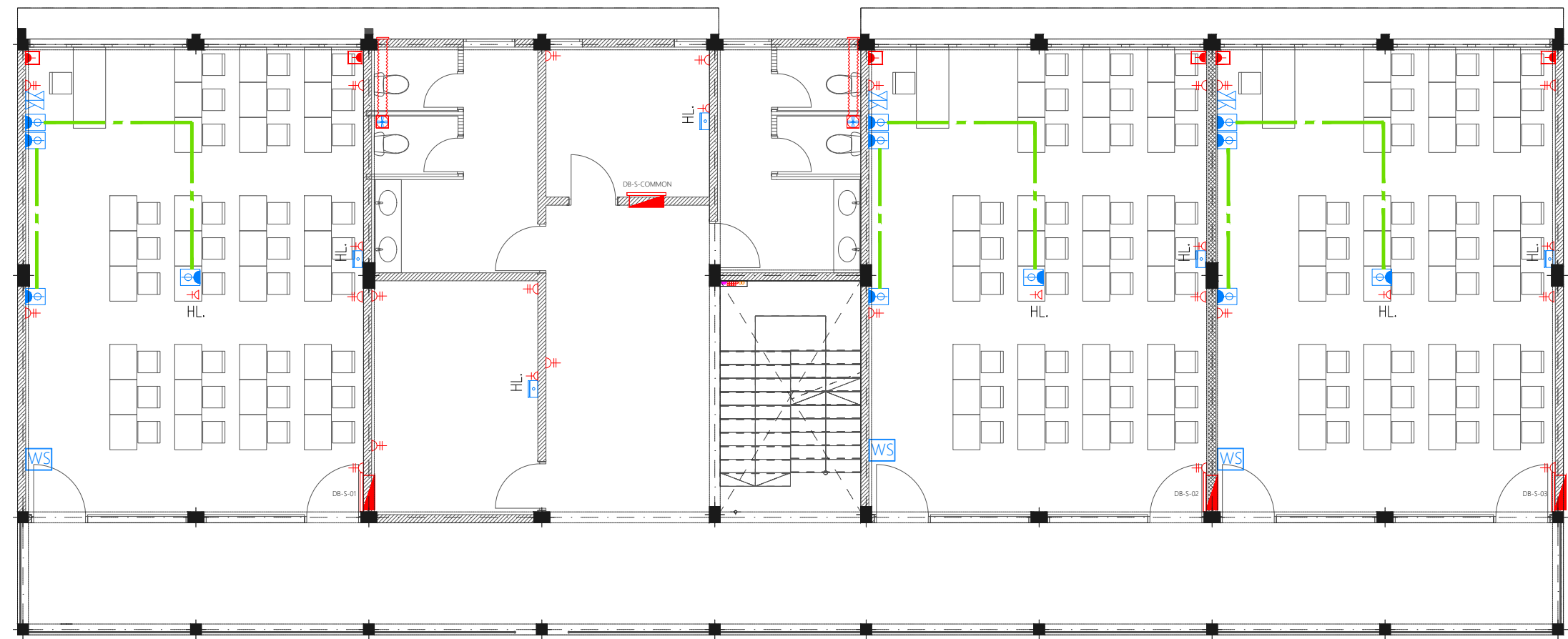
- 13A Twin Socket
- 13A Power Socket
- Distribution Board
- 15A Switched Socket @ H.L.
- HL. High Level
- Emergency Light
- WS Wall Mounted Speaker
- Computer Network Twin Outlet
- HDMI Socket

Legend

- Ceiling Mounted Exhaust Fan 90m3/hr
- Wall Mounted Exhaust Fan

Notes: -

- All Twin Sockets At 300mm From F.F.L. Except Stated Otherwise
- All Computer, Telephone Points At 300mm From F.F.L.
- All electrical components shall be connected to respective Distribution Box in the same area as the component.
- All electrical components in common areas, corridors and staircase should be connected to Common Area DB
- Wall Speaker shall be connected to Public address system of school



SECOND FLOOR POWER AND ACV LAYOUT

PROPOSED 04 STOREY BUILDING AT
**12 CLASSROOM
BLOCK AND
OFFICE,HA ATOLL
EDUCATION
CENTER**

Client:
Ministry Of Education

February 2021

Services By: **Mohamed Rassam**
Checked By:
Drawn By: **Hussain Rasheed**



EPOCH

T: +960 333 3528 , E: info@epoch.associates
W: www.epoch.associates, A: G. Rosary West,
Husnuheena Magu Male' Republic of Maldives

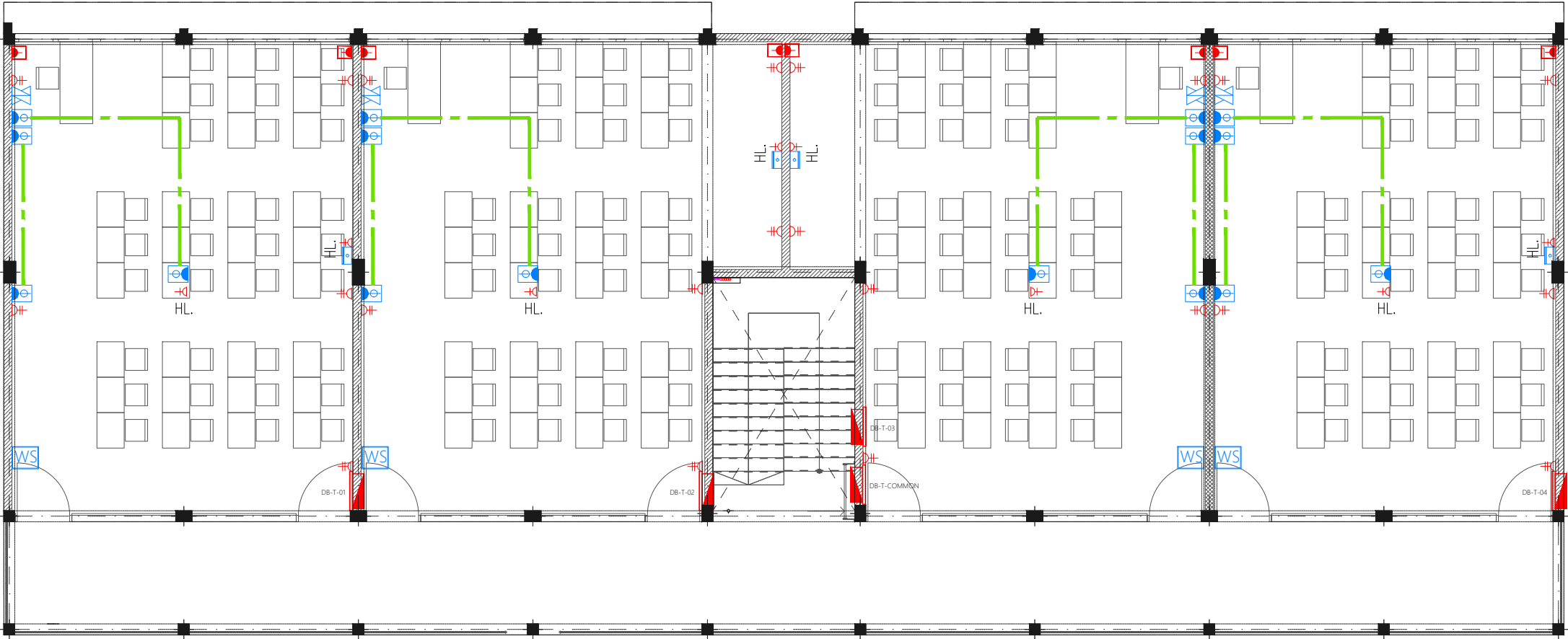
Rev: ---
Page: PAC-03

Legend

- 13A Twin Socket
- 13A Power Socket
- Distribution Board
- 15A Switched Socket @ H.L.
- HL. High Level
- Emergency Light
- WS Wall Mounted Speaker
- Computer Network Twin Outlet
- HDMI Socket

Notes: -

- All Twin Sockets At 300mm From F.F.L. Except Stated Otherwise
- All Computer, Telephone Points At 300mm From F.F.L.
- All electrical components shall be connected to respective Distribution Box in the same area as the component.
- All electrical components in common areas, corridors and staircase should be connected to Common Area DB
- Wall Speaker shall be connected to Public address system of school



THIRD FLOOR POWER AND ACV LAYOUT

PROPOSED 04 STOREY BUILDING AT
**12 CLASSROOM
BLOCK AND
OFFICE,HA ATOLL
EDUCATION
CENTER**

Client:
Ministry Of Education

February 2021

Services By: **Mohamed Rassam**
Checked By:
Drawn By: **Hussain Rasheed**













EPOCH

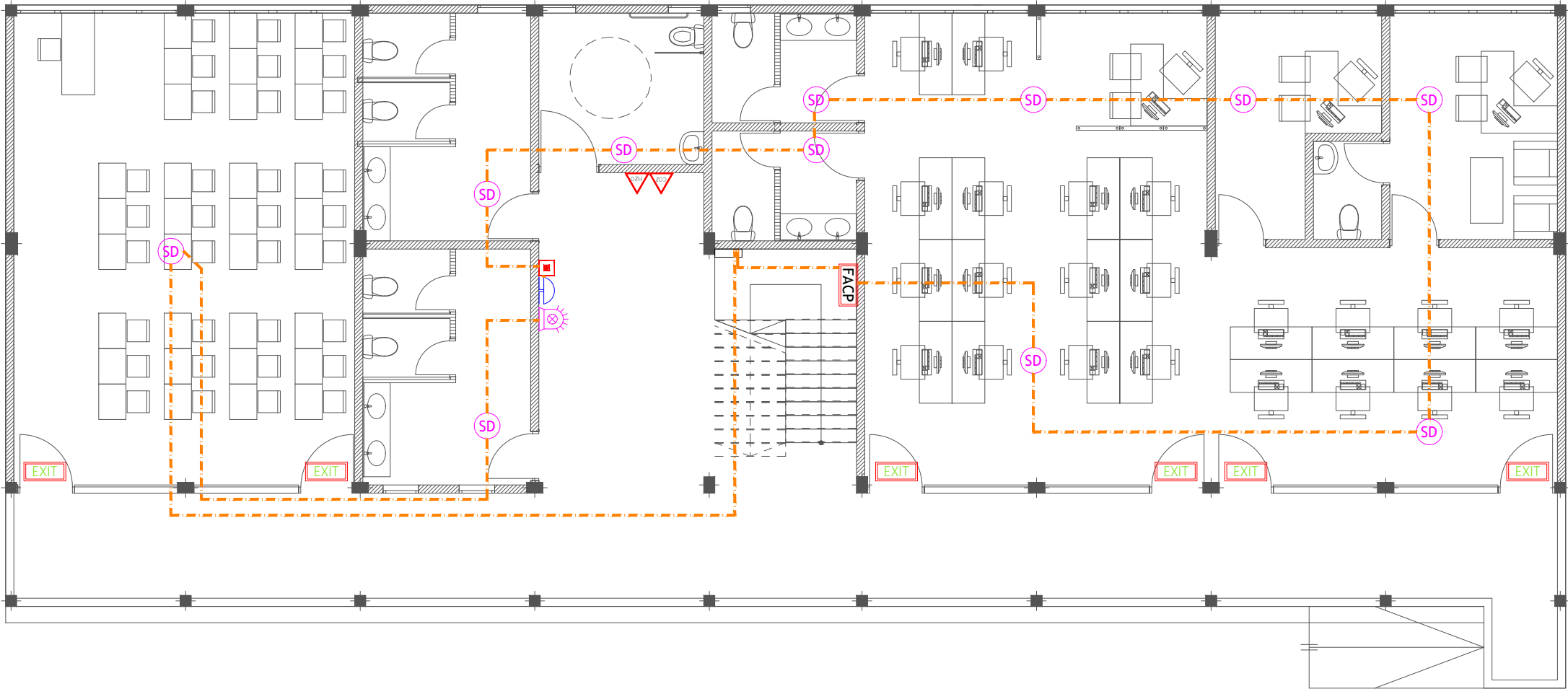
T: +960 333 3528, E: info@epoch.associates
W: www.epoch.associates, A: G. Rosary West,
Husnuheena Magu Male' Republic of Maldives

Rev: ---

Page: PAC-04

Legend

-  CO₂ Extinguisher (load: 2kg) In Polycarbonate Enclosure
-  H₂O Extinguisher (load: 9L) In Polycarbonate Enclosure
-  Manual Call Point
-  Smoke Detector
-  Heat Detector
-  Beacon
-  Sounder Bell
-  2.5mm² Fire Retardant Low Smoke (FRLS) Cables In FRLS Conduits
-  Exit Sign
-  Fire Alarm Control Panel



GROUND FLOOR FDP LAYOUT
1:100

PROPOSED 04 STOREY BUILDING AT
**12 CLASSROOM
BLOCK AND
OFFICE,HA ATOLL
EDUCATION
CENTER**
Client:
Ministry Of Education

February 2021

Services By: **Mohamed Rassam**
Checked By:
Drawn By: **Hussain Rasheed**













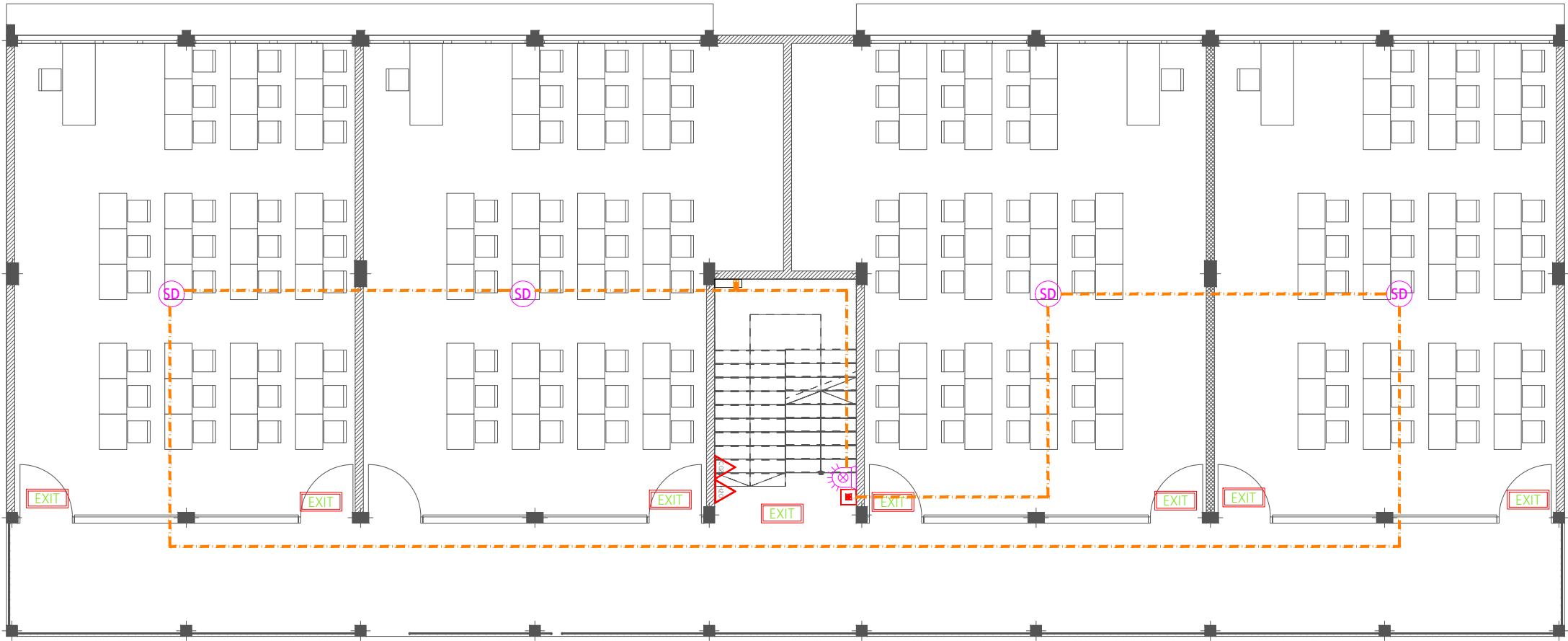
EPOCH

T: +960 333 3528 , E: info@epoch.associates
W: www.epoch.associates, A: G. Rosary West,
Husnuheenaa Magu Male' Republic of Maldives

Rev:	Page:
---	FDP -01
---	---
---	---

Legend

-  CO₂ Extinguisher (load: 2kg) In Polycarbonate Enclosure
-  H₂O Extinguisher (load: 9L) In Polycarbonate Enclosure
-  Manual Call Point
-  Smoke Detector
-  Heat Detector
-  Beacon
-  Sounder Bell
-  2.5mm² Fire Retardant Low Smoke (FRLS) Cables In FRLS Conduits
-  Exit Sign
-  Fire Alarm Control Panel



FIRST FLOOR FDP LAYOUT
1:100

PROPOSED 04 STOREY BUILDING AT
**12 CLASSROOM
BLOCK AND
OFFICE,HA ATOLL
EDUCATION
CENTER**
Client:
Ministry Of Education

February 2021











Services By: **Mohamed Rassam**
Checked By:
Drawn By: **Hussain Rasheed**

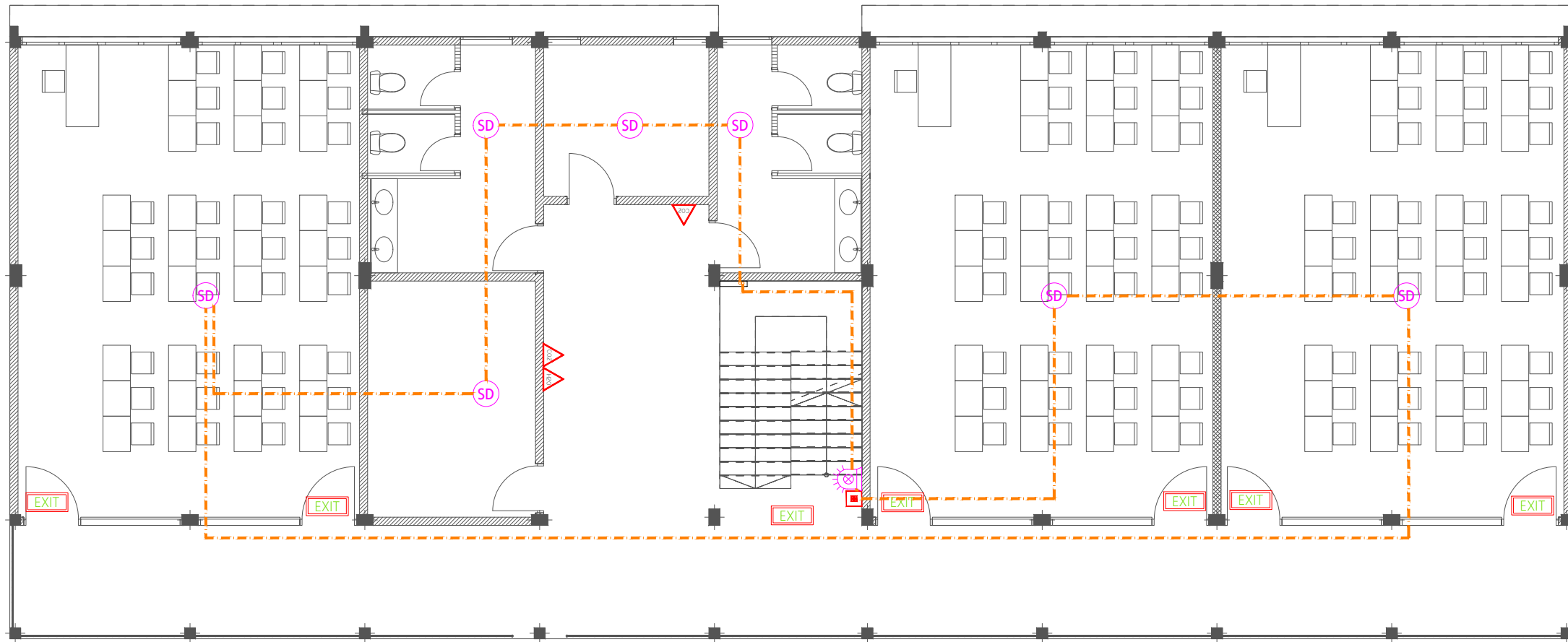


T: +960 333 3528 , E: info@epoch.associates
W: www.epoch.associates, A: G. Rosary West,
Husnuheenaa Magu Male' Republic of Maldives

Rev:	Page:
---	FDP -02

Legend

-  CO₂ Extinguisher (load: 2kg) In Polycarbonate Enclosure
-  H₂O Extinguisher (load: 9L) In Polycarbonate Enclosure
-  Manual Call Point
-  Smoke Detector
-  Heat Detector
-  Beacon
-  Sounder Bell
-  2.5mm² Fire Retardant Low Smoke (FRLS) Cables In FRLS Conduits
-  Exit Sign
-  Fire Alarm Control Panel



PROPOSED 04 STOREY BUILDING AT
**12 CLASSROOM
BLOCK AND
OFFICE,HA ATOLL
EDUCATION
CENTER**

Client:
Ministry Of Education

February 2021

Services By: **Mohamed Rassam**
Checked By:
Drawn By: **Hussain Rasheed**



EPOCH











T: +960 333 3528, E: info@epoch.associates
W: www.epoch.associates, A: G. Rosary West,
Husnuheena Magu Male' Republic of Maldives

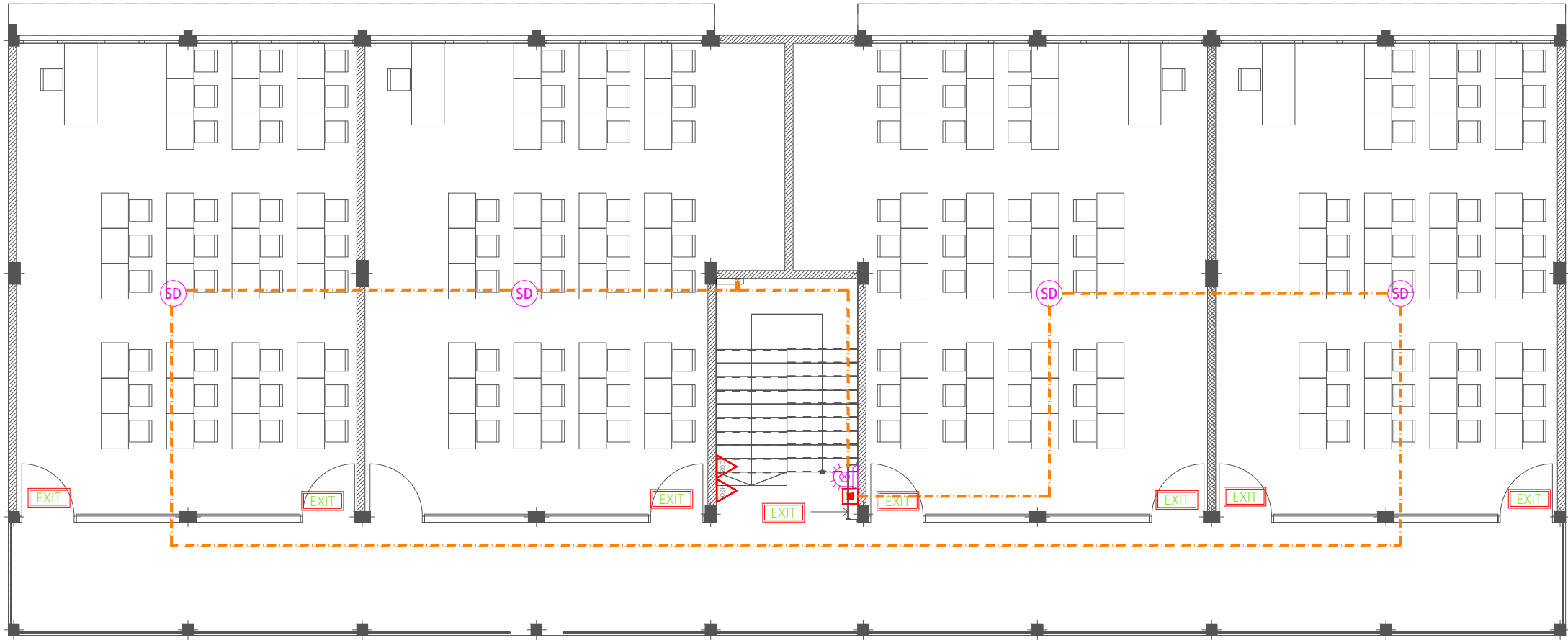
Rev:	Page:
---	FDP -03

SECOND FLOOR FDP LAYOUT

1:100

Legend

-  CO₂ Extinguisher (load: 2kg) In Polycarbonate Enclosure
-  H₂O Extinguisher (load: 9L) In Polycarbonate Enclosure
-  Manual Call Point
-  Smoke Detector
-  Heat Detector
-  Beacon
-  Sounder Bell
-  2.5mm² Fire Retardant Low Smoke (FRLS) Cables In FRLS Conduits
-  Exit Sign
-  Fire Alarm Control Panel



THIRD FLOOR FDP LAYOUT
1:100

PROPOSED 04 STOREY BUILDING AT
**12 CLASSROOM
BLOCK AND
OFFICE,HA ATOLL
EDUCATION
CENTER**
Client:
Ministry Of Education

February 2021

Services By: Mohamed Rassam
Checked By:
Drawn By: Hussain Rasheed














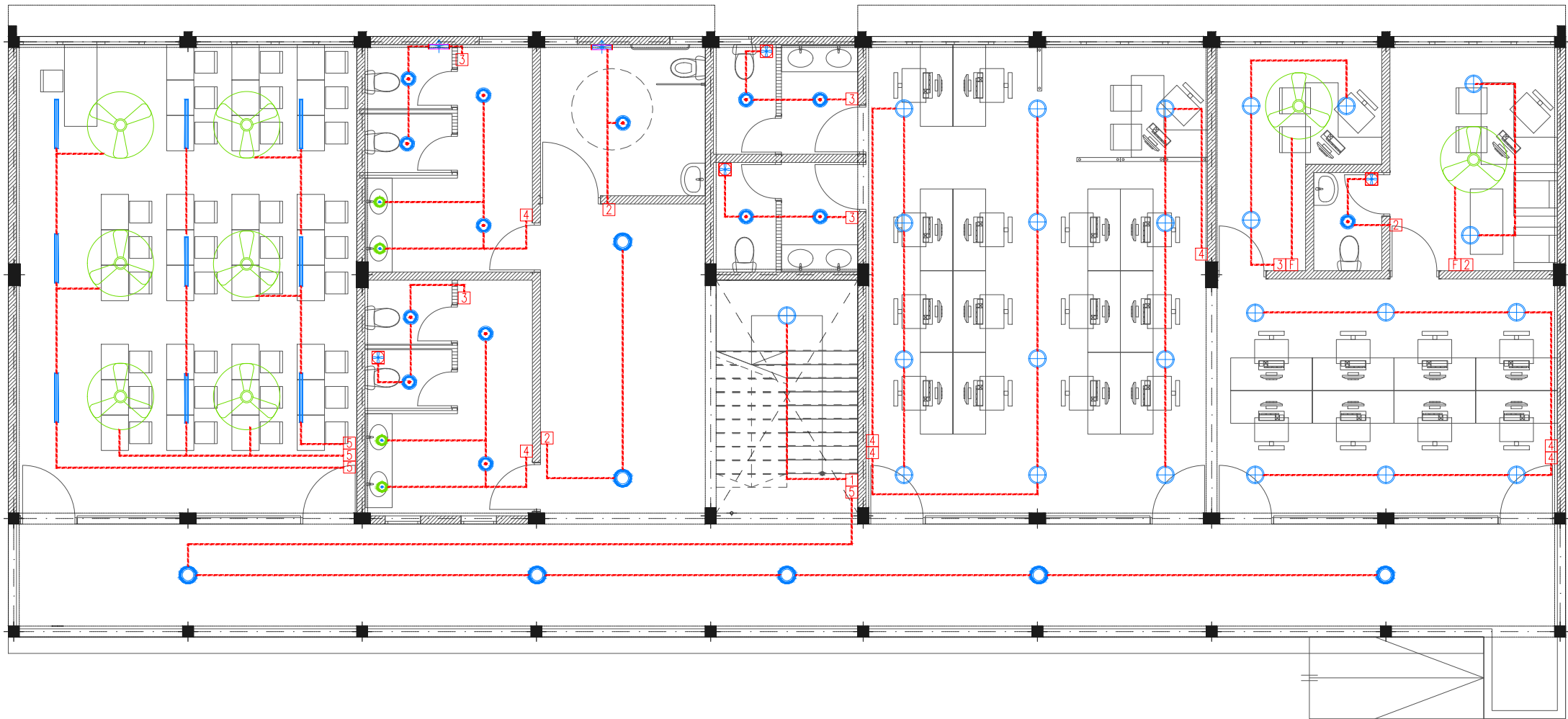
EPOCH

T: +960 333 3528 , E: info@epoch.associates
W: www.epoch.associates, A: G. Rosary West,
Husnuheena Magu Male' Republic of Maldives

Rev:	Page:
---	FDP -04
---	---
---	---

Legend

-  Ceiling Light (18W)
-  Ceiling Light (12W)
-  Recessed Ceiling Light (12W)
-  Ceiling Down Light (18W) - Weather Proof
-  Weather Proof Wall Light IP65 (40W) - For Compound Lighting
-  3 Ft Led Tube Light
-  Ceiling Recessed Spot Light (3W)
-  Light Switch (1 Gang - 5 Gang)
-  Ceiling Fan Switch With Controller
-  False Ceiling
-  42" To 48" Ceiling Fan



PROPOSED 04 STOREY BUILDING AT
**12 CLASSROOM
BLOCK AND
OFFICE,HA ATOLL
EDUCATION
CENTER**

Client:
Ministry Of Education

February 2021

Services By: **Mohamed Rassam**
Checked By:
Drawn By: **Hussain Rasheed**



EPOCH

T: +960 333 3528, E: info@epoch.associates
W: www.epoch.associates, A: G. Rosary West,
Husnuheena Magu Male' Republic of Maldives

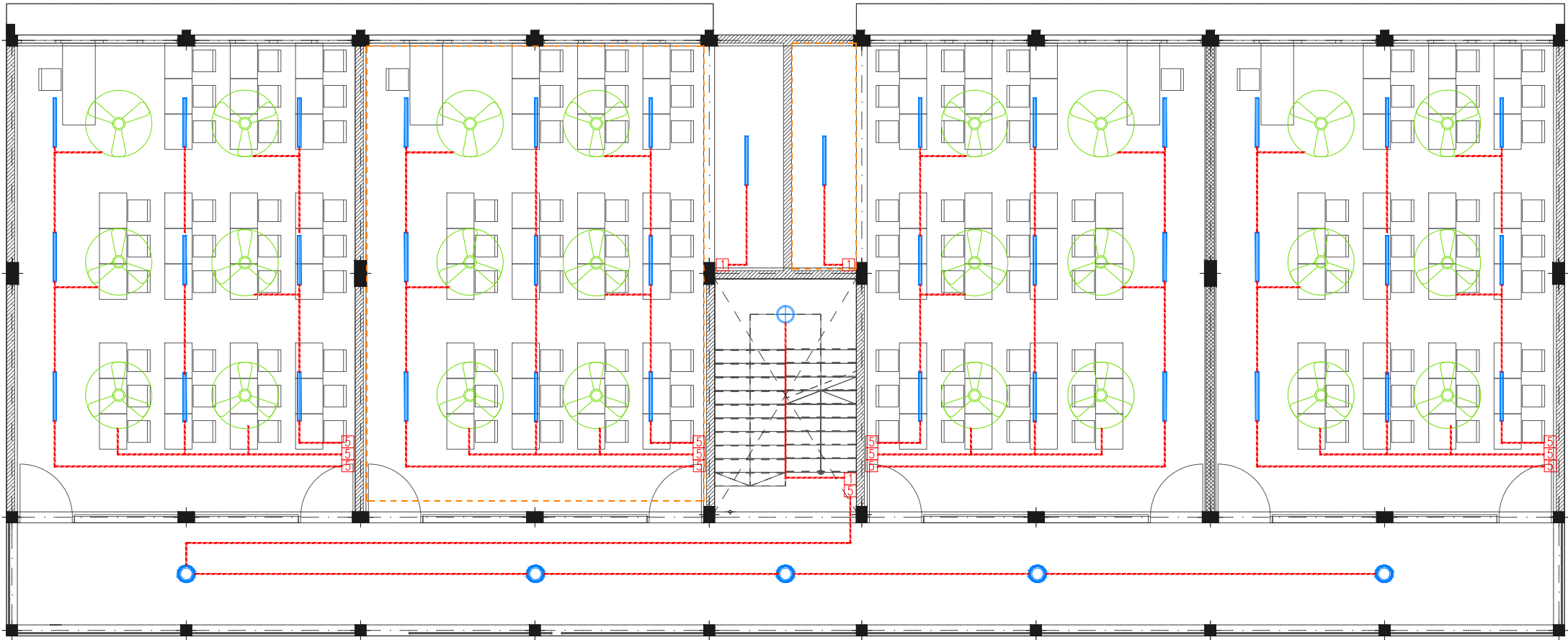
Rev:	Page:
---	EL -01

GROUND FLOOR LIGHTING LAYOUT

1:100

Legend

- Ceiling Light (18W)
- Ceiling Light (12W)
- Recessed Ceiling Light (12W)
- Ceiling Down Light (18W) - Weather Proof
- Weather Proof Wall Light IP65 (40W) - For Compound Lighting
- 3 Ft Led Tube Light
- Ceiling Recessed Spot Light (3W)
- Light Switch (1 Gang - 5 Gang)
- Ceiling Fan Switch With Controller
- False Ceiling
- 42" To 48" Ceiling Fan



PROPOSED 04 STOREY BUILDING AT
**12 CLASSROOM
BLOCK AND
OFFICE,HA ATOLL
EDUCATION
CENTER**
Client:
Ministry Of Education

February 2021

Services By: **Mohamed Rassam**
Checked By:
Drawn By: **Hussain Rasheed**








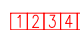




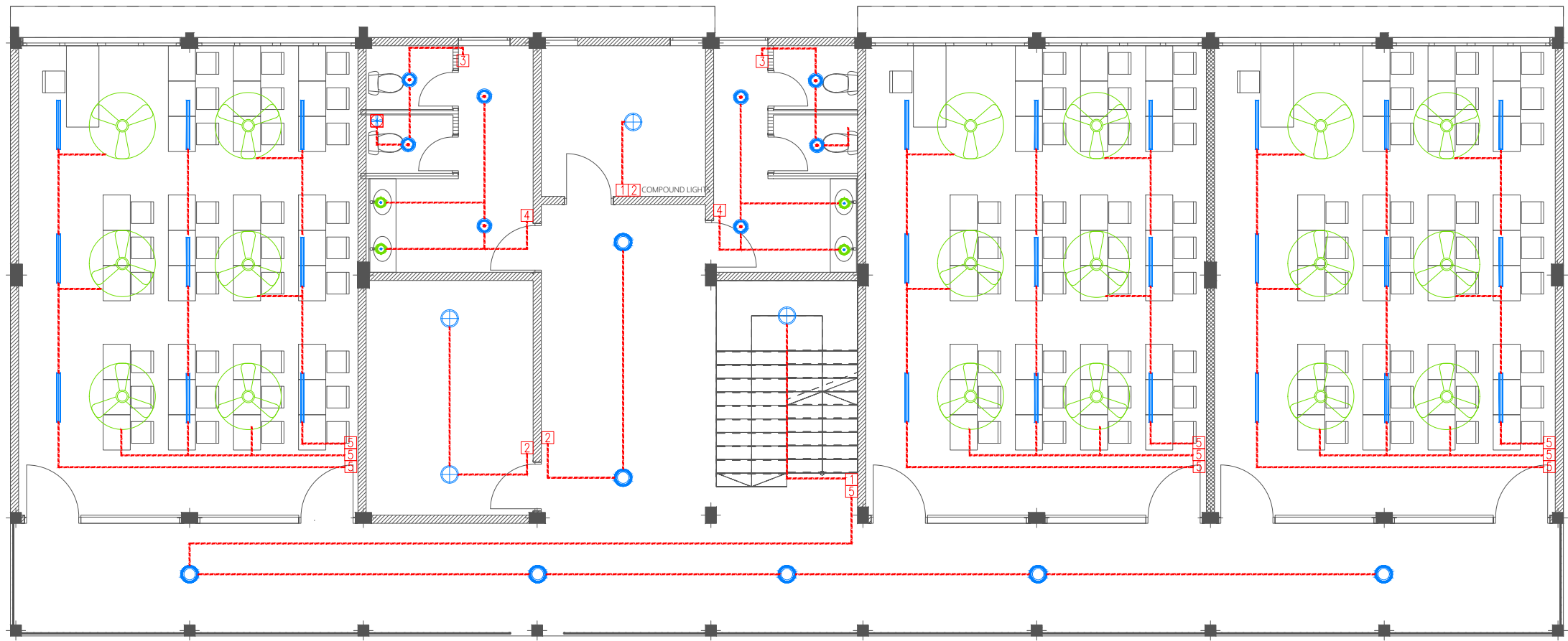
T: +960 333 3528, E: info@epoch.associates
W: www.epoch.associates, A: G. Rosary West,
Husnuheena Magu Male' Republic of Maldives

Rev:	Page:
---	EL -02

FIRST FLOOR LIGHTING LAYOUT
1:100

Legend

-  Ceiling Light (18W)
-  Ceiling Light (12W)
-  Recessed Ceiling Light (12W)
-  Ceiling Down Light (18W) - Weather Proof
-  Weather Proof Wall Light IP65 (40W) - For Compound Lighting
-  3 Ft Led Tube Light
-  Ceiling Recessed Spot Light (3W)
-  Light Switch (1 Gang - 5 Gang)
-  Ceiling Fan Switch With Controller
-  42" To 48" Ceiling Fan



SECOND FLOOR LIGHTING LAYOUT

PROPOSED 04 STOREY BUILDING AT
**12 CLASSROOM
BLOCK AND
OFFICE,HA ATOLL
EDUCATION
CENTER**
Client:
Ministry Of Education

February 2021

Services By: **Mohamed Rassam**
Checked By:
Drawn By: **Hussain Rasheed**













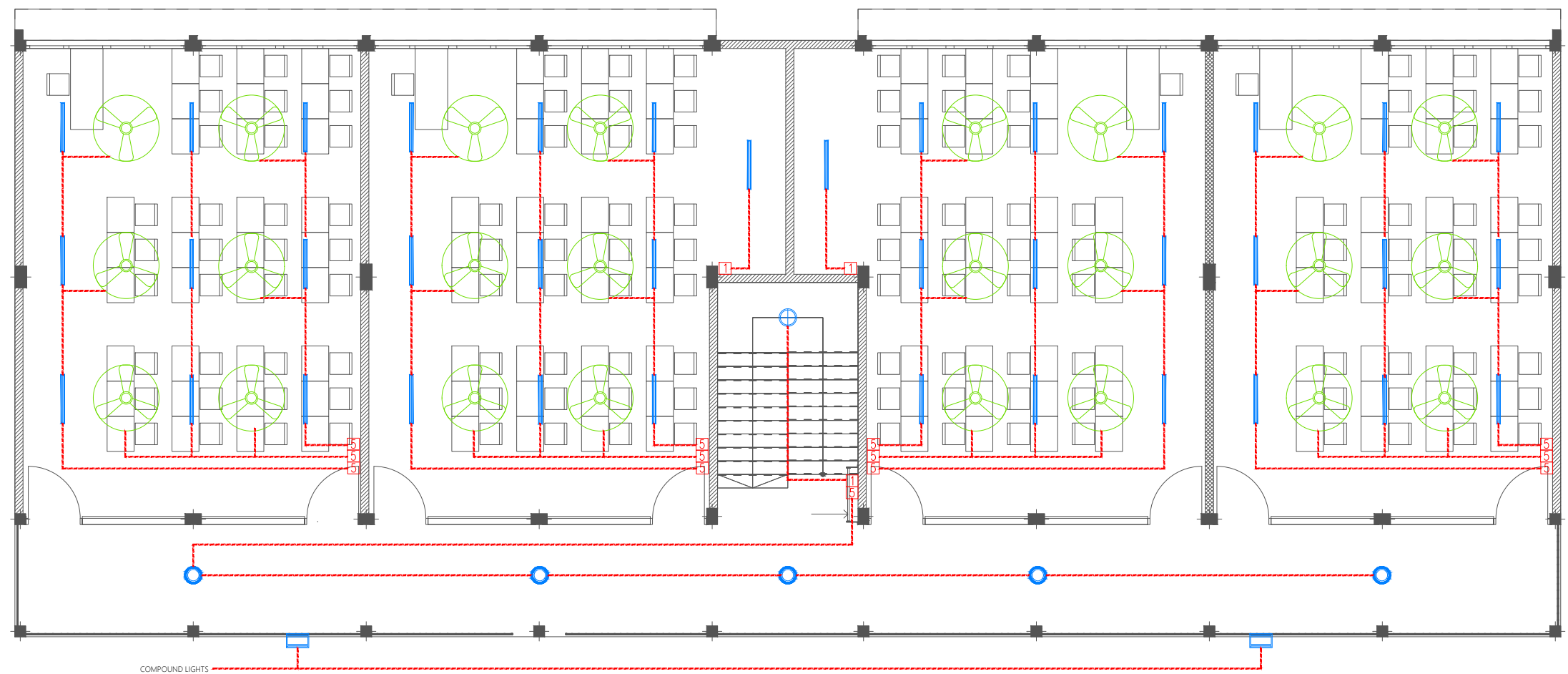
EPOCH

T: +960 333 3528, E: info@epoch.associates
W: www.epoch.associates, A: G. Rosary West,
Husnuheena Magu Male' Republic of Maldives

Rev:	Page:
---	EL -03

Legend

-  Ceiling Light (18W)
-  Ceiling Light (12W)
-  Recessed Ceiling Light (12W)
-  Ceiling Down Light (18W) - Weather Proof
-  Weather Proof Wall Light IP65 (40W) - For Compound Lighting
-  3 Ft Led Tube Light
-  Ceiling Recessed Spot Light (3W)
-  Light Switch (1 Gang - 5 Gang)
-  Ceiling Fan Switch With Controller
-  42" To 48" Ceiling Fan



PROPOSED 04 STOREY BUILDING AT
**12 CLASSROOM
BLOCK AND
OFFICE,HA ATOLL
EDUCATION
CENTER**
Client:
Ministry Of Education

February 2021

Services By: **Mohamed Rassam**
Checked By:
Drawn By: **Hussain Rasheed**



T: +960 333 3528, E: info@epoch.associates
W: www.epoch.associates, A: G. Rosary West,
Husnuheena Magu Male' Republic of Maldives

Rev: -----

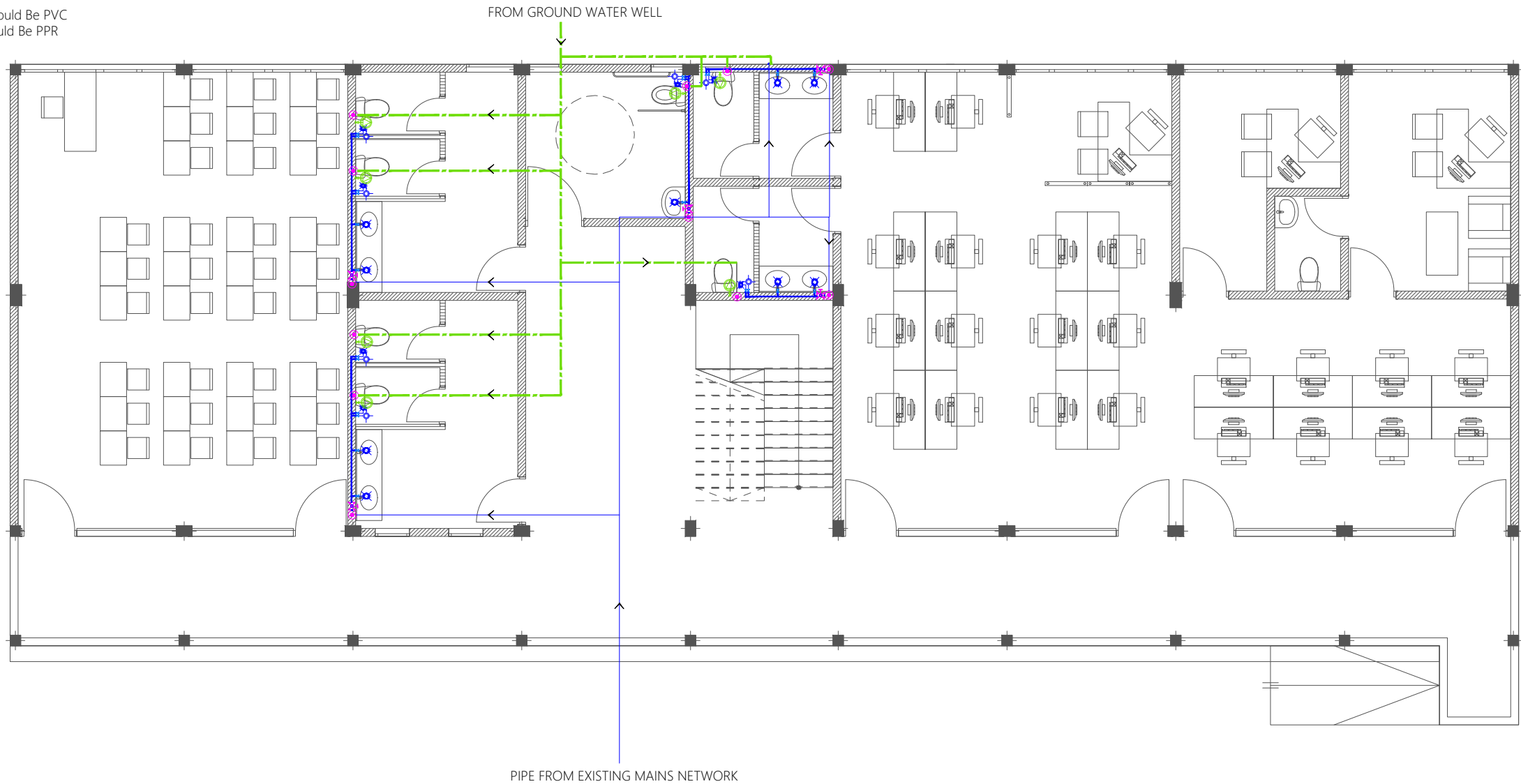
Page: EL -04

Legend

- 16Ø Cold Water Supply To Basin Faucet
- 16Ø Cold Water Supply To Bidet Shower
- 16Ø Cold Water Supply To Cistern
- Gate Valve
- Rise In Wall
- Drop In Wall
- Angle Valve with cap for Ground Water Supply
- 25Ø Cold Water Supply Pipes Running Underground
- 20Ø Cold Water Supply Pipes Running In Wall
- 20Ø Cold Water Supply Pipes Running Above False Ceiling
- 20Ø Cold Water Supply Pipes Running Underground
- 25Ø Ground Water Supply Pipes Running Above False Ceiling

Notes: -

- All Cold Water Pipes Should Be PVC
- SII Hot Water Pipes Should Be PPR



GROUND FLOOR PLUMBING LAYOUT

1:100

PROPOSED 04 STOREY BUILDING AT
**12 CLASSROOM
BLOCK AND
OFFICE,HA ATOLL
EDUCATION
CENTER**

Client:
Ministry Of Education

February 2021

Services By: **Mohamed Rassam**
Checked By:
Drawn By: **Hussain Rasheed**



EPOCH

T: +960 333 3528, E: info@epoch.associates
W: www.epoch.associates, A: G. Rosary West,
Husnuheena Magu Male' Republic of Maldives

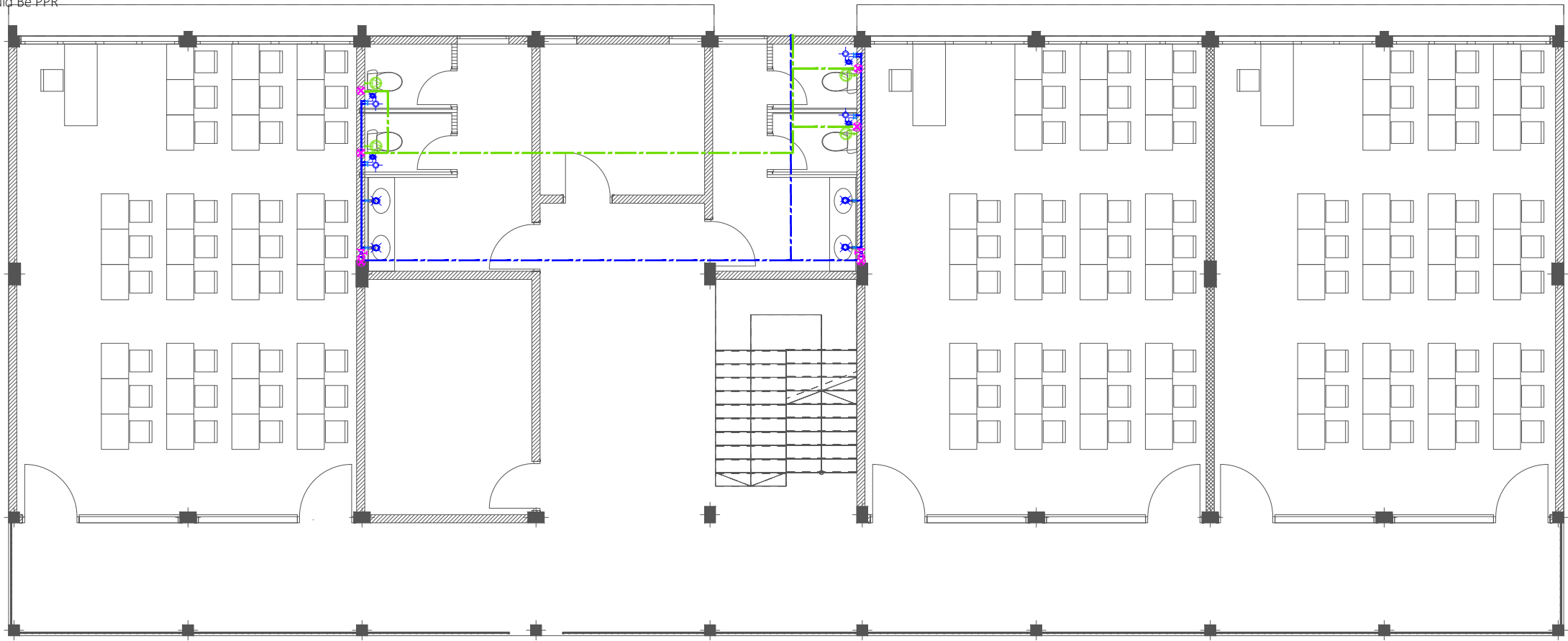
Rev:	Page:
---	PL- 01
---	---
---	---

Legend

- 16Ø Cold Water Supply To Basin Faucet
- 16Ø Cold Water Supply To Bidet Shower
- 16Ø Cold Water Supply To Cistern
- Gate Valve
- Rise In Wall
- Drop In Wall
- Angle Valve with cap for Ground Water Supply
- 25Ø Cold Water Supply Pipes Running Underground
- 20Ø Cold Water Supply Pipes Running In Wall
- 20Ø Cold Water Supply Pipes Running Above False Ceiling
- 20Ø Cold Water Supply Pipes Running Underground
- 25Ø Ground Water Supply Pipes Running Above False Ceiling

Notes: -

- All Cold Water Pipes Should Be PVC
- SII Hot Water Pipes Should Be PPR



SECOND FLOOR PLUMBING LAYOUT

1:100

PROPOSED 04 STOREY BUILDING AT
**12 CLASSROOM
BLOCK AND
OFFICE,HA ATOLL
EDUCATION
CENTER**

Client:
Ministry Of Education

February 2021

Services By: **Mohamed Rassam**
Checked By:
Drawn By: **Hussain Rasheed**



EPOCH

T: +960 333 3528 **E:** info@epoch.associates
W: www.epoch.associates, **A:** G. Rosary West,
Husnuheenaa Magu Male' Republic of Maldives

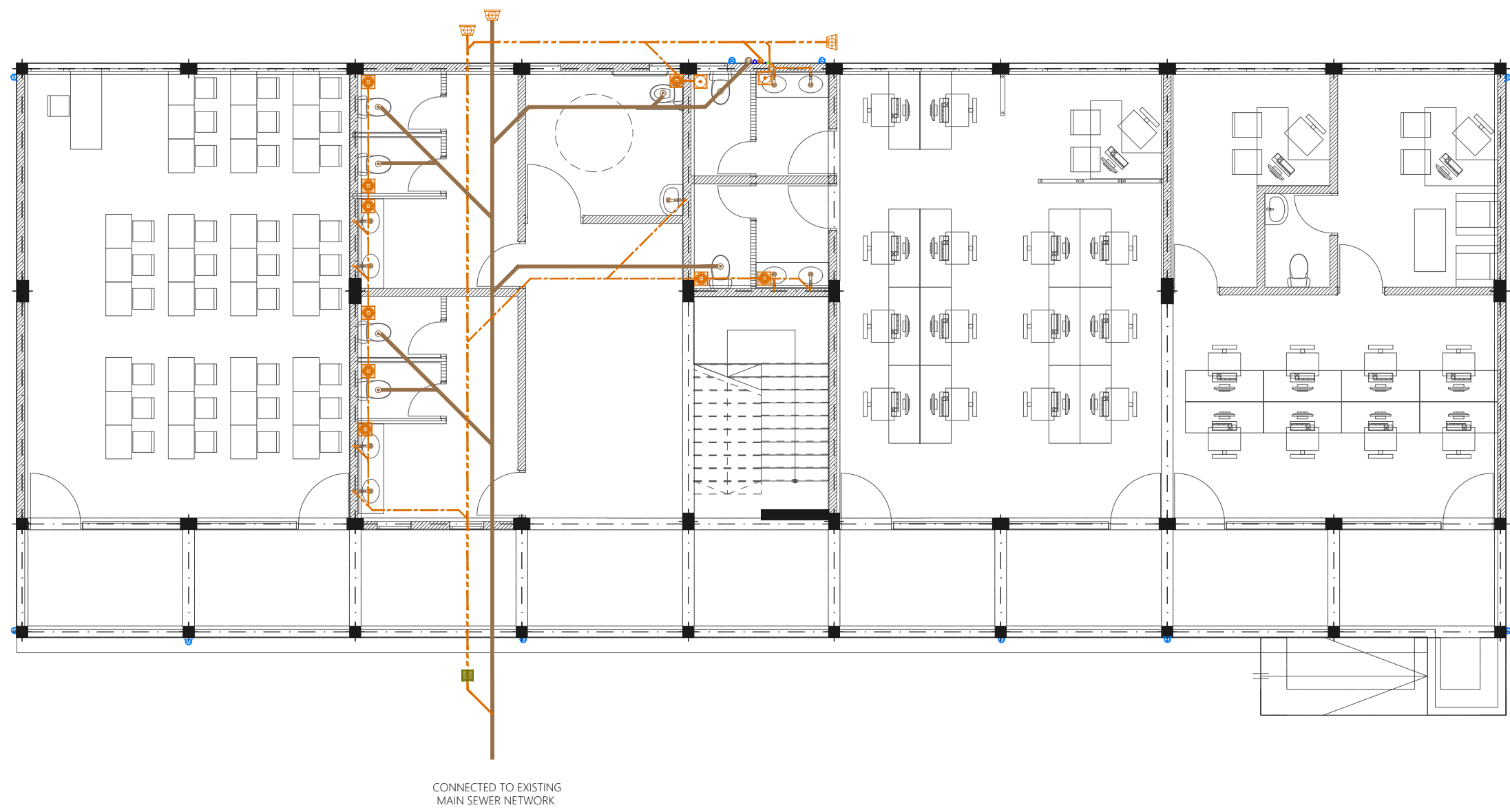
Rev:	Page:
---	PL-02

- Legend
- Floor Drain
 - Floor Gully
 - 110Ø Soil Pipe (uPVC Pipe)
 - 110Ø Soil Vent Pipe (uPVC Pipe)
 - 82Ø Waste Pipe (uPVC Pipe)
 - 82Ø Waste Vent Pipe (uPVC Pipe)
 - 40Ø Waste Pipe (uPVC Pipe)
 - 63Ø Manhole Vent Pipe (uPVC Pipe)
 - 110Ø Rain Water Pipes (uPVC Pipe)
 - 110Ø Rainwater Outlet Perforated Cowl
 - Gully Trap
 - Clean Out Point
 - Bottle Trap

Notes: -

-All Drainage Pipes Should Have At A Slope Of 1/150

-All Floor Drains Should Have 'P' Traps



GROUND FLOOR DRAINAGE LAYOUT

1:100


PROPOSED 04 STOREY BUILDING AT

**12 CLASSROOM
BLOCK AND
OFFICE,HA ATOLL
EDUCATION
CENTER**

Client:
Ministry Of Education

February 2021

Services By: **Mohamed Rassam**
Checked By:
Drawn By: **Hussain Rasheed**


EPOCH

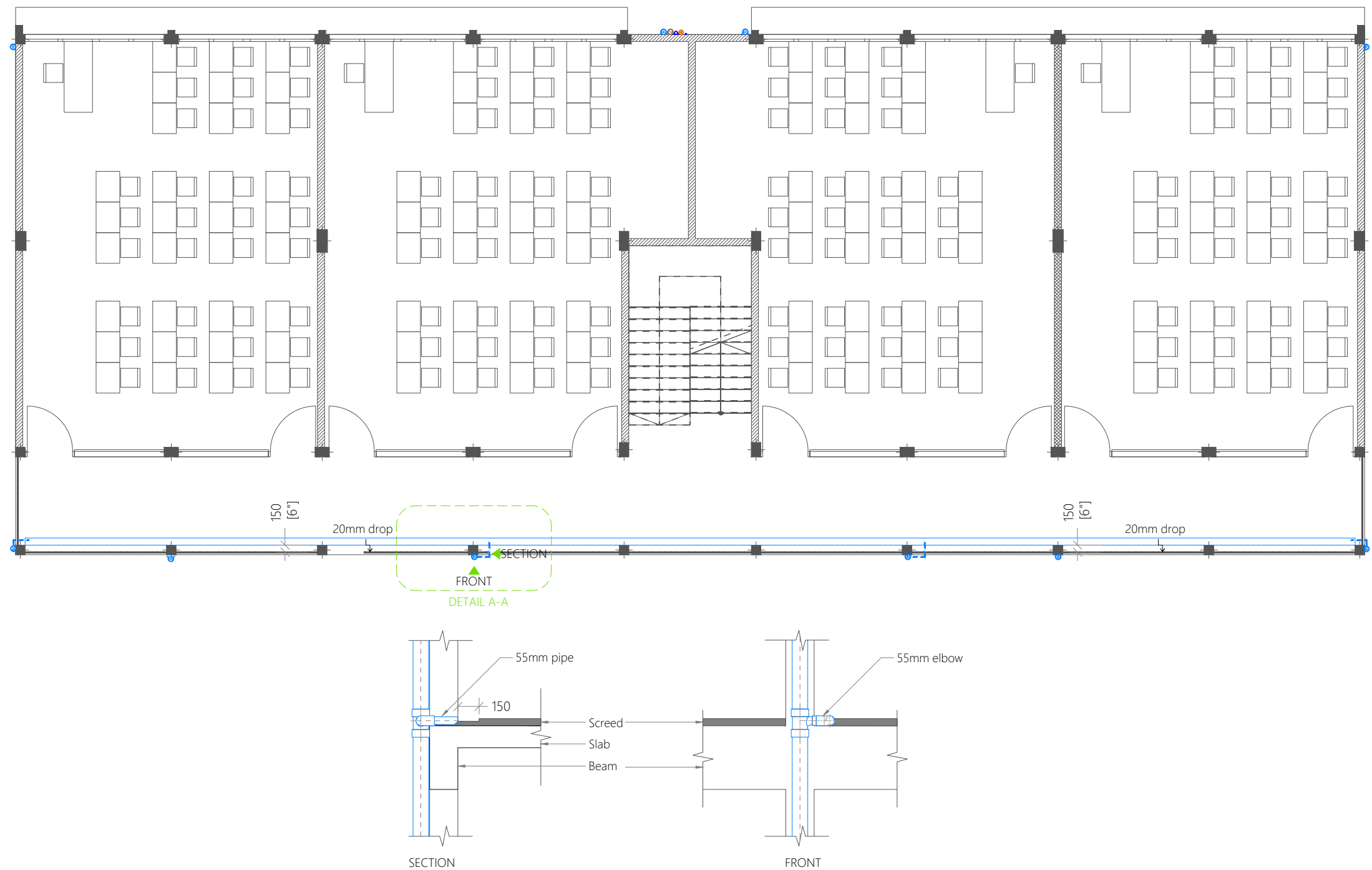
T: +960 333 3528, E: info@epoch.associates
W: www.epoch.associates, A: G. Rosary West,
Husnuheena Magu Male' Republic of Maldives

Rev:	Page:
---	DR- 01

- Legend
- Floor Drain
 - Floor Gully
 - 110Ø Soil Pipe (uPVC Pipe)
 - 110Ø Soil Vent Pipe (uPVC Pipe)
 - 82Ø Waste Pipe (uPVC Pipe)
 - 82Ø Waste Vent Pipe (uPVC Pipe)
 - 40Ø Waste Pipe (uPVC Pipe)
 - 63Ø Manhole Vent Pipe (uPVC Pipe)
 - 110Ø Rain Water Pipes (uPVC Pipe)
 - 110Ø Rainwater Outlet Perforated Cowl
 - Gully Trap
 - Clean Out Point
 - Bottle Trap

Notes: -

- All Drainage Pipes Should Have At A Slope Of 1/150
- All Floor Drains Should Have 'P' Traps



DETAIL A-A

FIRST FLOOR DRAINAGE LAYOUT

1:100

PROPOSED 04 STOREY BUILDING AT 12 CLASSROOM BLOCK AND OFFICE,HA ATOLL EDUCATION CENTER

Client:
Ministry Of Education

February 2021

Services By: Mohamed Rassam
Checked By:
Drawn By: Hussain Rasheed










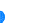





EPOCH

T: +960 333 3528, E: info@epoch.associates
W: www.epoch.associates, A: G. Rosary West,
Husnuheenaa Magu Male' Republic of Maldives

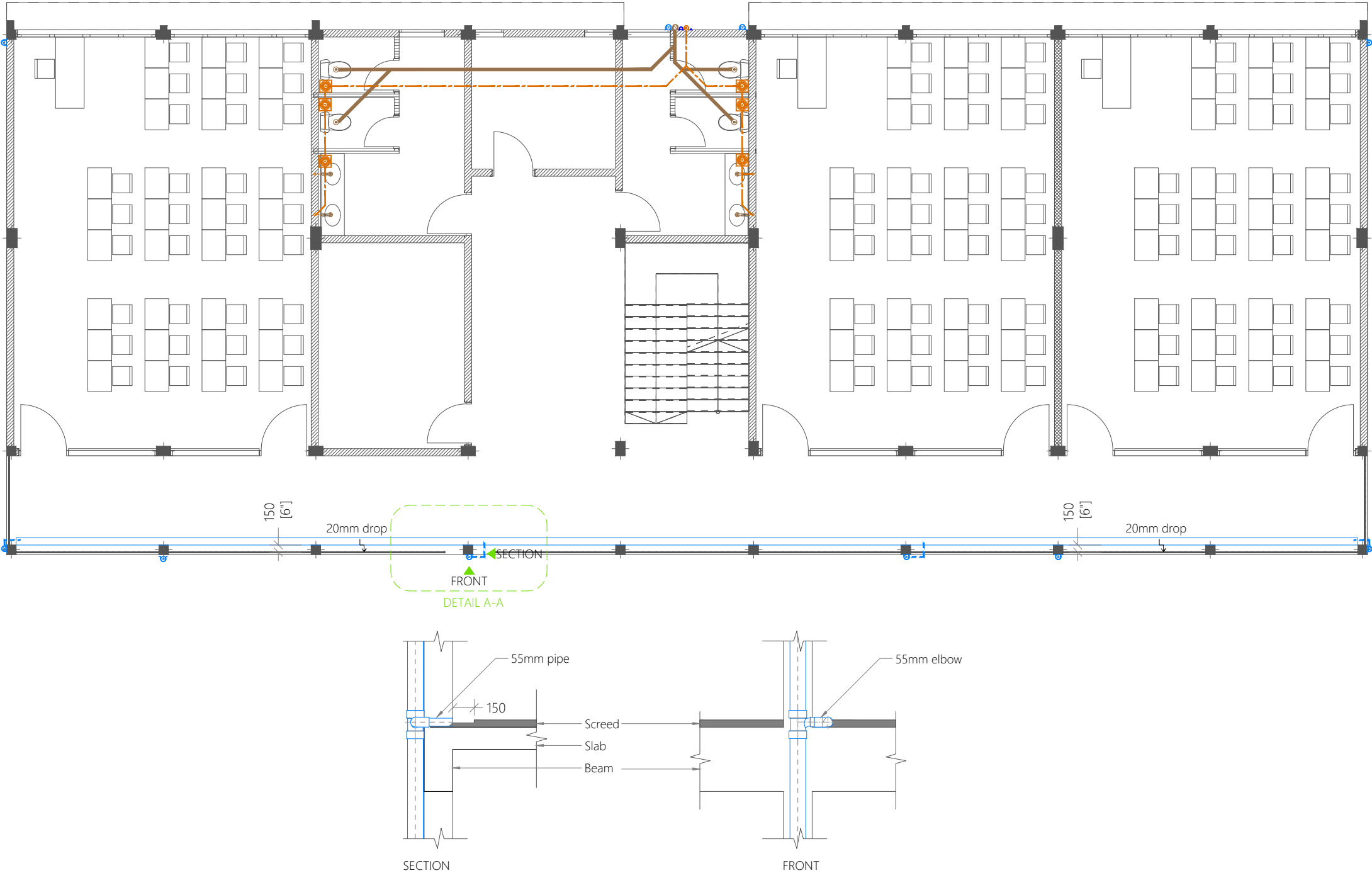
Rev:	Page:
---	DR- 02

Legend

-  Floor Drain
-  Floor Gully
-  110Ø Soil Pipe (uPVC Pipe)
-  110Ø Soil Vent Pipe (uPVC Pipe)
-  82Ø Waste Pipe (uPVC Pipe)
-  82Ø Waste Vent Pipe (uPVC Pipe)
-  40Ø Waste Pipe (uPVC Pipe)
-  63Ø Manhole Vent Pipe (uPVC Pipe)
-  110Ø Rain Water Pipes (uPVC Pipe)
-  110Ø Rainwater Outlet Perforated Cowl
-  Gully Trap
-  Clean Out Point
-  Bottle Trap

Notes: -

- All Drainage Pipes Should Have At A Slope Of 1/150
- All Floor Drains Should Have 'P' Traps



SECOND FLOOR DRAINAGE LAYOUT
1:100

PROPOSED 04 STOREY BUILDING AT
**12 CLASSROOM
BLOCK AND
OFFICE,HA ATOLL
EDUCATION
CENTER**

Client:
Ministry Of Education

February 2021

Services By: **Mohamed Rassam**
Checked By:
Drawn By: **Hussain Rasheed**



EPOCH

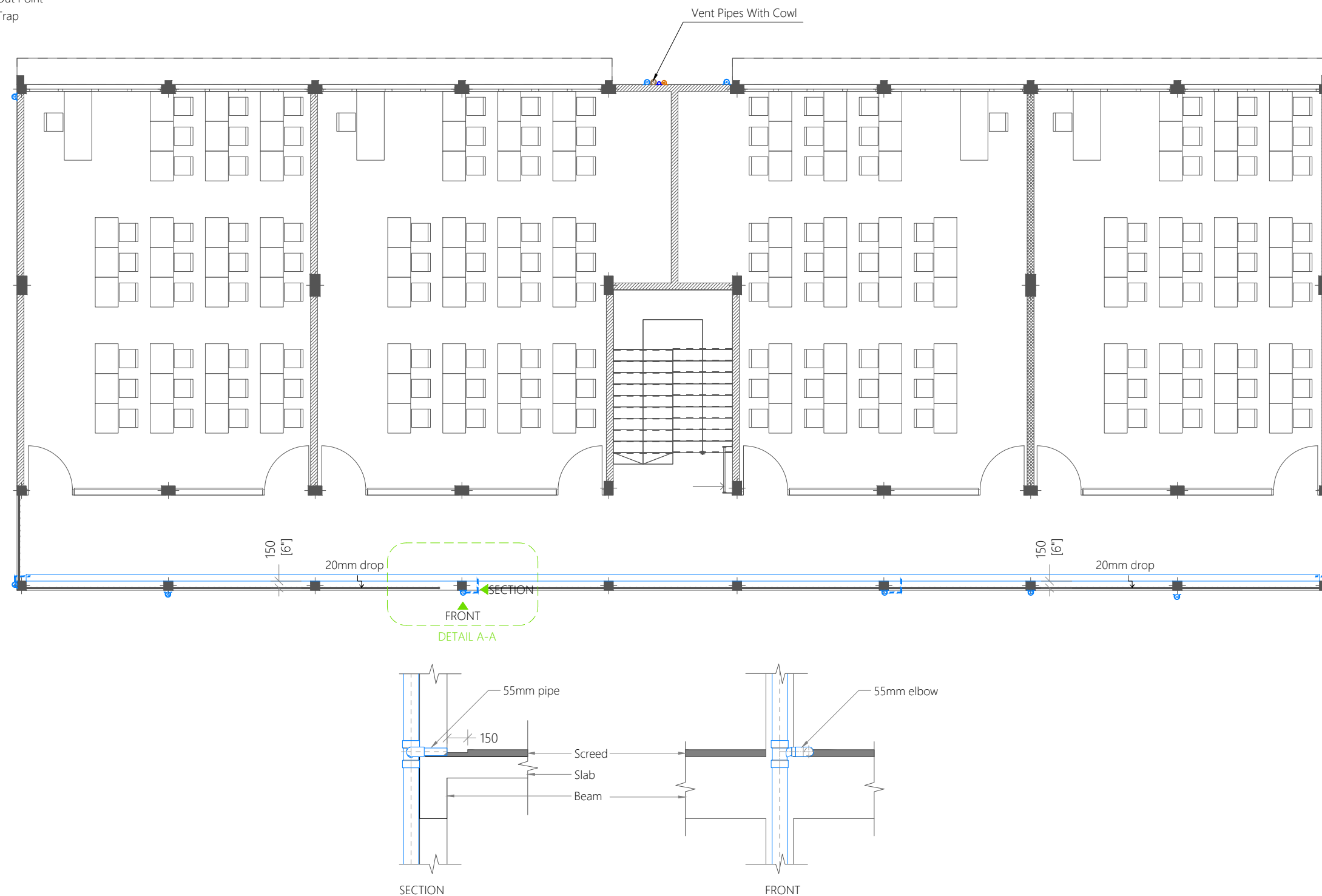
T: +960 333 3528, E: info@epoch.associates
W: www.epoch.associates, A: G. Rosary West,
Husnuheena Magu Male' Republic of Maldives

Rev: ---
Page: **DR- 03**

- Legend
- Floor Drain
 - Floor Gully
 - 110Ø Soil Pipe (uPVC Pipe)
 - 110Ø Soil Vent Pipe (uPVC Pipe)
 - 82Ø Waste Pipe (uPVC Pipe)
 - 82Ø Waste Vent Pipe (uPVC Pipe)
 - 40Ø Waste Pipe (uPVC Pipe)
 - 63Ø Manhole Vent Pipe (uPVC Pipe)
 - 110Ø Rain Water Pipes (uPVC Pipe)
 - 110Ø Rainwater Outlet Perforated Cowl
 - Gully Trap
 - Clean Out Point
 - Bottle Trap

Notes: -

- All Drainage Pipes Should Have At A Slope Of 1/150
- All Floor Drains Should Have 'P' Traps



THIRD FLOOR DRAINAGE LAYOUT
1:100

PROPOSED 04 STOREY BUILDING AT
**12 CLASSROOM
BLOCK AND
OFFICE,HA ATOLL
EDUCATION
CENTER**
Client:
Ministry Of Education

February 2021

Services By: **Mohamed Rassam**
Checked By:
Drawn By: **Hussain Rasheed**

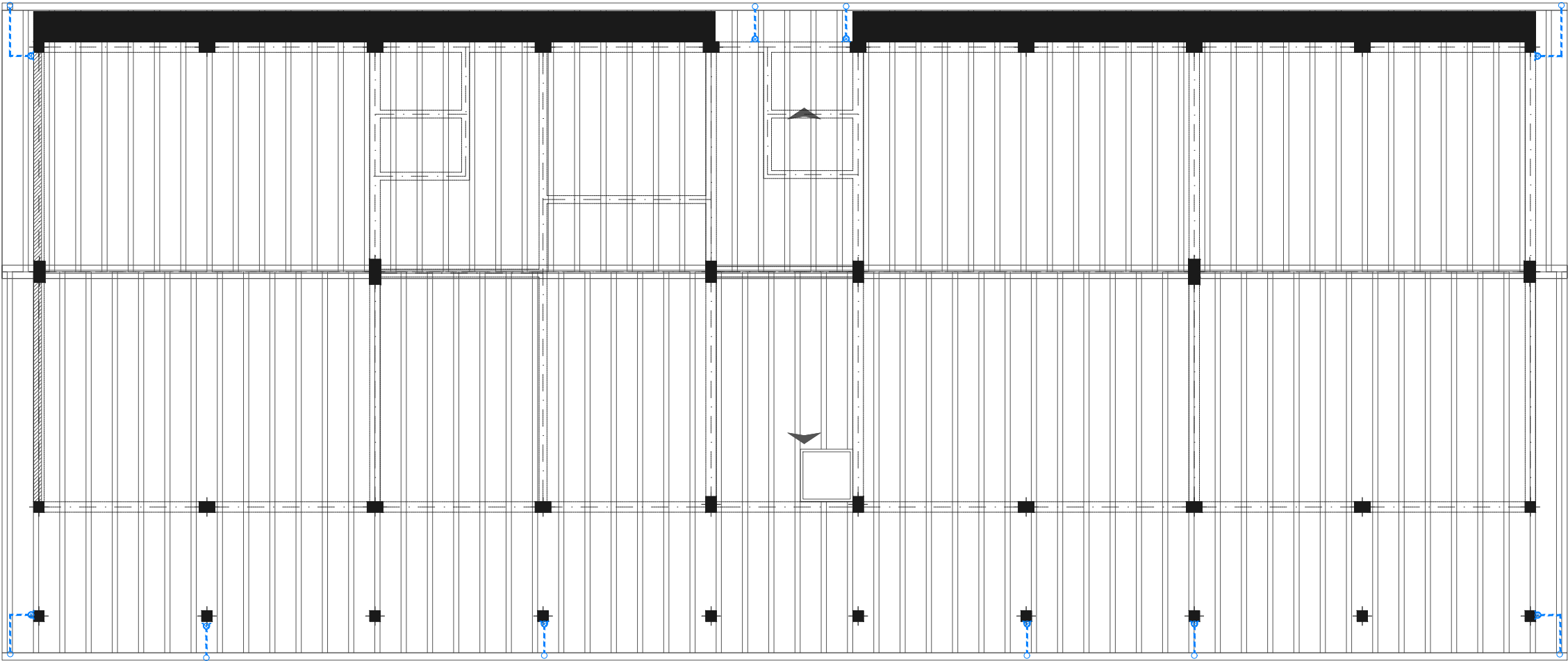


T: +960 333 3528, E: info@epoch.associates
W: www.epoch.associates, A: G. Rosary West,
Husnuheena Magu Male' Republic of Maldives

Rev:	Page:
---	DR- 04

Legend

110Ø Rain Water Pipes (uPVC Pipe)



PROPOSED 04 STOREY BUILDING AT
**12 CLASSROOM
BLOCK AND
OFFICE,HA ATOLL
EDUCATION
CENTER**
Client:
Ministry Of Education

February 2021

Services By: **Mohamed Rassam**
Checked By:
Drawn By: **Hussain Rasheed**



T: +960 333 3528 **E:** info@epoch.associates
W: www.epoch.associates, **A:** G. Rosary West,
Husnuheena Magu Male' Republic of Maldives

Rev:	Page:
---	DR-05

