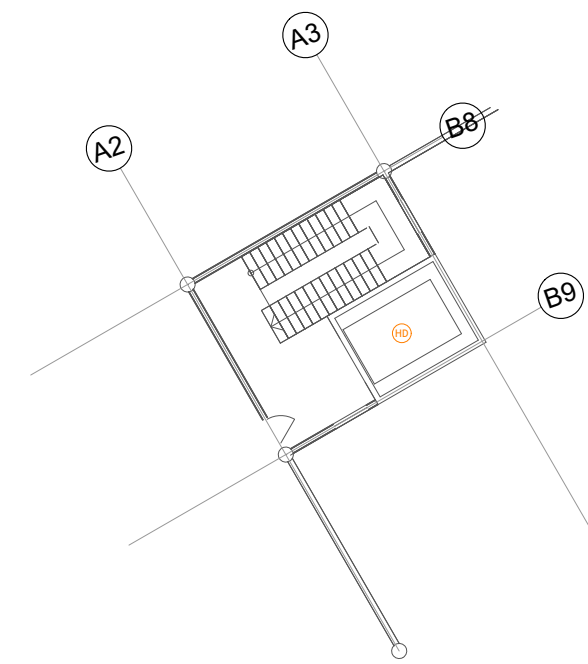
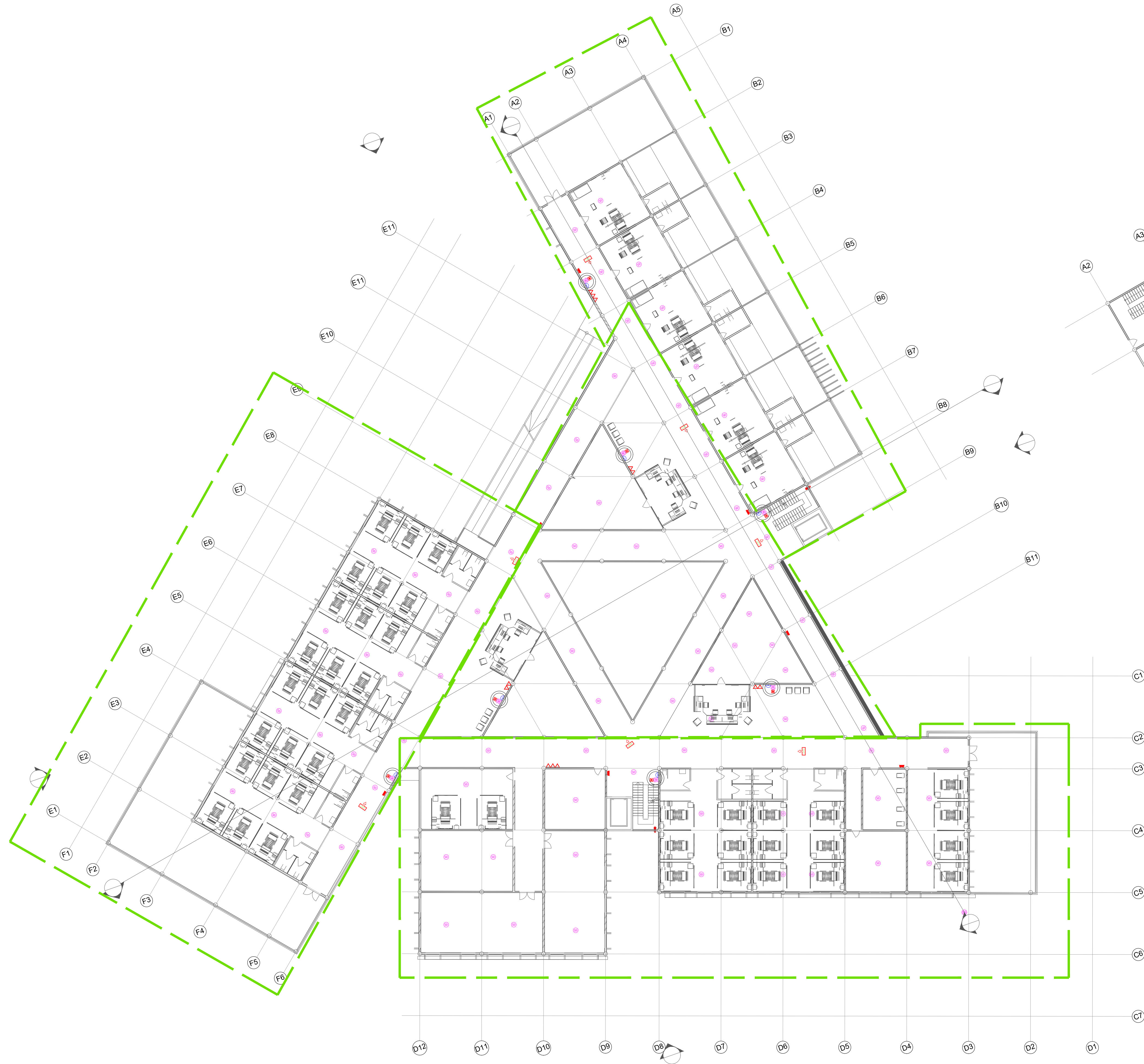


1. ALL DRY RISER PIPES SHOULD BE GALVANIZED, SCHEDULE 40.
2. ALL DRY RISER PIPES SHALL BE PAINTED IN RED AS PER REGULATION.
3. ALL SUPPORT/BRACKET SHALL BE HOT DIPPED GALVANIZED.

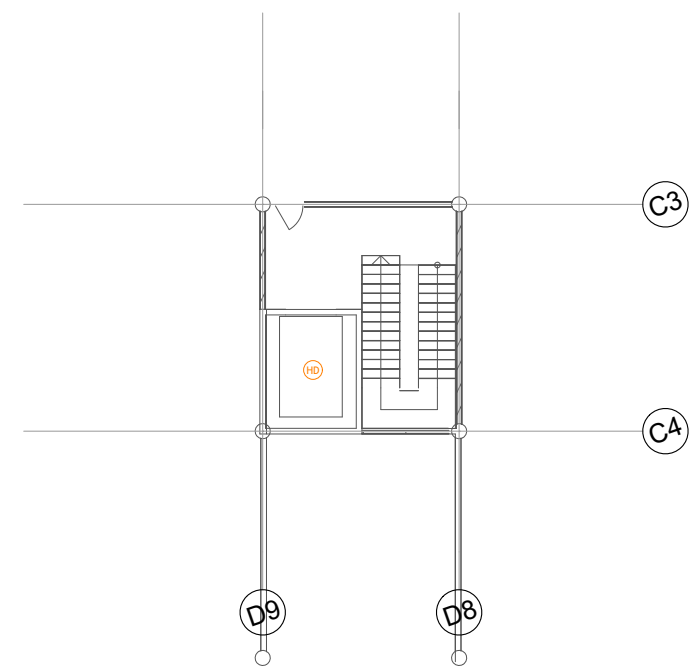




AT ROOF LEVEL

- Wet Chemical Extinguisher (load: 6L) In Polycarbonate Enclosure
- CO<sub>2</sub> Extinguisher (load: 2kg) In Polycarbonate Enclosure
- DCP Extinguisher (load: 6kg) In Polycarbonate Enclosure
- H<sub>2</sub>O Extinguisher (load: 9L) In Polycarbonate Enclosure
- Manual Call Point
- Smoke Detector
- Heat Detector
- Beacon
- Sounder Bell
- 2.5mm<sup>2</sup> Fire Retardant Low Smoke (FRLS) Cables In FRLS Conduits
- FACP Fire Alarm Control Panel
- Exit Sign
- 30m Horse Reel
- Landing Valve
- 4 Way Breaching Inlet
- Zone Boundary line

1. ALL DRY RISER PIPES SHOULD BE GALVANIZED, SCHEDULE 40.
2. ALL DRY RISER PIPES SHALL BE PAINTED IN RED AS PER REGULATION.
3. ALL SUPPORT/BRACKET SHALL BE HOT DIPPED GALVANIZED.



AT ROOF LEVEL

SECOND FLOOR FDP LAYOUT

1:200