



TVET Center Recreation Block
R. Alifushi

BUILDING SERVICES DRAWINGS
Ministry of Higher Education

Legend

- 82Ø PVC Duct For Tel./Internet Cable Lead In Below Ground Slab
- 82Ø PVC Duct For TV Cable Lead In Below Ground Slab
- Main Incoming Cable For Power In 110Ø PVC Duct Below Ground Slab

- 13A Power Socket
- 13A Power Socket in Weatherproof Polycarbonate Enclosure
- 13A Twin Socket
- 15A Switched Socket @ H.L.
- 20A TPN Isolator
- Distribution Board
- HL. High Level
- Angular Camera
- Digital/network Video Recorder
- Security Monitor

- ISB Internet Switchboard
- MNB Medianet Booster
- Telephone Outlet
- Computer Network Outlet
- TV Socket Outlet
- Emergency Light
- Biometric Door Lock With Card Reader at 1100
- Computer Network Twin Outlet
- HDMI Socket
- Public Address System
- WS Wall Mounted Speaker
- Ceiling Mounted Exhaust Fan 90m3/hr

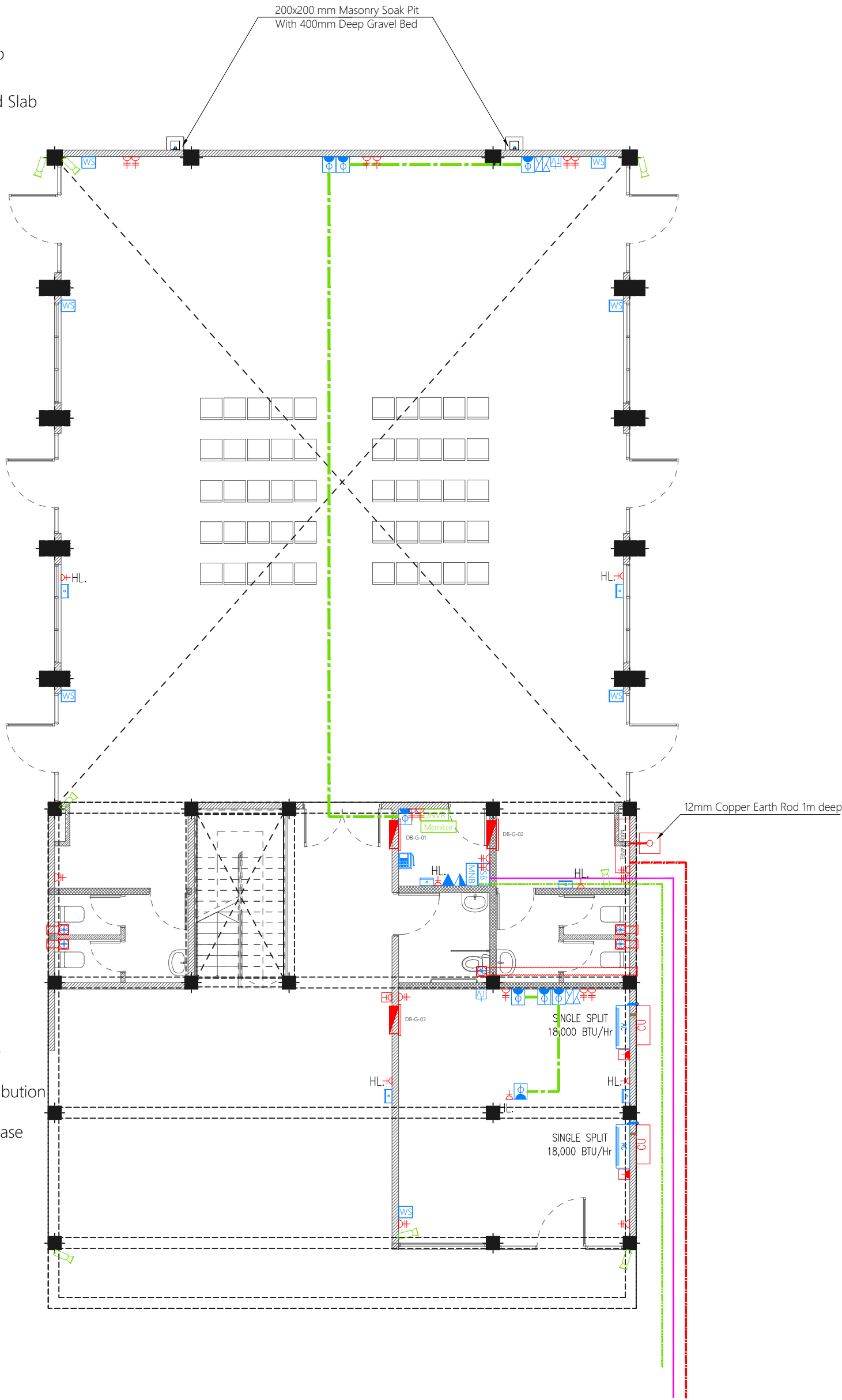
- Refrigerant Pipes
- 25Ø Condensate Drain Pipe
- 40Ø Condensate Drain Riser Pipe

- CU Outdoor Condensing Unit

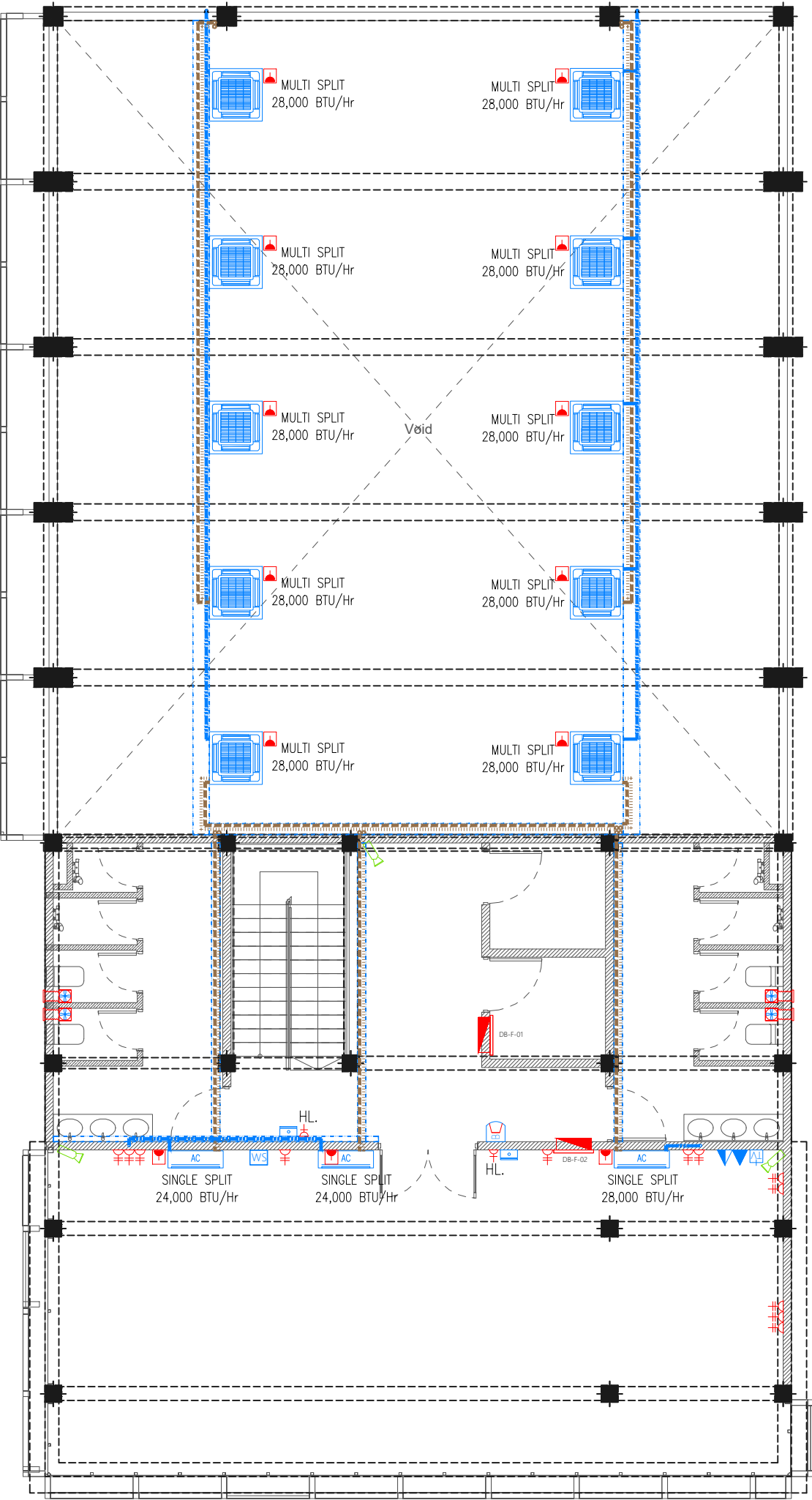
- AC Wall Mount Air Conditioner

- 4-Way Cassette Air Conditioner

- Notes: -
- All Twin Sockets At 300mm From F.F.L. Except Stated Otherwise
 - All Computer, Telephone Points At 300mm From F.F.L.
 - All electrical components shall be connected to respective Distribution Box in the same area as the component.
 - All electrical components in common areas, corridors and staircase should be connected to Common Area DB
 - Wall Speaker shall be connected to Public address system



GROUND FLOOR POWER AND ACV LAYOUT



FIRST FLOOR POWER AND ACV LAYOUT

Proposed
**TVET Center
Recreation Block
R. Alifushi**

Client
Ministry of Higher Education

Services By
Checked By
Drawn By
**Mohamed Rassam
Mohamed Zaidhan**

EPOCH
P (+960) 33 33 528 E info@epochassociates
W epochassociates A G.Rosary West 3rd Floor,
Hunnuheena Magu, Male', Maldives

Rev:
Page:
PAC-01

Legend

- 82Ø PVC Duct For Tel./Internet Cable Lead In Below Ground Slab
- 82Ø PVC Duct For TV Cable Lead In Below Ground Slab
- Main Incoming Cable For Power In 110Ø PVC Duct Below Ground Slab
- 13A Power Socket
- 13A Power Socket in Weatherproof Polycarbonate Enclosure
- 13A Twin Socket
- 15A Switched Socket @ H.L.
- 20A TPN Isolator
- Distribution Board
- HL.

High Level
- Angular Camera
- DNVR

Digital/network Video Recorder
- Monitor

Security Monitor
- ISB

Internet Switchboard
- MNB

Medianet Booster
- Telephone Outlet
- Computer Network Outlet
- TV

TV Socket Outlet
- Emergency Light
- B

Biometric Door Lock With Card Reader at 1100
- Computer Network Twin Outlet
- HDMI Socket
- Public Address System
- WS

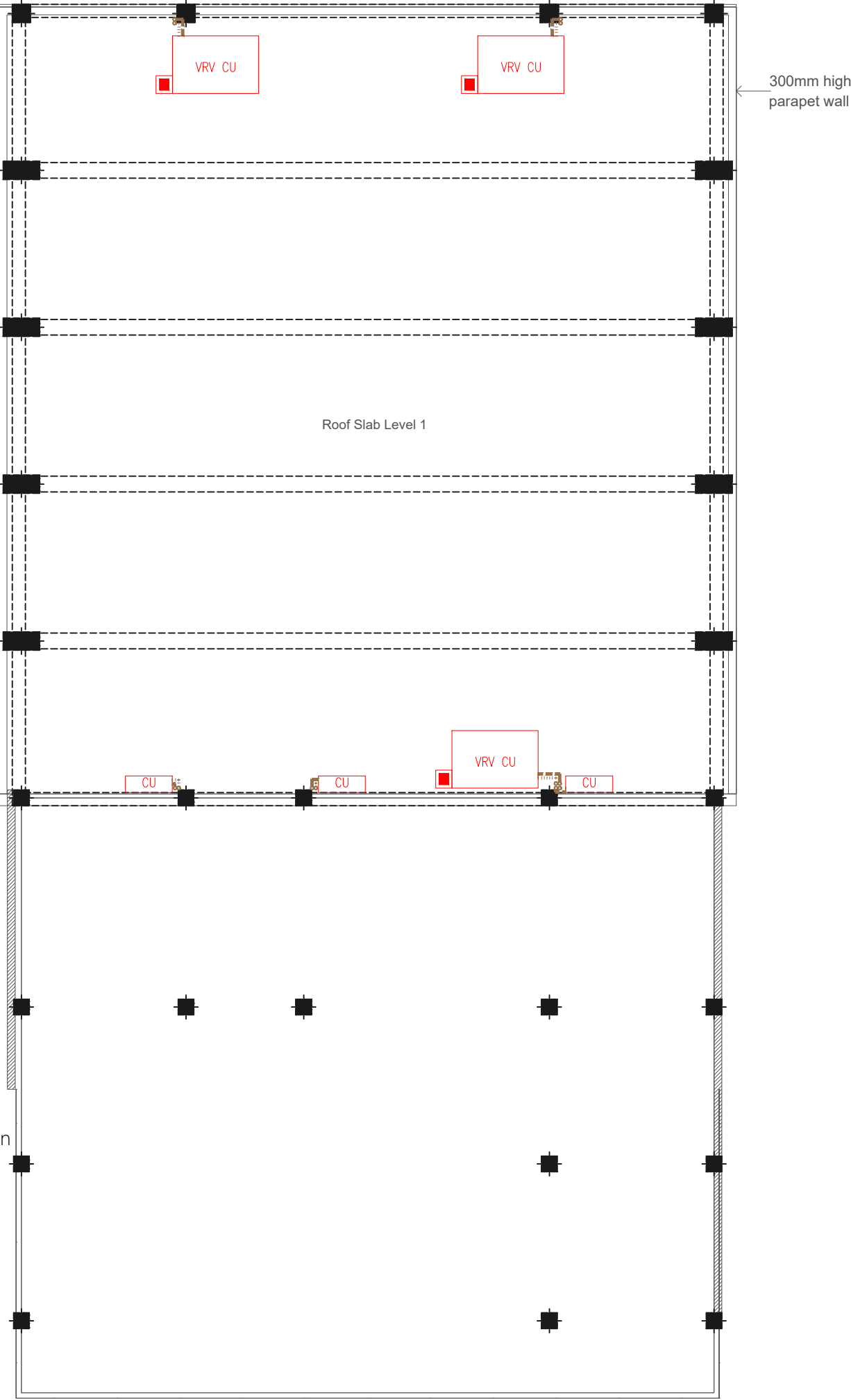
Wall Mounted Speaker
- Ceiling Mounted Exhaust Fan 90m3/hr
- Refrigerant Pipes
- 25Ø Condensate Drain Pipe
- 40Ø Condensate Drain Riser Pipe
- CU

Outdoor Condensing Unit
- AC

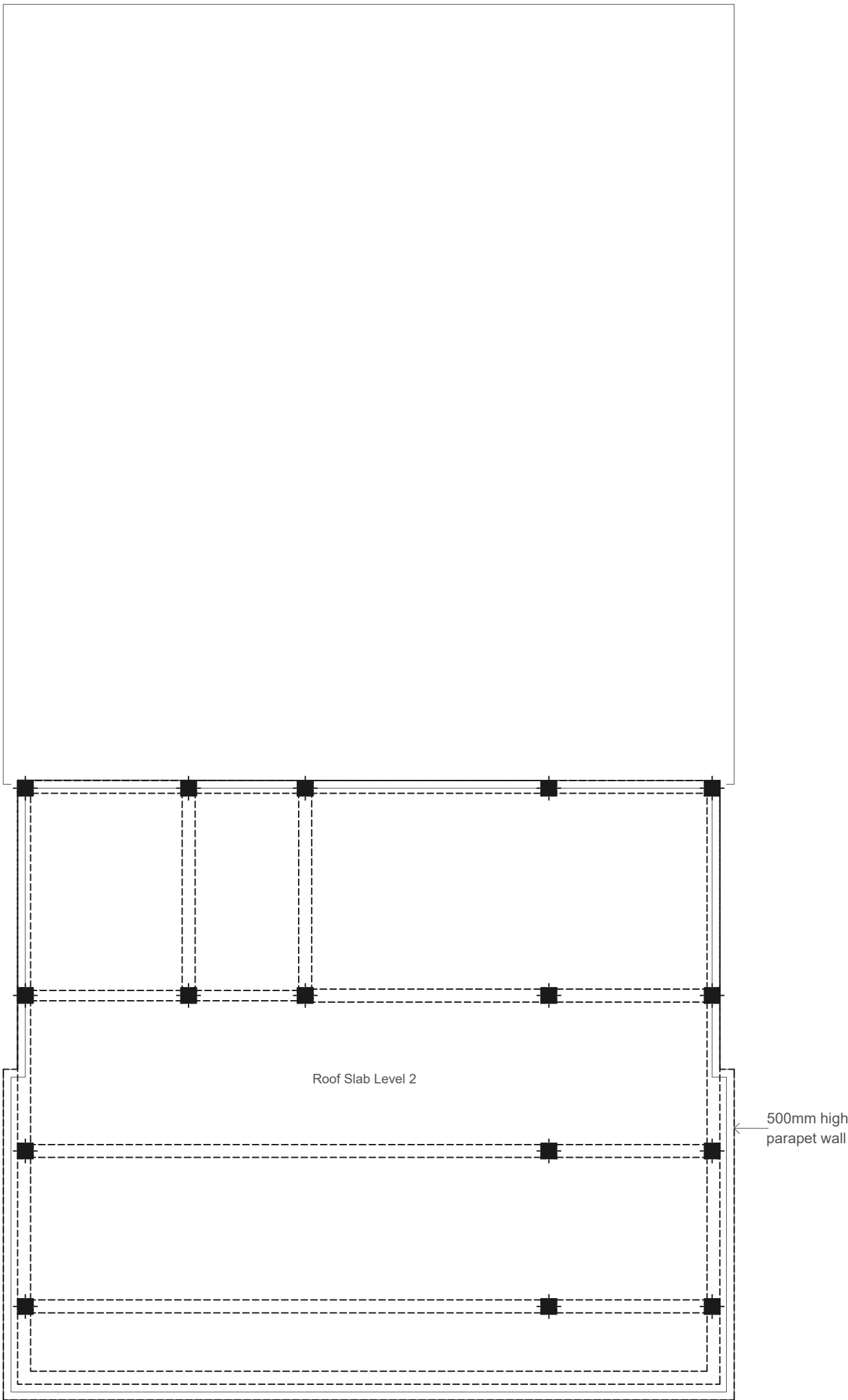
Wall Mount Air Conditioner
- 4-Way Cassette Air Conditioner

Notes: -

- All Twin Sockets At 300mm From F.F.L. Except Stated Otherwise
- All Computer, Telephone Points At 300mm From F.F.L.
- All electrical components shall be connected to respective Distribution Box in the same area as the component.
- All electrical components in common areas, corridors and staircase should be connected to Common Area DB
- Wall Speaker shall be connected to Public address system



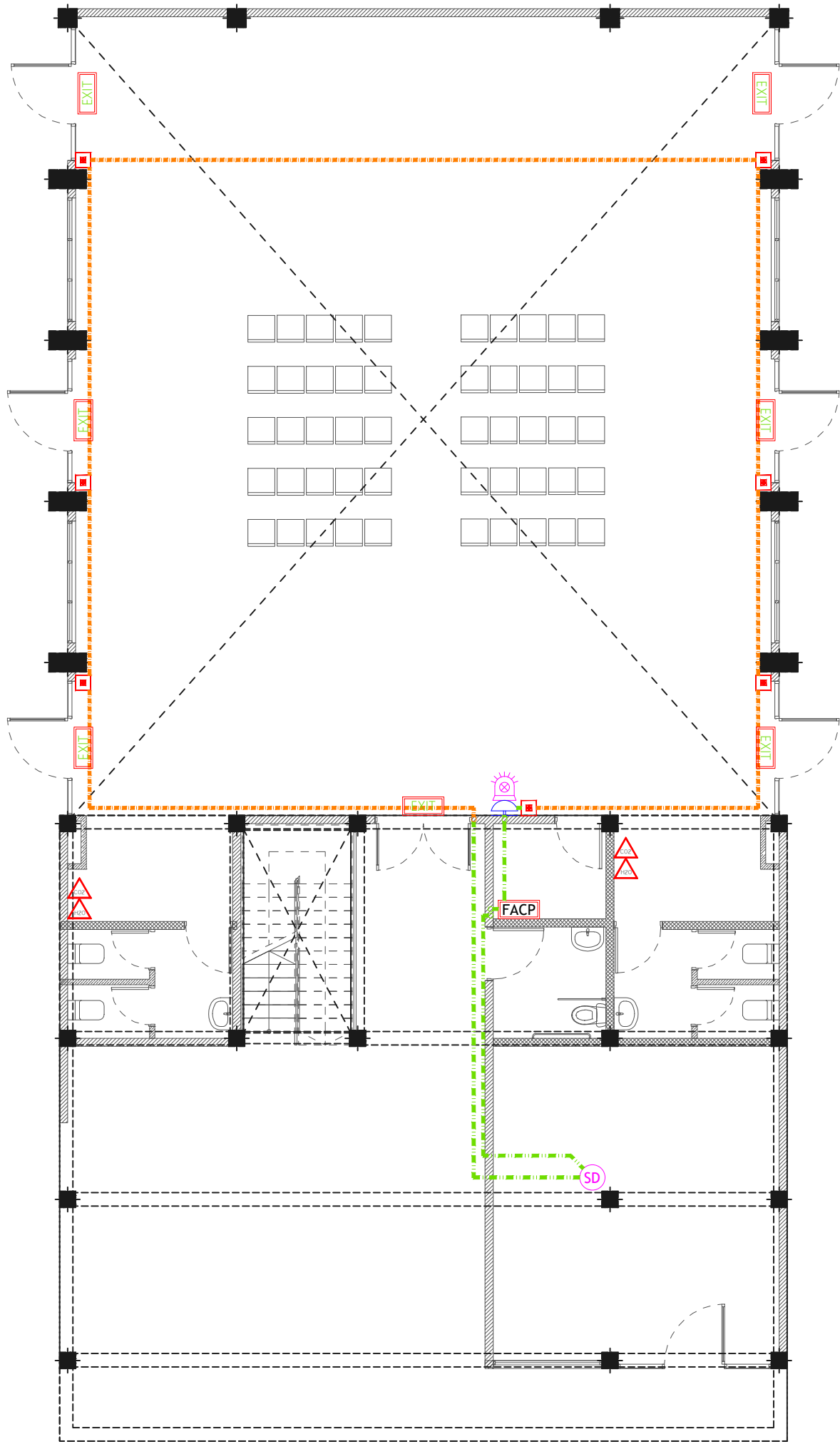
ROOF LEVEL 1 POWER AND ACV LAYOUT



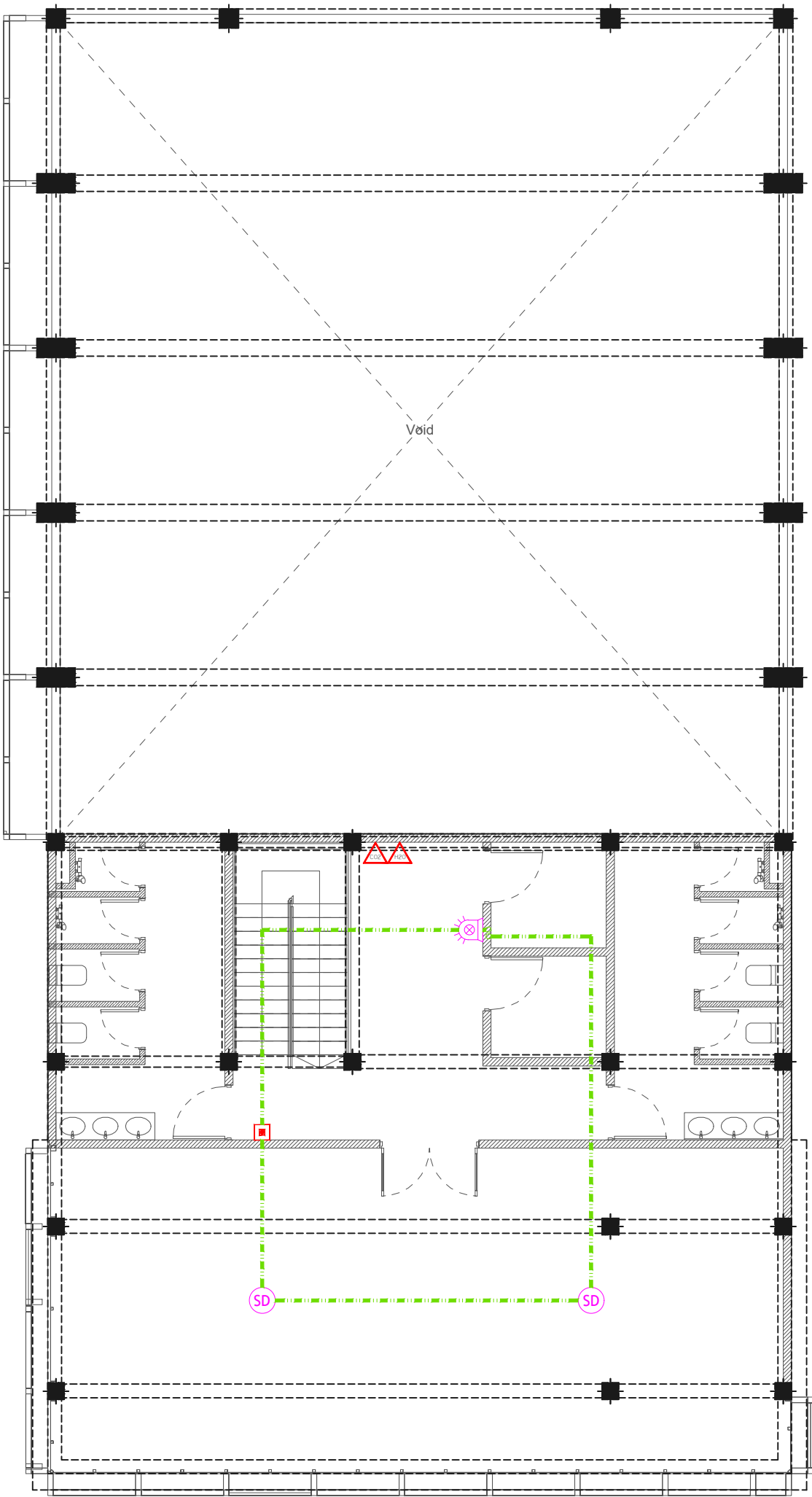
ROOF LEVEL 2 ACV LAYOUT

Legend

- 2.5mm² Fire Retardant Low Smoke (FRLS) Cables In FRLS Conduits (Running Underground)
- 2.5mm² Fire Retardant Low Smoke (FRLS) Cables In FRLS Conduits (Above False Ceiling or Through Slab)
- FACP** Fire Alarm Control Panel
- EXIT** Exit Sign
- CO₂ Extinguisher (load: 2kg) In Polycarbonate Enclosure
- H₂O Extinguisher (load: 9L) In Polycarbonate Enclosure
- Manual Call Point (At 1200mm from F.F.L.)
- Smoke Detector
- Beacon
- Sounder Bell



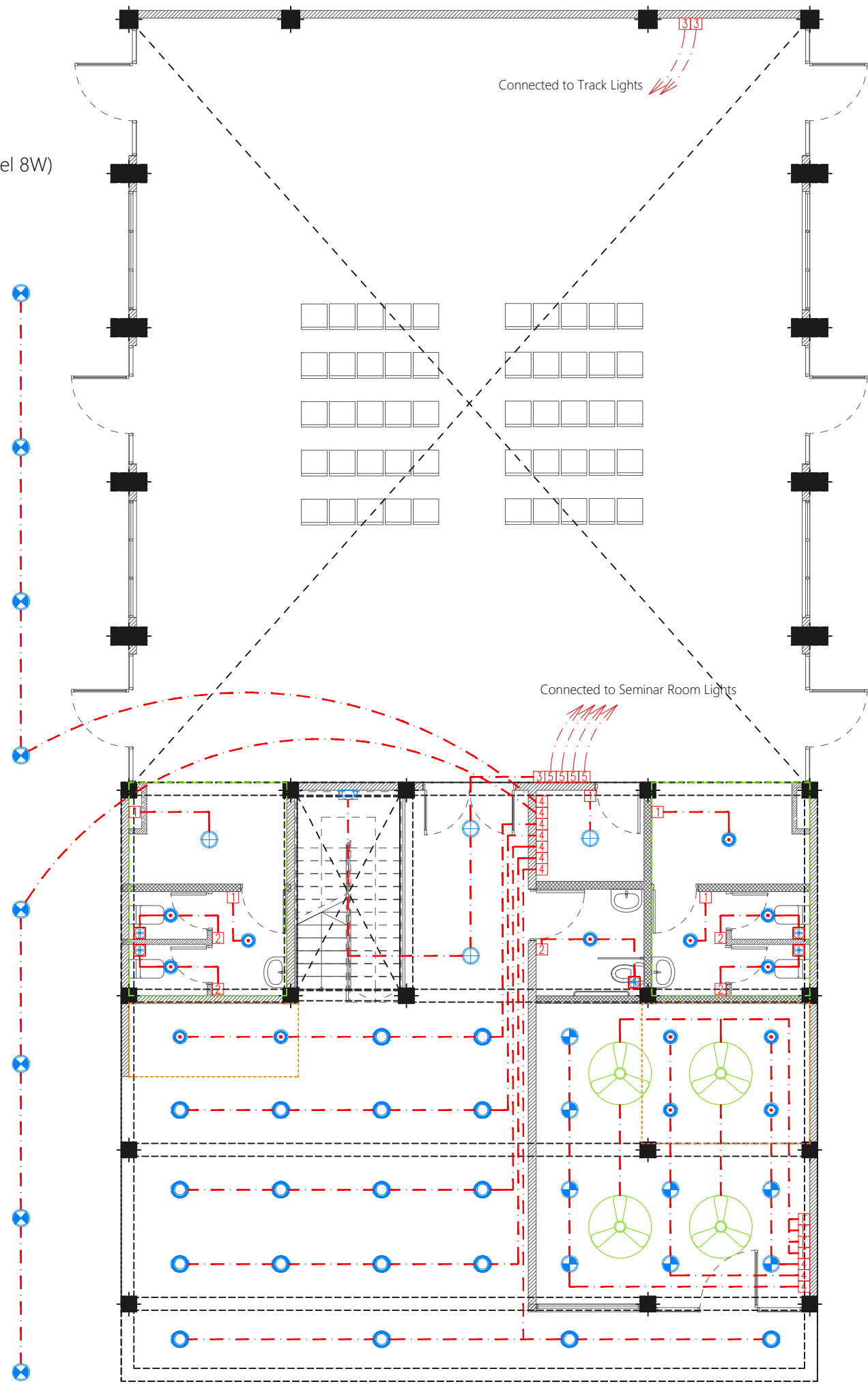
GROUND FLOOR FDP LAYOUT



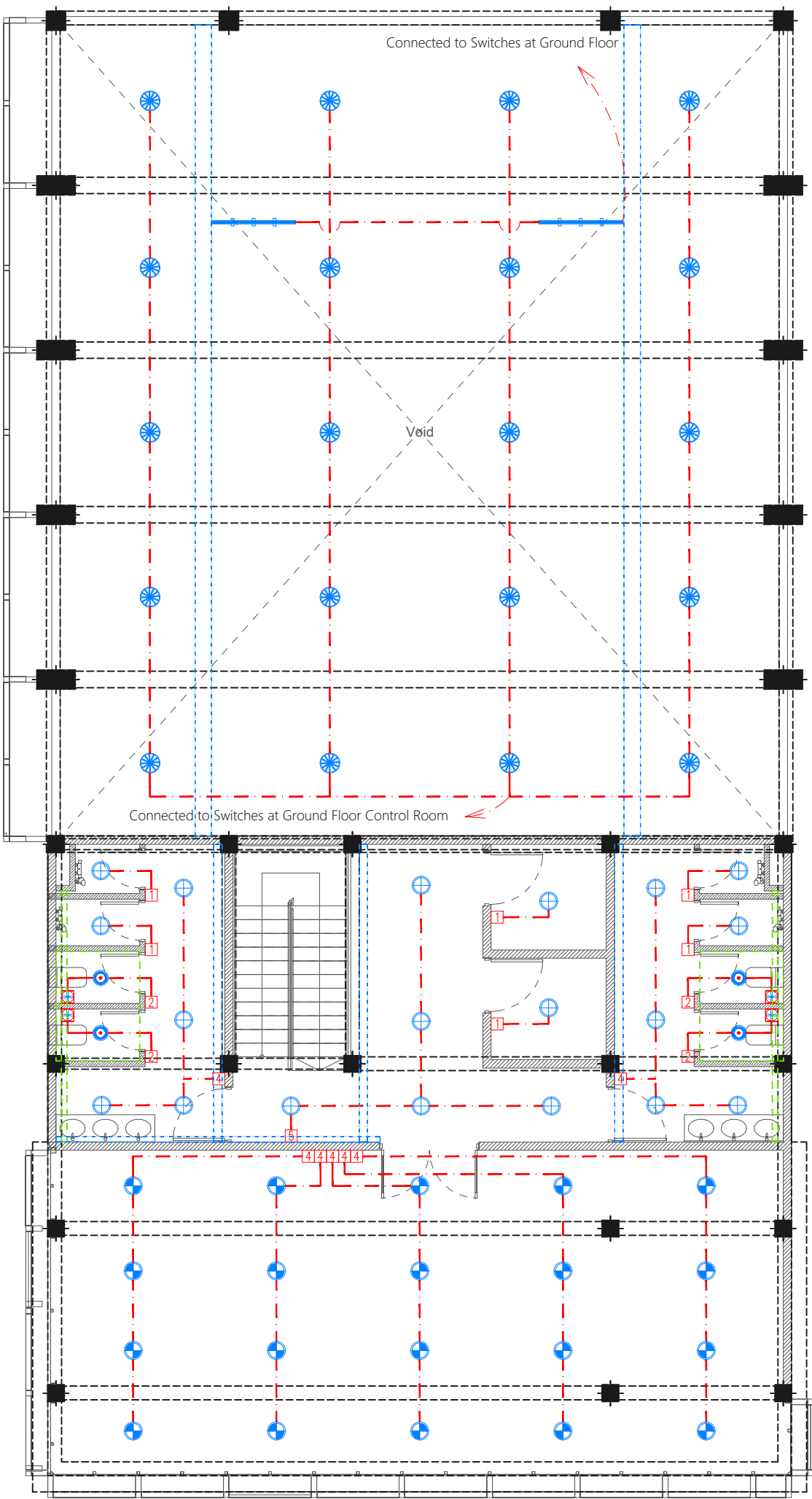
FIRST FLOOR FDP LAYOUT

Legend

- Cement Board False Ceiling [200mm below beam bottom]
- Plaster Board False Ceiling [200mm below beam bottom]
- Cement Board False Ceiling [at beam bottom level]
- Ceiling Light (18W)
- Ceiling Light (12W)
- Recessed Ceiling Light (12W)
- Ceiling Down Light (18W) - Weather Proof
- 100W, LED, Low Bay Light
- Wall Recessed Light With Motion Sensor (low Level 8W)
- Bollard Light IP65 (12W)
- Light and Fan Switch (1 Gang - 5 Gang)
- Ceiling Mounted Exhaust Fan 90m3/hr
- 42" To 48" Ceiling Fan



GROUND FLOOR LIGHTING LAYOUT



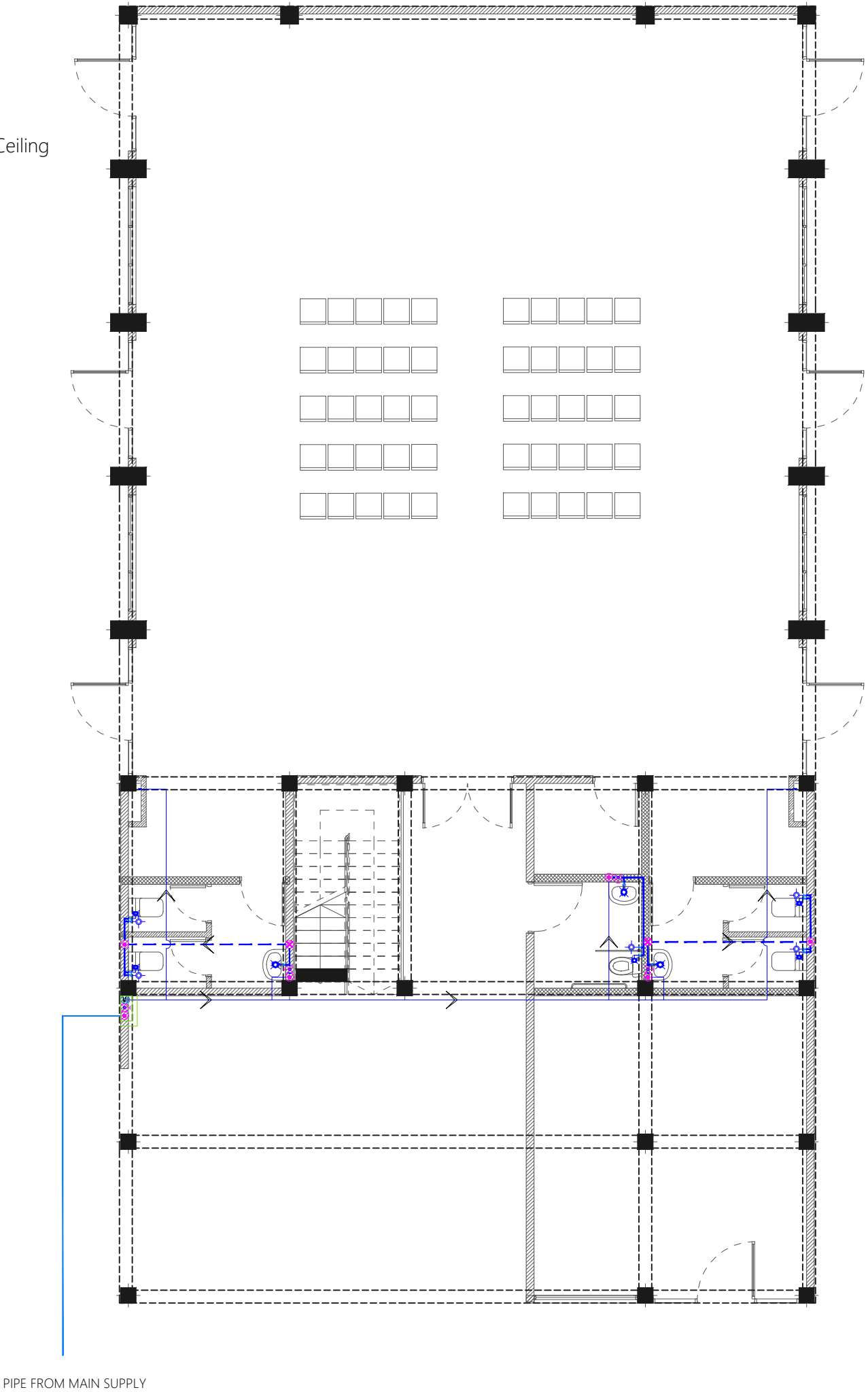
FIRST FLOOR LIGHTING LAYOUT

Legend

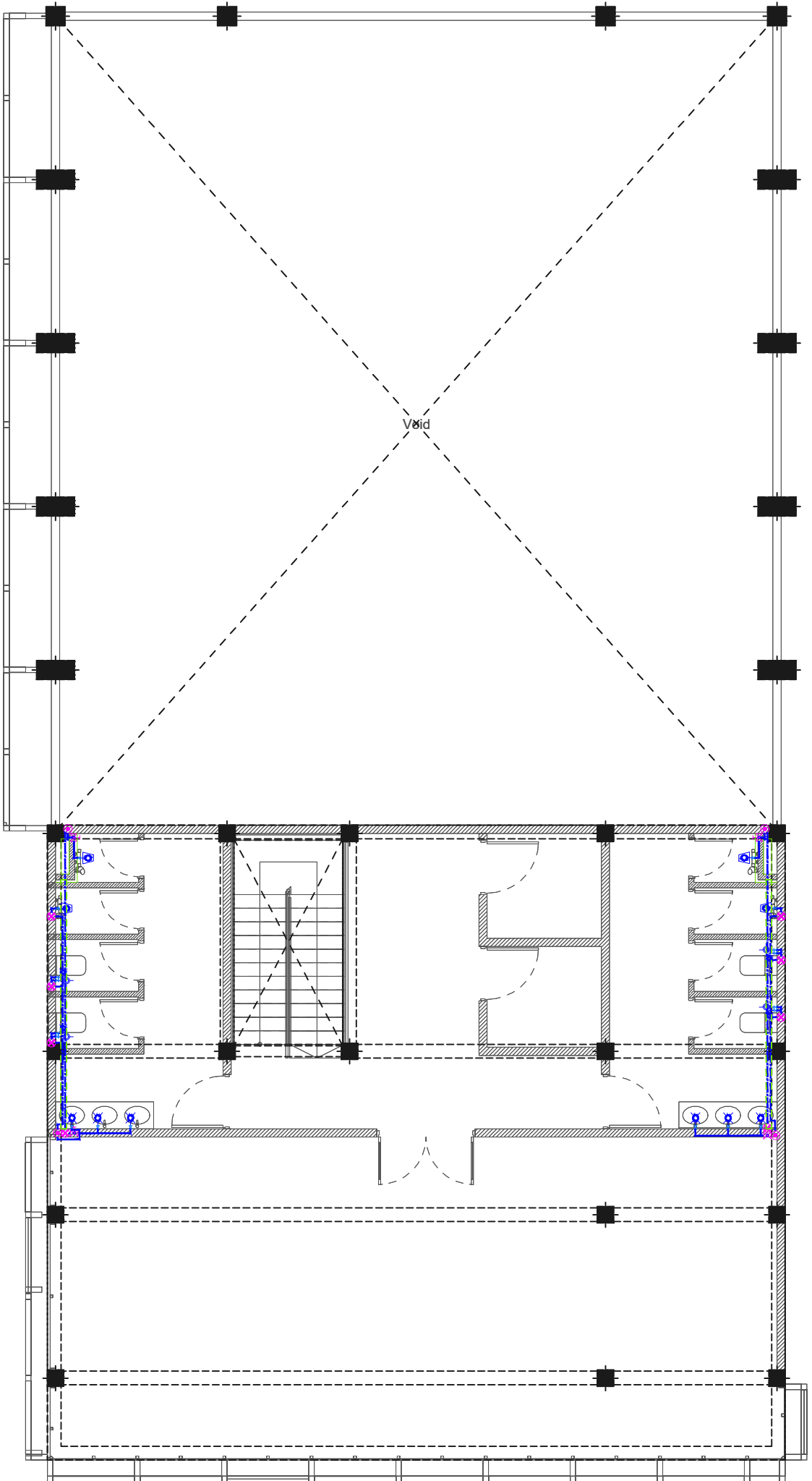
- MWSC Meter
- 16Ø Cold Water Supply To Basin Faucet
- 16Ø Cold Water Supply To Bidet Shower
- 16Ø Cold Water Supply To Cistern
- 16Ø Cold Water Supply To Head Shower
- Gate Valve
- Rise In Wall
- Drop In Wall
- 25Ø Cold Water Supply Pipes Running Underground
- 20Ø Cold Water Supply Pipes Running In Wall
- 20Ø Cold Water Supply Pipes Running Above False Ceiling
- 20Ø Cold Water Supply Pipes Running Underground

Notes: -

- All Cold Water Pipes Should Be PVC
- All Hot Water Pipes Should Be PPR



GROUND FLOOR PLUMBING LAYOUT



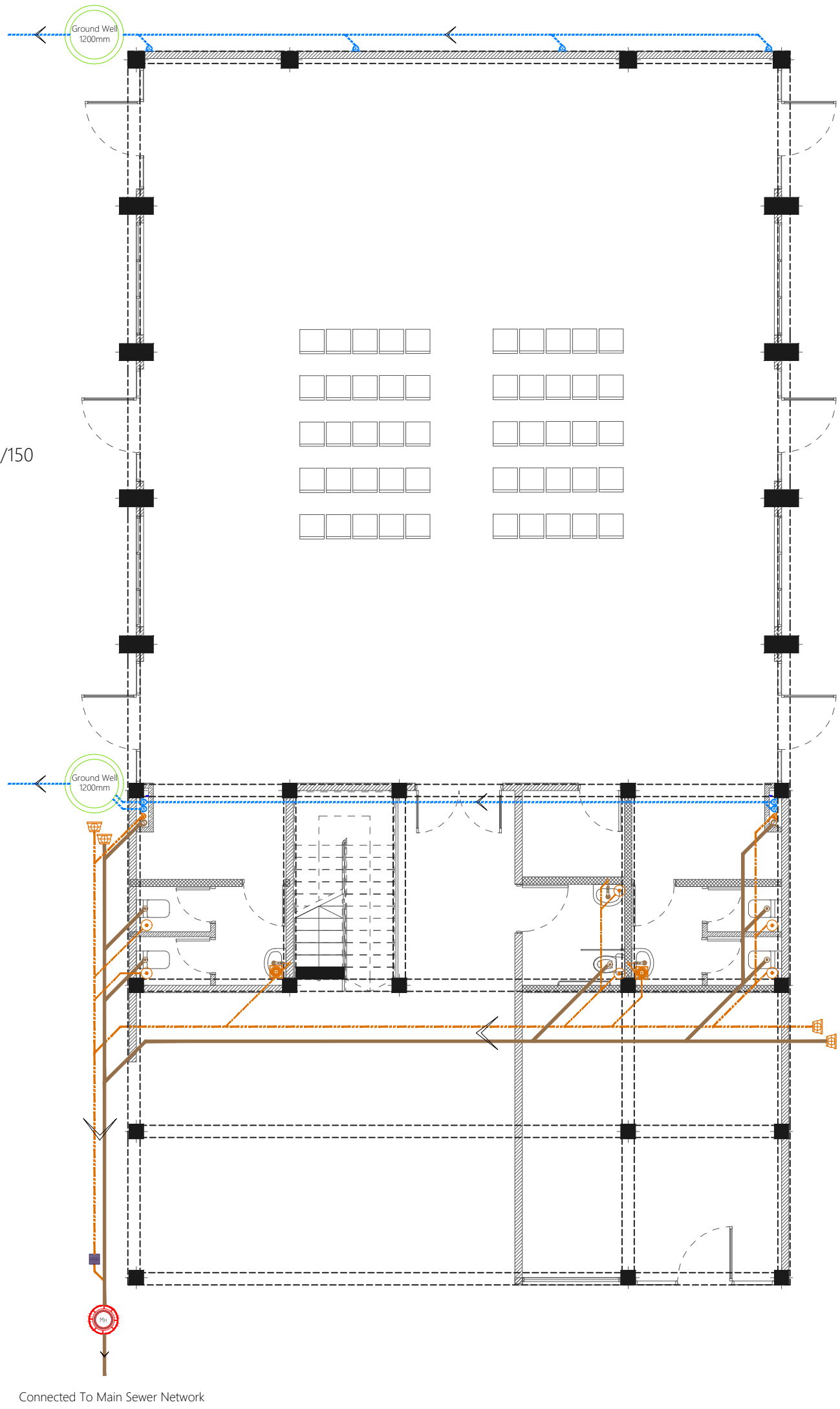
FIRST FLOOR PLUMBING LAYOUT

Legend

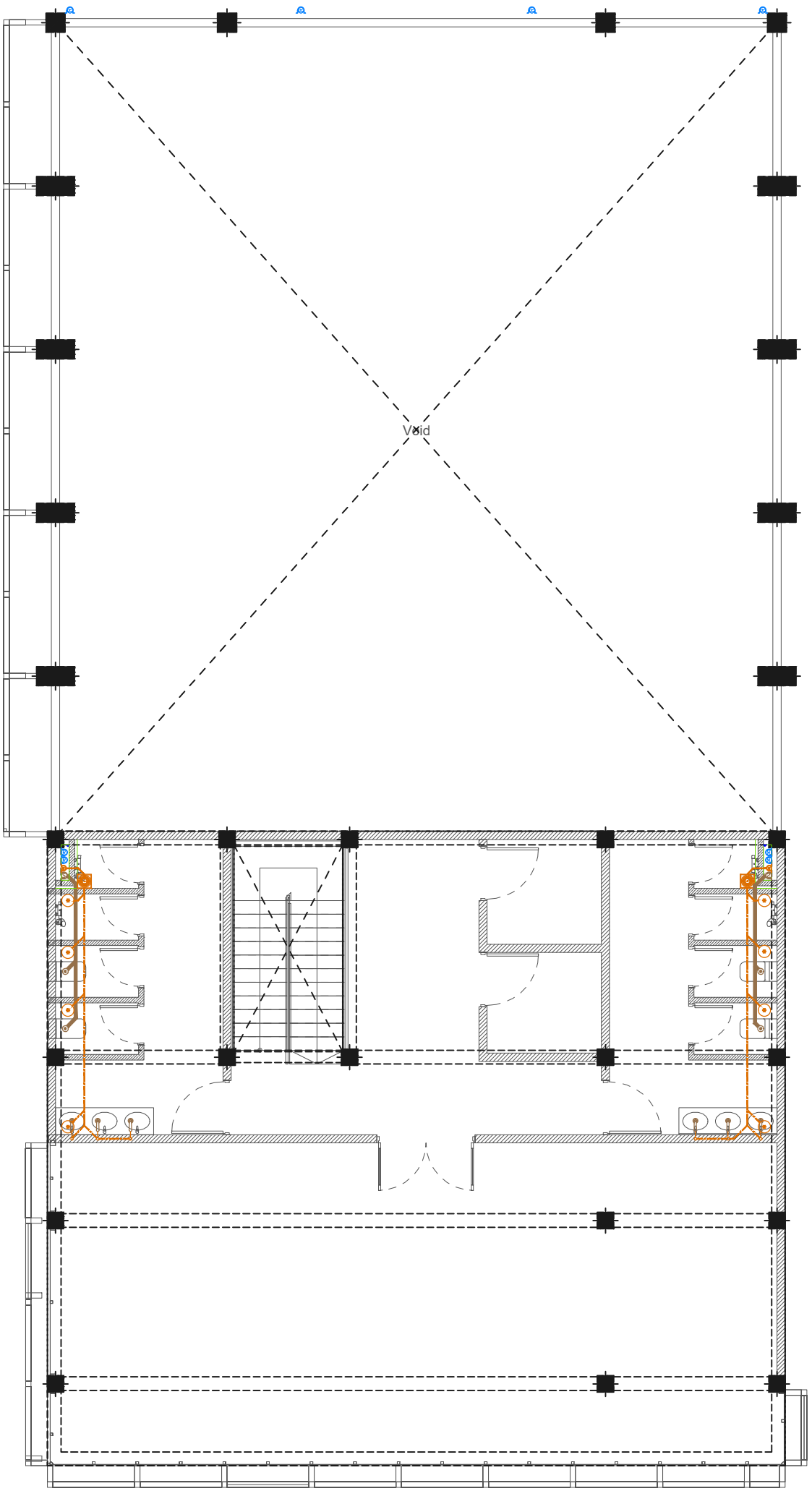
- Floor Drain
- Floor Gully
- Clean Out Point
- Bottle Trap
- Gully Trap
- 110Ø Rainwater Outlet
- 110Ø Soil Pipe (uPVC Pipe)
- 110Ø Soil Vent Pipe (uPVC Pipe)
- 82Ø Waste Pipe (uPVC Pipe)
- 82Ø Waste Vent Pipe (uPVC Pipe)
- 40Ø Waste Pipe (uPVC Pipe)
- 63Ø Manhole Vent Pipe (uPVC Pipe)
- 110Ø Rain Water Pipes (uPVC Pipe)
- Manhole

Notes: -

- All Drainage Pipes Should Have At A Slope Of 1/150
- All Floor Drains Should Have 'P' Traps

















GROUND FLOOR DRAINAGE LAYOUT



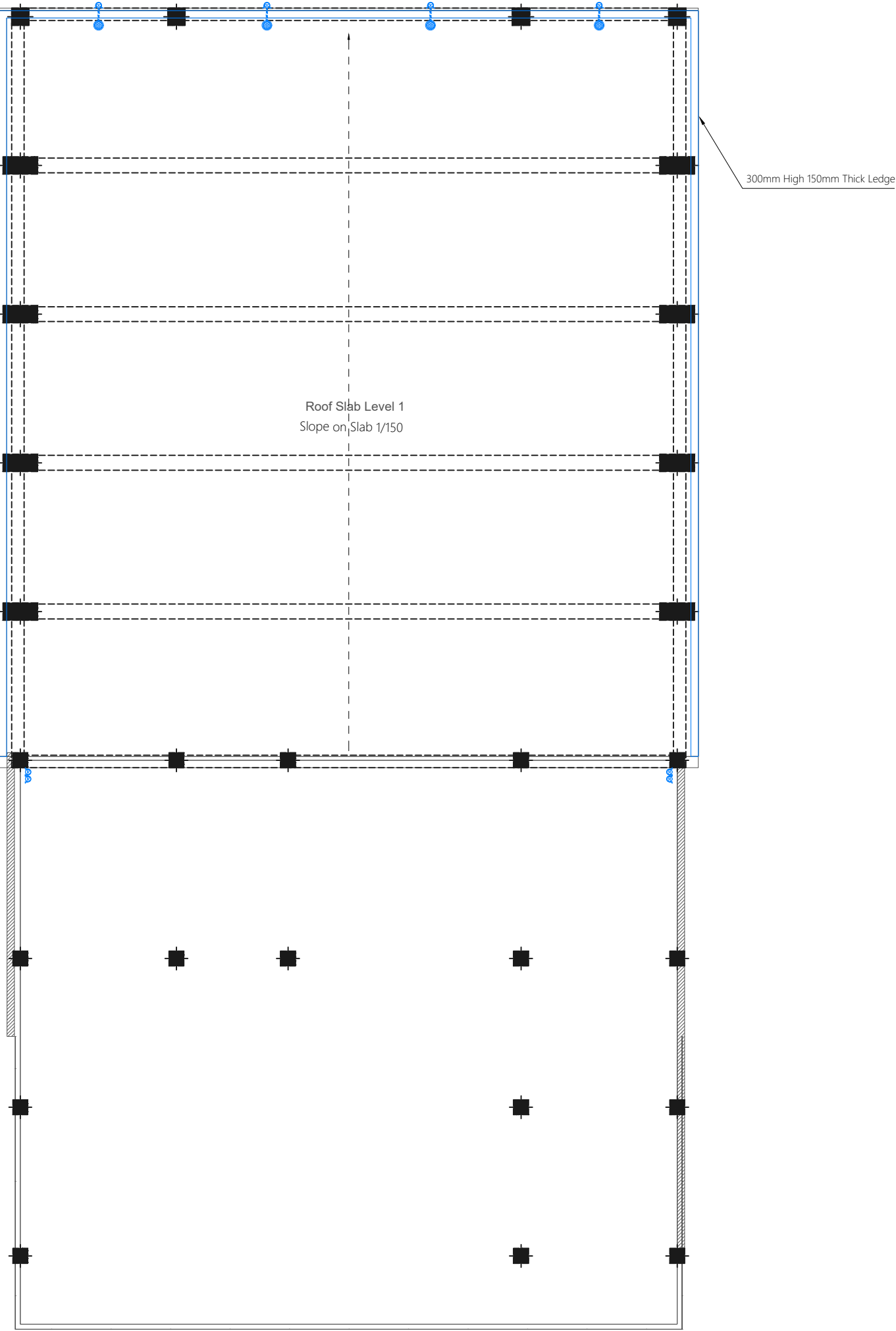
FIRST FLOOR DRAINAGE LAYOUT

Legend

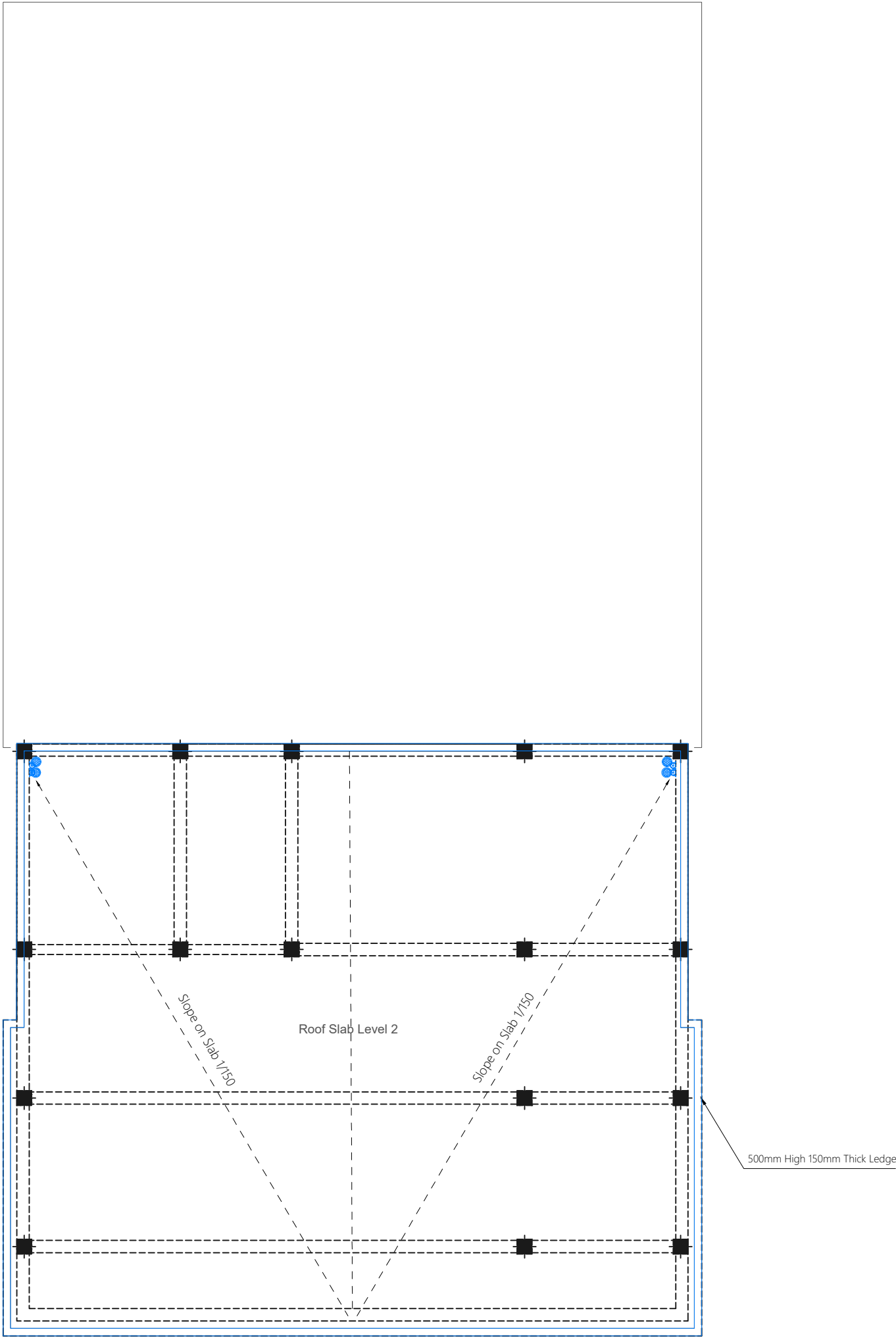
-  Floor Drain
-  Floor Gully
-  Clean Out Point
-  Bottle Trap
-  Gully Trap
-  110Ø Rainwater Outlet
-  110Ø Soil Pipe (uPVC Pipe)
-  110Ø Soil Vent Pipe (uPVC Pipe)
-  82Ø Waste Pipe (uPVC Pipe)
-  82Ø Waste Vent Pipe (uPVC Pipe)
-  40Ø Waste Pipe (uPVC Pipe)
-  63Ø Manhole Vent Pipe (uPVC Pipe)
-  110Ø Rain Water Pipes (uPVC Pipe)
-  Manhole

Notes: -

- All Drainage Pipes Should Have At A Slope Of 1/150
- All Floor Drains Should Have 'P' Traps



ROOF LEVEL 1 DRAINAGE LAYOUT



ROOF LEVEL 2 DRAINAGE LAYOUT

FIRST FLOOR DRAINAGE LAYOUT

1:100