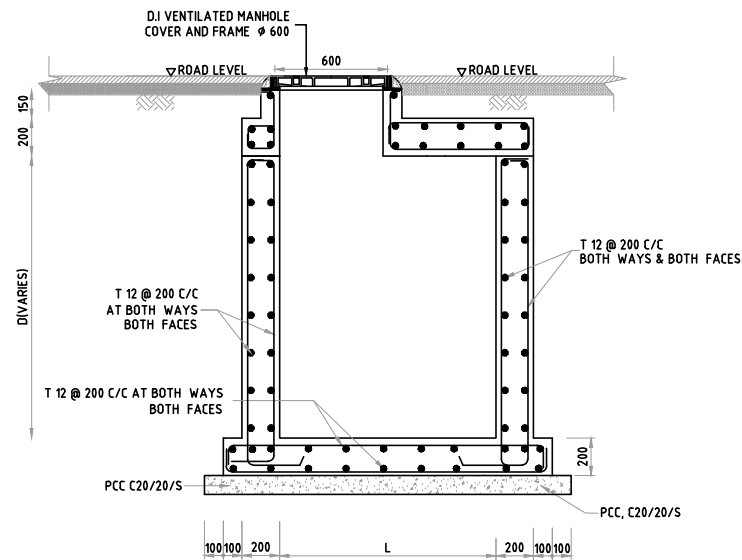


SECTION A-A
SCALE 1:20



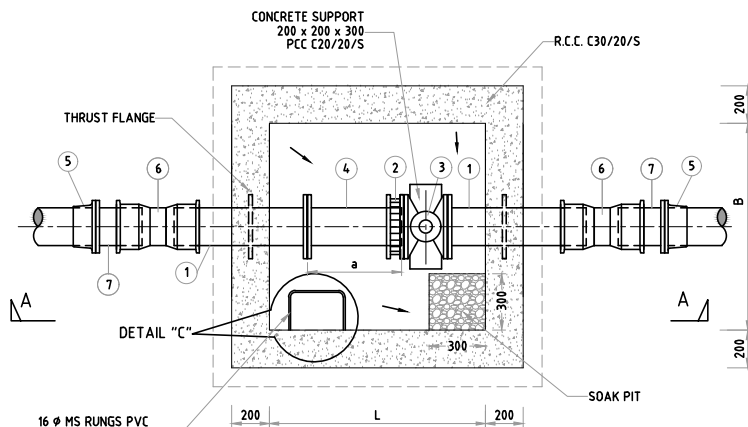
REINFORCEMENT DETAILS AT SECTION A-A
SCALE 1:20

DIMENSIONS OF VALVE CHAMBER

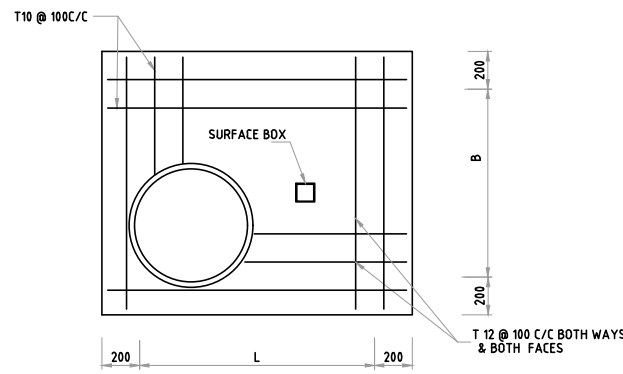
DIA OF PIPE (D)	L	B	a
200	1150	1100	500
250	1600	1200	250

SCHEDULE OF SPECIALS AND FITTINGS

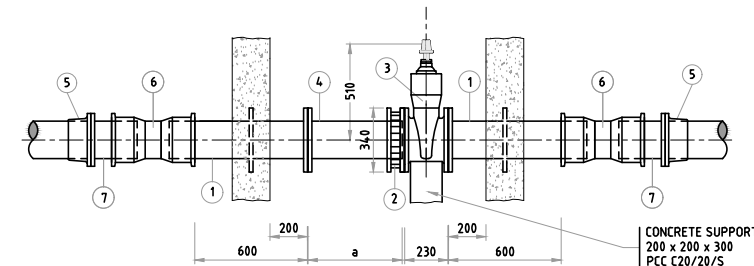
ITEM	SPECIALS AND FITTINGS	QTY
1	DI FLANGED SPIGOT PIPE WITH WELDED THRUST FLANGE	2
2	FLANGE ADAPTOR	1
3	DI GATE VALVE	1
4	DI FLANGED-SPIGOT PIECE	1
5	DI/PE ADAPTOR	2
6	DI COLLAR	2
7	DI SHORT LENGTH FLANGED SPIGOT PIECE	2



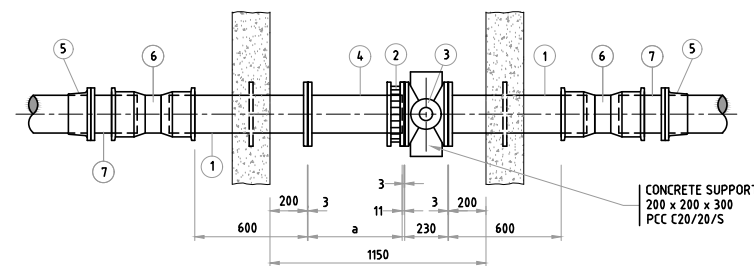
SECTION PLAN B-B
SCALE 1:20



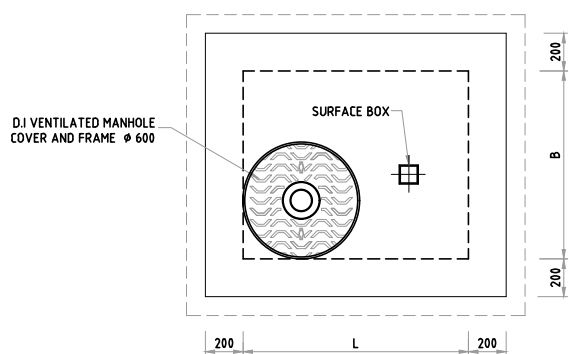
REINFORCEMENT DETAILS OF COVER SLAB
SCALE 1:20



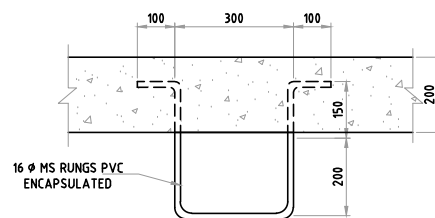
ELEVATION



PLAN
GENERAL ARRANGEMENT OF VALVE & FITTINGS FOR Ø200 PIPE
SCALE 1:20



ROOF PLAN
SCALE 1:20



DETAIL - C
T16 MS RUNGS PVC ENCAPSULATED
SCALE 1:10

- All dimensions are in mm
- For location and depths of Gate Valve chamber refer to drawings of pipeline plans and profiles.
- The specials and pipe fittings shall be selected to suit the supply pipe line
- All the valves, specials and pipes inside the chamber shall be of Ductile iron
- Gate Valve shall comply with BS 5150
- DI pipe & Fitting shall comply with BS 4772
- Building materials:-
Description of building materials is as follows
Compressive strength of concrete C 30 / 20 / S
Sulphate resistant cement
Maximum size of aggregate

- Concrete:
a. mixes shall comply with BS 8110
b. minimum 28 day characteristic strength in accordance with BS 8110
- Cover to reinforcement to be 50mm,
- The steel used shall be of fy 350 grade.
- The tanking shall be with two layers of Bituminous Paint for external surfaces of Valve chamber
- Gate Valve Chamber to be provided for Pipe dia 200 to 300 mm
- MH Cover Should Comply to BS EN 124 Class D400

ABBREVIATIONS
PIL - PIPE INVERT LEVEL.
MS - MILD STEEL.
DI - DUCTILE IRON.
PE - POLY ETHYLENE
RCC -REINFORCED CEMENT CONCRETE
PCC - PLAIN CEMENT CONCRETE

TENDER PURPOSE

				CLIENT MINISTRY OF ENVIRONMENT AND ENERGY MALE' REPUBLIC OF MALDIVES			
				PROJECT PROVISION OF RAINWATER HARVESTING SYSTEM IN 10 ISLANDS			
				ASSIGNMENT CONSULTANCY SERVICES FOR DESIGN AND SUPERVISION OF RAINWATER HARVESTING SYSTEM IN HA, UTHEEMU, HA, MULHADHOO, HA, MURADHOO, HA, ULIGAMU, HA, MAARANDHOO, HA, FILLADHOO, HDH, FINEY, HDH, KURINBI, HDH, NEYKURENDHOO, HDH, HIRIMARADHOO, MALDIVES [PACKAGE - 1]			
				DRAWING TITLE STANDARD DRAWING OF SLUICE VALVE CHAMBER			
REVISION				APPROVED SSS CHECKED SSS DESIGNED SPP DRAWN PDP			
CONSULTANT IN ASSOCIATION WITH SHAH TECHNICAL CONSULTANTS PVT. LTD., INDIA DEVELOPMENT TECHNOLOGIES MALDIVES, MALDIVES				SCALE AS SHOWN DATE FEB 2018 DRAWING NUMBER WS/STD/03 REVISION 0			