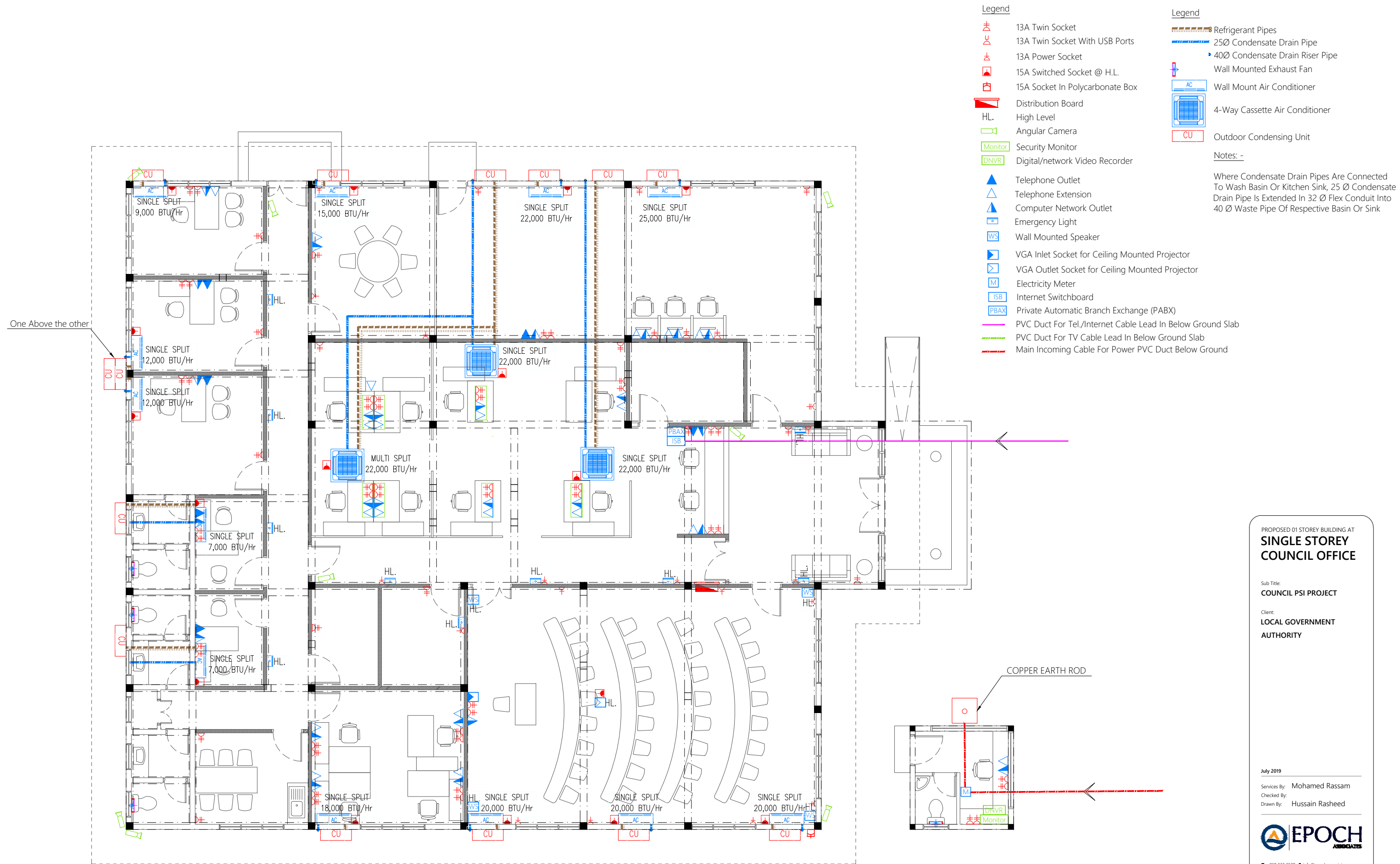


BUILDING SERVICES DRAWINGS OF
PROPOSED SINGLE STOREY
COUNCIL OFFICE

For LOCAL GOVERNMENT AUTHORITY

By Epoch Associates Pvt. Ltd





GROUND FLOOR POWER AND ACV LAYOUT

1:100

PROPOSED 01 STOREY BUILDING AT
**SINGLE STOREY
COUNCIL OFFICE**

Sub Title:
COUNCIL PSI PROJECT

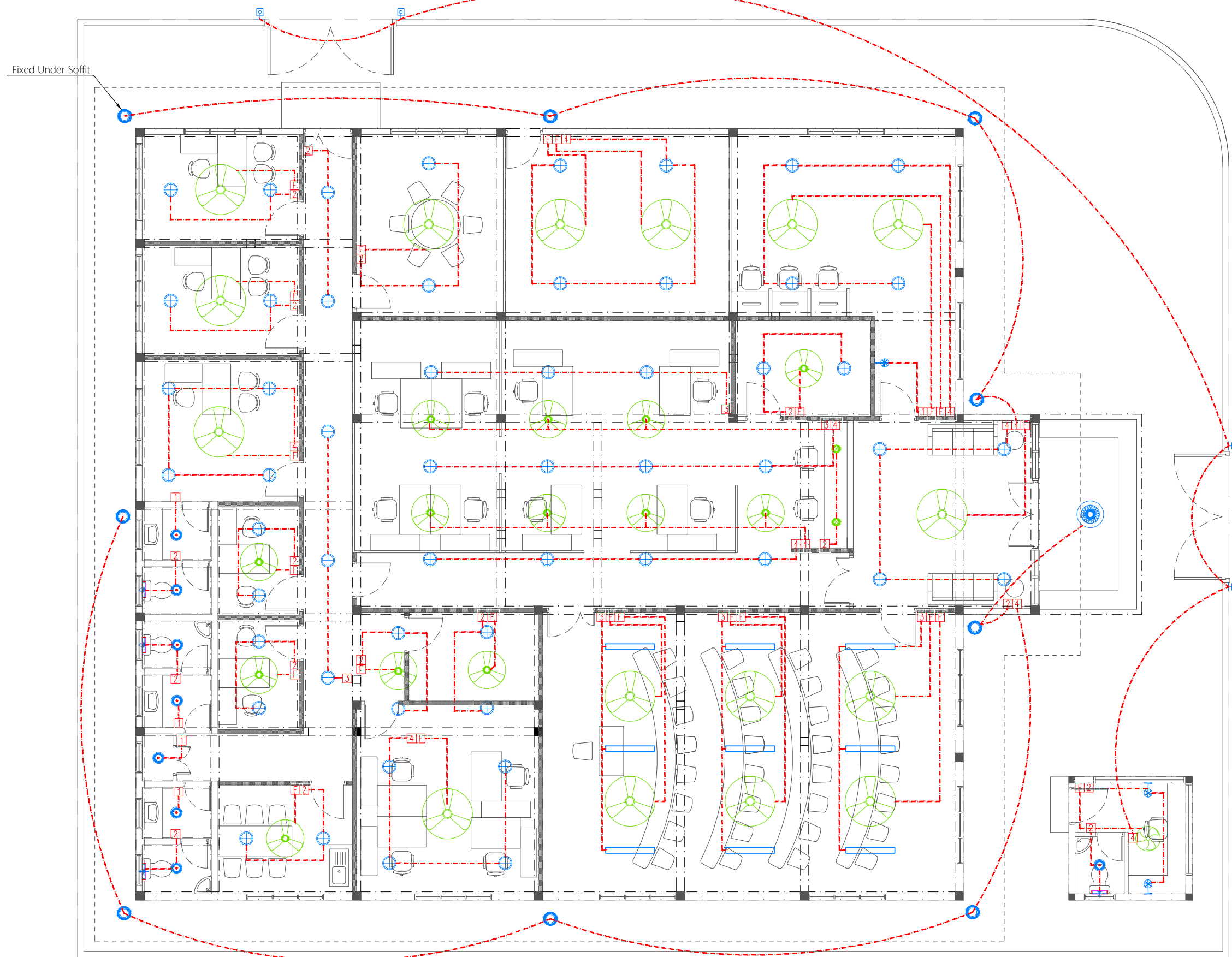
Client:
**LOCAL GOVERNMENT
AUTHORITY**

July 2019
Services By: **Mohamed Rassam**
Checked By:
Drawn By: **Hussain Rasheed**



T: +960 333 3528 E: info@epoch.associates
W: www.epoch.associates A: M. Abigailshughe
Fareedhee Magu Male' Republic of Maldives

Rev: --- Page: ---
PAC-01



Legend

- Ceiling Light (12W)
- Recessed Ceiling Light (12W)
- Ceiling Down Light (18W) - Weather Proof
- 150 X 1200 Ceiling Recessed LED Panel
- Indoor Wall Light (18W)
- Outdoor Lamp (12W)
- Decorative Pendant Light
- Ceiling Mount Spot Light (5W)
- Light Switch (1 Gang - 4 Gang)
- Ceiling Fan Switch With Controller
- 29" To 36" Ceiling Fan
- 42" To 48" Ceiling Fan
- Wall Mounted Exhaust Fan

PROPOSED 01 STOREY BUILDING AT SINGLE STOREY COUNCIL OFFICE

Sub Title:
COUNCIL PSI PROJECT

Client:
LOCAL GOVERNMENT
AUTHORITY

July 2019

Services By: Mohamed Rassam
Checked By:
Drawn By: Hussain Rasheed

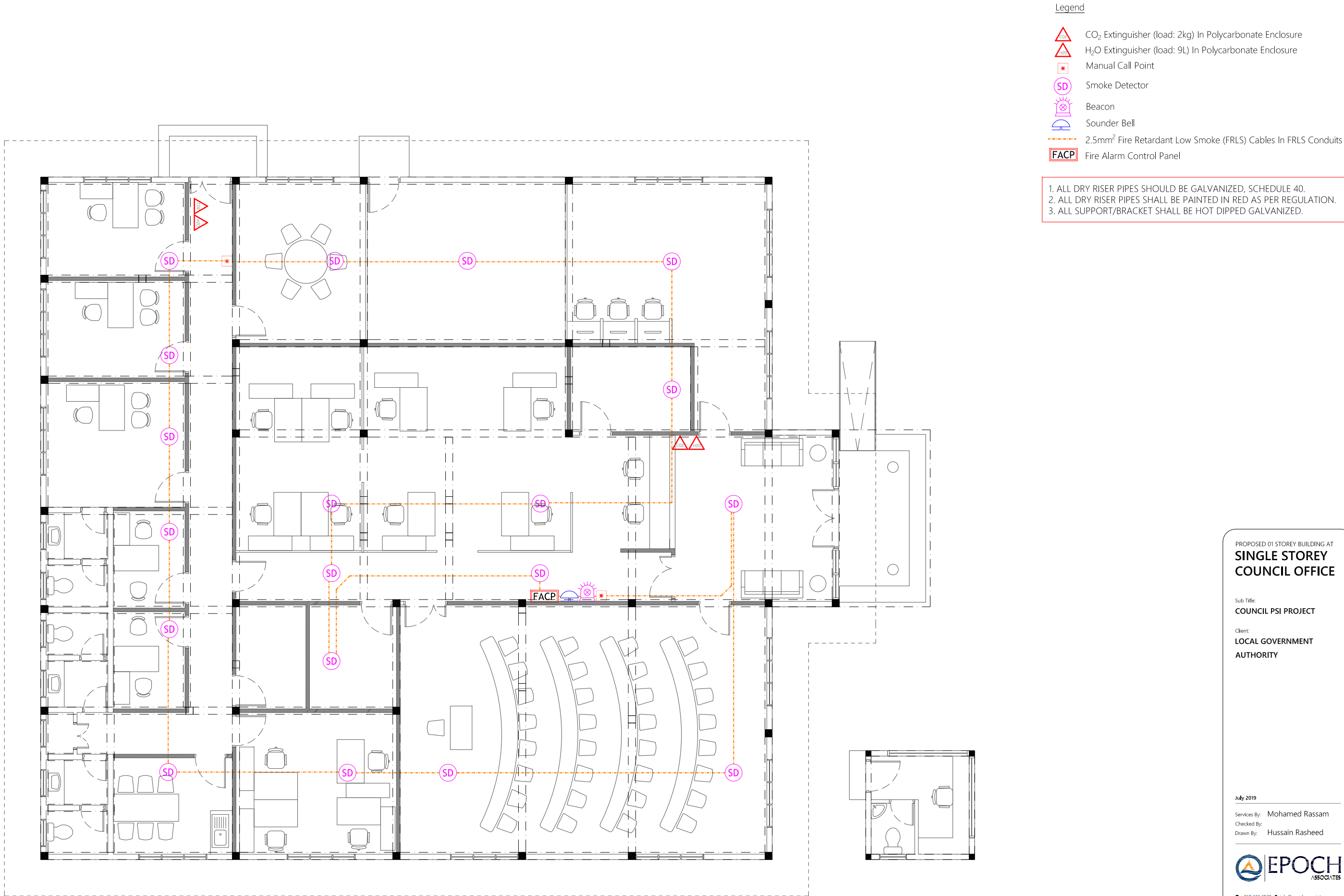


T: +960 333 3528 E: info@epoch.associates
W: www.epoch.associates A: M. Abigashhathuge,
Fareedhee Magu Male' Republic of Maldives

Rev: Page:
EL-01

GROUND FLOOR LIGHTING LAYOUT

1:100



GROUND FLOOR FDP LAYOUT

1:100

PROPOSED 01 STOREY BUILDING AT
**SINGLE STOREY
COUNCIL OFFICE**

Sub Title:
COUNCIL PSI PROJECT

Client:
**LOCAL GOVERNMENT
AUTHORITY**

July 2019

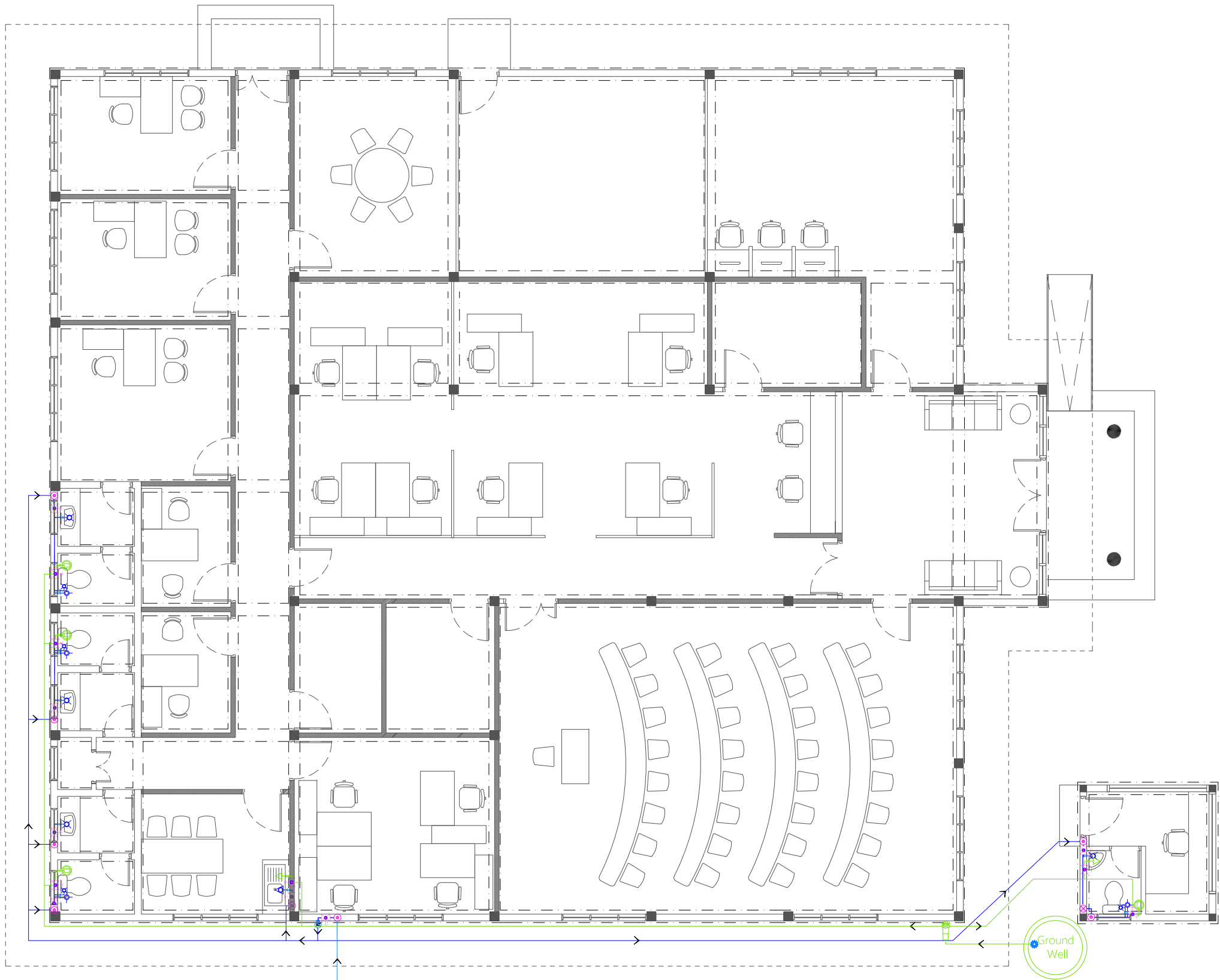
Services By: Mohamed Rassam
Checked By:
Drawn By: Hussain Rasheed



T: +960 333 3528 E: info@epoch.associates
W: www.epoch.associates A: M. Algasimhoshuge,
Fareedhee Magu, Male' Republic of Maldives

Rev: Page:
..... FDP-01
.....

- Legend
- 16Ø Cold Water Supply To Basin Faucet
 - 16Ø Cold Water Supply To Sink Tap
 - 16Ø Cold Water Supply To Bidet Shower
 - 16Ø Cold Water Supply To Cistern
 - Gate Valve
 - Rise In Wall
 - Drop In Wall
 - MWSC/FENAKA Meter
 - 20Ø Cold Water Supply Pipes Running Underground
 - 20Ø Cold Water Supply Pipes Running In Wall
 - 20Ø Cold Water Supply Pipes Running Underground
 - 20Ø Ground Water Supply (GWS) Pipe
 - Foot Valve With Strainer
 - Well Water Pump
 - 16Ø Ground Water Supply To Sink Tap
 - 16Ø Ground Water Supply To Cistern



PIPE FROM MAINS SUPPLY

GROUND FLOOR PLUMBING LAYOUT

1:100

PROPOSED 01 STOREY BUILDING AT
**SINGLE STOREY
COUNCIL OFFICE**

Sub Title:
COUNCIL PSI PROJECT

Client:
**LOCAL GOVERNMENT
AUTHORITY**

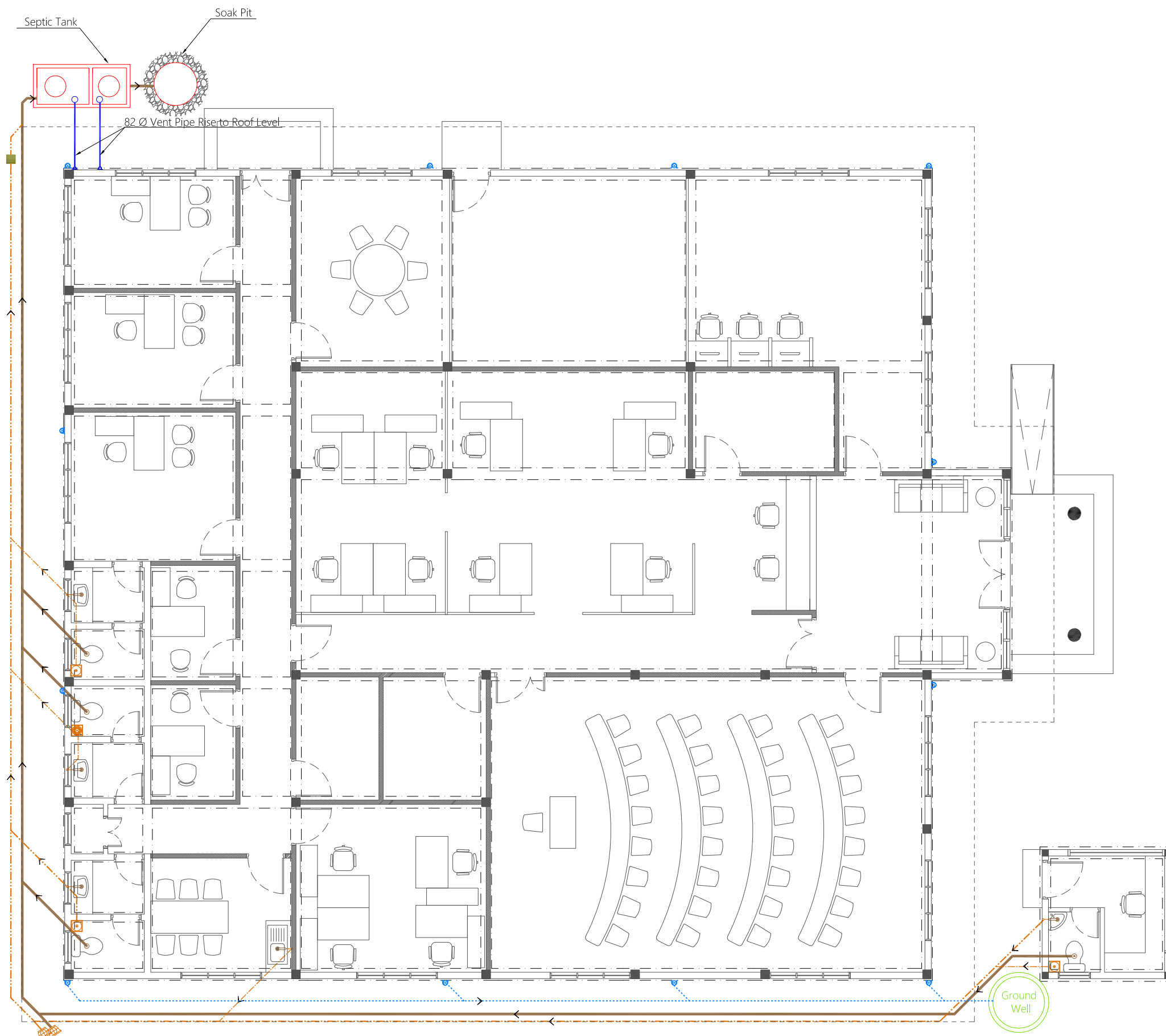
July 2019

Services By: Mohamed Rassam
Checked By:
Drawn By: Hussain Rasheed



T: +960 333 3528 E: info@epoch.associates
W: www.epoch.associates A: M. Algasidhoshuge,
Fareedhee Kilege, Male' Republic of Maldives

Rev:	Page:
---	---
---	---
---	PL-01



- Legend
- Floor Drain
 - Floor Gully
 - 40Ø Stub For Washing Machine Or Tub
 - 82Ø Soil Pipe (uPVC Pipe)
 - 82Ø Soil Vent Pipe (uPVC Pipe)
 - 63Ø Waste Pipe (uPVC Pipe)
 - 63Ø Waste Vent Pipe (uPVC Pipe)
 - 40Ø Waste Pipe (uPVC Pipe)
 - 50Ø Manhole Vent Pipe (uPVC Pipe)
 - 110Rain Water Pipes (uPVC Pipe)
 - Gully Trap
 - 110Ø Rainwater Outlet
 - Clean Out Point
 - Bottle Trap

Notes: -

- All Drainage Pipes Should Have At A Slope Of 1/150
- All Floor Drains Should Have 'P' Traps

PROPOSED 01 STOREY BUILDING AT
SINGLE STOREY COUNCIL OFFICE

Sub Title:
COUNCIL PSI PROJECT

Client:
LOCAL GOVERNMENT AUTHORITY

July 2019

Services By: Mohamed Rassam
Checked By:
Drawn By: Hussain Rasheed

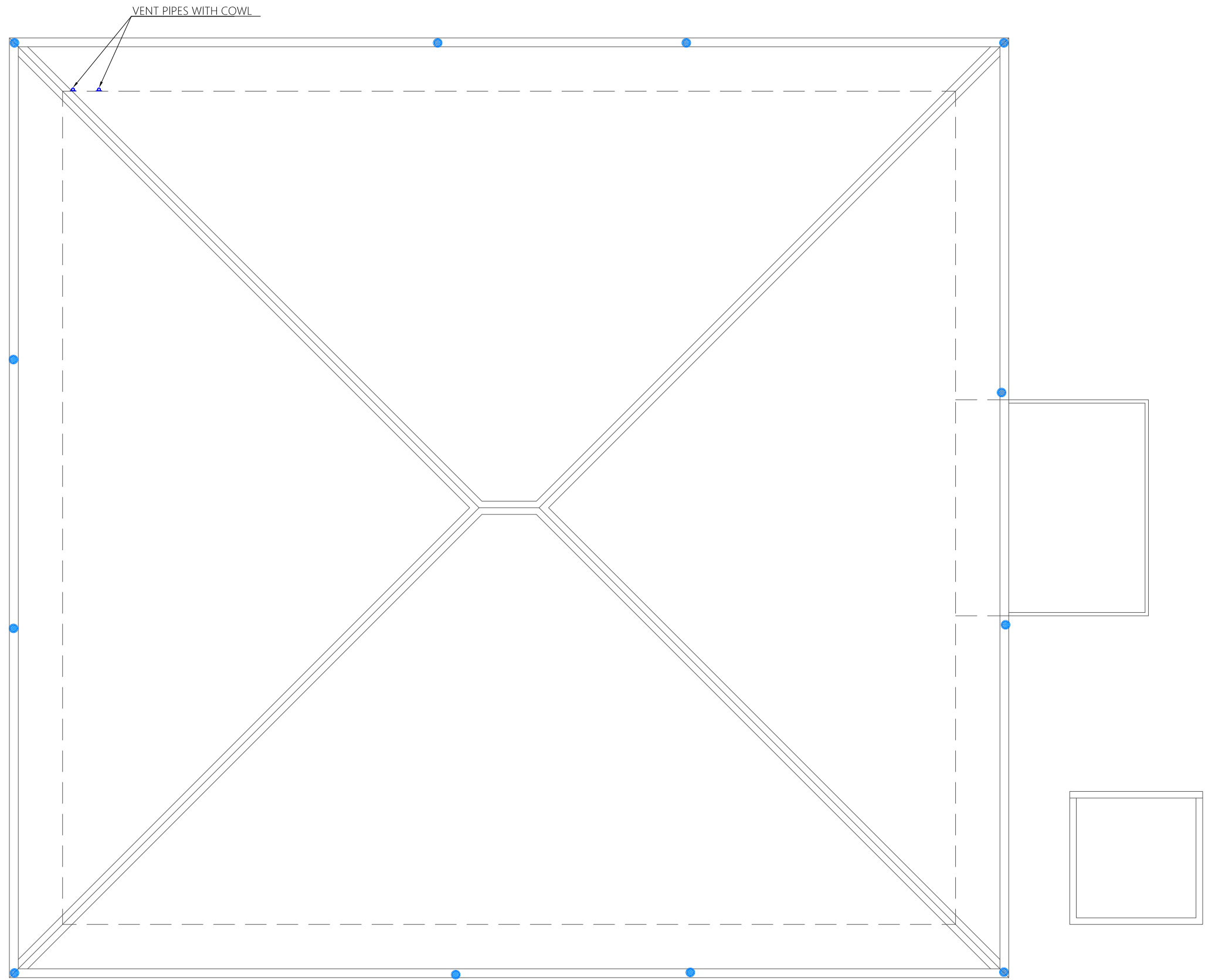
EPOCH ASSOCIATES

T: +960 333 3528 E: info@epoch.associates
W: www.epoch.associates, A. M. Alhasan@epoch.associates
F: +960 333 3528 E: info@epoch.associates

Rev:	Page:
---	---
---	---
---	DR-01

GROUND FLOOR DRAINAGE LAYOUT

1:100



- Legend
- Floor Drain
 - Floor Gully
 - 400 Stub For Washing Machine Or Tub
 - 82Ø Soil Pipe (uPVC Pipe)
 - 82Ø Soil Vent Pipe (uPVC Pipe)
 - 63Ø Waste Pipe (uPVC Pipe)
 - 63Ø Waste Vent Pipe (uPVC Pipe)
 - 40Ø Waste Pipe (uPVC Pipe)
 - 40Ø Waste Vent Pipe (uPVC Pipe)
 - 50Ø Manhole Vent Pipe (uPVC Pipe)
 - 110Rain Water Pipes (uPVC Pipe)
 - Gully Trap
 - 110Ø Rainwater Outlet
 - Clean Out Point
 - Bottle Trap

Notes: -

- All Drainage Pipes Should Have At A Slope Of 1/150
- All Floor Drains Should Have 'P' Traps

ROOF DRAINAGE LAYOUT

1:100

PROPOSED 01 STOREY BUILDING AT

SINGLE STOREY

COUNCIL OFFICE

Sub Title:

COUNCIL PSI PROJECT

Client:

LOCAL GOVERNMENT

AUTHORITY

July 2019

Services By: Mohamed Rassam

Checked By:

Drawn By: Hussain Rasheed

EPOCH
ASSOCIATES

T: +960 333 3528 E: info@epoch.associates

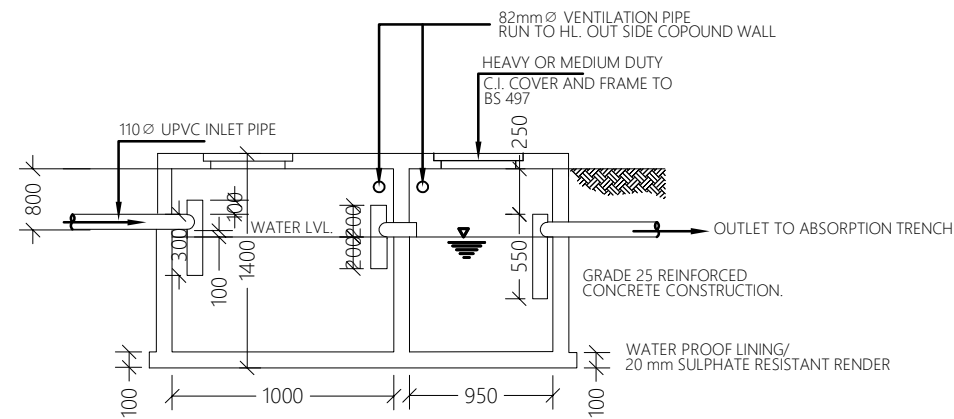
W: www.epoch.associates, A: M. Aligassidhoshuge,

Farandhee Malu, Malé Republic of Maldives

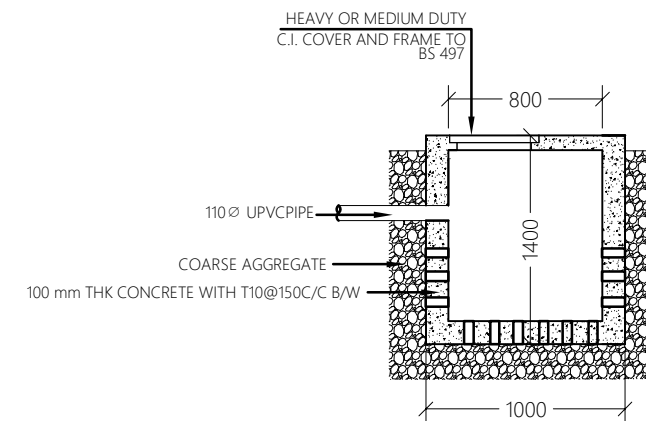
Rev:

Page:

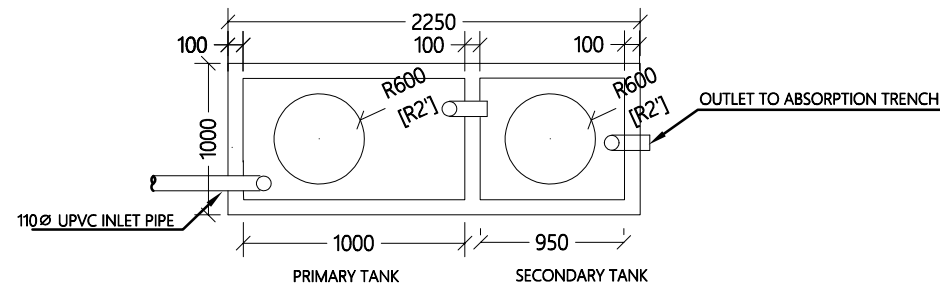
DR-02



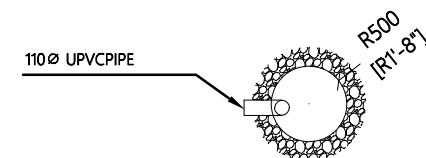
SEPTIC TANK SECTION



ABSORPTION TRENCH SECTION



SEPTIC TANK PLAN



ABSORPTION TRENCH PLAN