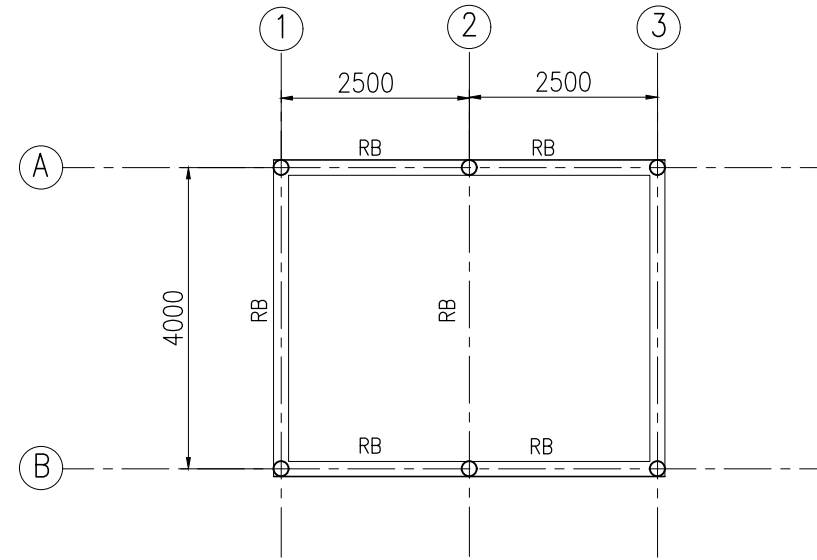
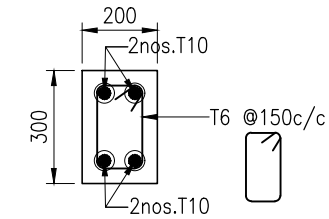


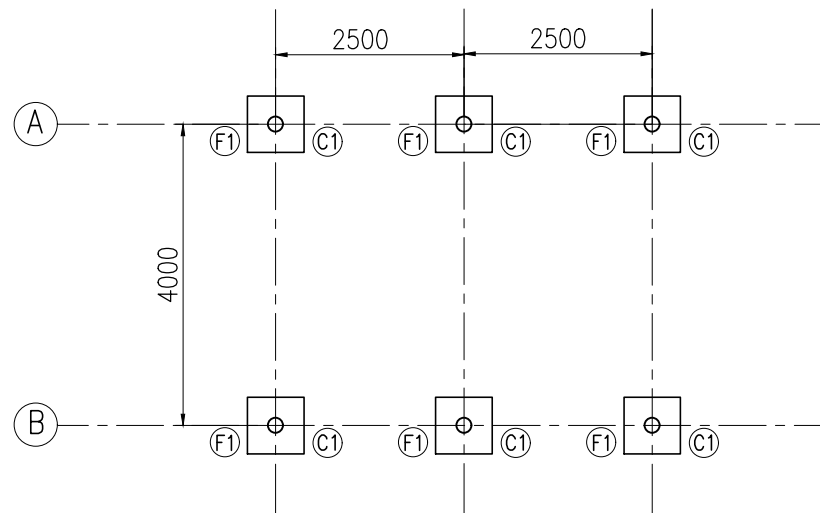
PLINTH BEAMS LAYOUT



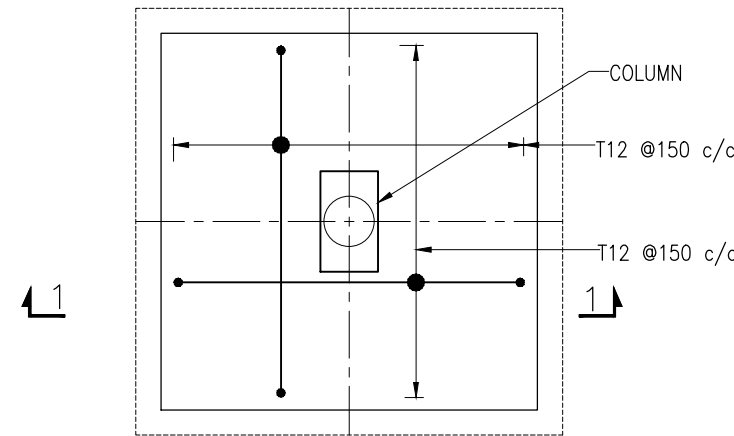
ROOF BEAMS LAYOUT  
100x150 GI RHS BEAM



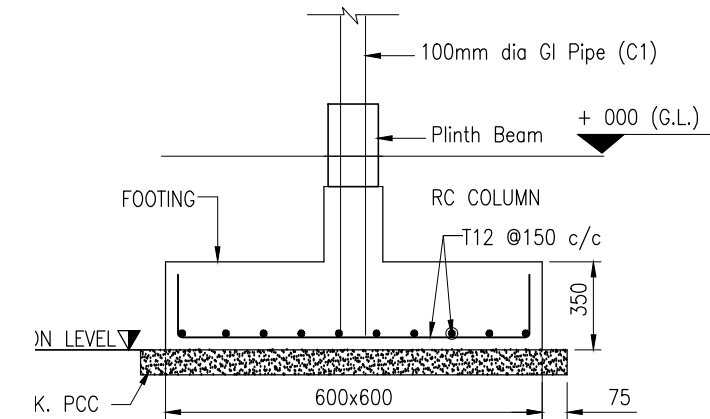
RCC DETAILS OF PLINTH BEAMS  
(SCALE 1:20)



PLAN OF COLUMNS & FOOTINGS



PLAN OF FOOTING  
(F1)  
(SCALE 1:30)



SECTION 1-1  
(SCALE 1:30)



VIVEK V. PAGNIS  
(STRUCTURAL ENGINEER)

TENDER PURPOSE

1. ALL DIMENSIONS ARE IN MM UNLESS AND OTHERWISE SPECIFIED.

				CLIENT	MINISTRY OF ENVIRONMENT AND ENERGY MALE REPUBLIC OF MALDIVES			
				PROJECT	PROVISION OF RAINWATER HARVESTING SYSTEM IN 10 ISLANDS			
				ASSIGNMENT	CONSULTANCY SERVICES FOR DESIGN AND SUPERVISION OF RAINWATER HARVESTING SYSTEM IN HA, UTHEEMU, HA, MULHADHOO, HA, MURADHOO, HA, ULJAMU, HA, MAARANDHOO, HA, FILLADHOO, HDH, FINEY, HDH, KURINBI, HDH, NEYKURENDHOO, HDH, HIRIMARADHOO, MALDIVES [PACKAGE - 1]			
No.	DESCRIPTION	BY	DATE	APPR.	DRAWING TITLE			
REVISION					TYPICAL DRAWING OF HOUSION SHED (Sheet 2 of 2)			
CONSULTANT					APPROVED	CHECKED	DESIGNED	DRAWN
IN ASSOCIATION WITH					VVP	SSS	SPP	PDP
SHAH TECHNICAL CONSULTANTS PVT. LTD., INDIA					SCALE	DATE	DRAWING NUMBER	REVISION
DEVELOPMENT TECHNOLOGIES MALDIVES, MALDIVES					AS SHOWN	FEB 2018	WS/TYP/02-2	0