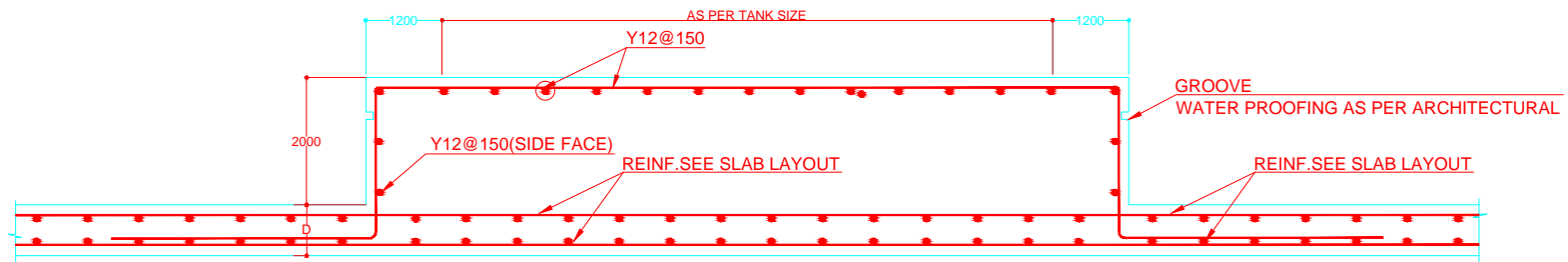




PLAN GRP WATER TANK

1. Size : 3000x4000x3000mm



TYP.R.C DETAIL FOR ABOVE GROUND GRP TANK

	CLIENT: MINISTRY OF ENVIRONMENT AND ENERGY	CONSULTANCY SERVICES FOR DESIGN OF WATER SUPPLY FACILITIES IN Ha.HORAFUSHI, Hdn.HANIMAADHOO,Sh.MILANDHOO,R.UNGGOFAARU,Lh.NAIFARU,Dh.KUDAHUVADHOO ,Th.GURAI DHOO AND Ga.VILLINGILI , MALDIVES	DESIGN	DRAWN	CHECKED	APPROVED	SL.NO	DRWING NO	DESCRIPTION
			ENGINEER		DESIGN CHIEF				
	GREENTECH CONSULTANTS (Pvt.) Ltd IN ASSOCIATION WITH DEVELOPMENT COLLABORATION PARTNERSHIP (Pvt.) Ltd MALDIVES AND OPTIMUM SOLOUTIONS (Pvt) Ltd, MALDIVES	GRP WATER TANK HOARAFUSHI	DATE	DRG.NO: HOARAFUSHI/RO/04					
				SCALE: NOT TO SCALE					