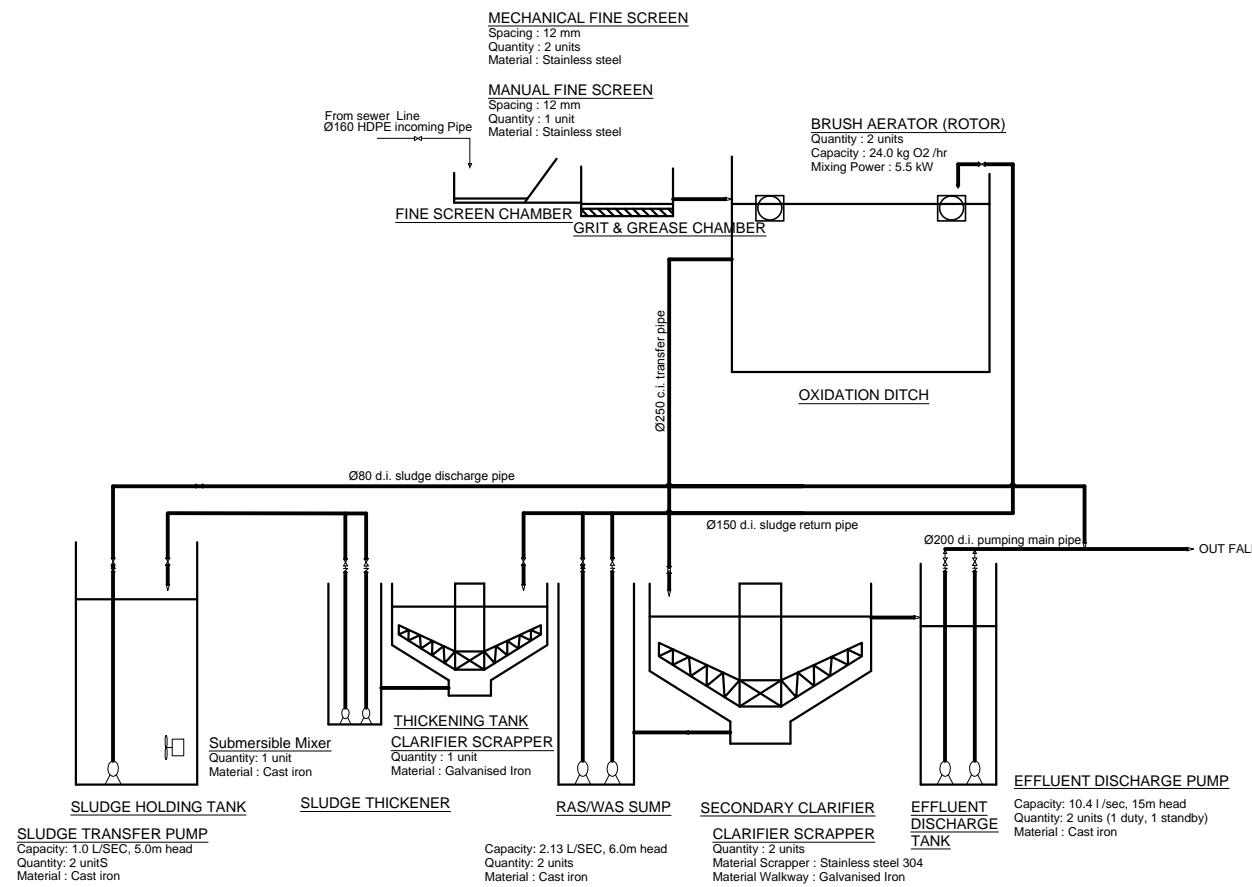
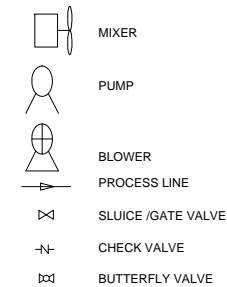


OXIDATION DITCH SYSTEM
SCHEMATIC FLOW DIAGRAM AND MASS BALANCE



PROCESS & INSTRUMENTATION DIAGRAM (P & ID)

NOTES:-

- 1- ALL DIMENSIONS ARE IN METERS.
- 2- SITE LEVELS ARE TO BE COORDINATED BY THE CONTRACTOR.
- 3- PUMPED LINES/ PRESSURE LINES TO USE HDPE PIPES. OTHER FLOW LINES TO USE UPVC PIPES.
- 4- CONTRACTOR TO PREPARE DETAILED DRAWING AND OBTAIN APPROVAL OF MEEW BEFORE START OF CONSTRUCTION.
- 5- LAYOUT OF COMPACT UNIT WASTE WATER TREATMENT PLANT FOR VELIDHOO ISLAND AVERAGE FLOW $Q = 365 \text{ m}^3/\text{Day}$ EXPANDABLE UPTO $700 \text{ m}^3/\text{Day}$.
- 6- SLUDGE STABILIZED, DIGESTED AND DISINFECTED FROM TANK (C) CAN BE PERIODICALLY (ONCE MONTHLY) PUMPED THROUGH EFFLUENT OCEAN DISPOSAL PIPE LINE.
- 7- IF RAW SEWAGE CAN BE PUMPED DIRECTLY TO SPLITTER BOX FROM LIFTING STATIONS, UNIT (A) (COLLECTION WELL) CAN BE AVOIDED. (AS PER MANUFACTURES SPEC.)
- 8- ALL SITE LEVELS TO BE COORDINATED BY THE CONTRACTOR AND WRITTEN APPROVED FROM MEEW TO BE OBTAINED BEFORE START OF WORK.
- 9- ALL DIMENSIONS ARE INDICATIVE. CONTRACTOR MAY PROPOSE CWWIP TO FIT WITHIN THE PLOT BOUNDARY.
- 10- THE SIZES FOR UNITS A & B, C & D ARE INDICATIVE ONLY
- 11- THE PIPE DIMENSIONS REPRESENT IN OUTSIDE DIAMETER (O.D).

LEGEND:-


- (A) COLLECTION WELL WITH SCREEN, GRIT & GREASE REMOVAL FACILITY
- (B) COMPACT WASTE WATER TREATMENT UNIT (INCLUDES AERATION AND SETTLING)
- (C) SLUDGE TANK
- (D) EFFLUENT TANK WITH EFFLUENT DISPOSAL PUMP
- (E) SEA OUTFALL
- (F) 1.2m PAVEMENT ALL ACROSS THE TREATMENT FACILITY.
- (G) 1m HIGH LANDSCAPING (BUSH)
- (H) STANDARD MALDIVES PALM TREE.

REFERENCE DRAWINGS

SL.No	DRAWING No.	DESCRIPTION

..
..
..
..
0	05-09-15	DETAILED DESIGN SUBMISSION	JP	SS	MA
REV.	DATE	DESCRIPTION	DRAWN	CHKD	APPRD.

REVISION

CLIENT
 MINISTRY OF ENVIRONMENT & ENERGY REPUBLIC OF MALDIVES

CONSULTANT:
 Al-Habshi Consultants Office Tel.: 2430103 / 2433131 - Fax: 2431136 P.O.Box 27154 Safat 13132 - Kuwait

PROJECT:
Provision of Water Supply Facilities in 04 islands and Sewerage Facilities in 05 islands - N.Velidhoo Island - Republic of Maldives

DRAWING TITLE:
PID OF COMPACT SEWERAGE TREATMENT UNIT-N.VELIDHOO ISLAND

DESIGNED	DRAWN	CHECKED	APPROVED	SCALE	DATE
SK	JP	SS	MA	N.T.S	05-09-15
PROJECT No.	SHEET No.	DRAWING No.			
K-619	1 OF 1	NV-SW-116			
REV. No.	0				