

TEMPORARY HQ

HDH.HANIMAADHOO

SHEET CONTENT:

RECOM. APPROVAL:

COL. AHMED SHARIM

COMMANDING OFFICER

DESIGN APPROVAL:

BG. HAMID SHAFEEQ

COMMANDANT, SERVICE CORPS

APPROVED:

MG. ABDULLA SHAMAAL

CHIEF OF DEFENCE FORCE

DESIGNED:

WO2. ALI MUTHASIM

Architectural

WO2. AHMED SHAZEEL

Structural

CHECKED:

COL. AHMED SHARIM

COMMANDING OFFICER

DRAWN:

WO2. ALI MUTHASIM

REVISION:


DATE: 22/12/2022

DATE:

SCALE:

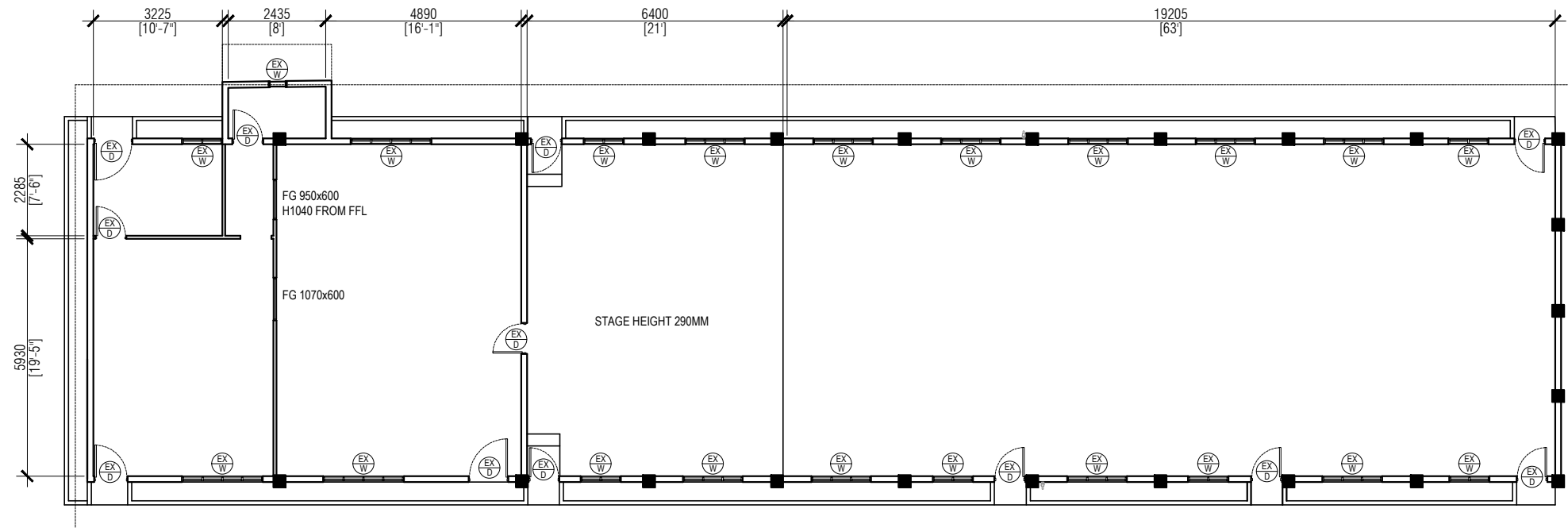
AS SHOWN

SHEET NO:



MILITARY ENGINEERS
MALDIVES NATIONAL DEFENCE FORCE
Male', Republic of Maldives

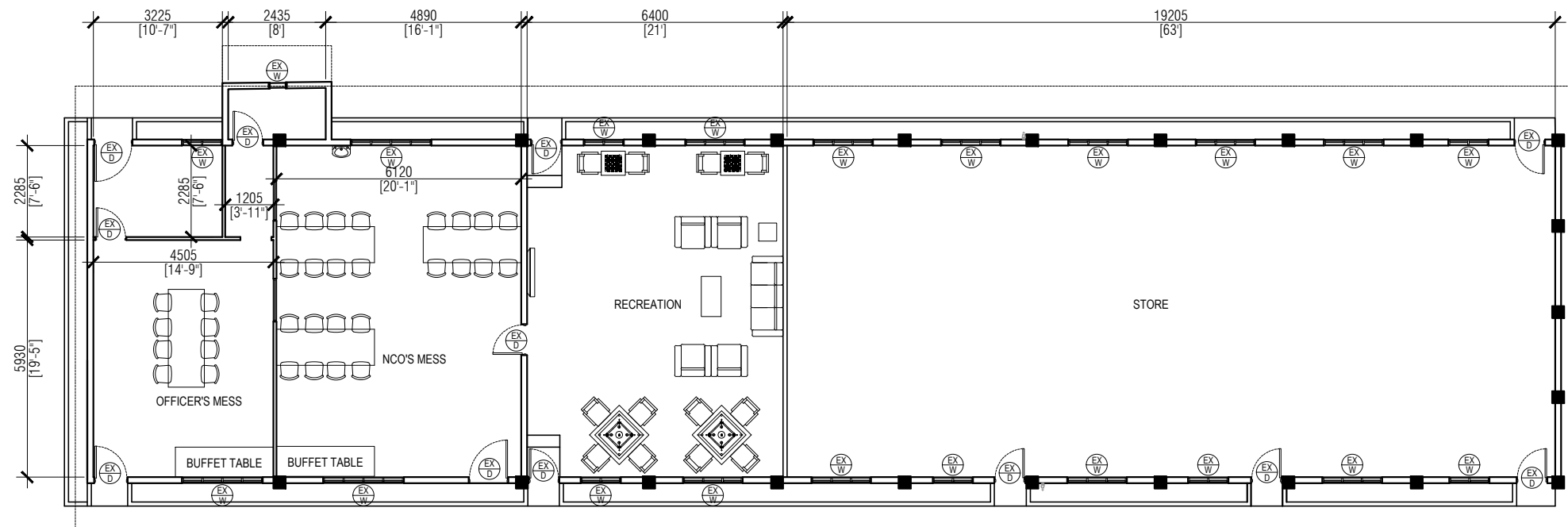
The drawings, concept and design contained are the properties of Military Engineers, MNDF. Use of any kind or copy of whole or part of this drawing, concept or design or use on other projects or sites other than that specified on this drawing is strictly prohibited.



B-BLOCK EXISTING FLOOR PLAN

SCALE 1:150

NOTE:
-FLOOR HEIGHT 3300MM
EX W EXISTING WINDOW
EX D EXISTING DOOR



B-BLOCK PROPOSED FLOOR PLAN

SCALE 1:150

NOTE:
-FLOOR HEIGHT 3300MM
EX W EXISTING WINDOW
EX D EXISTING DOOR

TEMPORARY HQ

HDH.HANIMAADHOO

SHEET CONTENT:

RECOM. APPROVAL:

COL. AHMED SHARIM

COMMANDING OFFICER

DESIGN APPROVAL:

BG. HAMID SHAFEEQ

COMMANDANT, SERVICE CORPS

APPROVED:

MG. ABDULLA SHAMAAL

CHIEF OF DEFENCE FORCE

DESIGNED:

WO2. ALI MUTHASIM

Architectural

WO2. AHMED SHAZEEL

Structural

CHECKED:

COL. AHMED SHARIM

COMMANDING OFFICER

DRAWN:

WO2. ALI MUTHASIM

DATE: 22/12/2022

SCALE:

AS SHOWN

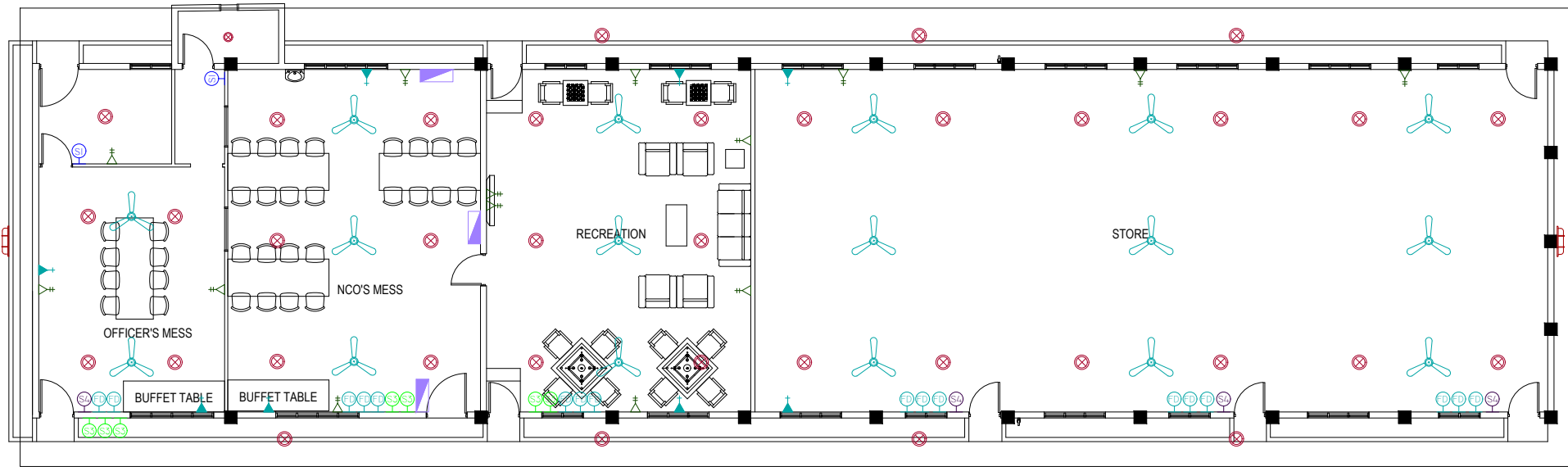
REVISION:

DATE:

SHEET NO:



The drawings, concept and design contained are the properties of Military Engineers MNDF. Use of any kind or copy of whole or part of this drawing, concept or design or use on other projects or sites other than that specified on this drawing is strictly prohibited.



B-BLOCK LIGHTING & ELECTRICAL OUTLET LAYOUT

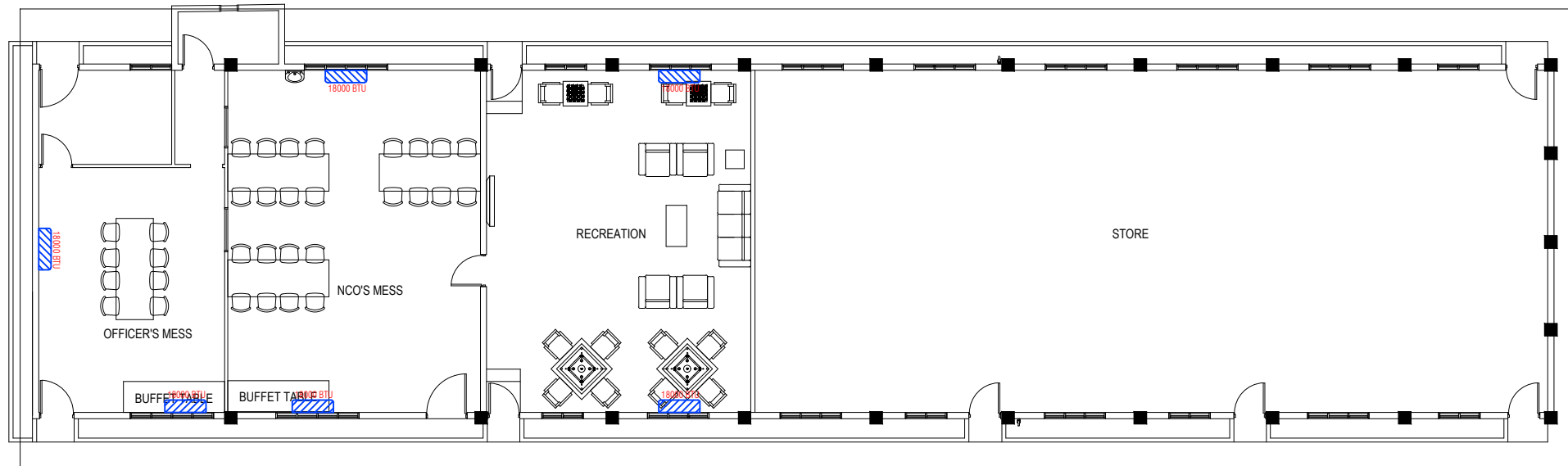
SCALE 1:150

LEGEND:

SYMBOL	QTY	DESCRIPTION
	36	CEILING MOUNT LED LIGHT 18W DAY LIGHT (ROUND)
	01	CEILING MOUNT LED LIGHT 12W DAY LIGHT (ROUND)
	02	LED OUTDOOR LIGHT 12W, WARM WHITE
	17	CEILING FAN 48" (KDK)
	02	SWITCH 1 GANG
	07	SWITCH 3GANG
	04	SWITCH 4 GANG
	17	FAN DIMMER
	03	DISTRIBUTION BOARD
	08	SOCKET SWITCH SINGLE 15A, (ABB / CLIPSAL)
	14	SOCKET SWITCH DOUBLE 13A, (ABB / CLIPSAL)

NOTE:

- ALL SWITCHES @1200MM FROM FFL
- FLOOR HEIGHT 3300MM



B-BLOCK AC LAYOUT

SCALE 1:150

LEGEND:

SYMBOL	QTY	DESCRIPTION
	06	WALL MOUNT AC INDOOR UNIT (18000BTU)

TEMPORARY HQ

HDH.HANIMAADHOO

SHEET CONTENT:

RECOM. APPROVAL:

COL. AHMED SHARIM

COMMANDING OFFICER

DESIGN APPROVAL:

BG. HAMID SHAFEEQ

COMMANDANT, SERVICE CORPS

APPROVED:

MG. ABDULLA SHAMAAL

CHIEF OF DEFENCE FORCE

DESIGNED:

WO2. ALI MUTHASIM

Architectural

WO2. AHMED SHAZEEL

Structural

CHECKED:

COL. AHMED SHARIM

COMMANDING OFFICER

DRAWN:

WO2. ALI MUTHASIM

DATE: 22/12/2022

SCALE:

AS SHOWN

REVISION:

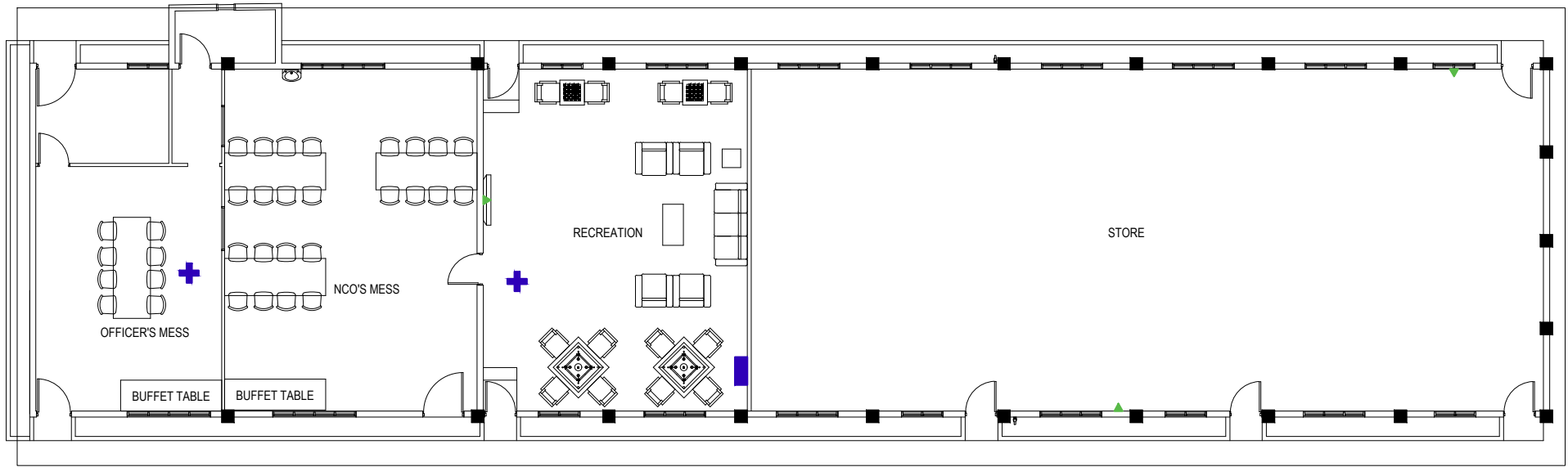
DATE:

SHEET NO:



MILITARY ENGINEERS
MALDIVES NATIONAL DEFENCE FORCE
Male', Republic of Maldives

The drawings, concept and design contained are the properties of Military Engineers MNDF. Use of any kind or copy of whole or part of this drawing, concept or design or use on other projects or sites other than that specified on this drawing is strictly prohibited.



B-BLOCK ICT NETWORK LAYOUT

SCALE 1:150

LEGEND:

SYMBOL QTY DESCRIPTION

- +

02

WIRELESS ACCESS POINT
- ▲

03

DUAL NETWORK PORT
- 01

12U WALL MOUNT RACK

TEMPORARY HQ
HDH.HANIMAADHOO

SHEET CONTENT:

RECOM. APPROVAL:

COL. AHMED SHARIM
COMMANDING OFFICER

DESIGN APPROVAL:

BG. HAMID SHAFEEQ
COMMANDANT, SERVICE CORPS

APPROVED:

MG. ABDULLA SHAMAAL
CHIEF OF DEFENCE FORCE

DESIGNED:

WO2. ALI MUTHASIM
Architectural

WO2. AHMED SHAZEEL
Structural

CHECKED:

COL. AHMED SHARIM
COMMANDING OFFICER

DRAWN:	REVISION:
WO2. ALI MUTHASIM	
DATE: 22/12/2022	DATE:
SCALE:	SHEET NO:
AS SHOWN	



MILITARY ENGINEERS
MALDIVES NATIONAL DEFENCE FORCE
Male', Republic of Maldives

The drawings, concept and design contained are the properties of Military Engineers MNDF . Use of any kind or copy of whole or part of this drawing, concept or design or use on other projects or sites other than that specified on this drawing is strictly prohibited.