

PROJECT TITLE:

NAIFARU POLICE ACCOMMODATION

APPROVED

DESIGN APPROVED BY:

RECOMMENDATION APPROVED

THE DRAWINGS,CONCEPT AND DESIGN CONTAINED AREA
THE PROPERTIES OF MALDIVES POLICE SERVICE.USE OF
ANY KIND OR COPY OF WHOLE OR PART OF THIS
DRAWING CONCEPT OR USE ON OTHER
PROJECTS OR SITES OTHER THAN THAT SPECIFIED ON
THIS DRAWINGS IS STRICTLY PROHIBITED

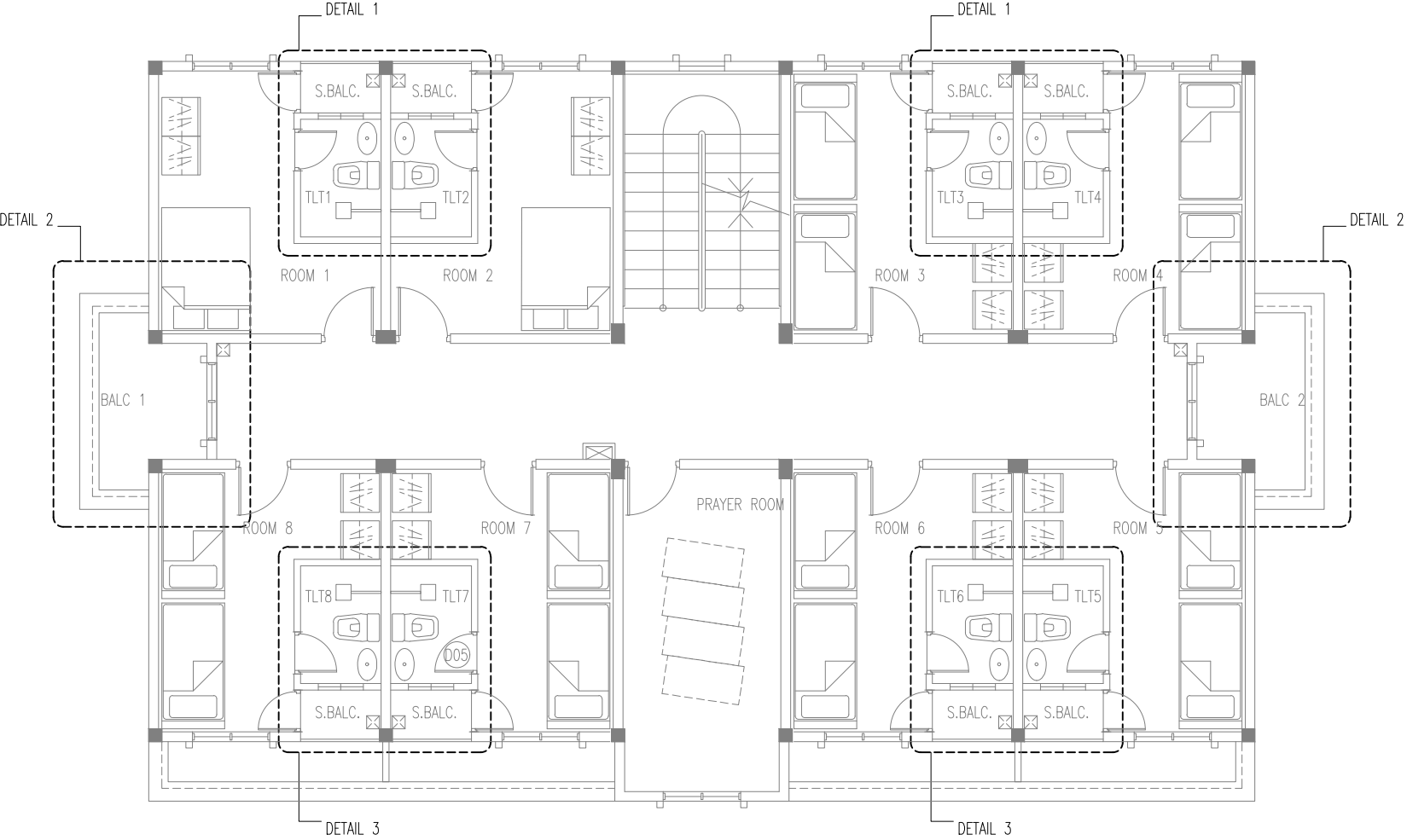
ARCHITECT/DESIGNER	DRAFTED BY
ASSISTANT DIRECTOR AHMED SADHEEM	SUB INSP OF POLICE MOHAMED FALAAH

STRUCTURAL ENGINEER	DRAFTED BY
SUB INSP OF POLICE FAZEEN	SUB INSP OF POLICE MOHAMED FALAAH

CHECKED BY	CHECKED BY
ASSISTANT DIRECTOR AHMED SADHEEM	SUB INSP OF POLICE AHMED NIZAL

ARCHITECTURAL DRAWINGS	
SHEET NO.	DATE: 19 AUG 2021

P-03



FIRST FLOOR PLUMBING LAYOUT

SCALE 1:100