

B.EYDHAFUSHI - HOSPITAL BLOCK

ARCHITECTURAL DRAWING

Client: Ministry of Health

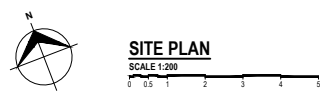


RIYAN PRIVATE LIMITED
t: +963375349 f: +963370775
e: info@riyan.com.nv
w: www.riyan.com.nv
Floor, H. Azumi, Ameenemogai, Malé

The contents of these drawings remain as a property of Riyan Private Limited. Any use other than those expressly stated is a violation of this copyright

TABLE OF CONTENTS

DRAWING No.	TITLE	REVISION No.	DATE	REMARKS
A R C H I T E C T U R A L				
AR - 01/13	SITE PLAN	---	---	---
AR - 02/13	GROUND FLOOR PLAN	---	---	---
AR - 03/13	FIRST FLOOR PLAN	---	---	---
AR - 04/13	SECOND FLOOR PLAN	---	---	---
AR - 05/13	THIRD FLOOR PLAN	---	---	---
AR - 06/13	TERRACE FLOOR PLAN	---	---	---
AR - 07/13	ROOF PLAN	---	---	---
AR - 08/13	SECTION X-X	---	---	---
AR - 09/13	ELEVATIONS	---	---	---
AR - 10/13	DOOR / WINDOW SCHEDULE 01	---	---	---
AR - 11/13	DOOR / WINDOW SCHEDULE 02	---	---	---
AR - 12/13	DETAILS	---	---	---
AR - 13/13	DETAILS	---	---	---
S T R U C T U R A L				
	GENERAL NOTES	---	---	---
	FOUNDATION PLAN	---	---	---
	GROUND FLOOR COLUMN PLAN	---	---	---
	FIRST FLOOR COLUMN PLAN	---	---	---
	SECOND FLOOR COLUMN PLAN	---	---	---
	THIRD FLOOR COLUMN PLAN	---	---	---
	TERRACE FLOOR COLUMN PLAN	---	---	---
	FIRST FLOOR BEAM PLAN	---	---	---
	SECOND FLOOR BEAM PLAN	---	---	---
	THIRD FLOOR BEAM PLAN	---	---	---
	TERRACE FLOOR BEAM PLAN	---	---	---
	FIRST FLOOR SLAB REINFORCEMENT PLAN	---	---	---
	SECOND - THIRD FLOOR SLAB REINFORCEMENT PLAN	---	---	---
	TERRACE FLOOR SLAB REINFORCEMENT PLAN	---	---	---
	ROOF SLAB REINFORCEMENT PLAN	---	---	---
	FIRST FLOOR SLAB BOTTOM REINFORCEMENT PLAN	---	---	---
	SECOND - THIRD FLOOR SLAB BOTTOM REINFORCEMENT PLAN	---	---	---
	TERRACE FLOOR SLAB BOTTOM REINFORCEMENT PLAN	---	---	---
	GROUND FLOOR TO HALF LANDING RAMP REINFORCEMENT PLAN	---	---	---
	FIRST & SECOND FLOOR TO HALF LANDING RAMP REINFORCEMENT PLAN	---	---	---
	HALF LANDING TO 1ST, 2ND & 3RD FLOOR RAMP REINFORCEMENT PLAN	---	---	---
	STRUCTURAL DETAIL 01	---	---	---
	STRUCTURAL DETAIL 02	---	---	---
	STRUCTURAL DETAIL 03	---	---	---







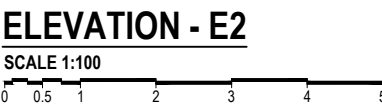
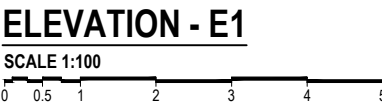






TERRACE FLOOR
SCALE 1:150





ELEMENT ID	PV1 PVC TOILET DOOR - SWING DOOR	W1a TOP HUNG WINDOW	W1b TOP HUNG WINDOW	W2a TOP HUNG WINDOW	W2b TOP HUNG WINDOW	W3a TOP HUNG WINDOW	W3b SLIDING WINDOW	W3c TOP HUNG WINDOW
QUANTITY	00	10	16	12	10	30	03	04
W x H SIZE	700 x 2000	1150 x 2700	1150 x 950	1525 x 2700	1525 x 950	2300 x 2700	2300 x 1700	2300 x 2700
SILL HEIGHT	08	0	1750	0	1750	0	1000	1750
LINTEL HEIGHT	2000	2700	2700	2700	2700	2700	2700	2700
2D SYMBOL								
ELEVATION								
FIRE RESISTANCE RATING		20 MINUTES	20 MINUTES	20 MINUTES	20 MINUTES	20 MINUTES	20 MINUTES	20 MINUTES
LOCATION	TOILET DOOR	ROOM, DEPARTMENTS, WARDS, OFFICE etc	TOILET, UTILITY, STORE, OFFICE etc	ROOM, DEPARTMENTS, WARDS, OFFICE etc	TOILET, UTILITY, STORE, OFFICE etc	ROOM, DEPARTMENTS, WARDS, OFFICE etc	CONSULTATION ROOM, ECG ROOM, OFFICE	TOILET, UTILITY, STORE, OFFICE etc
AREA	1.4 SQM	1.29 SQM	0.95 SQM	1.74 SQM	1.74 SQM	2.68 SQM	2.4 SQM	2.04 SQM
REMARKS	FRAME: 25mm THICK PVC FRAME PANEL: PVC PANEL	BLACK POWDER COATED (60 MICRONS) ALUMINUM FRAME DEPTH TO BE WIDTH OF THE WALL WITH 6mm THICK REFLECTED GLASS	BLACK POWDER COATED (60 MICRONS) ALUMINUM FRAME DEPTH TO BE WIDTH OF THE WALL WITH 6mm THICK REFLECTED GLASS	BLACK POWDER COATED (60 MICRONS) ALUMINUM FRAME DEPTH TO BE WIDTH OF THE WALL WITH 6mm THICK REFLECTED GLASS	BLACK POWDER COATED (60 MICRONS) ALUMINUM FRAME DEPTH TO BE WIDTH OF THE WALL WITH 6mm THICK REFLECTED GLASS	BLACK POWDER COATED (60 MICRONS) ALUMINUM FRAME DEPTH TO BE WIDTH OF THE WALL WITH 6mm THICK REFLECTED GLASS	BLACK POWDER COATED (60 MICRONS) ALUMINUM FRAME DEPTH TO BE WIDTH OF THE WALL WITH 6mm THICK REFLECTED GLASS	BLACK POWDER COATED (60 MICRONS) ALUMINUM FRAME DEPTH TO BE WIDTH OF THE WALL WITH 6mm THICK REFLECTED GLASS
HARWARE	LOCKSET : MORTISE LOCK, SS FINISH,DOOR HANDLE LEVER TYPE HINGE : 4X3X23mm THK. BUTT HINGE, SS FINISH (4pcs)	HINGE : TOP HUNG ARMS LOCKSET : FLAT HANDLE DOOR LATCH & SASH LOCK	HINGE : TOP HUNG ARMS LOCKSET : FLAT HANDLE DOOR LATCH & SASH LOCK	HINGE : TOP HUNG ARMS LOCKSET : FLAT HANDLE DOOR LATCH & SASH LOCK	HINGE : TOP HUNG ARMS LOCKSET : FLAT HANDLE DOOR LATCH & SASH LOCK	HINGE : TOP HUNG ARMS LOCKSET : FLAT HANDLE DOOR LATCH & SASH LOCK	LOCKSET : SLIDING WINDOW TOUCH LOCK	HINGE : TOP HUNG ARMS LOCKSET : FLAT HANDLE DOOR LATCH & SASH LOCK

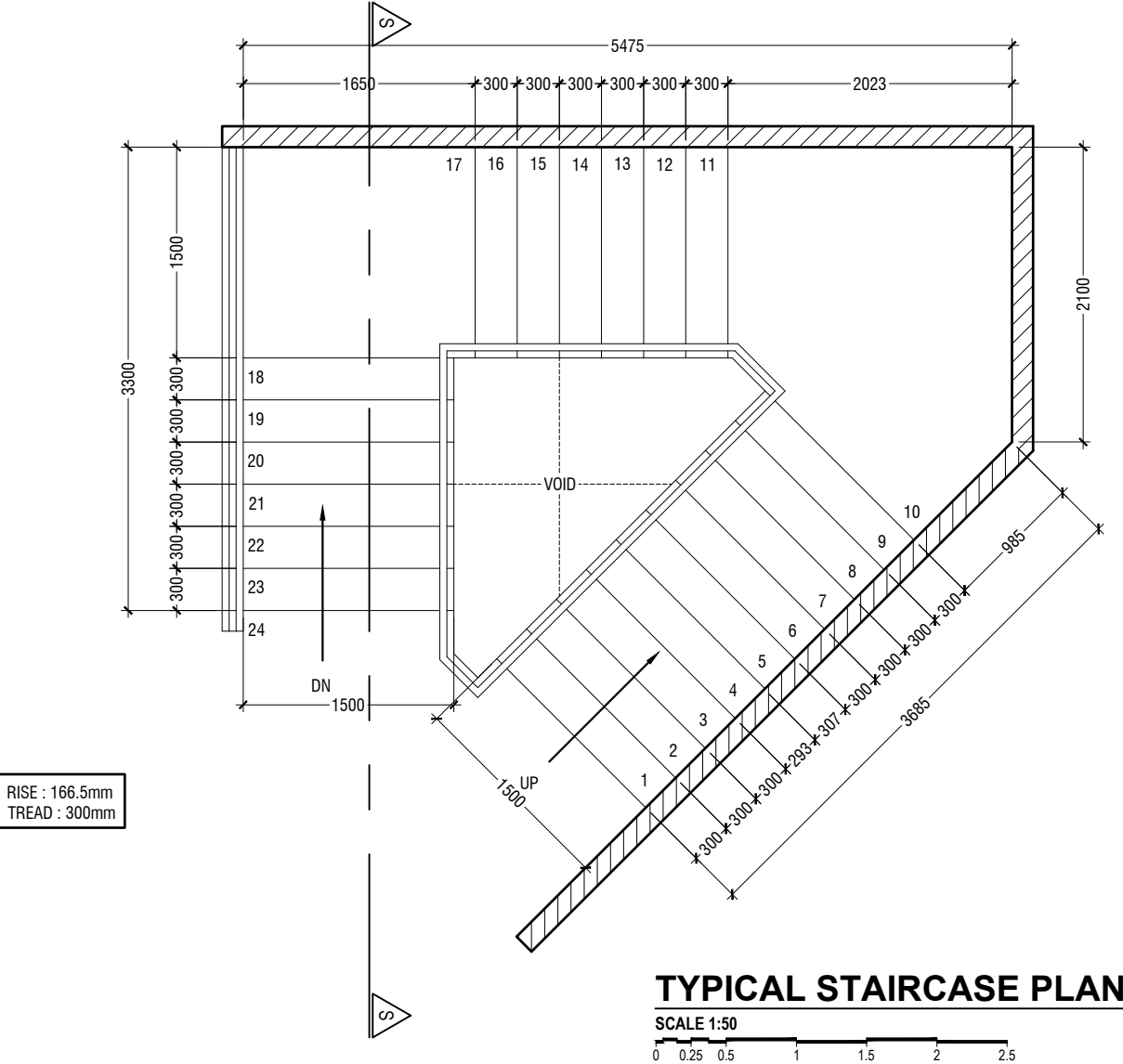
ELEMENT ID	W4a TOP HUNG WINDOW	W4b SLIDING WINDOW	W4c TOP HUNG WINDOW	W5a TOP HUNG WINDOW	W5b SLIDING WINDOW	W5c TOP HUNG WINDOW
QUANTITY	51	10	19	37	11	03
W x H SIZE	3275 x 2700	3275 x 1700	3275 x 950	2875 x 2700	2875 x 1700	2875 x 950
SILL HEIGHT	0	1000	1750	0	1000	1750
LINTEL HEIGHT	2700	2700	2700	2700	2700	2700
2D SYMBOL						
ELEVATION						
FIRE RESISTANCE RATING	20 MINUTES	20 MINUTES	20 MINUTES	20 MINUTES	20 MINUTES	20 MINUTES
LOCATION	ROOM, DEPARTMENTS, WARDS, OFFICE etc	CONSULTATION ROOM, ECG ROOM, OFFICE	TOILET, UTILITY, STORE, OFFICE etc	ROOM, DEPARTMENTS, WARDS, OFFICE etc	CONSULTATION ROOM, ECG ROOM, OFFICE	TOILET, UTILITY, STORE, OFFICE etc
AREA	3.85 SQM	3.88 SQM	2.82 SQM	3.36 SQM	3.88 SQM	2.48 SQM
REMARKS	BLACK POWDER COATED (60 MICRONS) ALUMINUM FRAME DEPTH TO BE WIDTH OF THE WALL WITH 6mm THICK REFLECTED GLASS	BLACK POWDER COATED (60 MICRONS) ALUMINUM FRAME DEPTH TO BE WIDTH OF THE WALL WITH 6mm THICK REFLECTED GLASS	BLACK POWDER COATED (60 MICRONS) ALUMINUM FRAME DEPTH TO BE WIDTH OF THE WALL WITH 6mm THICK REFLECTED GLASS	BLACK POWDER COATED (60 MICRONS) ALUMINUM FRAME DEPTH TO BE WIDTH OF THE WALL WITH 6mm THICK REFLECTED GLASS	BLACK POWDER COATED (60 MICRONS) ALUMINUM FRAME DEPTH TO BE WIDTH OF THE WALL WITH 6mm THICK REFLECTED GLASS	BLACK POWDER COATED (60 MICRONS) ALUMINUM FRAME DEPTH TO BE WIDTH OF THE WALL WITH 6mm THICK REFLECTED GLASS
HARWARE	HINGE : TOP HUNG ARMS LOCKSET : FLAT HANDLE DOOR LATCH & SASH LOCK	LOCKSET : SLIDING WINDOW TOUCH LOCK	HINGE : TOP HUNG ARMS LOCKSET : FLAT HANDLE DOOR LATCH & SASH LOCK	HINGE : TOP HUNG ARMS LOCKSET : FLAT HANDLE DOOR LATCH & SASH LOCK	LOCKSET : SLIDING WINDOW TOUCH LOCK	HINGE : TOP HUNG ARMS LOCKSET : FLAT HANDLE DOOR LATCH & SASH LOCK

NOTE:-
- ALL DOORS & WINDOWS TO BE CHECKED ON SITE BEFORE FABRICATION.
- ALL DOOR & WINDOWS VIEWED FROM EXTERIOR, FOR DOOR SWING, REFER TO FLOOR PLANS.
- INTERNAL DOORS FRAME DEPTH TO BE WIDTH OF THE WALL.
- THE DOORS / WINDOWS WHICH DO NOT TOUCH THE BEAM SHALL HAVE A LINTEL BEAM (LB)
ABOVE THE DOOR / WINDOW.
- FOR ALL THE WINDOWS PUT A SILL BEAM BELOW THE WINDOW (SB)
- FOR SAFETY PURPOSES REFER TO TECHNICAL SPECIFICATIONS FOR GLASS THICKNESS.
- ALL EXTERIOR DOORS & WINDOWS SASHES TO BE 100mm WIDE

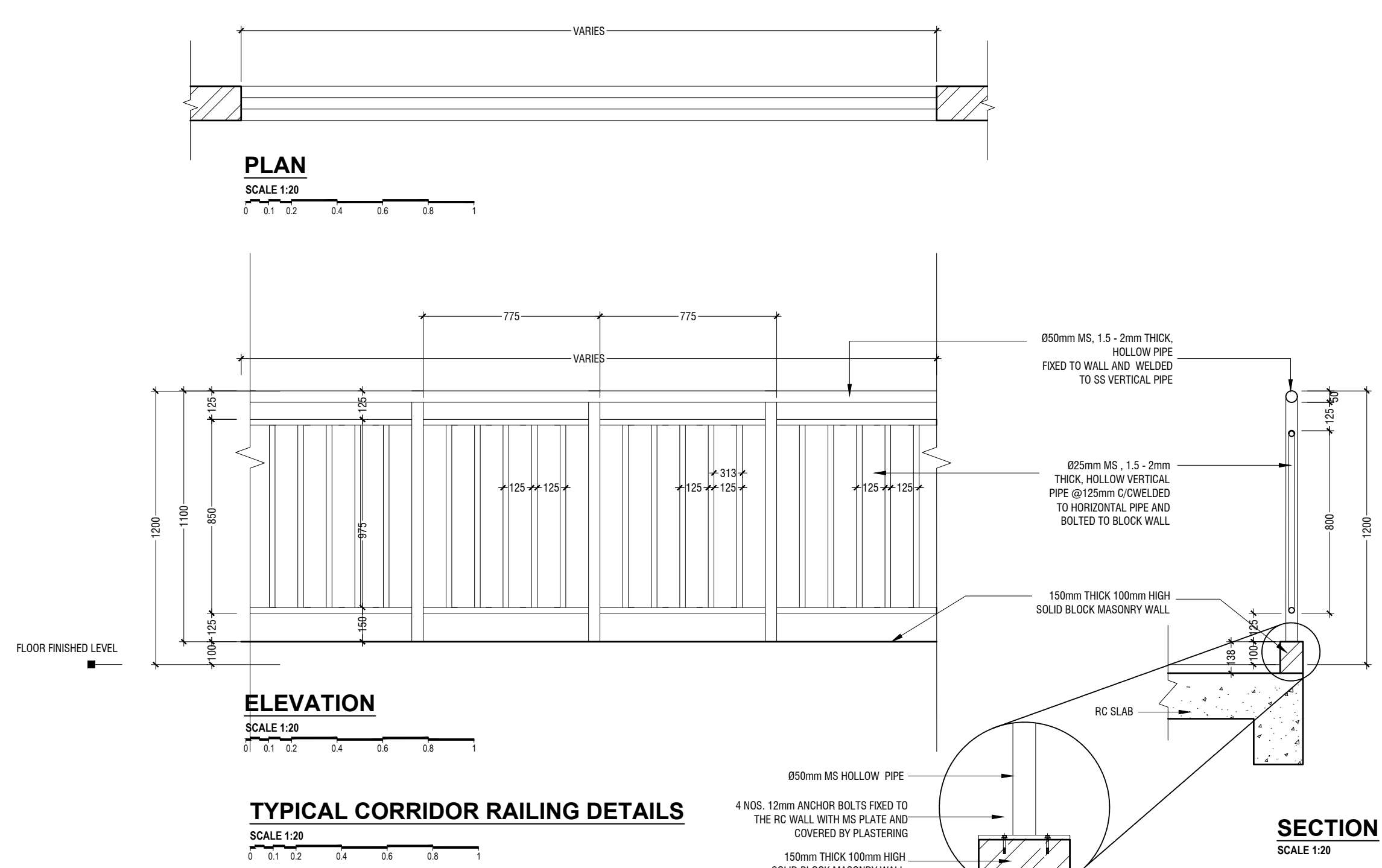
LEGEND:
MP - MARINE PLYWOOD
P - PLYWOOD
ST - SOLID TIMBER
LST - LEAD LINED SOLID TIMBER
SS - STAINLESS STEEL
AL - ALUMINUM
TG - TEMPERED GLASS
CG - CLEAR GLASS
RG - REFLECTED GLASS
FG - FROSTED GLASS
PVC - POLYVINYL CHLORIDE

DOOR / WINDOW SCHEDULE - 02

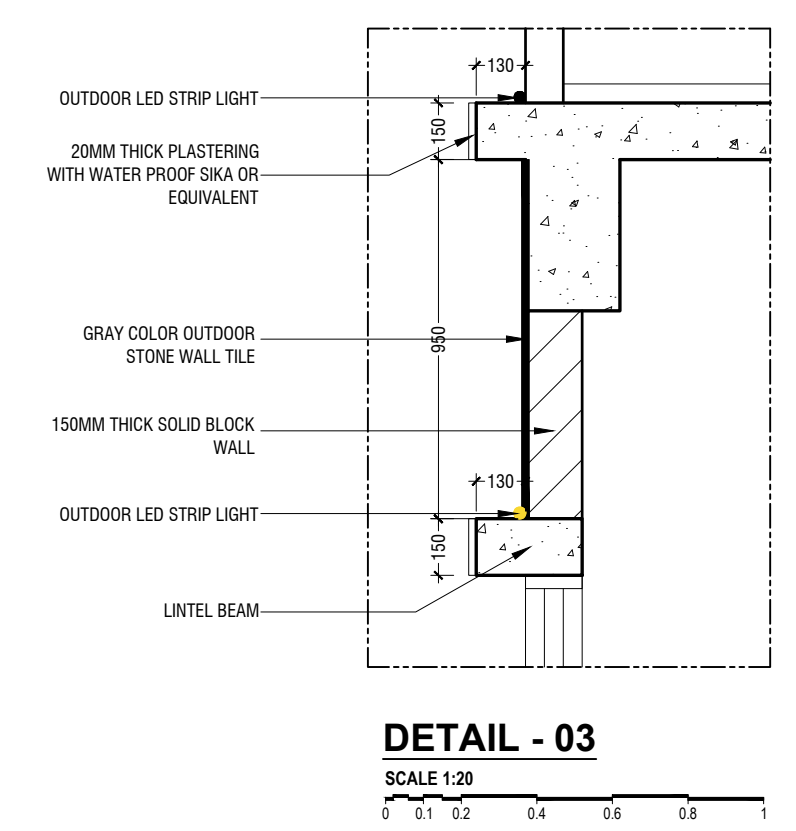
SCALE 1:50
0 0.25 0.5 1 1.5 2 2.5



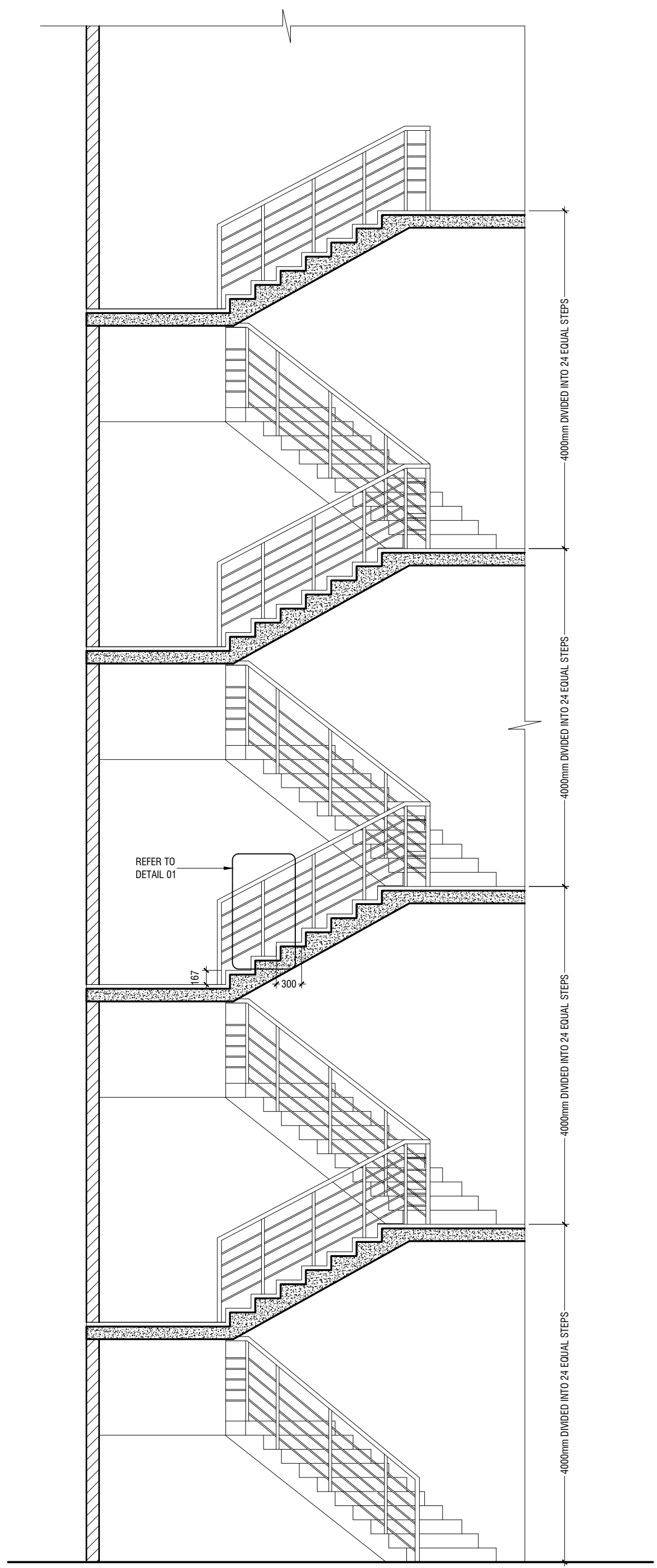
TYPICAL STAIRCASE PLAN
SCALE 1:50



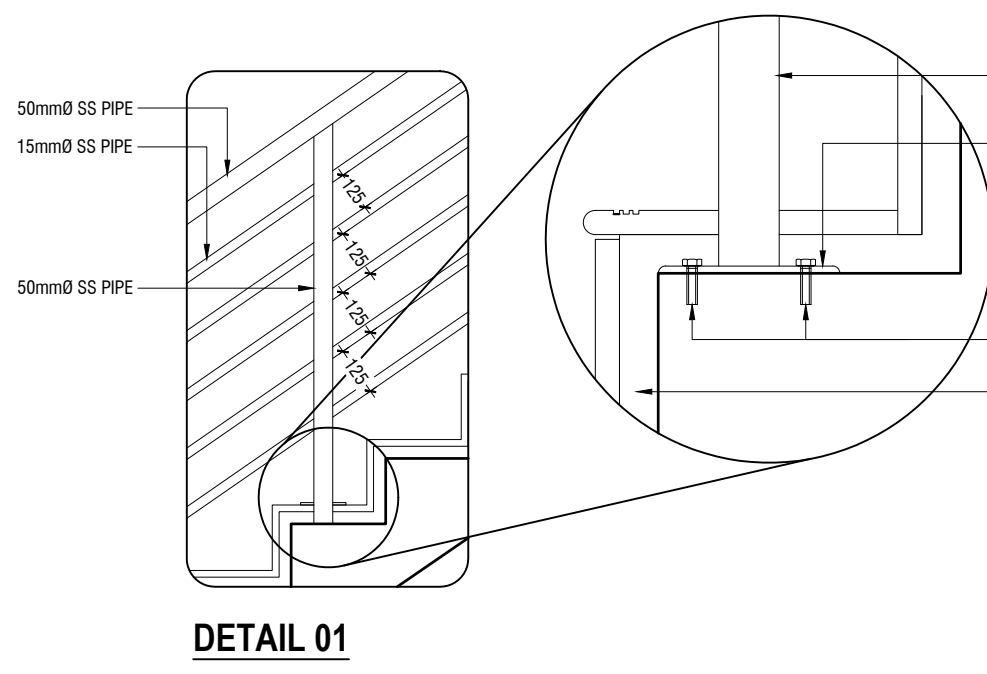
TYPICAL CORRIDOR RAILING DETAILS
SCALE 1:20



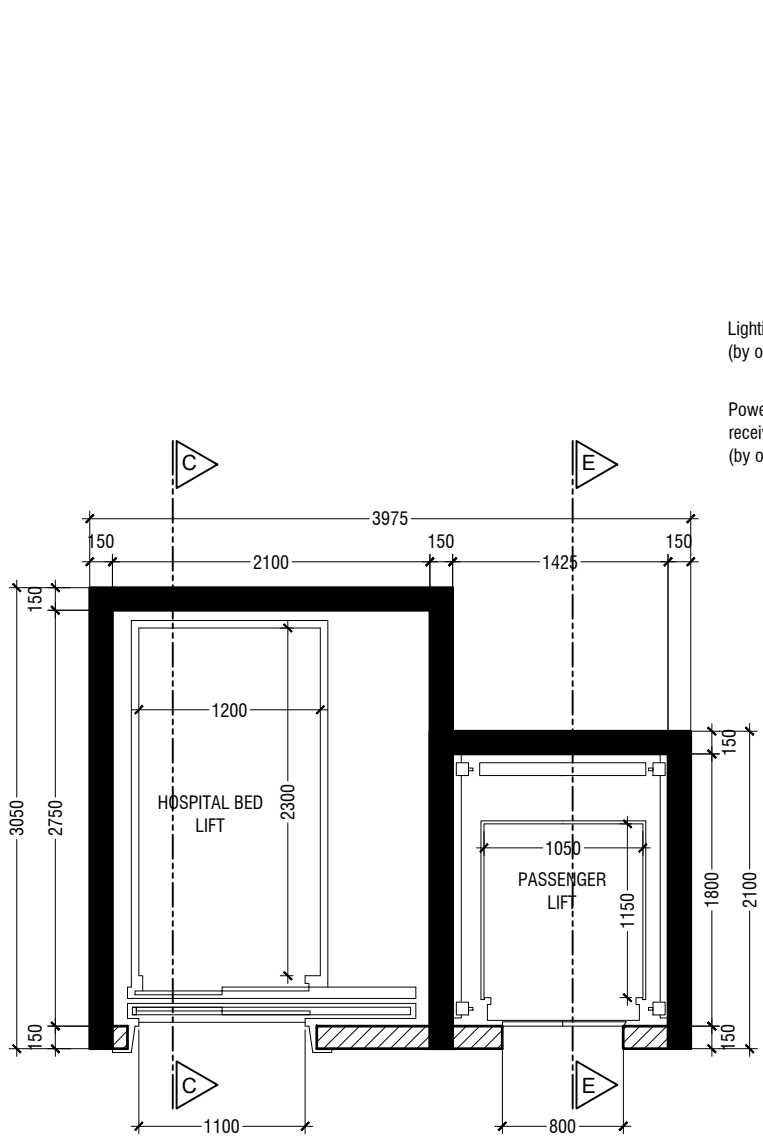
DETAIL - 03
SCALE 1:20



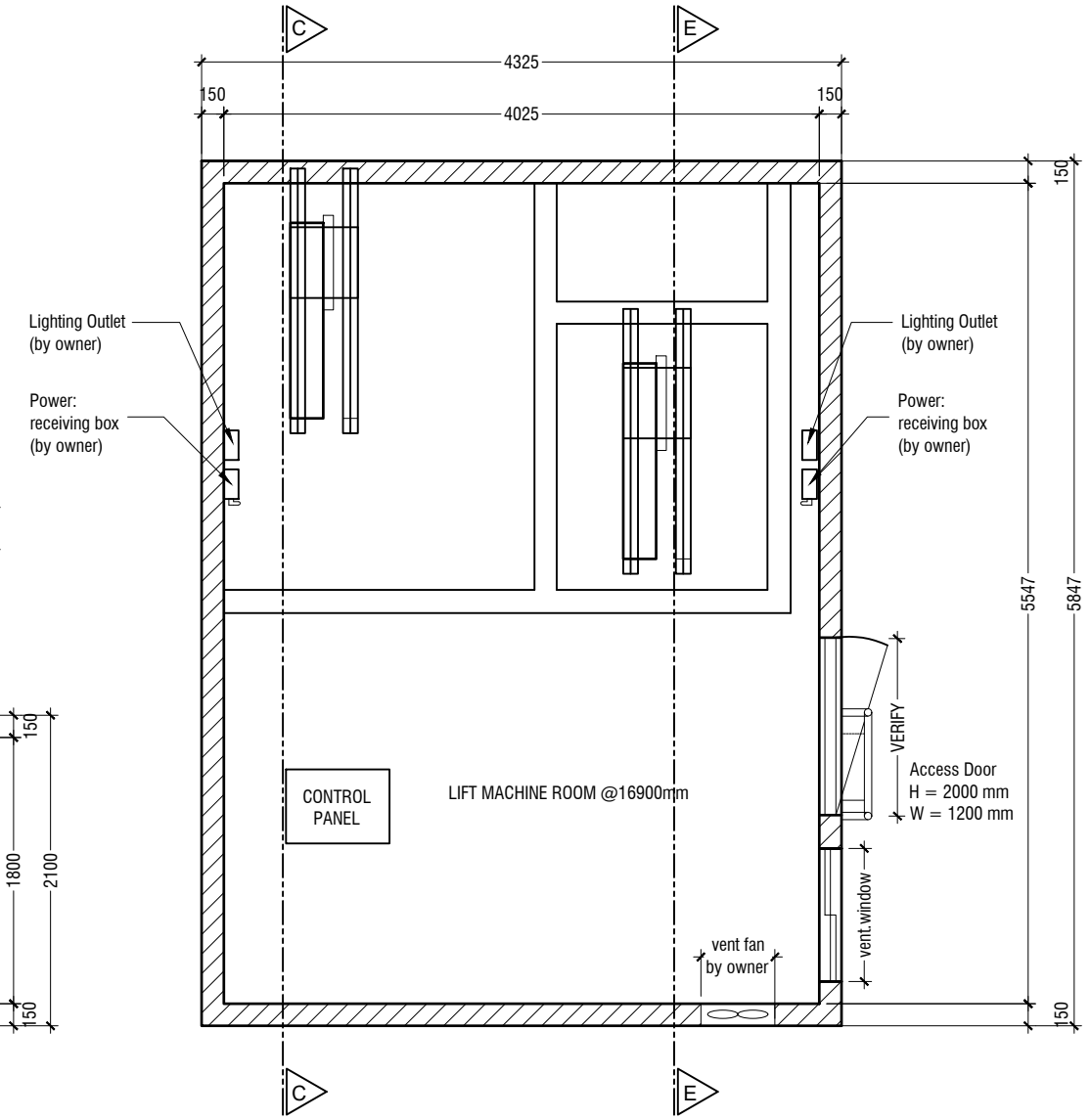
STAIRCASE DETAIL
SCALE 1:50



DETAIL 01

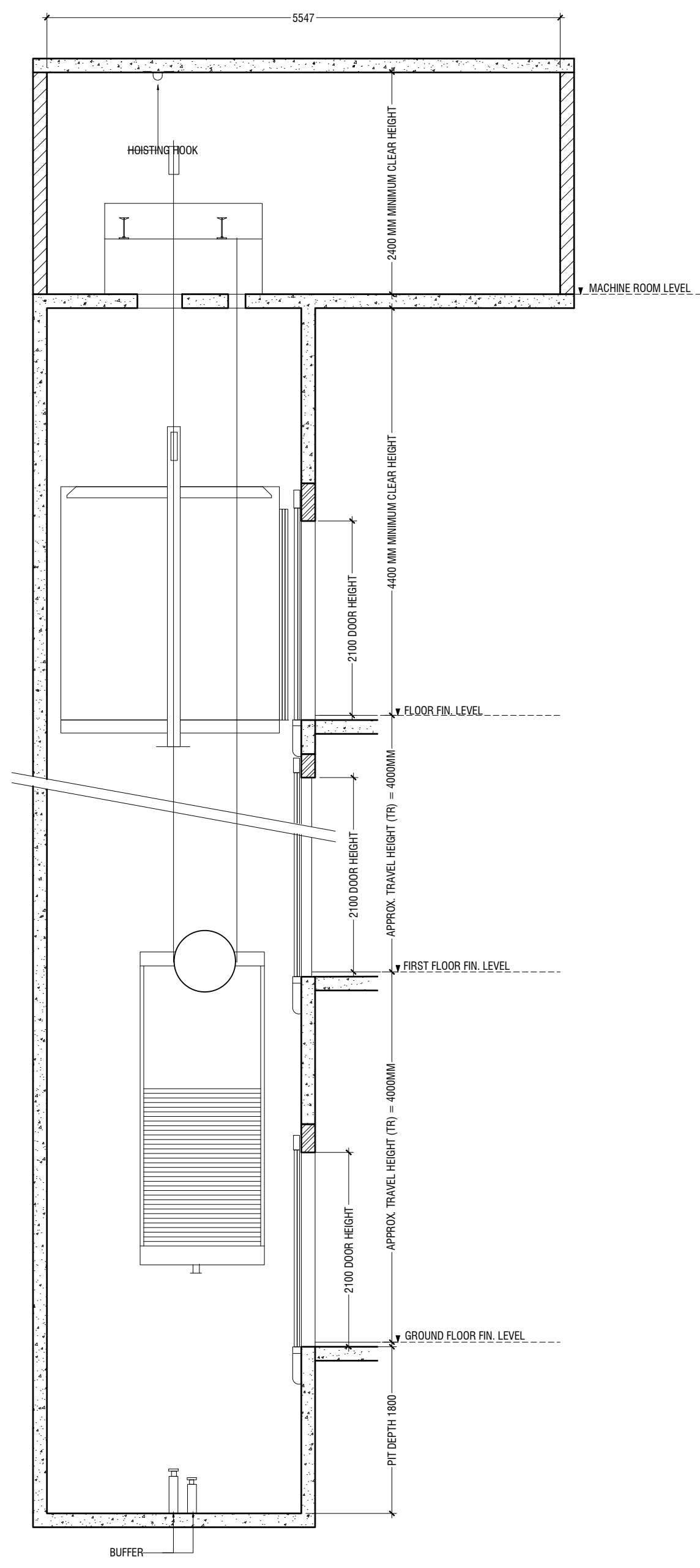


LIFT HOISTWAY PLAN
SCALE 1:30

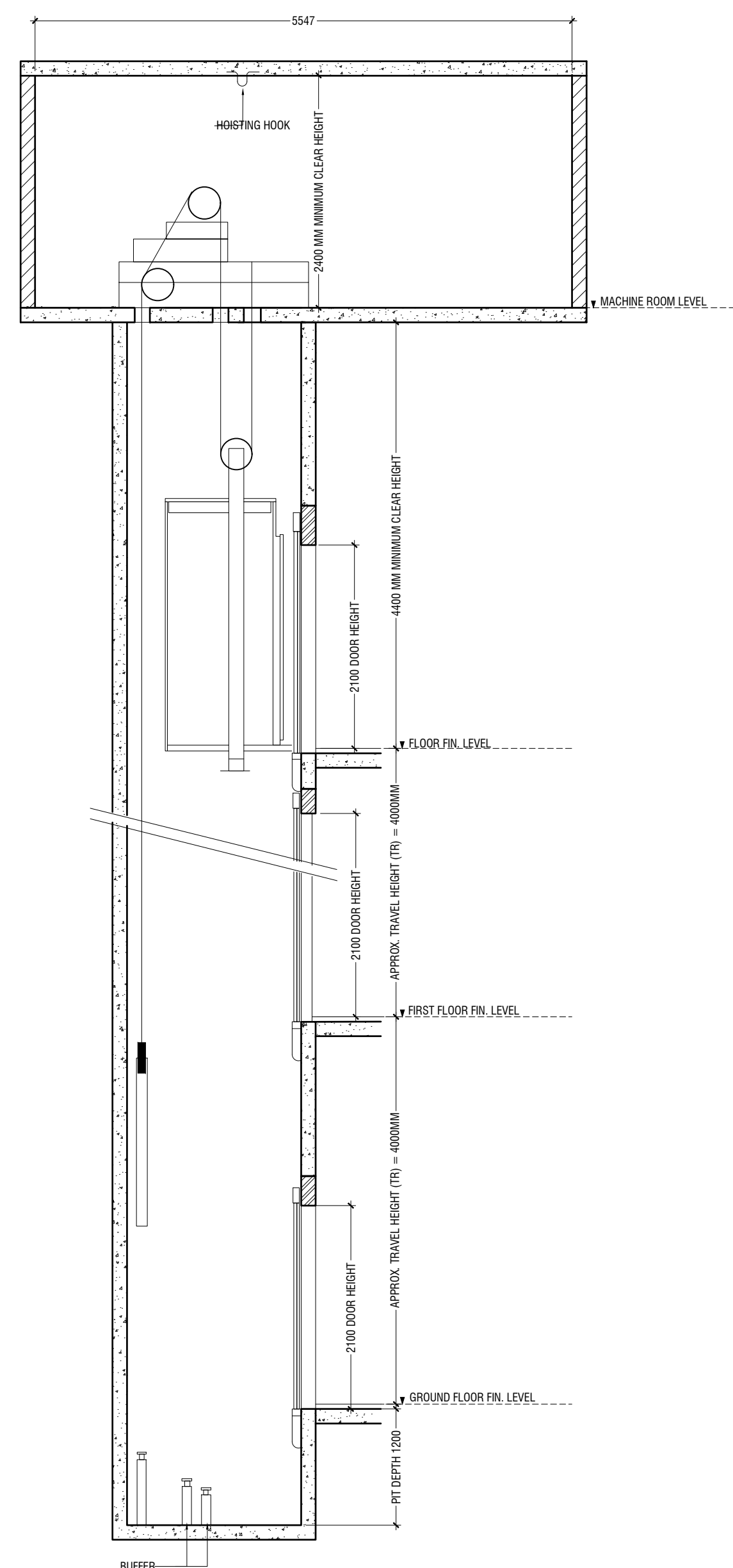


MACHINE ROOM
SCALE 1:50

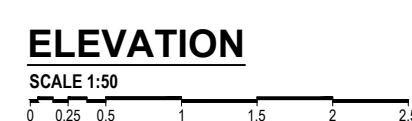
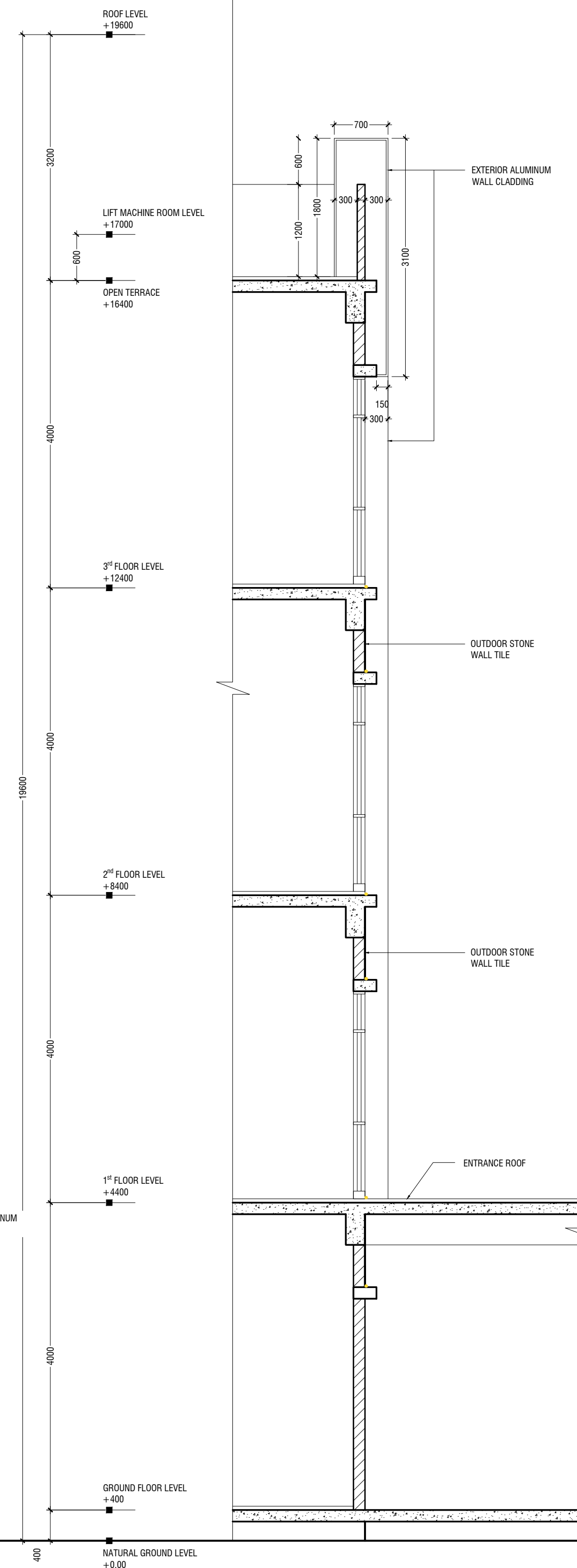
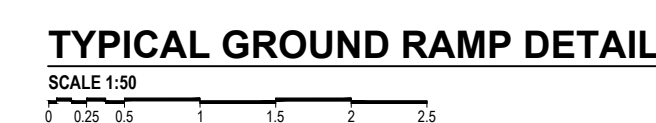
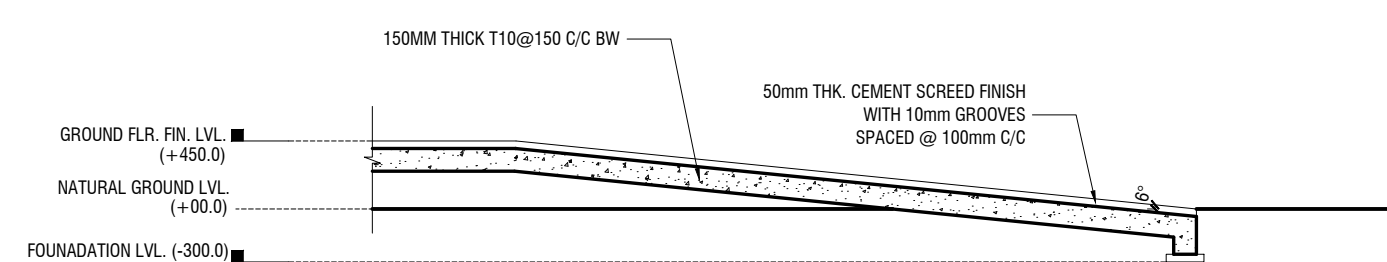
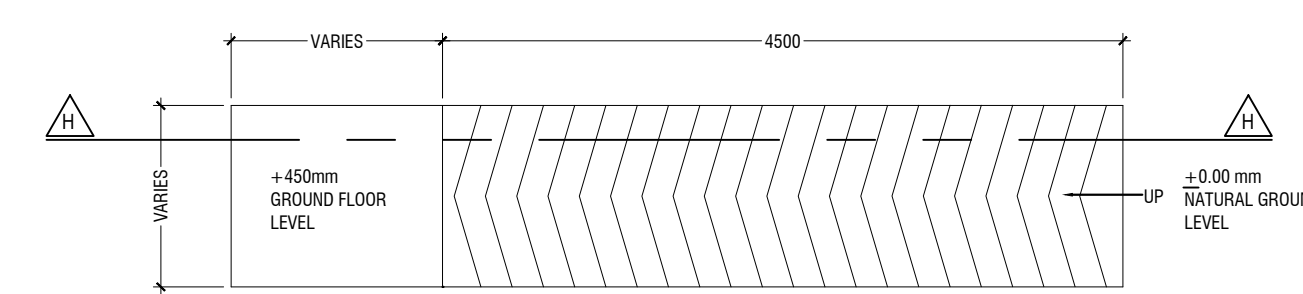
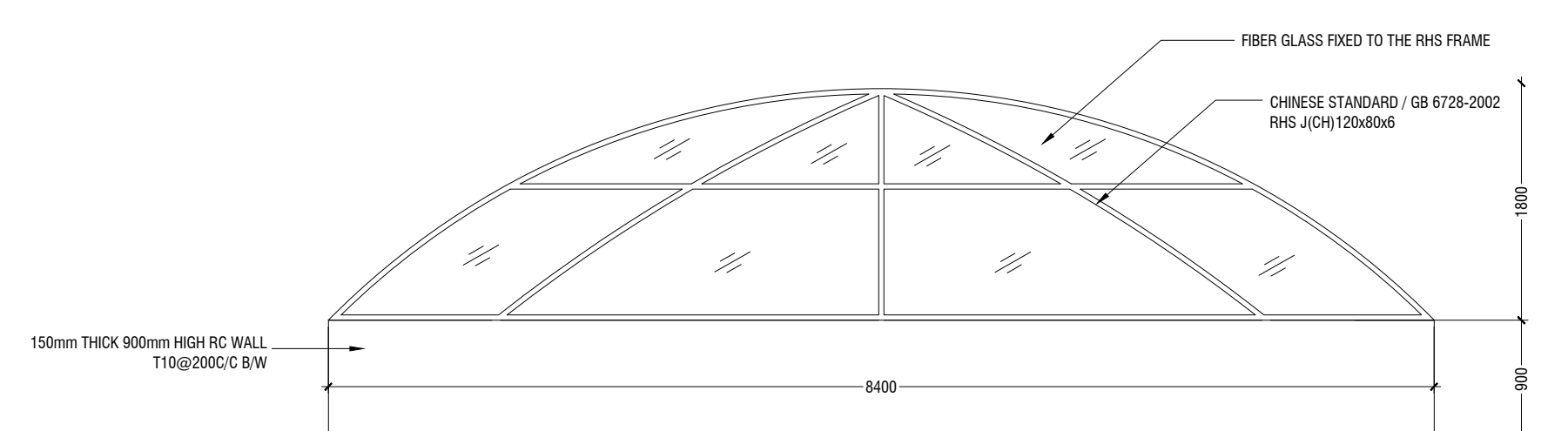
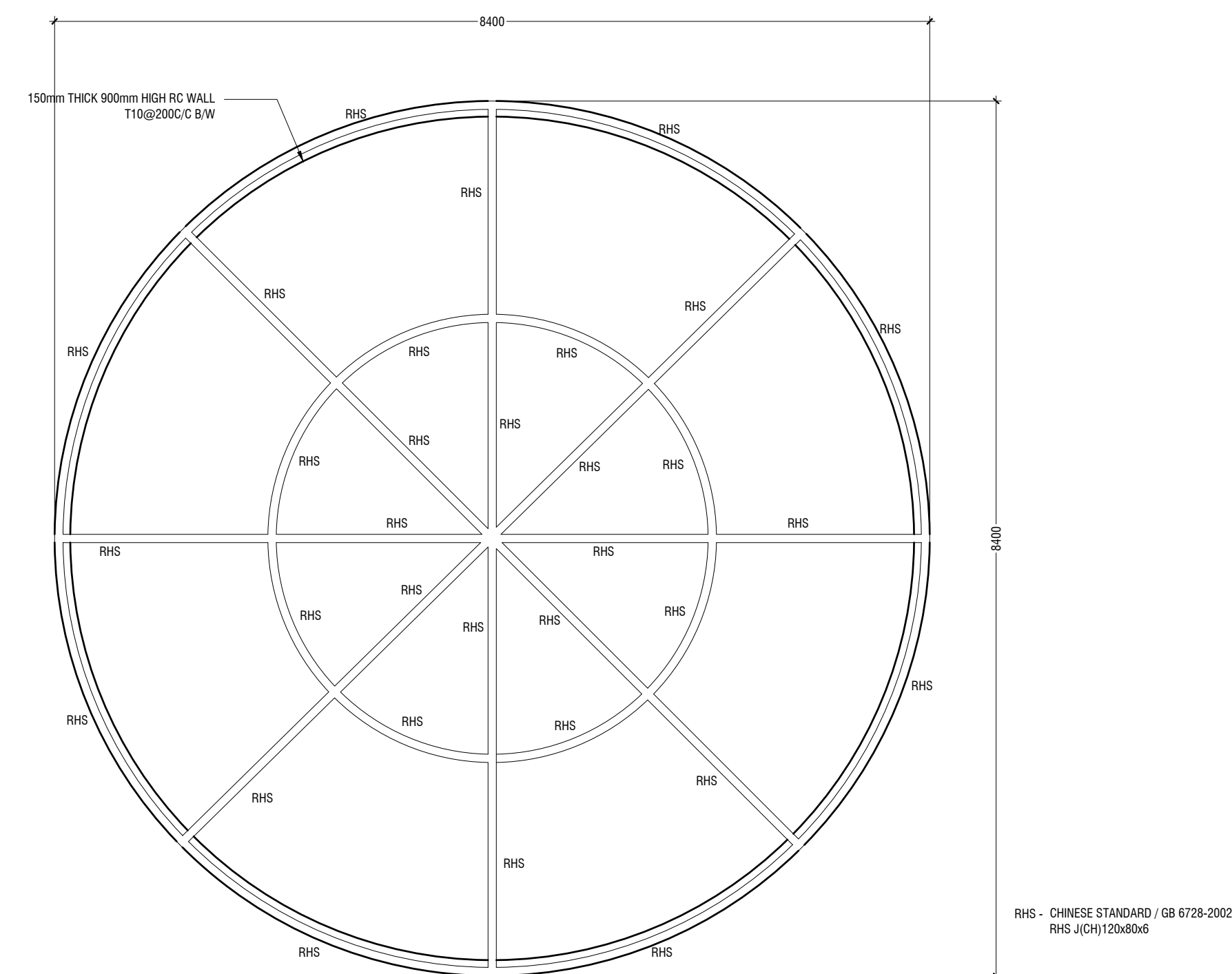
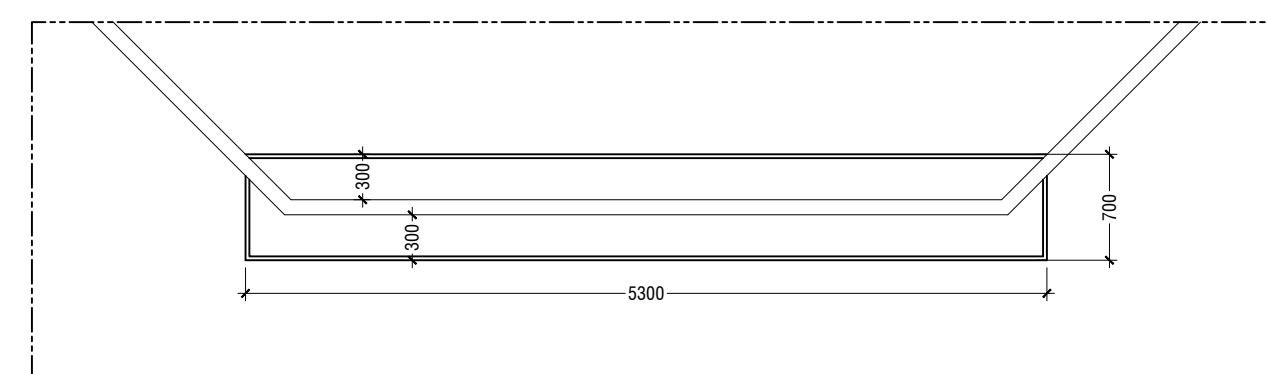
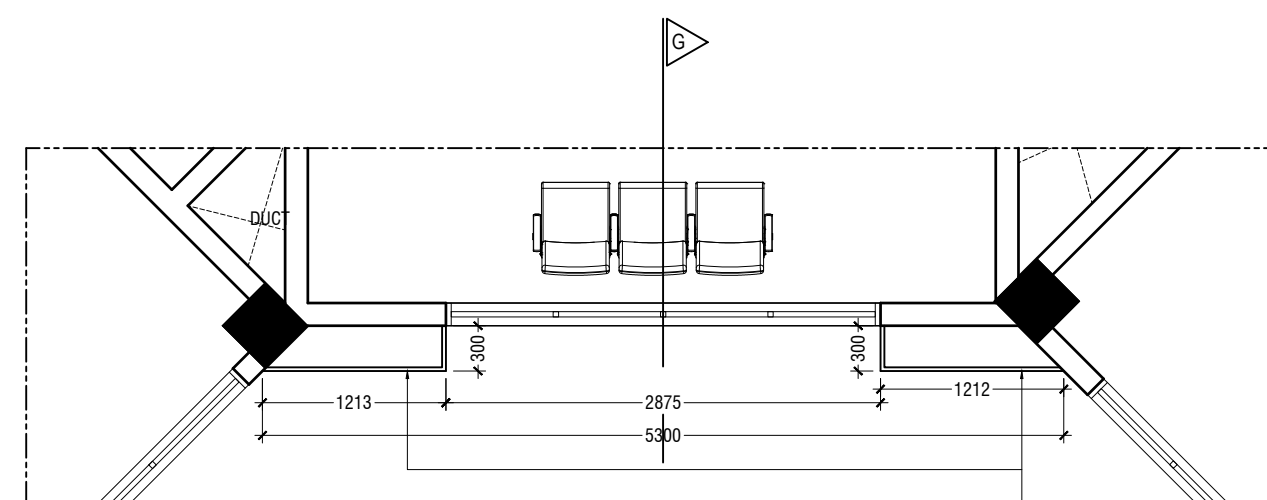
TYPE	LOAD CAPACITY (person quantity)	SPEED (m / min)	CAR DIMENSION (mm) AA x BB	ELEVATOR DOORWAY WIDTH (mm)	HEIGHT (mm)	HOISTWAY DIMENSION AH x BH (mm)	OH (mm)	PIT DEPTH
IFC - PASSENGER LIFT	400kg	1.0 m/s	1000 x 1150	700	2100	1425 X 1800	4350	1200
IFC - HOSPITAL BED LIFT	1275kg	1.0 m/s	1200 x 2300	1100	2100	2100 X 2750	4350	1800

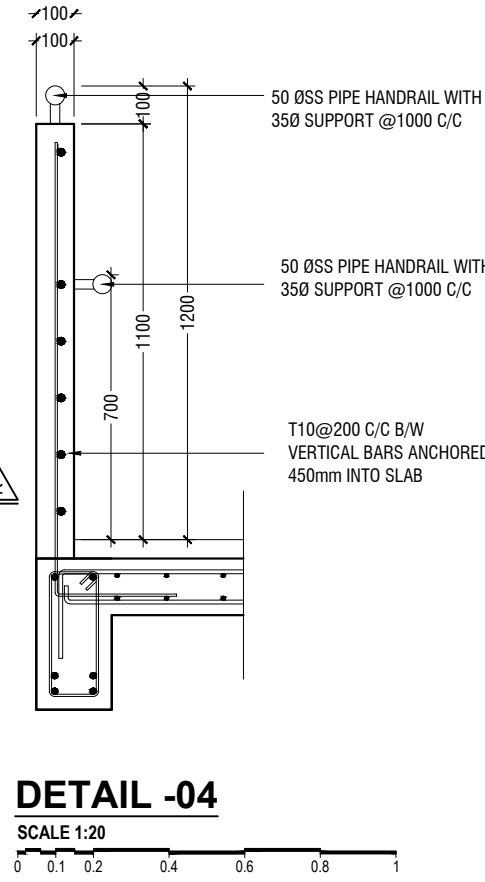


SECTION C-C
SCALE 1:30

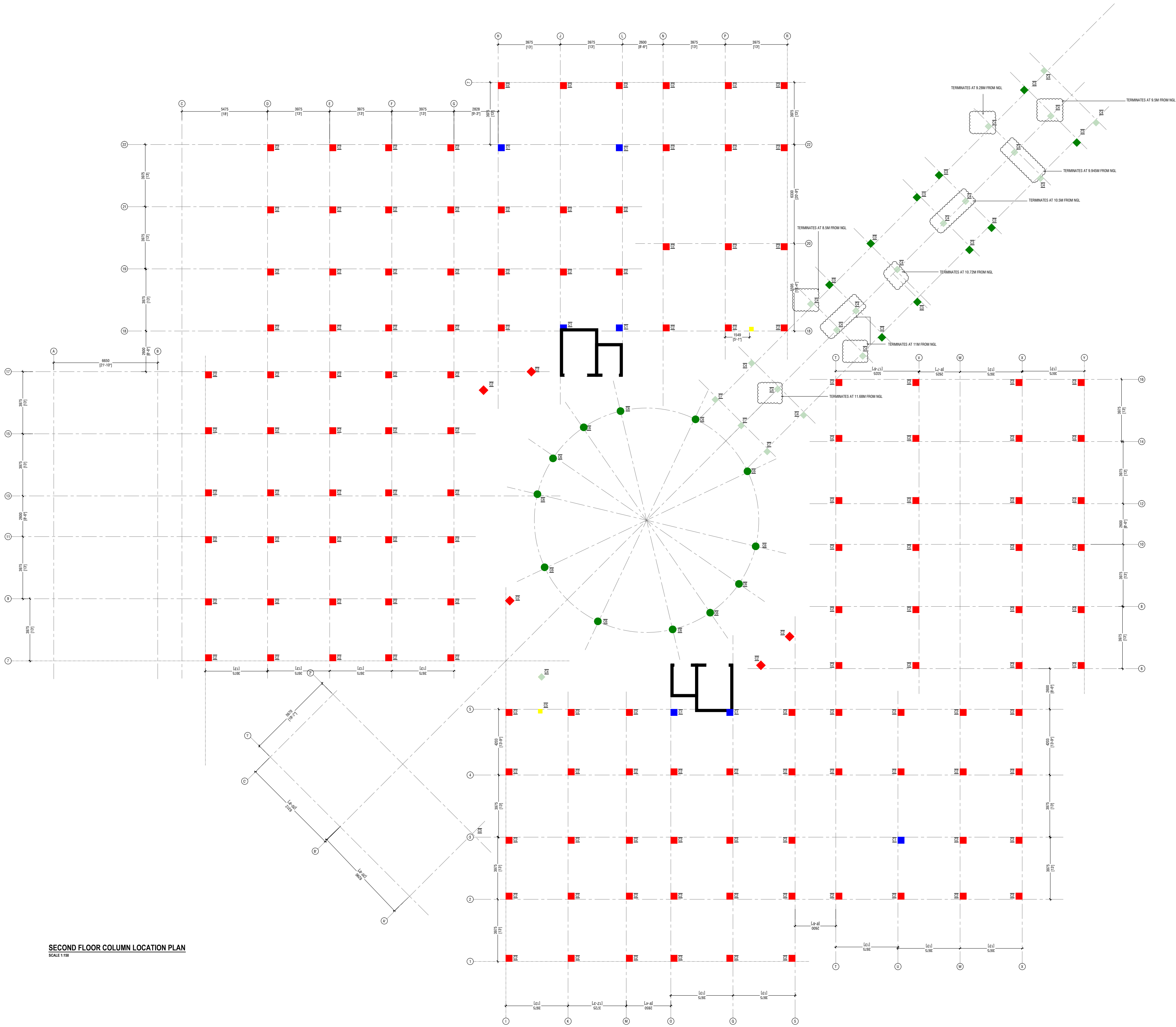


SECTION E-E
SCALE 1:30





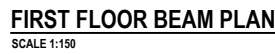


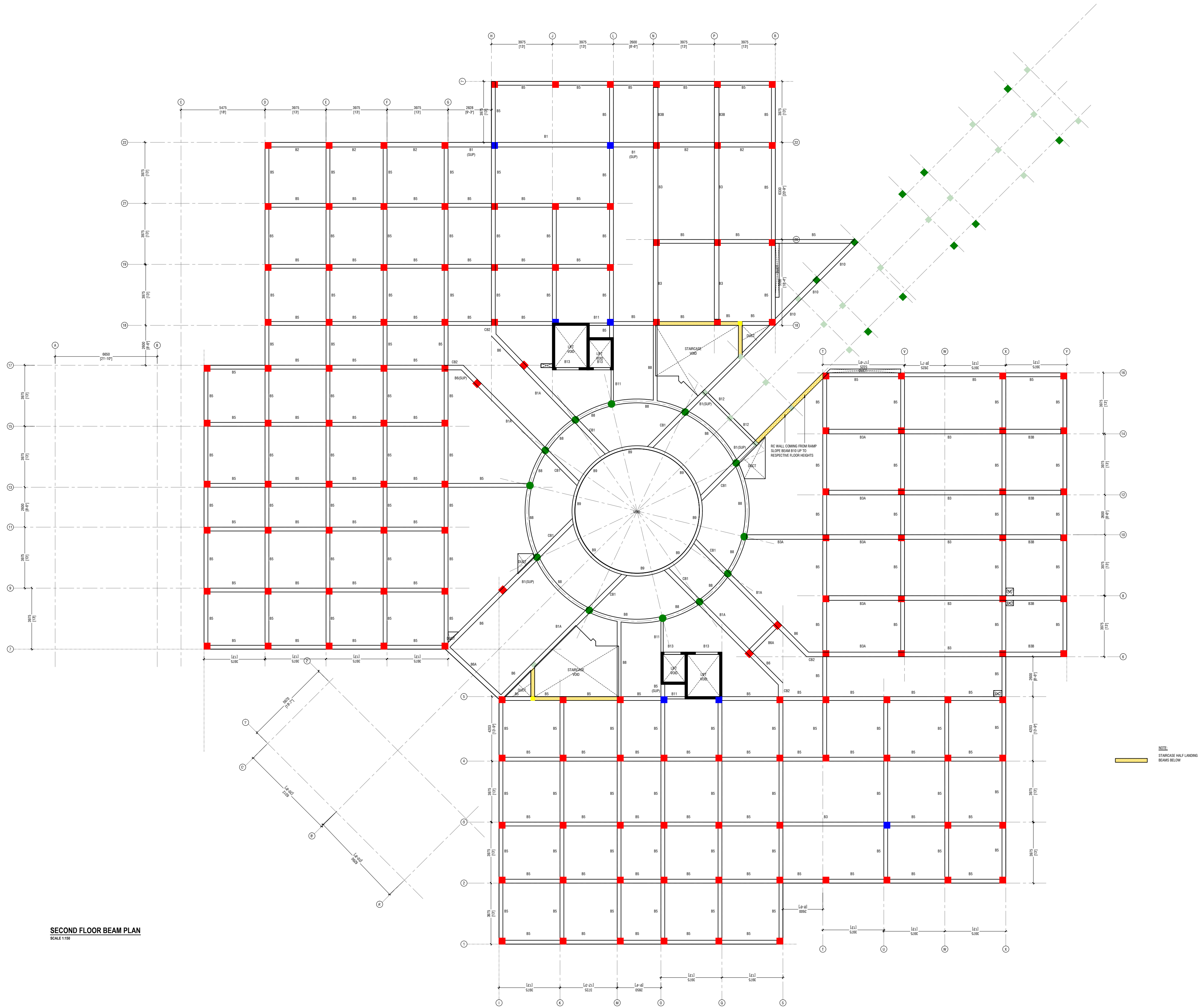


SECOND FLOOR COLUMN LOCATION PLAN
SCALE 1:100







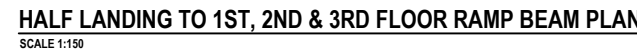


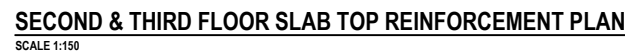
SECOND FLOOR BEAM PLAN
SCALE 1:500





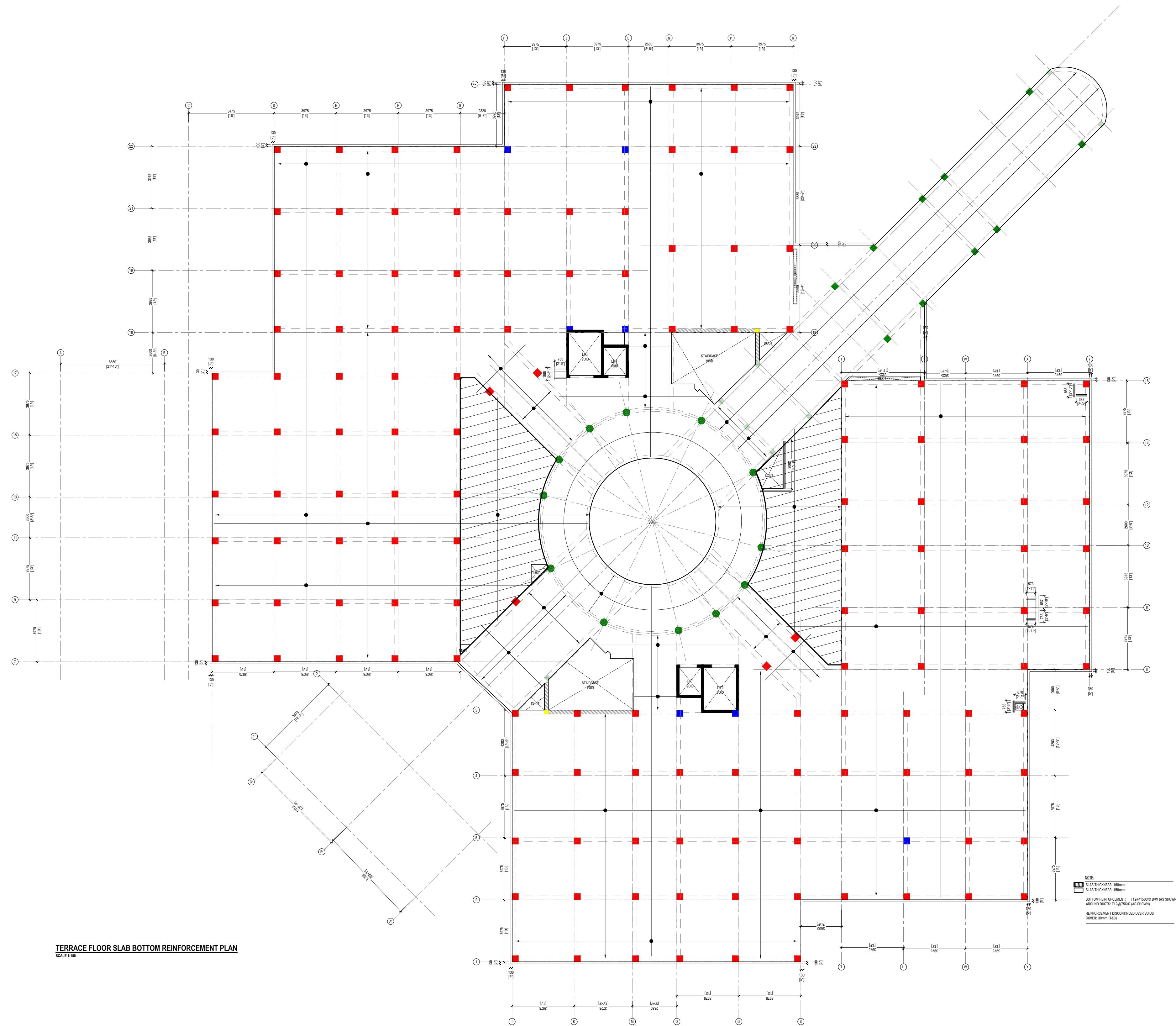




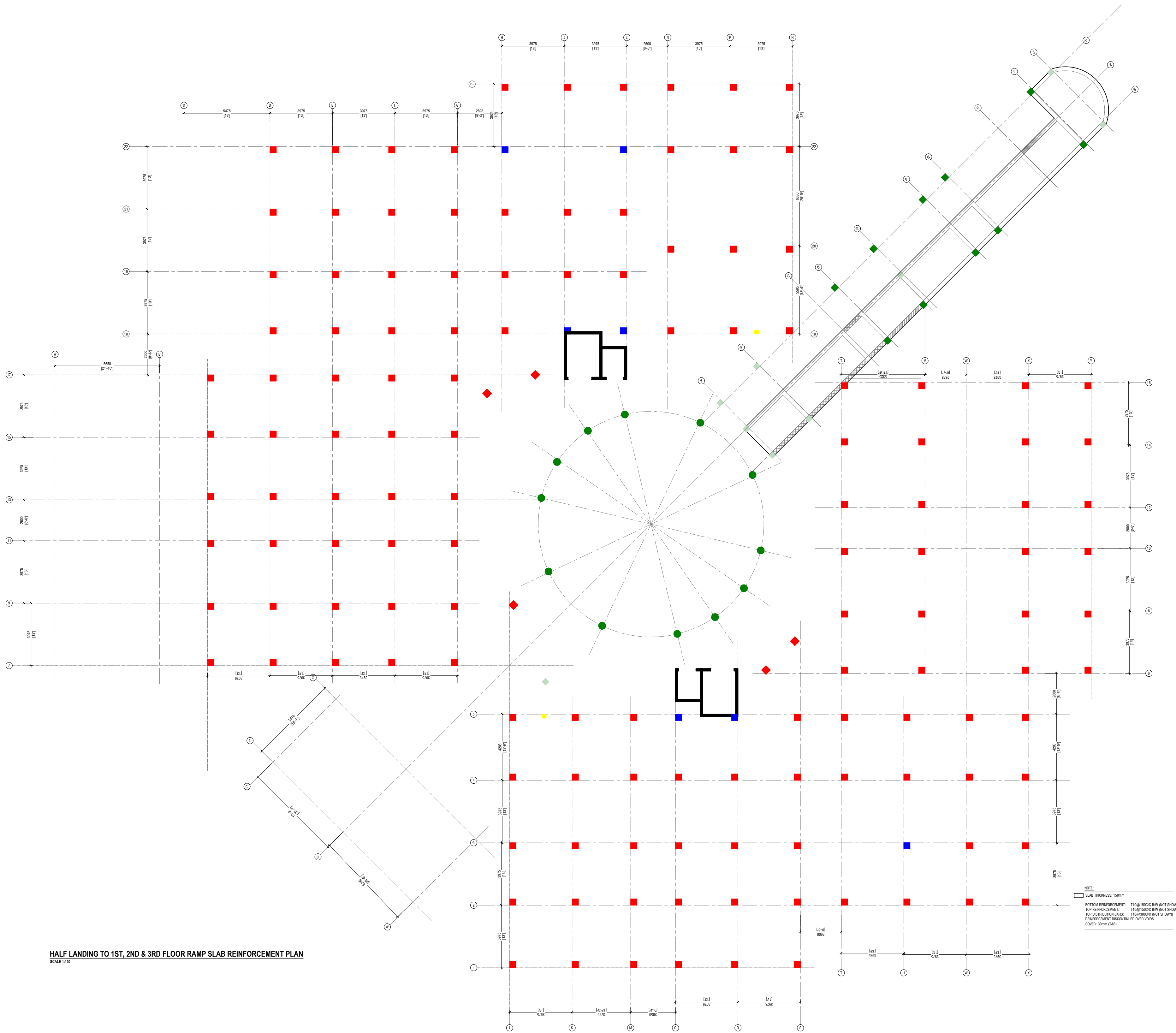


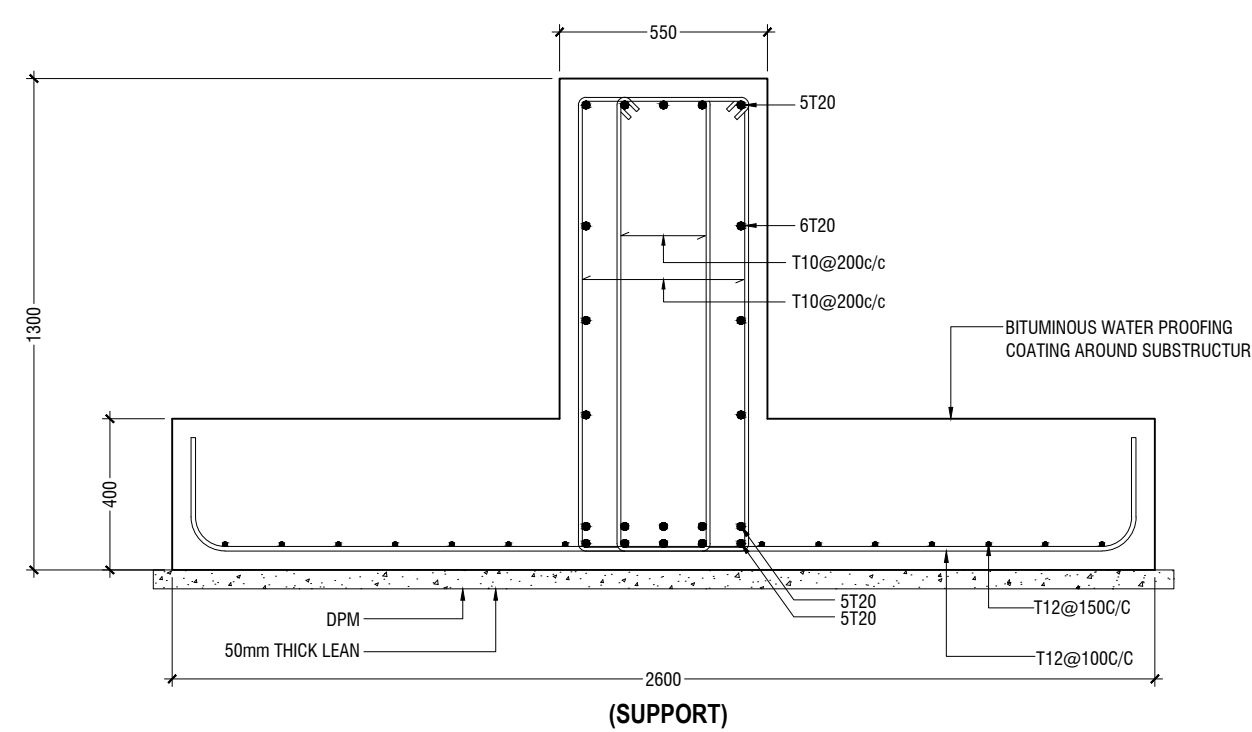
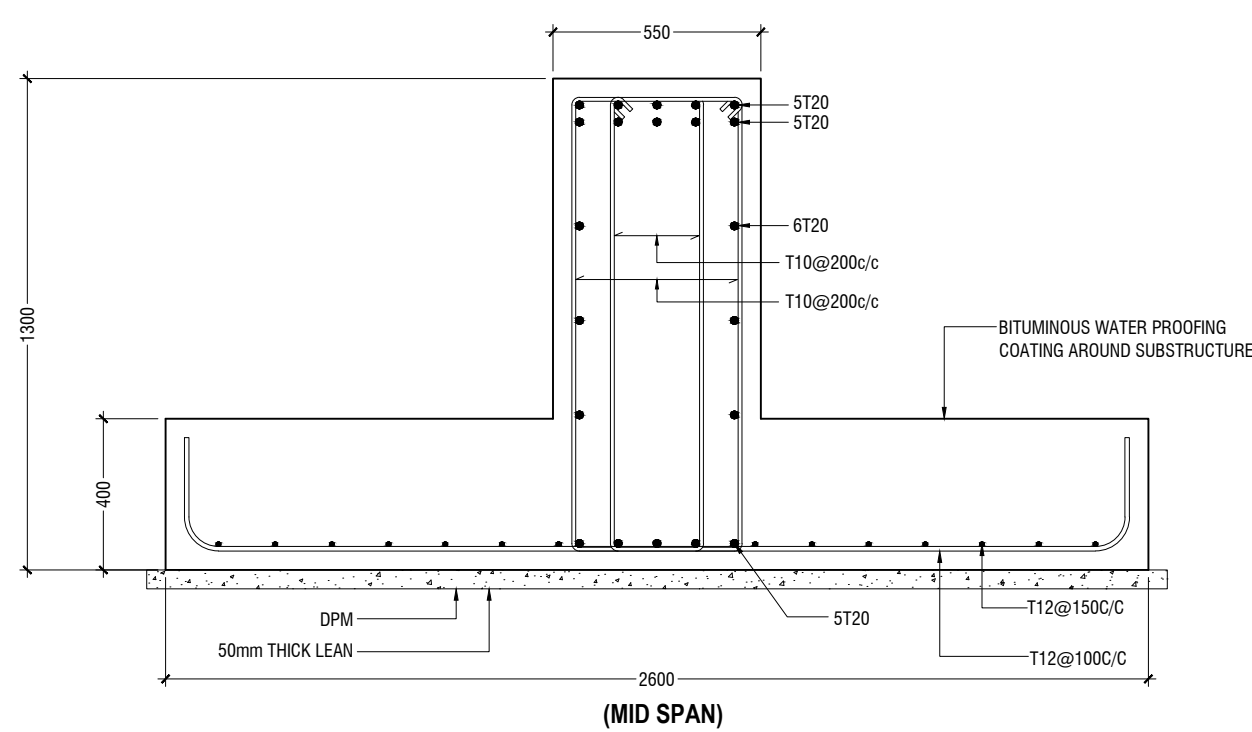
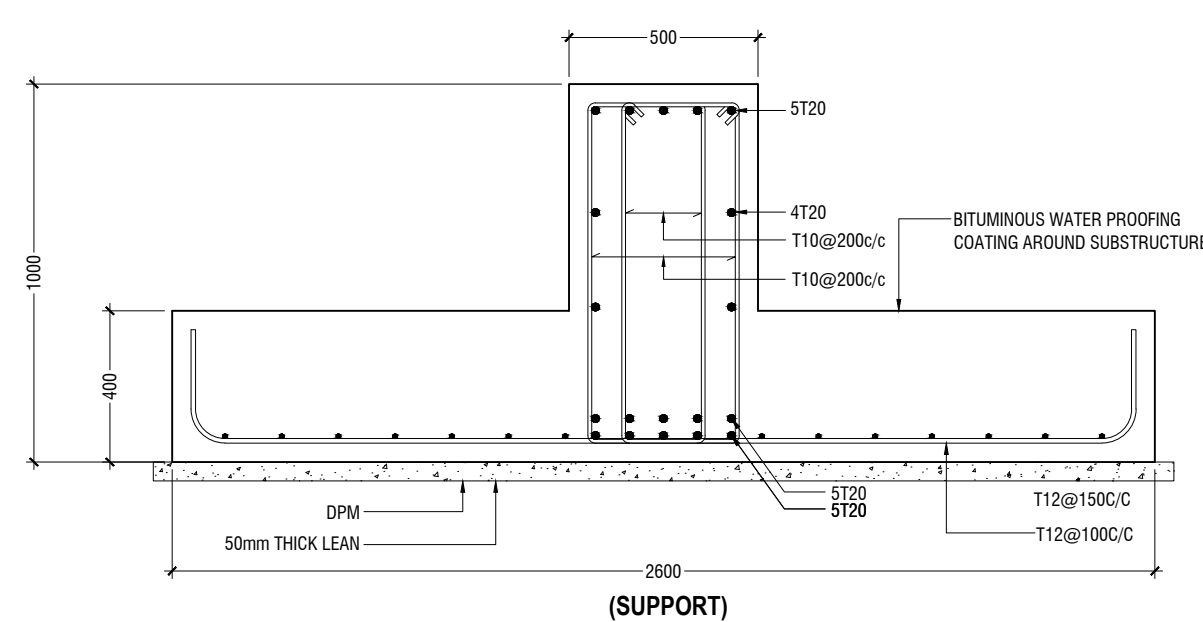
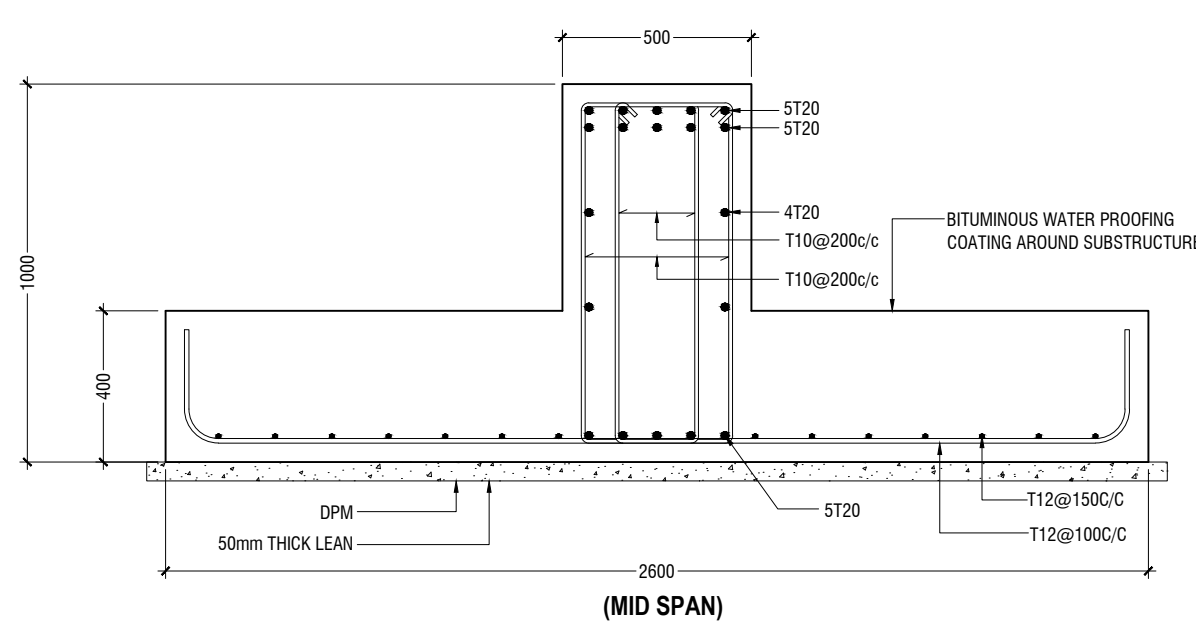
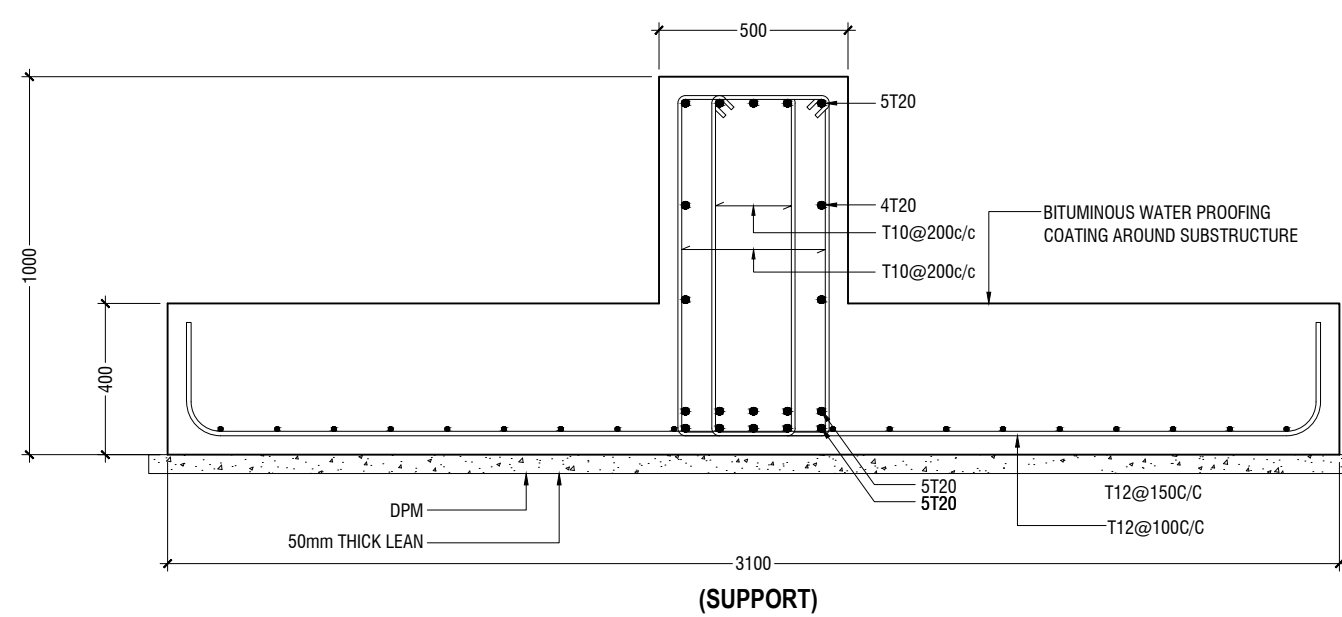
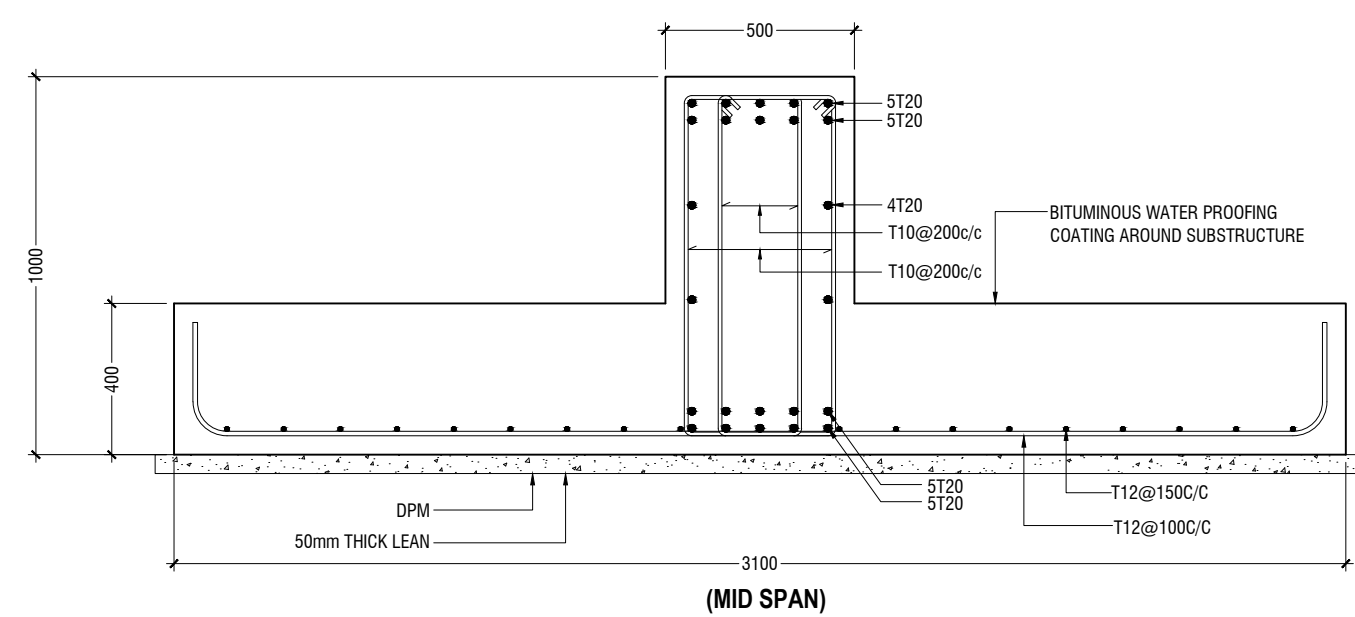
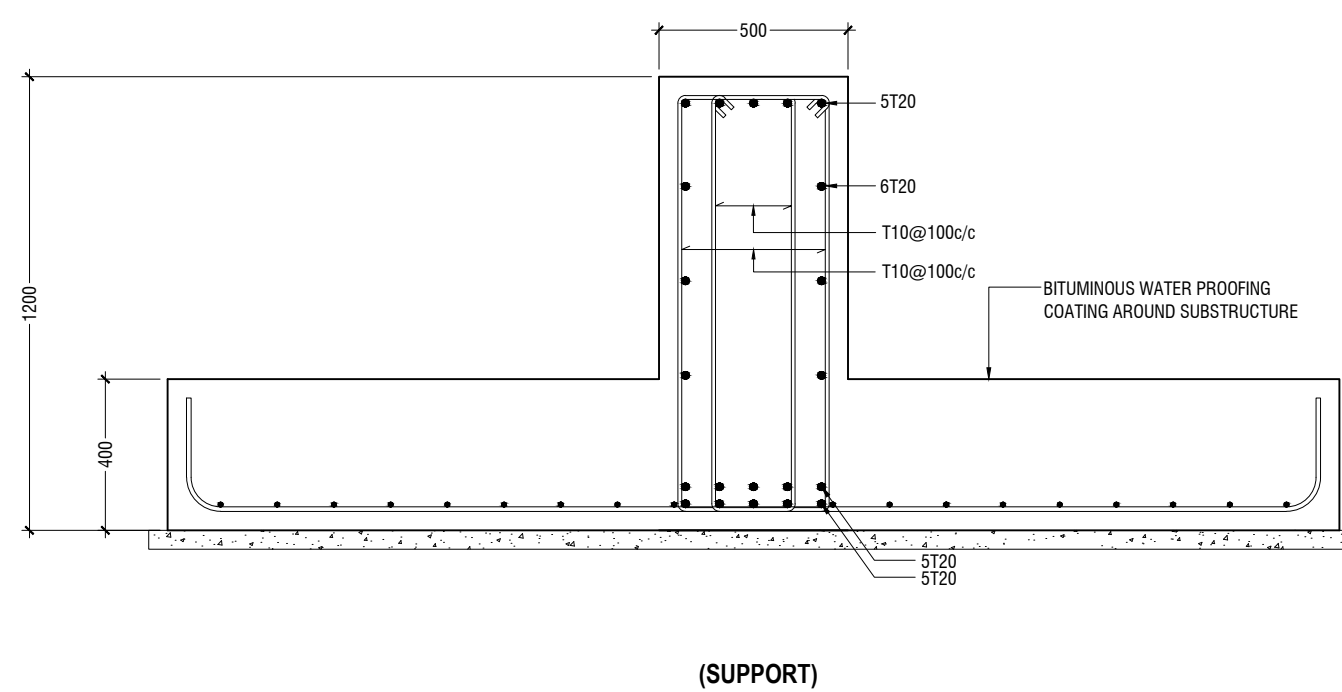
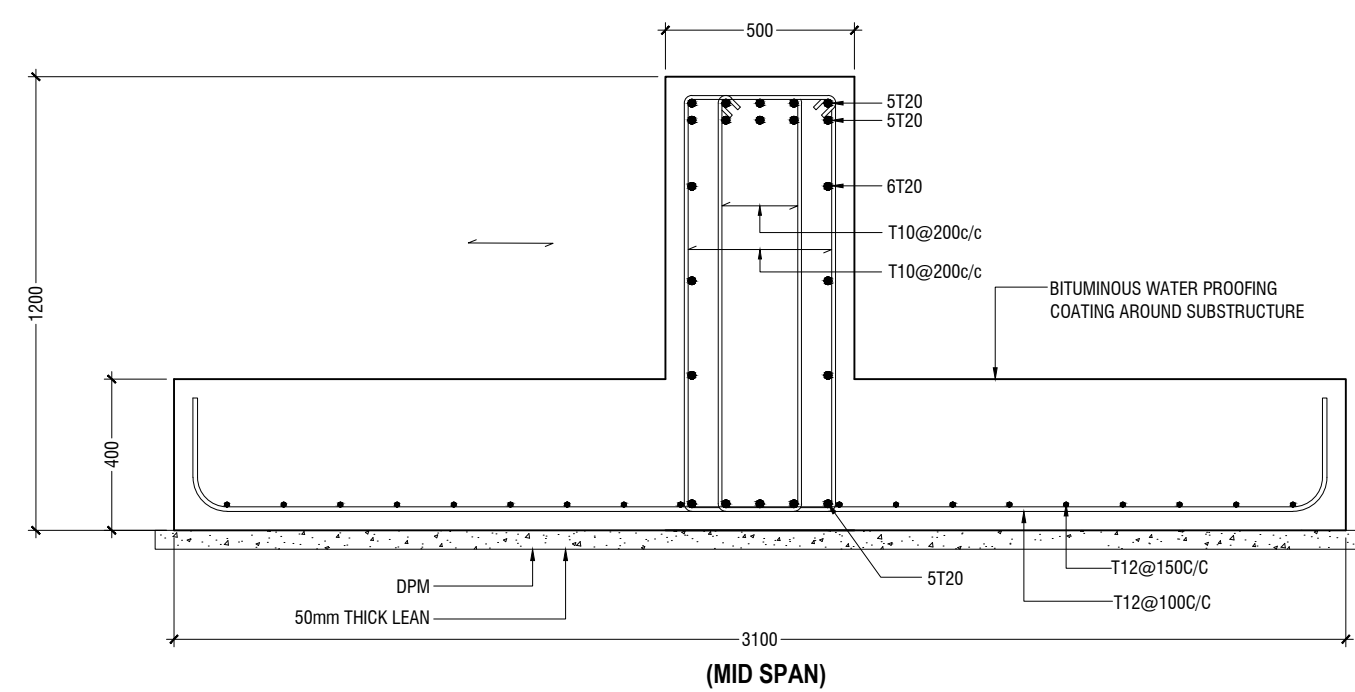












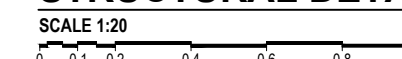
CODE	DIMENSION (L x B x H)	REINFORCEMENT	FOUNDATION DEPT
F1	900 x 900 x 300	T12@100C/B/W (B)	1400mm
F2	1500 x 1500 x 300	T12@150C/B/W (B)	1400mm
F3	1800 x 1800 x 350	T12@150C/B/W (B)	1450mm
F4	2100 x 2100 x 350	T16@140C/B/W (B)	1450mm
F5	2600 x 2600 x 350	T16@100C/B/W (B)	1450mm
F6	2100 x 3300 x 350	T12@150C/B/W (B)	1450mm
F7	3900 x 4700 x 400	T16@150C/B/W (B)	1500mm
F8	4600 x 4800 x 400	T16@150C/B/W (B)	1500mm
F9	6200 x 6300 x 450	T16@150C/B/W (B) T12@150C/B/W (T)	1550mm
F10	6000 x 6300 x 450	T16@150C/B/W (B) T12@150C/B/W (T)	1550mm
F11	L x B x 400 (REFER PLAN DETAIL)	T16@150C/B/W (B)	1450mm

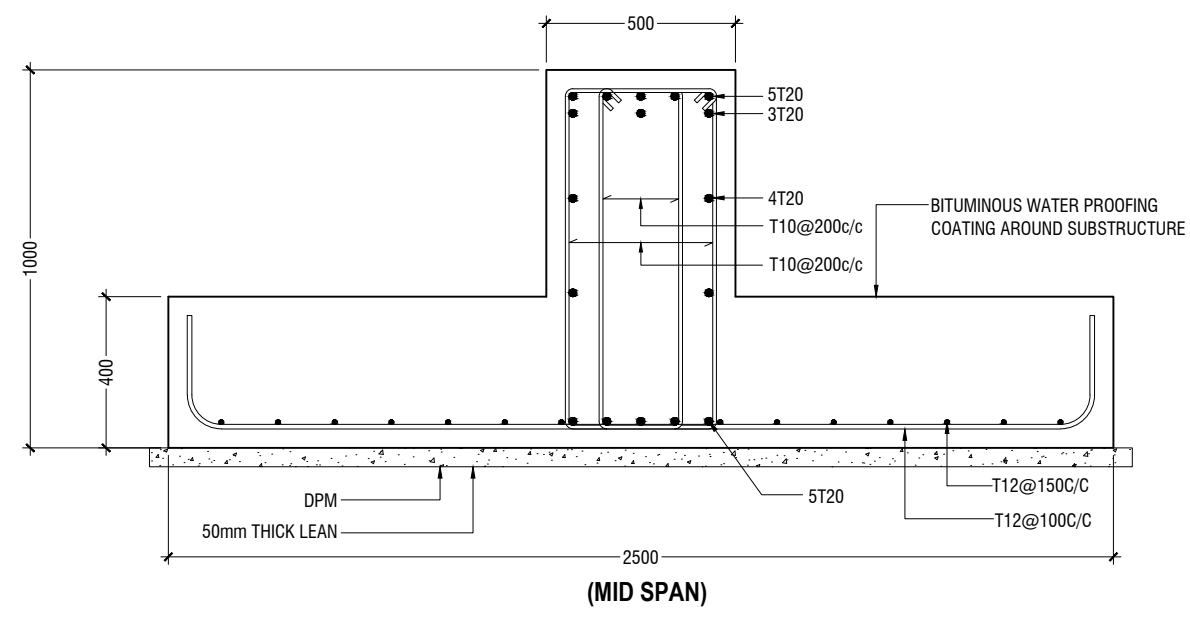
CODE	FOUNDATION DEPT
ST1-FB3	1500mm
ST1-FB4	1500mm
ST2-FB4	1500mm
ST2-FB2	1500mm
ST3-FB5	1500mm
ST4-FB1	1500mm
ST4-FB5	1500mm
ST5-FB6	1500mm
ST6-FB6	1500mm

FOUNDATION DETAILS 01

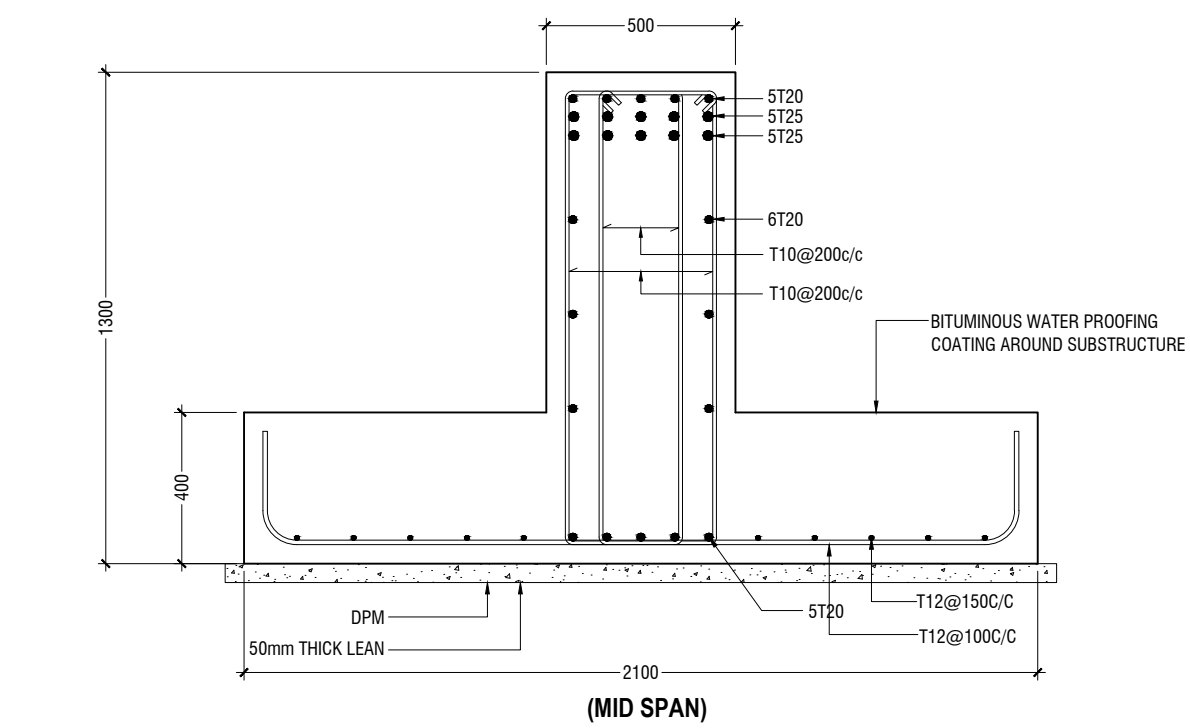
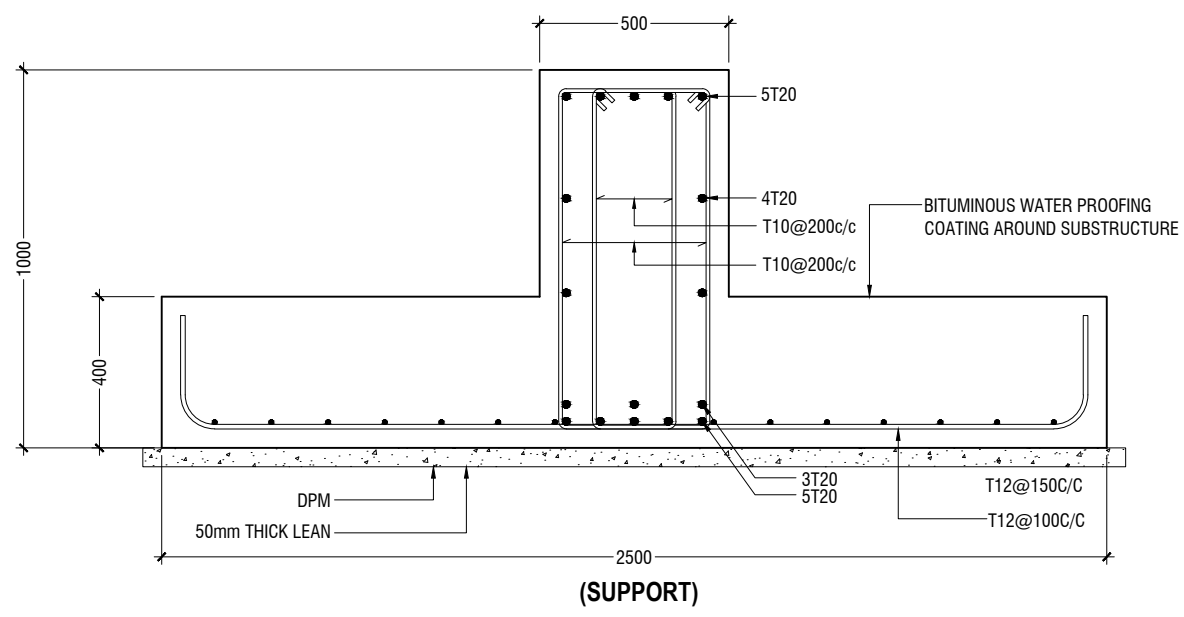


STRUCTURAL DETAILS 01

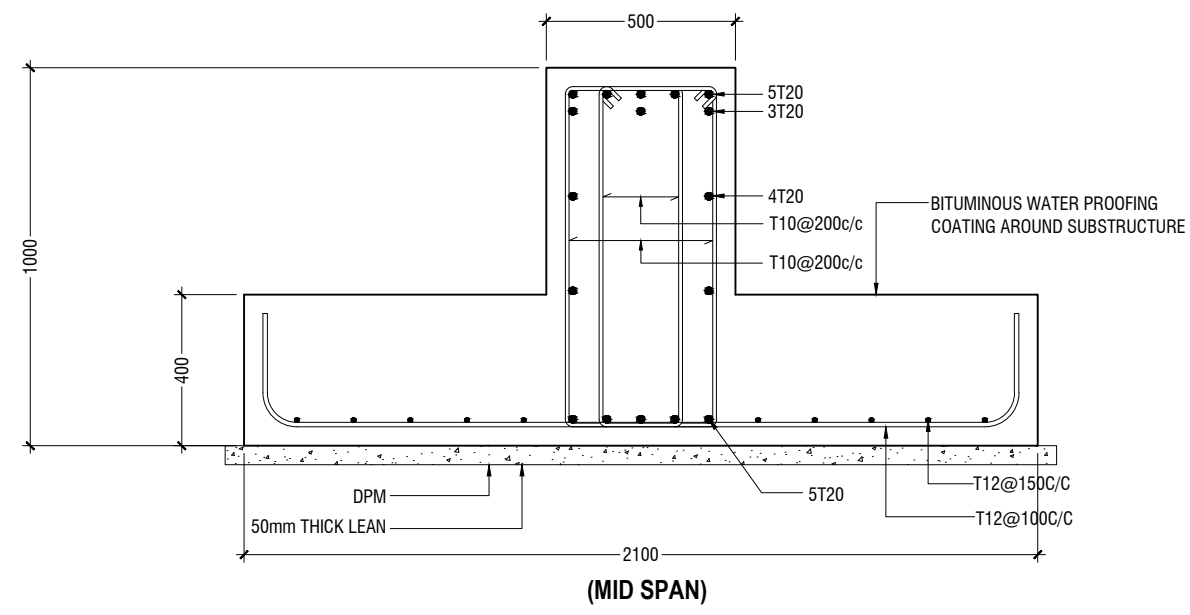
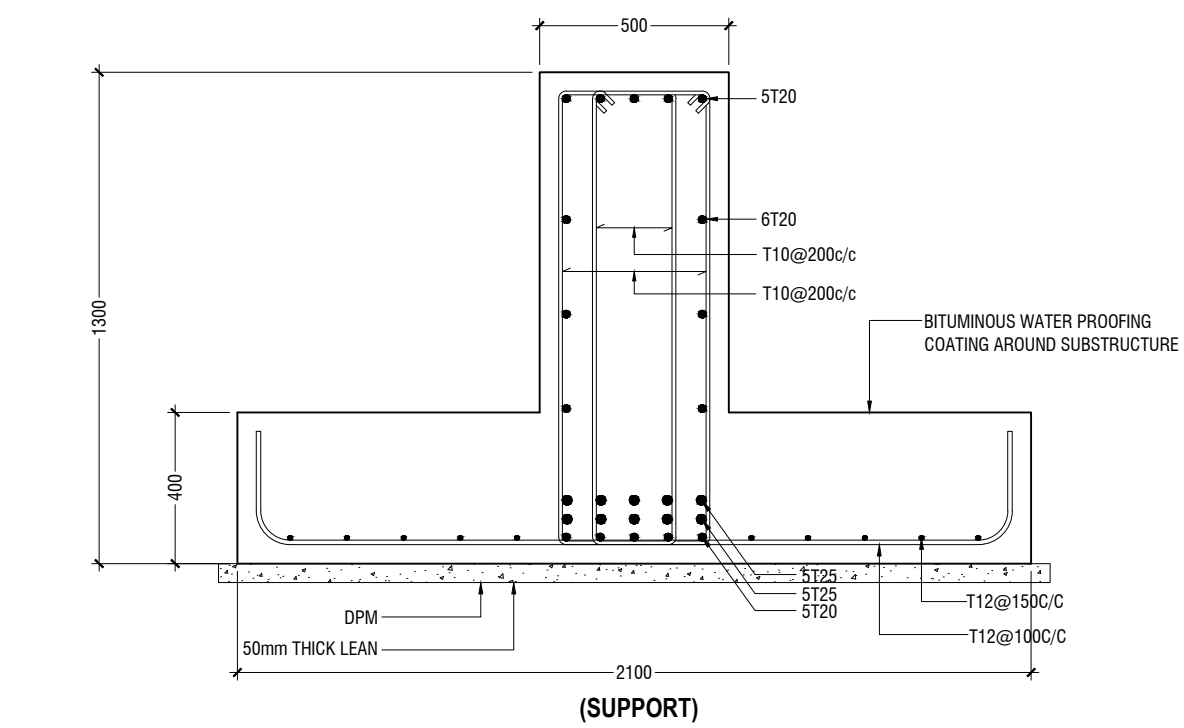




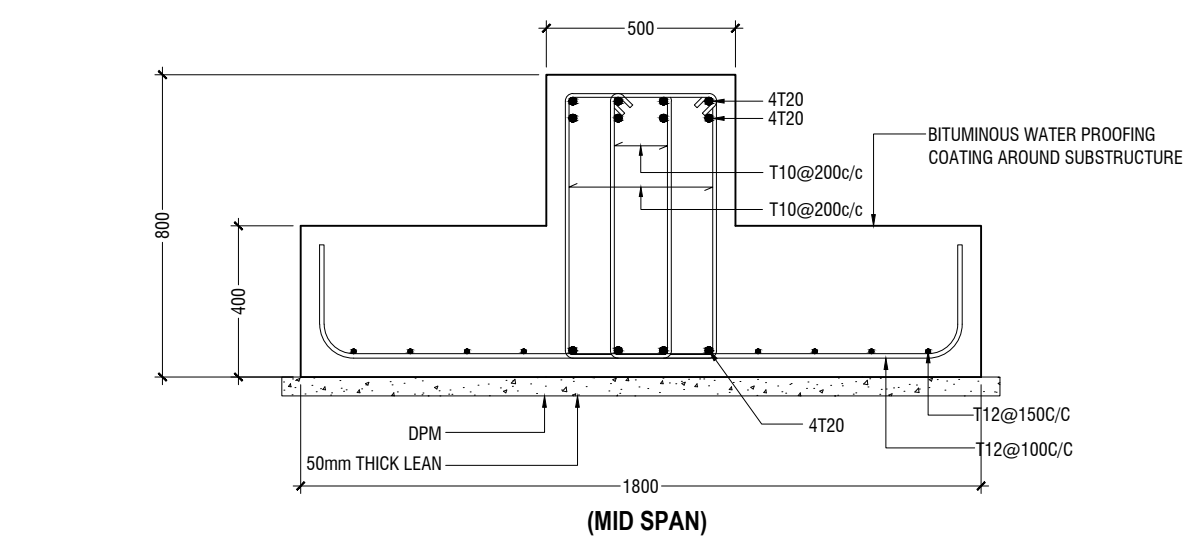
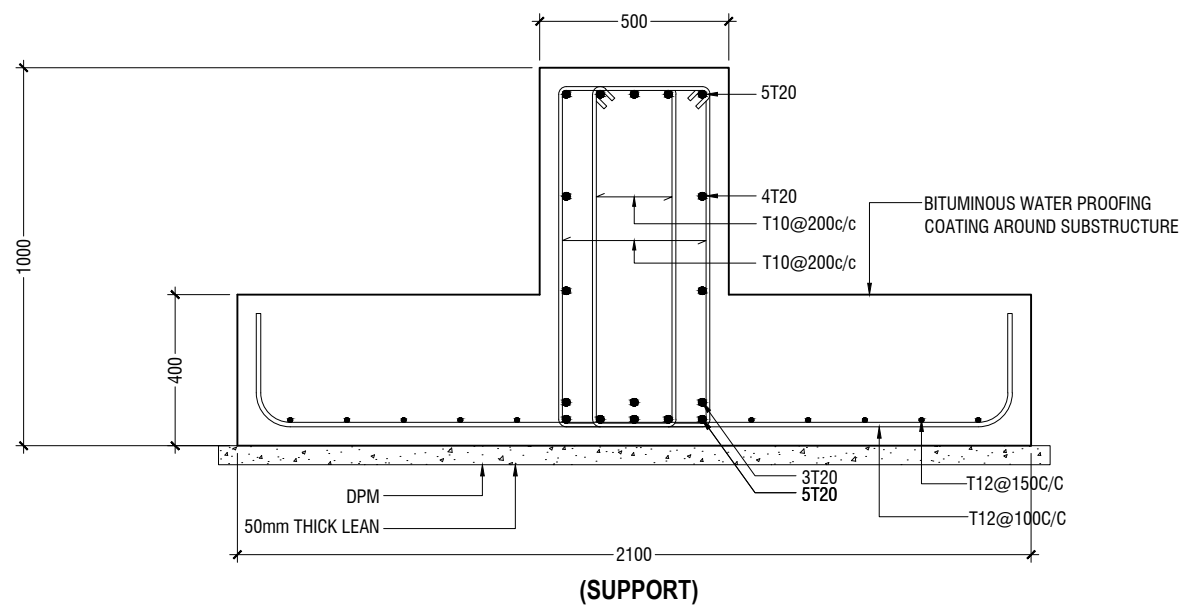
ST3-FB5



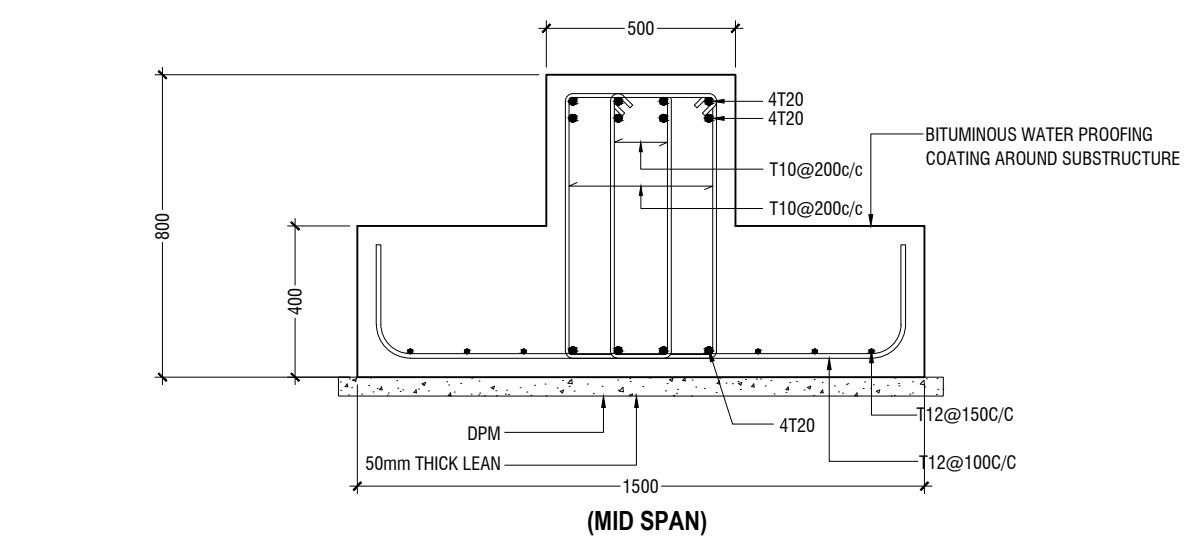
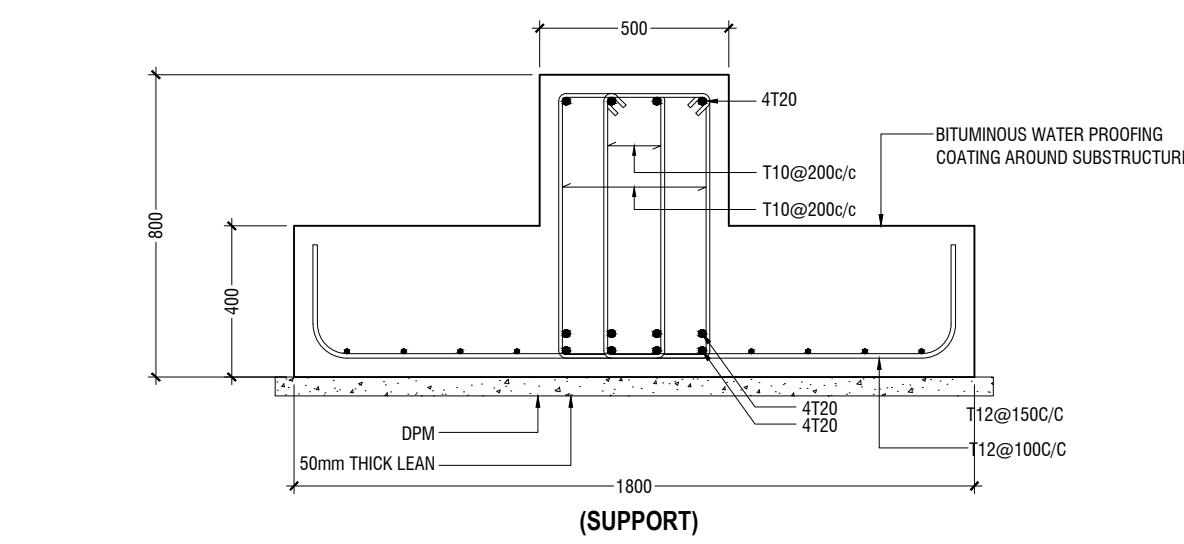
ST4-FB1



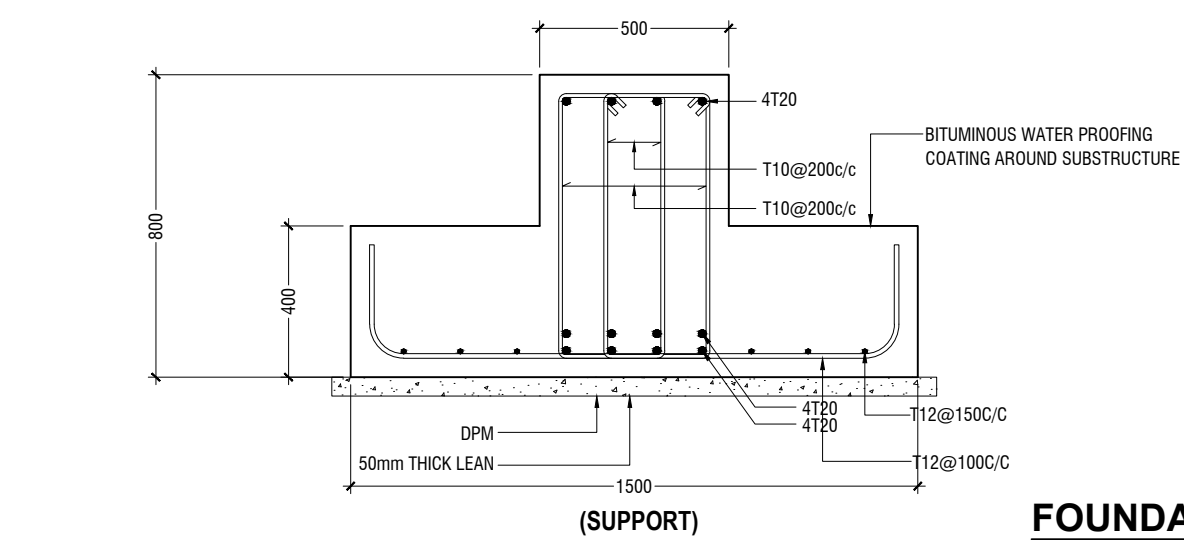
ST4-FB5



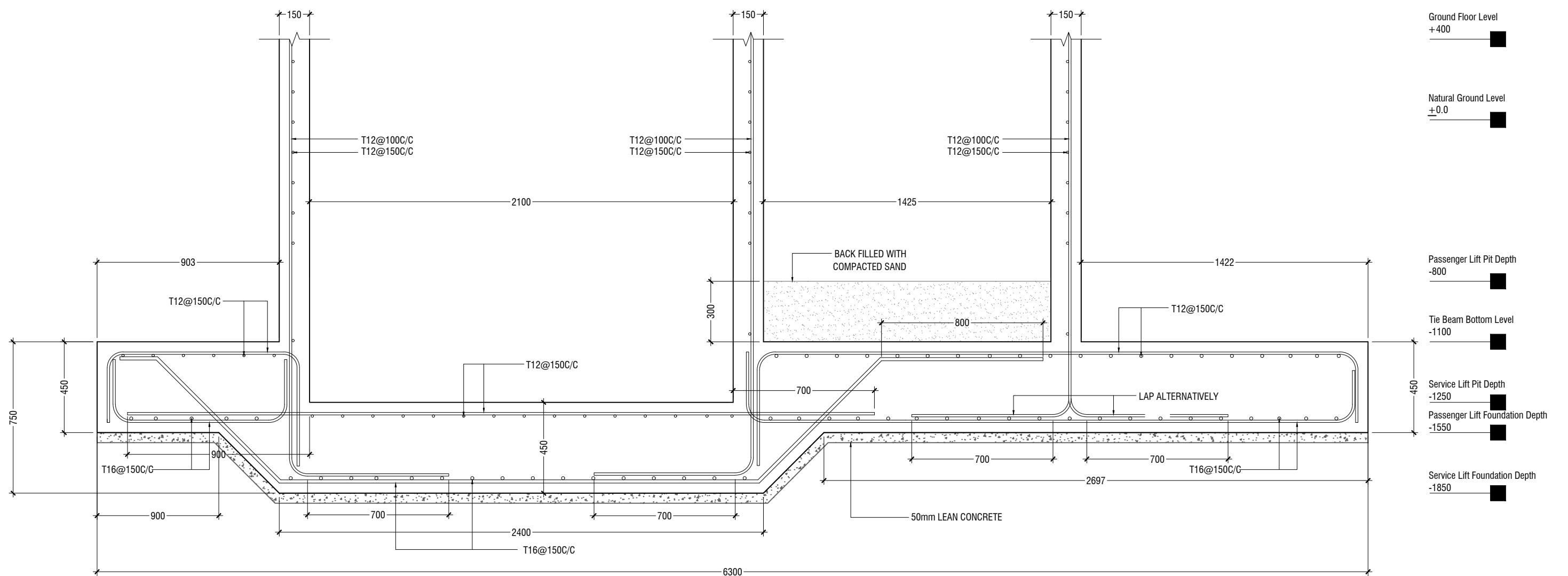
ST5-FB6



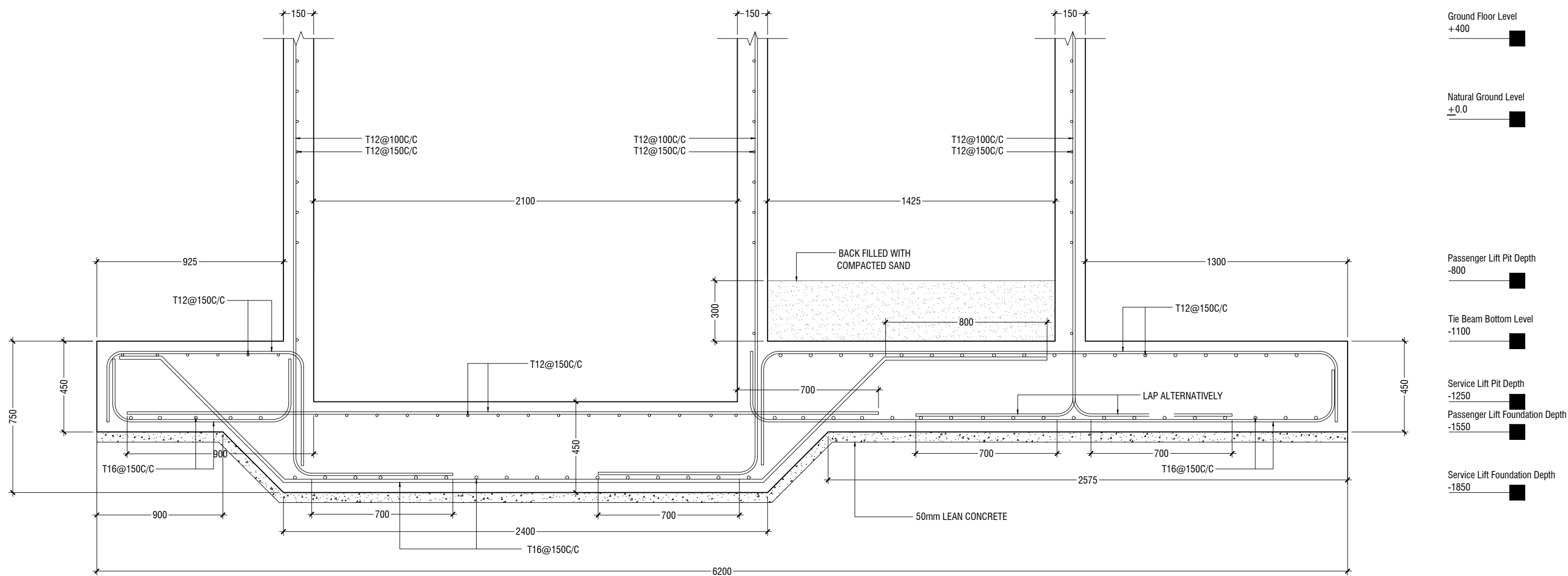
ST6-FB6



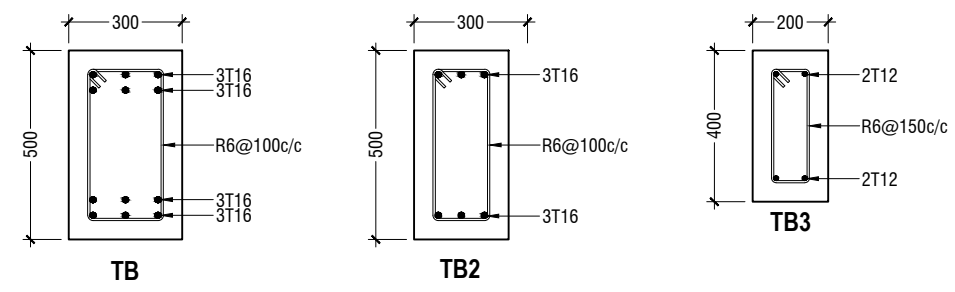
FOUNDATION DETAILS 02
SCALE 1:20



LIFT PIT SECTION X1-X1

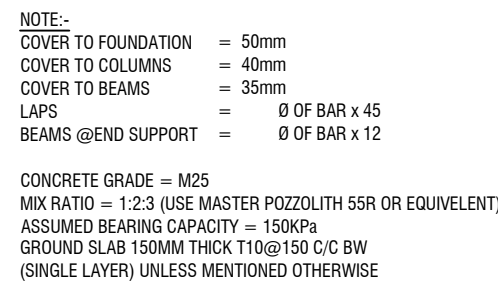


LIFT PIT SECTION X2-X2



TIE BEAM DETAILS
SCALE 1:20

STRUCTURAL DETAILS 02
SCALE 1:20



SCALE 1:20

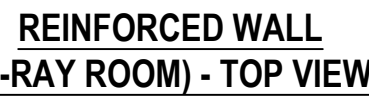


SCALE 1:20



SCALE 1:20

0 0.1 0.2 0.4 0.6 0.8 1



SCALE 1:20