

BUILDING SERVICES DRAWINGS OF  
PROPOSED 02 STOREY BUILDING

# **MULTI-PURPOSE HALL, HDH. NOLHIVARAM**

For Ministry Of Education


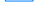
By Epoch Associates Pvt. Ltd



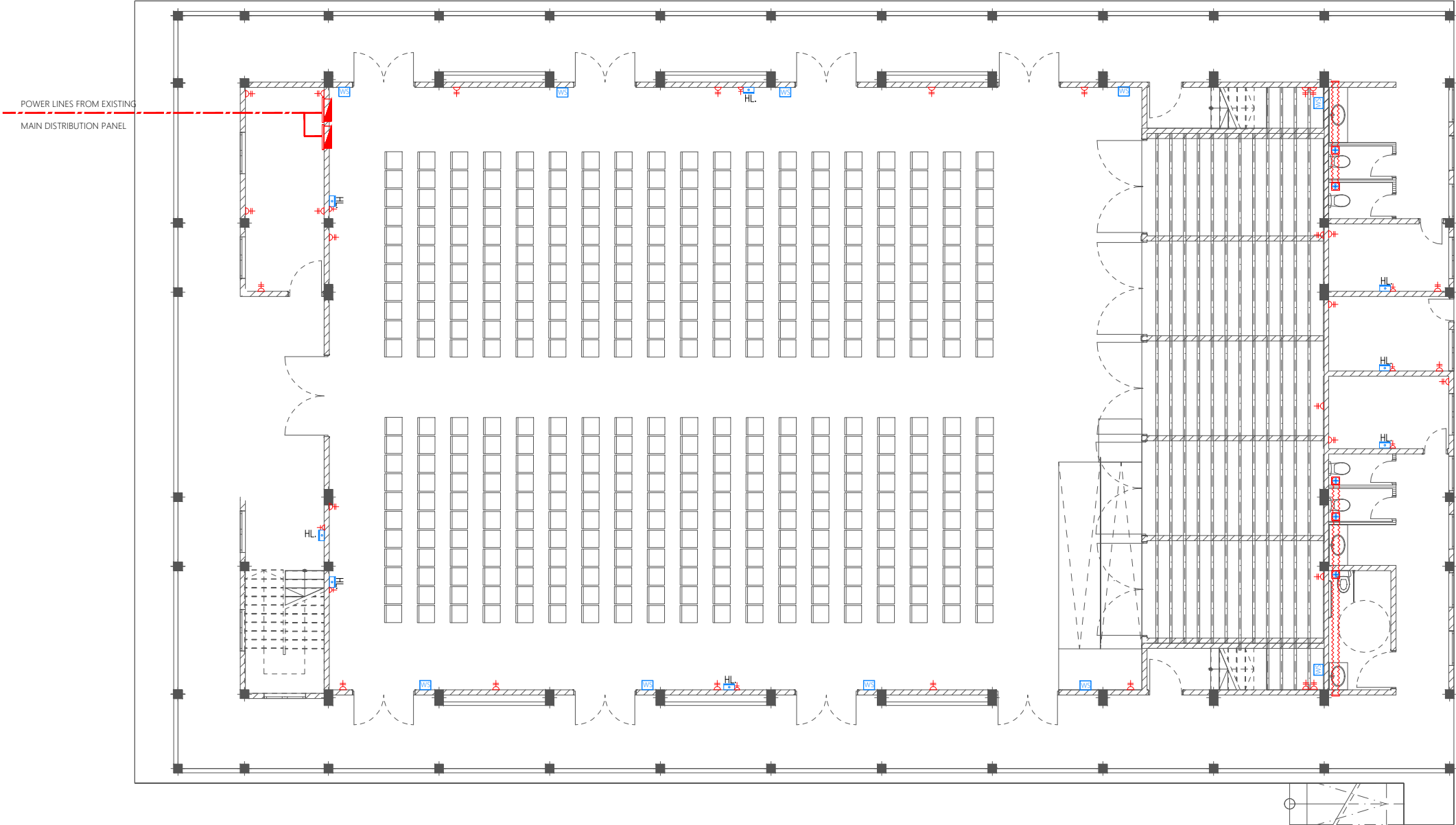
**EPOCH**

**T:** +960 333 3528 **E:** info@epoch.associates **W:** www.epoch.associates  
**A:** 3rd Floor, G.Rosary West, Husnuheena Magu, Male' Republic of Maldives

Legend

-  13A Twin Socket
-  13A Power Socket
-  Distribution Board
-  HL.
-  Telephone Outlet
-  Computer Network Outlet
-  Emergency Light
-  WS
-  Wall Mounted Speaker
-  Public Address System
-  Main Incoming Cable For Power PVC Duct Below Ground
-  Ceiling Mounted Exhaust Fan 90m3/hr

Notes: -  
- All Twin Sockets At 300mm From F.F.L. Except Stated Otherwise  
- All Computer, Telephone Points At 300mm From F.F.L.



GROUND FLOOR POWER AND ACV LAYOUT  
1:150

PROPOSED 02 STOREY BUILDING AT  
**MULTI PURPOSE  
HALL, HDH.  
NOLHIVARAM**

Client:  
**Ministry Of Education**

June 2021

Services By: **Mohamed Rassam**  
Checked By:  
Drawn By: **Hussain Rasheed**



**EPOCH**

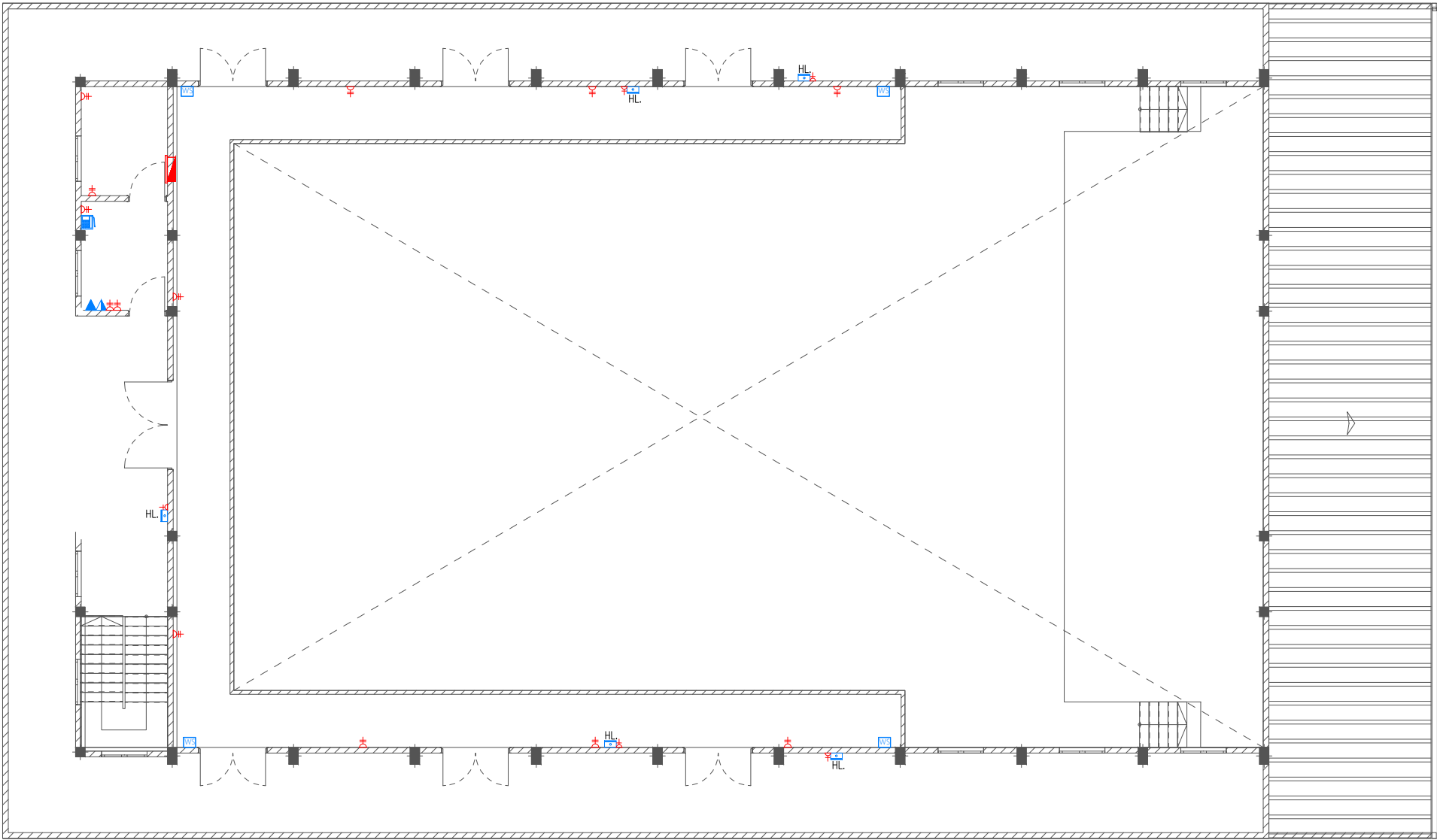
T: +960 333 3528, E: info@epoch.associates  
W: www.epoch.associates, A: G. Rosary West,  
Husnuheena Magu, Male' Republic of Maldives

Rev:	Page:
---	PAC-01
---	---
---	---

Legend

- 13A Twin Socket
- 13A Power Socket
- Distribution Board
- HL. High Level
- Telephone Outlet
- Computer Network Outlet
- Emergency Light
- WS Wall Mounted Speaker
- Public Address System
- Main Incoming Cable For Power PVC Duct Below Ground

Notes: -  
- All Twin Sockets At 300mm From F.F.L. Except Stated Otherwise  
- All Computer, Telephone Points At 300mm From F.F.L.



FIRST FLOOR POWER AND ACV LAYOUT  
1:150

PROPOSED 02 STOREY BUILDING AT  
**MULTI PURPOSE  
HALL, HDH.  
NOLHIVARAM**

Client:  
**Ministry Of Education**

June 2021

Services By: **Mohamed Rassam**  
Checked By:  
Drawn By: **Hussain Rasheed**




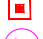





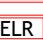




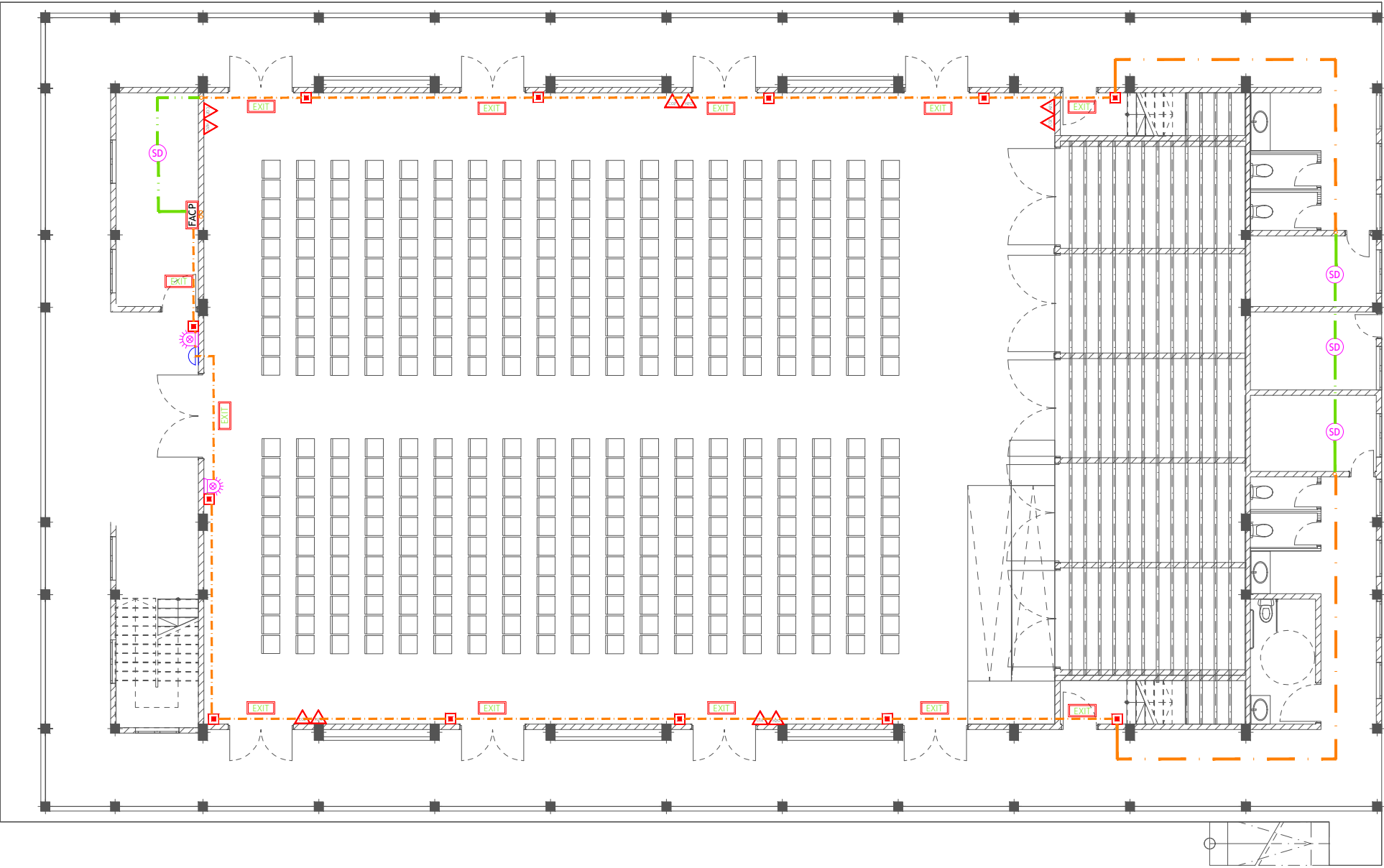
**EPOCH**

T: +960 333 3528, E: info@epoch.associates  
W: www.epoch.associates, A: G. Rosary West,  
Husnuheena Magu, Male' Republic of Maldives

Rev:	Page:
---	PAC-02
---	---
---	---

Legend

-  CO<sub>2</sub> Extinguisher (load: 2kg) In Polycarbonate Enclosure
-  DCP Extinguisher (load: 6kg) In Polycarbonate Enclosure
-  H<sub>2</sub>O Extinguisher (load: 9L) In Polycarbonate Enclosure
-  Manual Call Point (At 1200mm from F.F.L.)
-  Smoke Detector
-  Beacon
-  Sounder Bell
-  2.5mm<sup>2</sup> Fire Retardant Low Smoke (FRLS) Cables In FRLS Conduits (Running Underground)
-  2.5mm<sup>2</sup> Fire Retardant Low Smoke (FRLS) Cables In FRLS Conduits (Above False Ceiling or Through Slab)
-  Fire Alarm Control Panel
-  End Of Line Resistance
-  Exit Sign



PROPOSED 02 STOREY BUILDING AT

## MULTI PURPOSE HALL, HDH. NOLHIVARAM

Client:

Ministry Of Education

June 2021

Services By: Mohamed Rassam

Checked By:

Drawn By: Hussain Rasheed



EPOCH

T: +960 333 3528, E: info@epoch.associates  
W: www.epoch.associates, A: G. Rosary West,  
Husnuheena Magu, Male' Republic of Maldives

Rev:

---  
---  
---




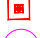





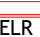


Page:

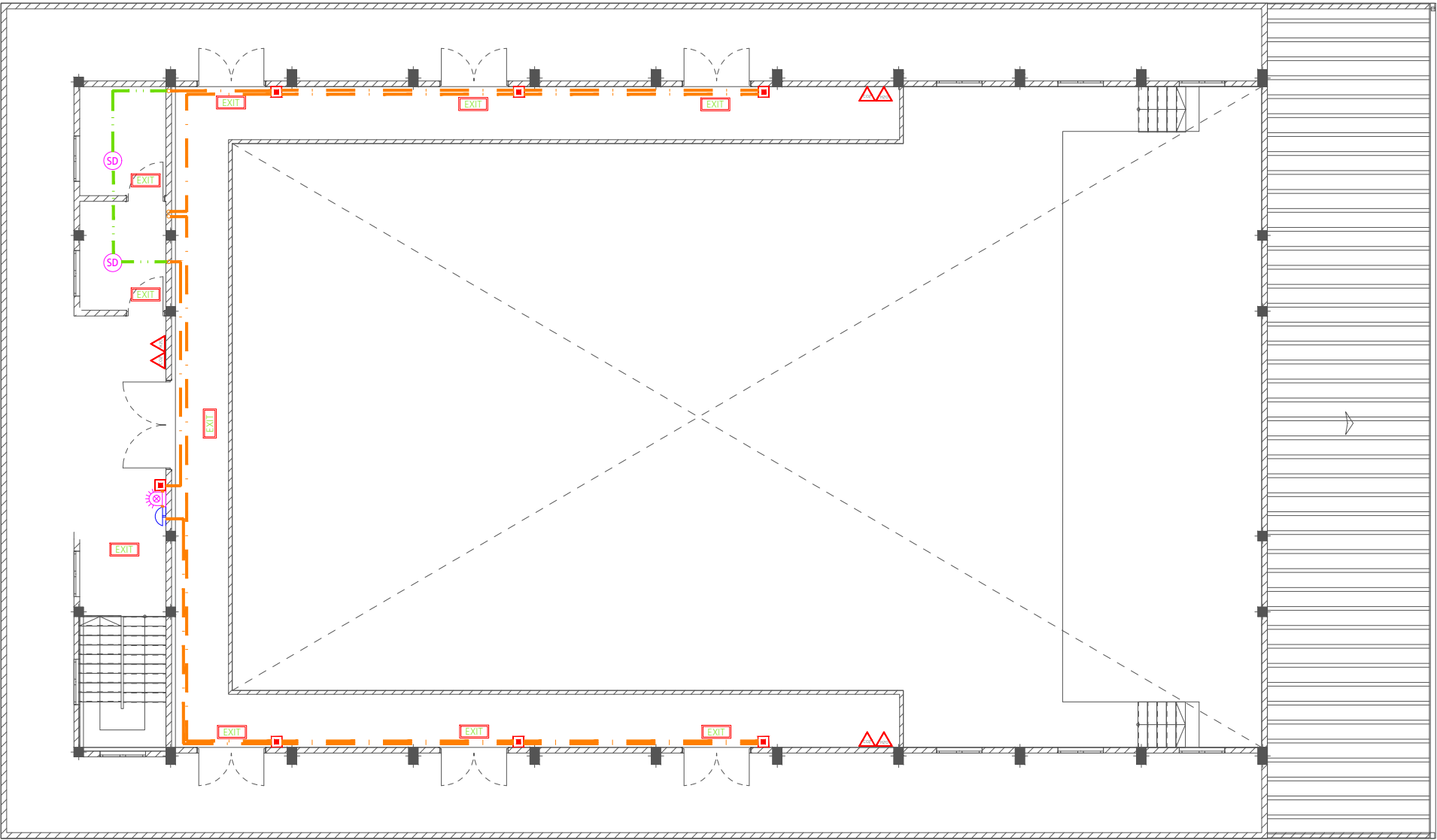
FDP -01

GROUND FLOOR FDP LAYOUT

1:150

Legend

-  CO<sub>2</sub> Extinguisher (load: 2kg) In Polycarbonate Enclosure
-  DCP Extinguisher (load: 6kg) In Polycarbonate Enclosure
-  H<sub>2</sub>O Extinguisher (load: 9L) In Polycarbonate Enclosure
-  Manual Call Point (At 1200mm from F.F.L.)
-  Smoke Detector
-  Beacon
-  Sounder Bell
-  2.5mm<sup>2</sup> Fire Retardant Low Smoke (FRLS) Cables In FRLS Conduits (Running Underground)
-  2.5mm<sup>2</sup> Fire Retardant Low Smoke (FRLS) Cables In FRLS Conduits (Above False Ceiling or Through Slab)
-  Fire Alarm Control Panel
-  End Of Line Resistance
-  Exit Sign



FIRST FLOOR FDP LAYOUT  
1:150

PROPOSED 02 STOREY BUILDING AT  
**MULTI PURPOSE  
HALL, HDH.  
NOLHIVARAM**  
Client:  
**Ministry Of Education**









June 2021

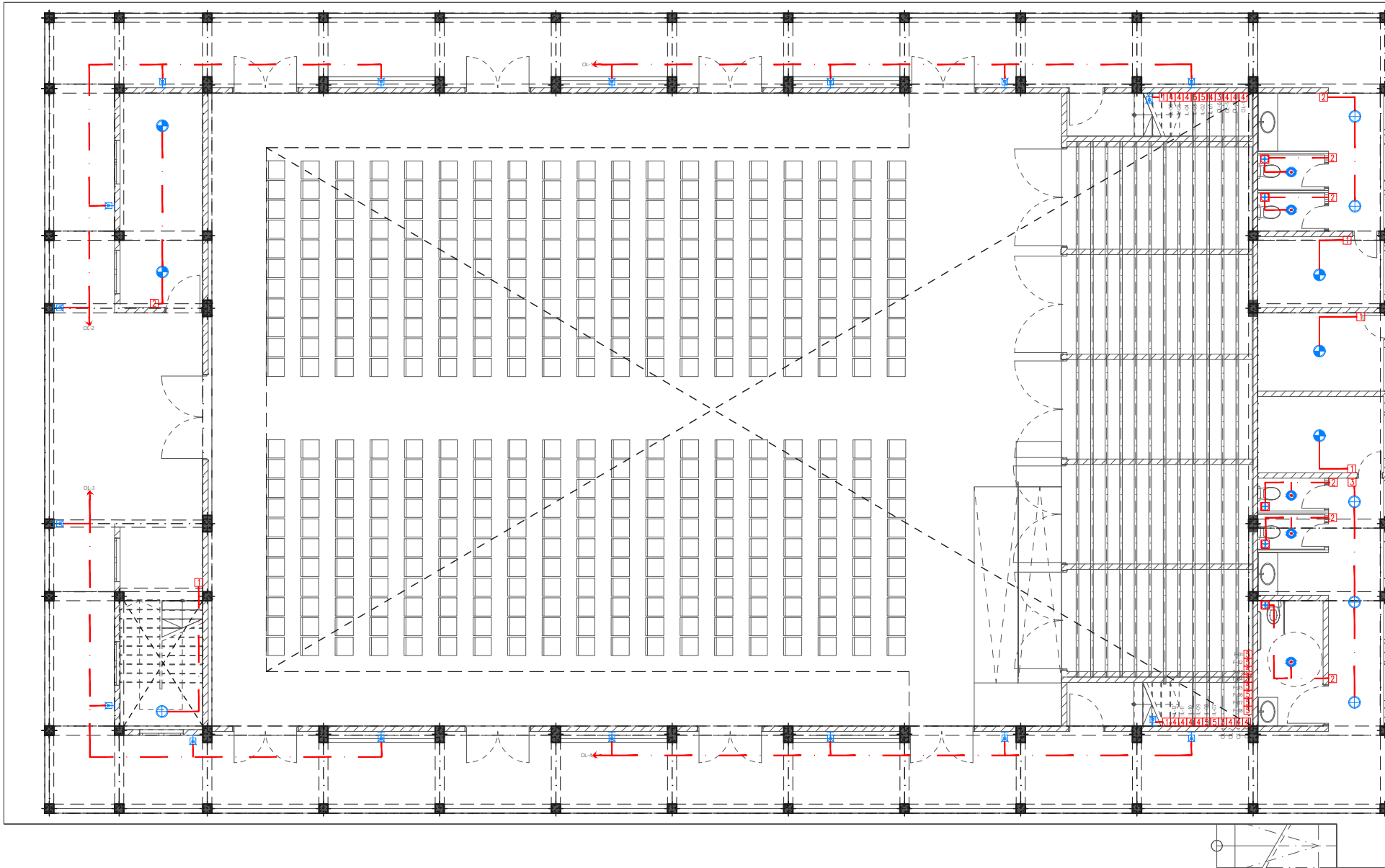
Services By: **Mohamed Rassam**  
Checked By:  
Drawn By: **Hussain Rasheed**

  
**EPOCH**  
T: +960 333 3528 | E: info@epoch.associates  
W: www.epoch.associates, A: G. Rosary West,  
Husnuheena Magu, Male' Republic of Maldives

Rev:	Page:
---	FDP -02
---	---
---	---

Legend

-  Ceiling Light (18W)
-  Ceiling Light (12W)
-  Recessed Ceiling Light (12W)
-  Weather Proof Wall Light IP55 (12W)
-  2 x 50W PLL Tube Light
-  Light and Fan Switch (1 Gang - 5 Gang)
-  42" To 48" Ceiling Fan
-  Ceiling Mounted Exhaust Fan 90m3/hr



GROUND FLOOR LIGHTING LAYOUT

1:150

PROPOSED 02 STOREY BUILDING AT

**MULTI PURPOSE  
HALL, HDH.  
NOLHIVARAM**

Client:

**Ministry Of Education**

June 2021

Services By: **Mohamed Rassam**

Checked By:

Drawn By: **Hussain Rasheed**



**EPOCH**

**T:** +960 333 3528, **E:** info@epoch.associates  
**W:** www.epoch.associates, **A:** G.Rosary West,  
Husnuheena Magu, Male' Republic of Maldives









Rev:

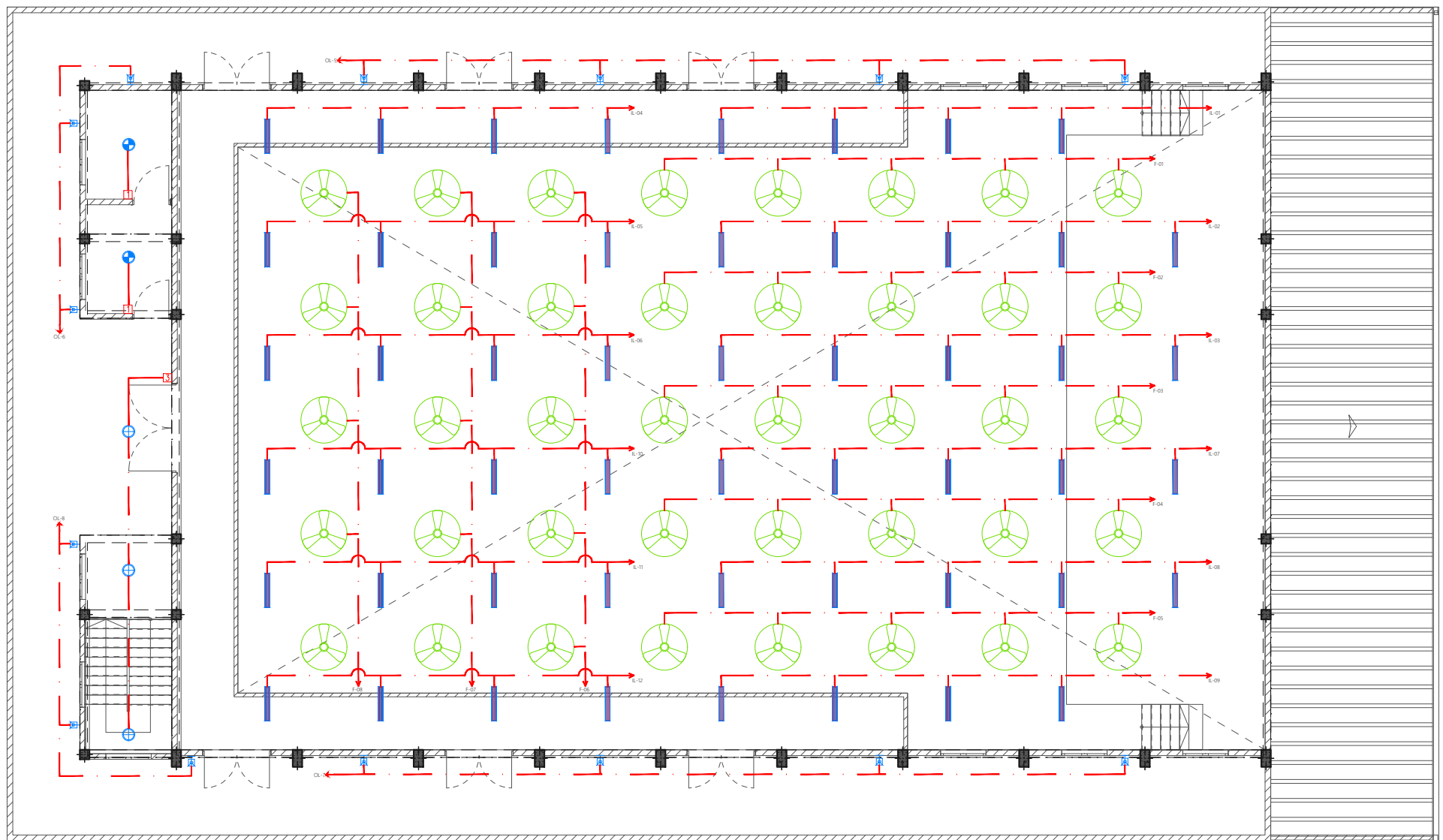
---  
---  
---

Page:

EL -01

Legend

-  Ceiling Light (18W)
-  Ceiling Light (12W)
-  Recessed Ceiling Light (12W)
-  Weather Proof Wall Light IP55 (12W)
-  2 x 50W PLL Tube Light
-  Light and Fan Switch (1 Gang - 5 Gang)
-  42" To 48" Ceiling Fan
-  Ceiling Mounted Exhaust Fan 90m3/hr



FIRST FLOOR LIGHTING LAYOUT  
1:150

PROPOSED 02 STOREY BUILDING AT  
**MULTI PURPOSE  
HALL, HDH.  
NOLHIVARAM**

Client:  
**Ministry Of Education**

June 2021

Services By: **Mohamed Rassam**  
Checked By:  
Drawn By: **Hussain Rasheed**



**EPOCH**

T: +960 333 3528, E: info@epoch.associates  
W: www.epoch.associates, A: G. Rosary West,  
Husnuheena Magu, Male' Republic of Maldives

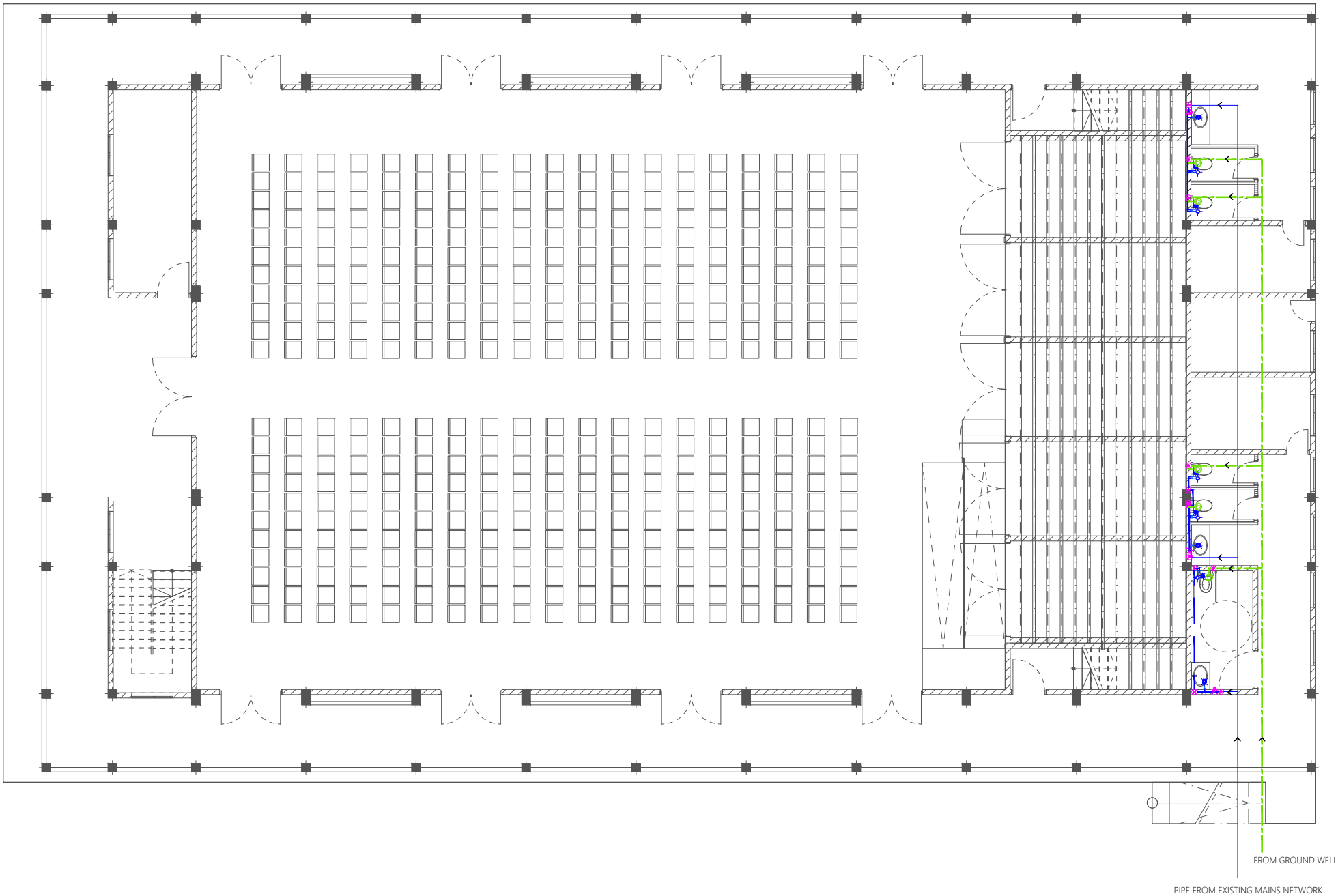
Rev:	Page:
---	EL -02
---	---
---	---

Legend

- 16Ø Cold Water Supply To Basin Faucet
- 16Ø Cold Water Supply To Bidet Shower
- 16Ø Cold Water Supply To Cistern
- Gate Valve
- Rise In Wall
- Drop In Wall
- Angle Valve with cap for Ground Water Supply
- 25Ø Cold Water Supply Pipes Running Underground
- 20Ø Cold Water Supply Pipes Running In Wall
- 20Ø Cold Water Supply Pipes Running Above False Ceiling
- 20Ø Cold Water Supply Pipes Running Underground
- 25Ø Ground Water Supply Pipes Running Above False Ceiling

Notes: -

- All Cold Water Pipes Should Be PVC
- SII Hot Water Pipes Should Be PPR



GROUND FLOOR PLUMBING LAYOUT

1:150

PROPOSED 02 STOREY BUILDING AT

**MULTI PURPOSE  
HALL, HDH.  
NOLHIVARAM**

Client:

**Ministry Of Education**

June 2021

Services By: **Mohamed Rassam**

Checked By:

Drawn By: **Hussain Rasheed**



**EPOCH**

**T:** +960 333 3528, **E:** info@epoch.associates  
**W:** www.epoch.associates, **A:** G.Rosary West,  
Husnuheena Magu, Male' Republic of Maldives

Rev:














---  
---  
---

Page:

PL -01

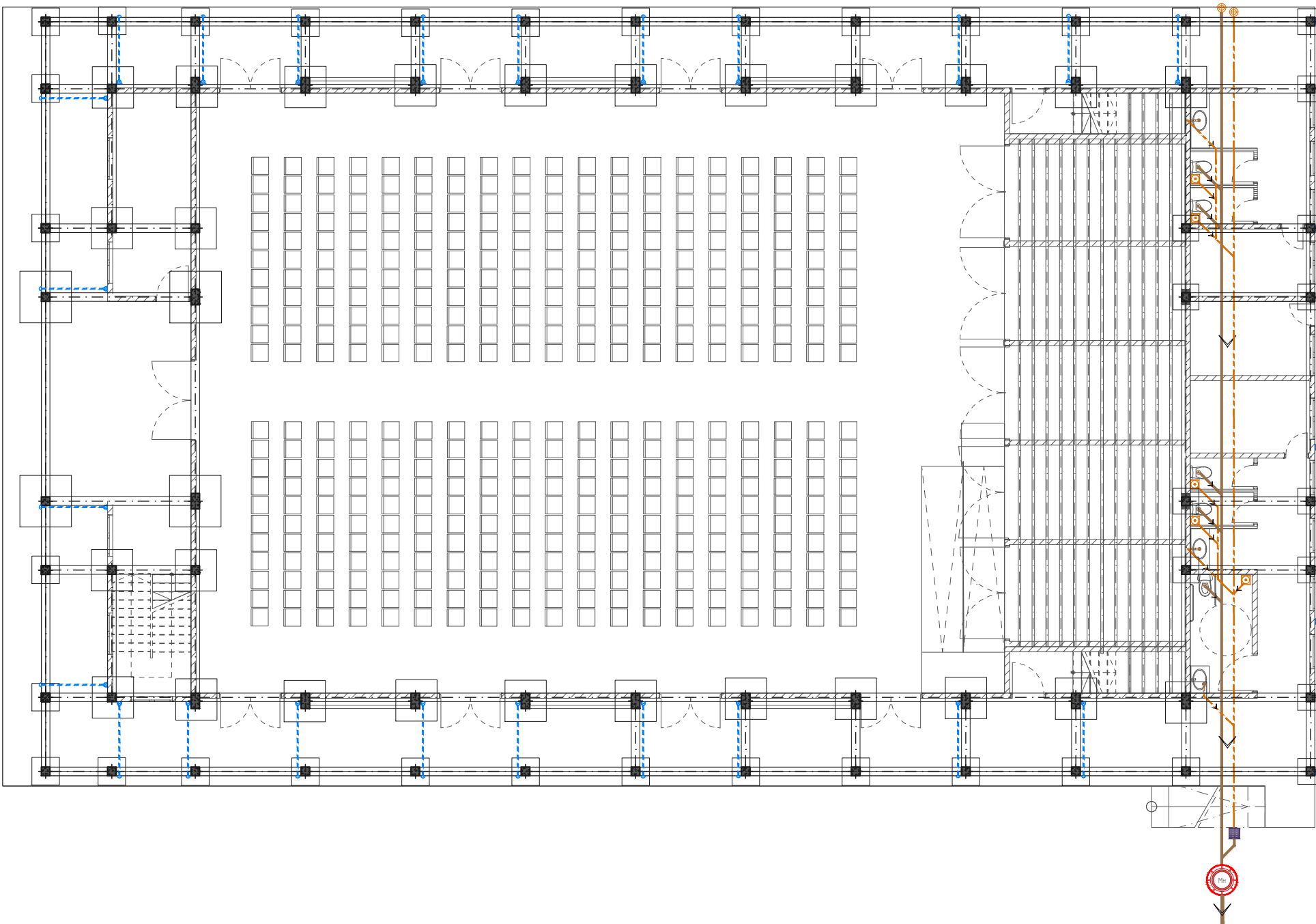


Legend

-  Floor Drain
-  110Ø Soil Pipe (uPVC Pipe)
-  110Ø Soil Vent Pipe (uPVC Pipe)
-  82Ø Waste Pipe (uPVC Pipe)
-  82Ø Waste Vent Pipe (uPVC Pipe)
-  40Ø Waste Pipe (uPVC Pipe)
-  63Ø Manhole Vent Pipe (uPVC Pipe)
-  110Ø Rain Water Pipes (uPVC Pipe)
-  Manhole
-  Gully Trap
-  110Ø Rainwater Outlet
-  Rodding Eye
-  Bottle Trap

Notes: -

- All Drainage Pipes Should Have At A Slope Of 1/150
- All Floor Drains Should Have 'P' Traps



CONNECTED TO EXISTING MAIN SEWER NETWORK

GROUND FLOOR DRAINAGE LAYOUT

1:150

PROPOSED 02 STOREY BUILDING AT

**MULTI PURPOSE  
HALL, HDH.  
NOLHIVARAM**

Client:

**Ministry Of Education**

June 2021

Services By: **Mohamed Rassam**

Checked By:

Drawn By: **Hussain Rasheed**



**EPOCH**

**T:** +960 333 3528, **E:** info@epoch.associates  
**W:** www.epoch.associates, **A:** G.Rosary West,  
Husnuheena Magu, Male' Republic of Maldives









Rev:

---  
---  
---

Page:

DR -01

Legend

-  Floor Drain
-  110Ø Soil Pipe (uPVC Pipe)
-  110Ø Soil Vent Pipe (uPVC Pipe)
-  82Ø Waste Pipe (uPVC Pipe)
-  82Ø Waste Vent Pipe (uPVC Pipe)
-  40Ø Waste Pipe (uPVC Pipe)
-  63Ø Manhole Vent Pipe (uPVC Pipe)
-  110Ø Rain Water Pipes (uPVC Pipe)



Manhole



Gully Trap



110Ø Rainwater Outlet



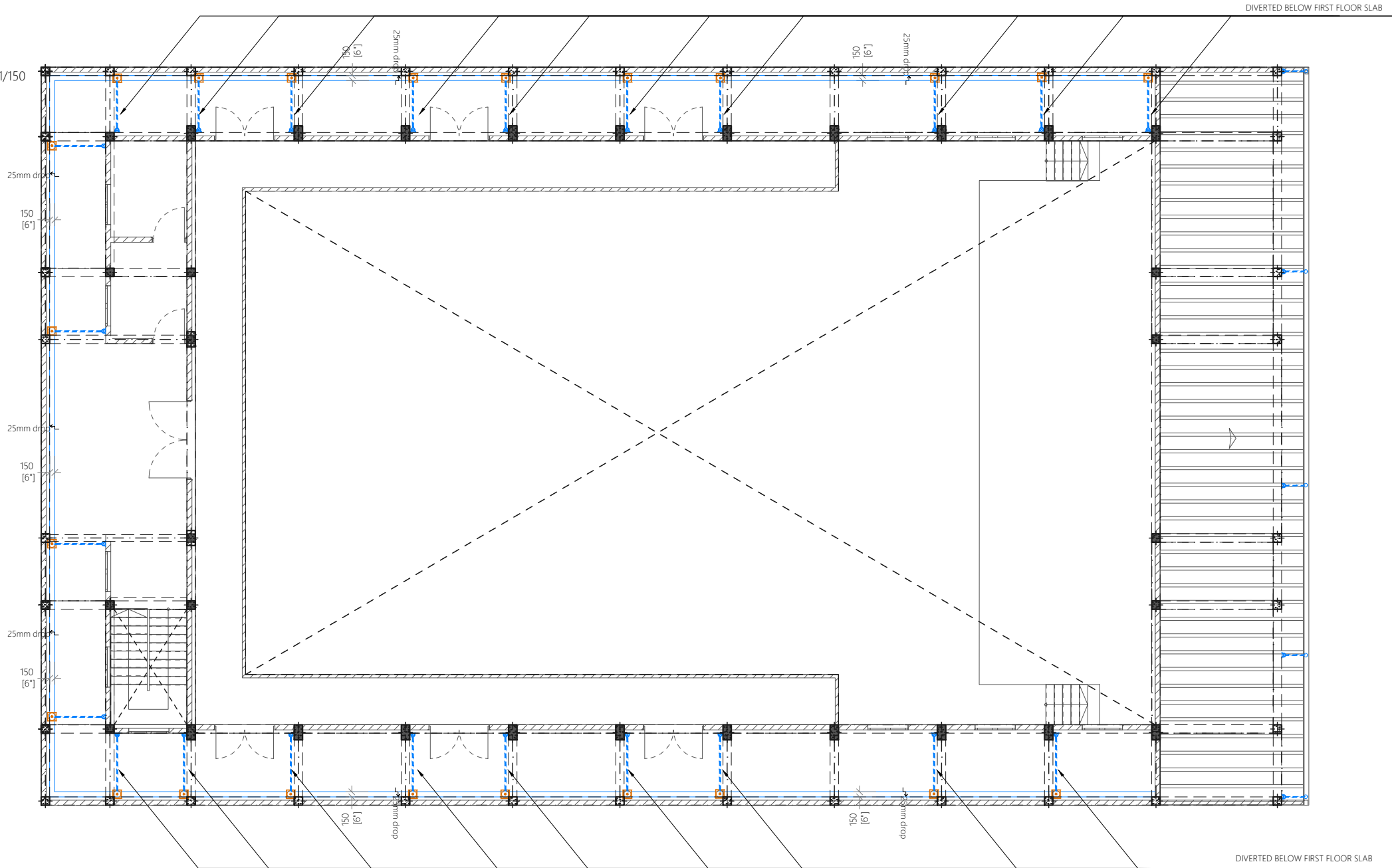
Rodding Eye



Bottle Trap

Notes: -

- All Drainage Pipes Should Have At A Slope Of 1/150
- All Floor Drains Should Have 'P' Traps



FIRST FLOOR DRAINAGE LAYOUT

1:150

PROPOSED 02 STOREY BUILDING AT  
**MULTI PURPOSE  
HALL, HDH.  
NOLHIVARAM**

Client:  
**Ministry Of Education**

June 2021

Services By: **Mohamed Rassam**  
Checked By:  
Drawn By: **Hussain Rasheed**





**EPOCH**


T: +960 333 3528, E: info@epoch.associates  
W: www.epoch.associates, A: G. Rosary West,  
Husnuheena Magu, Male' Republic of Maldives


Rev:	Page:
---	DR -02
---	
---	


Legend


 Floor Drain


 110Ø Soil Pipe (uPVC Pipe)


 110Ø Soil Vent Pipe (uPVC Pipe)


 82Ø Waste Pipe (uPVC Pipe)


 82Ø Waste Vent Pipe (uPVC Pipe)


 40Ø Waste Pipe (uPVC Pipe)


 63Ø Manhole Vent Pipe (uPVC Pipe)


 110Ø Rain Water Pipes (uPVC Pipe)

 Manhole

 Gully Trap

 110Ø Rainwater Outlet

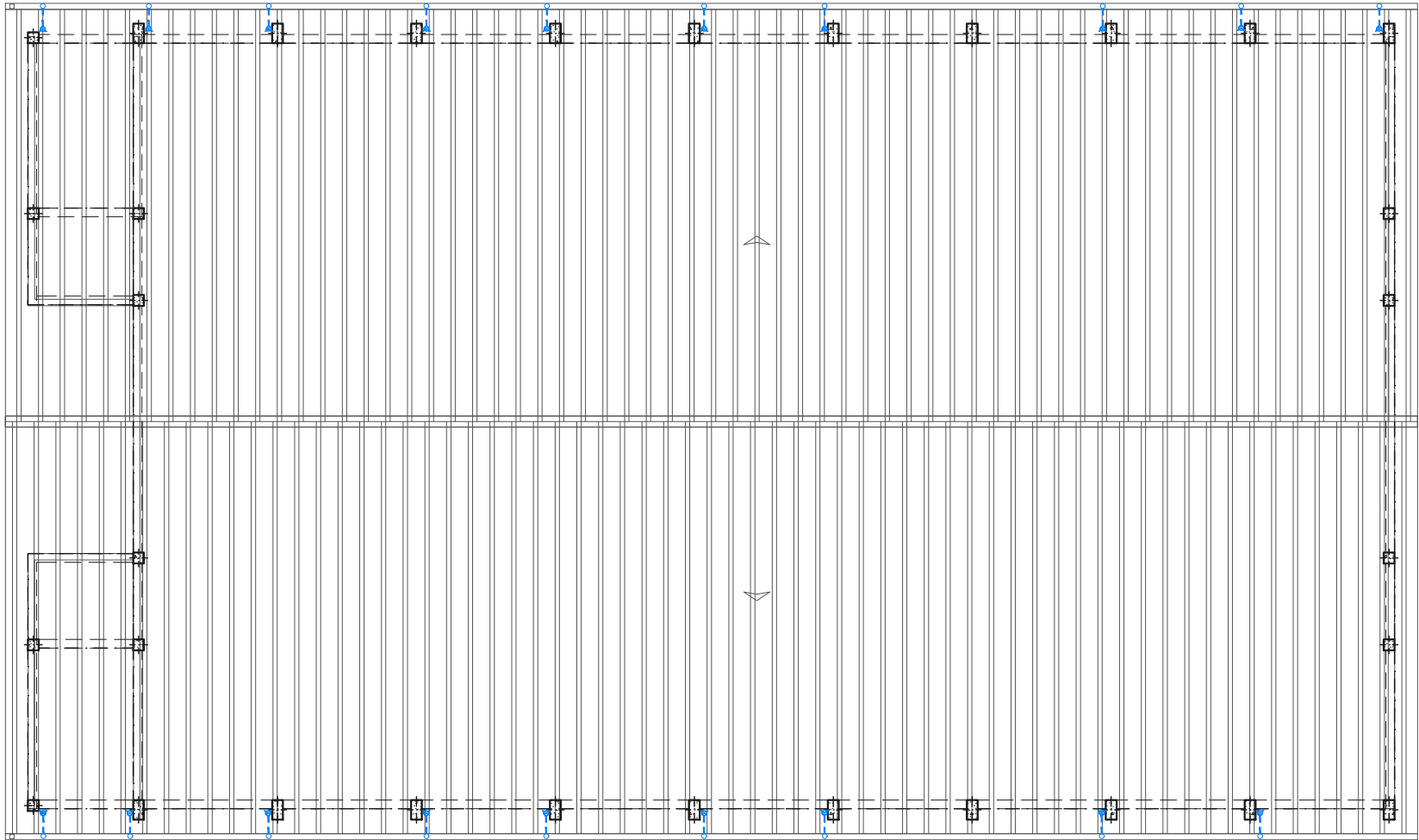
 Rodding Eye

 Bottle Trap

Notes: -

-All Drainage Pipes Should Have At A Slope Of 1/150

-All Floor Drains Should Have 'P' Traps



PROPOSED 02 STOREY BUILDING AT

**MULTI PURPOSE  
HALL, HDH.  
NOLHIVARAM**

Client:

**Ministry Of Education**

June 2021

Services By: **Mohamed Rassam**

Checked By:

Drawn By: **Hussain Rasheed**



**EPOCH**

**T:** +960 333 3528 **E:** info@epoch.associates

**W:** www.epoch.associates, **A:** G.Rosary West,  
Husnuheenaa Magu, Male' Republic of Maldives

Rev:	Page:
---	DR -03
---	
---	