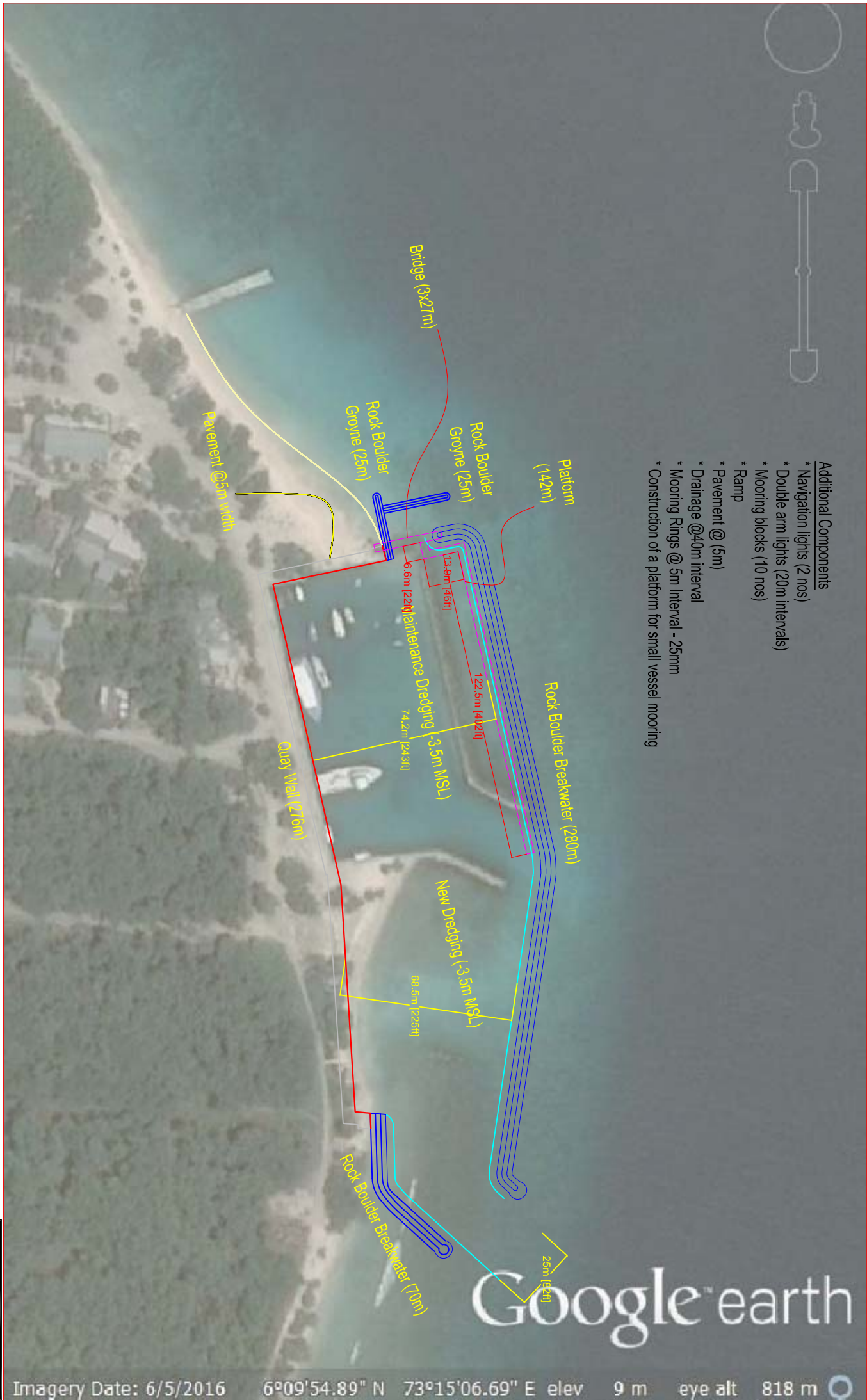




Additional Components

- \* Navigation lights (2 nos)
- \* Double arm lights (20m intervals)
- \* Mooring blocks (10 nos)
- \* Ramp
- \* Pavement @ (5m)
- \* Drainage @40m interval
- \* Mooring Rings @ 5m Interval - 25mm
- \* Construction of a platform for small vessel mooring



# SH.LHAIMAGU HARBOUR

PROJECT:	SH.LHAIMAGU HARBOUR		
COMPASS:	HARBOUR LAYOUT		
SCALE:	NTS	DWG NO.:	-
FILE:			
MINISTRY OF NATIONAL PLANNING & INFRASTRUCTURE REPRODUCTIVE DEPARTMENT KOROR, PALAU TEL: +680 330000, FAX: +680 330001			



# SH.LHAIMAGU SHORE PROTECTION

PROJECT: SH.LHAIMAGU HARBOUR	
COMMENTS: HARBOUR LAYOUT	
SCALE: NTS	DWG NO: -
FILE	
MINISTRY OF NATIONAL PLANNING & INFRASTRUCTURE REPUBLIC OF MALAYSIA TEL: +603 23000000, FAX: +603 23000001	