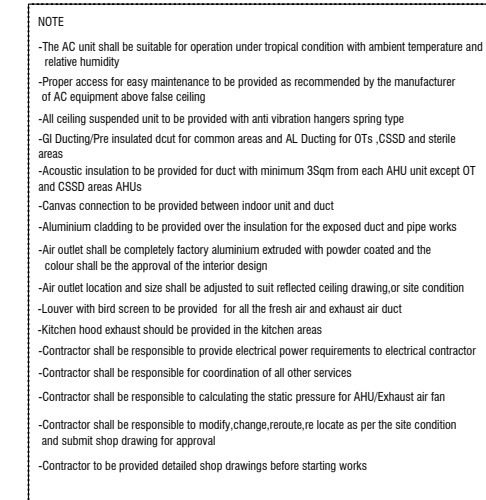


ACV LEGEND & ABBREVIATION	
	AIR HANDLING UNIT
	WALL MOUNTED UNIT
	4 WAY CASSETTE UNIT
	OUTDOOR UNIT (TOP DISCHARGE)
	OUTDOOR UNIT (SIDE DISCHARGE)
	CEILING MOUNTED EXHAUST FAN
	FRESH AIR/EXHAUST AIR FAN (DUCT IN LINE)
	WALL MOUNTED FAN
	REFRIGERANT PIPES WITH INSULATION
	AC DRAIN PIPES WITH INSULATION
	SUPPLY AIR DUCT WITH THERMAL INSULATION
	RETURN AIR DUCT WITH THERMAL INSULATION
	EXHAUST AIR DUCT
	FRESH AIR DUCT
	VOLUME CONTROL DAMPER
	SUPPLY AIR DIFFUSER WITH DAMPER
	RETURN AIR DIFFUSER WITH DAMPER
	EXHAUST AIR GRILL
	150MM WIDTH SUPPLY AND RETURN AIR GRILL
T/B	TO BELOW
T/A	TO ABOVE
F/A	FROM ABOVE
F/B	FROM BELOW
AHU	AIR HANDLING UNIT
TFA	TREATED FRESH AIR HANDLING UNIT
ODU	OUT DOOR UNIT

SPECIFICATION FOR VRF/VRV	
Outdoor Unit	Air cooled VRF / VRV system working in R410A / R-407C or equivalent refrigerant. The system shall be suitable to operate on 3 phase, 380-415 V, 50Hz AC power supply & shall comply with multiple no's of inverter, digital scroll/screw compressors, air cooled condenser fan with motor, microprocessor control panel, starter controls for all scroll compressors and condenser fan motors along with internal control and power wiring, cooling coil with internally interconnected refrigerant pipes, charging port and all other required accessories, & hardware's. The entire unit shall be with weather resistant powder coating paint for withstanding all ambient conditions for continuous outdoor operation
Indoor unit	Air Conditioning Units suitable for mounting inside false ceiling/wall hang, each comprising of cooling coil, blower with motor, electronic expansion valve, filter, insulated connection of refrigerant circuit, provision for fresh air intake ducting, condensate water drain pump with electronic level sensor, including wireless remote controller etc
Air Handling Unit (DX type)	AHU having GI double skin (0.6/0.8 mm thick ) sandwich panel ( PU injected foam with 45 mm thick, minimum density 40-50 kg/cu.m) with thermal break aluminum profile and heavy duty unit base. Air Handling Units complete with, dx coil (copper ), motor, SIS/ODD/OW fan, pre filter (MERV 7/8), and fine filters (MERV 13).
Air Handling Unit (DX type) for OT, ICU, Labour room, Sterile Areas and Accidents and Emergencies	AHU having GI double skin (0.6/0.8 mm thick ) sandwich panel ( PU injected foam with 45 mm thick, minimum density 40-50 kg/cu.m) with thermal break aluminum profile and heavy duty unit base. Air Handling Units complete with, dx coil (copper ), motor, SIS/ODD/OW fan, pre filter (MERV 7/8), fine filters (MERV 13) and HEPA Filter (H14)

NOTE	
-The AC unit shall be suitable for operation under tropical condition with ambient temperature and relative humidity	
-Proper access for easy maintenance to be provided as recommended by the manufacturer of AC equipment above false ceiling	
-All ceiling suspended unit to be provided with anti vibration hangers spring type	
-GI Ducting/Pre insulated duct for common areas and AL Ducting for OTs, CSSD and sterile areas	
-Acoustic insulation to be provided for duct with minimum 35sqm from each AHU unit except OT and CSSD areas AHUs	
-Canvas connection to be provided between indoor unit and duct	
-Aluminum cladding to be provided over the insulation for the exposed duct and pipe works	
-Air outlet shall be completely factory aluminum extruded with powder coated and the colour shall be the approval of the interior design	
-Air outlet location and size shall be adjusted to suit reflected ceiling drawing or site condition	
-Louver with bird screen to be provided for all the fresh air and exhaust air duct	
-Kitchen hood exhaust should be provided in the kitchen areas	
-Contractor shall be responsible to provide electrical power requirements to electrical contractor	
-Contractor shall be responsible for coordination of all other services	
-Contractor shall be responsible to calculating the static pressure for AHU/Exhaust air fan and submit shop drawing for approval	
-Contractor to be provided detailed shop drawings before starting works	



the contents of these drawings remain as a property of Ryan Private Limited. Any use other than those expressly stated is a violation of this copyright





ACV LEGEND & ABBREVIATION	
	AIR HANDLING UNIT
	WALL MOUNTED UNIT
	4 WAY CASSETTE UNIT
	OUTDOOR UNIT (TOP DISCHARGE)
	OUTDOOR UNIT (SIDE DISCHARGE)
	CEILING MOUNTED EXHAUST FAN
	FRESH AIR/EXHAUST AIR FAN (DUCT IN LINE)
	WALL MOUNTED FAN
	REFRIGERANT PIPES WITH INSULATION
	AC DRAIN PIPES WITH INSULATION
	SUPPLY AIR DUCT WITH THERMAL INSULATION
	RETURN AIR DUCT WITH THERMAL INSULATION
	EXHAUST AIR DUCT
	FRESH AIR DUCT
	VOLUME CONTROL DAMPER
	SUPPLY AIR DIFFUSER WITH DAMPER
	RETURN AIR DIFFUSER WITH DAMPER
	EXHAUST AIR GRILL
	150MM WIDTH SUPPLY AND RETURN AIR GRILL
T/B	TO BELOW
T/A	TO ABOVE
F/A	FROM ABOVE
F/B	FROM BELOW
AHU	AIR HANDLING UNIT
TFA	TREATED FRESH AIR HANDLING UNIT
ODU	OUT DOOR UNIT

SPECIFICATION FOR VRF/VRV	
Outdoor Unit	Air cooled VRF / VRV system working in R410A / R -407C or equivalent refrigerant. The system shall be suitable to operate on 3 phase, 380-415 V, 50Hz AC power supply & shall comprise with multiple no's of inverter, digital scroll/torue compressors, air cooled condenser fan with motor, microprocessor control panel, starter controls for all scroll compressors and condenser fan motors along with internal control and power wiring, cooling coil with internally interconnected refrigerant pipes, charging port and all other required accessories, & hardware's. The entire unit shall be with weather resistant powder coating paint for withstanding all ambient conditions for continuous outdoor operation
Indoor unit	Air Conditioning Units suitable for mounting inside false ceiling/wall hang, each comprising of cooling coil, blower fan motor, electronic expansion valve, filter, insulated connection of refrigerant circuit, provision for fresh air intake ducting, condensate water drain pump with electronic level sensor, including wireless remote controller etc
Air Handling Unit (GX type)	AHU having GI double skin (0.6/0.8 mm thick ) sandwich panel ( PU injected foam with 45 mm thick, minimum density 40-50 kg/cu.m) with thermal break aluminium profile and heavy duty unit base. Air Handling Units complete with, da coil (copper ), motor, SS/WDIW fan, pre filter (MERV 7/8) and fine filters (MERV 13 )
Air Handling Unit (GX type) for OT, NICU, Labour room, Sterile Areas and Accidents and Emergencies	AHU having GI double skin (0.6/0.8 mm thick ) sandwich panel ( PU injected foam with 45 mm thick, minimum density 40-50 kg/cu.m) with thermal break aluminium profile and heavy duty unit base. Air Handling Units complete with, da coil (copper ), motor, SS/WDIW fan, pre filter (MERV 7/8) and fine filters (MERV 13 ) and HEPA Filter(H14)

NOTE	
-The AC unit shall be suitable for operation under tropical condition with ambient temperature and relative humidity	
-Proper access for easy maintenance to be provided as recommended by the manufacturer of AC equipment above false ceiling	
-All ceiling suspended unit to be provided with anti vibration springs spring type GI Ducting/Pre insulated duct for common areas and AL Ducting for OTs, CSSD and sterile areas	
-Acoustic insulation to be provided for duct with minimum SSqm from each AHU unit except OT and CSSD areas AHUs	
-Canvases connection to be provided between indoor unit and duct	
-Aluminium cladding to be provided over the insulation for the exposed duct and pipe works	
-Air outlet shall be completely factory aluminium extruded with powder coated and the colour shall be the approval of the interior design	
-Air outlet location and size shall be adjusted to suit reflected ceiling drawing or site condition	
-Lower with blind screen to be provided for all the fresh air and exhaust air duct	
-Kitchen hood exhaust should be provided in the kitchen areas	
-Contractor shall be responsible to provide electrical power requirements to electrical contractor	
-Contractor shall be responsible for coordination of all other services	
-Contractor shall be responsible to calculating the static pressure for AHU/Exhaust air fan and submit shop drawing for approval	
-Contractor to be provided detailed shop drawings before starting works	

TERRACE FLOOR VENTILATION LAYOUT

SCALE 1:150  
0 0.5 1 2 3 4



ACV LEGEND & ABBREVIATION	
	AIR HANDLING UNIT
	WALL MOUNTED UNIT
	4 WAY CASSETTE UNIT
	OUTDOOR UNIT [TOP DISCHARGE]
	OUTDOOR UNIT [SIDE DISCHARGE]
	CEILING MOUNTED EXHAUST FAN
	FRESH AIR/EXHAUST AIR FAN [DUCT IN LINE]
	WALL MOUNTED FAN
	REFRIGERANT PIPES WITH INSULATION
	AC DRAIN PIPES WITH INSULATION
	SUPPLY AIR DUCT WITH THERMAL INSULATION
	RETURN AIR DUCT WITH THERMAL INSULATION
	EXHAUST AIR DUCT
	FRESH AIR DUCT
	VOLUME CONTROL DAMPER
	SUPPLY AIR DIFFUSER WITH DAMPER
	RETURN AIR DIFFUSER WITH DAMPER
	EXHAUST AIR GRILL
	150MM WIDTH SUPPLY AND RETURN AIR GRILL
T/B	TO BELOW
T/A	TO ABOVE
F/A	FROM ABOVE
F/B	FROM BELOW
AHU	AIR HANDLING UNIT
TFA	TREATED FRESH AIR HANDLING UNIT
ODU	OUT DOOR UNIT

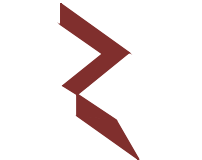
SPECIFICATION FOR VRF/VRV	
Outdoor Unit	Air cooled VRF / VRV system working in R410A / R-407C or equivalent refrigerant. The system shall be suitable to operate on 3 phase, 380-415 V, 50Hz AC power supply & shall comply with multiple no's of swivel, digital scroll/screw compressors, air cooled condenser fan with motor, microprocessor control panel, starter controls for all scroll compressors and condenser fan motors along with internal control and power wiring, cooling coil with internally interconnected refrigerant pipes, charging port and all other required accessories, & hardware's. The entire unit shall be with weather resistant powder coating paint for withstanding all ambient conditions for continuous outdoor operation
Indoor unit	Air Conditioning Units suitable for mounting inside false ceiling/wall hang, each comprising of cooling coil, blower with motor, electronic expansion valve, filter, insulated connection of refrigerant circuit, provision for fresh air intake ducting, condensate water drain pump with electronic level sensor, including wireless remote controller etc.
Air Handling Unit (DX type)	AHU having GI double skin (0.6/0.8 mm thick) sandwich panel ( PU injected foam with 45 mm thick, minimum density 40-50 kg/cu.m) with thermal break aluminium profile and heavy duty unit base. Air Handling Units complete with, oil coil (copper ), motor, SSW/DOWD fan, pre filter (MERV 7/8) and fine filters (MERV 13 ).
Air Handling Unit (DX type) for OT, ICU, Labour room, Sterile Areas and Accidents and Emergency	AHU having GI double skin (0.6/0.8 mm thick) sandwich panel ( PU injected foam with 45 mm thick, minimum density 40-50 kg/cu.m) with thermal break aluminium profile and heavy duty unit base. Air Handling Units complete with, oil coil (copper ), motor, SSW/DOWD fan, pre filter (MERV 7/8) , fine filters (MERV 13) and HEPA Filter(H14)

NOTE	
-The AC unit shall be suitable for operation under tropical condition with ambient temperature and relative humidity	
-Proper access for easy maintenance to be provided as recommended by the manufacturer of AC equipment above false ceiling	
-All ceiling suspended unit to be provided with anti vibration hangers spring type	
-GI Ducting/Pre insulated duct for common areas and AL Ducting for OTs, CSSD and sterile areas	
-Acoustic insulation to be provided for duct with minimum 35sqm from each AHU unit except OT and CSSD areas AHUs	
-Canvas connection to be provided between indoor unit and duct	
-Aluminium cladding to be provided over the insulation for the exposed duct and pipe works	
-Air outlet shall be completely factory aluminium extruded with powder coated and the colour shall be the approval of the interior design	
-Air outlet location and size shall be adjusted to suit reflected ceiling drawing or site condition	
-Lower with bird screen to be provided for all the fresh air and exhaust air duct	
-Kitchen hood exhaust should be provided in the kitchen areas	
-Contractor shall be responsible to provide electrical power requirements to electrical contractor	
-Contractor shall be responsible for coordination of all other services	
-Contractor shall be responsible to calculating the static pressure for AHU/Exhaust air fan	
-Contractor shall be responsible to modify, change, reroute, re locate as per the site condition and submit shop drawing for approval	
-Contractor to be provided detailed shop drawings before starting works	

HDh. Makunudhoo Health Center  
Client: Ministry of Health

Rev no	Date
1	11/03/2023
2	11/03/2023
3	11/03/2023

Project Number: 037125MCH - HDHM  
Date: March 2023  
Architect : Razana Amir  
Engineer : Zinaam Hassan Yousuf  
Drawn by : Razana Amir  
Checked by : Zinaam Hassan Yousuf  
Interior : -



RIYAN PRIVATE LIMITED  
t : +9603375049 f : +9603310776  
e : info@riyan.com.mv  
w : www.riyan.com.mv  
3rd floor, H. Azam, Ammeenemogaa, Malé

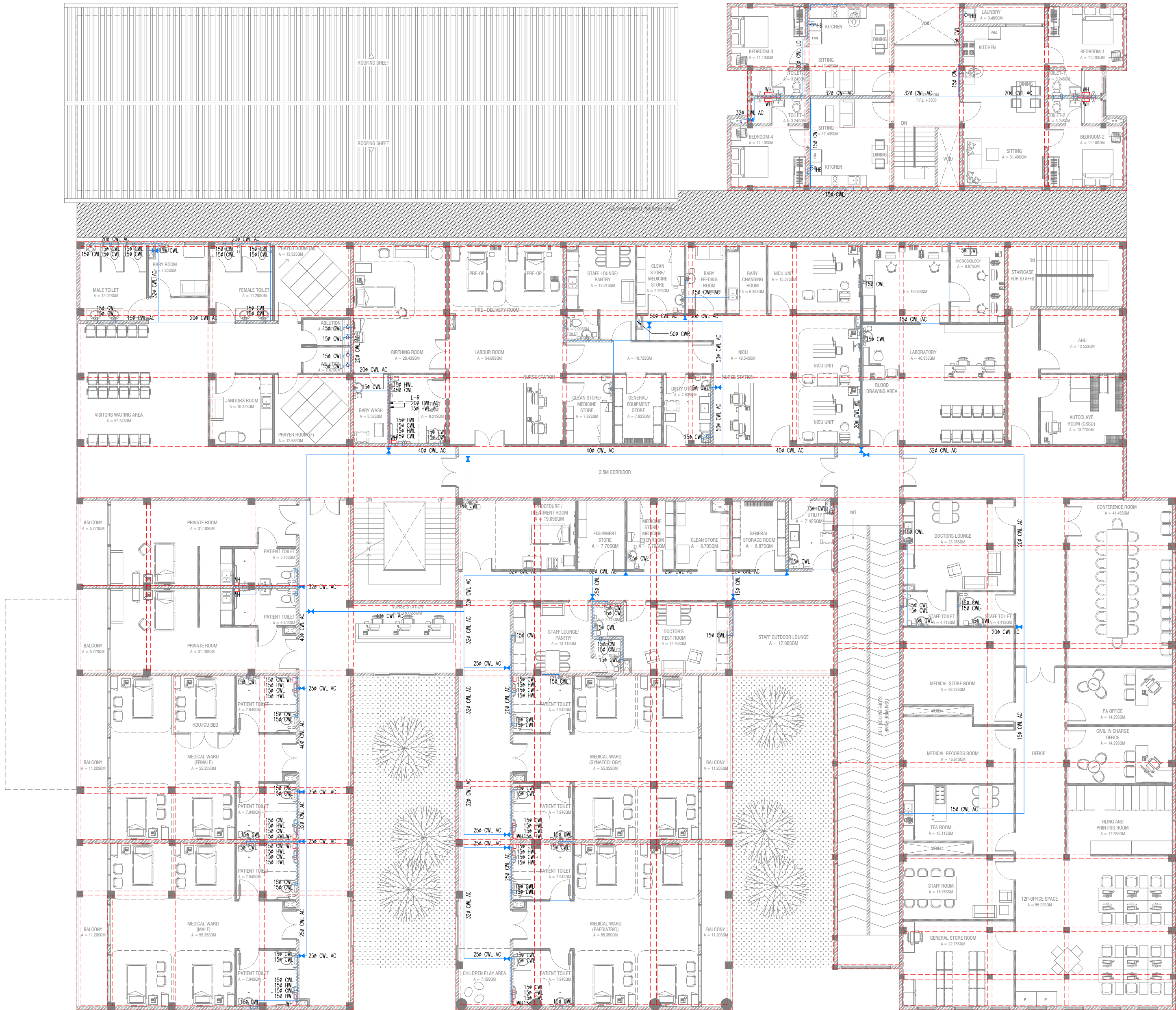
Title: Terrace Floor  
Ventilation Layout  
Page: ACV-06 /06

The contents of these drawings remain as a property of Riyan Private Limited. Any use other than those expressly stated is a violation of this copyright.







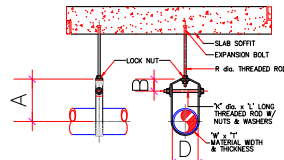


GENERAL NOTES:

- ALL PLUMBING WORKS INCLUDED HEREIN SHALL BE EXECUTED ACCORDING TO THE PROVISIONS OF THE PLUMBING CODE OF THE MALDIVES. IN THE ABSENCE THEREOF, SHALL BE IN ACCORDANCE WITH ACCEPTABLE INTERNATIONAL CODE AND STANDARDS.
- COORDINATE THE DRAWING WITH OTHER RELATED DRAWINGS AND SPECIFICATION. THE ENGINEER SHALL BE NOTIFIED IMMEDIATELY OF ANY DISCREPANCY FOUND THEREIN.
- ALL PIPES SHALL BE INSTALLED AS INDICATED ON PLANS. ANY RELOCATIONS REQUIRED FOR PROPER EXECUTION OF OTHER TRADE SHALL BE WITH PRIOR APPROVAL OF THE ARCHITECT OR ENGINEER.
- PROPOSED SANITARY UTILITIES SHALL CONFORM TO THE ACTUAL LOCATION, DEPTH AND INVERT ELEVATION OF ALL EXISTING PIPES AND STRUCTURES AS VERIFIED BY THE CONTRACTOR.
- ALL SLOPES FOR HORIZONTAL DRAINAGE SHALL MAINTAIN 1% UNLESS OTHERWISE SPECIFIED.
- SIZE OF WATER SUPPLY PIPES TO FIXTURES SHALL BE IN ACCORDANCE WITH THE MANUFACTURER'S INSTRUCTIONS.
- THE CONTRACTOR SHALL VERIFY ALL EXISTING UTILITIES AT SITE. COORDINATE THE WORKS WITH THE SEWER LINE EFFLUENT DISPOSAL POINT AND WATER LINE SERVICE CONNECTING POINT.
- ALL PIPE SIZES ARE IN MILLIMETERS AND ALL DIMENSIONS ARE IN METERS UNLESS OTHERWISE SPECIFIED.
- THE PROPOSED UTILITIES SHALL BE MADE TO CONFORM TO THE ACTUAL LOCATION, TAPPING POINT, DEPTH AND INVERT LEVELS OF ALL EXISTING PIPES AND STRUCTURES AS VERIFIED BY THE CONTRACTOR.
- ALL PIPE DIAMETER INDICATED ON PLANS ARE NOMINAL PIPE SIZES.
- VENT AND WASTE STACK TO CONNECT TO SOIL PIPE. SOIL PIPE STACK AS MAIN SOIL AND WASTE VENT THRU ROOF.

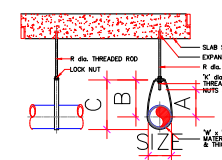
LEGEND:

WATER DISTRIBUTION SYSTEM	
CWL	COLD WATER LINE
HWL	HOT WATER LINE
CWL/CHW	COLD WATER RISE/DROPPED
SV/VS	DATE VALVE / DRAIN VALVE / ISOLATION VALVE
CV	CHECK VALVE
HD	HOSE BIBS
WM	WATER METER
WASTE, DRAINAGE, SEWER & VENT SYSTEM	
SP	SEWER PIPE
WP	WASTE PIPE
VP	VENT PIPE
RWP	RANWATER PIPE
SS/RS/W	SOIL/SEWER / WHITE STACK
VSTR	VENT STACK THRU ROOF
FDS/SD	FLOOR/STANDARD DRAIN/OUTLET
GD/WD	GROUNDWALL DRAIN/OUTLET
FD	FLOOR DRAIN TRAP
FS	FLOOR DRAIN GULLY TRAP
SD/ST	SOUPPER DRAIN IN OUTLET
AD	AREA DRAIN (WALL, SINK, TUB, SHOWER)
L-R	LEFT TO RIGHT
T-B	TOP TO BOTTOM
US/DS	UNDERGROUND / UNDERFLOOR
AC	ABOVE CEILING
RACP	RANWATER COLLECTOR PIPE
OP / OF	OVERFLOW PIPE / OVERFLOW



ELEVATION

STANDARD CLEVIS HANGERS	
SIZE	LENGTH
34	40
40	45
45	50
50	55
55	60
60	65
65	70
70	75
75	80
80	85
85	90
90	95
95	100
100	105
105	110
110	115
115	120
120	125
125	130
130	135
135	140
140	145
145	150
150	155
155	160
160	165
165	170
170	175
175	180
180	185
185	190
190	195
195	200



ELEVATION

TRAPEZE HANGERS	
SIZE	LENGTH
20	25
25	30
30	35
35	40
40	45
45	50
50	55
55	60
60	65
65	70
70	75
75	80
80	85
85	90
90	95
95	100
100	105
105	110
110	115
115	120
120	125
125	130
130	135
135	140
140	145
145	150
150	155
155	160
160	165
165	170
170	175
175	180
180	185
185	190
190	195
195	200

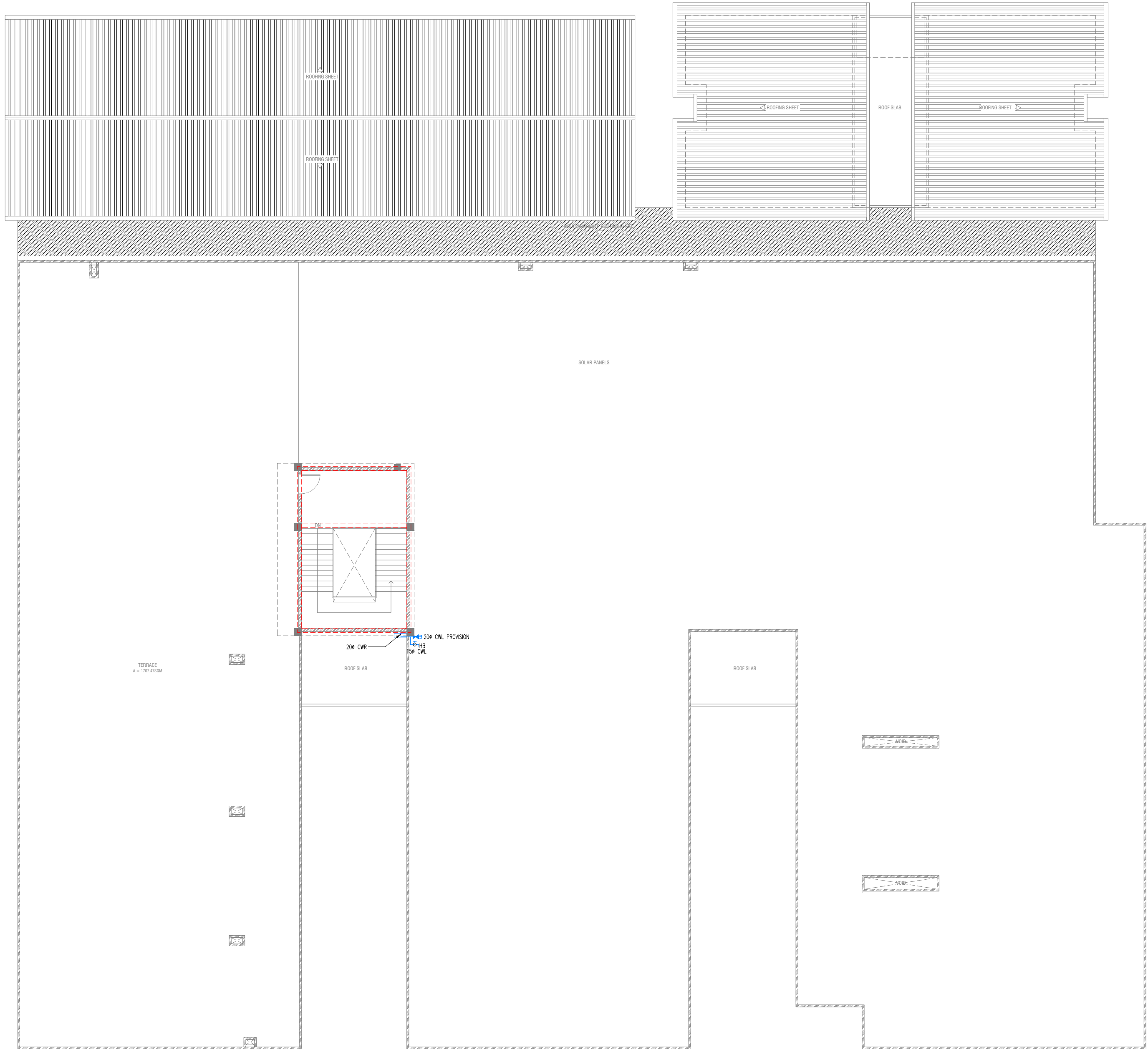
DETAILS OF PIPE HANGERS  
NTS



TERRACE FLOOR  
PLUMBING LAYOUT

SCALE 1:150

0 0.5 1 2 3 4

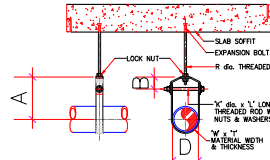


GENERAL NOTES:

- ALL PLUMBING WORKS INCLUDED HEREIN SHALL BE EXECUTED ACCORDING TO THE PROVISIONS OF THE PLUMBING CODE OF THE MALDIVES. IN THE ABSENCE THEREOF, SHALL BE IN ACCORDANCE WITH ACCEPTABLE INTERNATIONAL CODE AND STANDARDS.
- COORDINATE THE DRAWING WITH OTHER RELATED DRAWINGS AND SPECIFICATION. THE ENGINEER SHALL BE NOTIFIED IMMEDIATELY OF ANY DISCREPANCY FOUND THEREIN.
- ALL PIPES SHALL BE INSTALLED AS INDICATED ON PLANS. ANY RELOCATIONS REQUIRED FOR PROPER EXECUTION OF OTHER TRADE SHALL BE WITH PRIOR APPROVAL OF THE ARCHITECT OR ENGINEER.
- PROPOSED SANITARY UTILITIES SHALL CONFORM TO THE ACTUAL LOCATION, DEPTH AND INVERT ELEVATION OF ALL EXISTING PIPES AND STRUCTURES AS VERIFIED BY THE CONTRACTOR.
- ALL SLOPES FOR HORIZONTAL DRAINAGE SHALL MAINTAIN 1% UNLESS OTHERWISE SPECIFIED.
- SIZE OF WATER SUPPLY PIPES TO FIXTURES SHALL BE IN ACCORDANCE WITH THE MANUFACTURER'S INSTRUCTIONS.
- THE CONTRACTOR SHALL VERIFY ALL EXISTING UTILITIES AT SITE, COORDINATE THE WORKS WITH THE SENER LINE EFFLUENT DISPOSAL POINT AND WATER LINE SERVICE CONNECTING POINT.
- ALL PIPE SIZES ARE IN MILLIMETERS AND ALL DIMENSIONS ARE IN METERS UNLESS OTHERWISE SPECIFIED.
- THE PROPOSED UTILITIES SHALL BE MADE TO CONFORM TO THE ACTUAL LOCATION, TAPPING POINT, DEPTH AND INVERT LEVELS OF ALL EXISTING PIPES AND STRUCTURES AS VERIFIED BY THE CONTRACTOR.
- ALL PIPE DIAMETER INDICATED ON PLANS ARE NOMINAL PIPE SIZES.
- VENT AND WASTE STACK TO CONNECT TO SOIL PIPE. SOIL PIPE STACK AS MAIN SOIL AND WASTE VENT THRU ROOF.

LEGEND:

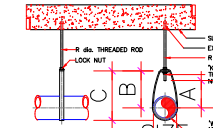
WATER DISTRIBUTION SYSTEM	
CWL	COLD WATER LINE
HWL	HOT WATER LINE
CWR/CWRP	COLD WATER RISER/DOWNFALL
DV/DV	GATE VALVE / DRAIN VALVE / ISOLATION VALVE
CV	CHECK VALVE
HD	HOT WATER
HW	WATER METER
WASTE, DRAINAGE, SEWER & VENT SYSTEM	
SP	SEWER PIPE
WP	WASTE PIPE
VP	VENT PIPE
RWP	RAINWATER PIPE
RO/RO	ROOF/JOINT PASTIC STACK
VS	VENT STACK THRU ROOF
FG/FG	FLOOR/GRAND CLEANOUT
FG/FG	CLEANING/PAINT CLEANOUT
FG/FG	FLOOR DRAIN GULLY TRAP
FG	FLOOR DRAIN GULLY TRAP
FG 90	SCUPPER DRAIN 90 DEGREE OUTLET
FG	HECK DRAIN (W/IN. DOWN/UP)
L-R	LEFT TO RIGHT
T-B	TOP TO BOTTOM
W/S	UNDERPASSING / UNDERLAP
AC	ABOVE CEILING
RWP	RAINWATER COLLECTOR PIPE
OFF / OF	OVERFLOW PIPE / OVERFLOW



STANDARD CLEVIS HANGERS

TABLE OF DIMENSIONS

SIZE	W	H	L	W	H	L
34	80	40	12	25 x 3	WID x 70	
41	80	50	12	25 x 3	WID x 80	
48	95	50	12	25 x 3	WID x 85	
45	105	55	12	25 x 3	WID x 100	
76	115	60	14	40 x 6	WID x 110	
84	125	60	14	40 x 6	WID x 130	
114	145	65	15	40 x 6	WID x 140	
140	160	75	18	40 x 6	WID x 160	
165	180	80	18	40 x 6	WID x 200	



TRAPEZE HANGERS

TABLE OF DIMENSIONS IN MM

SIZE	W	H	L	W	H	L
25	110	28	80	75	22	1.8
30	110	28	80	75	22	1.8
40	110	28	80	75	22	1.8
50	110	28	80	75	22	1.8
65	110	28	80	75	22	1.8
75	110	28	80	75	22	1.8
100	140	40	100	100	30	2.5
150	200	60	150	150	40	2.5

DETAILS OF PIPE HANGERS  
NTS

HDh. Makunudhoo Health Center  
Client: Ministry of Health

Rev no	Date
1	11/03/2023
2	11/03/2023
3	11/03/2023
4	11/03/2023



RIYAN PRIVATE LIMITED

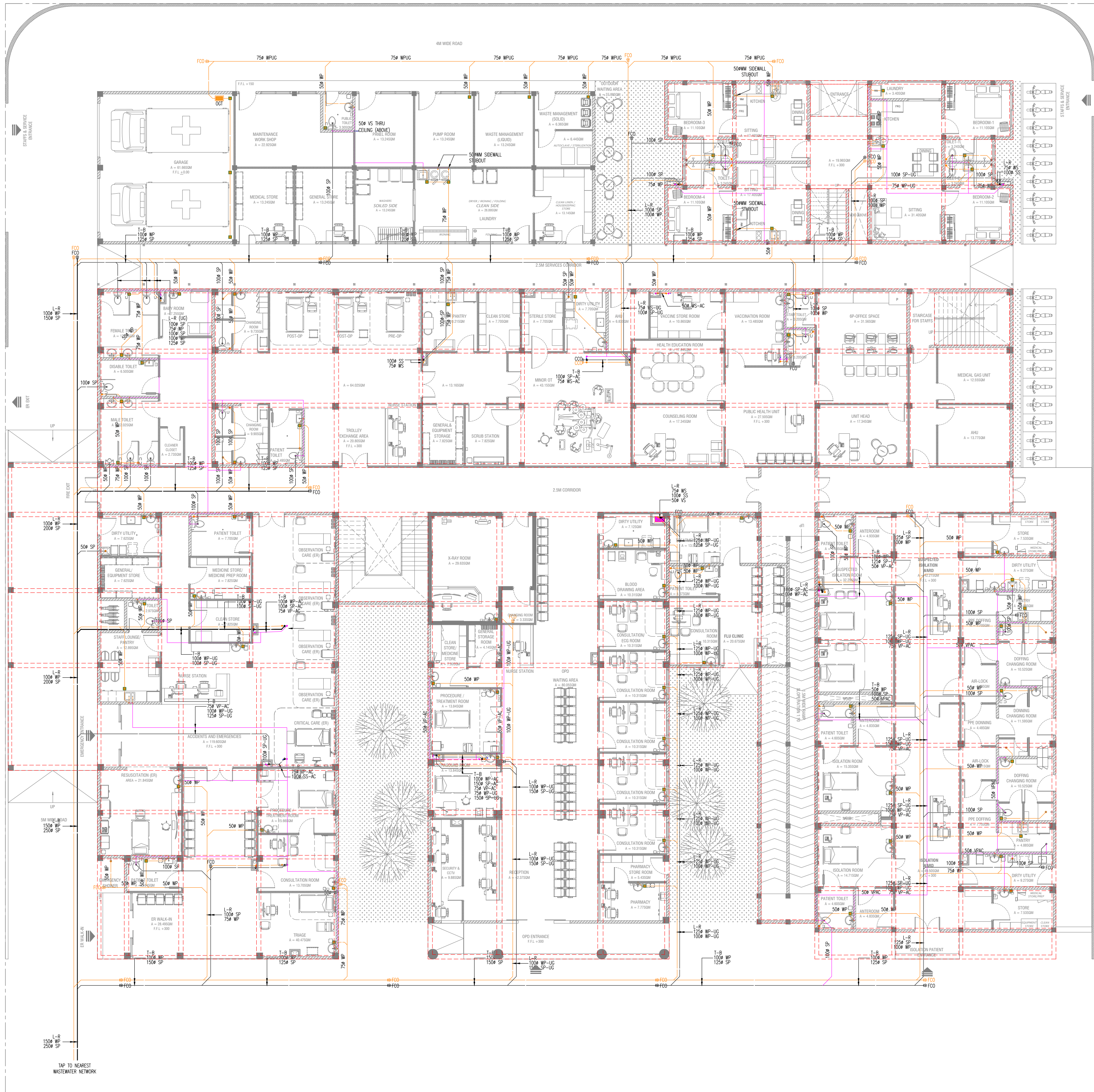
T: +9603375049 F: +9603310776  
E: info@riyan.com.mv  
W: www.riyan.com.mv  
3rd floor, H. Azam, Ammeenemogga, Malé

Title: Terrace Floor  
Plumbing Layout

Page: PL-03 /03

The contents of these drawings remain as a property of Riyan Private Limited. Any use other than those expressly stated is a violation of this copyright.



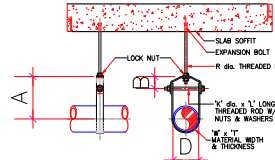


GENERAL NOTES:

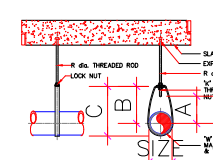
- ALL PLUMBING WORKS INCLUDED HEREIN SHALL BE EXECUTED ACCORDING TO THE PROVISIONS OF THE PLUMBING CODE OF THE MALDIVES. IN THE ABSENCE THEREOF, SHALL BE IN ACCORDANCE WITH ACCEPTABLE INTERNATIONAL CODE AND STANDARDS.
- COORDINATE THE DRAWING WITH OTHER RELATED DRAWINGS AND SPECIFICATION. THE ENGINEER SHALL BE NOTIFIED IMMEDIATELY OF ANY DISCREPANCY FOUND THEREIN.
- ALL PIPES SHALL BE INSTALLED AS INDICATED ON PLANS. ANY RELOCATIONS REQUIRED FOR PROPER EXECUTION OF OTHER TRADE SHALL BE WITH PRIOR APPROVAL OF THE ARCHITECT OR ENGINEER.
- PROPOSED SANITARY UTILITIES SHALL CONFORM TO THE ACTUAL LOCATION, DEPTH AND INVERT ELEVATION OF ALL EXISTING PIPES AND STRUCTURES AS VERIFIED BY THE CONTRACTOR.
- ALL SLOPES FOR HORIZONTAL DRAINAGE SHALL MAINTAIN 1% UNLESS OTHERWISE SPECIFIED.
- SIZE OF WATER SUPPLY PIPES TO FIXTURES SHALL BE IN ACCORDANCE WITH THE MANUFACTURER'S INSTRUCTIONS.
- THE CONTRACTOR SHALL VERIFY ALL EXISTING UTILITIES AT SITE. COORDINATE THE WORKS WITH THE SEWER LINE EFFLUENT DISPOSAL POINT AND WATER LINE SERVICE CONNECTING POINT.
- ALL PIPE SIZES ARE IN MILLIMETERS AND ALL DIMENSIONS ARE IN METERS UNLESS OTHERWISE SPECIFIED.
- THE PROPOSED UTILITIES SHALL BE MADE TO CONFORM TO THE ACTUAL LOCATION, TAPPING POINT, DEPTH AND INVERT LEVELS OF ALL EXISTING PIPES AND STRUCTURES AS VERIFIED BY THE CONTRACTOR.
- ALL PIPE DIAMETER INDICATED ON PLANS ARE NOMINAL PIPE SIZES.
- VENT AND WASTE STACK TO CONNECT TO SOIL PIPE. SOIL PIPE STACK AS MAIN SOIL AND WASTE VENT THRU ROOF.

LEGEND:

WATER DISTRIBUTION SYSTEM	
—	CW COLD WATER LINE
—	HW HOT WATER LINE
—	CW/UP COLD WATER RISER/UPWATER
—	SW/UP SATE VALVE / DRAIN VALVE / ISOLATION VALVE
—	CV CHECK VALVE
—	HD HOSE BIBS
—	WM WATER METER
WASTE, DRAINAGE, SEWER & VENT SYSTEM	
—	SP SEWER PIPE
—	WP WASTE PIPE
—	VP VENT PIPE
—	RWP RAINWATER PIPE
—	SS/WS/VP SOLID WASTE / WASTE STACK
—	VSTR VENT STACK THRU ROOF
—	FSD/FCD FLOOR/ORGANIC DRAINOUT
—	CD/WD CLEANING / WASTE DRAIN
—	FD FLOOR DRAIN DAILY TRAP
—	FS FLOOR DRAIN DAILY TRAP
—	SD/ST SCUPPER DRAIN TO SEWER OUTLET
—	AD AREA DRAIN (WALL, DOWNPOUT)
—	L-R LEFT TO RIGHT
—	T-B TOP TO BOTTOM
—	US UNDERDRAIN / UNDERLAP
—	AC ABOVE CEILING
—	RWP RAINWATER COLLECTOR PIPE
—	OP / OF OVERFLOW PIPE / OVERFLOW



ELEVATION	
TABLE OF DIMENSIONS	
Ø	Ø
34	40
42	50
48	55
60	65
75	80
90	100
100	125
125	150
150	200
200	250



ELEVATION	
TABLE OF DIMENSIONS	
Ø	Ø
34	40
42	50
48	55
60	65
75	80
90	100
100	125
125	150
150	200
200	250

DETAILS OF PIPE HANGERS

NTS

GROUND FLOOR  
DRAINAGE LAYOUT

SCALE 1:150

0 0.5 1 2 3 4 5

HDh. Makunudhoo Health Center  
Client: Ministry of Health

Project Number: 03/11/2024 - HDH/M  
Date: March 2024  
Architect: Razana Amir  
Engineer: Zuhair Hassan Yusuf  
Drawn by: Razana Amir  
Checked by: Zuhair Hassan Yusuf  
Interior: -



RYAN PRIVATE LIMITED

t: +9603375049 f: +9603370776  
e: info@ryan.com.mv  
w: www.ryan.com.mv  
3rd floor, H. Azam, Ameeremogga, Malé

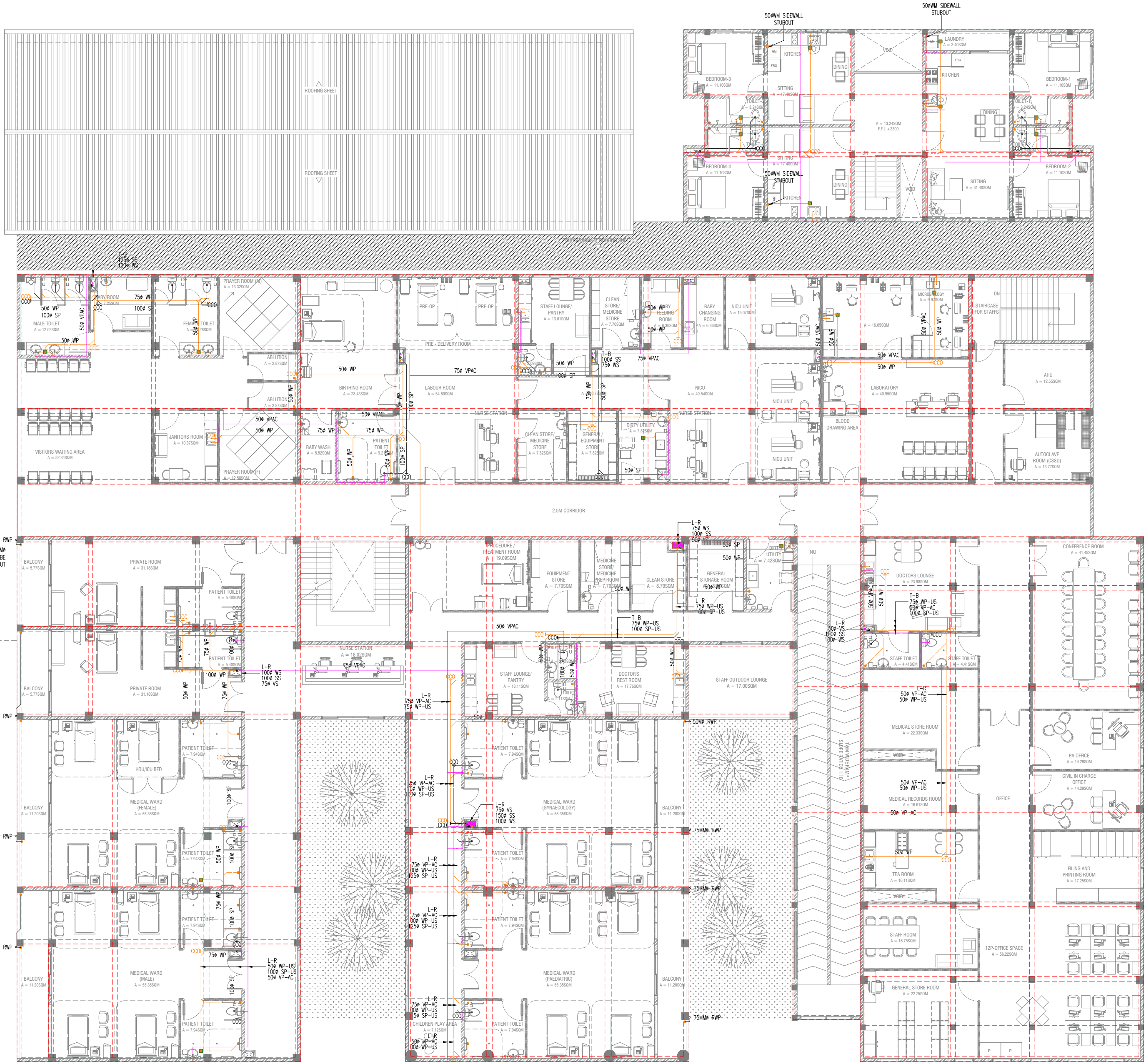
Title: Ground Floor  
Drainage Layout

Page: DR-01/07

The contents of these drawings remain as a property of RYAN Private Limited. Any use other than those expressly stated is a violation of this copyright.



NOTE:  
1. BALCONY DRAIN (75MM FD/SCUPPER) SHALL BE CONNECTED TO DOWNSPOUT SYSTEM.

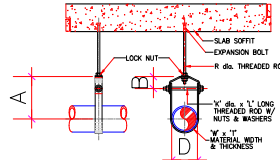


GENERAL NOTES:

- ALL PLUMBING WORKS INCLUDED HEREIN SHALL BE EXECUTED ACCORDING TO THE PROVISIONS OF THE PLUMBING CODE OF THE MALDIVES. IN THE ABSENCE THEREOF, SHALL BE IN ACCORDANCE WITH ACCEPTABLE INTERNATIONAL CODE AND STANDARDS.
- COORDINATE THE DRAWING WITH OTHER RELATED DRAWINGS AND SPECIFICATION. THE ENGINEER SHALL BE NOTIFIED IMMEDIATELY OF ANY DISCREPANCY FOUND THEREIN.
- ALL PIPES SHALL BE INSTALLED AS INDICATED ON PLANS. ANY RELOCATIONS REQUIRED FOR PROPER EXECUTION OF OTHER TRADE SHALL BE WITH PRIOR APPROVAL OF THE ARCHITECT OR ENGINEER.
- PROPOSED SANITARY UTILITIES SHALL CONFORM TO THE ACTUAL LOCATION, DEPTH AND INVERT ELEVATION OF ALL EXISTING PIPES AND STRUCTURES AS VERIFIED BY THE CONTRACTOR.
- ALL SLOPES FOR HORIZONTAL DRAINAGE SHALL MAINTAIN 1% UNLESS OTHERWISE SPECIFIED.
- SIZE OF WATER SUPPLY PIPES TO FIXTURES SHALL BE IN ACCORDANCE WITH THE MANUFACTURER'S INSTRUCTIONS.
- THE CONTRACTOR SHALL VERIFY ALL EXISTING UTILITIES AT SITE. COORDINATE THE WORKS WITH THE SEWER LINE EFFLUENT DISPOSAL POINT AND WATER LINE SERVICE CONNECTING POINT.
- ALL PIPE SIZES ARE IN MILLIMETERS AND ALL DIMENSIONS ARE IN METERS UNLESS OTHERWISE SPECIFIED.
- THE PROPOSED UTILITIES SHALL BE MADE TO CONFORM TO THE ACTUAL LOCATION, TAPPING POINT, DEPTH AND INVERT LEVELS OF ALL EXISTING PIPES AND STRUCTURES AS VERIFIED BY THE CONTRACTOR.
- ALL PIPE DIAMETER INDICATED ON PLANS ARE NOMINAL PIPE SIZES.
- VENT AND WASTE STACK TO CONNECT TO SOIL PIPE. SOIL PIPE STACK AS MAIN SOIL AND WASTE VENT THRU ROOF.

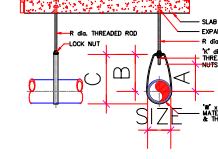
LEGEND:

WATER DISTRIBUTION SYSTEM	
WL	COLD WATER LINE
HWL	HOT WATER LINE
CRW/DRY	COLD WATER RISER/DRAIN
DRYIN	GATE VALVE / DRAIN VALVE / ISOLATION VALVE
CV	CHECK VALVE
HB	HOSE BIB
WM	WATER METER
WASTE, DRAINAGE, SEWER & VENT SYSTEM	
SP	SEWER PIPE
WP	WASTE PIPE
VP	VENT PIPE
RWP	RANWATER PIPE
SD/VS	SEWER/VENT STACK
VS	VENT STACK THRU ROOF
FD/SD	FLOOR/SEWER DRAIN/OUT
CD/WD	CLEANING/ WASTE DRAIN/OUT
FD	FLOOR DRAIN DRAIN TRAP
SD	SEWER DRAIN DRAIN TRAP
SD/VS	SEWER DRAIN TO SEWER OUTLET
SD	SEWER DRAIN (W/ 150MM)
L-R	LEFT TO RIGHT
T-B	TOP TO BOTTOM
W/S	WATER SUPPLY / WASTE/SEWER
AC	ABOVE CEILING
RWP	RANWATER COLLECTOR PIPE
QTY / OF	OVERFLOW PIPE / OVERFLOW



ELEVATION

STANDARD CLEVIS HANGERS			
SIZE	W	H	L
25	40	12	20 x 3
32	40	12	20 x 3
40	50	12	20 x 3
50	50	12	20 x 3
63	50	12	20 x 3
75	63	14	20 x 3
90	75	14	20 x 3
110	90	14	20 x 3
125	110	14	20 x 3
150	125	14	20 x 3
175	150	14	20 x 3
200	175	14	20 x 3



ELEVATION

TRAPEZE HANGERS			
SIZE	W	H	L
25	40	12	20 x 3
32	40	12	20 x 3
40	50	12	20 x 3
50	50	12	20 x 3
63	50	12	20 x 3
75	63	14	20 x 3
90	75	14	20 x 3
110	90	14	20 x 3
125	110	14	20 x 3
150	125	14	20 x 3
175	150	14	20 x 3
200	175	14	20 x 3

DETAILS OF PIPE HANGERS  
NTS

HDh. Makunudhoo Health Center  
Client: Ministry of Health

Rev no	Date
1	2023
2	2023
3	2023
4	2023
5	2023
6	2023
7	2023
8	2023
9	2023
10	2023
11	2023
12	2023
13	2023
14	2023
15	2023
16	2023
17	2023
18	2023
19	2023
20	2023
21	2023
22	2023
23	2023
24	2023
25	2023
26	2023
27	2023
28	2023
29	2023
30	2023
31	2023
32	2023
33	2023
34	2023
35	2023
36	2023
37	2023
38	2023
39	2023
40	2023
41	2023
42	2023
43	2023
44	2023
45	2023
46	2023
47	2023
48	2023
49	2023
50	2023
51	2023
52	2023
53	2023
54	2023
55	2023
56	2023
57	2023
58	2023
59	2023
60	2023
61	2023
62	2023
63	2023
64	2023
65	2023
66	2023
67	2023
68	2023
69	2023
70	2023
71	2023
72	2023
73	2023
74	2023
75	2023
76	2023
77	2023
78	2023
79	2023
80	2023
81	2023
82	2023
83	2023
84	2023
85	2023
86	2023
87	2023
88	2023
89	2023
90	2023
91	2023
92	2023
93	2023
94	2023
95	2023
96	2023
97	2023
98	2023
99	2023
100	2023



RIYAN PRIVATE LIMITED  
t: +9603375049 f: +9603310776  
e: info@riyan.com.mv  
w: www.riyan.com.mv  
3rd floor, H. Azam, Ammanemogaru, Malé

The contents of these drawings remain as a property of Riyan Private Limited. Any use other than those expressly stated is a violation of this copyright.

