

FRONT VIEW

3000  
[10']

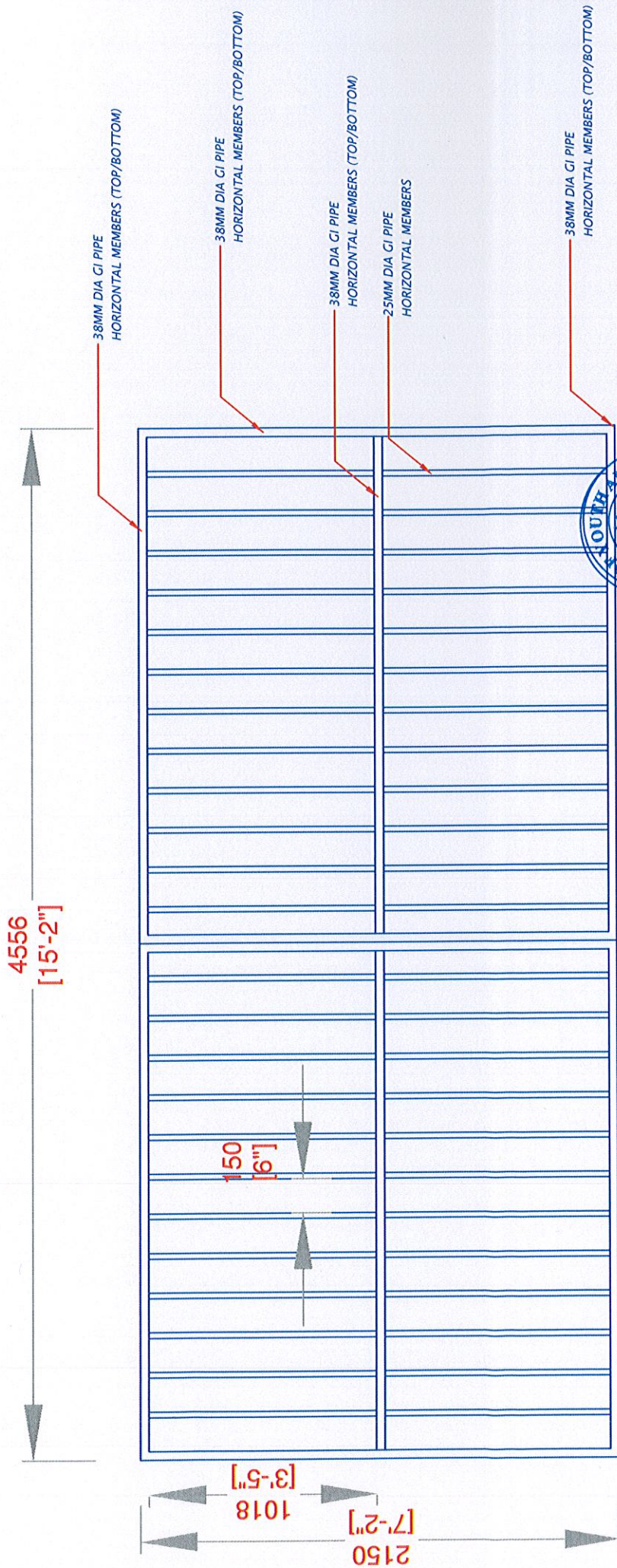
DETAIL-GOAL POST  
Scale - 1:20

SIDE VIEW

2000  
[6'-8"]





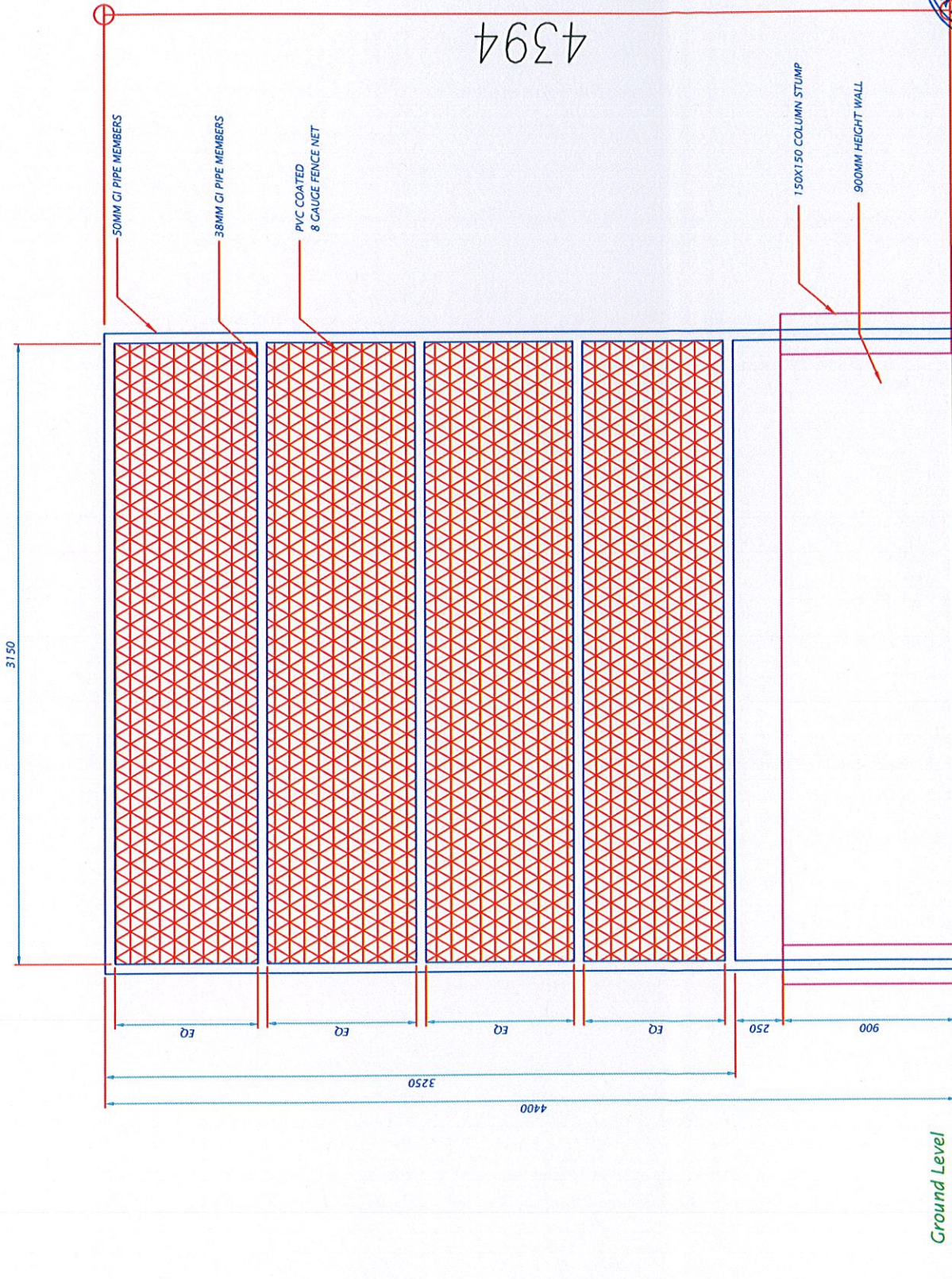


GATE DETAIL  
Scale - 1:25



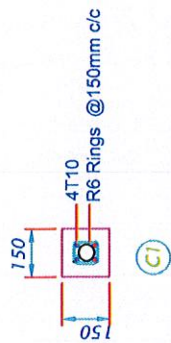


4394



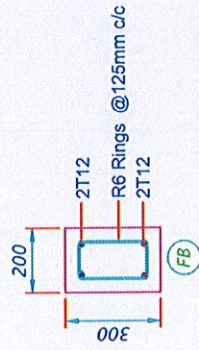
DETAIL-PVC FENCE  
Scale - 1:30





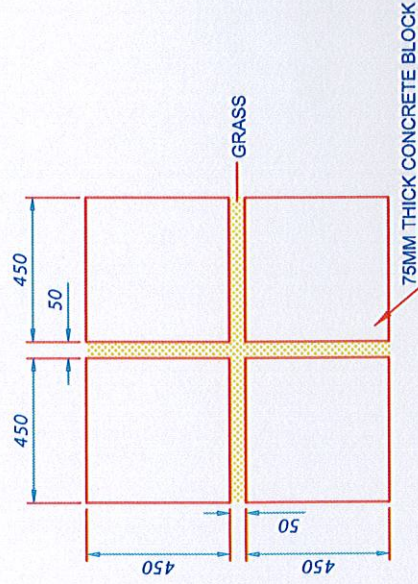
### DETAIL-COLUMNS

Scale - 1:20



### DETAIL-FOUNDATION BEAM

Scale - 1:20

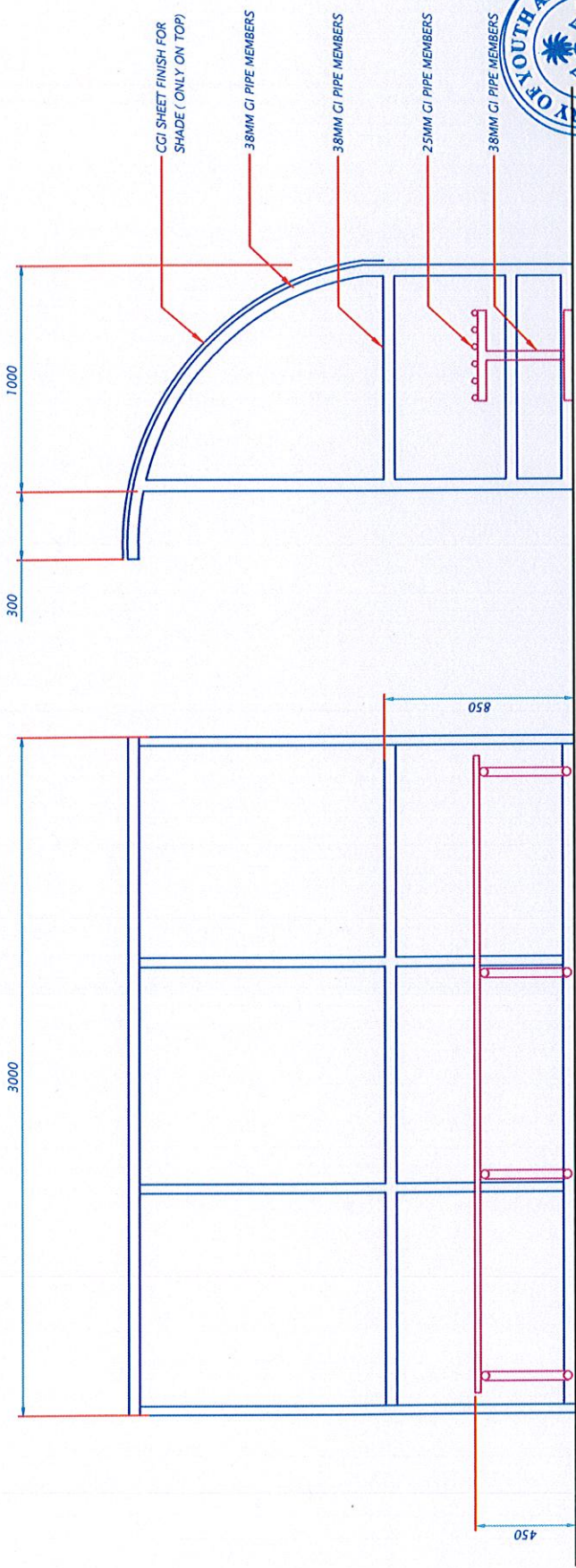


### DETAIL-PAVING BLOCKS

Scale - 1:20

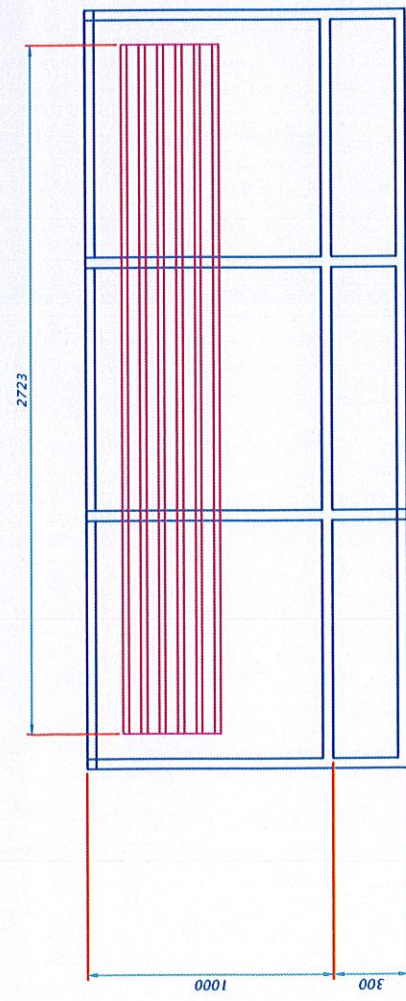






SIDE VIEW

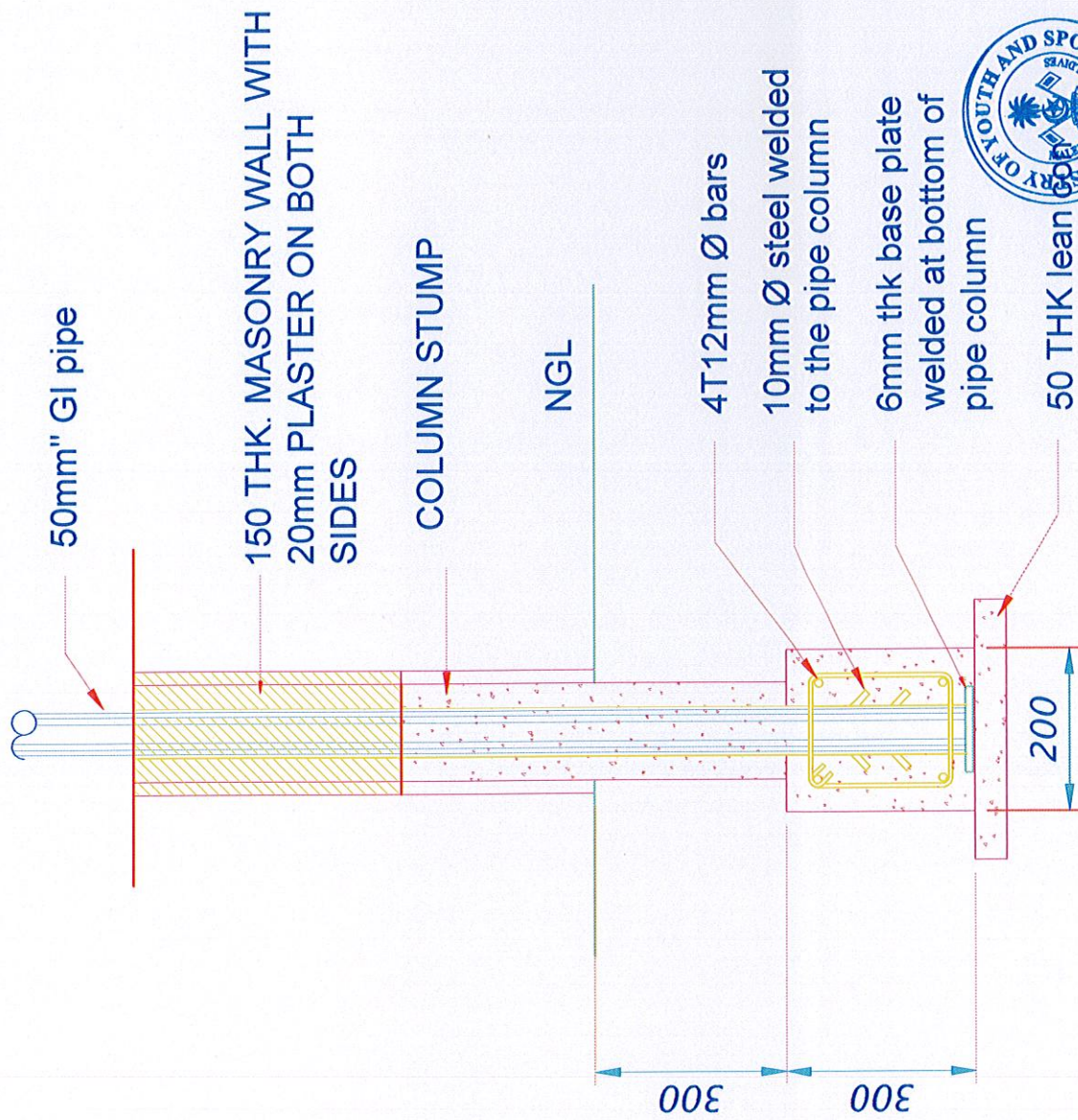
FRONT VIEW



TOP VIEW

DETAIL-GI BENCH  
Scale - 1:30

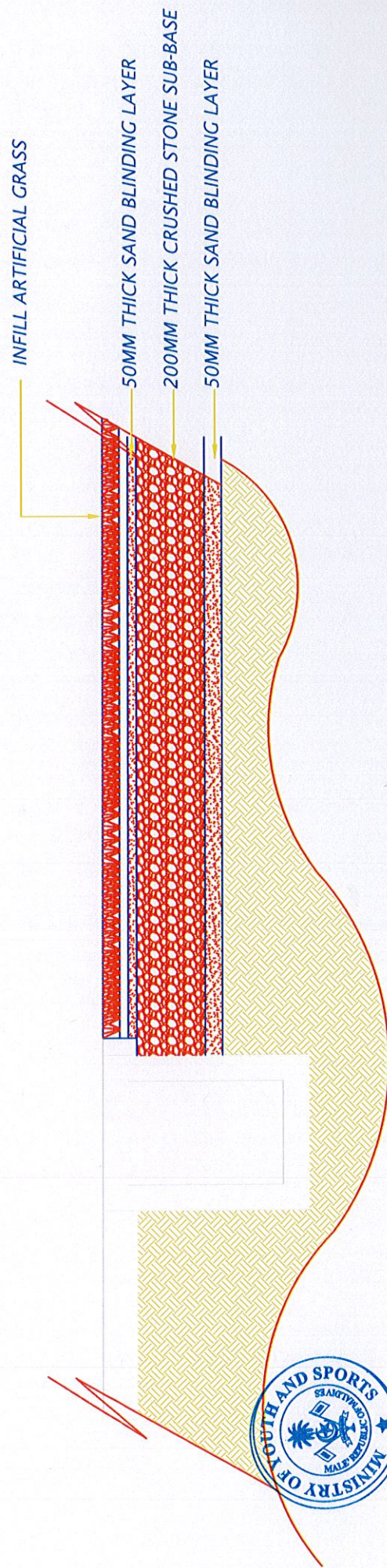




## DETAIL- COLUMN STUMP

Scale - 1:20





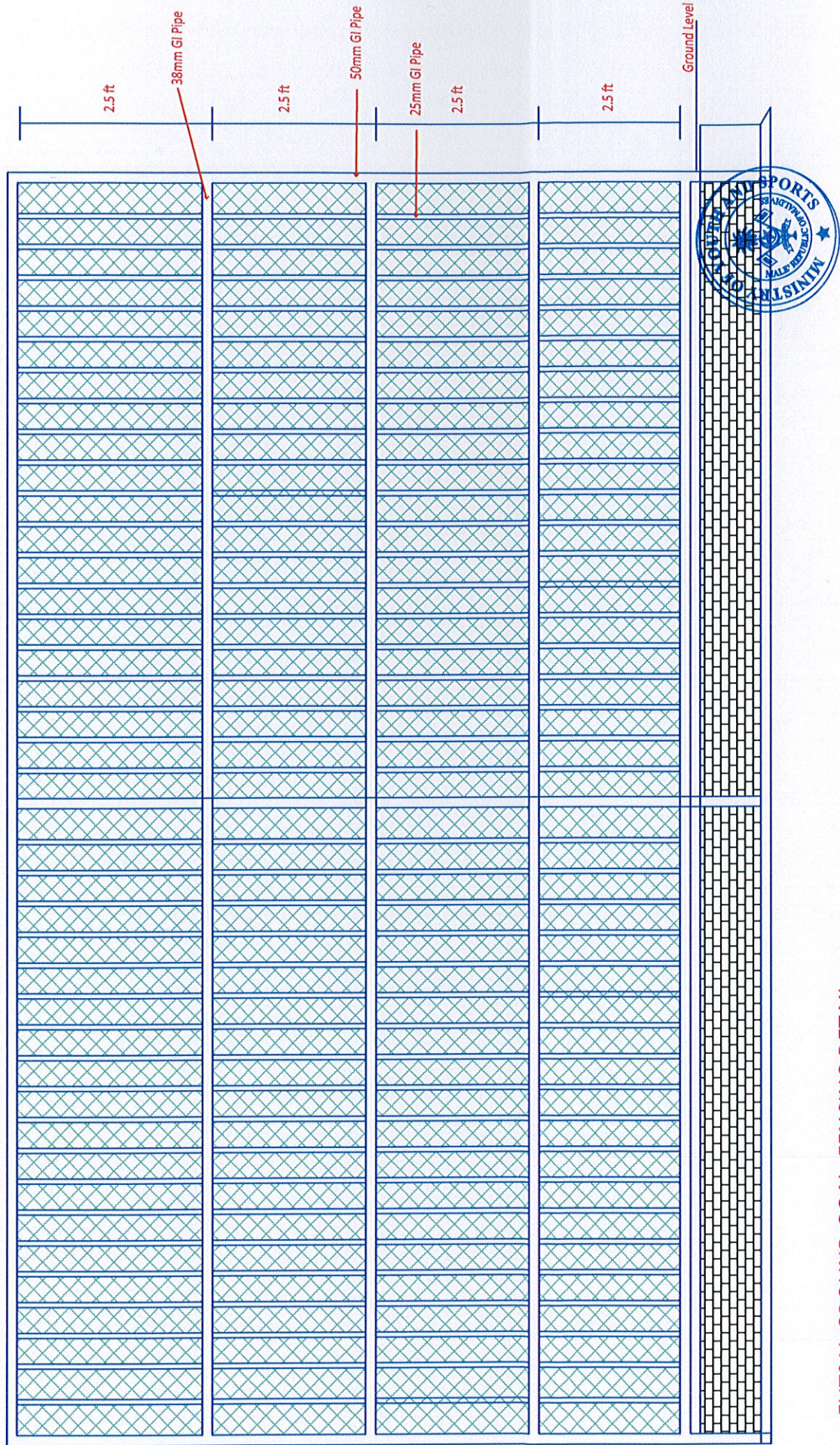
## DETAILS- OUTDOOR PITCH

Scale 1:20





6196 [20'-4"]



FUTSAL GROUND GOAL FENCING DETAIL

SCALE 1:25