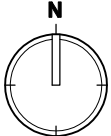


AGU

BANDARA MAGU



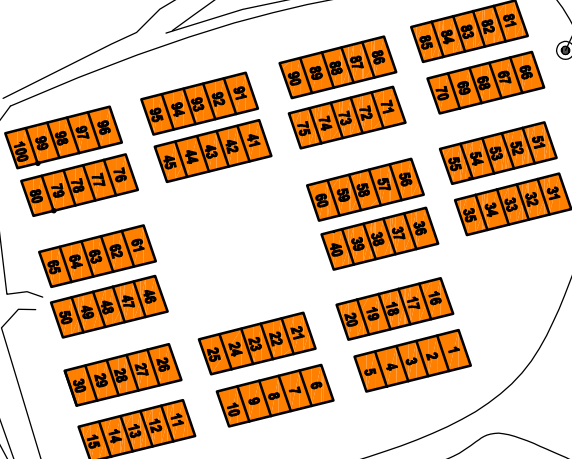
100 HOUSING UNITS


KULHUDHUFFUSHI
REGIONAL HOSPITAL

HARBOUR

STO HARBOUR

ANNEX - 1A



<div></div> <div>MINISTRY OF HOUSING AND URBAN DEVELOPMENT</div>			AMENDMENTS:		PROJECT:	DESIGN:	ENGINEER:
REV #	DATE	DESCRIPTION	REMEDIAL WORKS AND COMPLETION OF 105 HOUSING UNITS		DRAWING TITLE:	DRAFTING:	APPROVED BY:
					HHH, KULHUDHUFFUSHI LOCATION PLAN- SITE A	DATE: 25 JAN 2020	DRAWING NO. A-02
						SCALE: 1:5000	