

---

MINISTRY OF FISHERIES & AGRICULTURE

---

---

AQUA CULTURE, AGRICULTURE & FISHERIES  
DEVELOPMENT PROJECT

---

---

GA MATU ISLAND

---

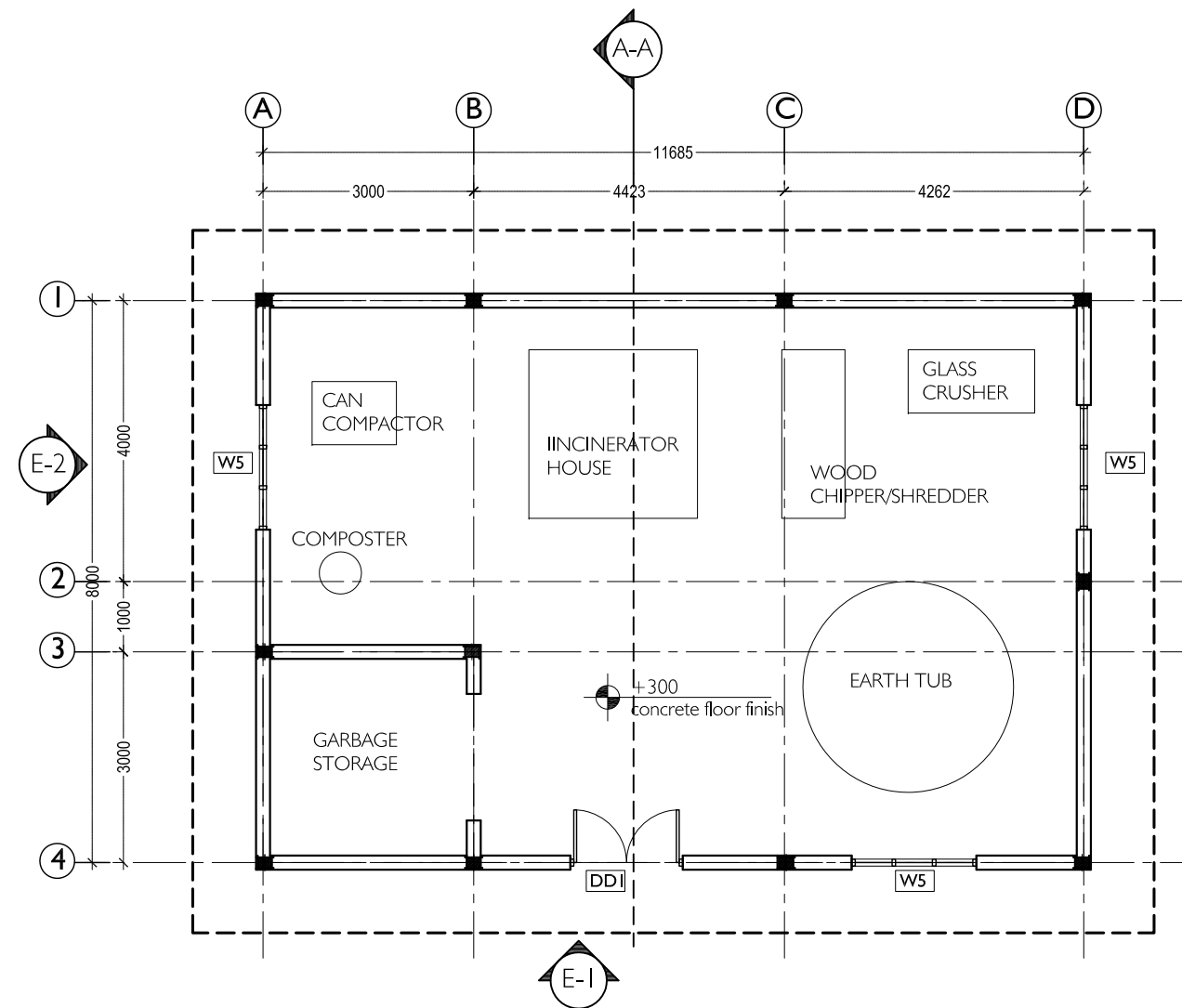
---

WASTE DISPOSAL / INCINERATOR - BUILDING

---

NOVEA ENGINEERING

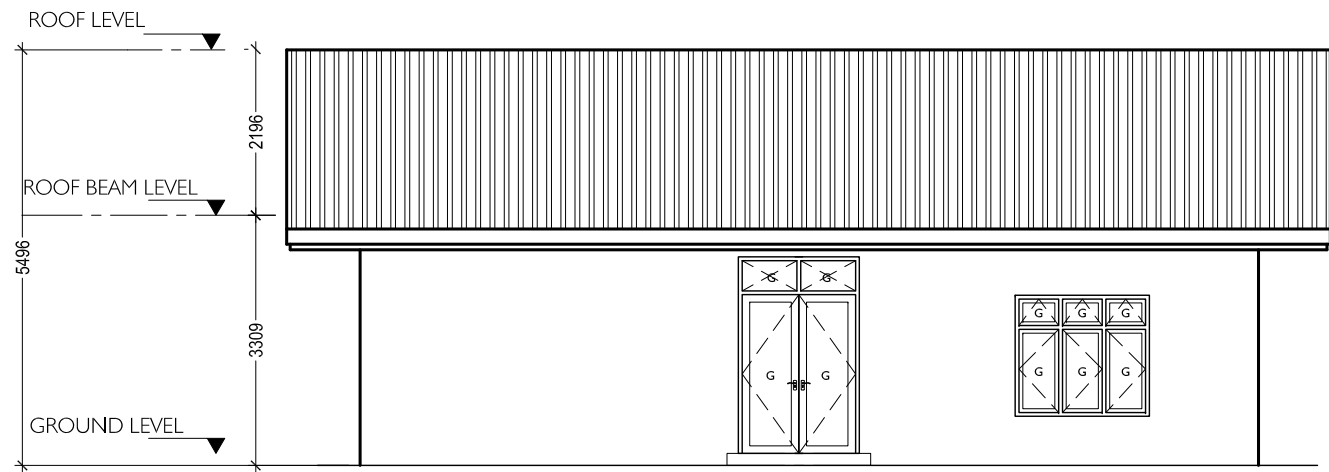
PO Box 3013  
Male  
Maldives  
m : +9609999413



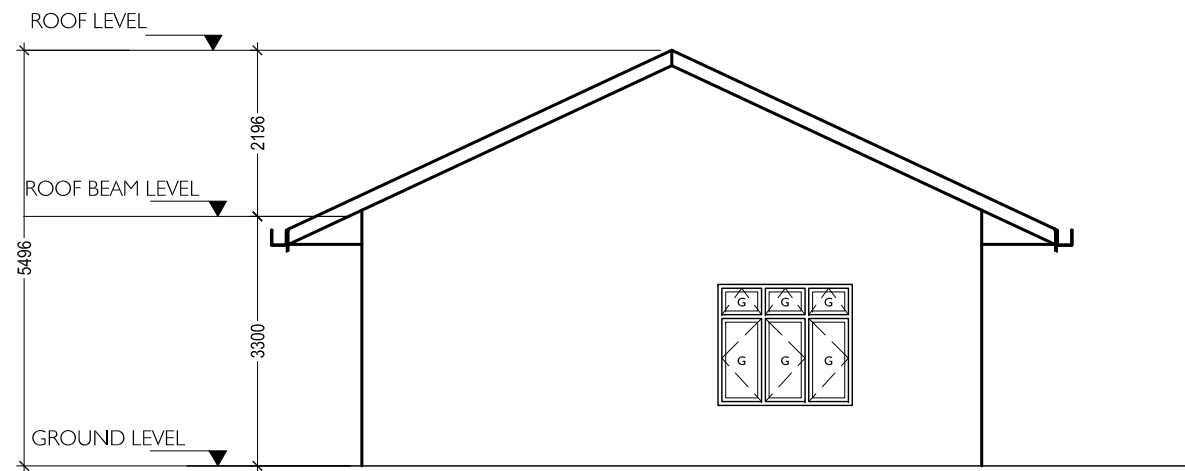
**PLAN** 1:100

<div>NOVEA ENGINEERING</div> <div>PO Box 3013</div> <div>Male</div> <div>Maldives</div> <div>m : +9609999413</div>	<div></div> <div>CLIENT :</div> <div>MINISTRY OF FISHERIES &amp; AGRICULTURE</div>	PROJECT : GA MATU DEVELOPMENT			REVISIONS		DRAWING TITLE:	
		BUILDING UNIT: WASTE DISPOSAL / INCINERATOR BUILDING - N		1			01 - PLAN	
				2				

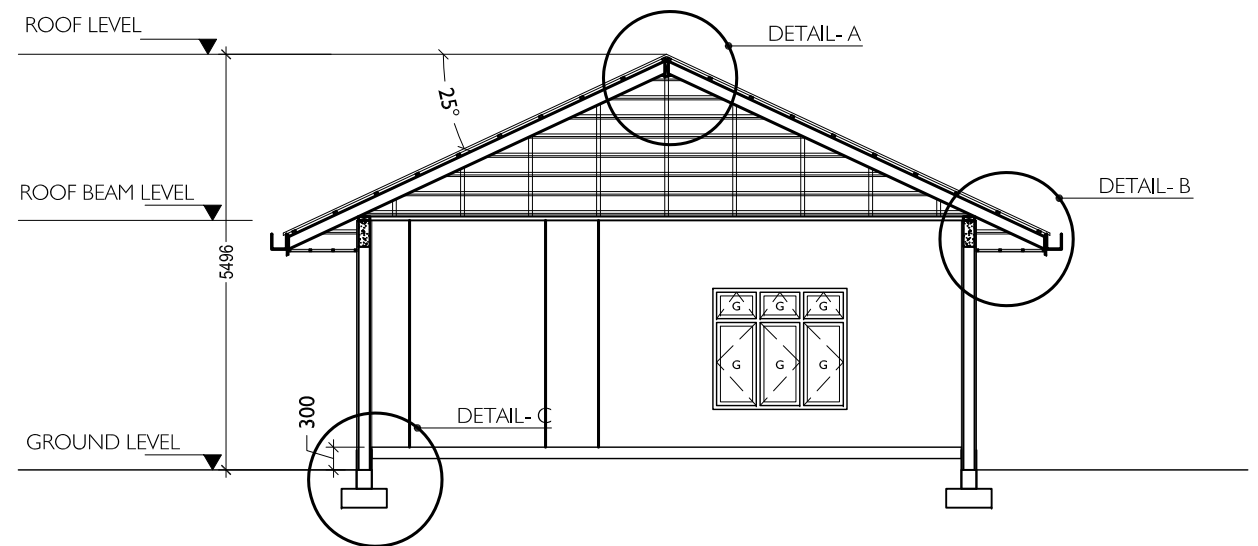
NOTE: ALL DESIGNS ABOVE ARE PROTECTED BY COPYRIGHT. NO PART SHOULD BE REPRODUCED (PHOTOCOPIED OR ANY OTHER MEANS) WITHOUT PERMISSION .



ELEVATION I 1:100



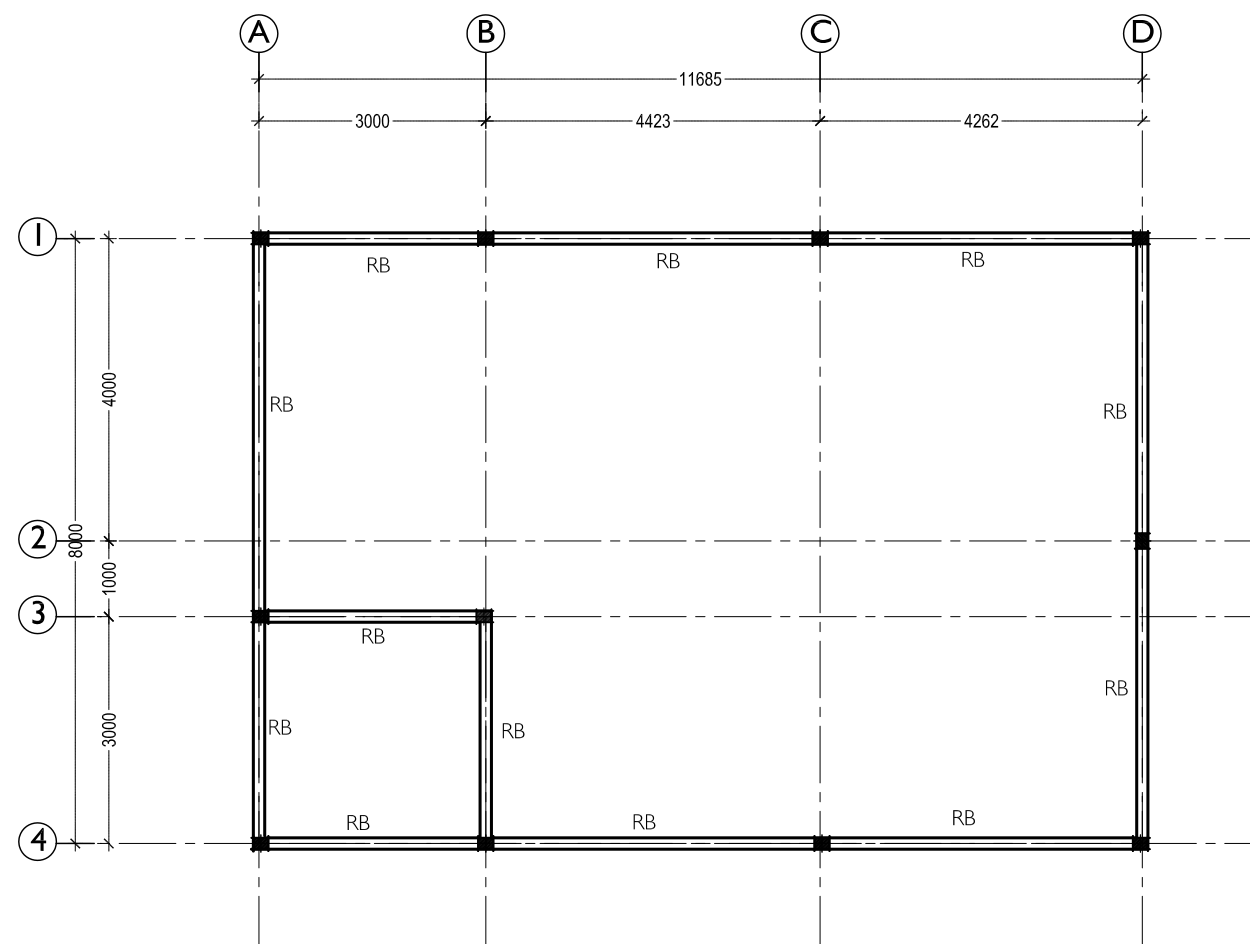
ELEVATION 2 1:100



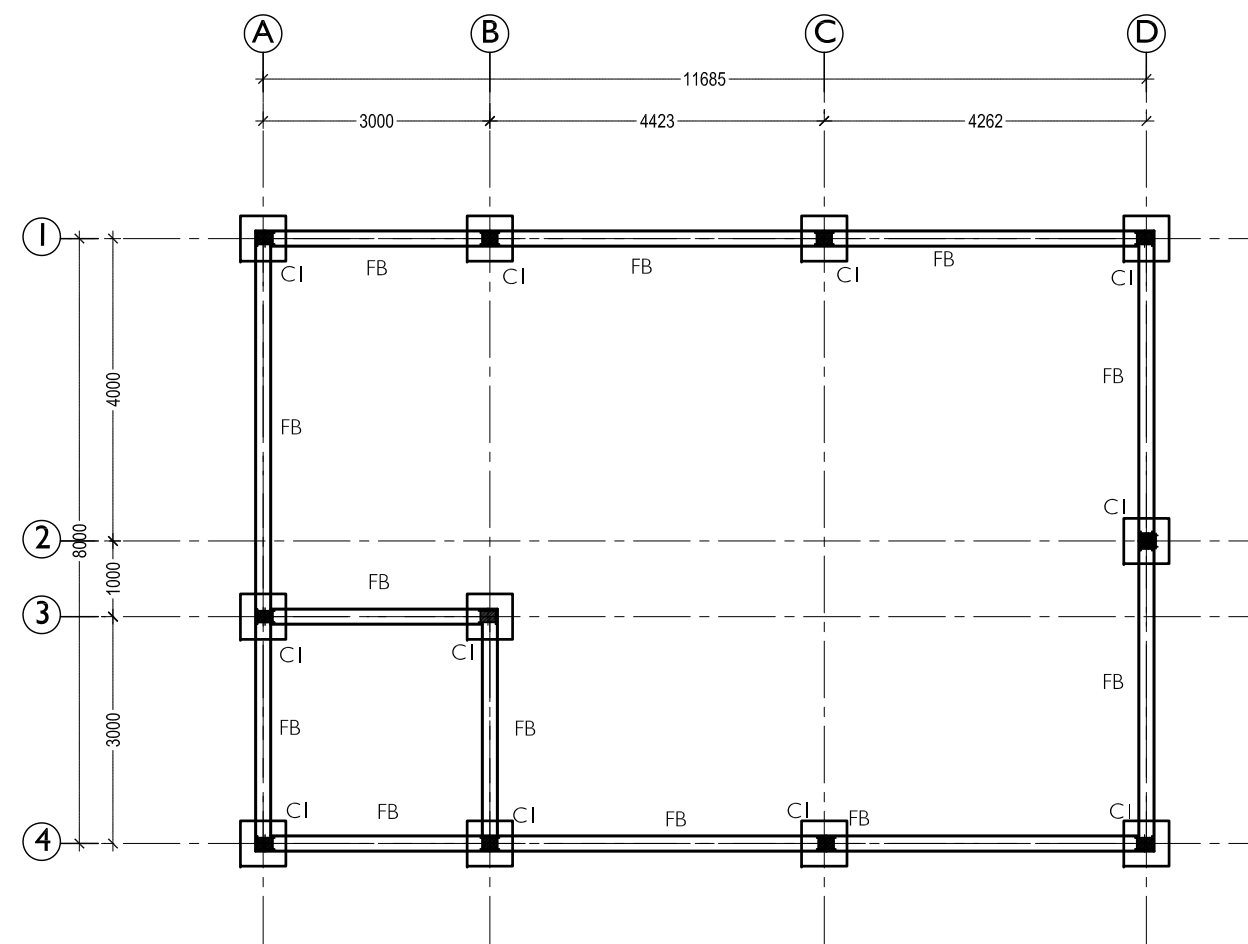
SECTION A-A 1:100

<div>NOVEA ENGINEERING</div> <div>PO Box 3013</div> <div>Male</div> <div>Maldives</div> <div>m : +9609999413</div>	<div></div> <div>CLIENT :</div> <div>MINISTRY OF FISHERIES &amp; AGRICULTURE</div>	PROJECT :	GA MATU DEVELOPMENT			REVISIONS		DRAWING TITLE:		02 - ELEVATION & SECTION	
		BUILDING UNIT:	WASTE DISPOSAL / INCINERATOR BUILDING - N		1			SCALE :	1:100	DATE :	31 July 2017
				2							


NOTE: ALL DESIGNS ABOVE ARE PROTECTED BY COPYRIGHT. NO PART SHOULD BE REPRODUCED (PHOTOCOPIED OR ANY OTHER MEANS) WITHOUT PERMISSION .



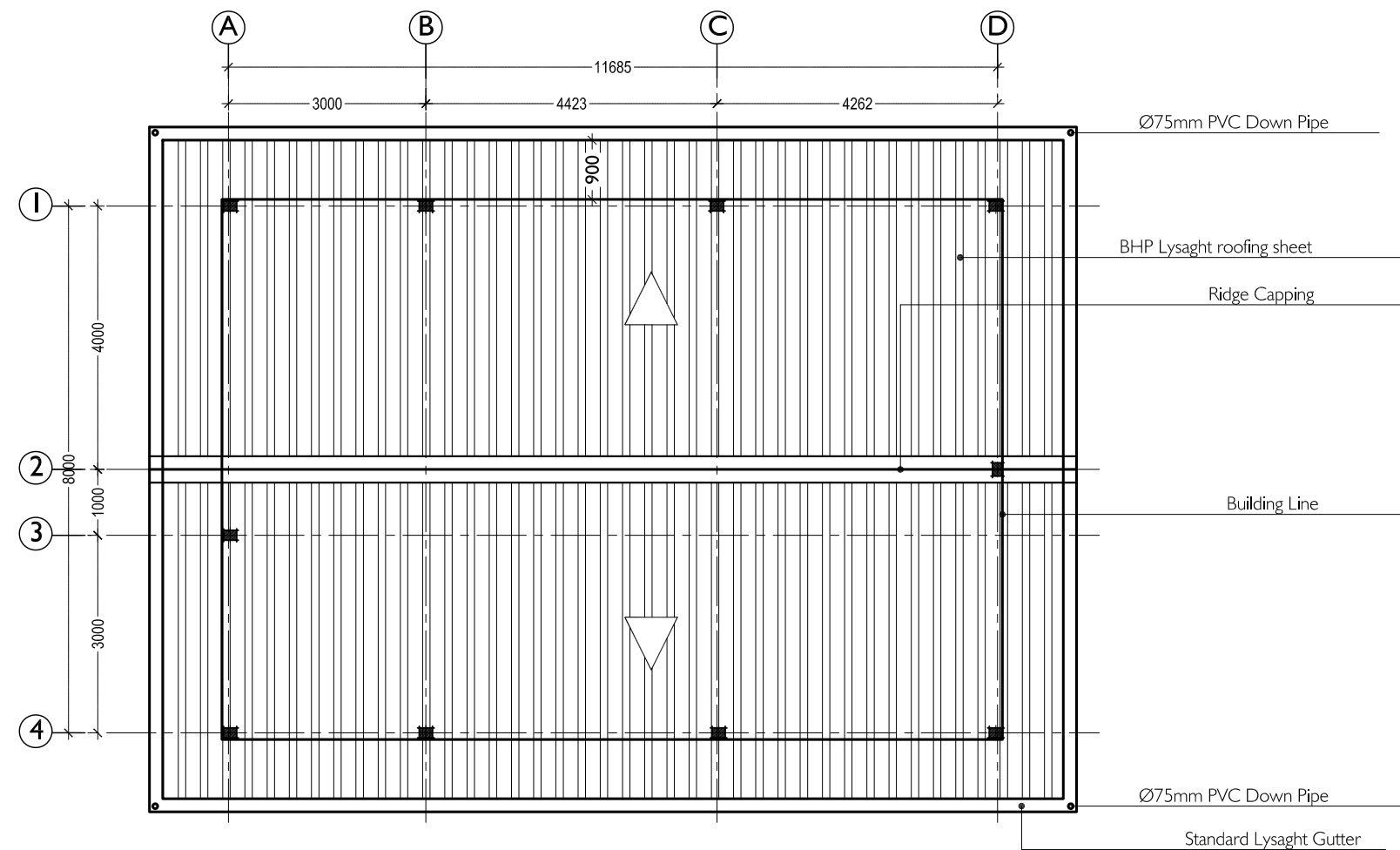
**ROOF BEAM PLAN** 1:100



**FOUNDATION LAYOUT** 1:100

NOVEA ENGINEERING PO Box 3013 Male Maldives m : +9609999413	 CLIENT :  MINISTRY OF FISHERIES & AGRICULTURE	PROJECT :  GA MATU DEVELOPMENT		REVISIONS		DRAWING TITLE: 03 - ROOF BEAMS & FOUNDATION	
		BUILDING UNIT:  WASTE DISPOSAL / INCINERATOR BUILDING - N	1			SCALE : 1:100	DATE : 31 July 2017
			2				

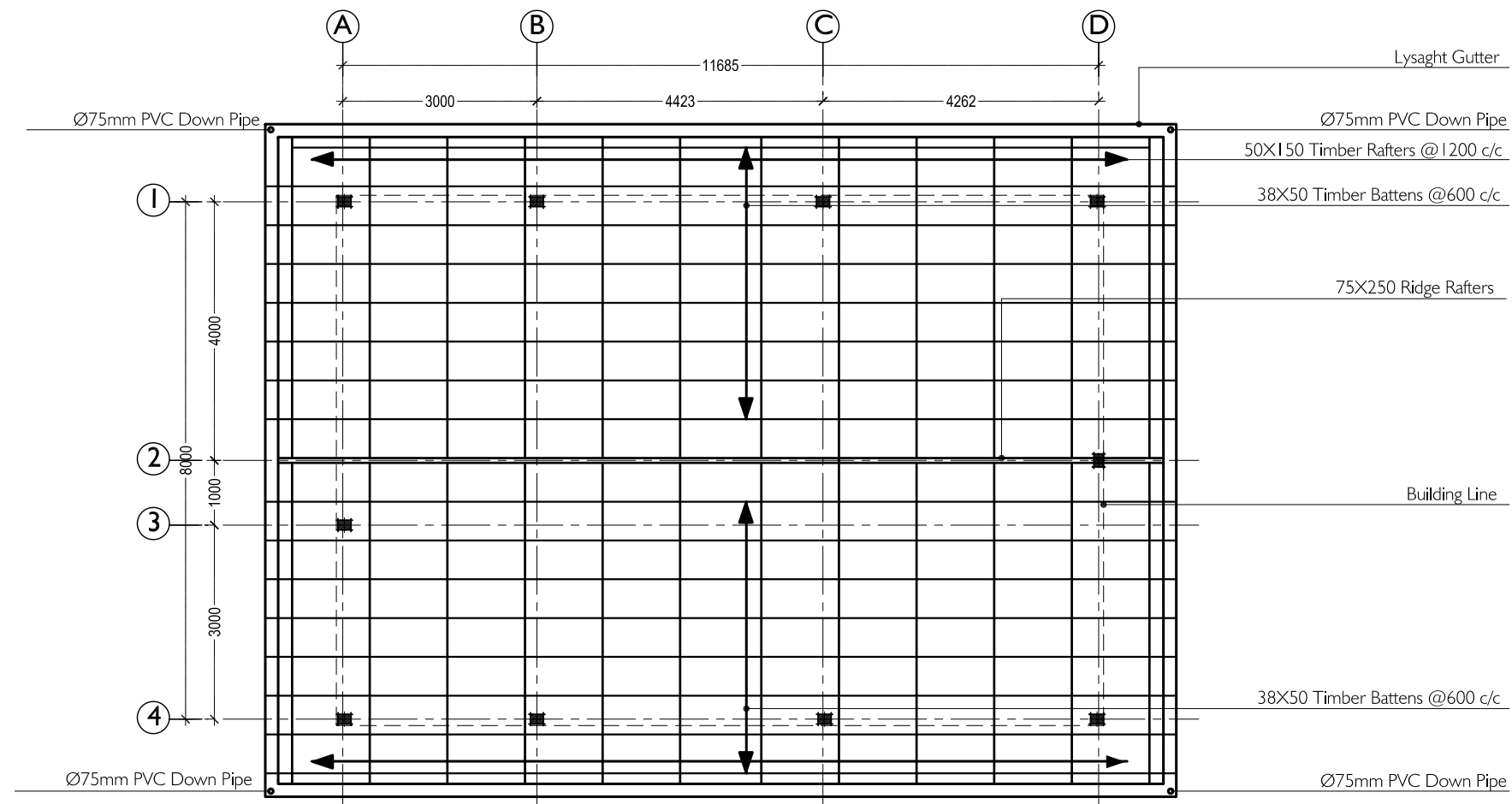
NOTE: ALL DESIGNS ABOVE ARE PROTECTED BY COPYRIGHT. NO PART SHOULD BE REPRODUCED (PHOTOCOPIED OR ANY OTHER MEANS) WITHOUT PERMISSION .



**ROOF PLAN** 1:100

<div>NOVEA ENGINEERING</div> <div>PO Box 3013</div> <div>Male</div> <div>Maldives</div> <div>m : +9609999413</div>	<div></div> <div>CLIENT :</div> <div>MINISTRY OF FISHERIES &amp; AGRICULTURE</div>	<div>PROJECT :</div> <div>GA MATU DEVELOPMENT</div>		<div>REVISIONS</div>		<div>DRAWING TITLE:</div> <div>04 - ROOF PLAN</div>	
		<div>BUILDING UNIT:</div> <div>WASTE DISPOSAL / INCINERATOR BUILDING - N</div>	1			<div>SCALE :</div> <div>1:100</div>	<div>DATE :</div> <div>31 July 2017</div>
			2				

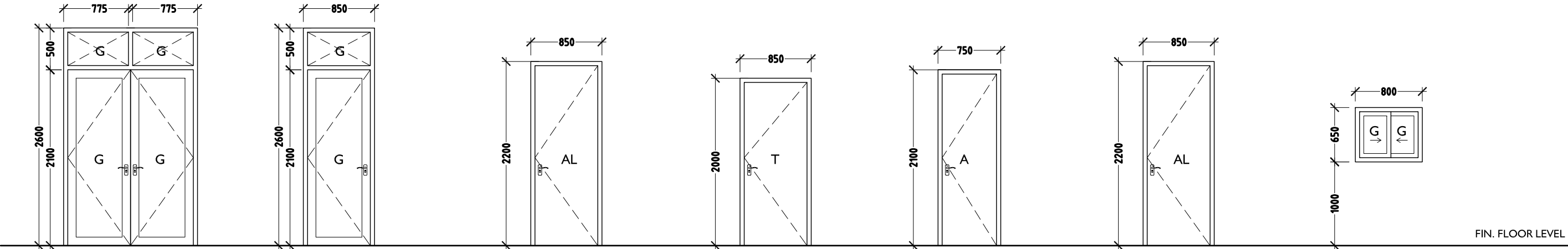
NOTE: ALL DESIGNS ABOVE ARE PROTECTED BY COPYRIGHT. NO PART SHOULD BE REPRODUCED (PHOTOCOPIED OR ANY OTHER MEANS) WITHOUT PERMISSION .



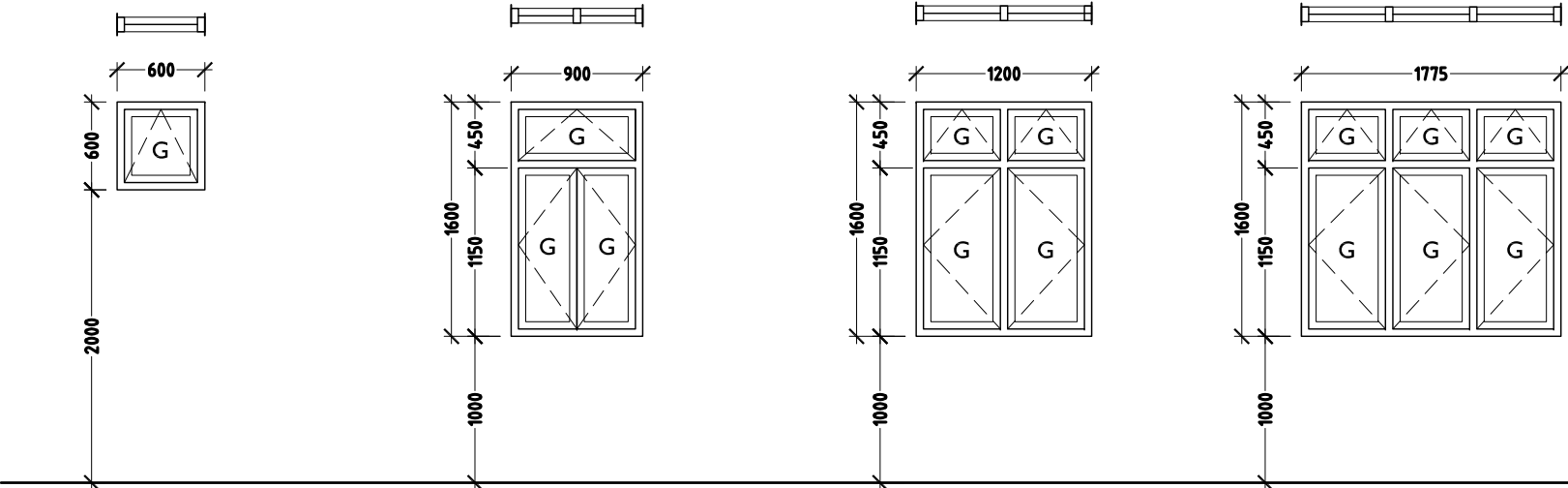
**ROOF FRAMING LAYOUT** 1:100

<div>NOVEA ENGINEERING</div> <div>PO Box 3013</div> <div>Male</div> <div>Maldives</div> <div>m : +9609999413</div>	<div></div> <div>CLIENT :</div> <div>MINISTRY OF FISHERIES &amp; AGRICULTURE</div>	PROJECT :	GA MATU DEVELOPMENT			REVISIONS		DRAWING TITLE:		
		BUILDING UNIT:	WASTE DISPOSAL / INCINERATOR BUILDING - N	1			05 - ROOF FRAMING PLAN			
				2			SCALE :	1:100	DATE :	31 July 2017

NOTE: ALL DESIGNS ABOVE ARE PROTECTED BY COPYRIGHT. NO PART SHOULD BE REPRODUCED (PHOTOCOPIED OR ANY OTHER MEANS) WITHOUT PERMISSION .



<b>DD1</b>	OPEN AREA: 3.73 SQ M TYPE: DOUBLE LEAF DOOR FRAME: ALUMINIUM SASH: 10MM FRAME LESS TEMPERED GLASS	<b>D1</b>	OPEN AREA: 1.57 SQM TYPE: SINGLE LEAF DOOR FRAME: ALUMINIUM SASH: 10MM FRAMELESS TEMPERED GLASS	<b>D2</b>	OPEN AREA: 1.61 SQM TYPE: SINGLE LEAF DOOR FRAME: ALUMINIUM SASH: 10MM FRAMELESS TEMPERED GLASS	<b>D3</b>	OPEN AREA: 1.46 SQM QTY: SINGLE LEAF DOOR FRAME: TIMBER SASH: TIMBER	<b>D3</b>	OPEN AREA: 1.33 SQM TYPE: SINGLE LEAF DOOR FRAME: ALUMINIUM SASH: 10MM FRAMELESS TEMPERED	<b>D4</b>	OPEN AREA: 1.61 SQM QTY: SINGLE LEAF DOOR FRAME: ALUMINIUM SASH: 10MM FRAMELESS TEMPERED GLASS	<b>W1</b>	OPEN AREA: 0.17 SQM TYPE: SLIDING WINDOW FRAME: ALUMINIUM SASH: 10MM FRAMELESS TEMPERED GLASS
------------	--	-----------	--	-----------	--	-----------	---	-----------	--	-----------	---	-----------	--



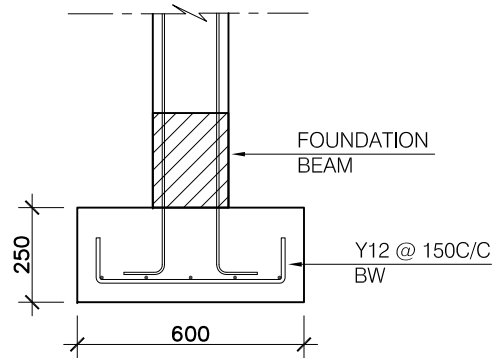
- ALL DOORS/WINDOWS ARE ALUMINIUM (WHITE COLOUR POWDER COATED ALUMINIUM) UNLESS OTHERWISE STATED
- ALL DIMENSIONS TO BE CHECKED ON SITE PRIOR TO FABRICATION
- ALL DOOR/WINDOWS VIEWED FROM EXTERIOR
- FOR THE DOOR SWING REFER TO FLOOR PLANS
- G - 6MM THK CLEAR GLASS
- T - TIMBER
- FGL - FIXED GLASS LOUVERS
- PV - PVC

<b>W2</b>	OPEN AREA: 0.25 SQM TYPE: TOP HUNG WINDOW FRAME: ALUMINIUM SASH: 10MM FRAMELESS TEMPERED GLASS	<b>W3</b>	OPEN AREA: 1.16 SQM TYPE: SIDE SWING WINDOW FRAME: ALUMINIUM SASH: 10MM FRAMELESS TEMPERED GLASS	<b>W4</b>	OPEN AREA: 1.52 SQM TYPE: SIDE SWING WINDOW FRAME: ALUMINIUM SASH: 10MM FRAMELESS TEMPERED GLASS	<b>W5</b>	OPEN AREA: 1.83 SQM TYPE: SIDE SWING WINDOW FRAME: ALUMINIUM SASH: 10MM FRAMELESS TEMPERED GLASS
-----------	---	-----------	---	-----------	---	-----------	---

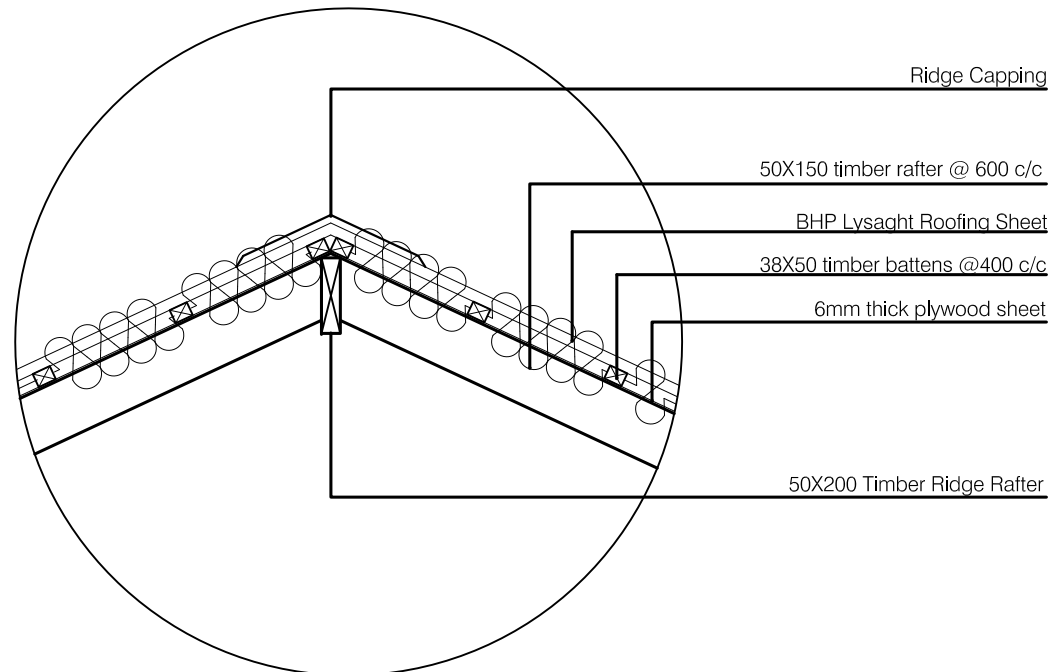
DOOR WINDOW DETAILS-I 1:50

<div>NOVEA ENGINEERING</div> <div>PO Box 3013</div> <div>Male</div> <div>Maldives</div> <div>m : +9609999413</div>	<div></div> <div>CLIENT :</div> <div>MINISTRY OF FISHERIES &amp; AGRICULTURE</div>	PROJECT :	GA MATU DEVELOPMENT			REVISIONS		DRAWING TITLE:	
		BUILDING UNIT:	WASTE DISPOSAL / INCINERATOR BUILDING - N		1			06 - DOORS & WINDOWS	
					2				
							SCALE :	1:50	DATE : 31 July 2017

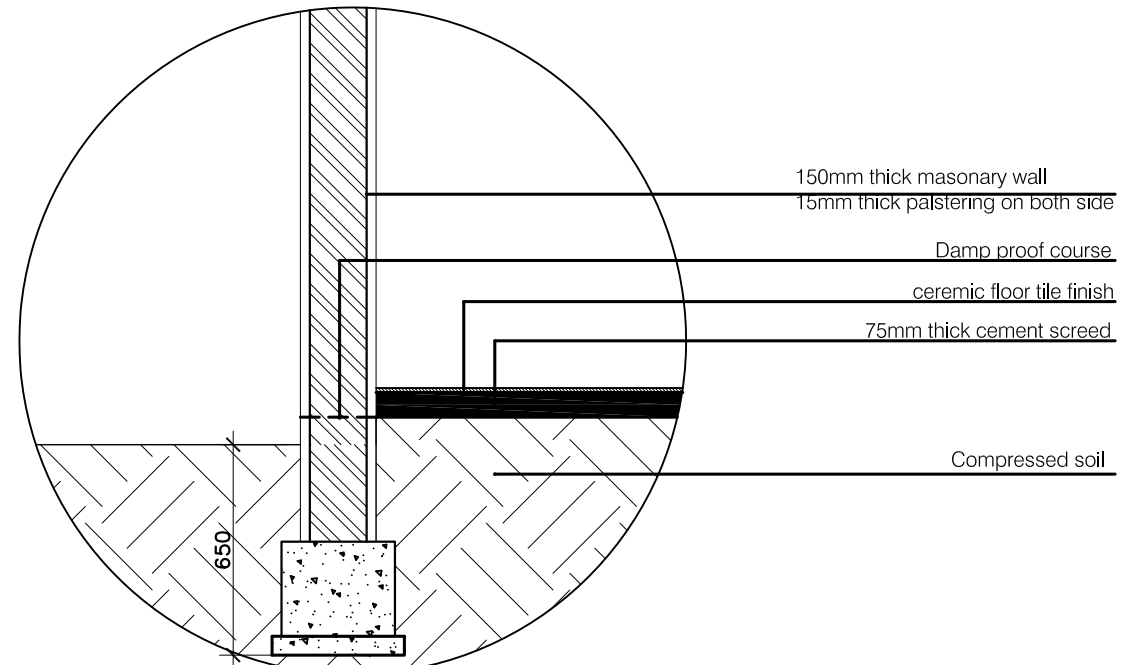
NOTE: ALL DESIGNS ABOVE ARE PROTECTED BY COPYRIGHT. NO PART SHOULD BE REPRODUCED (PHOTOCOPIED OR ANY OTHER MEANS) WITHOUT PERMISSION .



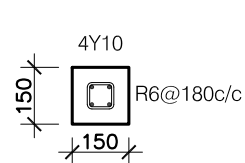
**FOUNDATION PAD 'F1' DETAIL**  
SCALE 1:20



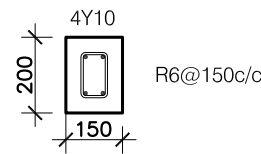
**DETAIL - A**  
SCALE 1:20



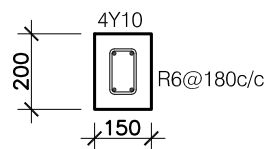
**DETAIL - C**  
SCALE 1:20



**LINTEL BEAM 'LB1'**  
SCALE 1:20

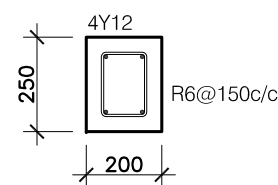


**RC ROOF BEAM 'RB'**  
SCALE 1:20

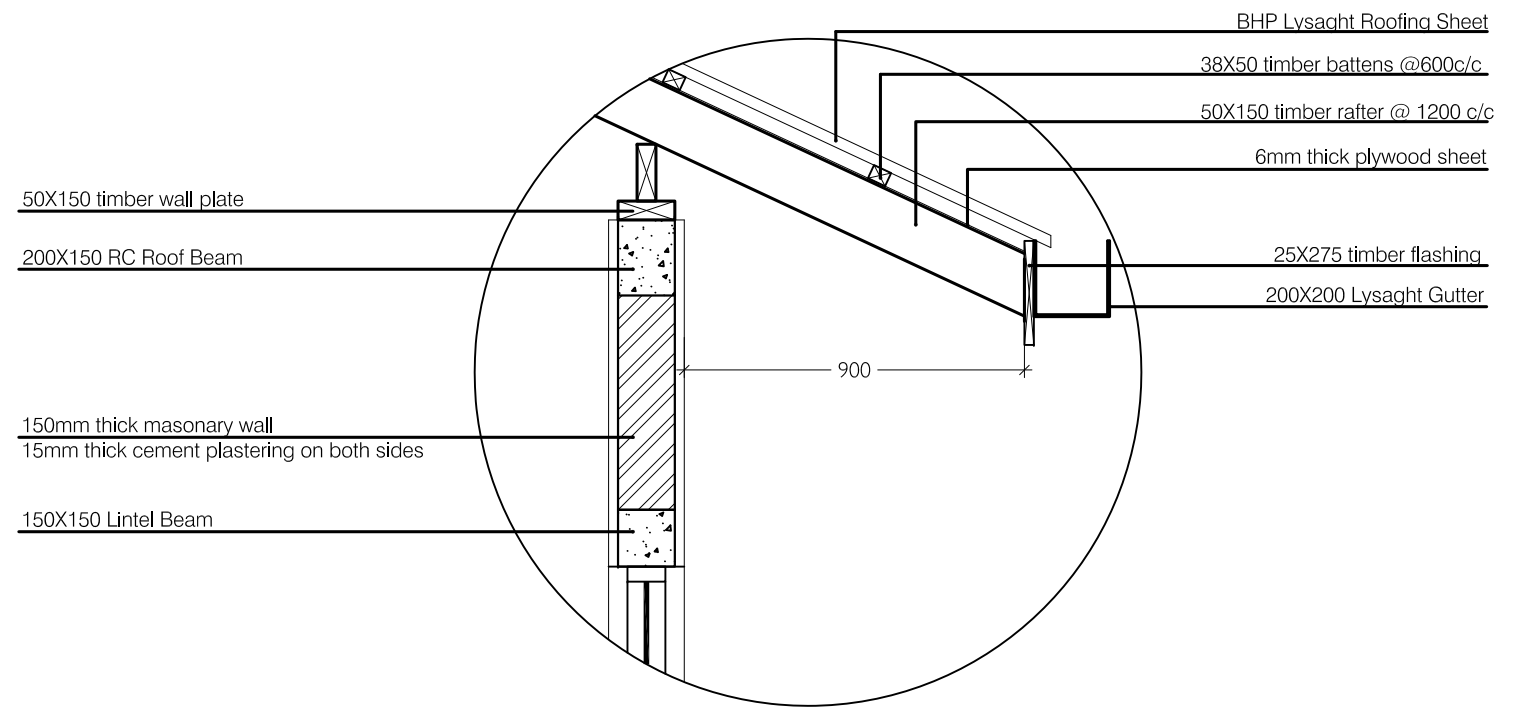


**COLUMN 'C1' DETAIL**  
SCALE 1:20

NOTE: All columns cast monolithically  
with masonry wall



**FOUNDATION BEAM 'FB'**  
SCALE 1:20



**DETAIL - B**  
SCALE 1:20

**NOVEA ENGINEERING**  
PO Box 3013  
Male  
Maldives  
m : +9609999413



CLIENT :  
**MINISTRY OF FISHERIES & AGRICULTURE**

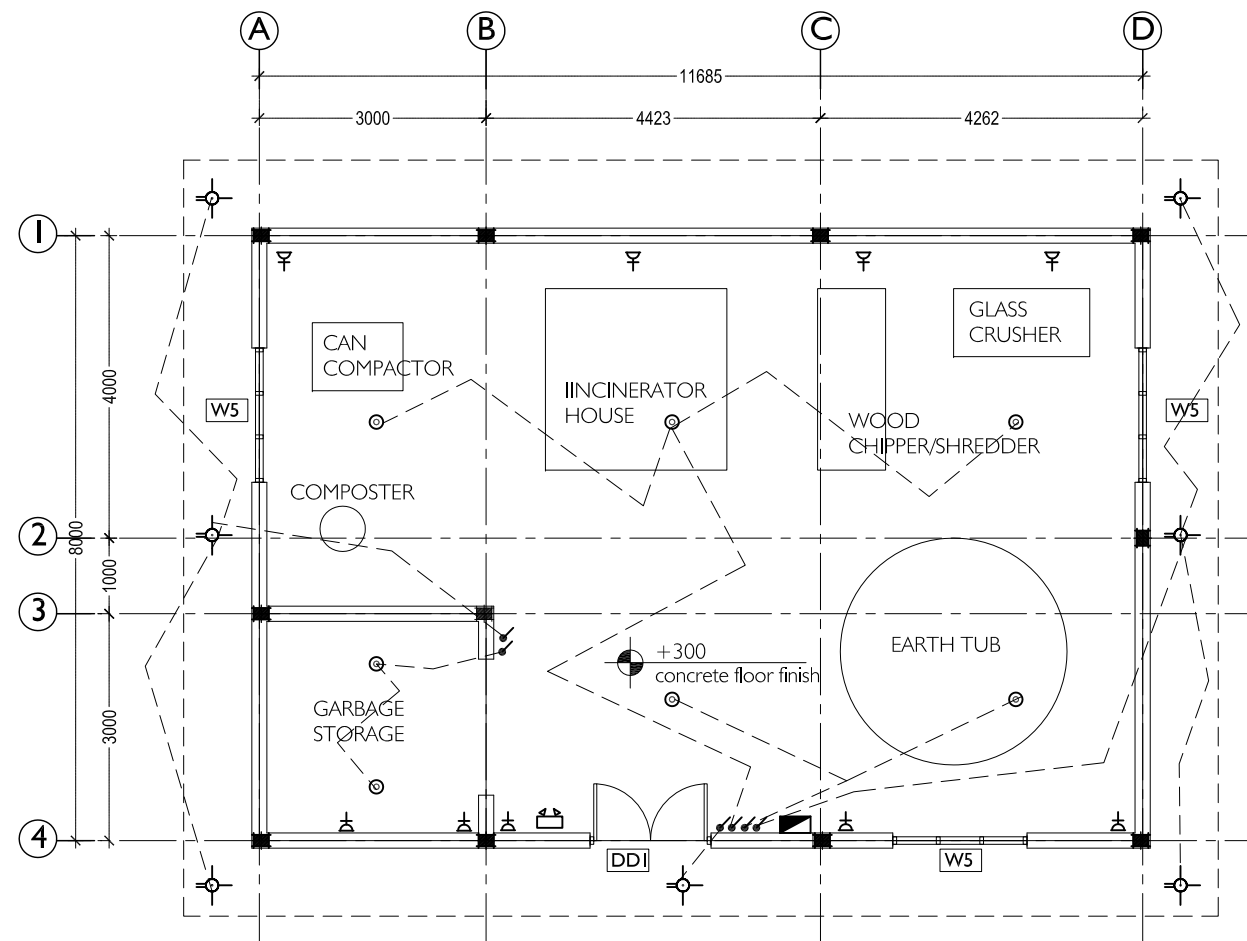
PROJECT : **GA MATU DEVELOPMENT**  
BUILDING UNIT:  
WASTE DISPOSAL / INCINERATOR BUILDING - N

REVISIONS		
1		
2		

DRAWING TITLE:  
**07 - STRUCTURAL DETAILS**  
SCALE : 1:20  
DATE : 31 July 2017

NOTE: ALL DESIGNS ABOVE ARE PROTECTED BY COPYRIGHT. NO PART SHOULD BE REPRODUCED (PHOTOCOPIED OR ANY OTHER MEANS) WITHOUT PERMISSION .





LEGEND	
	CEILING MOUNT LIGHT
	WEATHER PROOF CEILING MOUNT LIGHT
	1x4' WALL MOUNT TUBE LIGHT WITH PRESMATIC COVER
	1x2' WALL MOUNT TUBE LIGHT WITH PRESMATIC COVER
	WALL MOUNT DECORATIVE LIGHT
	WEATHER PROOF WALL MOUNT LIGHT
	5W WALL MOUNT LIGHT
	4W WALL MOUNT READING LIGHT
	CIRCULAR 20W ENERGY SAVING LIGHT
	DOOR BELL
	EMERGENCY LIGHT, 2 HRS NON MAINTAINED
	1x13A SOCKET OUTLET (WALL MOUNTED)
	2x13A SOCKET OUTLET (WALL MOUNTED)
	1x15A SOCKET OUTLET (WALL MOUNTED)
	WATER PROOF 1x13A SOCKET OUTLET (WALL MOUNTED)
	TELEPHONE OUTLET
	CABLE TV
	DISTRIBUTION BOARD (SINGLE PHASE)
	TWO WAY SWITCH
	ONE WAY SWITCH
	WATER PROOF ONE WAY SWITCH
	FAN /LIGHT DIMMER TWO WAY SWITCH
	FAN /LIGHT DIMMER SWITCH
	PACKAGE UNIT COMPLETE WITH STARTER AND CONTROL
	AIR HANDLING UNIT
	CEILING FAN
	WALL MOUNT FAN
	EXHAUST FAN

## ELECTRICAL LEGENDS

PLAN 1:100

<div>NOVEA ENGINEERING</div> <div>PO Box 3013</div> <div>Male</div> <div>Maldives</div> <div>m : +9609999413</div>	<div></div> <div>CLIENT :</div> <div>MINISTRY OF FISHERIES &amp; AGRICULTURE</div>	PROJECT :	GA MATU DEVELOPMENT		REVISIONS		DRAWING TITLE:	
		BUILDING UNIT:	WASTE DISPOSAL / INCINERATOR BUILDING - N	1			08 - ELECTRICAL LAYOUT	
				2			SCALE :	1:20

NOTE: ALL DESIGNS ABOVE ARE PROTECTED BY COPYRIGHT. NO PART SHOULD BE REPRODUCED (PHOTOCOPIED OR ANY OTHER MEANS) WITHOUT PERMISSION .