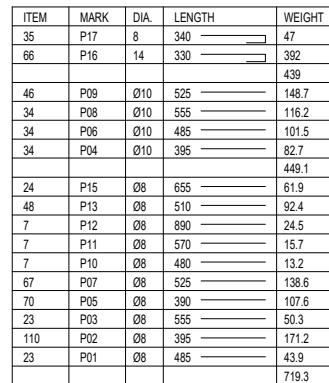
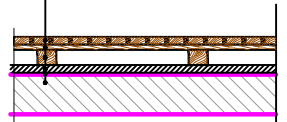


SLAB COVERING  
S. 1:20

H/IZOLATING WOODEN PANEL	2 cm
WOODEN PANEL	1.5 cm
WOODEN PURLING	5x4 cm
LEVELING CONCRETE LAYER	2 cm
H/IZOLATING HDPE LAYER	1 cm
SLAB CONCRETE C25/30	10 cm



FORMWORK (m2)	: 250.15
CONCRETE(m3)	: 27.54
Ø 6-12 (kg)	: 1607.4

	485	P108
	395	P208
	555	P308
	390	P508
	525	P708
	480	P1008
	570	P1108
	890	P1208
	510	P1308
	655	P1508

---



	395	P4010
	485	P6010
	555	P8010
	525	P9010


---

	510	P14012
--	-----	--------

Structural elements are calculated and designed with following characteristics:

- Foundation:** Foundations are designed with plinths:
  - Concrete **C-25/30** ( $f_{ck}=25000\text{kN/m}^2$ ) with safety factor  $\gamma_c=1.5$
  - Reinforcement **FeB 42k** ( $f_{ys}=420\text{N/mm}^2$ ) with safety factor  $\gamma_s=1.15$
- Concrete Walls & Columns:** All walls & columns are designed with:
  - Concrete **C-25/30** ( $f_{ck}=25000\text{kN/m}^2$ ) with safety factor  $\gamma_c=1.5$
  - Reinforcement **FeB 42k** ( $f_{ys}=420\text{N/mm}^2$ ) with safety factor  $\gamma_s=1.15$
- Concrete Beams:** Beams for all stories are designed with:
  - Concrete **C-25/30** ( $f_{ck}=25000\text{kN/m}^2$ ) with safety factor  $\gamma_c=1.5$
  - Reinforcement **FeB 42k** ( $f_{ys}=420\text{N/mm}^2$ ) with safety factor  $\gamma_s=1.15$
- Concrete Slab:** Slabs for all stories are designed with:
  - Concrete **C-25/30** ( $f_{ck}=25000\text{kN/m}^2$ ) with safety factor  $\gamma_c=1.5$
  - Reinforcement **FeB 42k** ( $f_{ys}=420\text{N/mm}^2$ ) with safety factor  $\gamma_s=1.15$

	<b>Water Solutions Pvt Ltd</b> 1st Floor, Ma.Fas eri, Ameenee Magu, Male' 20205, Republic of Maldives Tel: +960 334 1643 / +960 330 1643 Fax: +960 333 1643 Email: <a href="mailto:info@water-solutions.biz">info@water-solutions.biz</a>		<b>Kocks Consult GmbH</b> Stegemannstr. 32 - 38 D-56068 Koblenz Tel: +49 261 1302-0 Fax: +49 261 1302-400 Email: <a href="mailto:info@kocks-ing.de">info@kocks-ing.de</a>
	Name		
Designed	Qinami	April 2018	
Drafted	Qinami	April 2018	
Checked		April 2018	
Project No.	213 - 68524		

Client		<b>Ministry of Environment and Energy</b> 	
Project Title	Consultancy Services for Feasibility Study for an Integrated Solid Waste Management System for Zone III (including Greater Malé) and Preparation of Engineering Design of the Regional Waste Management Facility at Thilafushi		
Design phase	Detailed Design Harbour Rehabilitation		
Contents	Administration Building - Roof Plan		
Scale	1 : 10; 1 : 2		
Drawing No.	3.2.5	Paper	A3