

BUILDING SERVICES DRAWINGS OF

PROPOSED 02 STOREY BUILDING AT

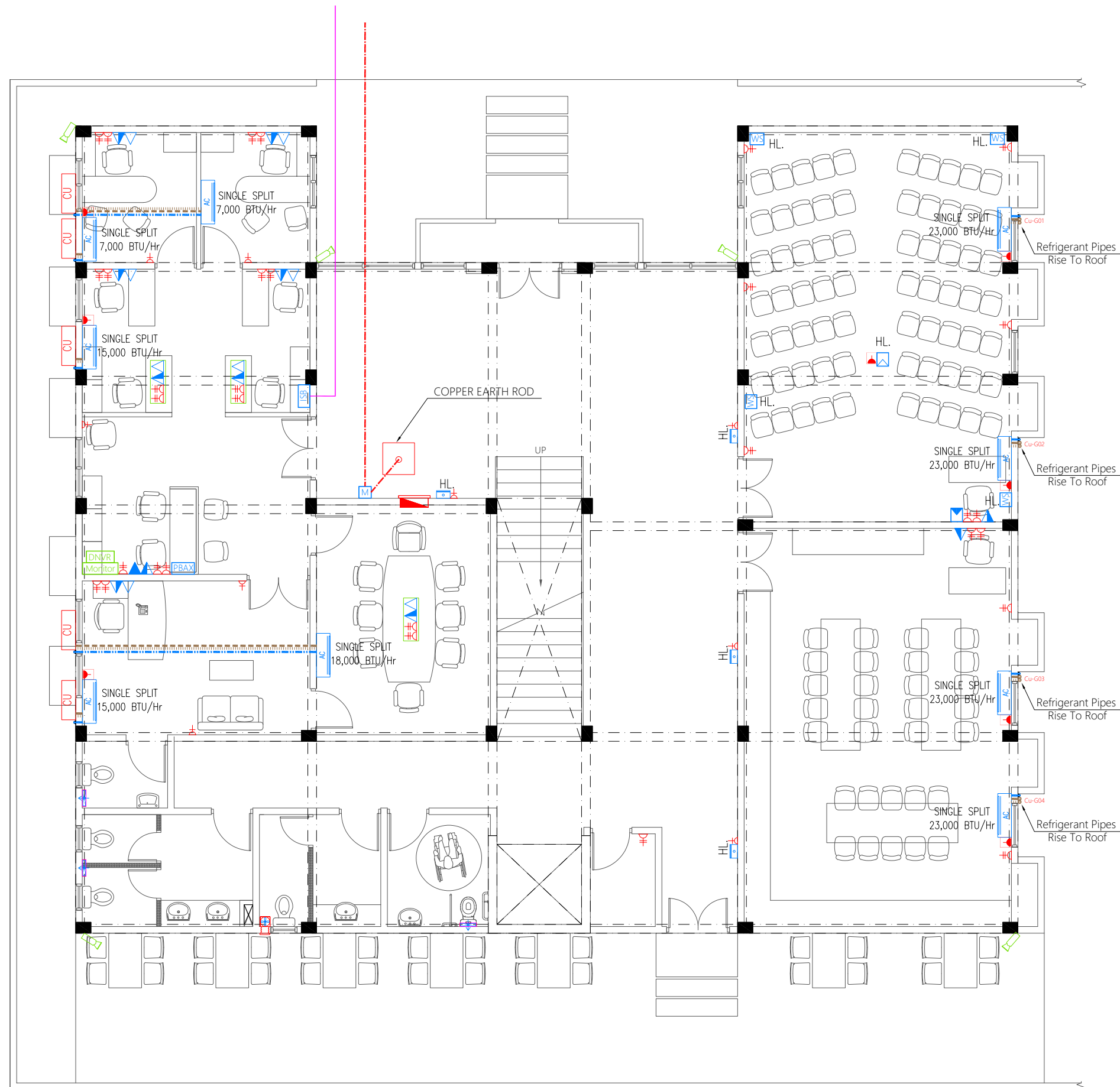
FUVAHMULAH CENTER FOR HOLY QUR'AN

For Ministry Of Islamic Affairs

By Epoch Associates Pvt. Ltd



T: +960 333 3528 E: info@epoch.associates W: www.epoch.associates
A: 4A, 4th Floor, M. Ahigasdoshuge, Fareedhee Magu Male' Republic of Maldives



Legend

- Refrigerant Pipes
- 25Ø Condensate Drain Pipe
- 40Ø Condensate Drain Riser Pipe
- AC
- Wall Mount Air Conditioner
- CU
- Outdoor Condensing Unit

Legend

- 13A Twin Socket
- 13A Twin Socket With USB Ports
- 13A Power Socket
- 15A Switched Socket @ H.L.
- 15A Socket In Polycarbonate Box
- Distribution Board
- High Level
- Angular Camera
- Security Monitor
- Digital/network Video Recorder
- Telephone Outlet
- Telephone Extension
- Computer Network Outlet
- Emergency Light
- Wall Mounted Speaker
- VGA Inlet Socket for Ceiling Mounted Projector
- VGA Outlet Socket for Ceiling Mounted Projector
- Electricity Meter
- Internet Switchboard
- Private Automatic Branch Exchange (PABX)
- PVC Duct For Tel./Internet Cable Lead In Below Ground Slab
- Main Incoming Cable For Power PVC Duct Below Ground

GROUND FLOOR POWER AND ACV LAYOUT

1:100

PROPOSED 02 STOREY BUILDING AT FUVAHMULAH CENTER FOR HOLY QUR'AN

Client:
Ministry Of Islamic Affairs

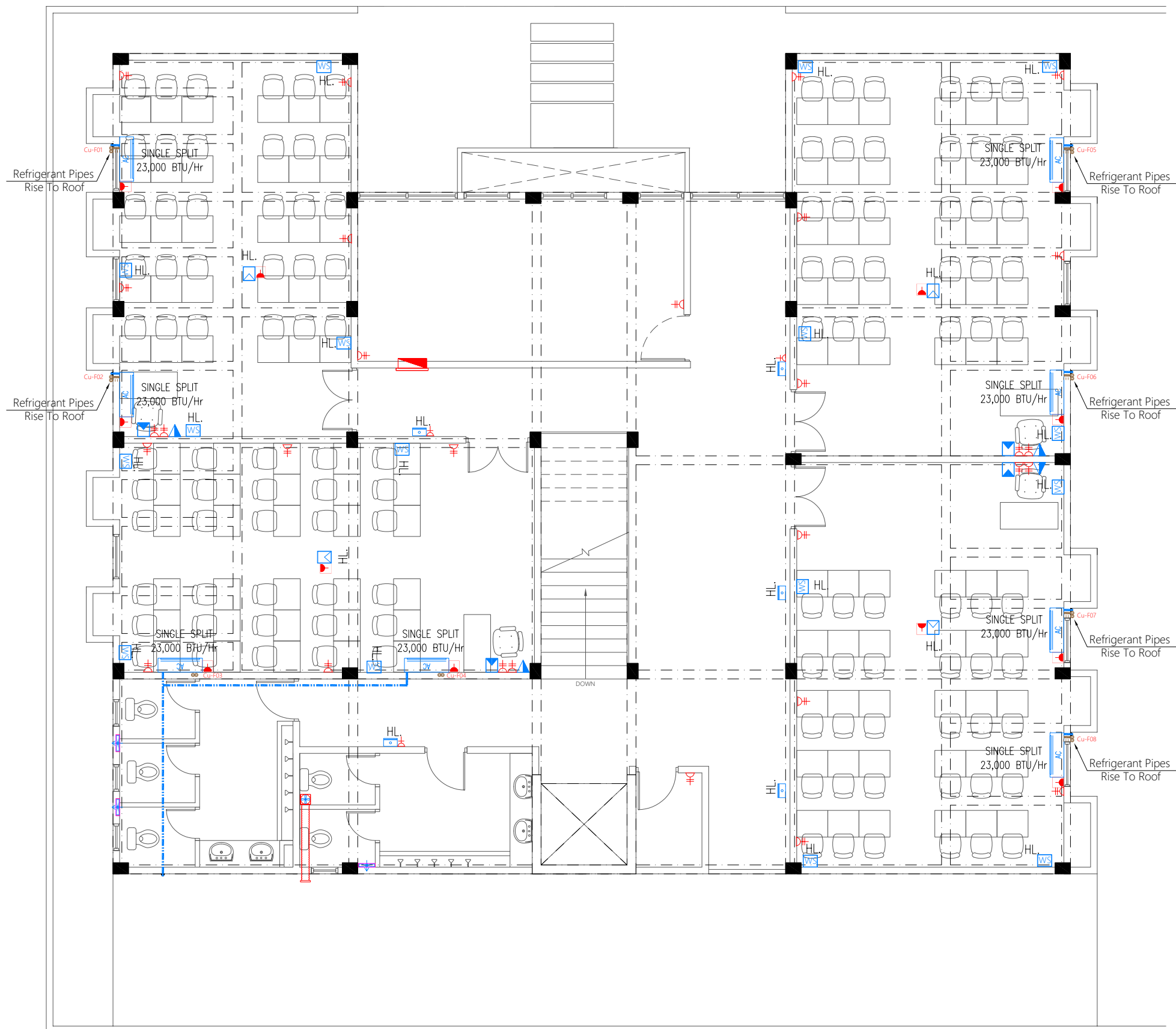
October 2019

Services By: Mohamed Rassam
Checked By:
Drawn By: Hussain Rasheed



T: +960 333 3528 E: info@epochassociates
W: www.epochassociates A: M. Ahgashhoshuge,
Faradhee Magu Male' Republic of Maldives

Rev: _____ Page: _____
PAC-01



- Legend**
- Refrigerant Pipes
 - 25Ø Condensate Drain Pipe
 - 40Ø Condensate Drain Riser Pipe
 - AC
 - Wall Mount Air Conditioner
 - CU
 - Outdoor Condensing Unit
-
- Legend**
- 13A Twin Socket
 - 13A Twin Socket With USB Ports
 - 13A Power Socket
 - 15A Switched Socket @ H.L.
 - 15A Socket In Polycarbonate Box
 - Distribution Board
 - HL.
 - High Level
 - Angular Camera
 - Security Monitor
 - Digital/network Video Recorder
 - Telephone Outlet
 - Telephone Extension
 - Computer Network Outlet
 - Emergency Light
 - Wall Mounted Speaker
 - VGA Inlet Socket for Ceiling Mounted Projector
 - VGA Outlet Socket for Ceiling Mounted Projector
 - Electricity Meter
 - Internet Switchboard
 - Private Automatic Branch Exchange (PABX)
 - PVC Duct For Tel./Internet Cable Lead In Below Ground Slab
 - Main Incoming Cable For Power PVC Duct Below Ground

FIRST FLOOR POWER AND ACV LAYOUT

PROPOSED 02 STOREY BUILDING AT
**FUVAHMULAH
 CENTER FOR HOLY
 QUR'AN**

Client:
Ministry Of Islamic Affairs

October 2019

Services By: Mohamed Rassam
 Checked By:
 Drawn By: Hussain Rasheed



T: +960 333 3528 E: info@epochassociates
 W: www.epochassociates A: M. Ahgashhothuge,
 Fareedhee Magu Male' Republic of Maldives

Rev: _____ Page: **PAC-02**

- Legend

Refrigerant Pipes

25Ø Condensate Drain Pipe

40Ø Condensate Drain Riser Pipe

AC

Wall Mount Air Conditioner

CU

Outdoor Condensing Unit
- Legend

13A Twin Socket

13A Twin Socket With USB Ports

13A Power Socket

15A Switched Socket @ H.L.

15A Socket In Polycarbonate Box

Distribution Board

HL.

High Level

Angular Camera

Monitor

Security Monitor

DNVR

Digital/network Video Recorder

Telephone Outlet

Telephone Extension

Computer Network Outlet

Emergency Light

WS

Wall Mounted Speaker

VGA Inlet Socket for Ceiling Mounted Projector

VGA Outlet Socket for Ceiling Mounted Projector

M

Electricity Meter

ISB

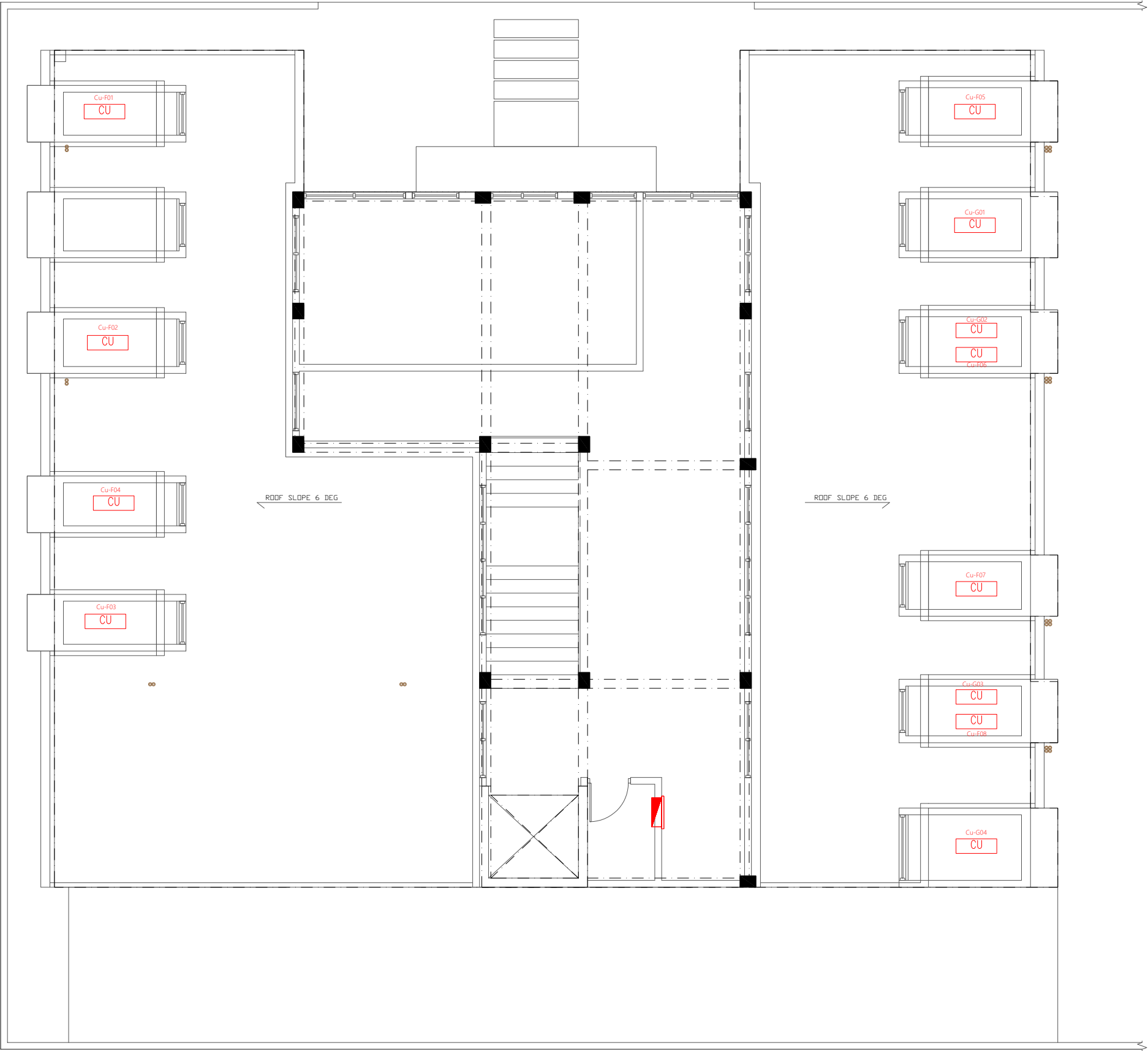
Internet Switchboard

PBAX

Private Automatic Branch Exchange (PABX)

PVC Duct For Tel./Internet Cable Lead In Below Ground Slab

Main Incoming Cable For Power PVC Duct Below Ground



ROOF 1 POWER AND ACV LAYOUT

1:100

PROPOSED 02 STOREY BUILDING AT

FUVAHMULAH

CENTER FOR HOLY

QUR'AN

Client:

Ministry Of Islamic Affairs

October 2019

Services By: Mohamed Rassam

Checked By:

Drawn By: Hussain Rasheed

EPOCH

ASSOCIATES

T

+960 333 3528

E

info@epochassociates

W

www.epochassociates

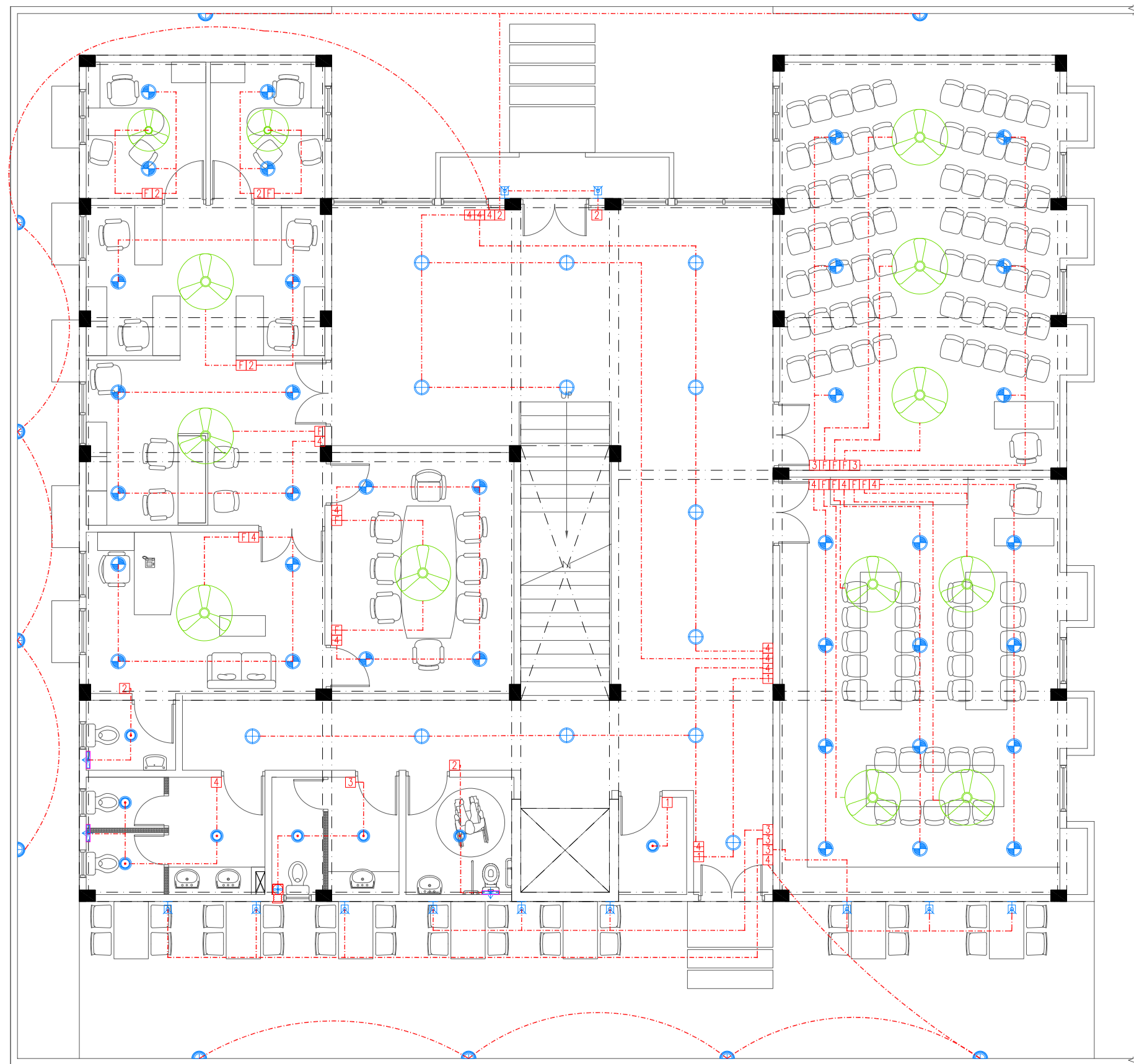
A

M. Ahgashhoshuge, Faradhee Magu Male' Republic of Maldives

Rev:

Page:

PAC-03



- Legend**
- Ceiling Light (18W)
 - Ceiling Light (12W)
 - Recessed Ceiling Light (12W)
 - Wall Light - Weather Proof Ip55 (low Level 8W)
 - Weather Proof Wall Light IP55 (12W)
 - 3 Ft Led Tube Light
 - Light Switch (1 Gang - 4 Gang)
 - Two Way Light Switches (1 Gang - 4 Gang)
 - Master Switch
 - Ceiling Fan Switch With Controller
 - False Ceiling
 - 29" To 36" Ceiling Fan
 - 42" To 48" Ceiling Fan
 - Ceiling Mounted Exhaust Fan 90m3/hr
 - Wall Mounted Exhaust Fan

GROUND FLOOR LIGHTING LAYOUT

PROPOSED 02 STOREY BUILDING AT
**FUVAHMULAH
 CENTER FOR HOLY
 QUR'AN**

Client:
 Ministry Of Islamic Affairs

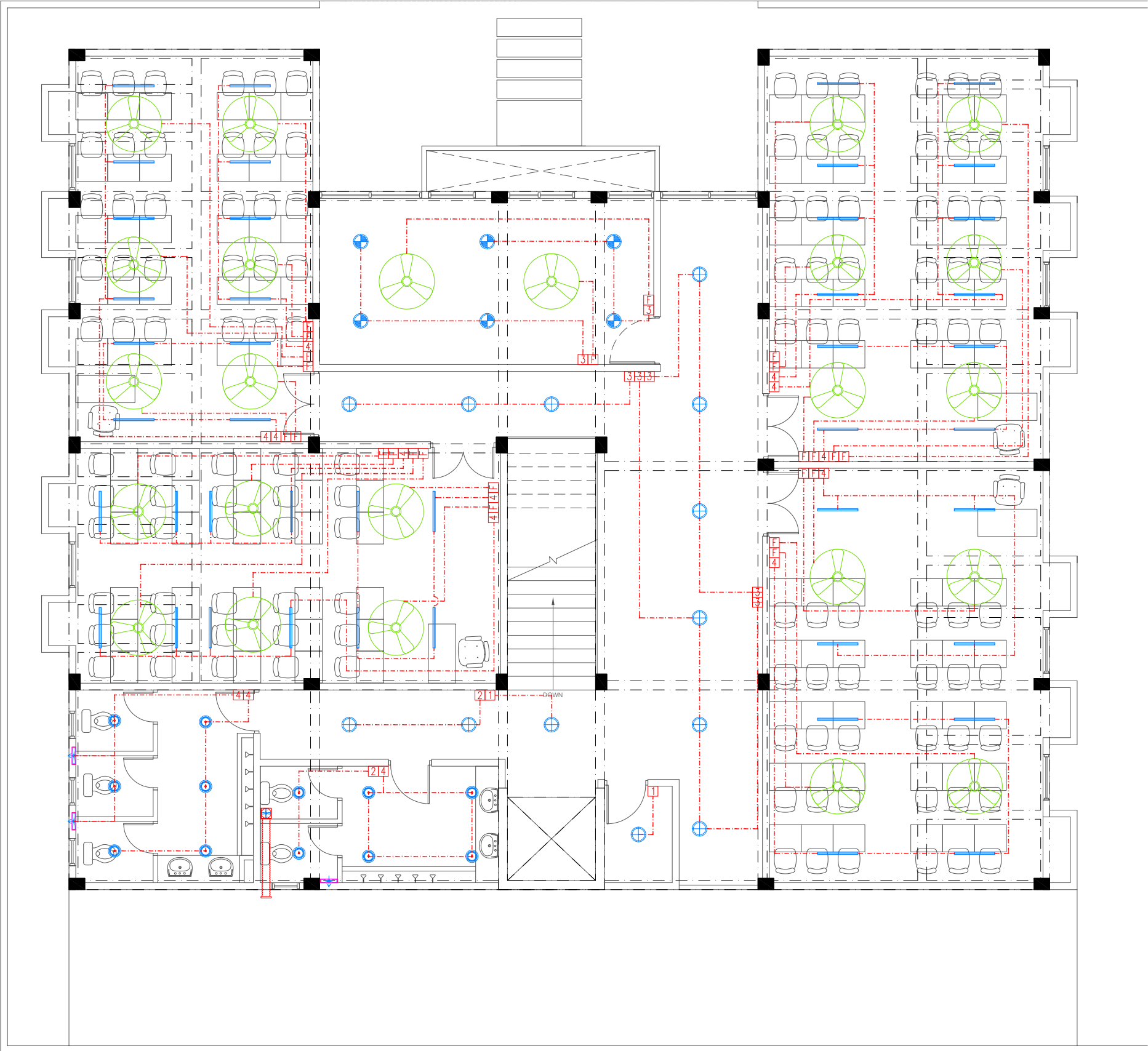
October 2019

Services By: Mohamed Rassam
 Checked By:
 Drawn By: Hussain Rasheed



T: +960 333 3528 E: info@epochassociates
 W: www.epochassociates A: M. Ahgashhughe,
 Fareedhee Magu Male' Republic of Maldives

Rev: _____ Page: _____
 EL-01



- Legend**
- Ceiling Light (18W)
 - Ceiling Light (12W)
 - Recessed Ceiling Light (12W)
 - Wall Light - Weather Proof Ip55 (low Level 8W)
 - Weather Proof Wall Light IP55 (12W)
 - 3 Ft Led Tube Light
 - Light Switch (1 Gang - 4 Gang)
 - Two Way Light Switches (1 Gang - 4 Gang)
 - Master Switch
 - Ceiling Fan Switch With Controller
 - False Ceiling
 - 29" To 36" Ceiling Fan
 - 42" To 48" Ceiling Fan
 - Ceiling Mounted Exhaust Fan 90m3/hr
 - Wall Mounted Exhaust Fan

PROPOSED 02 STOREY BUILDING AT
**FUVAHMULAH
CENTER FOR HOLY
QUR'AN**

Client:
Ministry Of Islamic Affairs

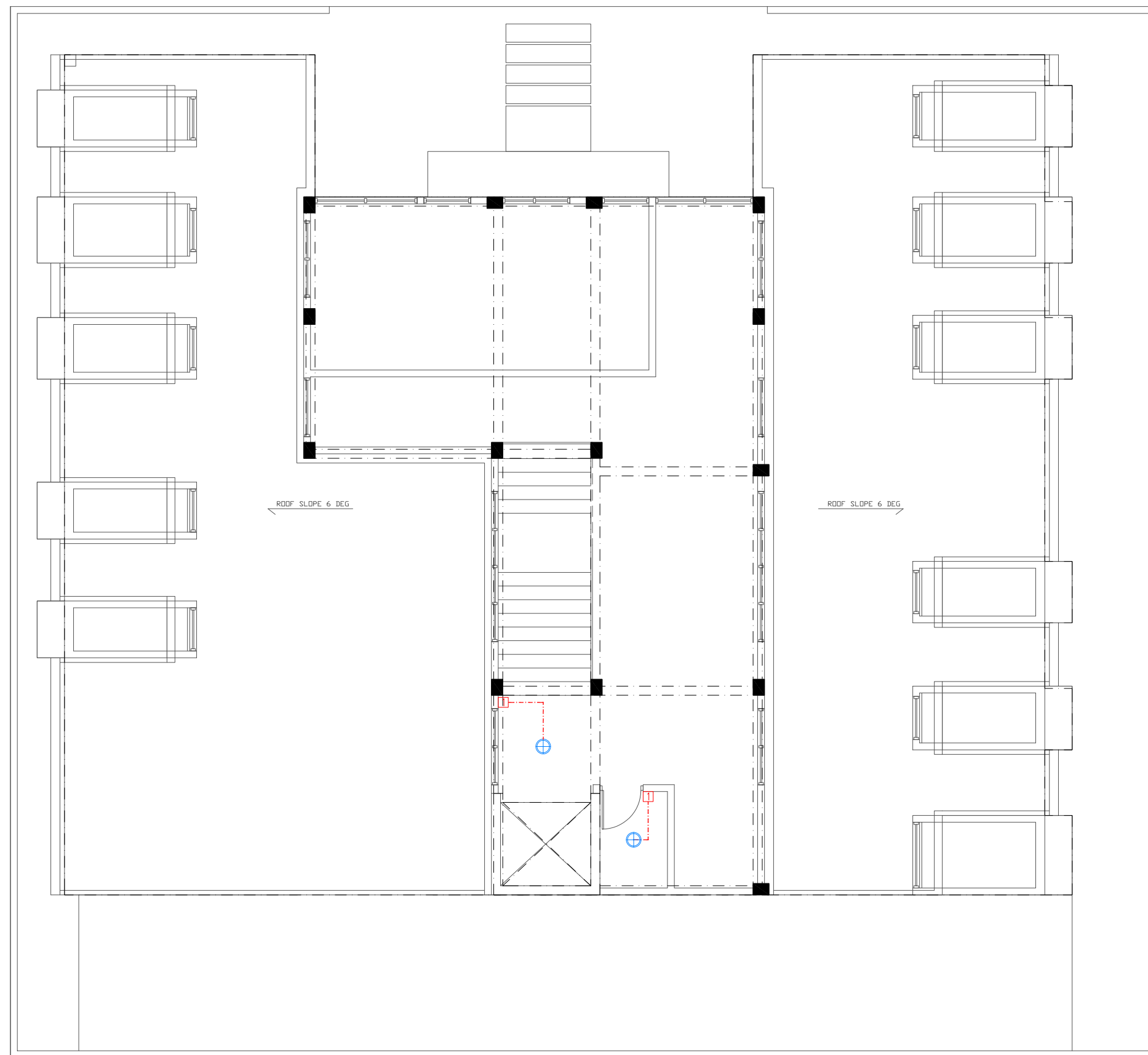
October 2019
Services By: Mohamed Rassam
Checked By:
Drawn By: Hussain Rasheed



T: +960 333 3528 E: info@epochassociates
W: www.epochassociates A: M. Ahgashhoshuge,
Fareedhee Magu Male' Republic of Maldives

Rev: Page:
EL-02

FIRST FLOOR LIGHTING LAYOUT



ROOF 1 FLOOR LIGHTING LAYOUT

1:100

PROPOSED 02 STOREY BUILDING AT
**FUVAHMULAH
 CENTER FOR HOLY
 QUR'AN**

Client:
 Ministry Of Islamic Affairs

October 2019

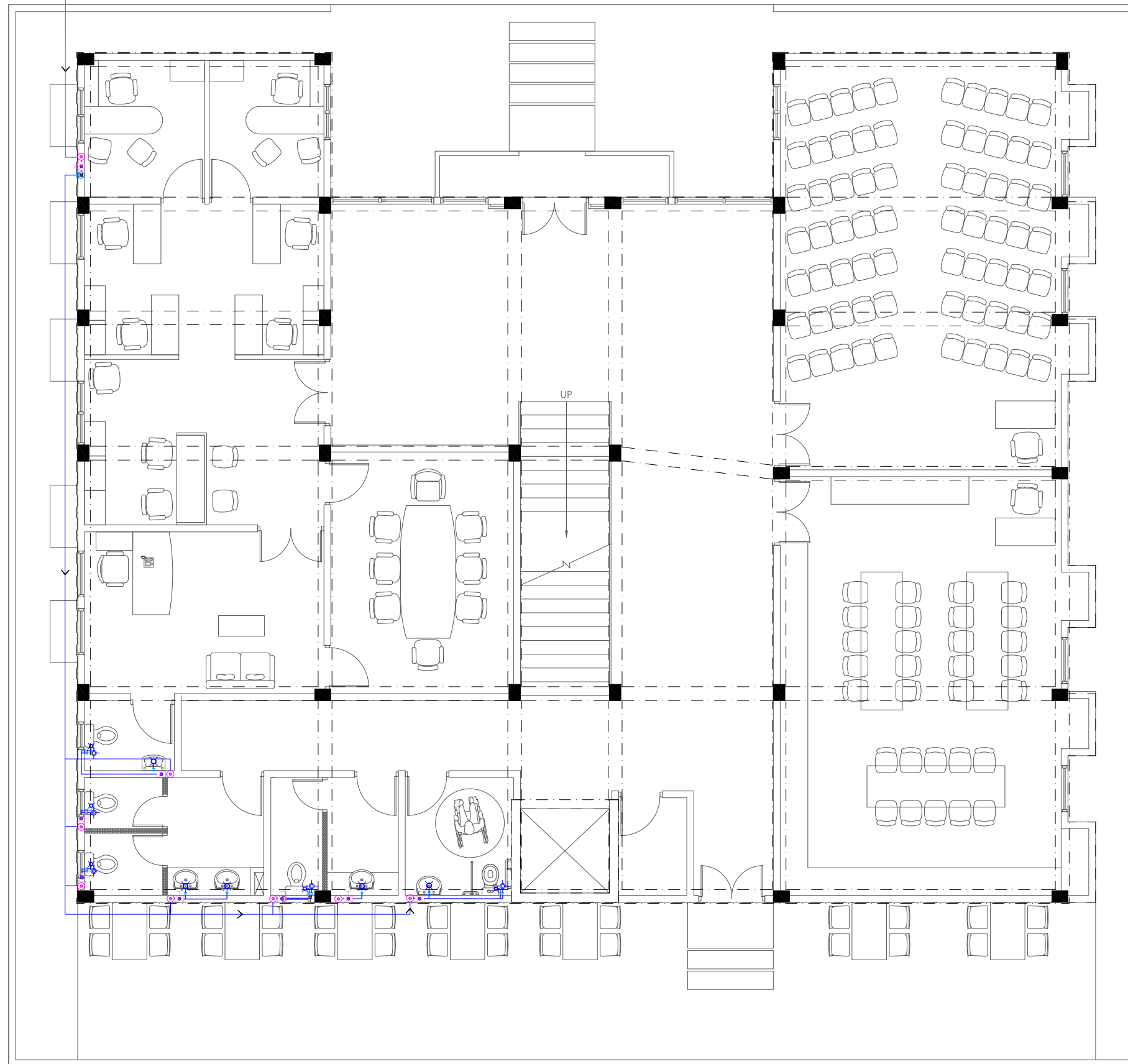
Services By: Mohamed Rassam
 Checked By:
 Drawn By: Hussain Rasheed



T: +960 333 3528 E: info@epochassociates
 W: www.epochassociates A: M. Ahgashhoshuge,
 Farreedhee Magu Male' Republic of Maldives

Rev:	Page:
---	EL-03

PIPE FROM MAINS SUPPLY



Legend

- 16Ø Cold Water Supply To Basin Faucet
- 16Ø Cold Water Supply To Bidet Shower
- 16Ø Cold Water Supply To Wall Tap
- 16Ø Cold Water Supply To Cistern
- Gate Valve
- Rise In Wall
- Drop In Wall
- MWSC Meter
- 25Ø Cold Water Supply Pipes Running Underground
- 20Ø Cold Water Supply Pipes Running In Wall
- 20Ø Cold Water Supply Pipes In Wall

PROPOSED 02 STOREY BUILDING AT
**FUVAHMULAH
CENTER FOR HOLY
QUR'AN**

Client:
Ministry Of Islamic Affairs

October 2019

Services By: Mohamed Rassam
Checked By:
Drawn By: Hussain Rasheed

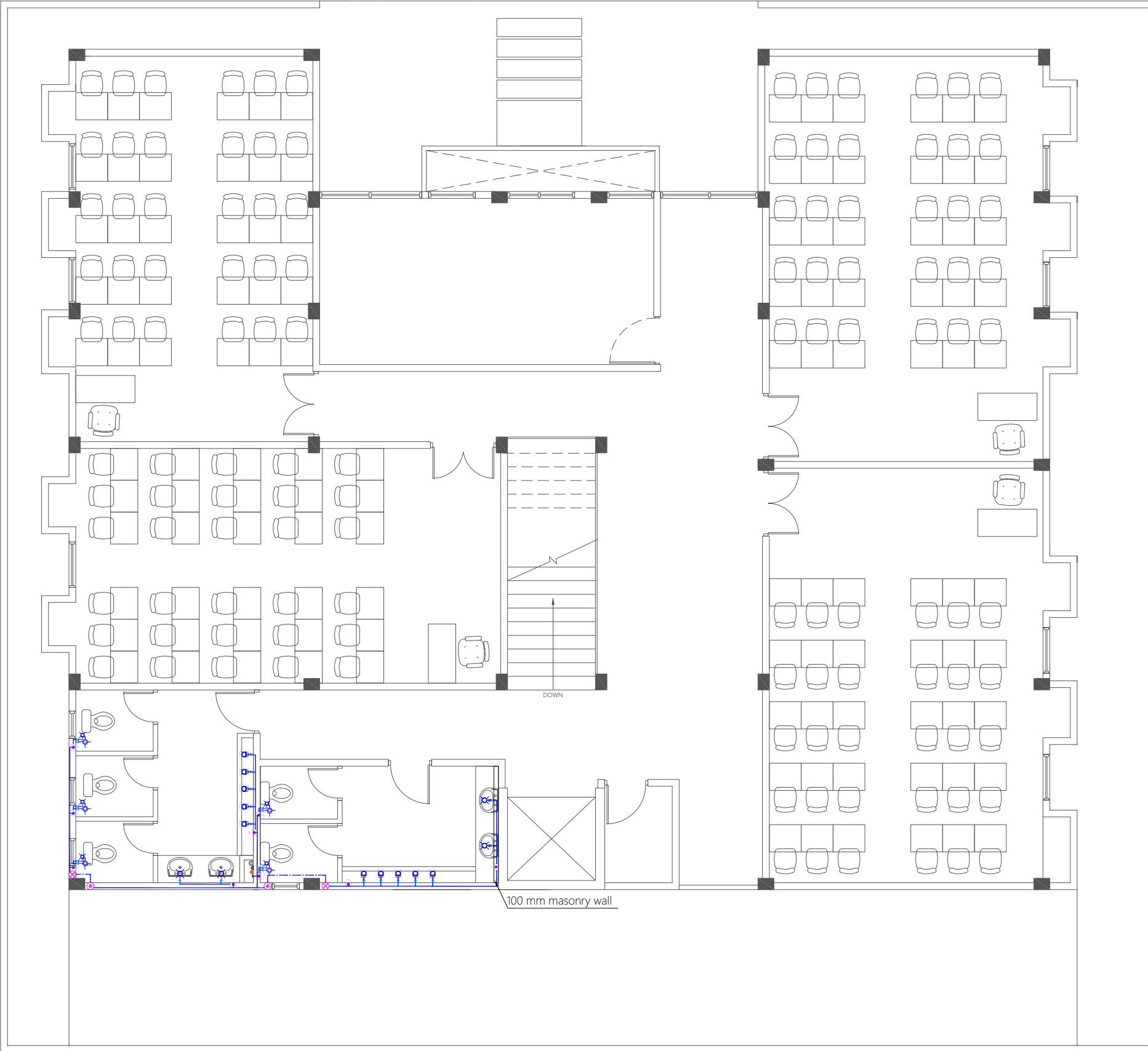


T: +960 333 3528 E: info@epochassociates
W: www.epochassociates A: M. Ahgashhoshuge,
Farreedhee Magu Male' Republic of Maldives

Rev: _____ Page: **PL-01**

GROUND FLOOR PLUMBING LAYOUT

1:100



- Legend
- 16Ø Cold Water Supply To Basin Faucet
 - 16Ø Cold Water Supply To Bidet Shower
 - 16Ø Cold Water Supply To Wall Tap
 - 16Ø Cold Water Supply To Cistern
 - Gate Valve
 - Rise In Wall
 - Drop In Wall
 - MWSC Meter
 - 25Ø Cold Water Supply Pipes Running Underground
 - 20Ø Cold Water Supply Pipes Running In Wall
 - 20Ø Cold Water Supply Pipes In Wall

PROPOSED 02 STOREY BUILDING AT
**FUVAHMULAH
CENTER FOR HOLY
QUR'AN**

Client:
Ministry Of Islamic Affairs

October 2019

Services By: Mohamed Rassam
Checked By:
Drawn By: Hussain Rasheed

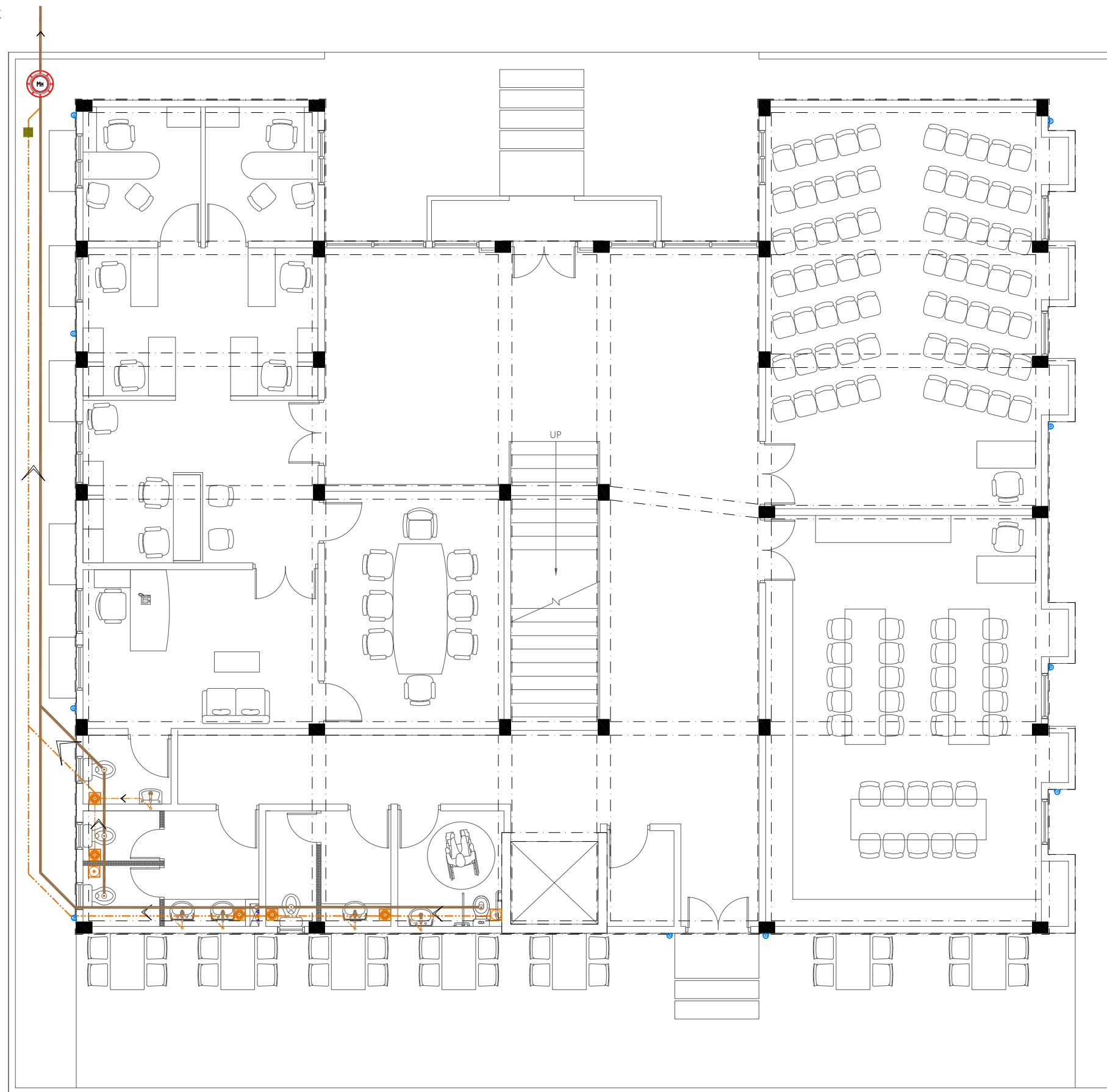
**EPOCH**
ASSOCIATES

T: +960 333 3528 E: info@epochassociates
W: www.epochassociates A: M. Ahgashhothuge,
Faridheer Magu Male' Republic of Maldives

Rev:	Page:
---	PL-02

FIRST FLOOR PLUMBING LAYOUT

CONNECTED TO MAIN NETWORK



Legend

- Floor Drain
- Floor Gully
- 82Ø Soil Pipe (uPVC Pipe)
- 82Ø Soil Vent Pipe (uPVC Pipe)
- 63Ø Waste Pipe (uPVC Pipe)
- 63Ø Waste Vent Pipe (uPVC Pipe)
- 40Ø Waste Pipe (uPVC Pipe)
- 50Ø Manhole Vent Pipe (uPVC Pipe)
- 110Ø Rain Water Pipes (uPVC Pipe)
- Gully Trap
- 110Ø Rainwater Outlet
- 110Ø Rainwater Outlet Perforated Cowl
- Clean Out Point
- Bottle Trap

Notes: -

- All Drainage Pipes Should Have At A Slope Of 1/150
- All Floor Drains Should Have 'P' Traps

PROPOSED 02 STOREY BUILDING AT FUVAHMULAH CENTER FOR HOLY QUR'AN

Client:
Ministry Of Islamic Affairs

October 2019

Services By: Mohamed Rassam
Checked By:
Drawn By: Hussain Rasheed

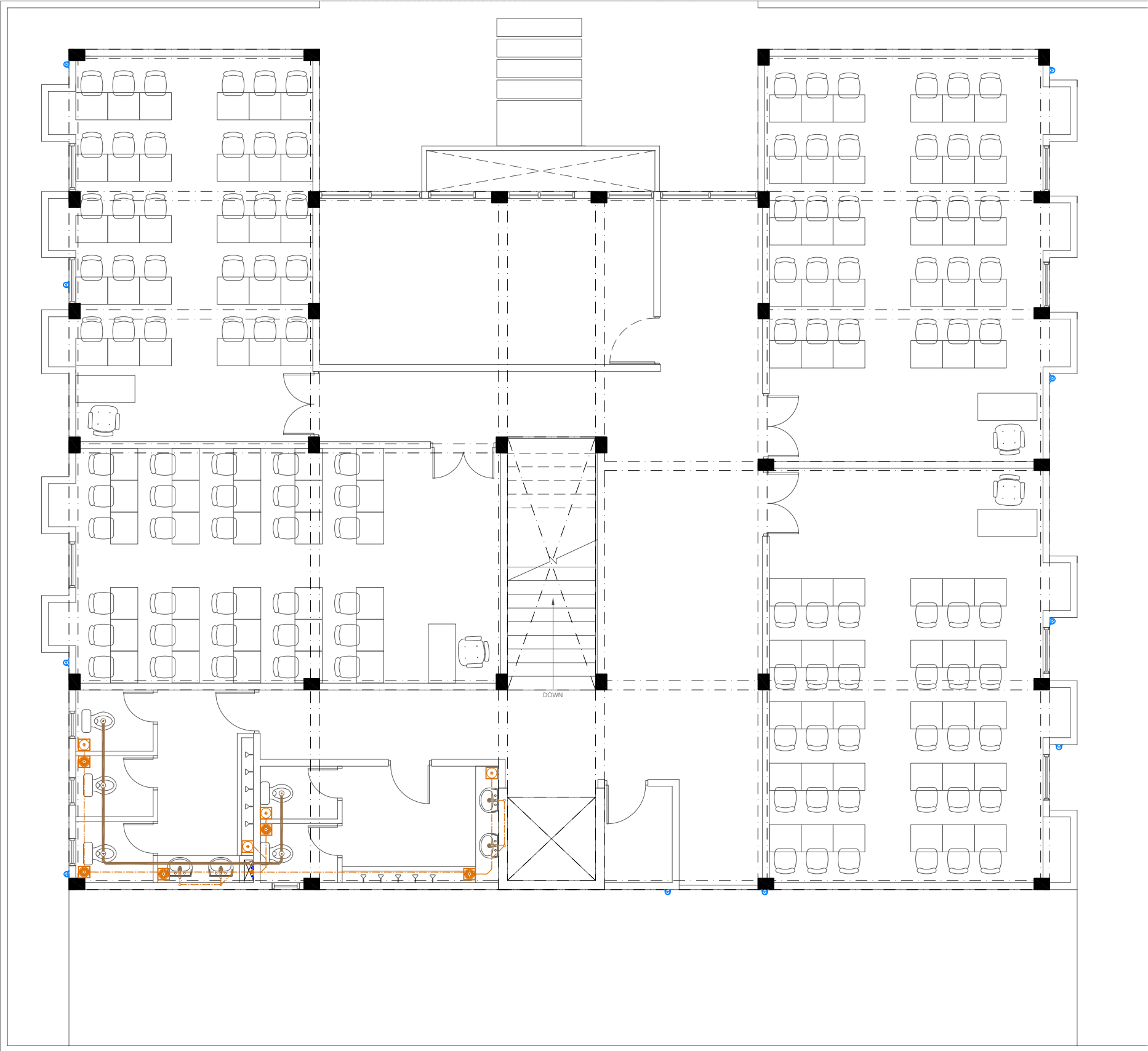


T: +960 333 3528 E: info@epochassociates
W: www.epochassociates A: M. Ahgashhohuge,
Farreehee Magu Male' Republic of Maldives

Rev: _____ Page: **DR-01**

GROUND FLOOR DRAINAGE LAYOUT

1:100



Legend

- Floor Drain
- Floor Gully
- 820 Soil Pipe (uPVC Pipe)
- 820 Soil Vent Pipe (uPVC Pipe)
- 630 Waste Pipe (uPVC Pipe)
- 630 Waste Vent Pipe (uPVC Pipe)
- 400 Waste Pipe (uPVC Pipe)
- 500 Manhole Vent Pipe (uPVC Pipe)
- 1100 Rain Water Pipes (uPVC Pipe)
- Gully Trap
- 1100 Rainwater Outlet
- Clean Out Point
- Bottle Trap

Notes: -

- All Drainage Pipes Should Have A Slope Of 1/150
- All Floor Drains Should Have 'P' Traps

PROPOSED 02 STOREY BUILDING AT
**FUVAHMULAH
CENTER FOR HOLY
QUR'AN**

Client:
Ministry Of Islamic Affairs

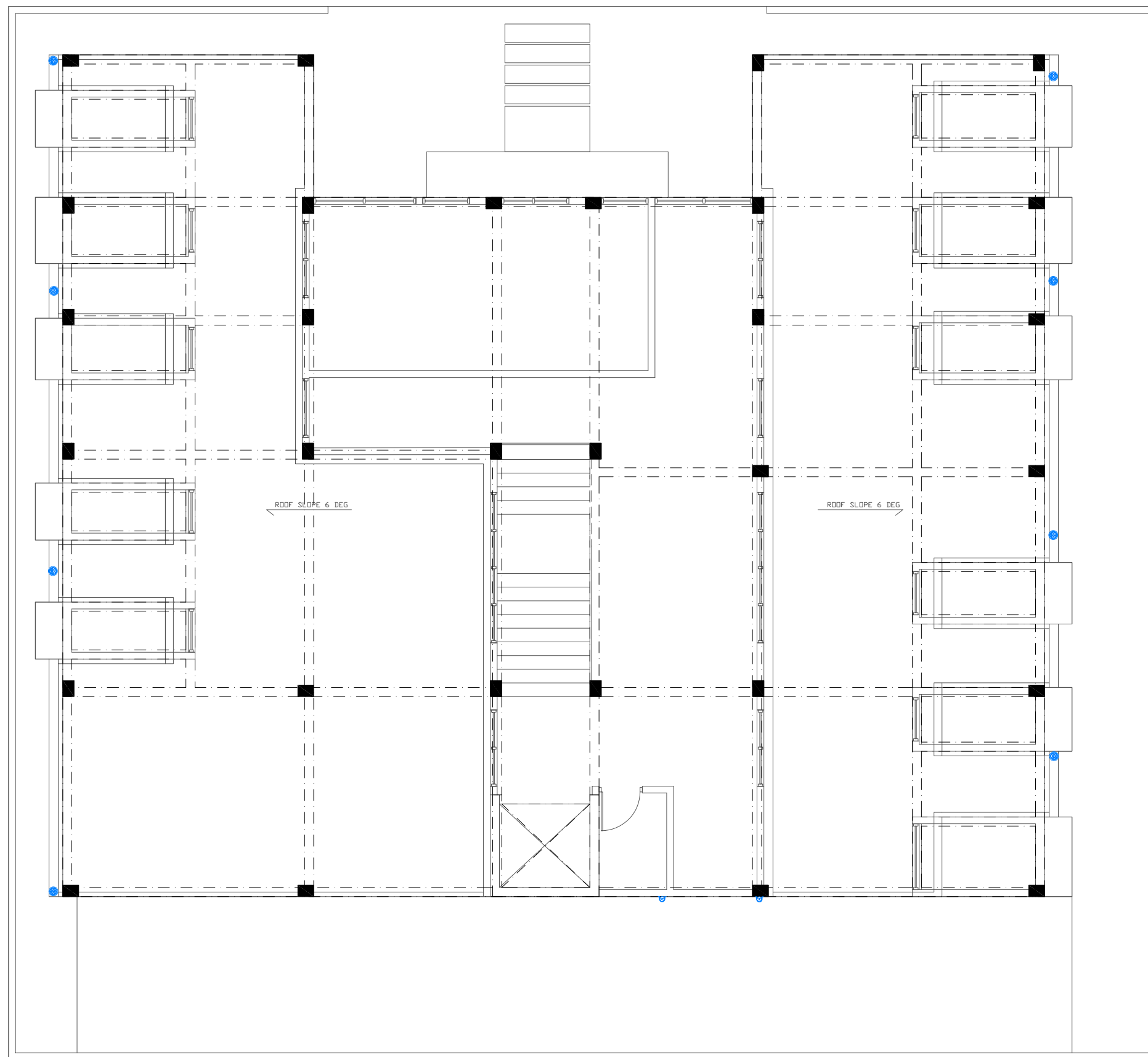
October 2019
Services By: Mohamed Rassam
Checked By:
Drawn By: Hussain Rasheed



T: +960 333 3528 E: info@epochassociates
W: www.epochassociates A: M. Ahgashhoshuge,
Fareedhee Magu Male Republic of Maldives

Rev:	Page:
---	DR-02

FIRST FLOOR DRAINAGE LAYOUT



ROOF 1 FLOOR DRAINAGE LAYOUT

1:100

PROPOSED 02 STOREY BUILDING AT
**FUVAHMULAH
 CENTER FOR HOLY
 QUR'AN**

Client:
 Ministry Of Islamic Affairs

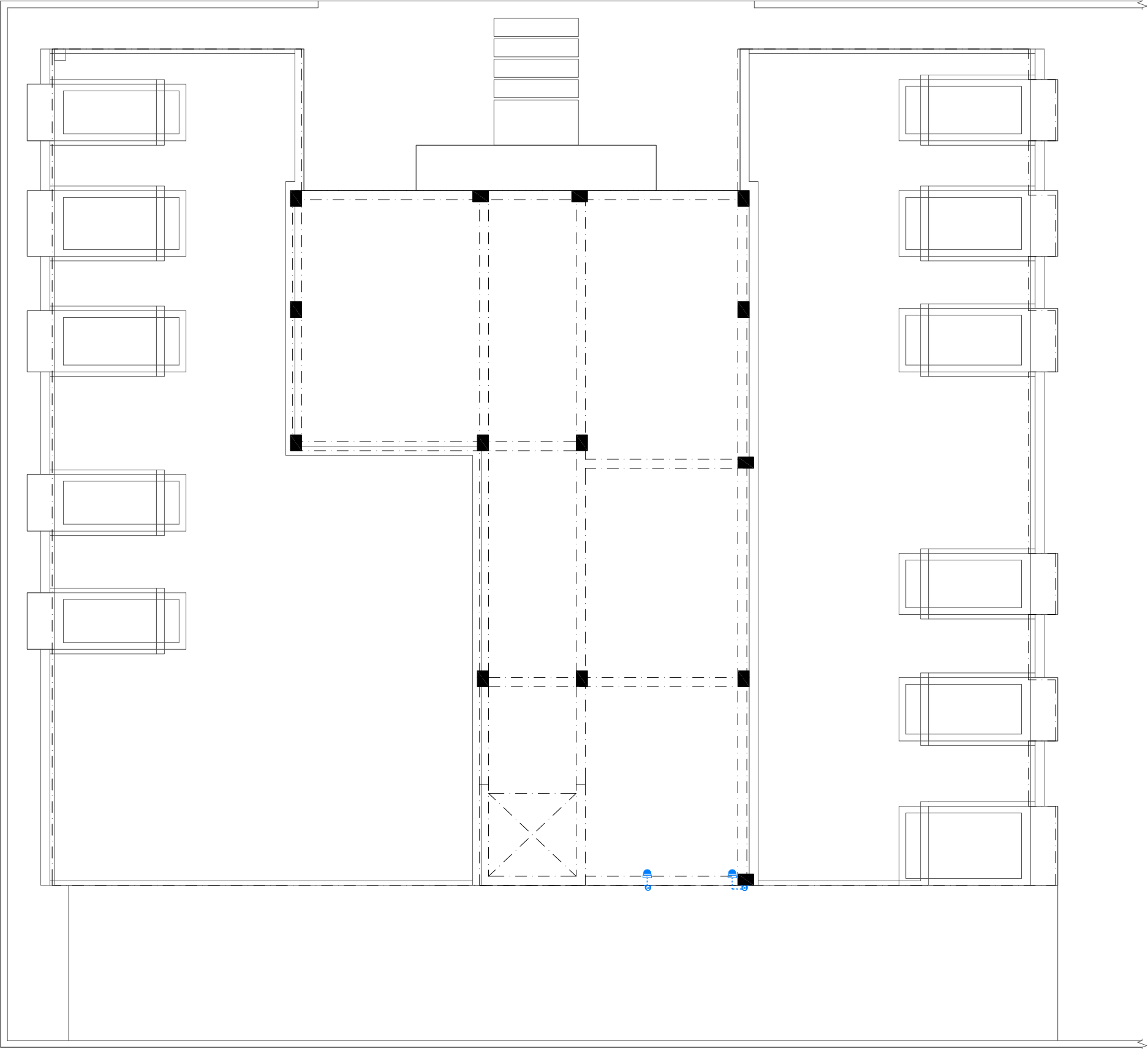
October 2019

Services By: Mohamed Rassam
 Checked By:
 Drawn By: Hussain Rasheed



T: +960 333 3528 E: info@epochassociates
 W: www.epochassociates A: M. Ahgashhoshuge,
 Farreedhee Magu Male' Republic of Maldives

Rev:	Page:
---	---
---	DR-03
---	---



ROOF 2 FLOOR DRAINAGE LAYOUT


1:100

PROPOSED 02 STOREY BUILDING AT
**FUVAHMULAH
CENTER FOR HOLY
QUR'AN**

Client:
Ministry Of Islamic Affairs

October 2019

Services By: Mohamed Rassam
Checked By:
Drawn By: Hussain Rasheed



EPOCH
ASSOCIATES

T: +960 333 3528 | E: info@epochassociates
W: www.epochassociates | A: M. Ahgashhothuge,
Farredhee Magu Male' Republic of Maldives

Rev:	Page:
---	---
---	---
---	---

DR-04